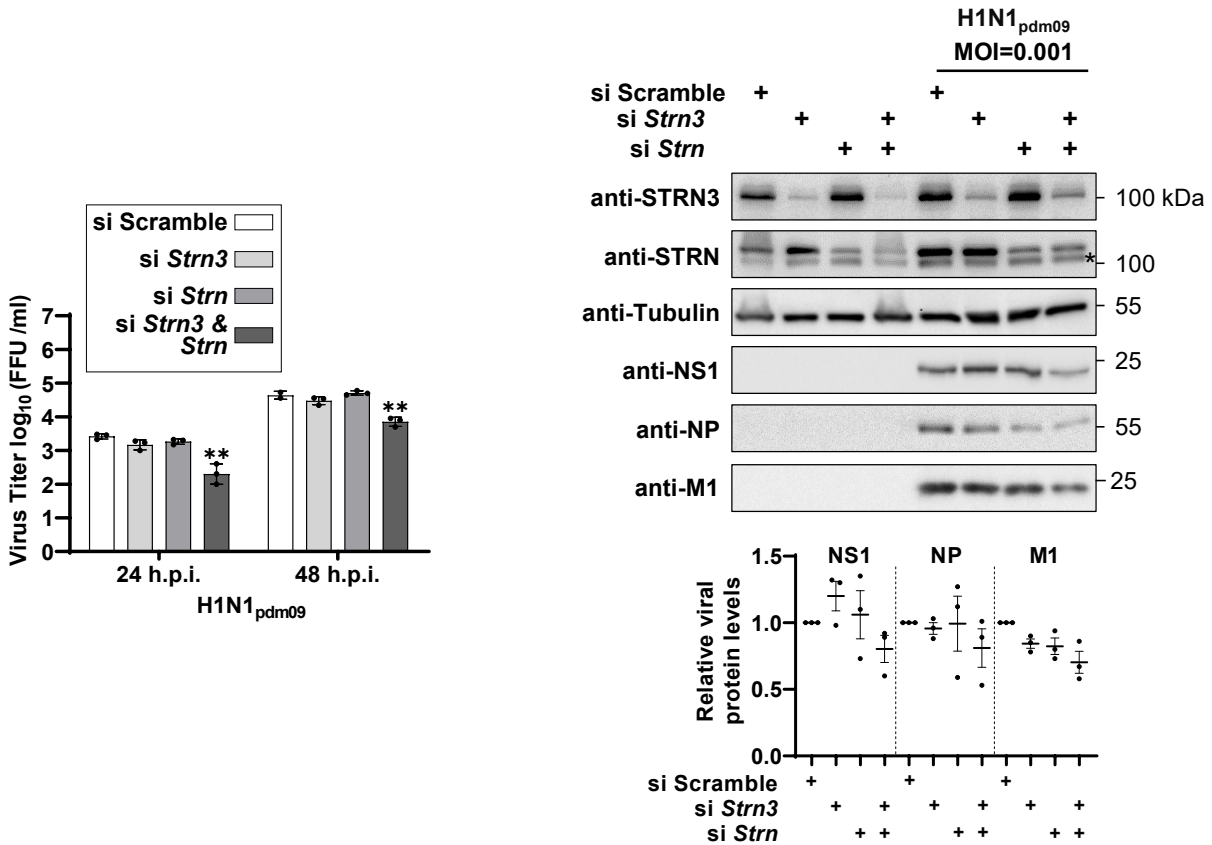


## Supplementary Figures



**Suppl. Fig. S5. Effect of the Striatin complex on replication of H1N1<sub>pdm09</sub>.** MLE-15 cells were seeded and transfected one and three days later with siRNAs targeting mRNAs encoding *Strn/Strn3* or an adequate scrambled control as shown. Left: One fraction of the cells was infected with SC35M (MOI = 0.001) and viral titers of cell culture supernatants were determined at the indicated time points. Bars indicate means  $\pm$  s.d. obtained from three independent experiments performed in triplicates by unpaired t-tests, asterisks indicate *P* values (\**P*  $\leq$  0.05, \*\**P*  $\leq$  0.01). Right: The remaining fraction of the cells was lysed and tested by Western blotting for adequate knockdown and expression of viral proteins as shown, the position of a non-specific band is highlighted by an asterisk. The lower part shows a quantification of protein expression from three independent experiments, expression in the controls was set to 1, the means  $\pm$  SEM are indicated.