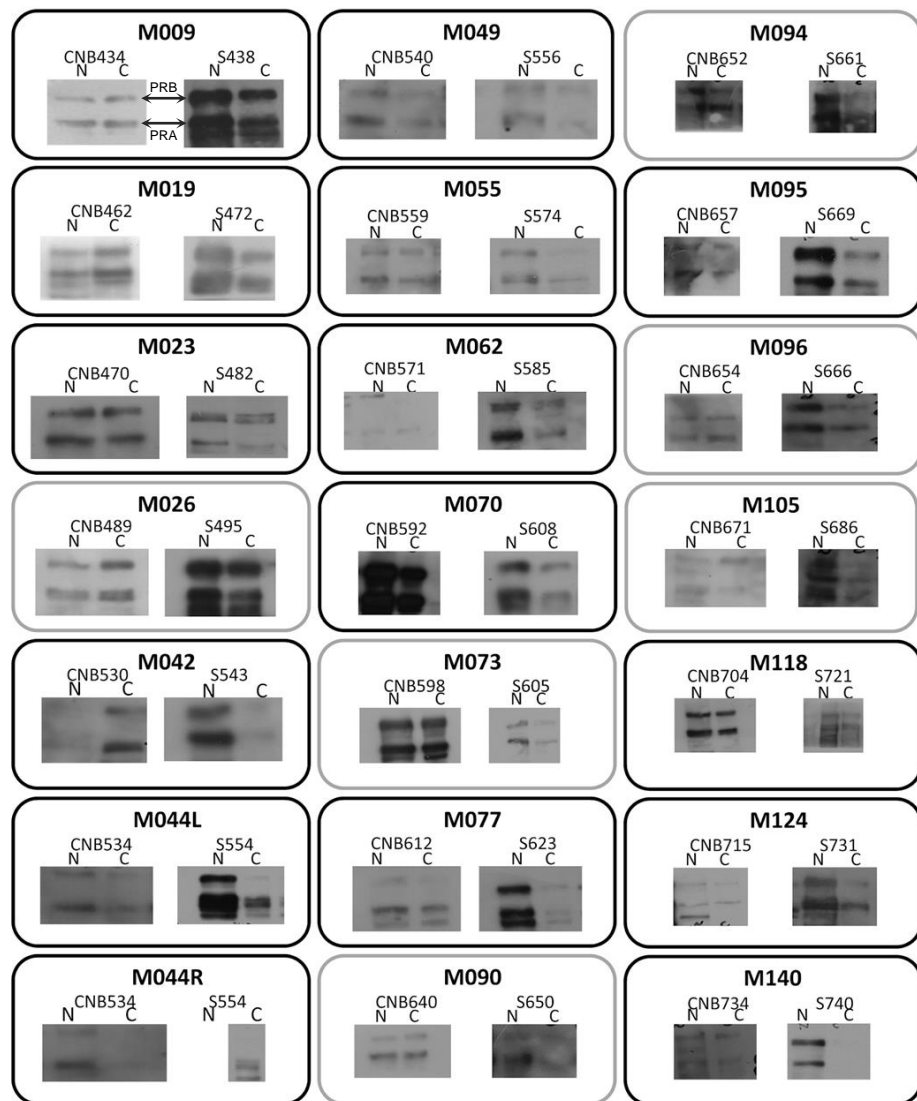


A

Patient	CNB			S		
	Nuc*	Cyt*	Nuc/Cyt#	Nuc*	Cyt*	Nuc/Cyt#
M009						
M019						
M023						
M026						
M042						
M044L						
M044R						
M049						
M055						
M062						
M070						
M073						
M077						
M090						
M094						
M095						
M096						
M105						
M118						
M124						
M140						

PRA-H Nuc/Cyt ≤1
 PRB-H Nuc/Cyt ≥1
 Equimolar Nuc ≈ Cyt
 Not determined

B

Supplementary Figure S1. A, Prevailing PR isoforms before and after mifepristone treatment and their prevailing nuclear (Nuc) or cytosolic (Cyt) localization in western blot studies. *: Prevailing PR isoforms in Western blot studies; #: Distribution of PR in the Nuc or Cyt compartments; CNB: Core needle biopsy, S: Surgical sample. In grey font: Mifepristone unresponsive tumors by Ki67 criteria. **B**, Representative western blots of CNB and surgical samples from all patients. The upper band is PRB and the lower band PRA, as labeled in the first set.