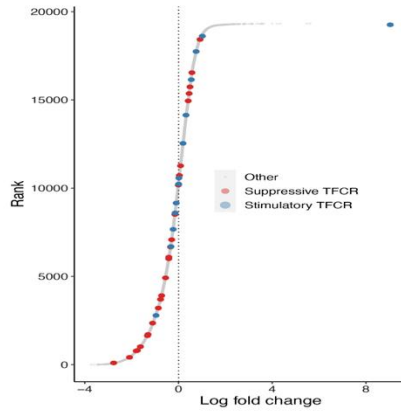


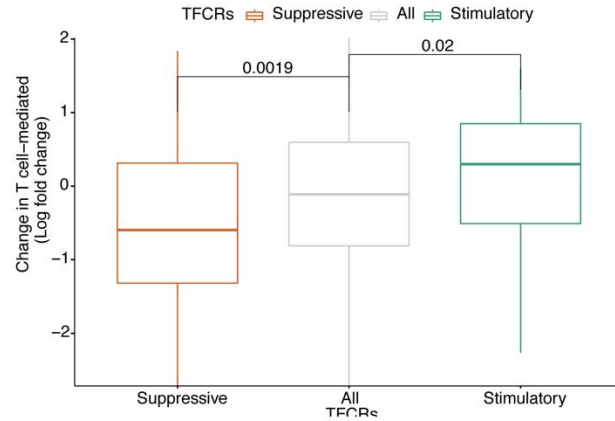
A



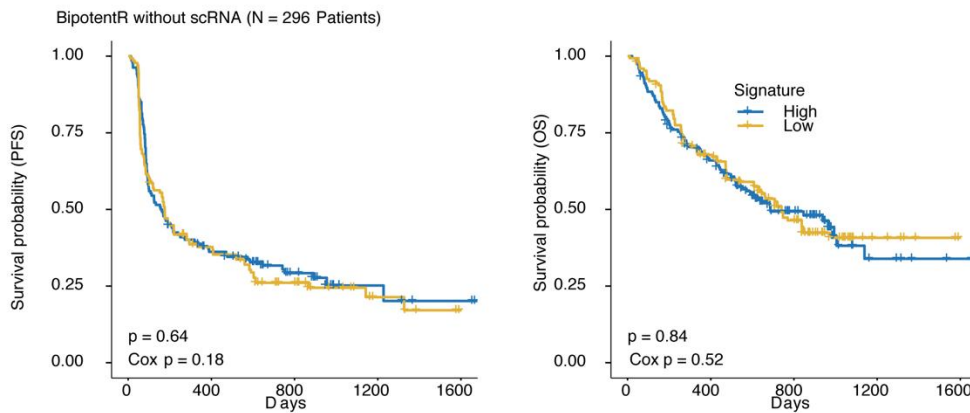
B



C



D



**Fig. S14. Evaluation of bulk-BipotentR (BipotentR without single-cell sub-module).**

(A) Method outline of bulk-BipotentR. (B,C) Effect of knockout of targets identified by bulk-BipotentR on T-cell mediated killing of cancer cells in CRISPR experiments, displayed using rankplot (B) and boxplot (C). (D) Kaplan–Meier plots showing progression-free survival and overall survival differences for patients receiving anti-PD1 between the low-risk and high-risk groups defined by the median value of the tumor activity of targets (estimated using an approach similar to BTAS).