

## Appendix

### Appendix Table A1

#### Search Terms

<i>PubMed</i>	
Search Term	Search String
<b>Implementation</b>	(Adopt[tiab] OR adopts[tiab] OR adopted[tiab] OR adoption[tiab] NOT "adoption"[MeSH Terms] OR Implement[tiab] OR implements[tiab] OR implementation[tiab] OR implementation[ot] OR "health plan implementation"[MeSH Terms] OR "quality improvement*" [tiab] OR "quality improvement"[tiab] OR "quality improvement"[MeSH Terms] OR diffused[tiab] OR diffusion[tiab] OR "diffusion of innovation"[MeSH Terms] OR "health information exchange"[MeSH Terms] OR "knowledge translation*" [tw] OR "knowledge exchange*" [tw])  AND
<b>Evidence-Based Practice</b>	("empirically supported treatment"[All Fields] OR "evidence based practice*" [All Fields] OR "evidence based treatment"[All Fields] OR "evidence-based practice"[MeSH Terms] OR "evidence-based medicine"[MeSH Terms] OR innovation[tw] OR guideline[pt] OR (guideline[tiab] OR guideline'[tiab] OR guideline"[tiab] OR guideline'pregnancy[tiab] OR guideline's[tiab] OR guideline1[tiab] OR guideline2015[tiab] OR guidelinebased[tiab] OR guidelineed[tiab] OR guidelinedevelopment[tiab] OR guidelinee[tiab] OR guidelineitem[tiab] OR guidelineon[tiab] OR guideliner[tiab] OR guideliner'[tiab] OR guidelinerecommended[tiab] OR guidelinereLATED[tiab] OR guidelinertrade[tiab] OR guidelines[tiab] OR guidelines'[tiab] OR guidelines'quality[tiab] OR guidelines's[tiab] OR guidelines1[tiab] OR guidelines19[tiab] OR guidelines2[tiab] OR guidelines20[tiab] OR guidelinesfemale[tiab] OR guidelinesfor[tiab] OR guidelinesin[tiab] OR guidelinesmay[tiab] OR guidelineson[tiab] OR guidelinesS[tiab] OR guidelinesthat[tiab] OR guidelinestrade[tiab] OR guidelineswiki[tiab]) OR "guidelines as topic"[MeSH Terms] OR "best practice*" [tw])  AND
<b>Measure</b>	(instrument[tw] OR (survey[tw] OR survey'[tw] OR survey's[tw] OR survey100[tw] OR survey12[tw] OR survey1988[tw] OR survey226[tw] OR survey36[tw] OR surveyability[tw] OR surveyable[tw] OR surveyance[tw] OR surveyans[tw] OR surveyansin[tw] OR surveybetween[tw] OR surveyd[tw] OR surveydagger[tw] OR surveydata[tw] OR surveydelhi[tw] OR surveyed[tw] OR surveyedandtestedthe[tw] OR surveyedpopulation[tw] OR surveyees[tw] OR surveyelicited[tw] OR surveyer[tw] OR surveyes[tw] OR surveyeyed[tw] OR

---

surveyform[tw] OR surveyfreq[tw] OR surveygizmo[tw] OR surveyin[tw] OR  
surveying[tw] OR surveying'[tw] OR surveyings[tw] OR surveylogistic[tw] OR  
surveymaster[tw] OR surveymeans[tw] OR surveymeter[tw] OR  
surveymonkey[tw] OR surveymonkey's[tw] OR surveymonkeytrade[tw] OR  
surveyng[tw] OR surveyor[tw] OR surveyor'[tw] OR surveyor's[tw] OR  
surveyors[tw] OR surveyors'[tw] OR surveyortrade[tw] OR surveypatients[tw]  
OR surveyphreg[tw] OR surveyplus[tw] OR surveyprocess[tw] OR surveyreg[tw]  
OR surveys[tw] OR surveys'[tw] OR surveys'food[tw] OR surveys'usefulness[tw]  
OR surveysclub[tw] OR surveyselect[tw] OR surveyset[tw] OR surveyset'[tw] OR  
surveyspot[tw] OR surveystrade[tw] OR surveysuite[tw] OR surveytaken[tw] OR  
surveythese[tw] OR surveytm[tw] OR surveytracker[tw] OR surveytrade[tw] OR  
surveyvas[tw] OR surveywas[tw] OR surveywiz[tw] OR surveyxact[tw]) OR  
(questionnaire[tw] OR questionnaire'[tw] OR questionnaire'07[tw] OR  
questionnaire'midwife[tw] OR questionnaire's[tw] OR questionnaire1[tw] OR  
questionnaire11[tw] OR questionnaire12[tw] OR questionnaire2[tw] OR  
questionnaire25[tw] OR questionnaire3[tw] OR questionnaire30[tw] OR  
questionnaireand[tw] OR questionnairebased[tw] OR questionnairebefore[tw] OR  
questionnaireconsisted[tw] OR questionnairecopyright[tw] OR questionnaired[tw]  
OR questionnairedeveloped[tw] OR questionnaireepq[tw] OR  
questionnaireforpediatric[tw] OR questionnairegrtr[tw] OR questionnairehas[tw]  
OR questionnaireitaq[tw] OR questionnairel02[tw] OR  
questionnairemcesqscale[tw] OR questionnairenurse[tw] OR questionnaireon[tw]  
OR questionnaireonline[tw] OR questionnairepf[tw] OR questionnairephq[tw] OR  
questionnaires[tw] OR questionnaires'[tw] OR questionnaires'[tw] OR  
questionnaires"[tw] OR questionnairescan[tw] OR  
questionnairesdq11adolescent[tw] OR questionnaires[tw] OR  
questionnairetrade[tw] OR questionnaireure[tw] OR questionnairev[tw] OR  
questionnairewere[tw] OR questionnairex[tw] OR questionnairey[tw]) OR  
instruments[tw] OR "surveys and questionnaires"[MeSH Terms] OR "surveys and  
questionnaires"[MeSH Terms] OR measure[tiab] OR (measurement[tiab] OR  
measurement'[tiab] OR measurement's[tiab] OR measurement1[tiab] OR  
measuremental[tiab] OR measurementd[tiab] OR measuremented[tiab] OR  
measurementexhaled[tiab] OR measurementff[tiab] OR measurementin[tiab] OR  
measuremention[tiab] OR measurementis[tiab] OR  
measurementkomputation[tiab] OR measurementl[tiab] OR  
measurementmanometry[tiab] OR measurementmethods[tiab] OR  
measurementof[tiab] OR measurementon[tiab] OR measurementpro[tiab] OR  
measurementresults[tiab] OR measurements[tiab] OR measurements'[tiab] OR  
measurements's[tiab] OR measurements0[tiab] OR measurements5[tiab] OR  
measurementsa[tiab] OR measurementsare[tiab] OR measurementscanbe[tiab] OR  
measurementscheme[tiab] OR measurementsfor[tiab] OR measurementsgave[tiab]  
OR measurementsin[tiab] OR measurementsindicate[tiab] OR  
measurementsmoking[tiab] OR measurementsof[tiab] OR measurementson[tiab]  
OR measurementsreveal[tiab] OR measurementss[tiab] OR

---

	<p>measurementswere[tiab] OR measurementtime[tiab] OR measurementts[tiab] OR measurementusing[tiab] OR measurementws[tiab]) OR measures[tiab] OR inventory[tiab])</p> <p>AND</p>
<b>Mental Health</b>	<p>("mental health"[tw] OR "behavioral health"[tw] OR "behavioural health"[tw] OR "mental disorders"[MeSH Terms] OR "psychiatry"[MeSH Terms] OR psychiatry[tw] OR psychiatric[tw] OR "behavioral medicine"[MeSH Terms] OR "mental health services"[MeSH Terms] OR (psychiatrist[tw] OR psychiatrist'[tw] OR psychiatrist's[tw] OR psychiatristes[tw] OR psychiatristis[tw] OR psychiatrists[tw] OR psychiatrists'[tw] OR psychiatrists'awareness[tw] OR psychiatrists'opinion[tw] OR psychiatrists'quality[tw] OR psychiatristsand[tw] OR psychiatristsare[tw]) OR "hospitals, psychiatric"[MeSH Terms] OR "psychiatric nursing"[MeSH Terms])</p> <p>AND</p>
<b>Intervention Source</b>	<p>"intervention source" OR "grass-roots effort" OR "innovation source" OR "treatment source" OR "guideline source"</p> <p>OR</p>
<b>Evidence Strength &amp; Quality</b>	<p>"evidence strength*" OR "evidence quality" OR "validity of evidence" OR "source of evidence" OR "quality of evidence"</p> <p>OR</p>
<b>Relative Advantage</b>	<p>"relative advantage" OR "improvement trial*" OR improvement[tw]</p> <p>OR</p>
<b>Adaptability</b>	<p>adapt[tw] OR adapted [tw] Or adaptation[tw] OR adapts[tw] OR tailor* OR refine* OR reinvent* OR flexible[tw] OR flexibility*[tw]</p> <p>OR</p>
<b>Trialability</b>	<p>pilot*[tw] OR usability [tw] OR trialability OR pilot*[tw] OR usability [tw]</p> <p>OR</p>
<b>Complexity</b>	<p>complexity [tw] OR "difficulty of intervention" OR intricacy[tw] OR complicatedness [tw] OR length [tw] OR breadth [tw]</p> <p>OR</p>
<b>Design Quality &amp; Packaging</b>	<p>"design quality" OR "design packag*" OR "intervention packag*" OR "treatment packag*" OR "innovation packag*" OR "guideline packag*" OR "intervention presentation" OR "treatment presentation" OR "innovation presentation" OR "guideline presentation"</p>





















(Scott et al., 2017)

Cook Implementation Measure (Cook et al., 2012)

2 0 0 0 1 0 0 0 0 2

Cook Implementation Measure (complexity) (Cook et al., 2012)

2 0 0 0 0 0 0 0 0 2

Peltzer SBI Implementation Attitude Questionnaire (Peltzer et al., 2008)

0 0 0 0 0 0 0 0 0 0

Peltzer SBI Implementation Attitude Questionnaire (Complexity) (Peltzer et al., 2008)

0 0 0 0 0 0 0 0 0 0

Design Quality & Packaging

Measure Name	Internal Consistency	Convergent Validity	Discriminant Validity	Concurrent Validity	Predictive Validity	Known - Groups Validity	Structural Validity	Responsiveness	Norms	Total Score
--------------	----------------------	---------------------	-----------------------	---------------------	---------------------	-------------------------	---------------------	----------------	-------	-------------

Moore & Benbasat Adoption of Information Technology Innovation Measure (Moore & Benbasat, 1991)

3 0 0 0 0 0 0 0 0 3

Moore & Benbasat Adoption of Information Technology Innovation Measure (result Demonstrability)

3 0 0 0 0 0 0 0 0 3

y Subscale)  
(Moore &  
Benbasat,  
1991)

Malte Post-  
treatment  
Smoking  
Cessation  
Beliefs  
Measure  
(Malte et al.,  
2013)

0 0 0 0 0 0 0 0 0 0

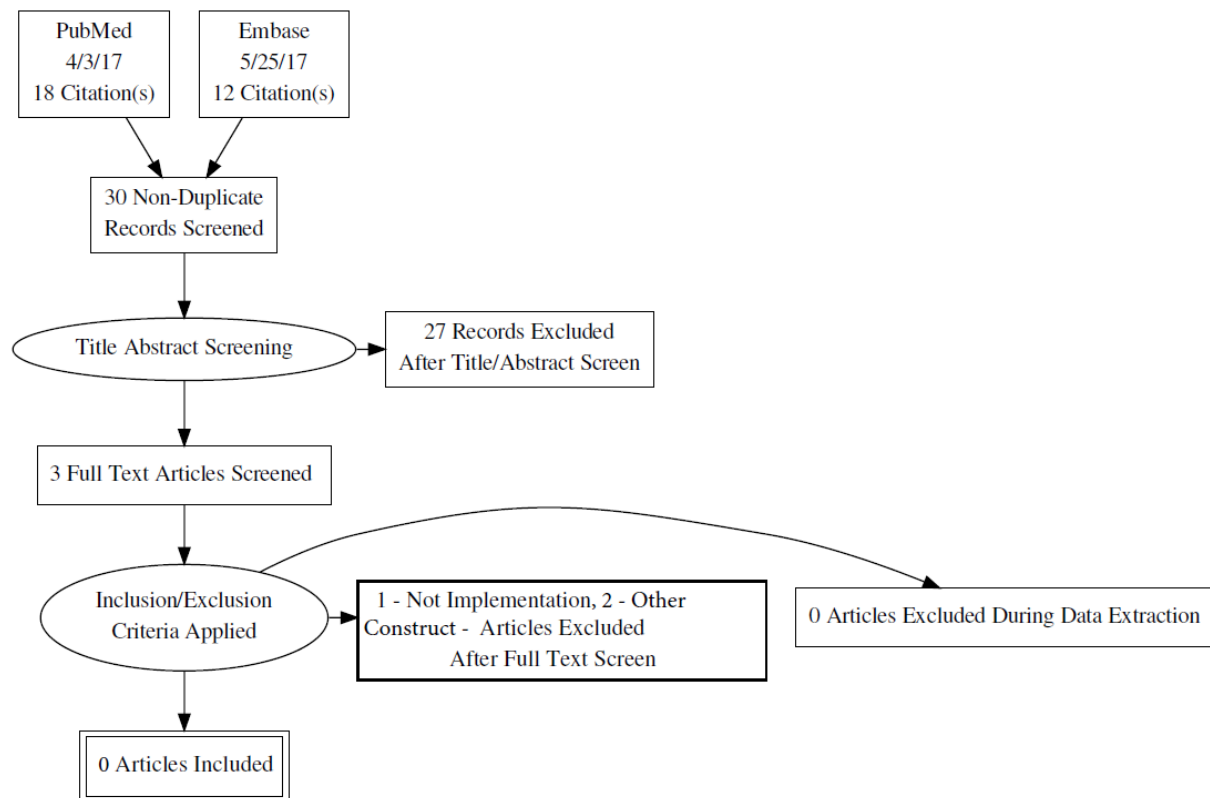
Malte Post-  
treatment  
Smoking  
Cessation  
Beliefs  
Measure  
(design  
Quality) (Malte  
et al., 2013)

0 0 0 0 0 0 0 0 0 0

---

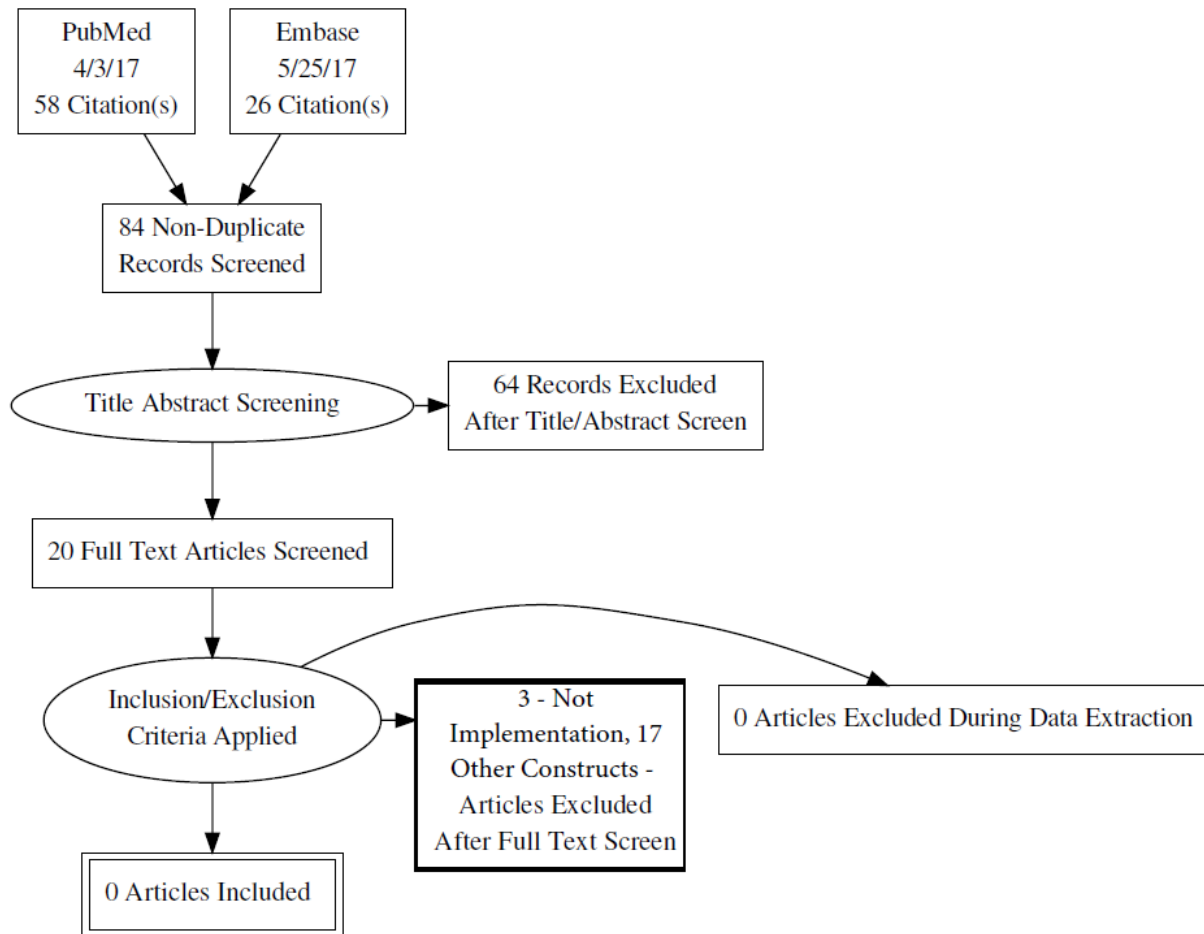
**Figure A1**

*PRISMA Flowchart for Intervention Source*



**Figure A2**

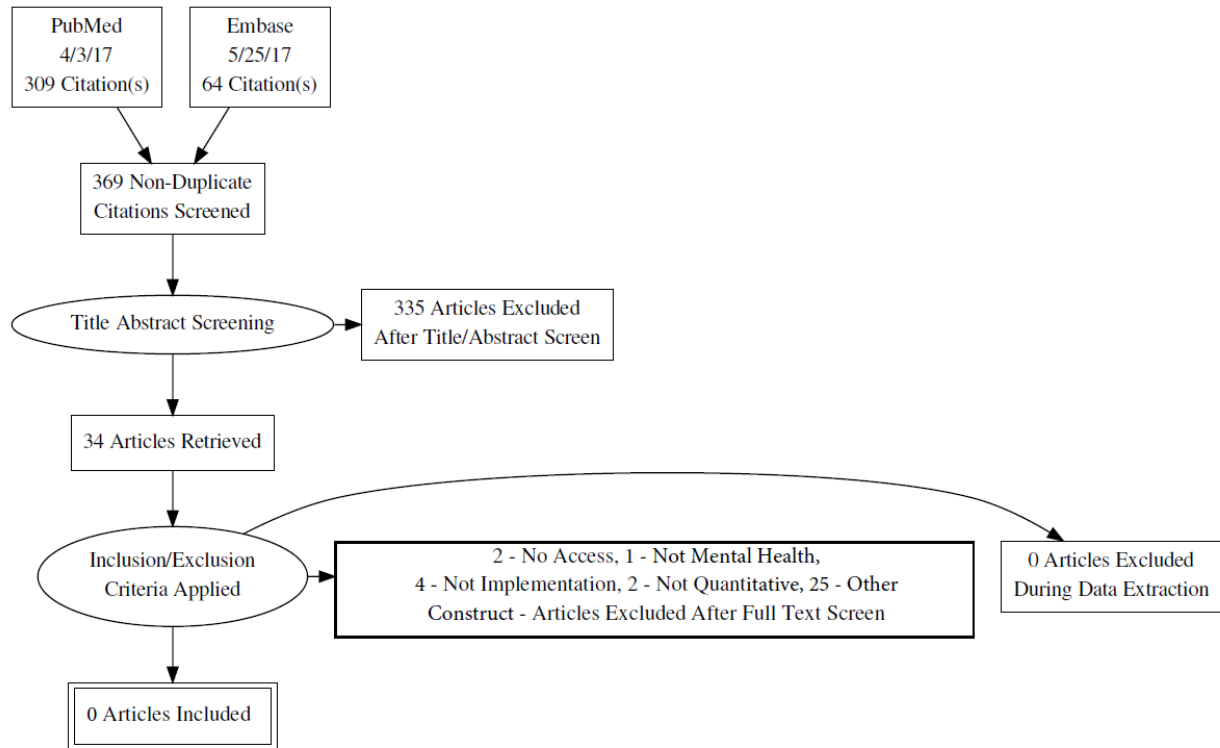
*PRISMA Flowchart for Evidence Strength and Quality*





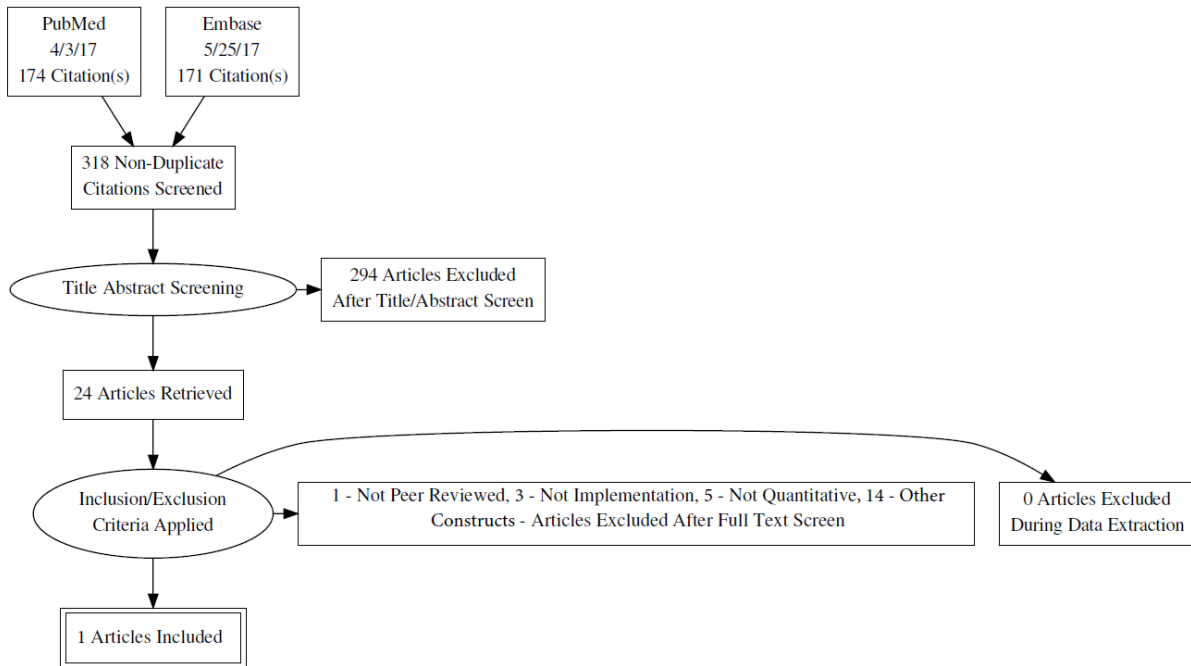
**Figure A3**

*PRISMA Flowchart for Relative Advantage*



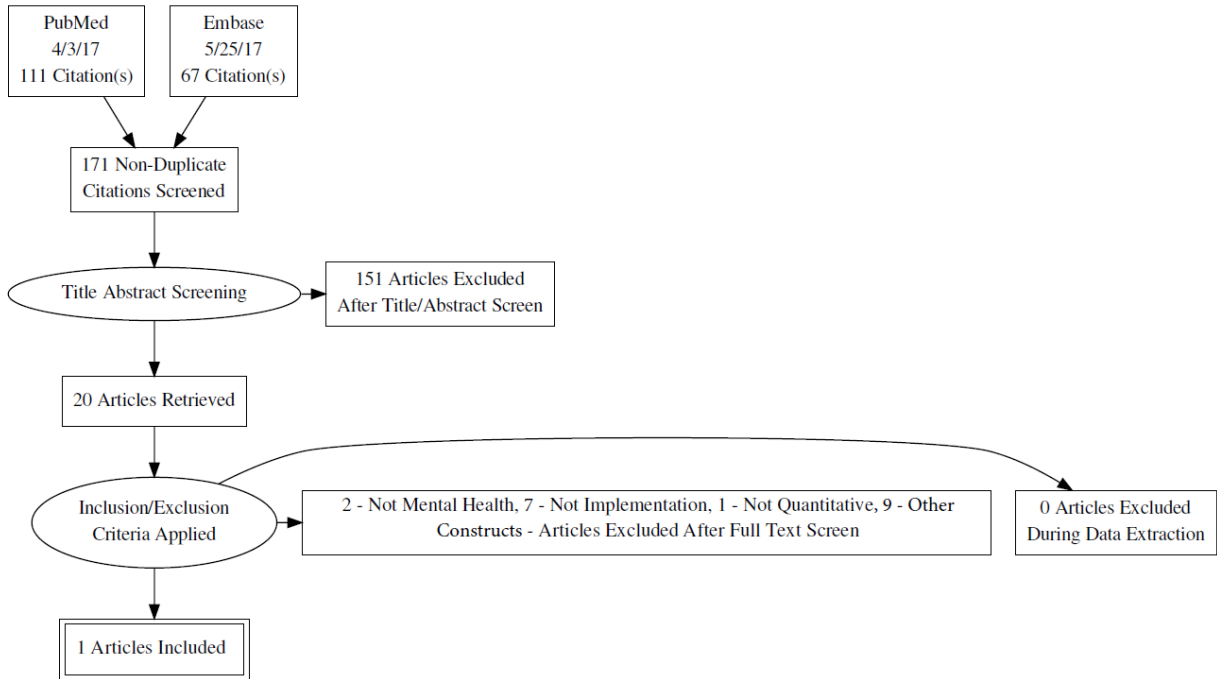
**Figure A4**

*PRISMA Flowchart for Adaptability*



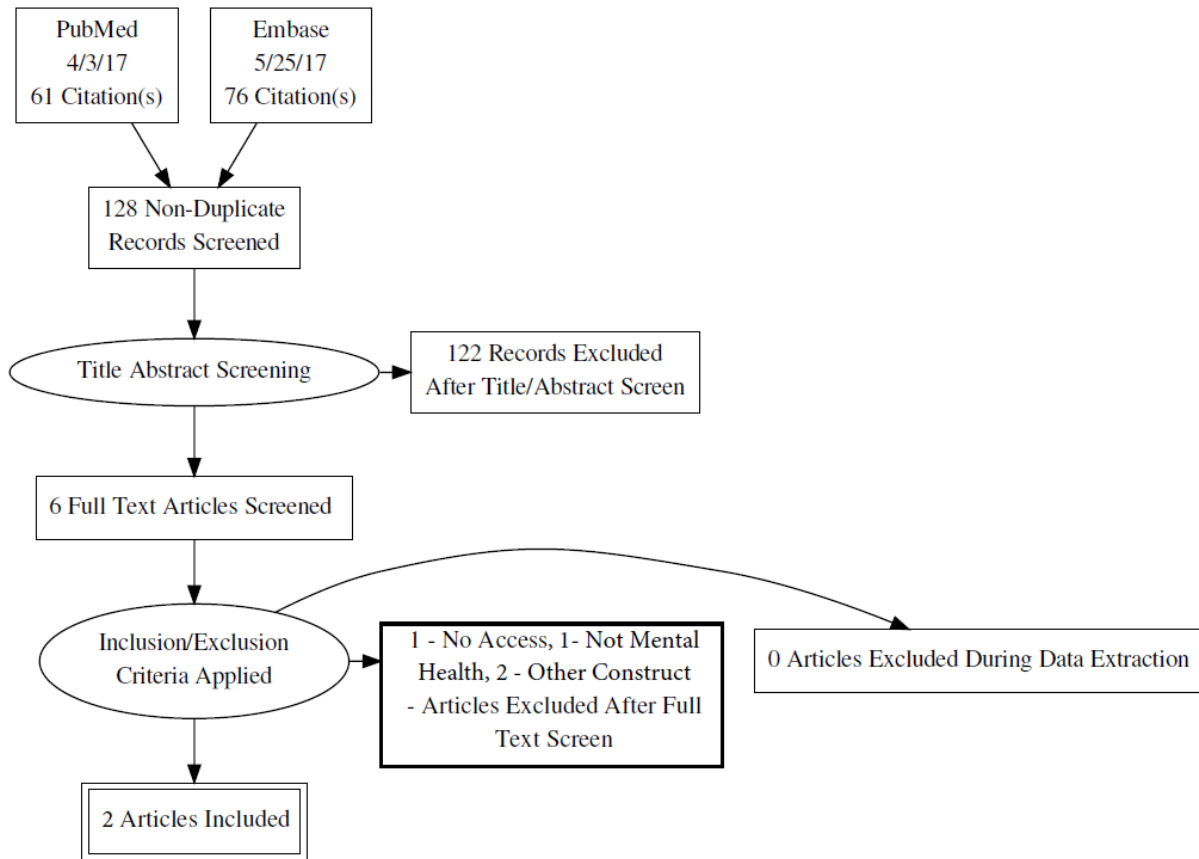
**Figure A5**

*PRISMA Flowchart for Trialability*



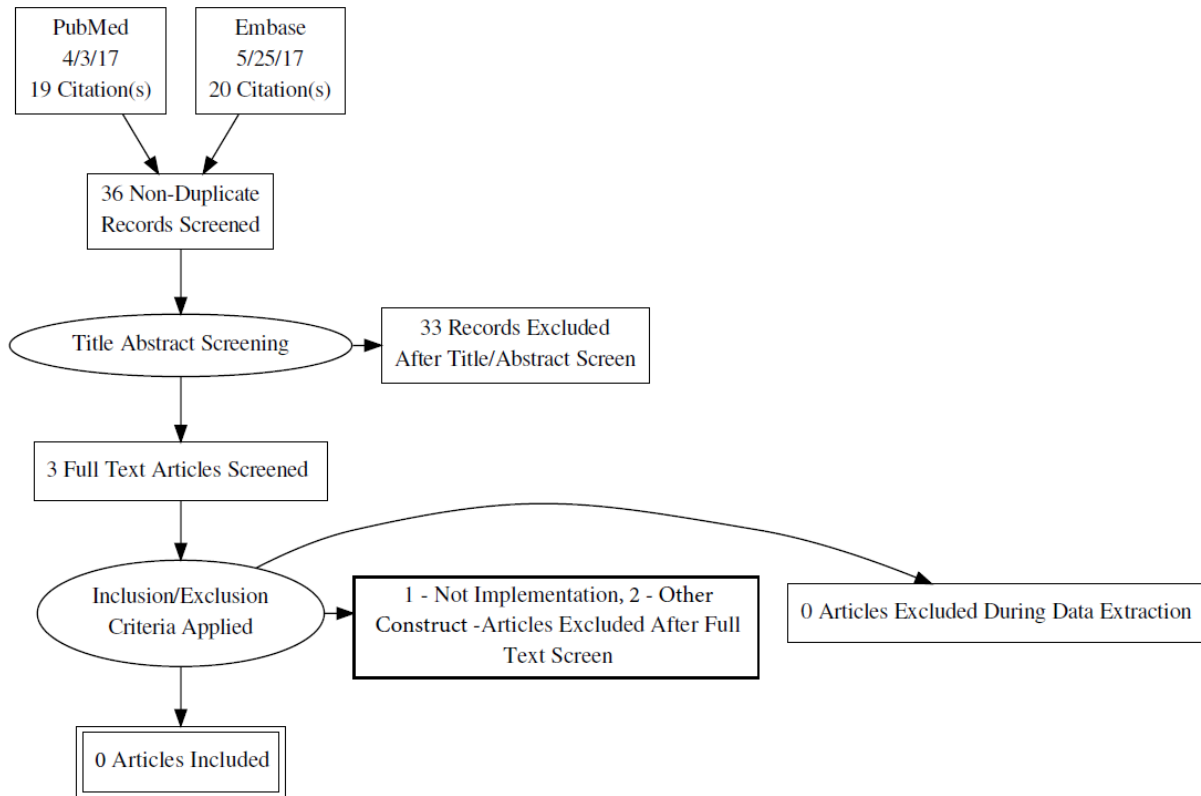
**Figure A6**

*PRISMA Flowchart for Complexity*



**Figure A7**

*PRISMA Flowchart for Design Quality and Packaging*



**Figure A8**

*PRISMA Flowchart for Cost*