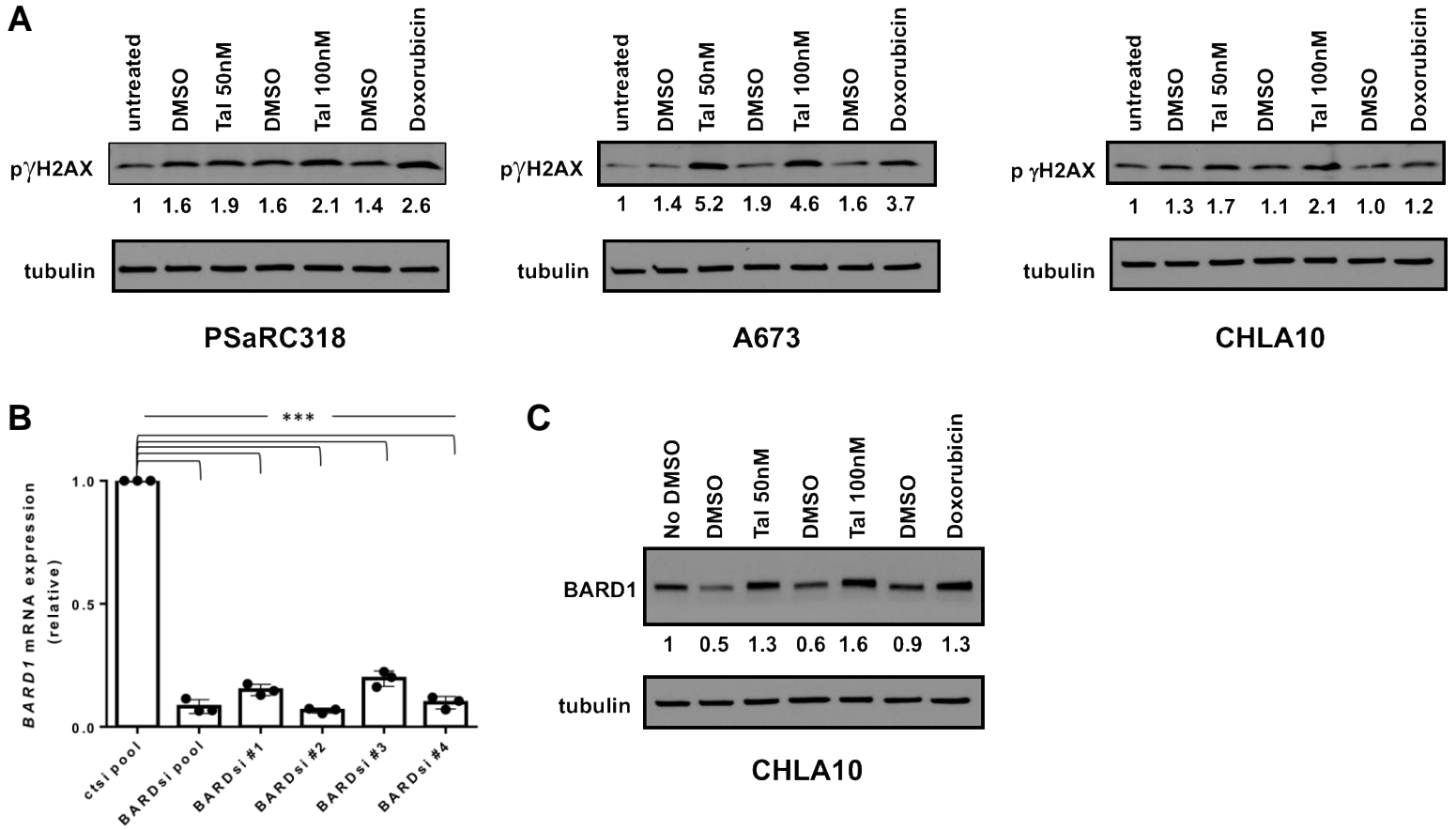


Supplemental Figure S1



Supplemental Figure S1.

Additional protein/mRNA expression data (corresponding to Figure 2). **A**, Western blots for p γ H2AX in PSaRC318, A673, and CHLA10 Ewing sarcoma cells under the treatment conditions noted. These data correspond to the immunofluorescence data for p γ H2AX in Figure 2B. **B**, A673 Ewing sarcoma cells were transfected with SMART pool control (non-targeting) siRNA (ctsi), SMART pool BARDsiRNA, or one of four individual BARD1siRNAs from the pool (#1-#4) for 72 hours. Resulting RNA(cDNA) was subjected to RT-PCR analysis for *BARD1*. **C**, Western blot for BARD1 expression in CHLA10 cells treated with DMSO, Talazoparib (Tal), doxorubicin (20nM) or untreated. Values under western blots in **A** and **C** represent relative expression as determined by densitometry analysis. Experiments were performed minimally in biological triplicate. *** denotes $p < 0.0001$, error bars denote S.D.