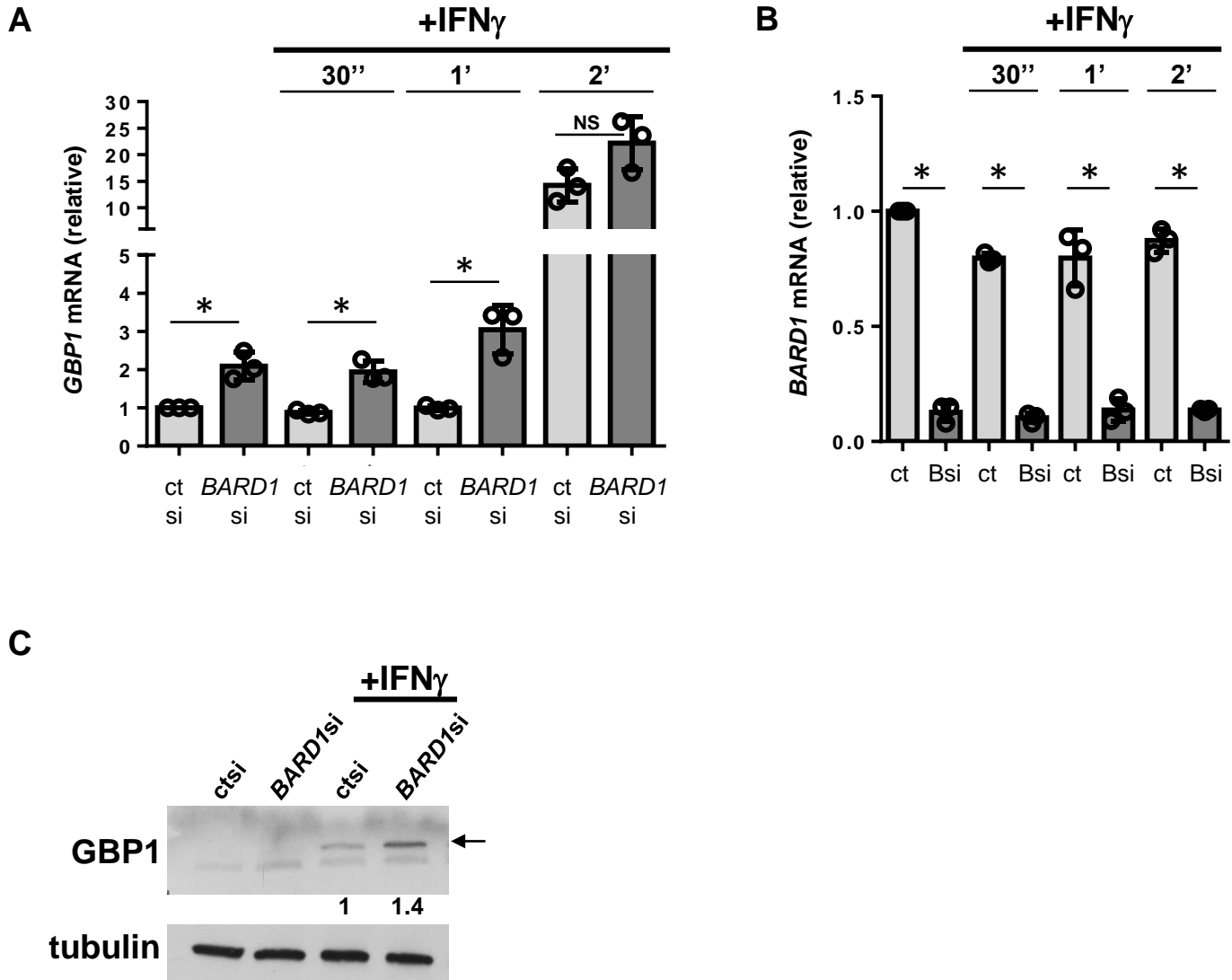


# Supplemental Figure S3



## Supplemental Figure S3.

**Interferon- $\gamma$ -induced GBP1 expression in A673 Ewing sarcoma cells.** A673 cells were treated with control (ctsi) or *BARD1* (Bsi) siRNA for 72 hours. Cells were then stimulated with vehicle or 100U/mL IFN- $\gamma$  for the times indicated and RNA was isolated. qRT-PCR analysis for **A**, *GBP1* and **B**, *BARD1* was performed. **C**, Western blot analysis of GBP1 expression in A673 cells treated with ctsi or BARD1si and vehicle or interferon (+ IFN- $\gamma$ ). Tubulin is included as a loading control. Normalized densitometry values are listed below the blot. Experiments were performed in biological triplicate. \* denotes  $p < 0.05$ , NS=not significant ( $p > 0.05$ ). Error bars denote S.D.