

Supplementary Online Content

Cooperberg MR, Meeks W, Fang R, Gaylis FD, Catalona WJ, Makarov DV. Time trends and variation in the use of active surveillance for management of low-risk prostate cancer in the US. *JAMA Netw Open*. 2023;6(3):e231439. doi:10.1001/jamanetworkopen.2023.1439

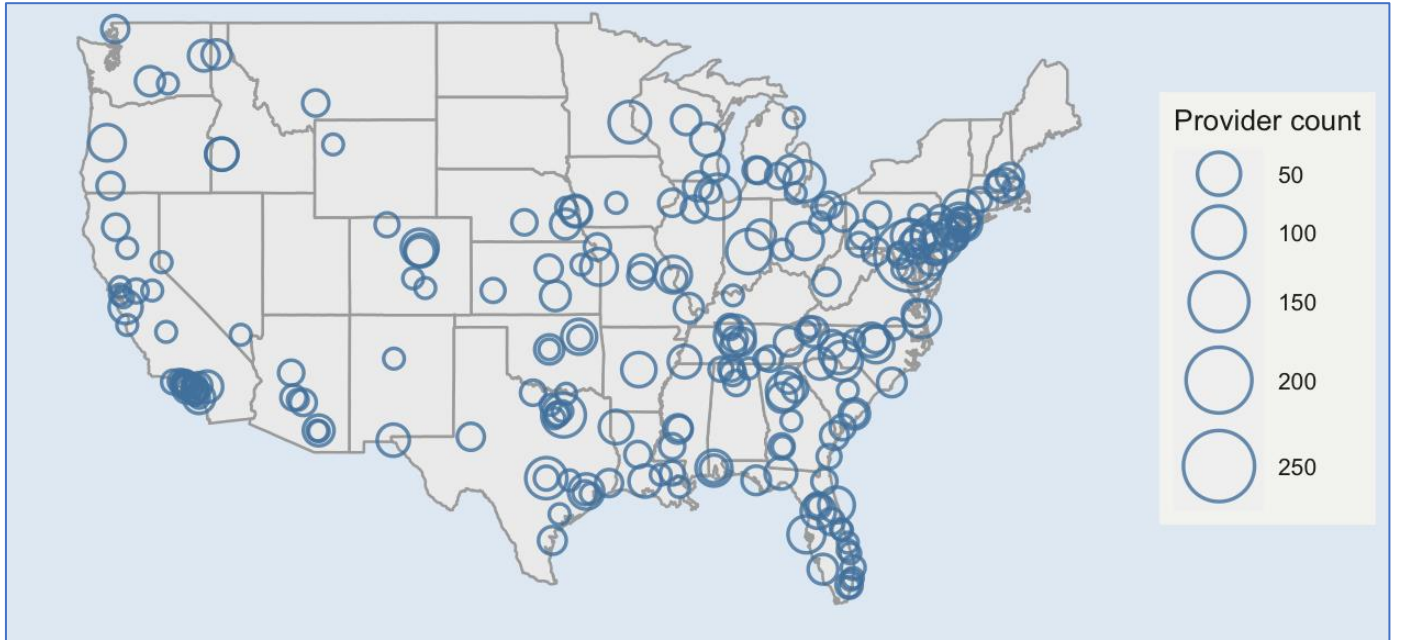
eFigure 1. Locations of AQUA Practices

eFigure 2. CONSORT-Style Patient Inclusion Diagram

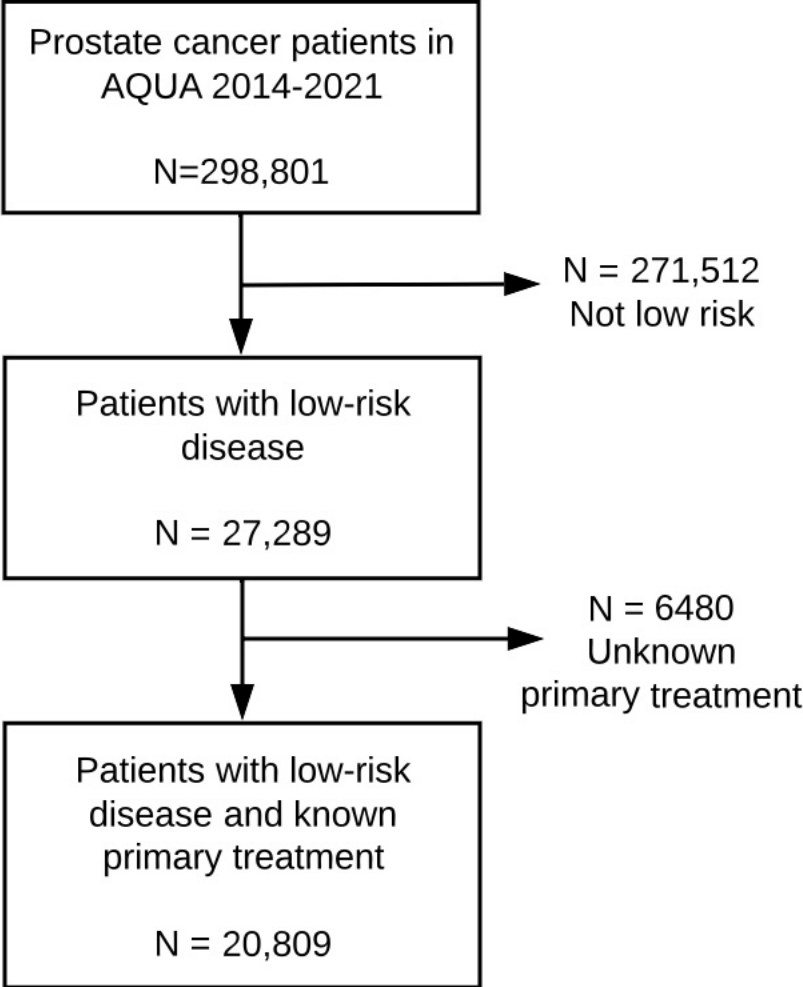
eFigure 3. Treatment of Low-risk Prostate Cancer Over Time Among Black (Top Panel) and White (Bottom Panel) Patients

This supplementary material has been provided by the authors to give readers additional information about their work.

eFigure 1. Locations of AQUA Practices
Circle sizes represent numbers of urology providers per practice.



eFigure 2. CONSORT-Style Patient Inclusion Diagram



eFigure 3. Treatment of Low-risk Prostate Cancer Over Time Among Black (Top Panel) and White (Bottom Panel) Patients

ADT = androgen deprivation monotherapy, EBRT = external-beam radiation therapy

