

Supplement for:

Hematopoietic stem cell boost for persistent neutropenia after CAR-T therapy: a GLA/DRST study

Nico Gagelmann, Gerald Georg Wulf, Johannes Düll, Bertram Glass, Pearl van Heteren, Bastian von Tresckow, Monika Fischer, Olaf Penack, Francis Ayuk, Herrmann Einsele, Udo Holtick, Julia Thomson, Peter Dreger, Nicolaus Kröger

Content

Supplemental Table 1. Bridging regimen and center cohorts.

Supplemental Figure 1. Timing of boost and neutrophil count over time.

Supplemental Figure 2. Timing of boost and platelet count over time.

Supplemental Figure 3. Correlation of time to response with duration of neutropenia prior to hematopoietic stem cell boost.

Supplemental Figure 4. Overall survival of total cohort.

Supplemental Figure 5. Progression-free survival of total cohort.

Supplemental Figure 6. Overall survival according to indication for boost.

Supplemental Figure 7. Overall survival according to CAR-T product.

Supplemental Figure 8. Progression-free survival according to CAR-T product.

Supplemental Figure 9. Overall survival according to time to boost.

Supplemental Figure 10. Progression-free survival according to time to boost.

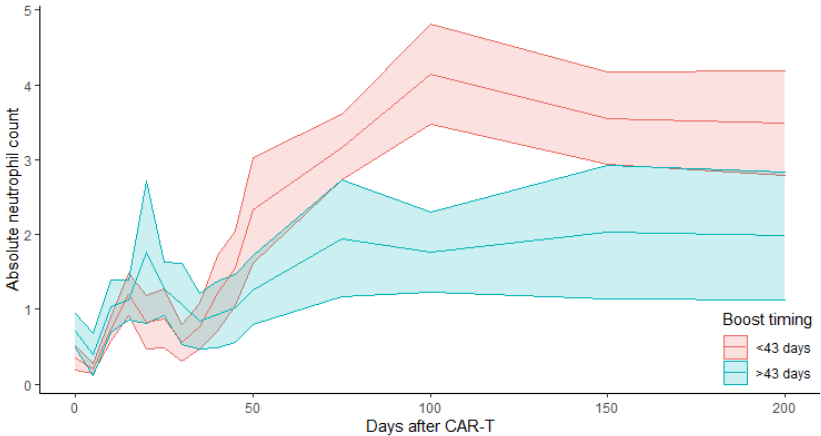
Supplemental Figure 11. Partial splines for duration of neutropenia and hazard for death.

Supplemental Figure 12. Partial splines for time to boost and hazard for death.

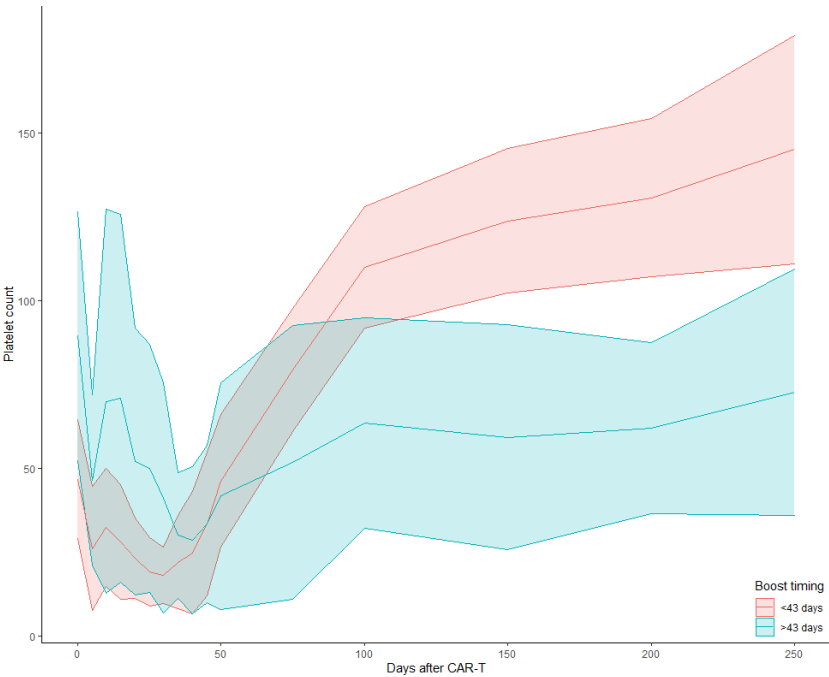
Supplemental Table 1. Bridging regimen and center cohorts.

Bridging regimen	Number
R-ICE	6
R-Benda/Pola	4
Debulking radiation	1
R-Dexamethasone	2
Ibrutinib	1
Matrix	1
Methotrexate	1
Pola-R-ICE	5
R-GemOx	1
Radiation+Bortezomib	1
VIPOR	1
Total	24
Patients	
Hamburg	10
Göttingen	5
Heidelberg	4
Würzburg	3
Helios Berlin	3
Charité Berlin	2
Cologne	2
Essen	2
Abbreviations: R, rituximab; Benda, bendamustin; Pola, polatuzumab; ICE, ifosfamid + carboplatine + etoposide; GemOx, gemcitabine + oxaliplatin; VIPOR, venetoclax + ibrutinib + prednisone + obinutuzumab + lenalidomide	

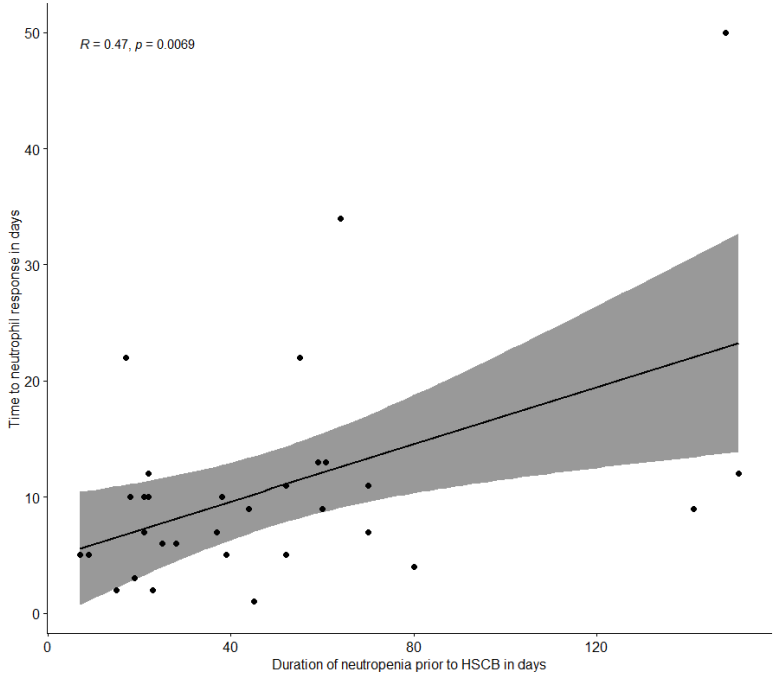
Supplemental Figure 1. Timing of boost and neutrophil count over time.



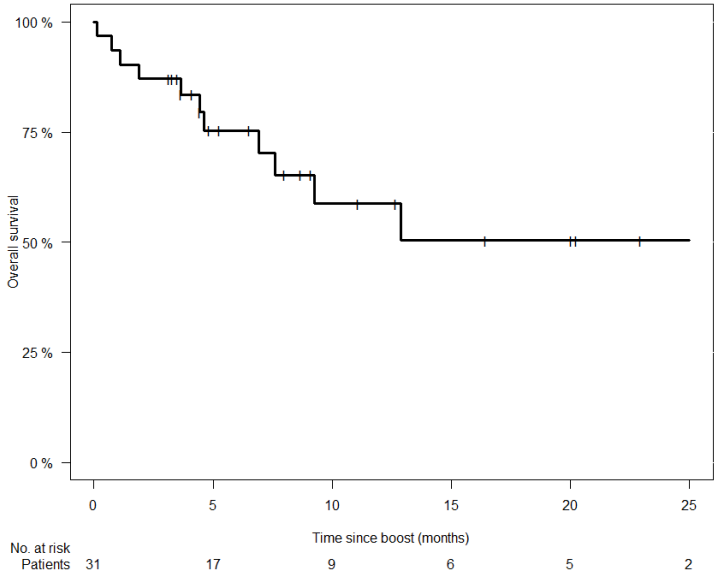
Supplemental Figure 2. Timing of boost and platelet count over time.



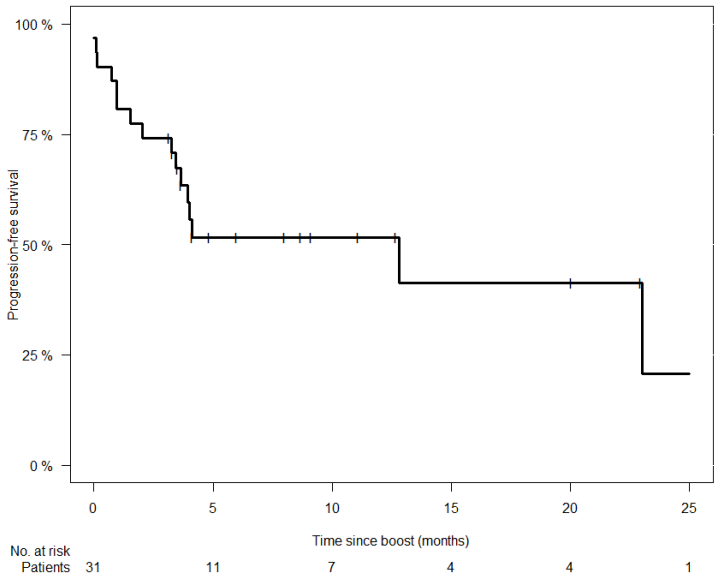
Supplemental Figure 3. Correlation of time to response with duration of neutropenia prior to hematopoietic stem cell boost.



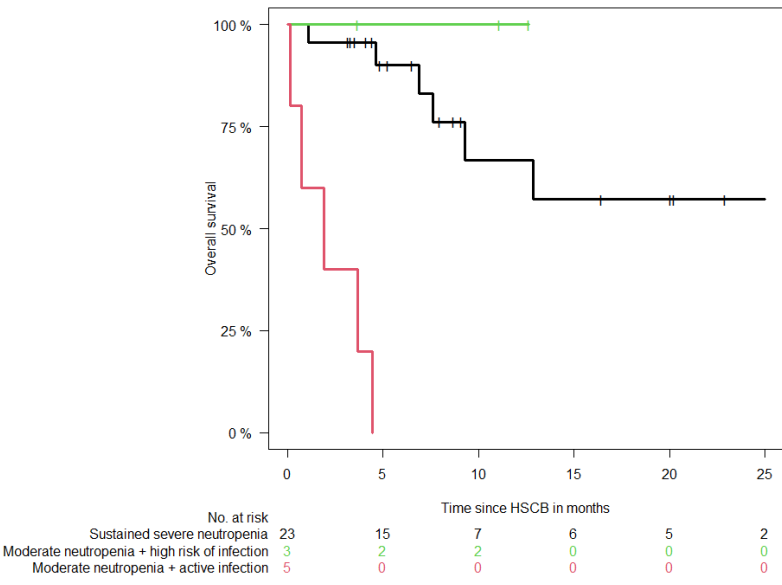
Supplemental Figure 4. Overall survival of total cohort.



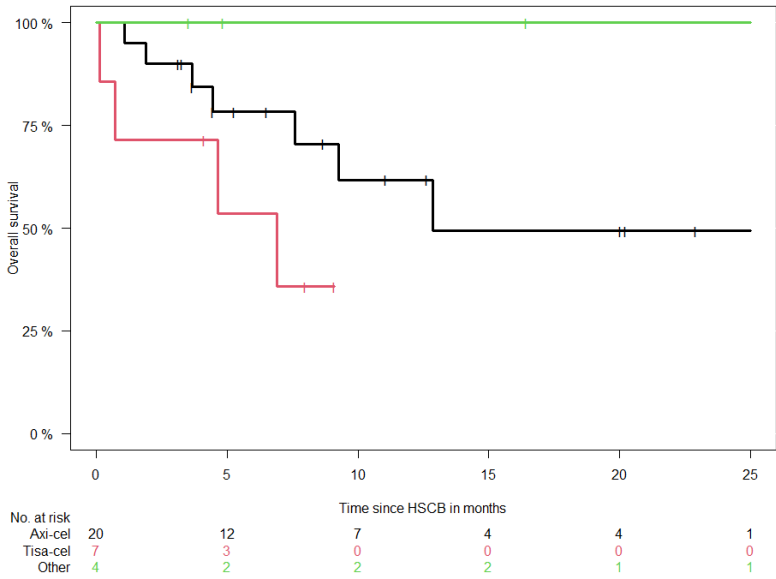
Supplemental Figure 5. Progression-free survival of total cohort.



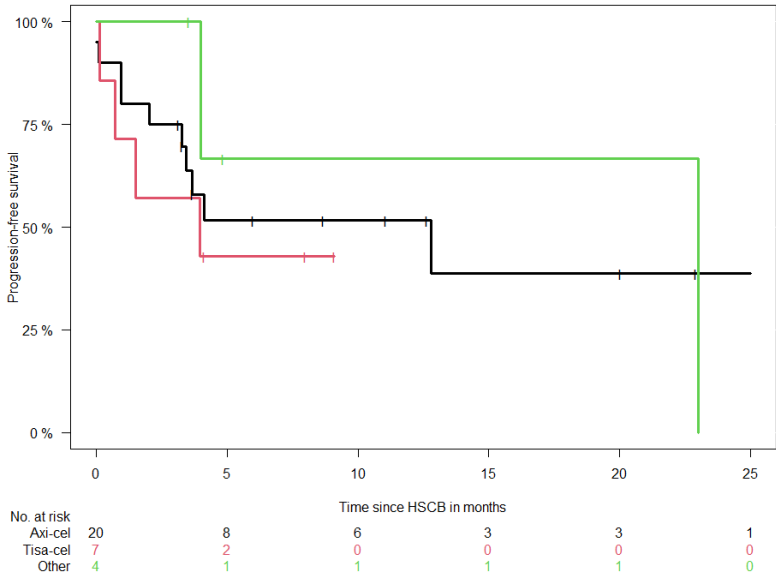
Supplemental Figure 6. Overall survival according to indication for boost.



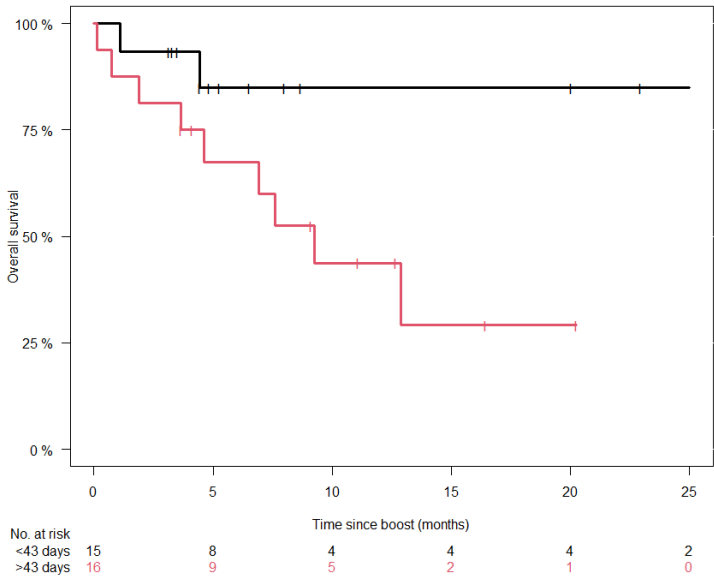
Supplemental Figure 7. Overall survival according to CAR-T product.



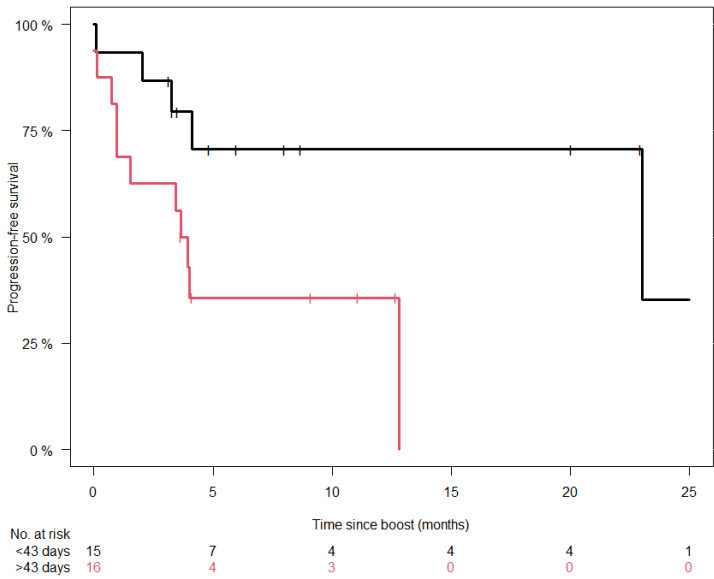
Supplemental Figure 8. Progression-free survival according to CAR-T product.



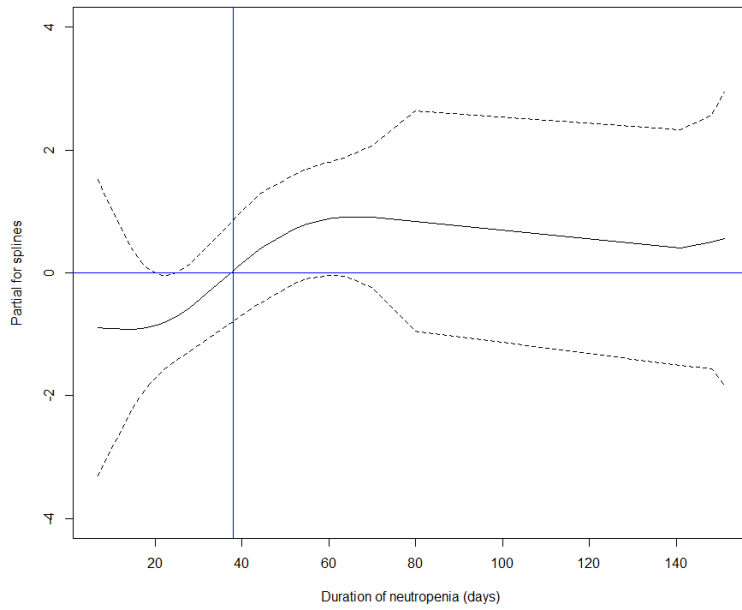
Supplemental Figure 9. Overall survival according to time to boost.



Supplemental Figure 10. Progression-free survival according to time to boost.



Supplemental Figure 11. Partial splines for duration of neutropenia and hazard for death.



Supplemental Figure 12. Partial splines for time to boost and hazard for death.

