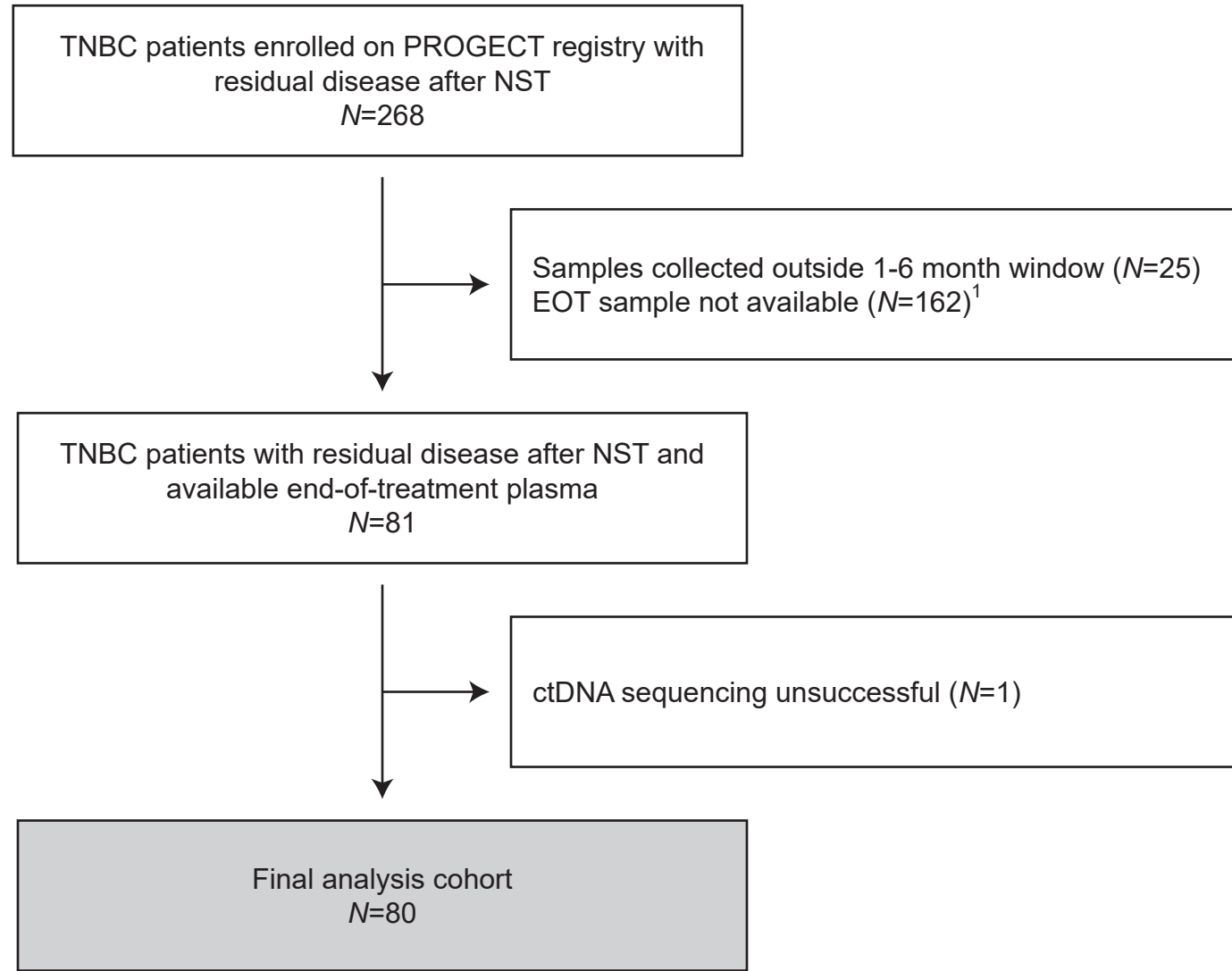


Supplementary Figure 1

a

REMARK Diagram

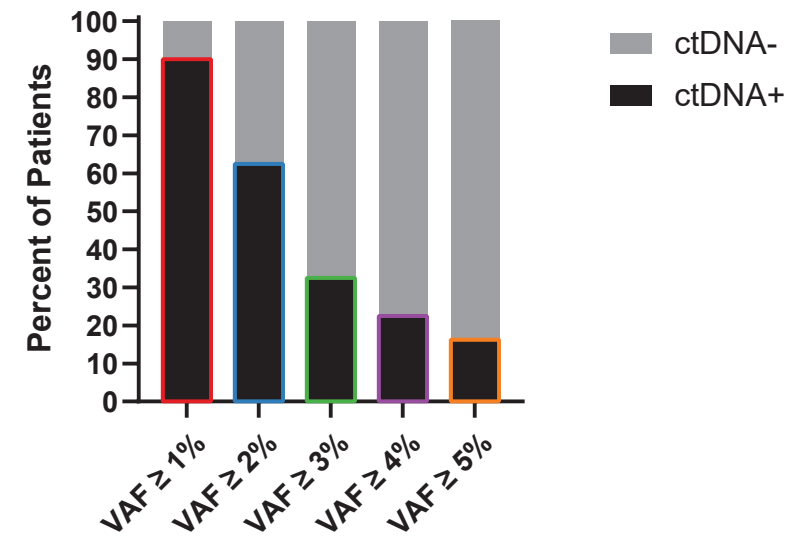


¹EOT blood sample collection was optional (patient decision) during the initial years of the PROTECT registry. Protocol was amended in 2016 for EOT sample collection to be a standard part of PROTECT biospecimen collections.

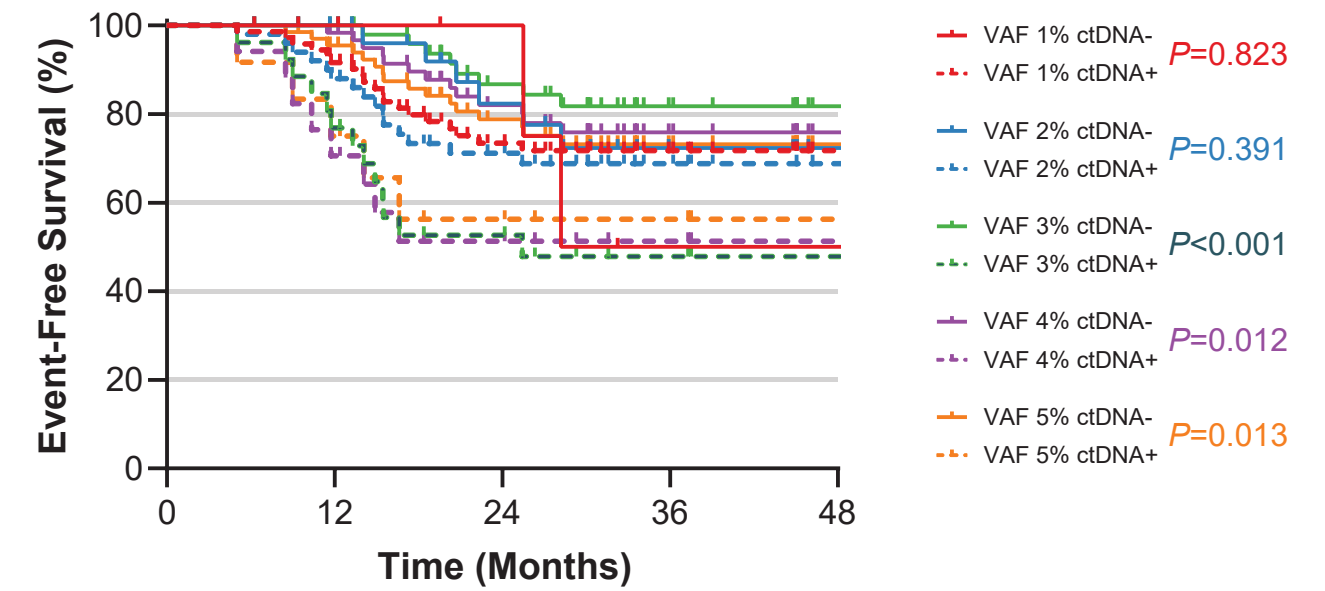
Abbreviations: TNBC, triple-negative breast cancer; NST, neoadjuvant systemic therapy; EOT, end-of-treatment; ctDNA, cell-free circulating tumor DNA.

b

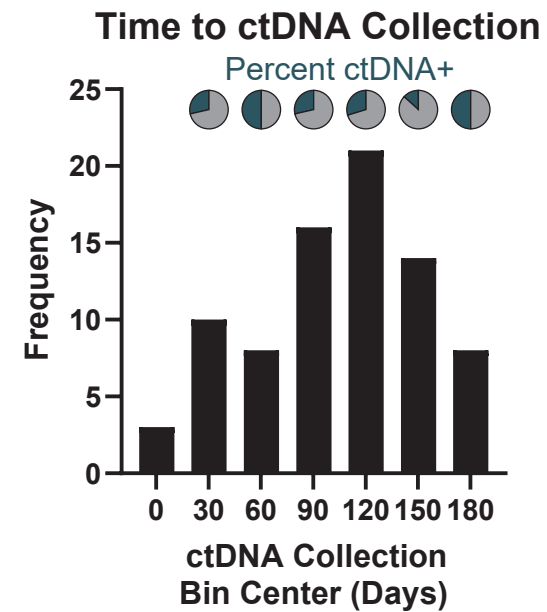
ctDNA Positivity by VAF Threshold



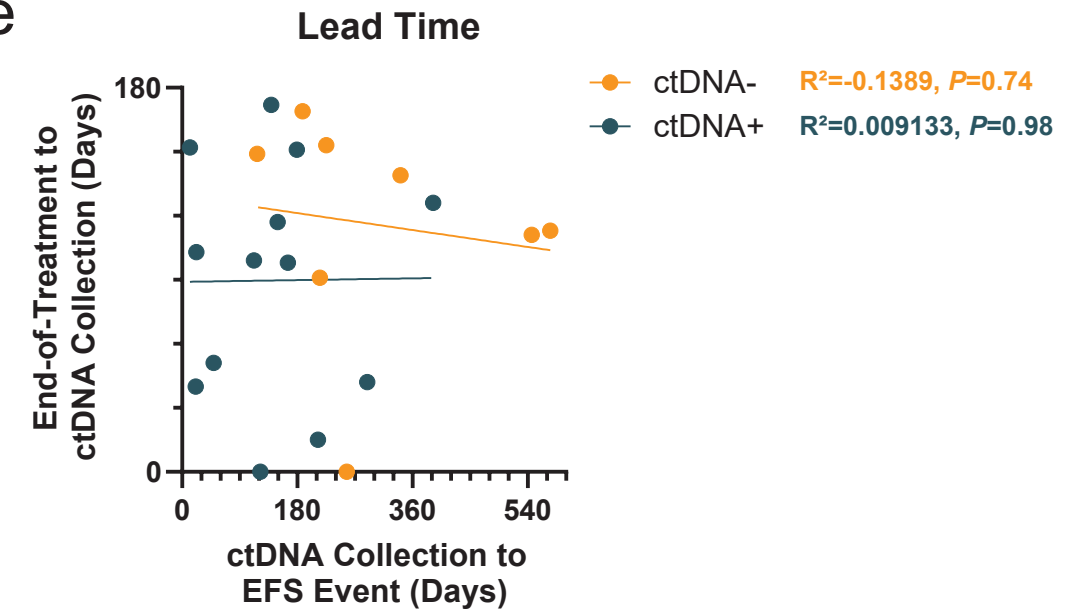
c



d



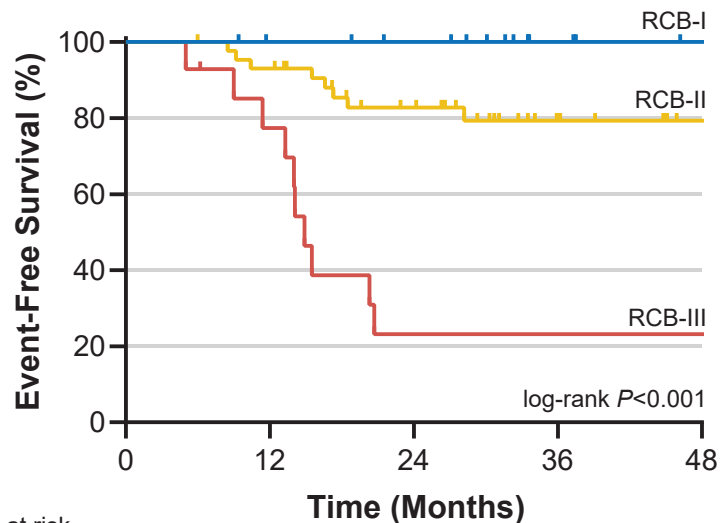
e



(a) REMARK diagram. (b) ctDNA positivity rates by VAF thresholds ranging from 1-5%. (c) Comparison of EFS by ctDNA status using VAF thresholds of 1-5%. *P* value is log-rank. (d) Histogram showing temporal distribution of end-of-treatment ctDNA collection. Pie charts show the percent of patients within that 30-day bin who were found to be ctDNA+. (e) Association between end-of-treatment to ctDNA assessment interval and ctDNA assessment to EFS event interval in amongst patients who experienced recurrence. *R*² and *P* reflect Pearson correlation coefficient and significance, respectively.

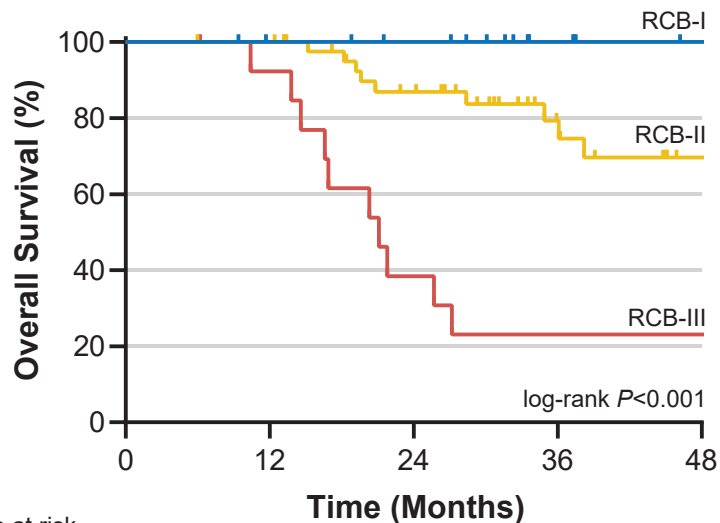
Supplementary Figure 2

a



No. at risk	0	12	24	36	48
RCB-I	21	20	18	10	7
RCB-II	44	41	29	16	10
RCB-III	14	11	4	4	4

b



No. at risk	0	12	24	36	48
RCB-I	21	20	18	10	7
RCB-II	44	44	32	18	10
RCB-III	14	13	6	4	4

(a) EFS among RCB-I, RCB-II, and RCB-III classes. (b) OS among RCB-I, RCB-II, and RCB-III classes. P is log-rank statistic.