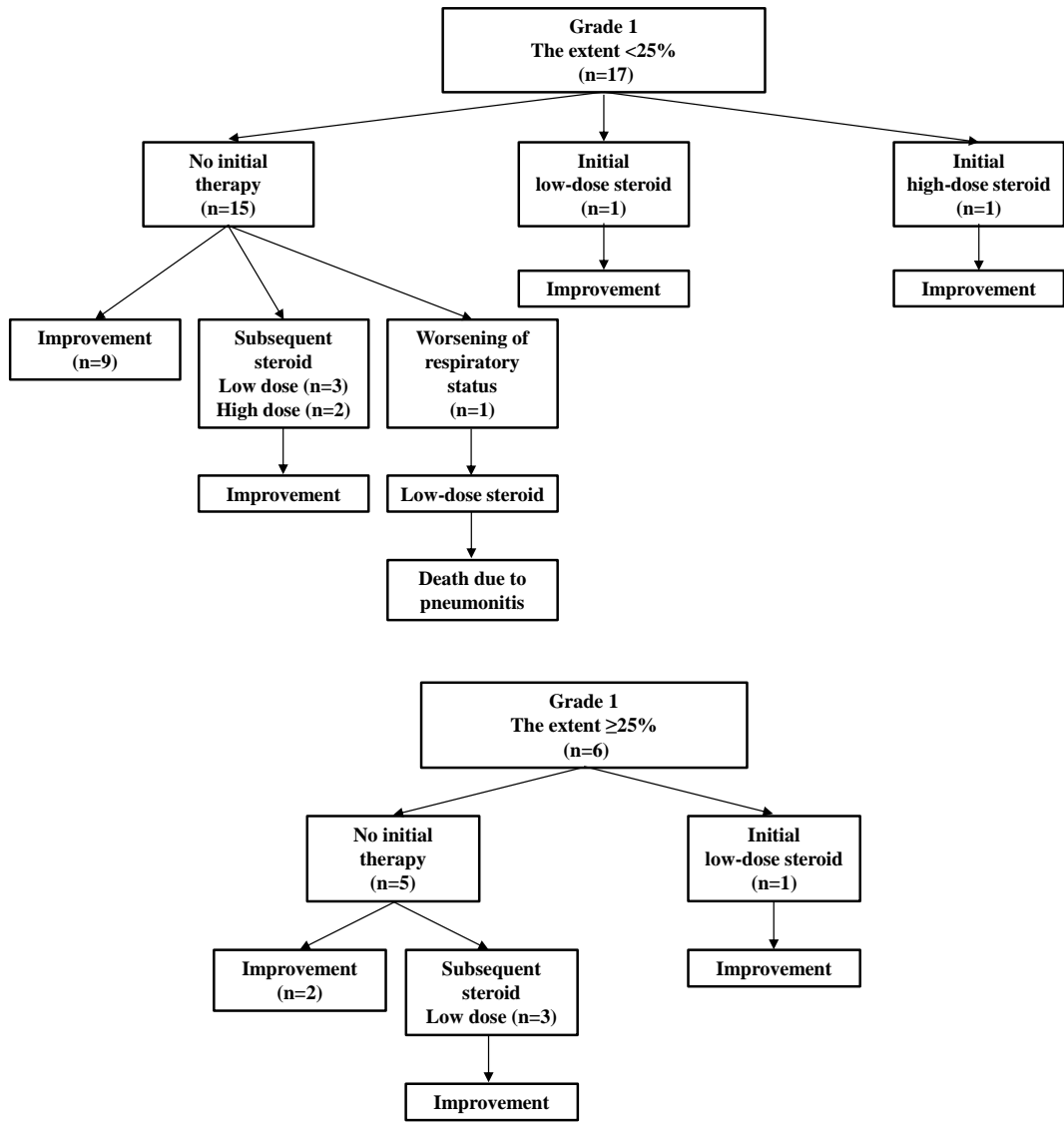
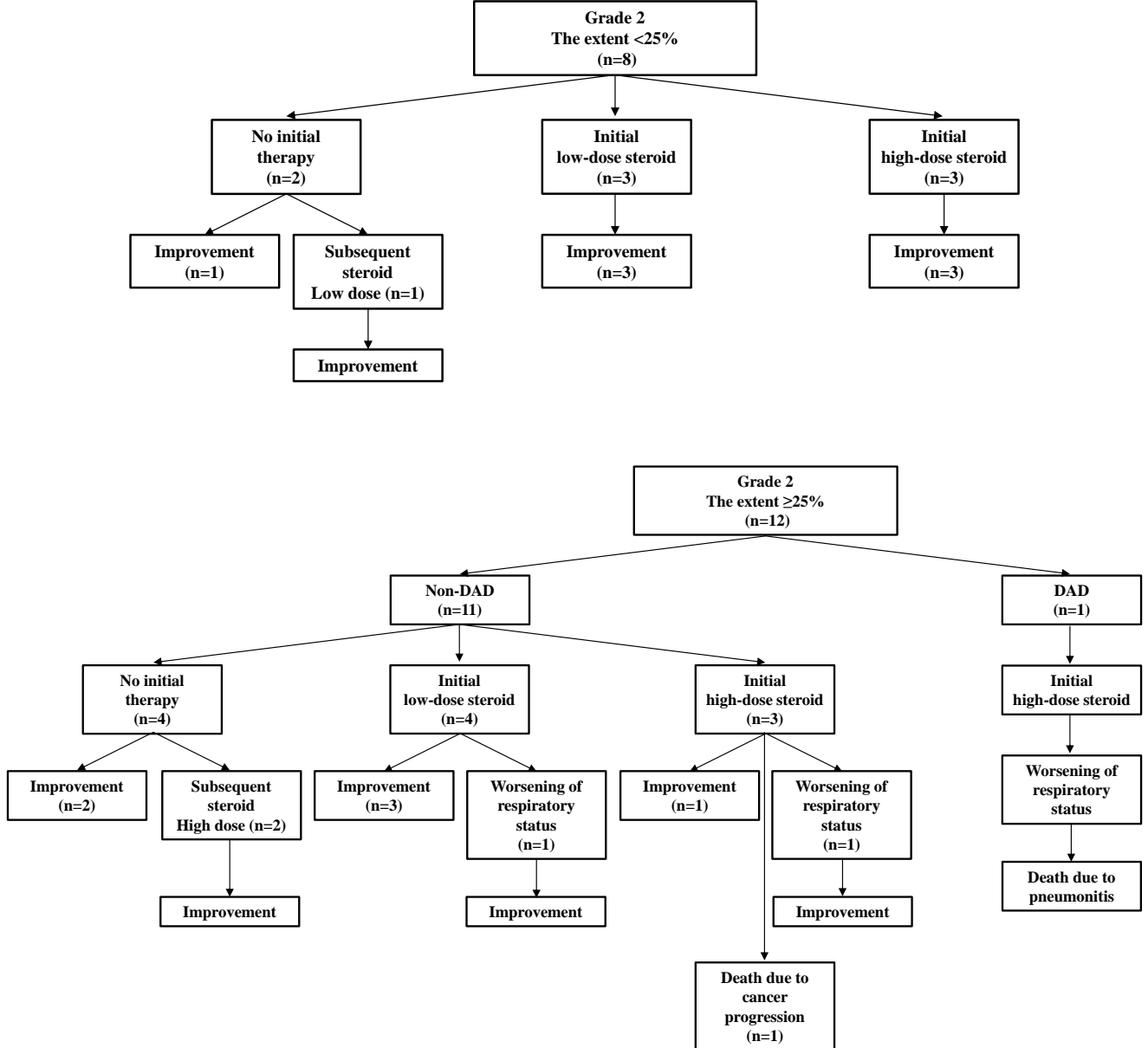


Supplementary Figure S1. Clinical courses of patients who developed grades 1 (a), 2 (b), 3 (c), and 4 (d) pneumonitis at the diagnosis of pneumonitis. These are stratified by the extent of pneumonitis at diagnosis (extent <25% or ≥25%) and the computed tomography image pattern (diffuse alveolar damage [DAD] or non-DAD).

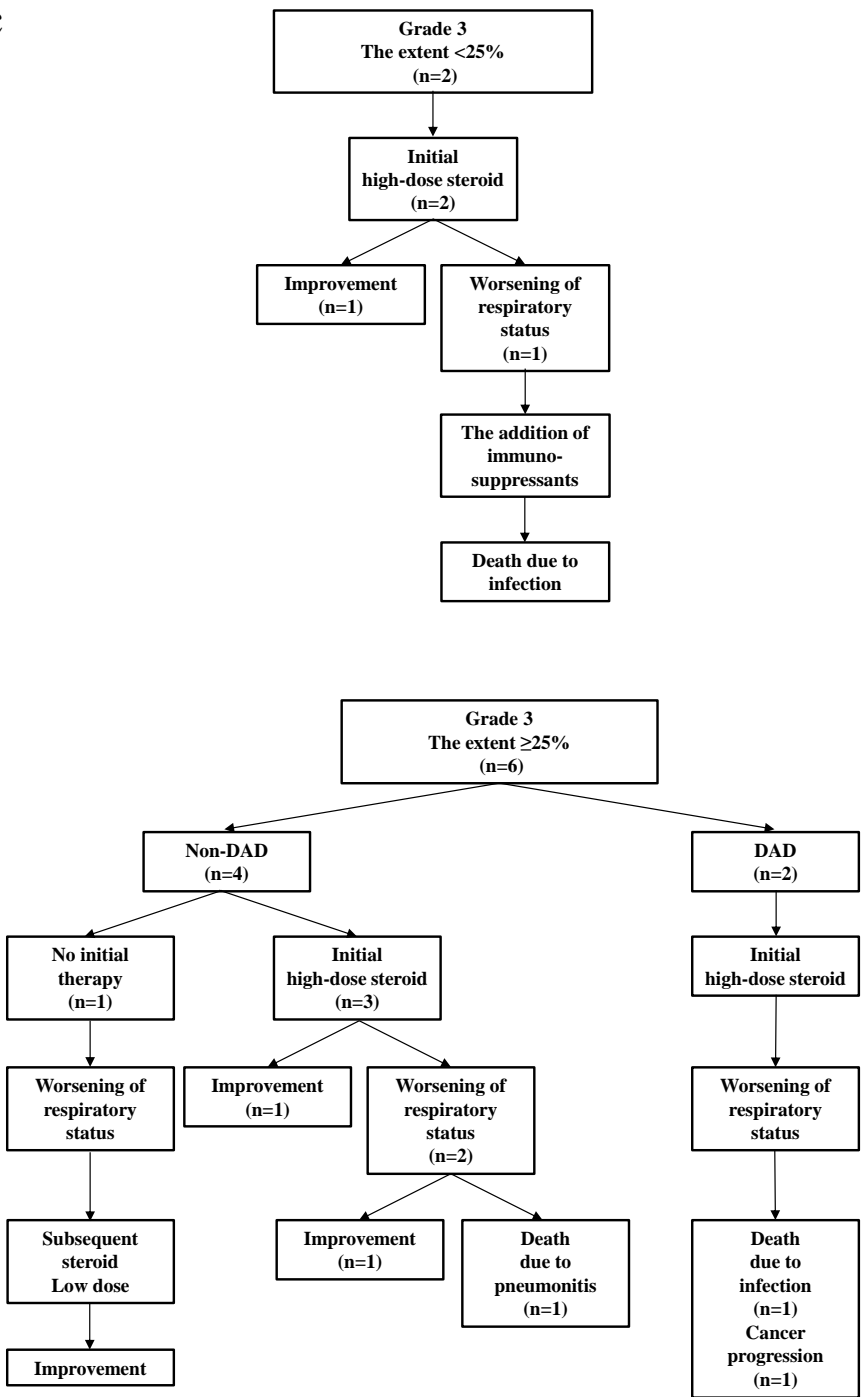
Supplementary Figure S1a.



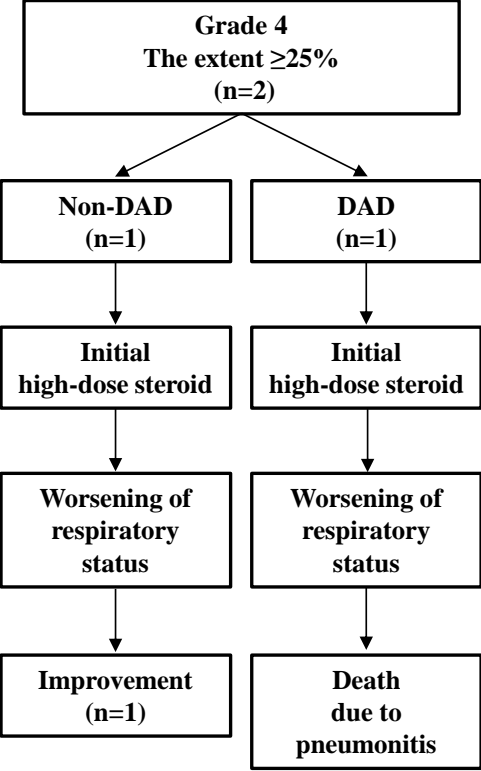
Supplementary Figure S1b



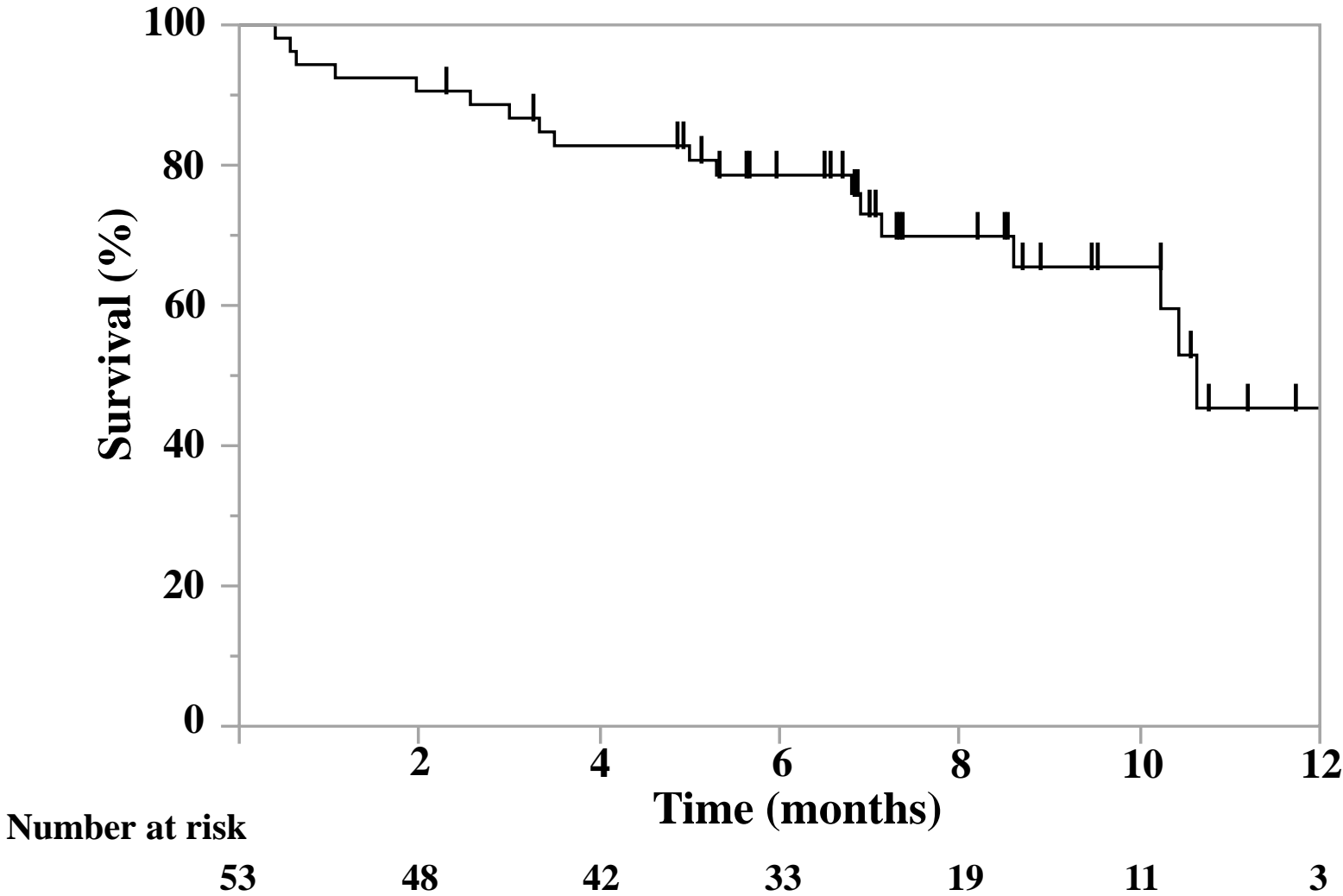
Supplementary Figure S1c



Supplementary Figure S1d

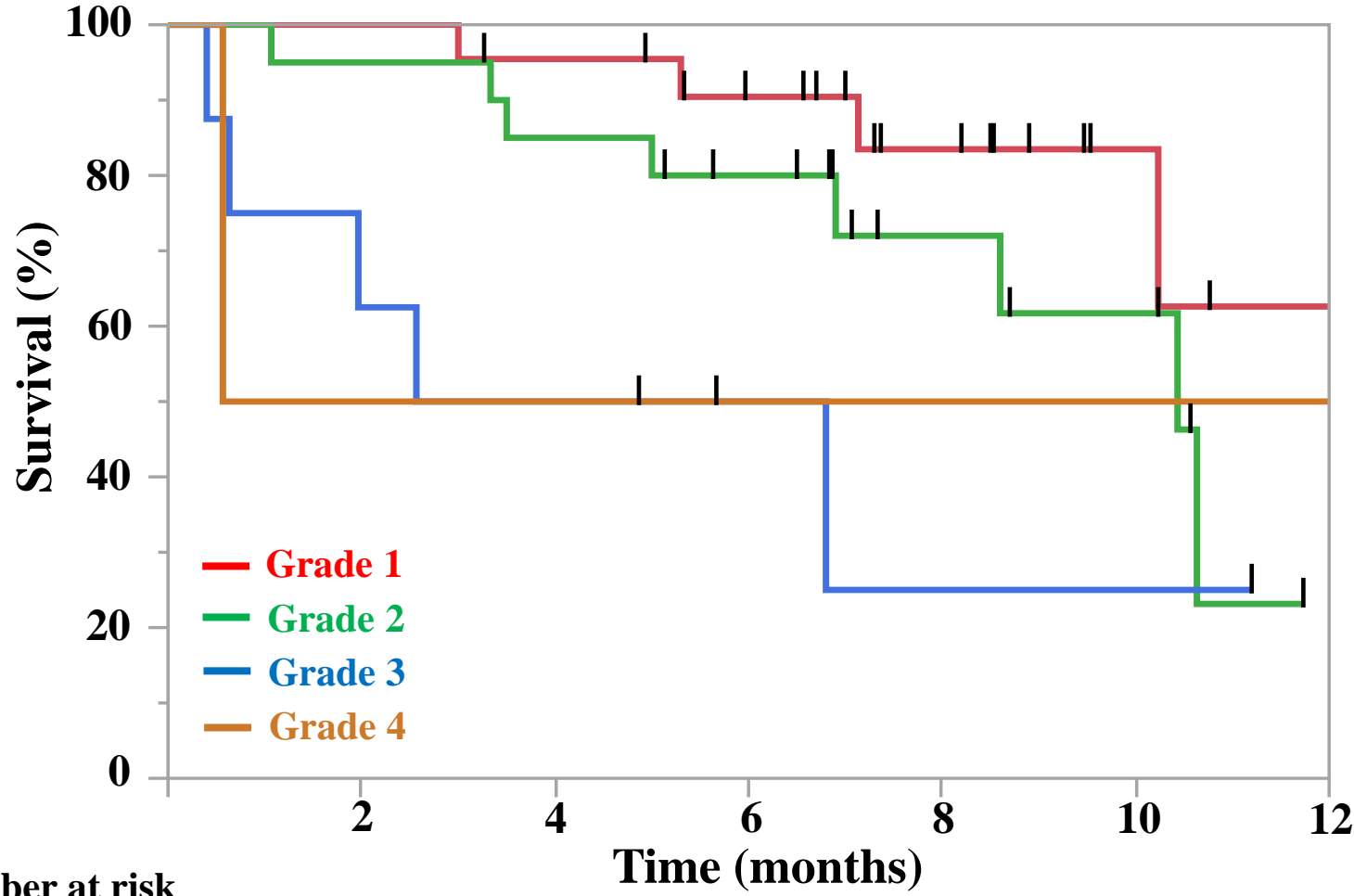


Supplementary Figure S2.
Kaplan–Meier survival curves for survival after the diagnosis of pneumonitis.



Supplementary Figure S3. Kaplan–Meier survival curves of survival stratified by the Common Terminology Criteria for Adverse Events grade of pneumonitis at diagnosis (a), detailed computed tomography image patterns (b), and categories of the extent of pneumonitis (c).

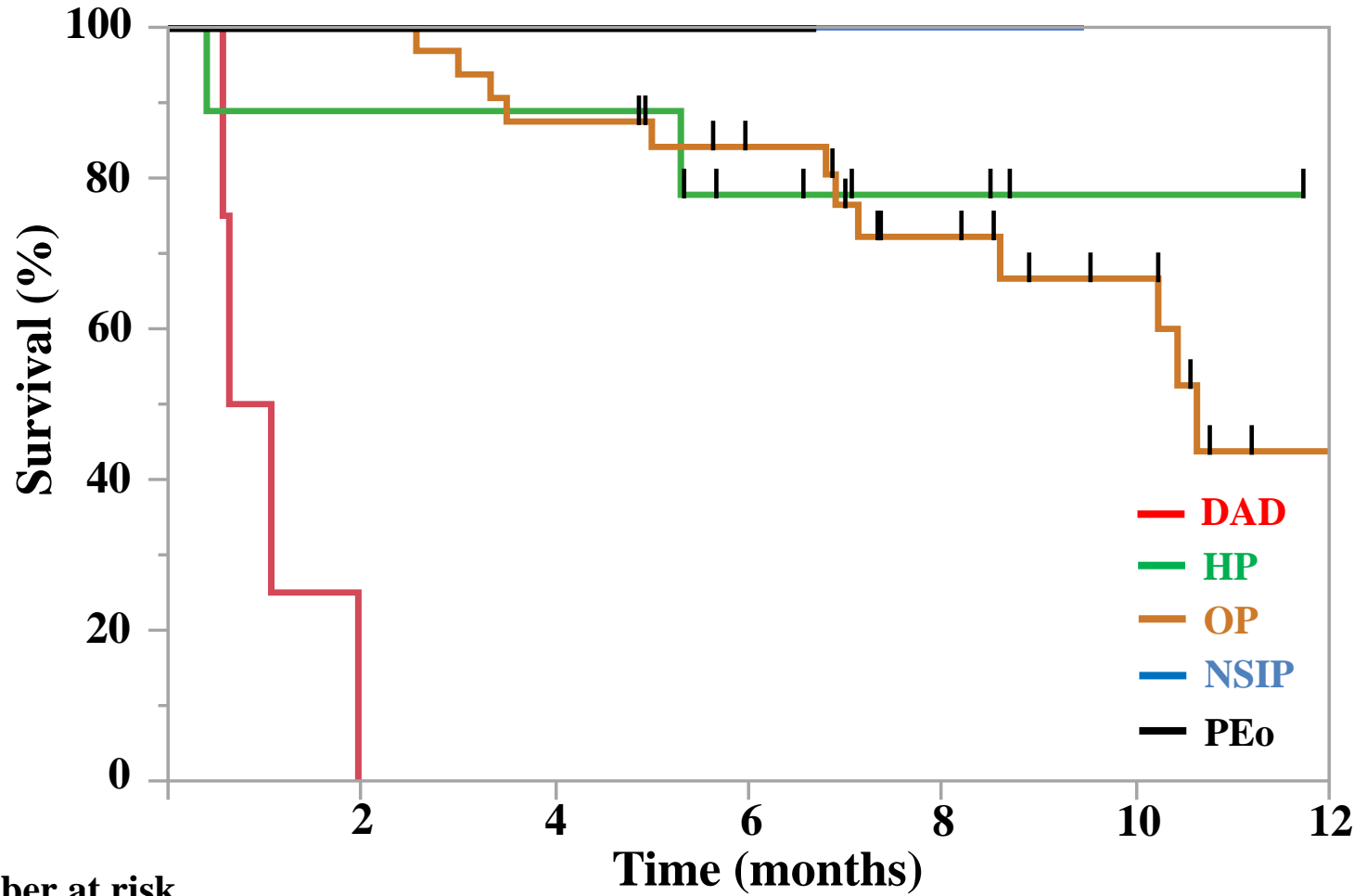
Supplementary Figure S3a.



Number at risk

| | | | | | | | |
|----------------|----|----|----|----|----|---|---|
| Grade 1 | 23 | 23 | 20 | 16 | 10 | 4 | 2 |
| Grade 2 | 20 | 19 | 17 | 14 | 7 | 5 | 0 |
| Grade 3 | 8 | 5 | 4 | 2 | 1 | 1 | 0 |
| Grade 4 | 2 | 1 | 1 | 1 | 1 | 1 | 1 |

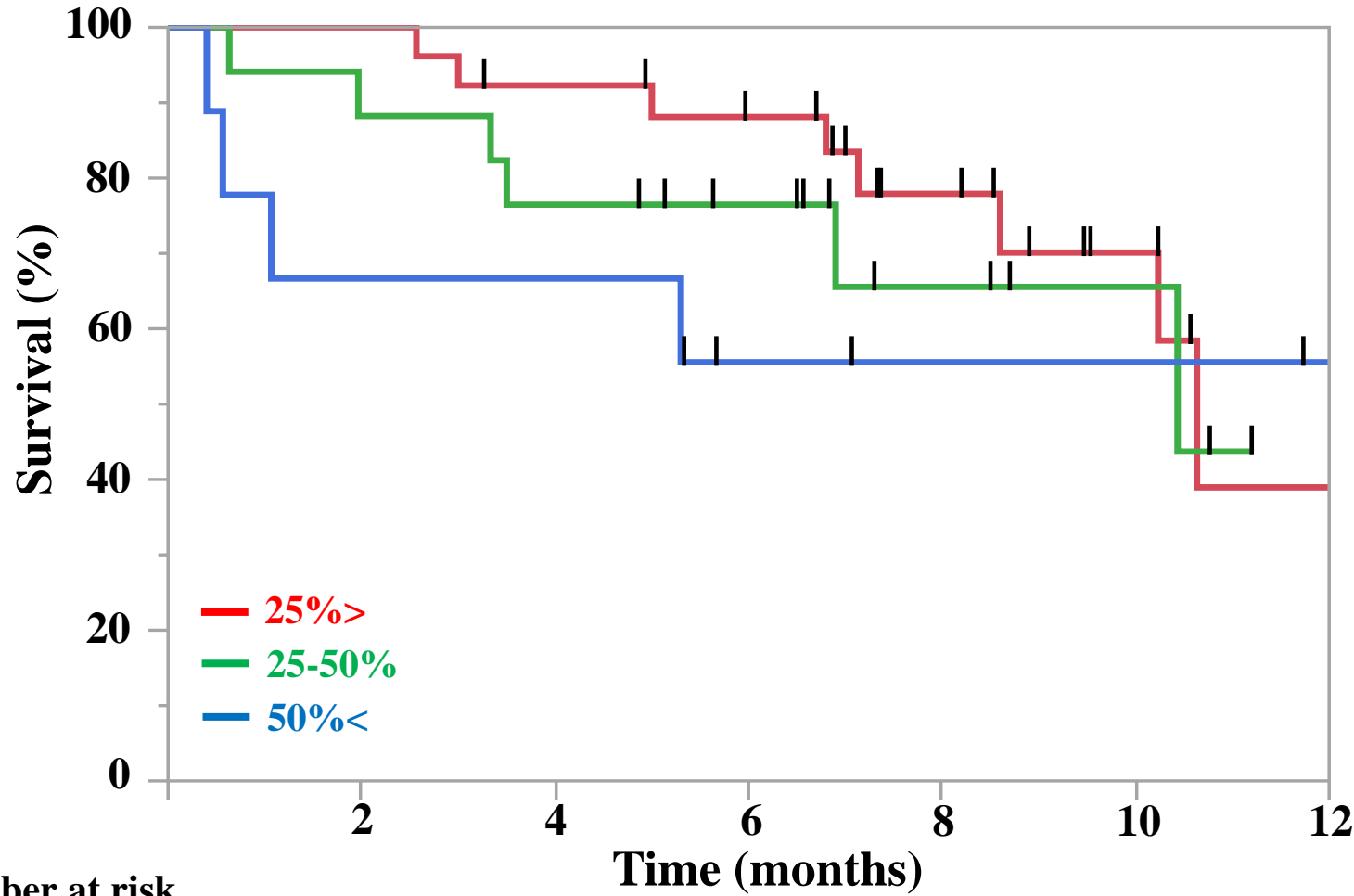
Supplementary Figure 3b



Number at risk

| | | | | | | | |
|-------------|----|----|----|----|----|----|---|
| DAD | 4 | 0 | 0 | 0 | 0 | 0 | 0 |
| HP | 9 | 8 | 8 | 5 | 3 | 1 | 0 |
| OP | 33 | 33 | 28 | 23 | 15 | 10 | 3 |
| NSIP | 5 | 5 | 5 | 4 | 1 | 0 | 0 |
| PEo | 2 | 2 | 1 | 1 | 0 | 0 | 0 |

Supplementary Figure 3c



Number at risk

| | | | | | | | |
|----------------|----|----|----|----|----|---|---|
| 25%> | 27 | 27 | 23 | 20 | 12 | 6 | 2 |
| 25-50% | 17 | 15 | 13 | 10 | 5 | 3 | 0 |
| 50%< | 9 | 6 | 6 | 3 | 2 | 2 | 1 |