

## Supplementary Material

Neurofilament Light Chain in Cerebrospinal Fluid as a Novel Biomarker in Evaluating Both Clinical Severity and Therapeutic Response in Niemann-Pick Disease, Type C1

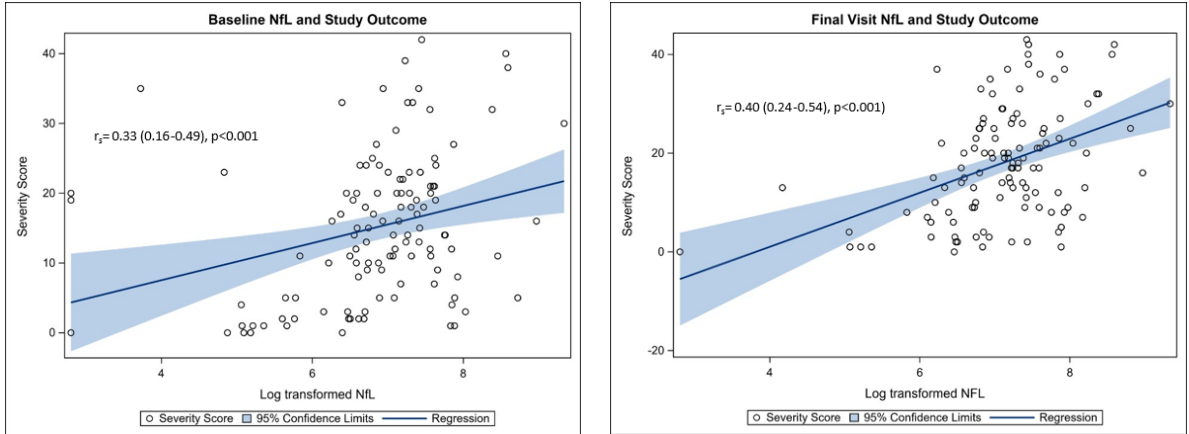
Agrewal et al.

**Supplementary Table 1. NIH and Rush Demographics**

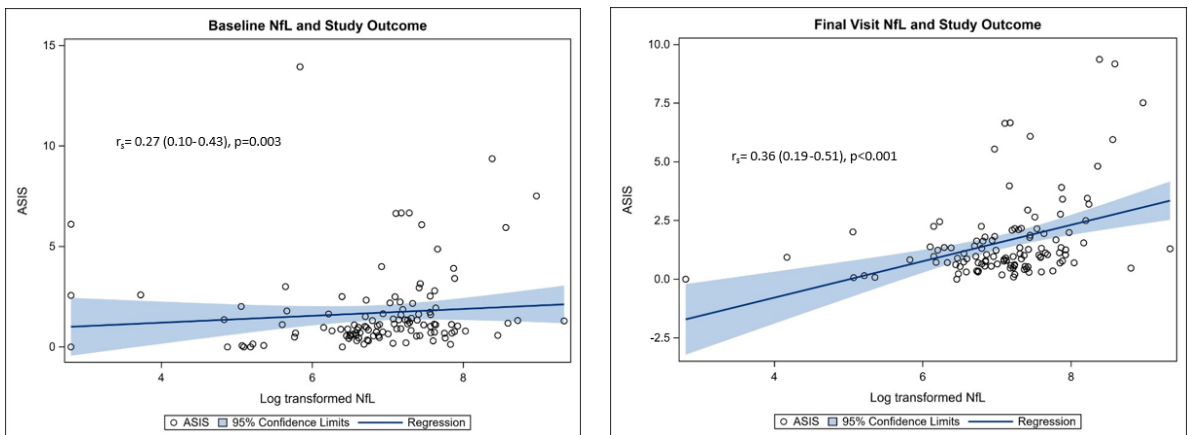
	<i>NIH Cohort (n = 94)</i>	<i>Rush Cohort (n = 21)</i>	<i>p-value</i>
<i>Age in years, Mean ± SD</i>	<i>15 ± 14.6</i>	<i>14.1 ± 15.2</i>	<i>0.81</i>
<i>Males, n (%)</i>	<i>41 (44)</i>	<i>14 (67)</i>	<i>0.09</i>
<i>Duration of neurologic symptoms in years, Mean ± SD</i>	<i>7.2 ± 7.2</i>	<i>7.0 ± 6.4</i>	<i>0.92</i>
<i>Total NIH Severity Score, Mean ±SD</i>	<i>15 ± 11</i>	<i>16 ± 11</i>	<i>0.62</i>
<i>On miglustat, n (%)</i>	<i>43 (46)</i>	<i>9 (43)</i>	<i>0.81</i>
<i>On adrabetadex, n (%)</i>	<i>3 (3)</i>	<i>0 (0)</i>	<i>1.0</i>

**Supplementary Figure 1: Correlation between NFL levels and various outcome measurements at baseline visit and last visit.** A. NPC Neurological Severity Score. B. ASIS. C. Five-Domain Score. D. Ambulation. E. Fine Motor. F. Speech. G. Swallowing. H. Cognition. I. Eye Movement. J. Hearing. K. Memory. L. ASHA-NOMS. M. PAS. For completeness of this figure, graphs from figure 2 are duplicated here.

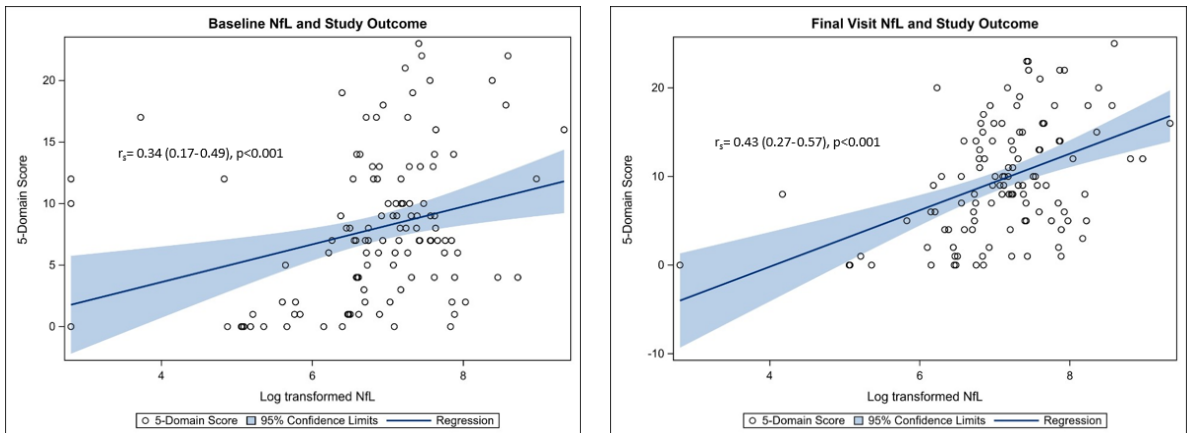
**A**



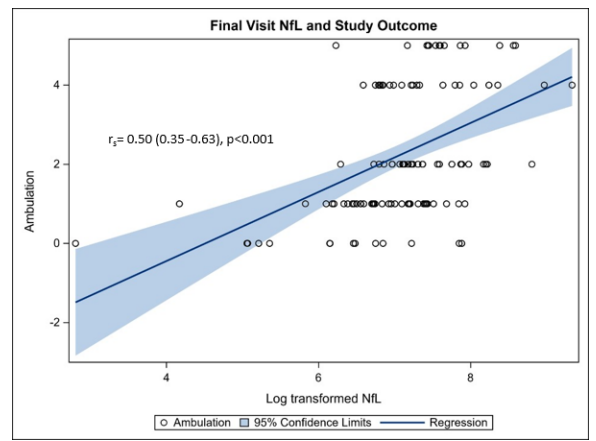
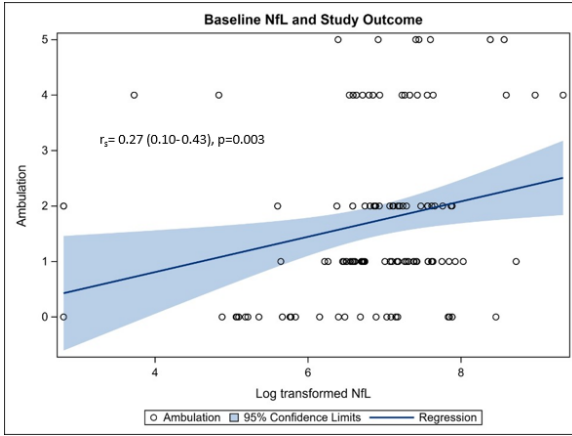
**B**



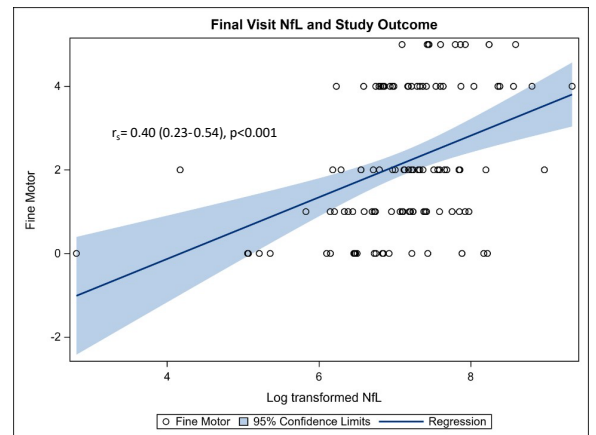
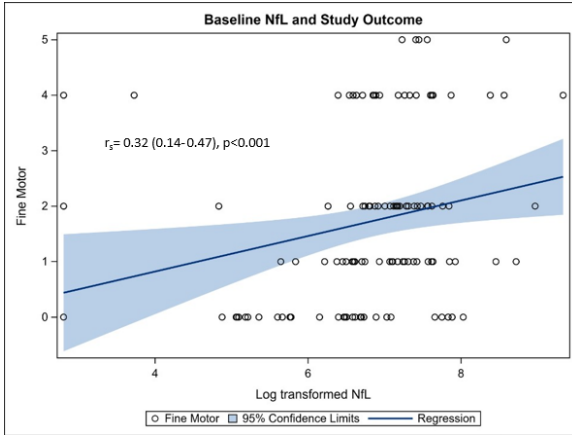
**C**



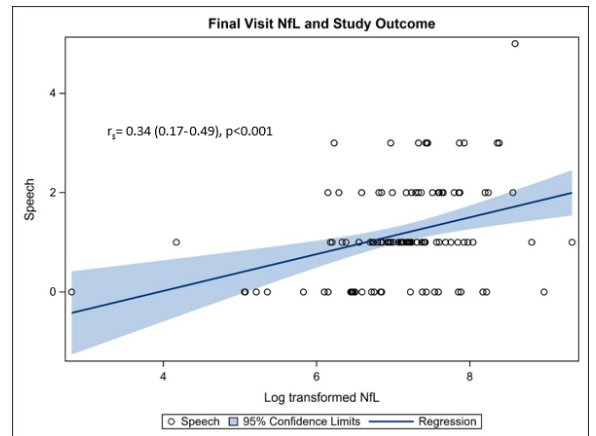
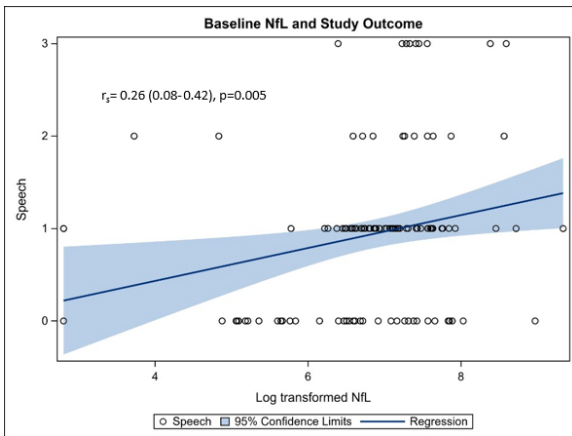
D



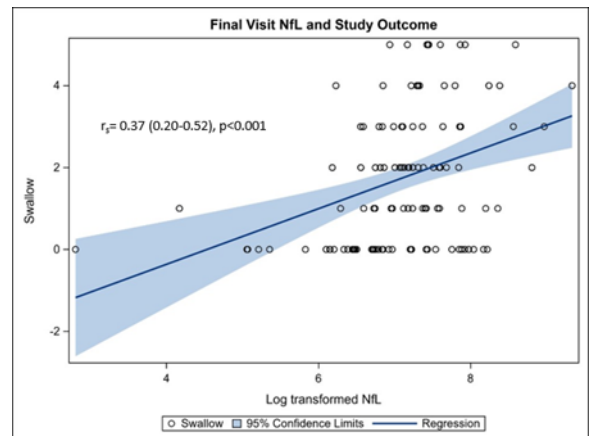
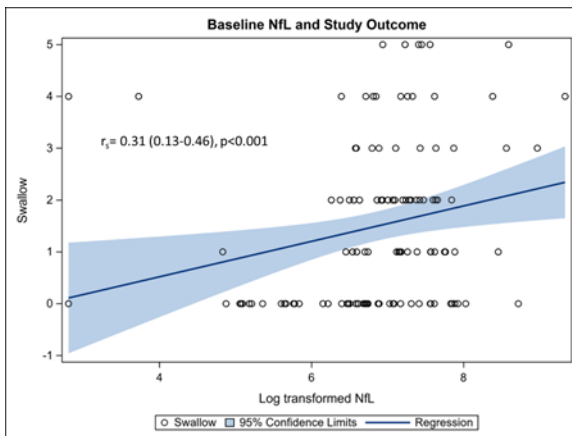
E

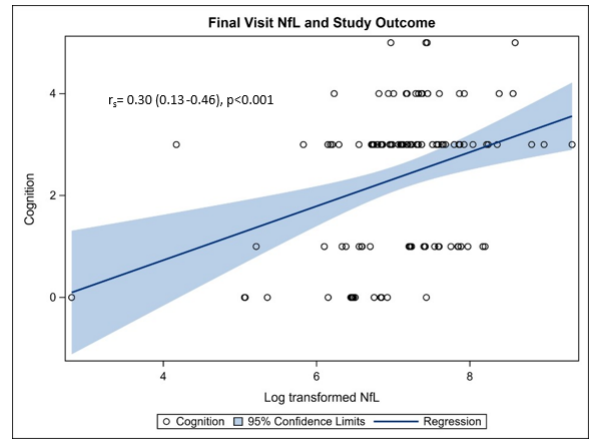
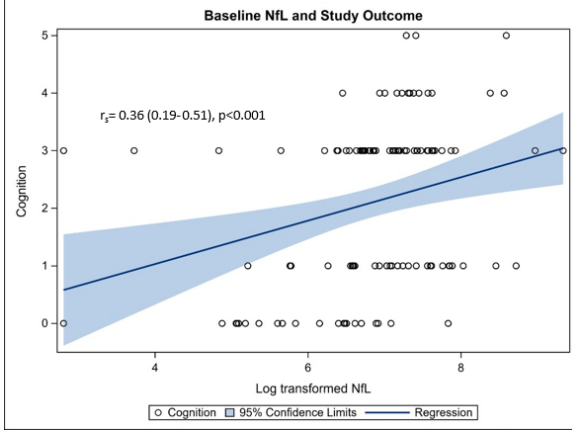
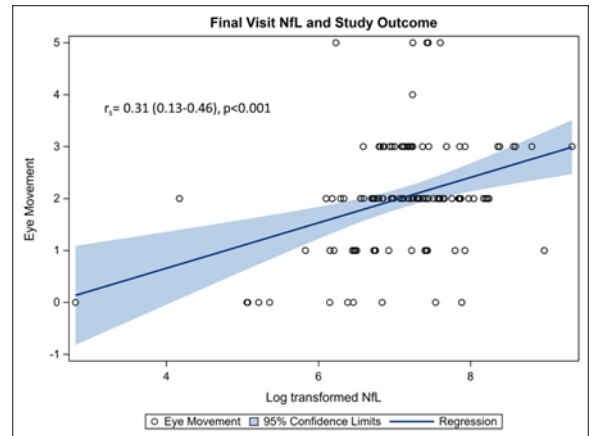
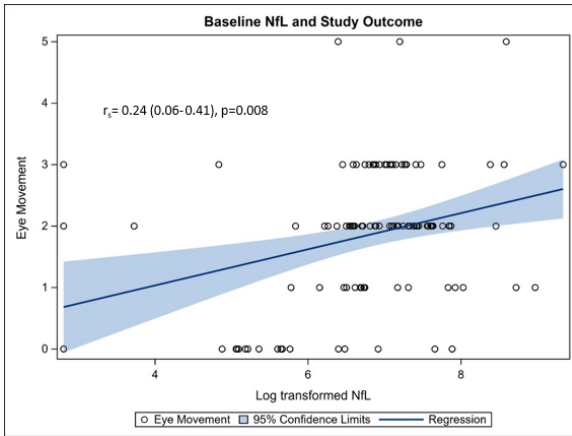
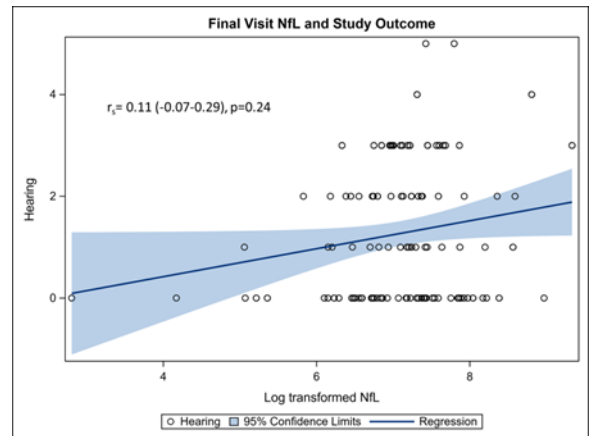
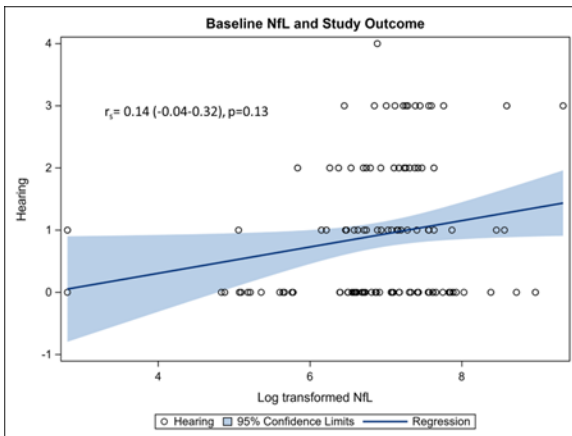
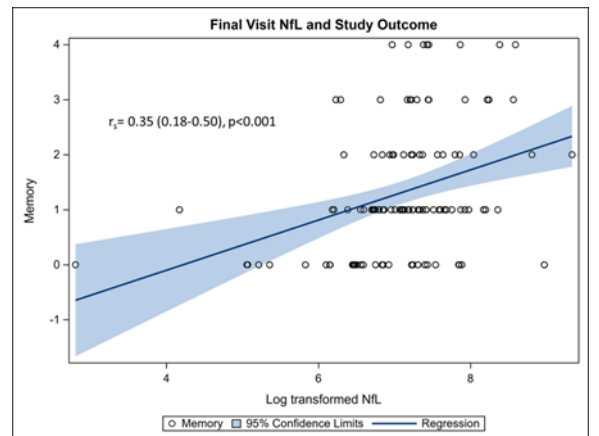
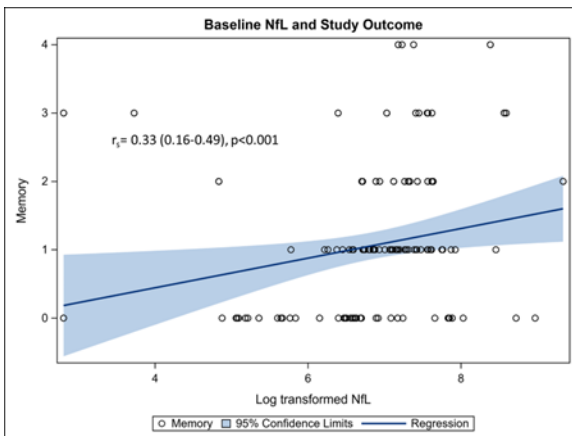


F

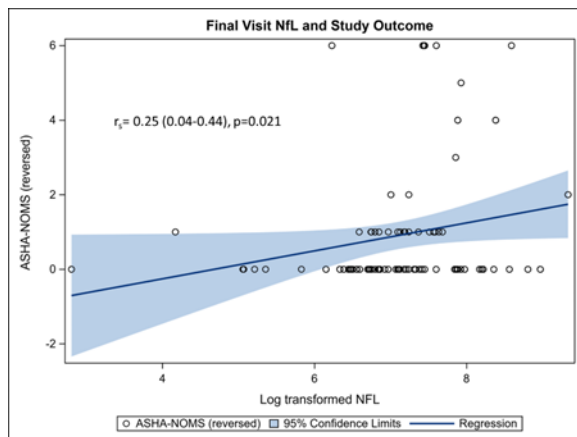
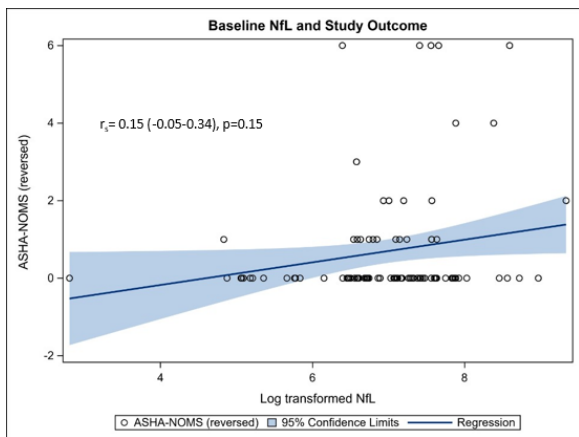


G

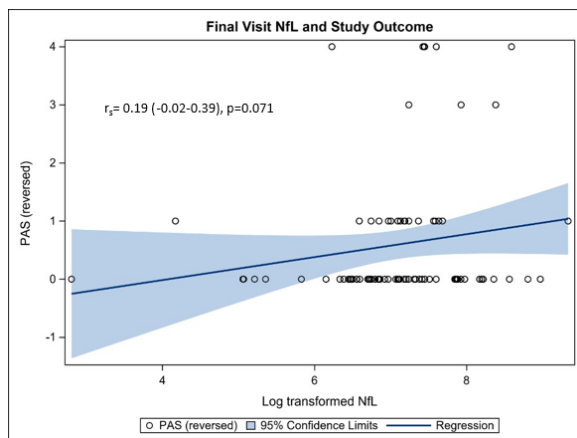
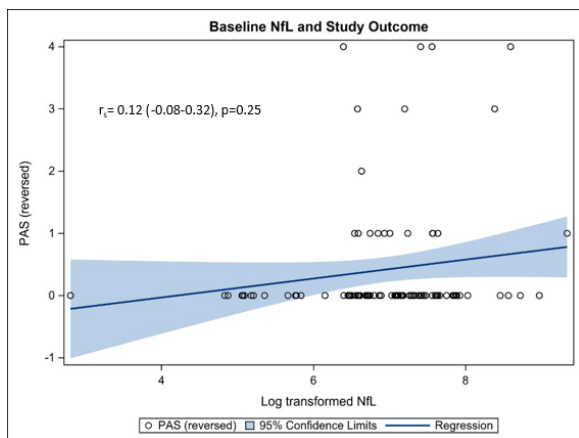


**H****I****J****K**

L

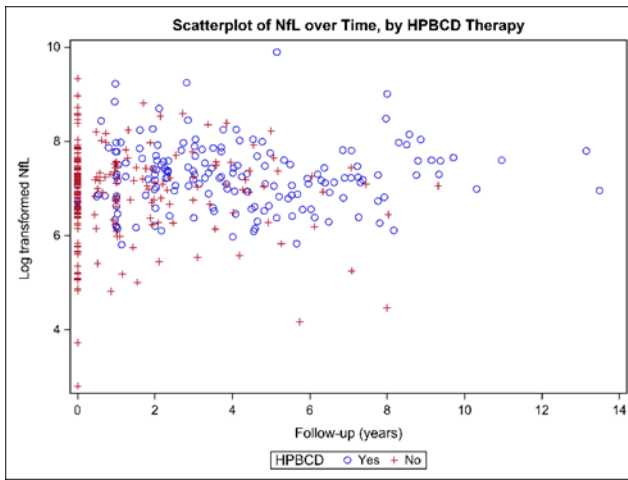


M



**Supplementary Figure 2: Covariate effects of treatments on various NPC outcome measurements.** Results are from final reduced models of NfL and outcome measurements; where an association was not observed between the covariate and outcome, results from the full model are shown. A: Decreased CSF NfL levels were not observed in individuals being treated with adrabetadex. B: HP $\beta$ CD therapy as a forest plot and table.

A



B

