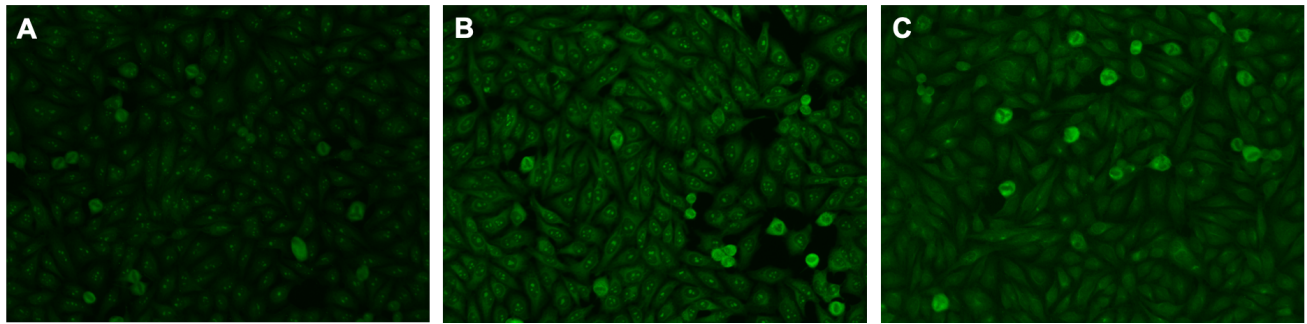
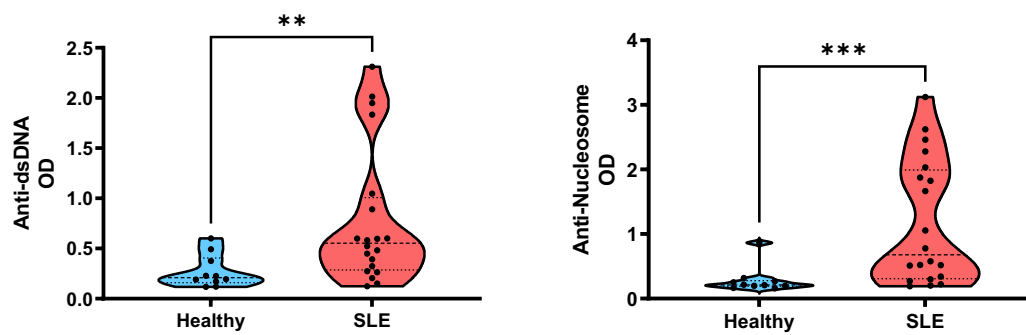


## *Supplementary Material*



**Supplementary Figure 1. Examples of IgA ANAs patterns contained in the saliva of SLE patients.** Hep-2 indirect immunofluorescences employing an anti IgA as detection antibody. A. Nuclear-nucleolar, B. Nuclear-nucleolar and cytoplasmic. C. Cytoplasmic and polar/Golgi-like. 40x in all fields.



**Supplementary Figure 2. Levels of serum IgA anti-dsDNA and serum IgA anti-nucleosome in patients with SLE.** A. Serum IgA anti-dsDNA in healthy individuals and SLE patients. B. Serum IgA anti-nucleosome in healthy individuals and SLE patients. Data were assessed from n= 20 SLE patients and n=10 healthy individuals by Mann-Whitney U tests. \*\*p<0.01, \*\*\*p<0.001.

**Supplementary Table 1. Sensitivity/specificity values for salivary IgA subtypes and commonly used diagnostic markers in SLE.**

<b>Marker</b>	<b>AUC</b>	<b>Sensitivity at 95% specificity</b>	<b>Reference</b>
Salivary IgA1	0.855	59.46%	This work
Salivary IgA2	0.761	26.32%	This work
Serum anti-dsDNA	0.800	41.20%	31
Serum anti-nucleosome	0.704	26.70%	31
C3/C4	0.730/0.720	44.00%	32