

The Inhibitory Effect and Mechanism of Resina Draconis on the Proliferation of MCF-7 Breast Cancer Cells: A Network Pharmacology-Based Analysis

Yana Lv^{1,2†} and Yan Mou^{3†}, Jing Su^{1,2}, Shifang Liu^{1,2}, Xuan Ding^{1,2}, Yin Yuan^{1,2} Ge Li^{1,2*} and Guang Li^{1,2*}

¹ Yunnan Branch of the Institute of Medicinal Plant Development, Chinese Academy of Medical Sciences Jinghong 666100, China

² Yunnan Key Laboratory of Southern Medicinal Utilization, Jinghong 666100, China

³ Yuxi Normal University, Yuxi 653100, China

† These authors contributed equally to this work and share first authorship

* **Correspondence Author:**

lige19800021@163.com

gli@implad.ac.cn

Supplementary Information includes:

1. Supplementary Figures S1(this file)
2. Supplementary Tables S1-S9, provided as separate files:

Contents of Tables S1-S9:

Table S1: Chemical compounds isolated from RD.

Table S2: 378 relevant targets of bioactive compounds.

Table S3: 984 BC-related genes.

Table S4: 148 RD target genes for the treatment of BC.

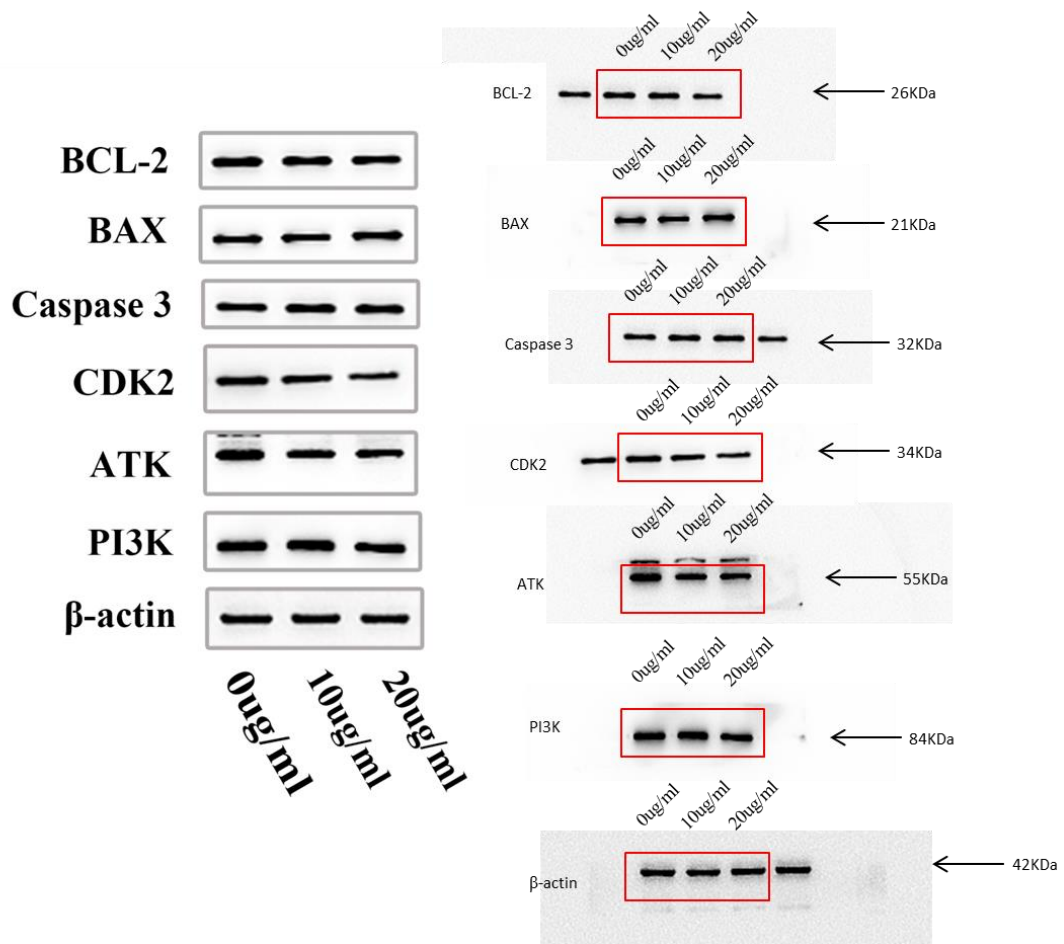
Table S5: 227 Biological processes for RD target genes.

Table S6: 142 KEGG pathways for RD target genes.

Table S7: Component-target-pathway network analysis and evaluation.

Table S8: Binding energy of 10 hub targets and their corresponding 103 active compounds.

Table S9: Sequences of primers for RT-qPCR analyses.



Supplementary FigureS1. Full-length western blots for Figures 13. (Cut the length of NC membrane according to the molecular weight of target protein)