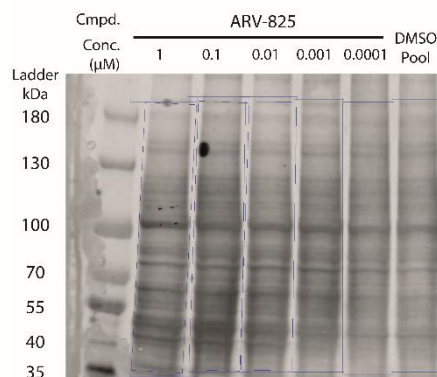
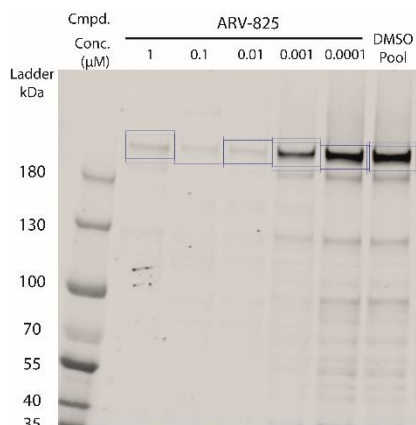


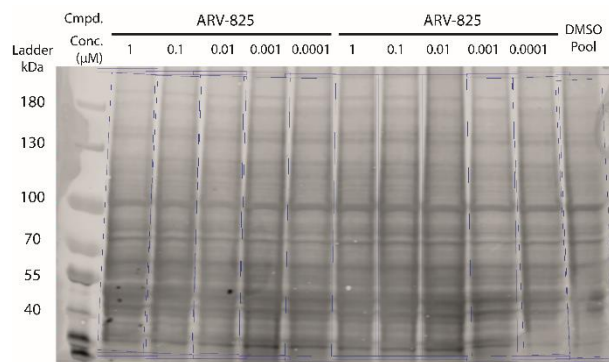
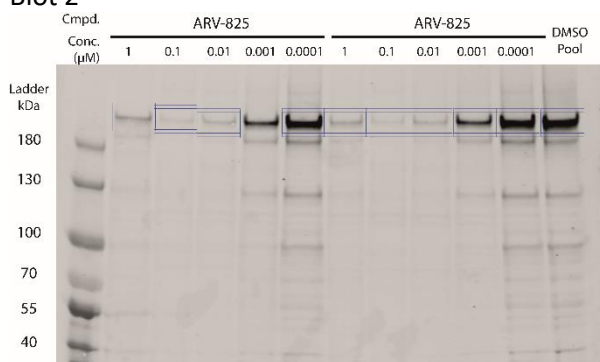
BRD4

Total Protein Stain

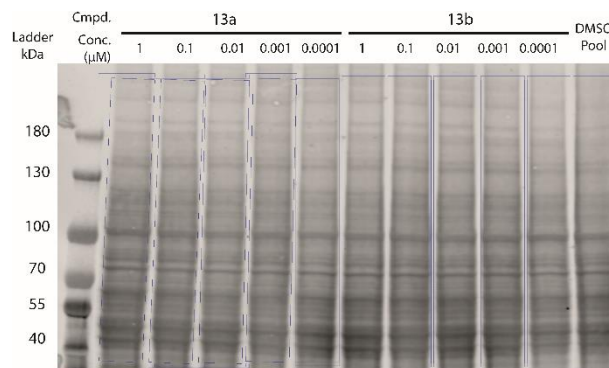
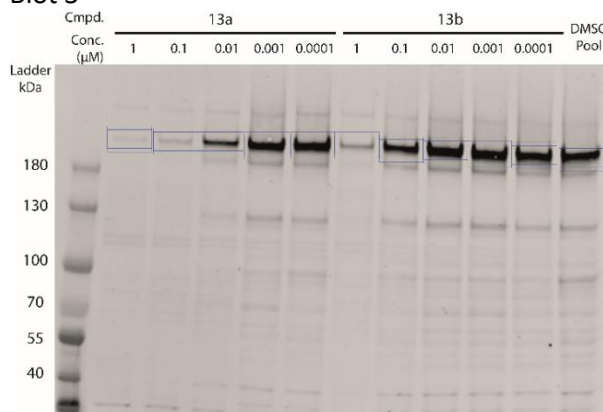
Blot 1



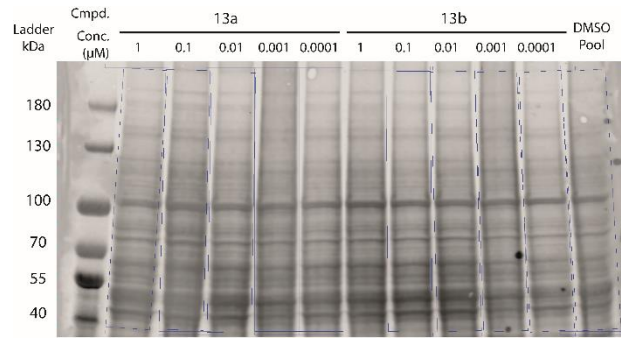
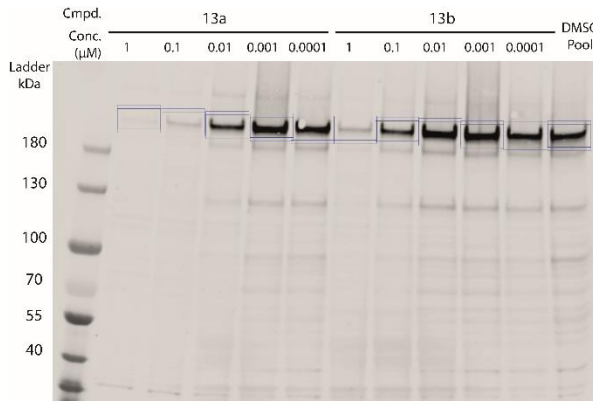
Blot 2



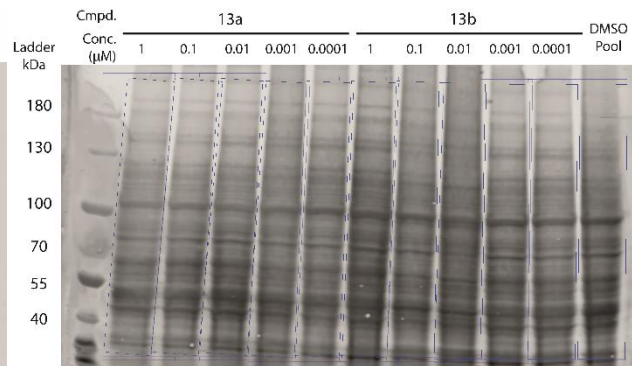
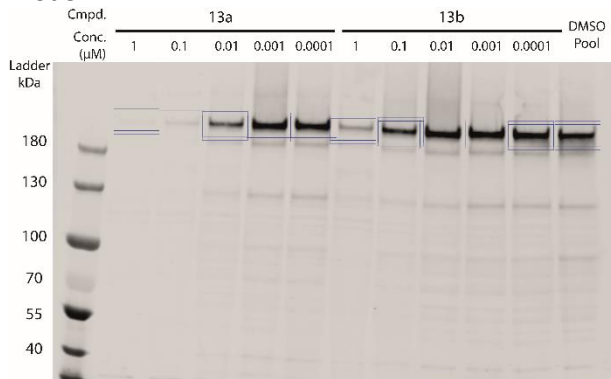
Blot 3



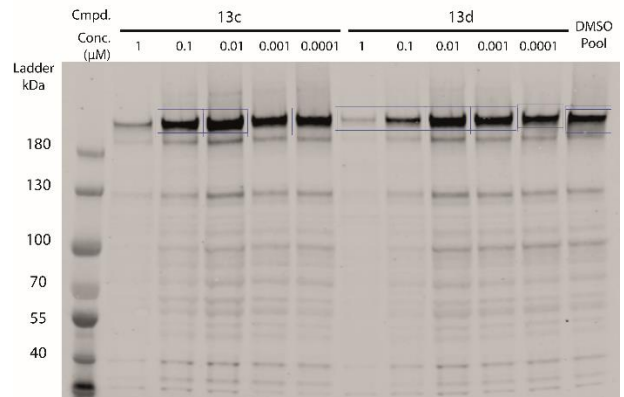
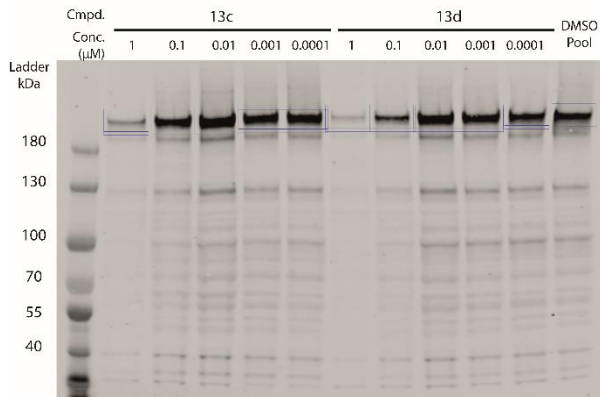
### Blot 4



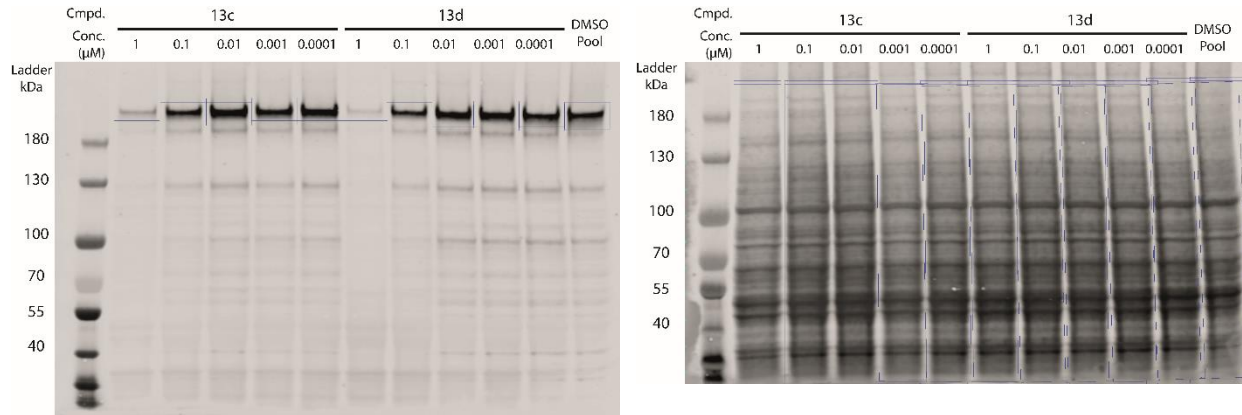
### Blot 5



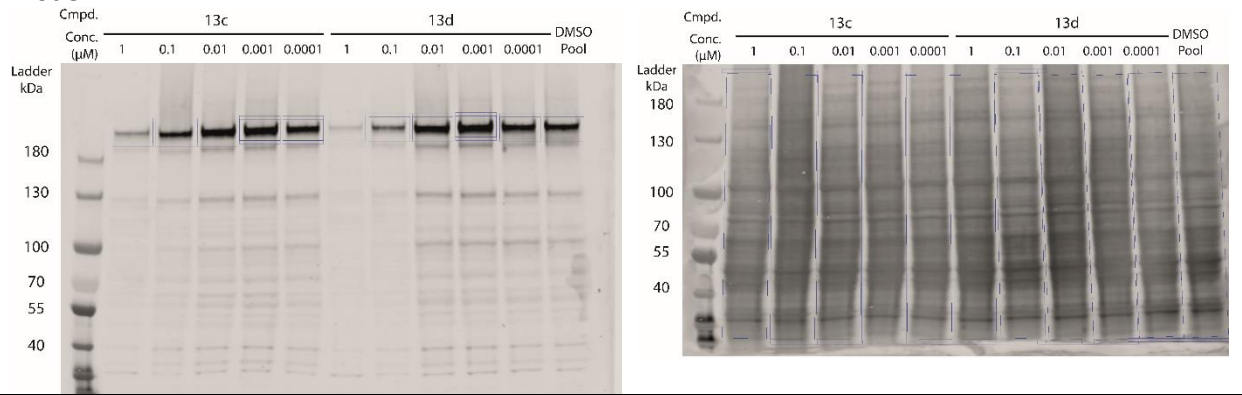
### Blot 6



### Blot 7



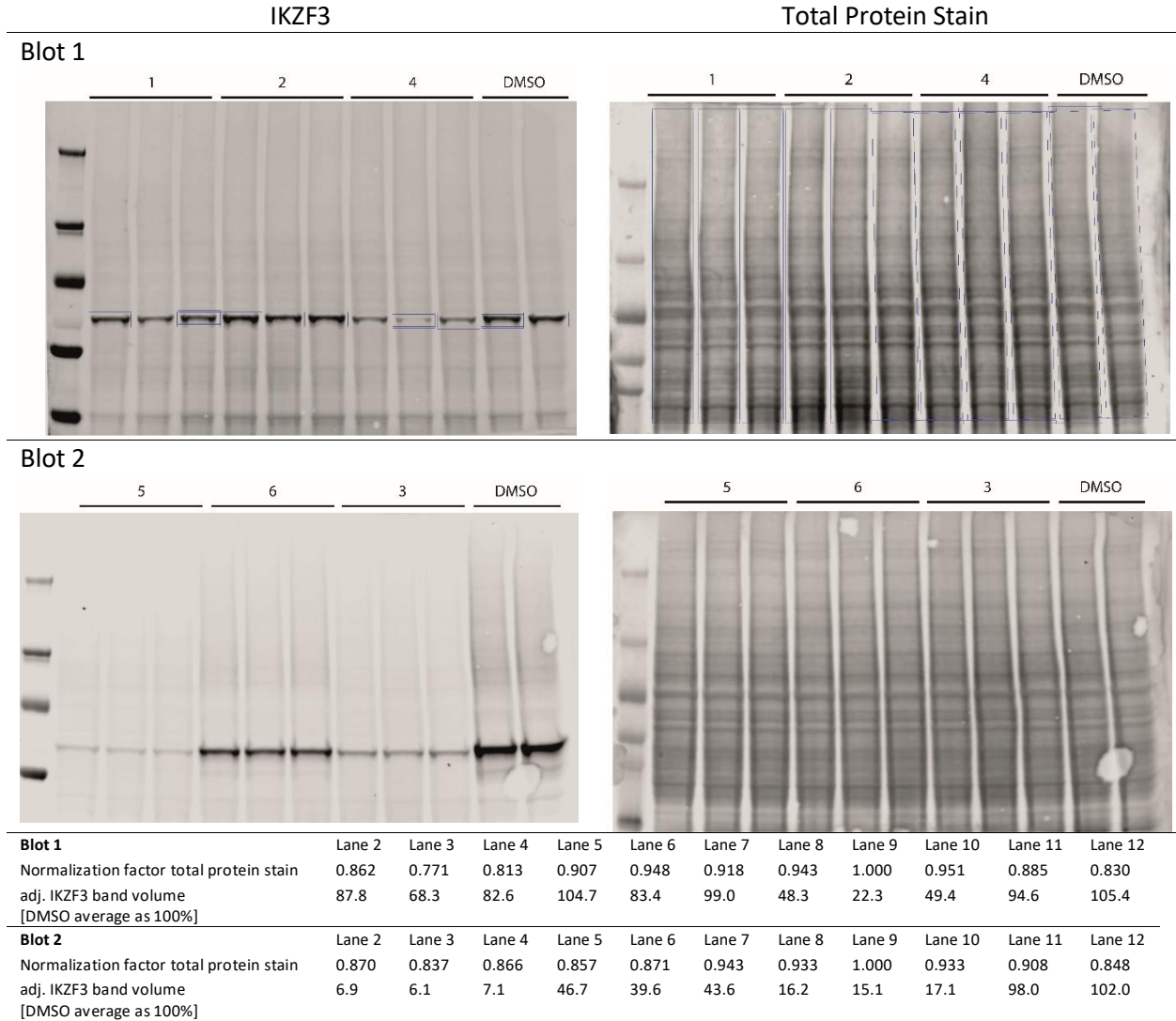
### Blot 8



	Lane 2	Lane 3	Lane 4	Lane 5	Lane 6	Lane 7	Lane 8	Lane 9	Lane 10	Lane 11	Lane 12
<b>Blot 1</b>											
Normalization factor total protein stain	0.876	0.970	0.806	0.811	0.721	0.667					
adj. BRD4 band volume [DMSO as 100%]	3.8	1.4	2.6	28.0	74.8	100.0					
<b>Blot 2</b>											
Normalization factor total protein stain	0.762	0.767	0.730	0.900	0.856	0.823	0.869	1.000	0.801	0.747	0.748
adj. BRD4 band volume [DMSO as 100%]	8.4	1.7	4.0	26.7	81.8	6.3	1.6	3.2	30.3	95.0	100.0
<b>Blot 3</b>											
Normalization factor total protein stain	1.000	0.908	0.840	0.876	0.894	0.972	0.962	0.981	0.913	0.850	0.923
adj. BRD4 band volume [DMSO as 100%]	1.5	4.7	38.0	119.6	138.9	12.0	66.3	144.3	147.3	120.2	100.0
<b>Blot 4</b>											
Normalization factor total protein stain	0.827	0.928	0.904	0.964	0.838	1.000	0.924	0.967	0.952	0.760	0.849
adj. BRD4 band volume [DMSO as 100%]	1.6	6.4	59.5	136.1	123.2	10.9	58.8	149.3	147.7	123.0	100.0
<b>Blot 5</b>											
Normalization factor total protein stain	0.763	0.766	0.865	0.863	0.833	0.995	0.910	1.000	0.889	0.835	0.927
adj. BRD4 band volume [DMSO as 100%]	1.0	4.3	42.8	111.5	120.3	18.5	60.9	112.6	132.5	143.5	100.0
<b>Blot 6</b>											
Normalization factor total protein stain	0.833	0.945	1.000	0.802	0.804	0.835	0.847	0.988	0.771	0.777	0.812
adj. BRD4 band volume [DMSO as 100%]	19.0	97.2	174.0	110.3	129.5	8.0	43.6	120.1	122.8	90.3	100.0
<b>Blot 7</b>											
Normalization factor total protein stain	0.790	0.928	0.967	0.827	0.913	0.938	1.000	0.965	0.975	0.966	0.870
adj. BRD4 band volume [DMSO as 100%]	18.3	77.7	135.6	106.3	137.7	6.5	62.4	113.1	116.4	94.7	100.0
<b>Blot 8</b>											
Normalization factor total protein stain	0.715	0.902	0.812	0.775	0.723	0.874	0.832	1.000	0.858	0.764	0.850
adj. BRD4 band volume [DMSO as 100%]	24.3	60.0	142.8	157.4	112.4	6.9	37.4	102.7	151.4	111.9	100.0

**Figure S6:** Quantification of BRD4 from treated Namalwa cells by western blotting. Right panels show total protein stain images of nitrocellulose-membranes; the same immunoblots stained with BRD4 mAb are depicted in the left panels. Bands were quantified within the indicated boxes. The table shows the

normalization factors and the adjusted (adj.) band volumes for BRD4. The band volume of the DMSO pool sample was set as 100%.



**Figure S7:** Quantification of IKZF3 from treated OPM2 cells by western blotting. Right panels show total protein stain images of nitrocellulose-membranes; the same immunoblots stained with IKZF3 mAb are depicted in the left panels. The table shows the normalization factors and the adjusted (adj.) band volumes for BRD4. The average band volume of the DMSO sample was set as 100%.