

Western blots

Figure 1c

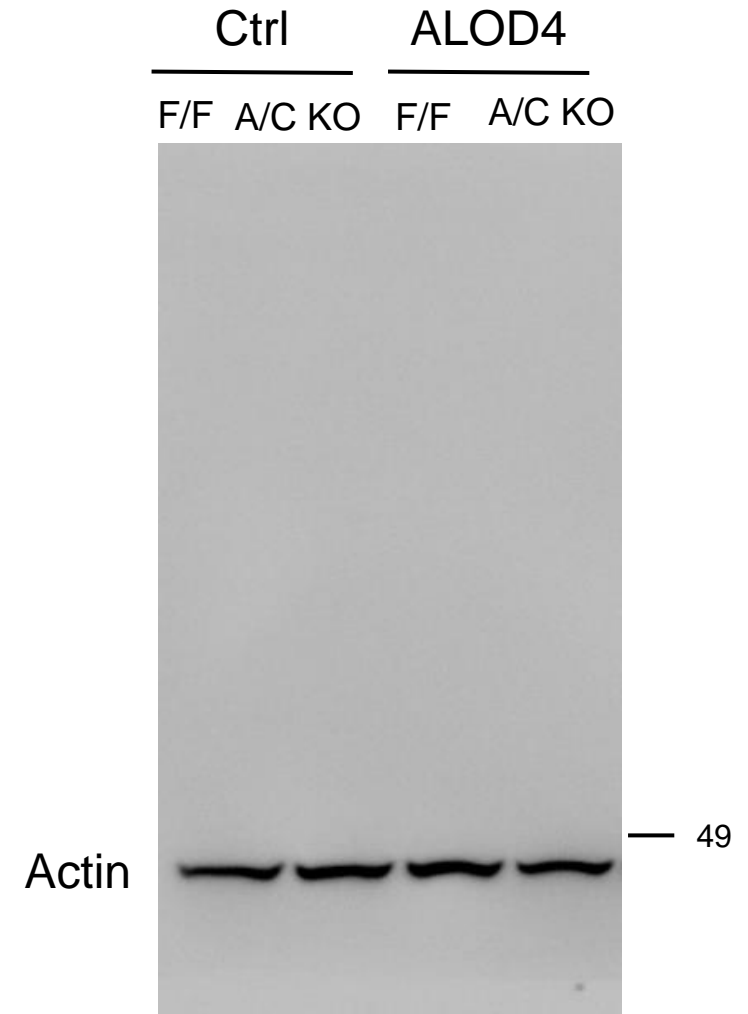
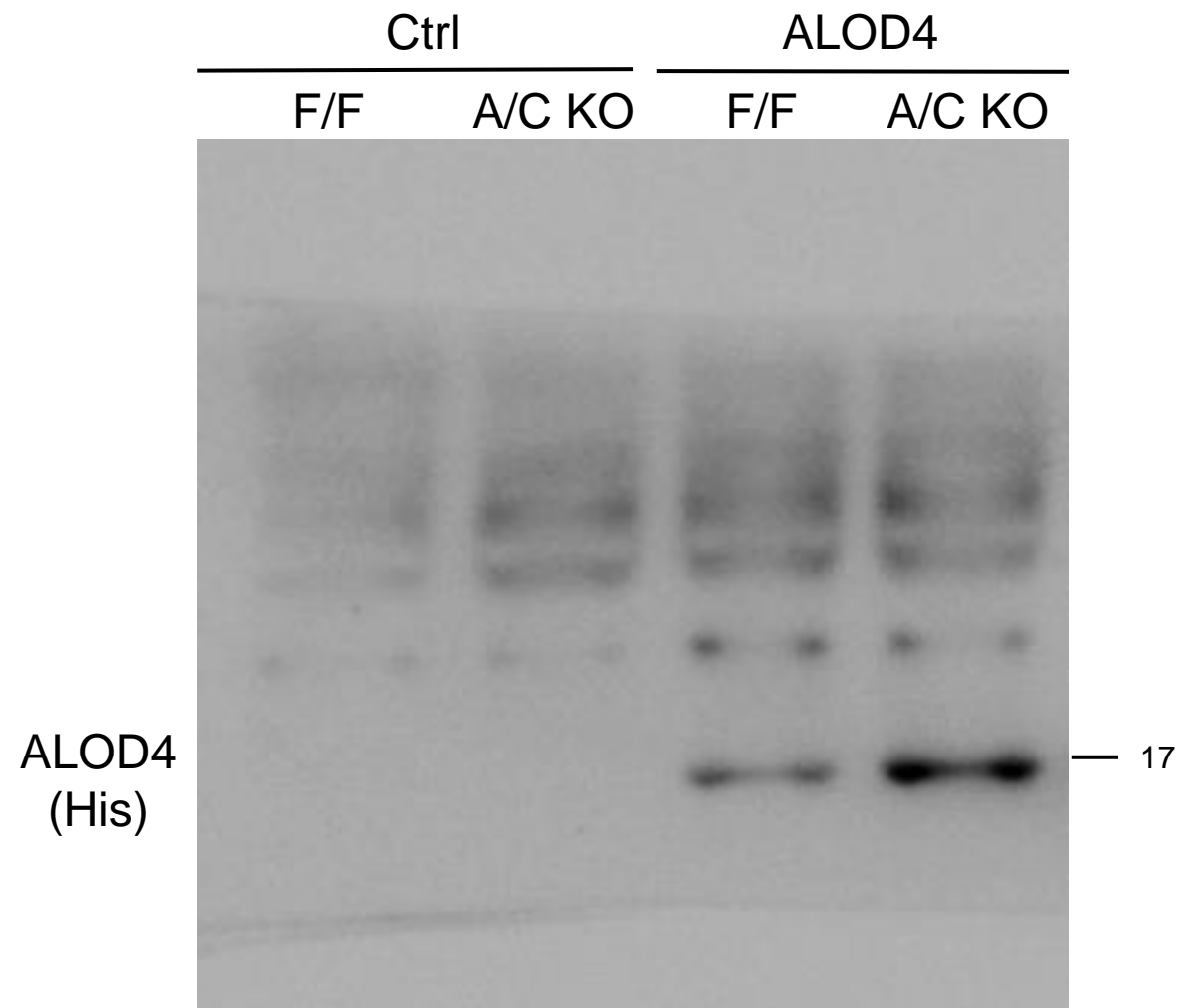


Figure 2e

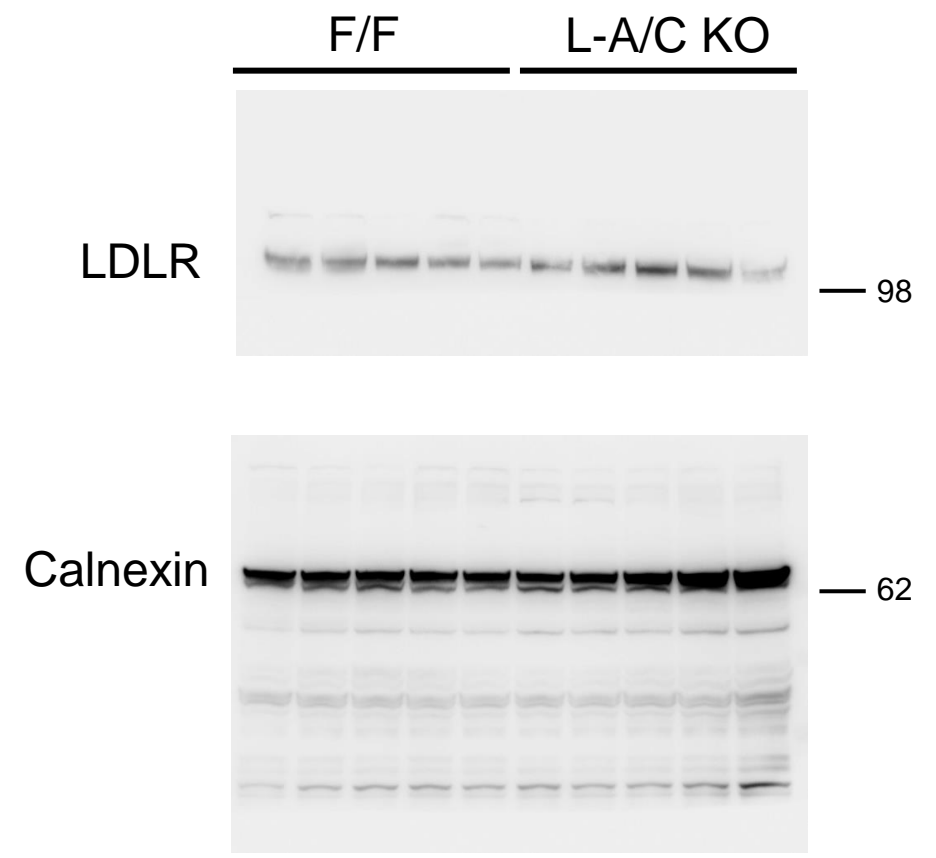
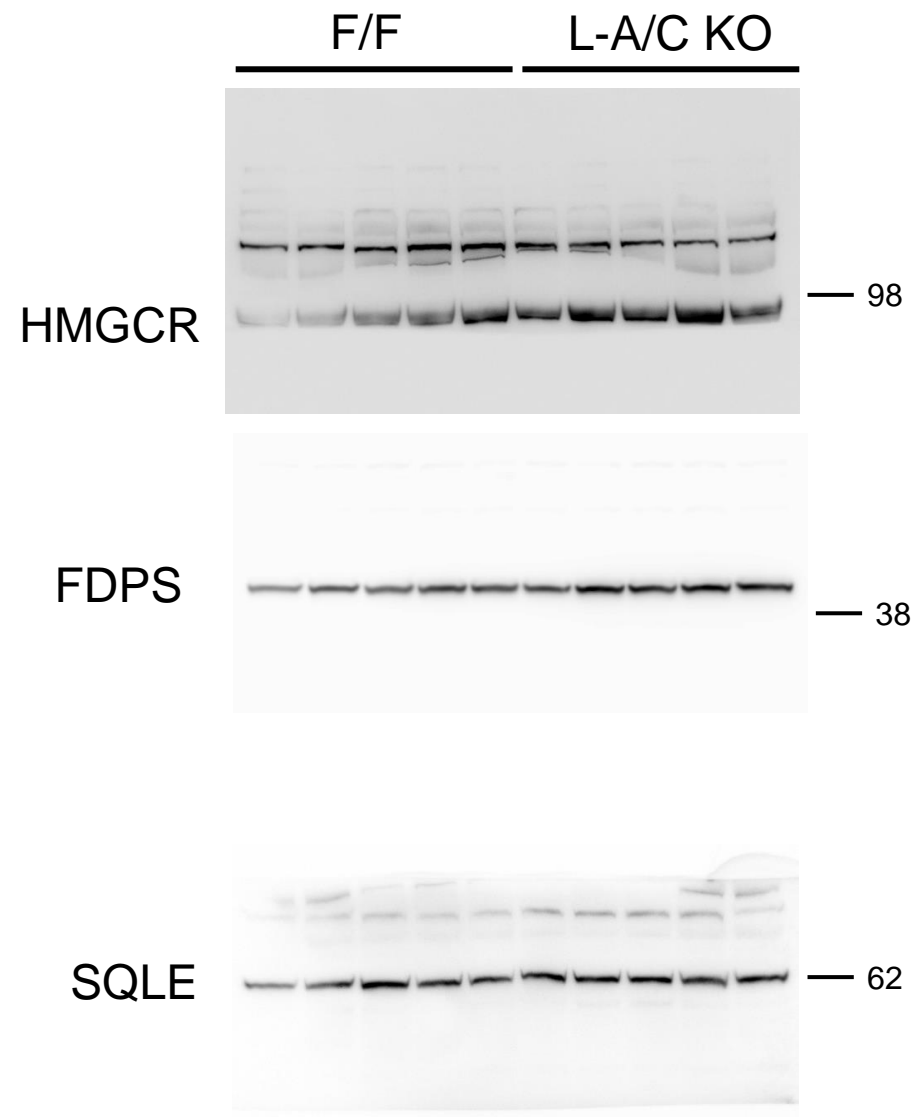


Figure 2g

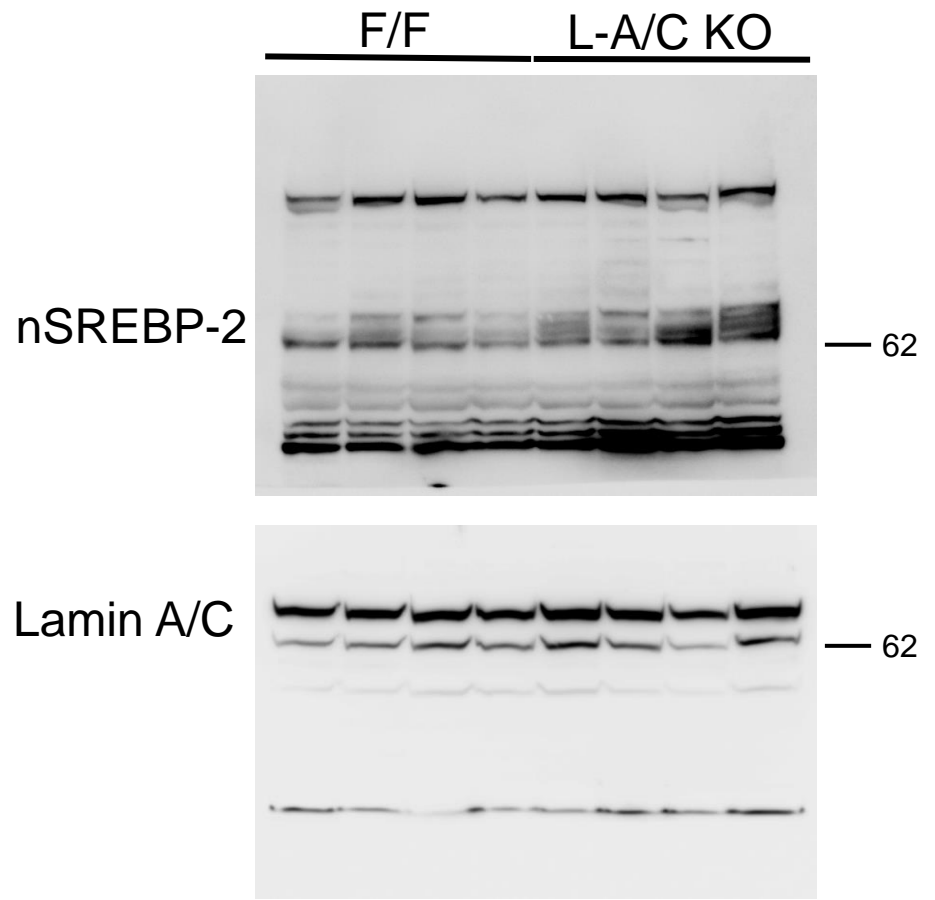
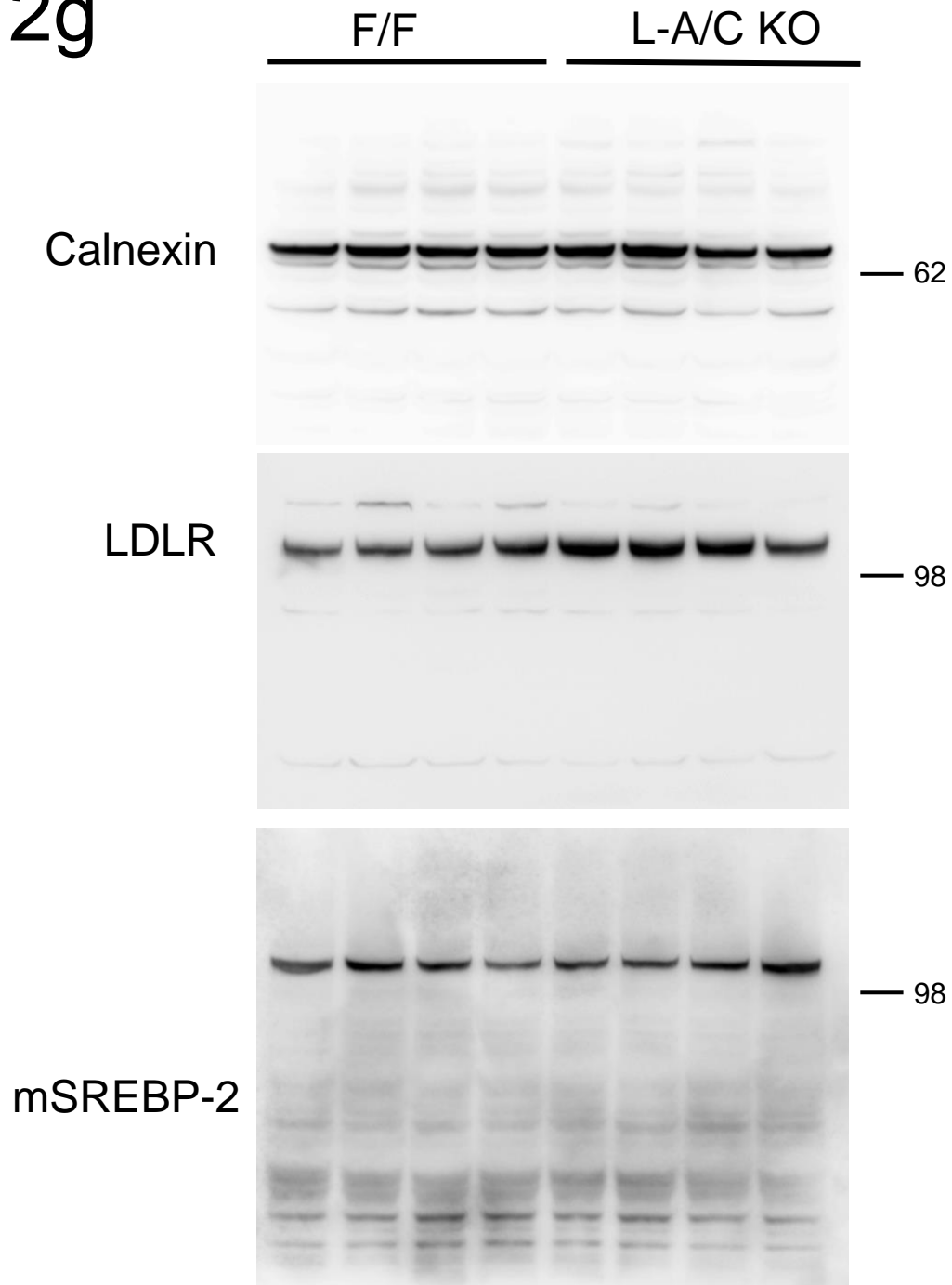


Figure 3c

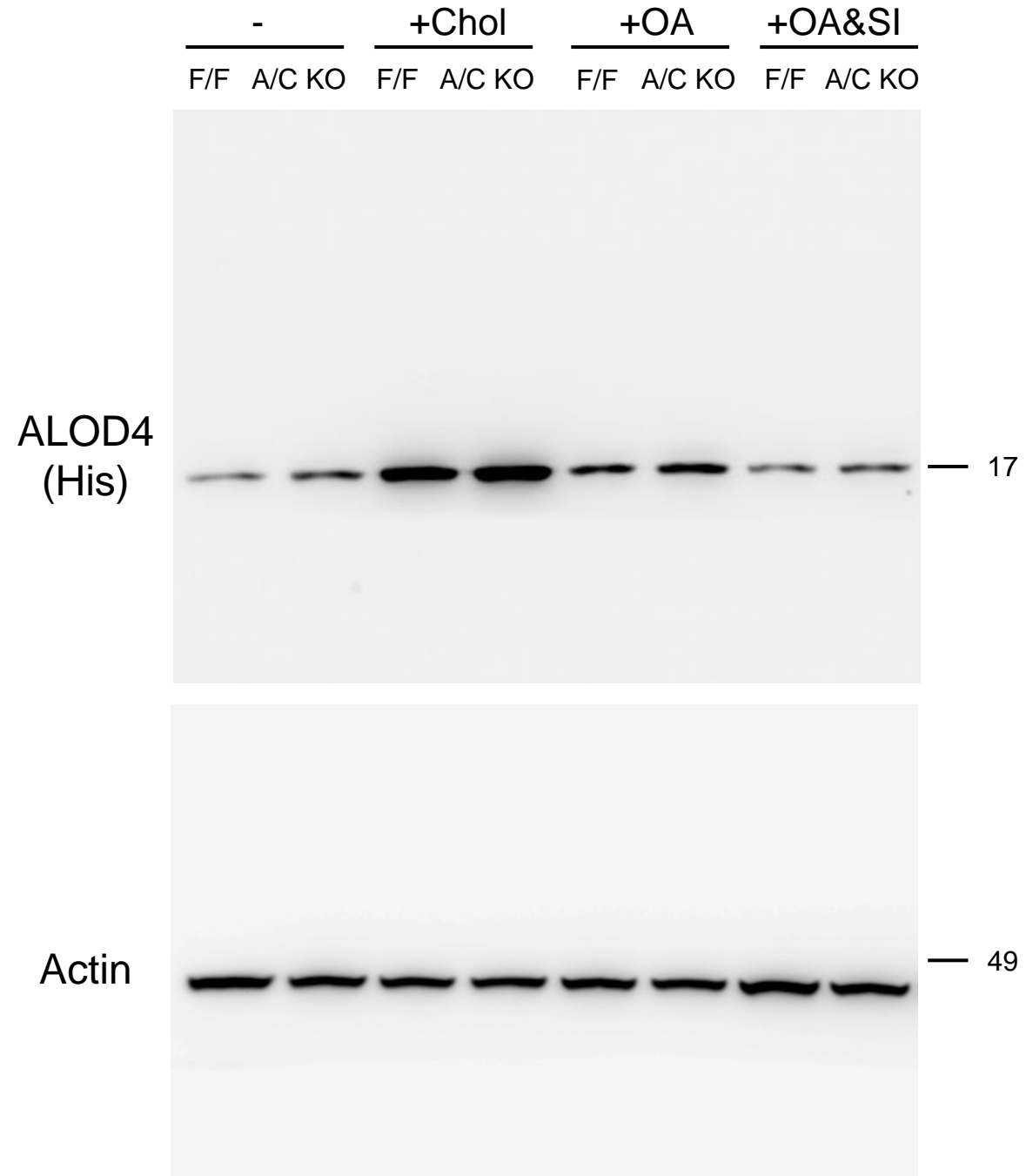


Figure 4b

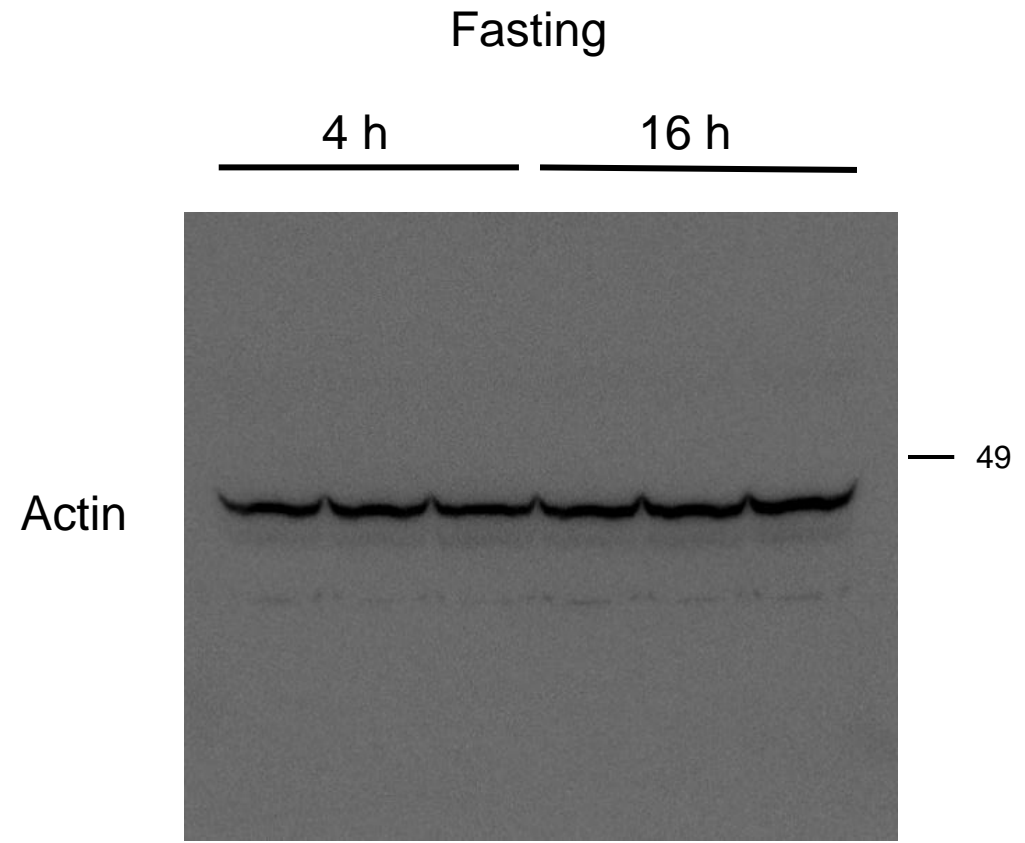
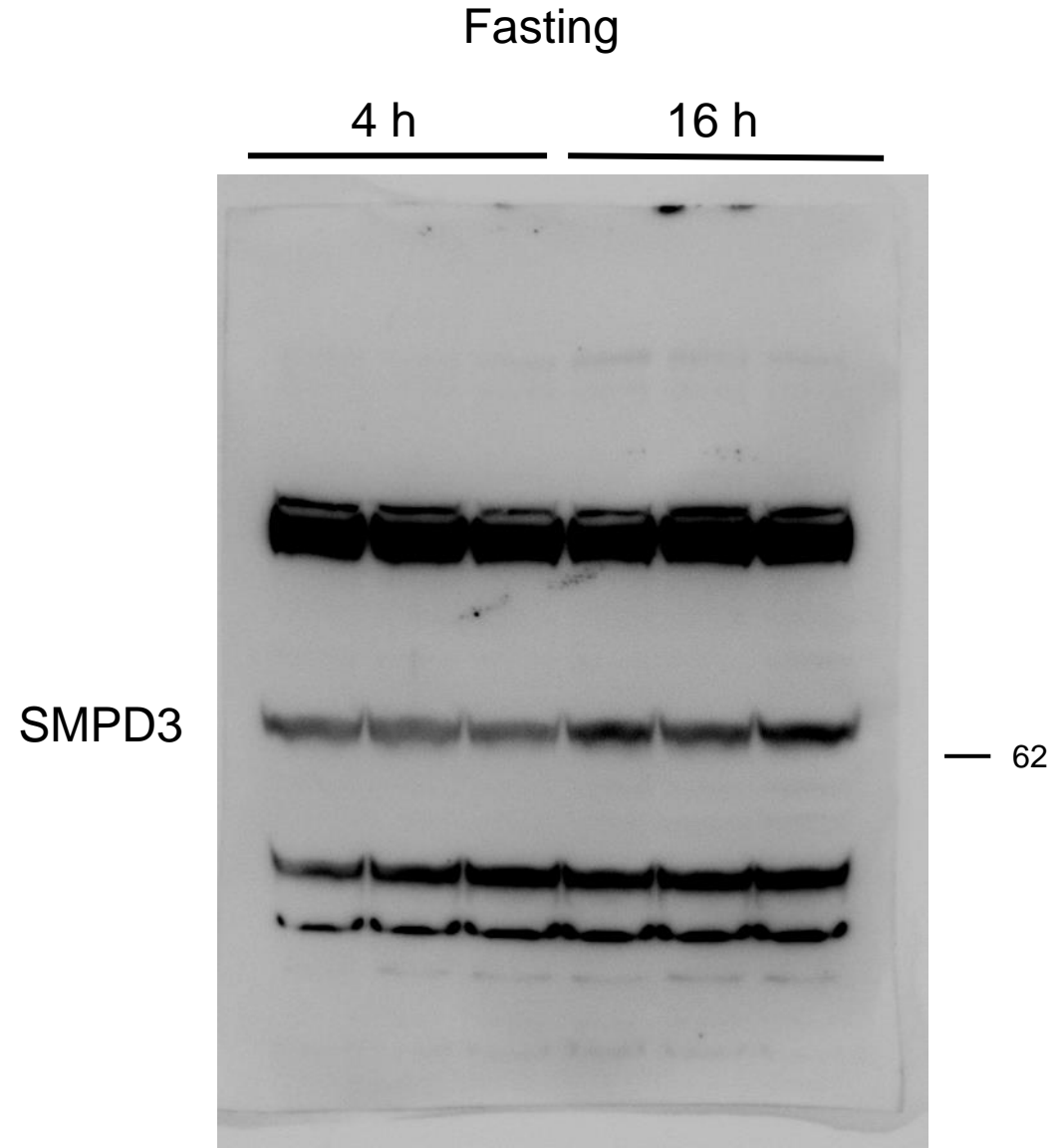


Figure 4c

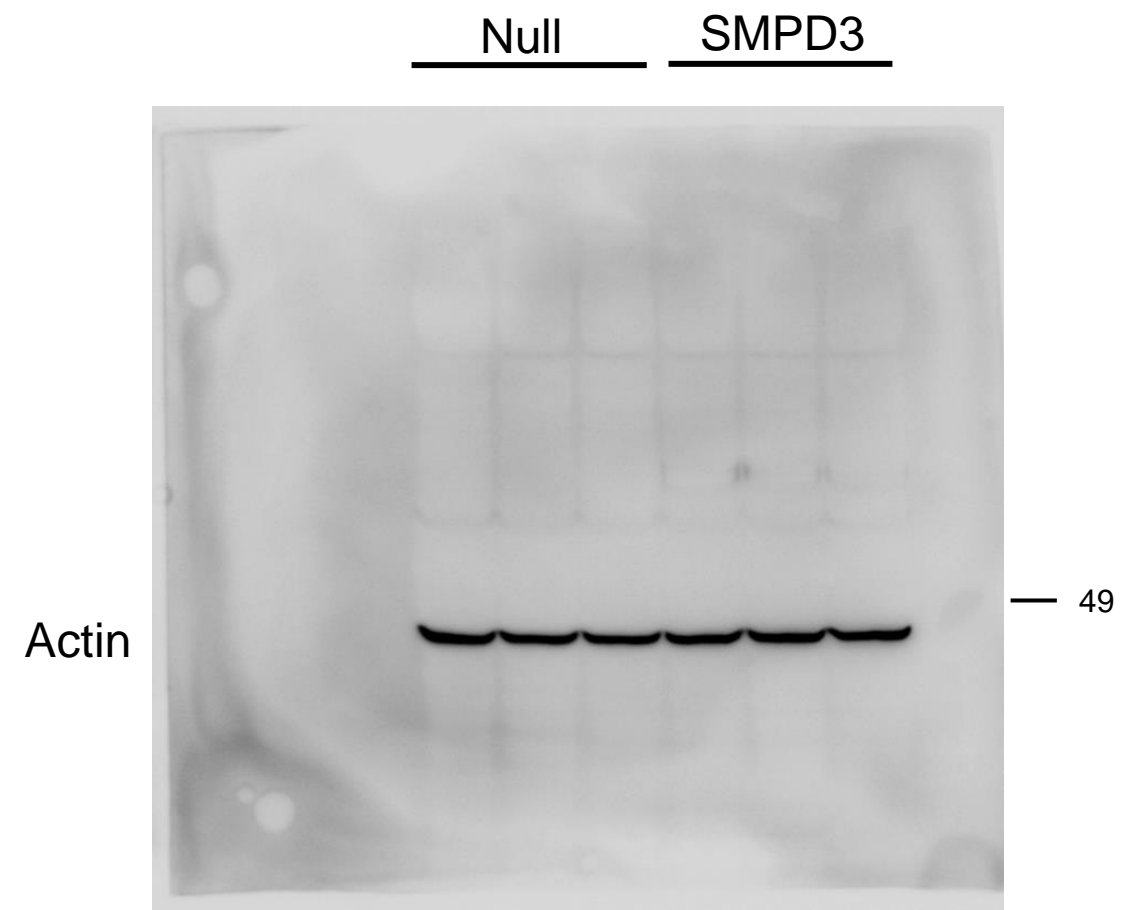


Figure 5b

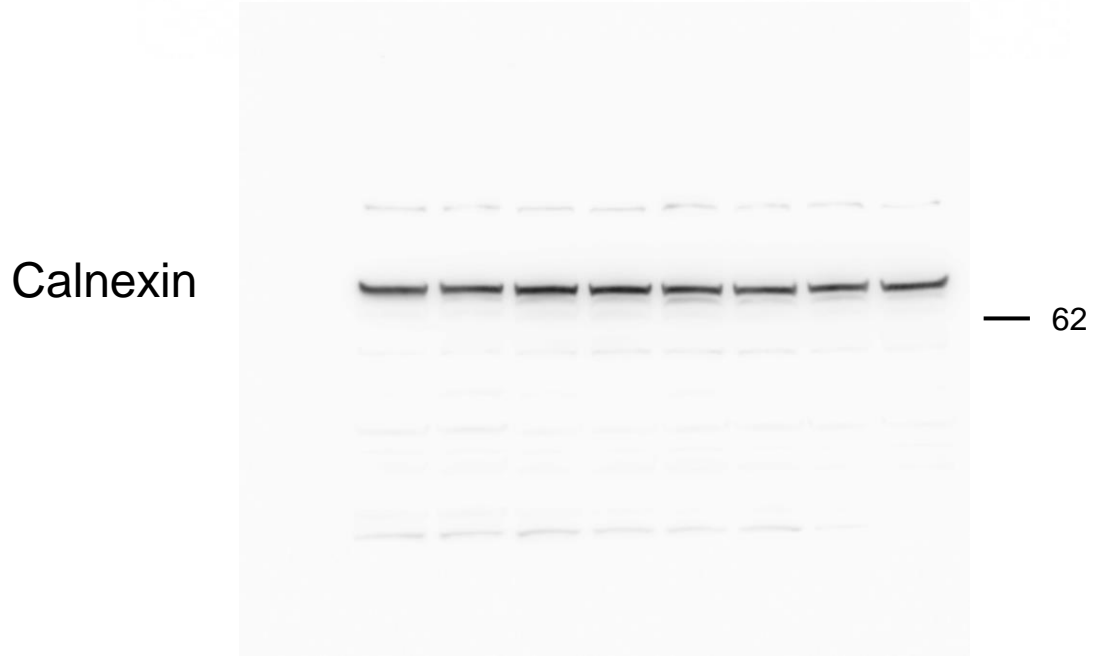
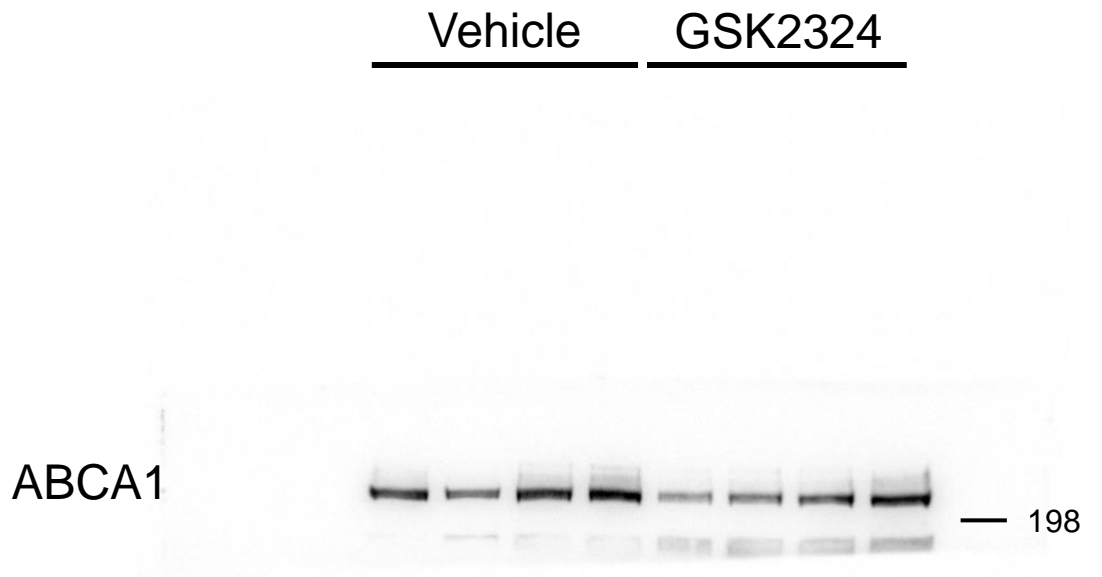
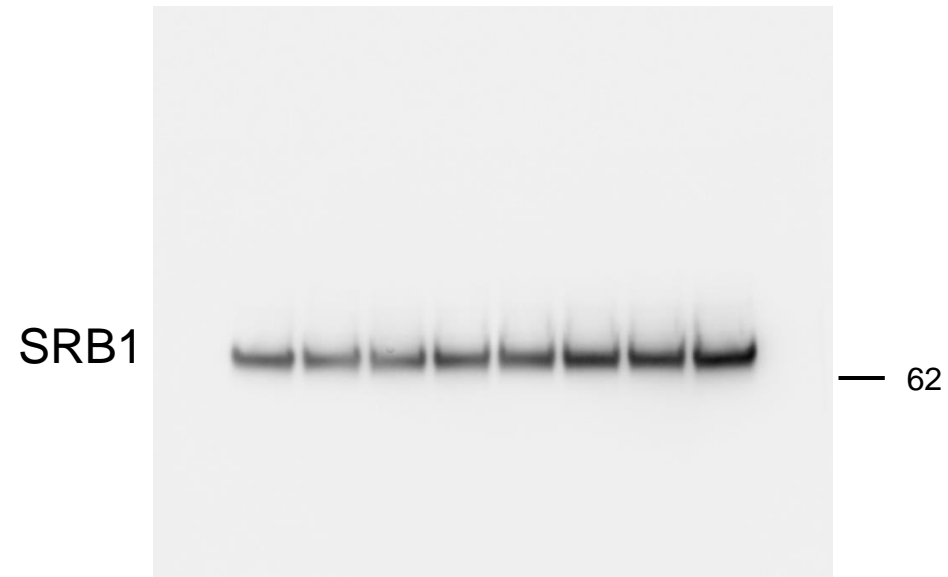
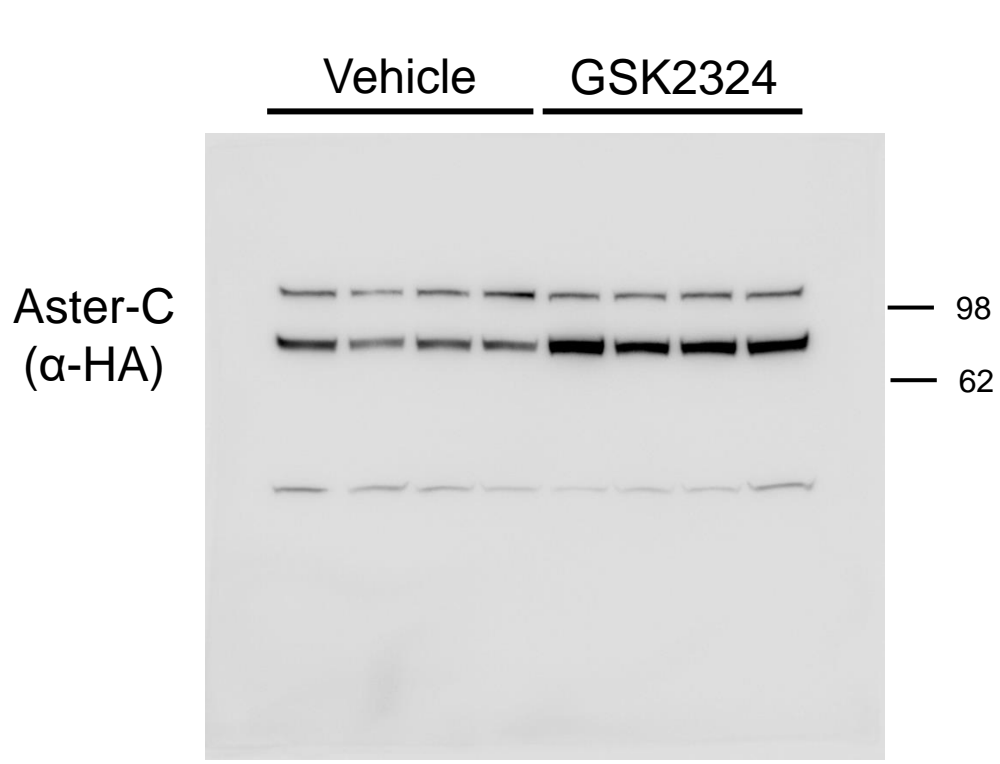
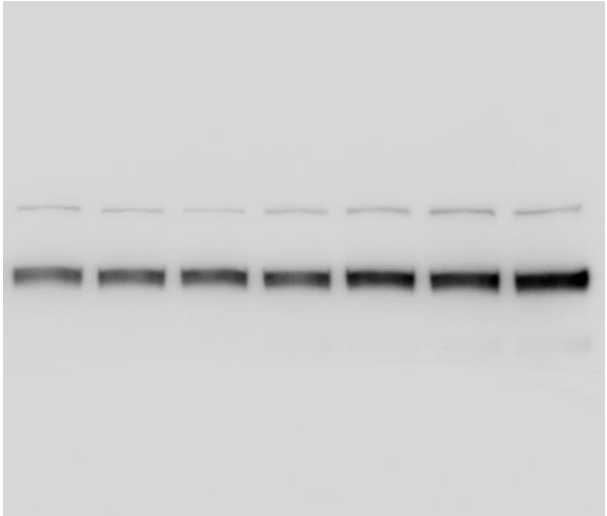


Figure 5e

GW4064 (μM)

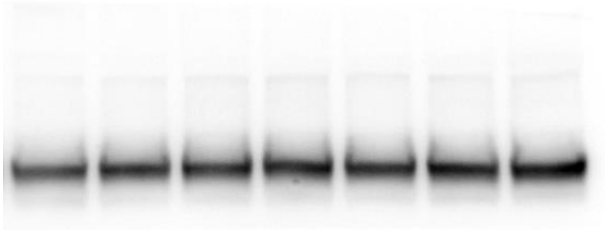
0 0.03 0.1 0.3 1 3 10

Aster-C
(α -HA)



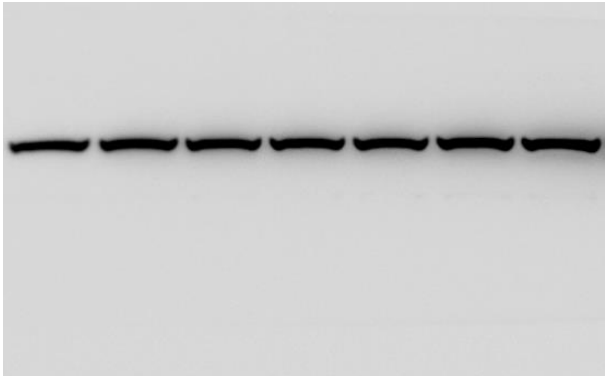
— 98
— 62

SR-BI



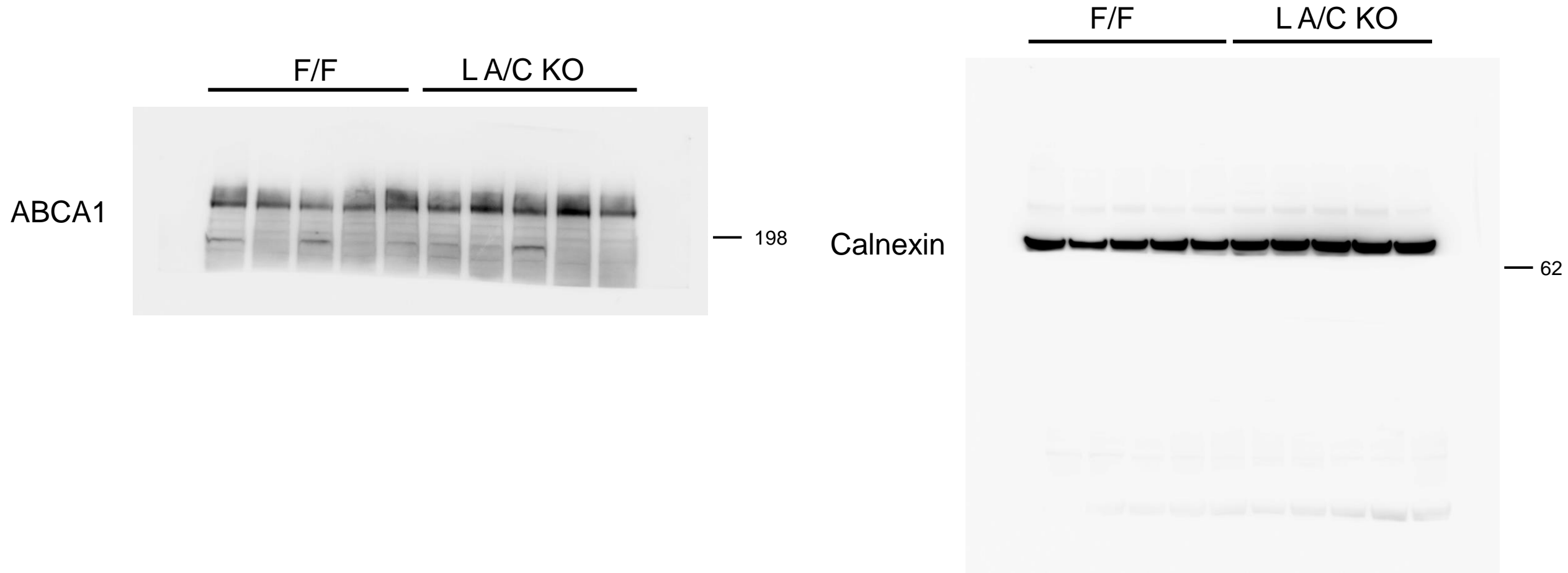
— 62

Actin

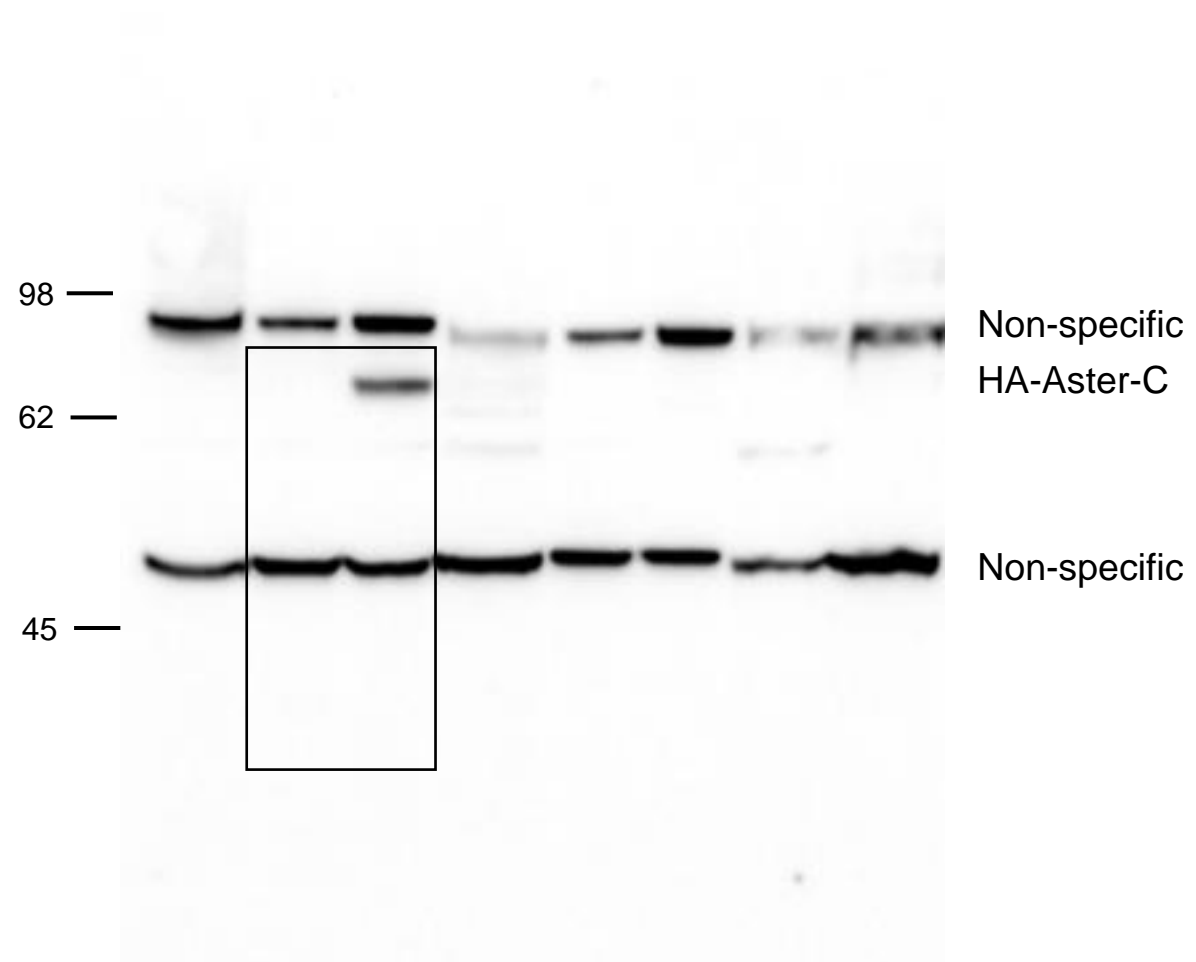


— 49

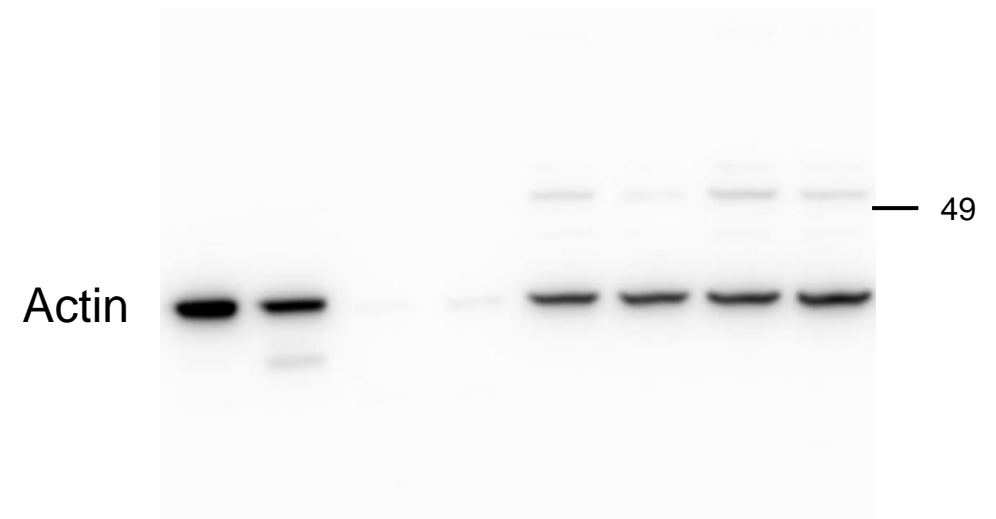
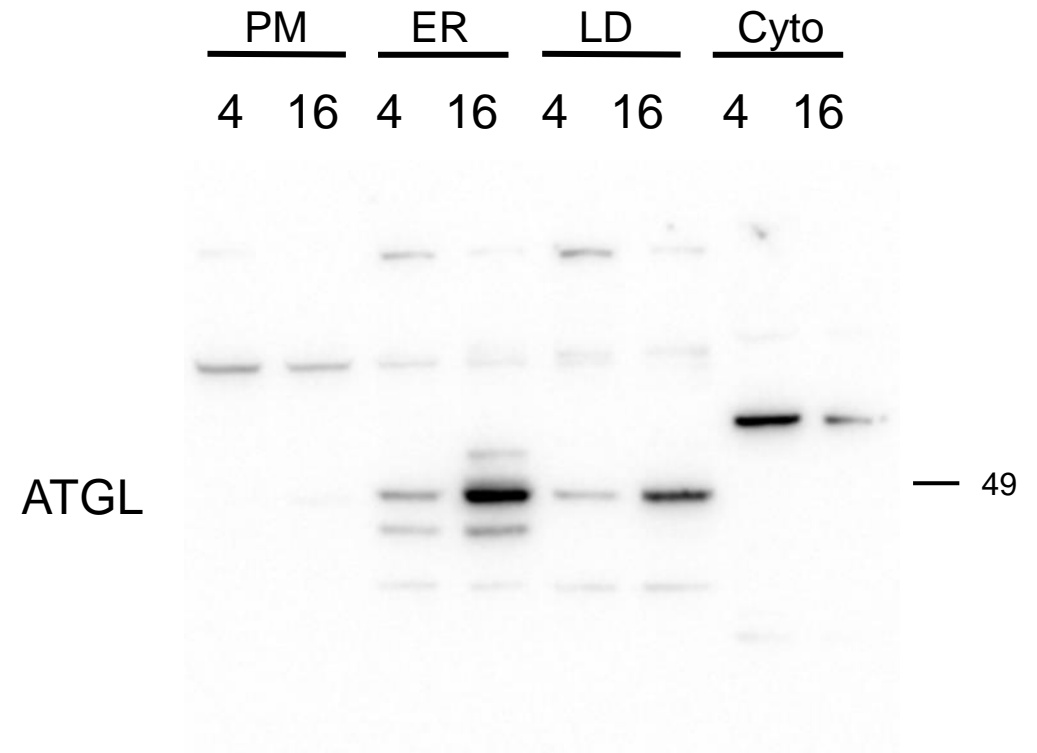
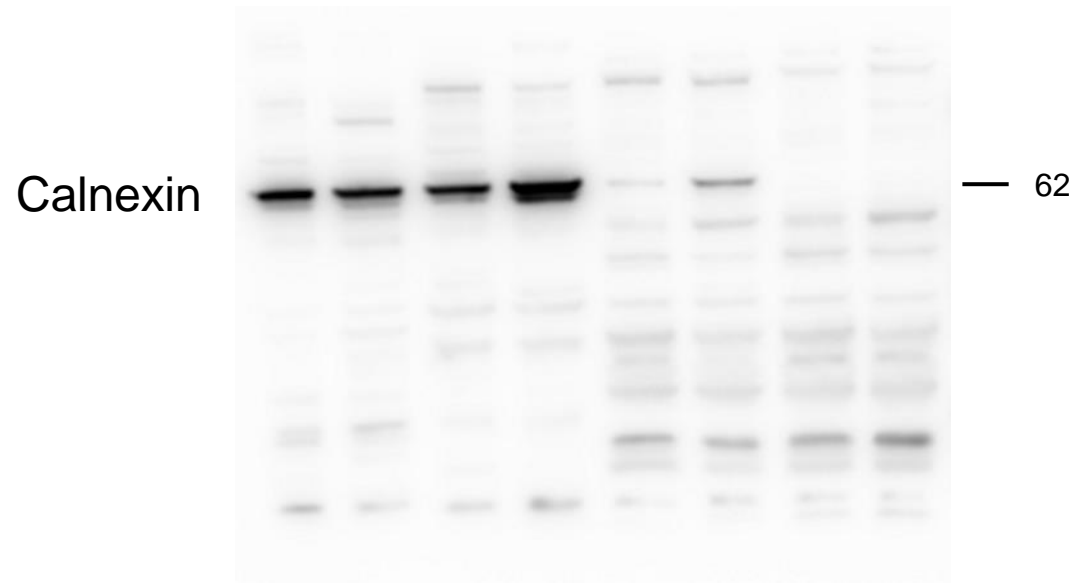
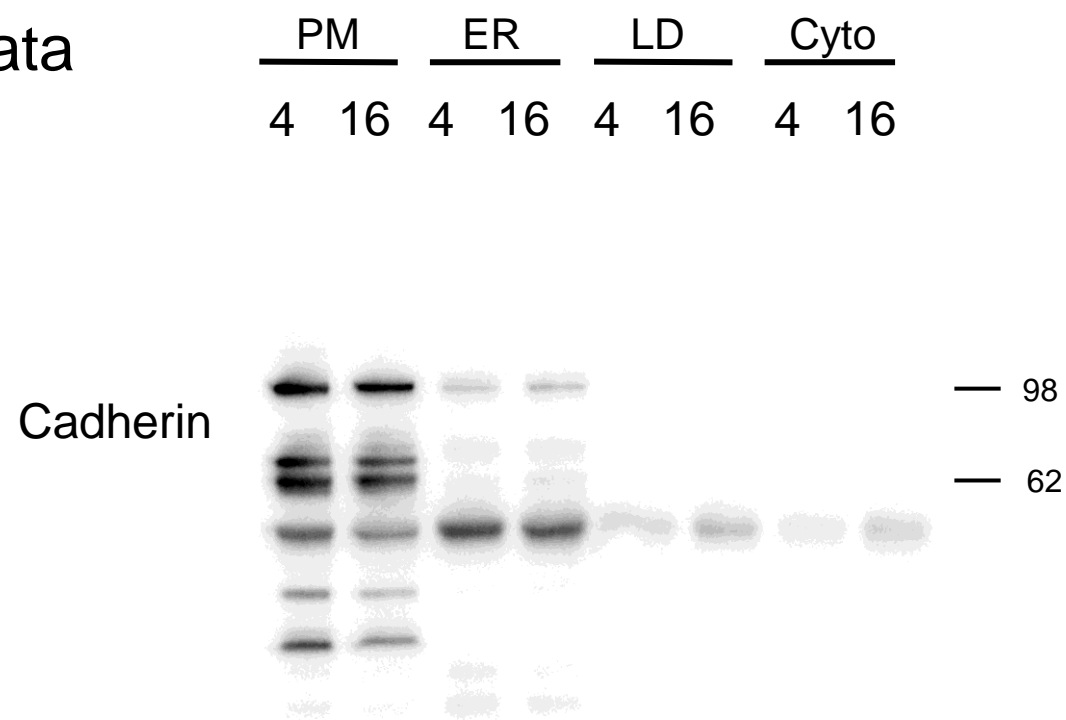
Figure 8c



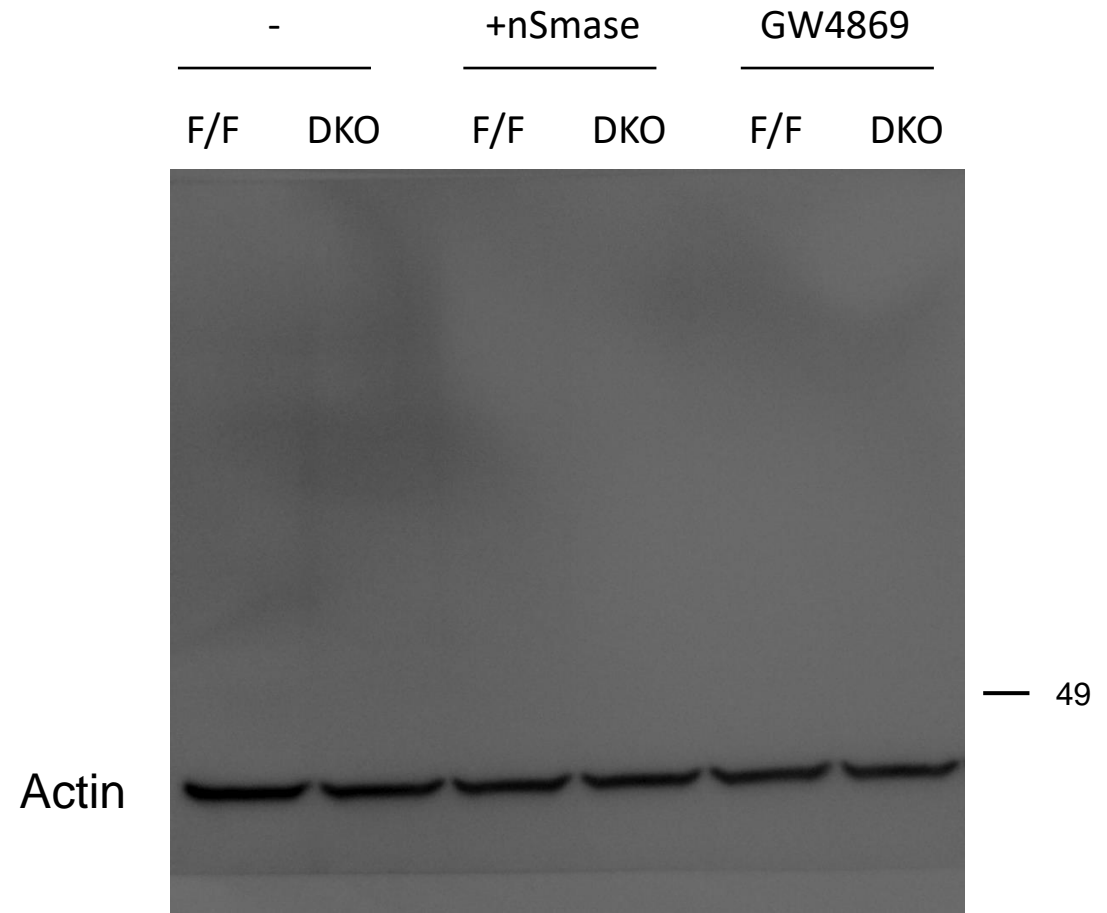
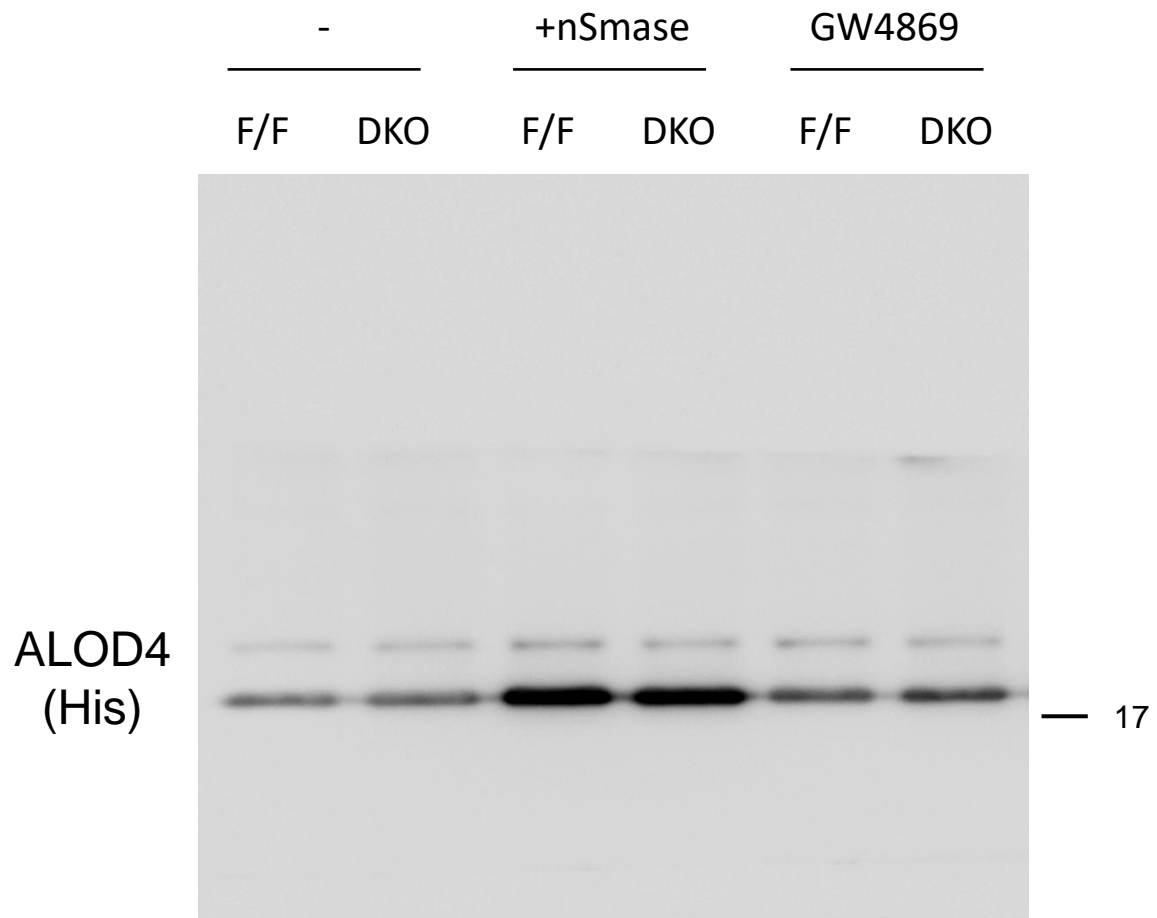
Extended Data
Figure 1b



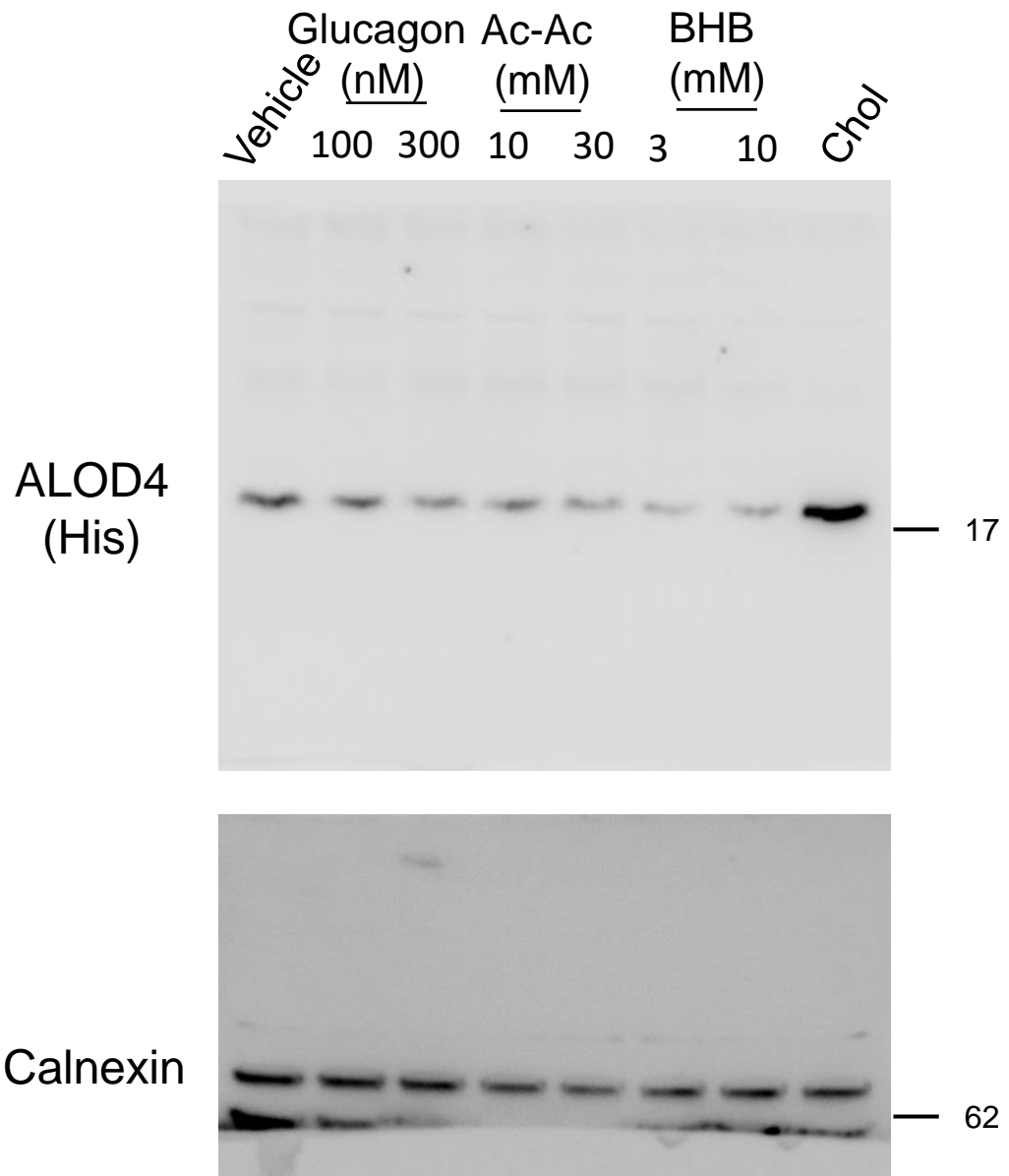
Extended Data
Figure 2g



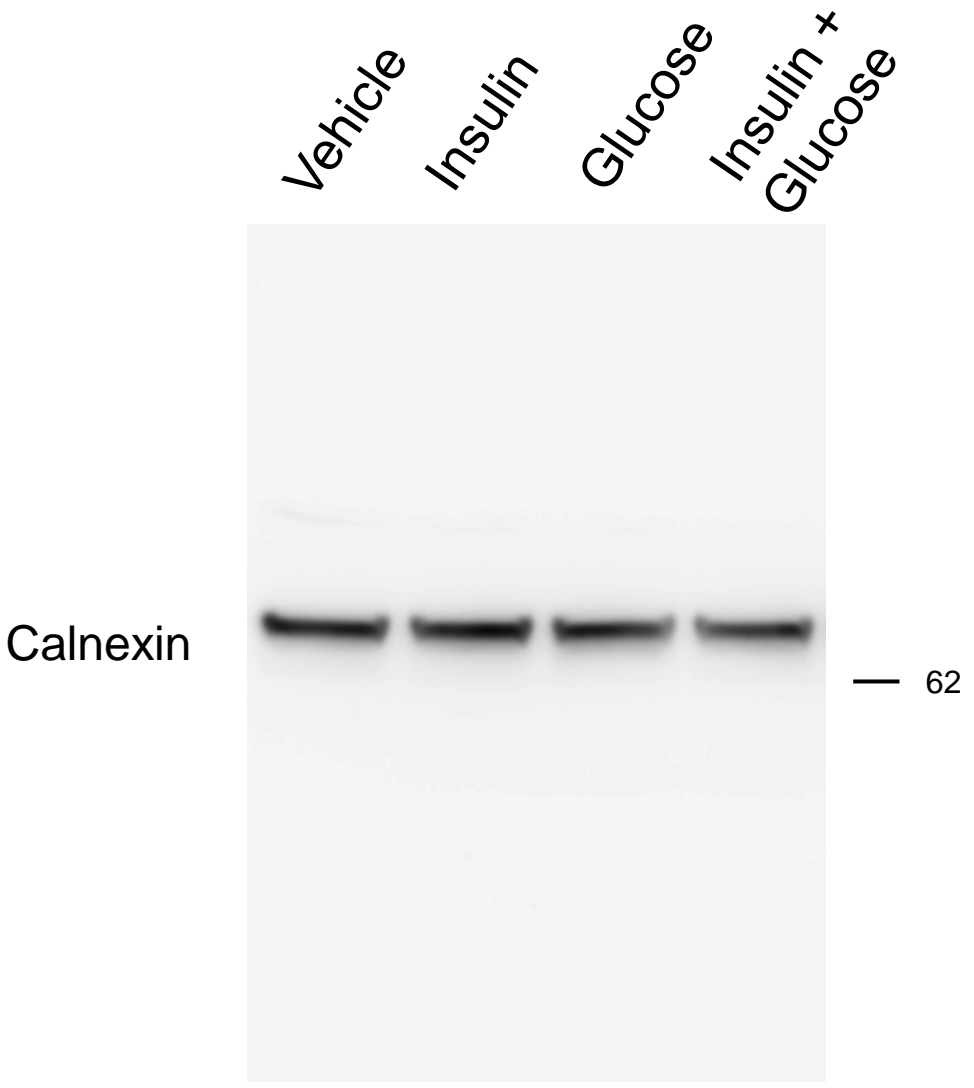
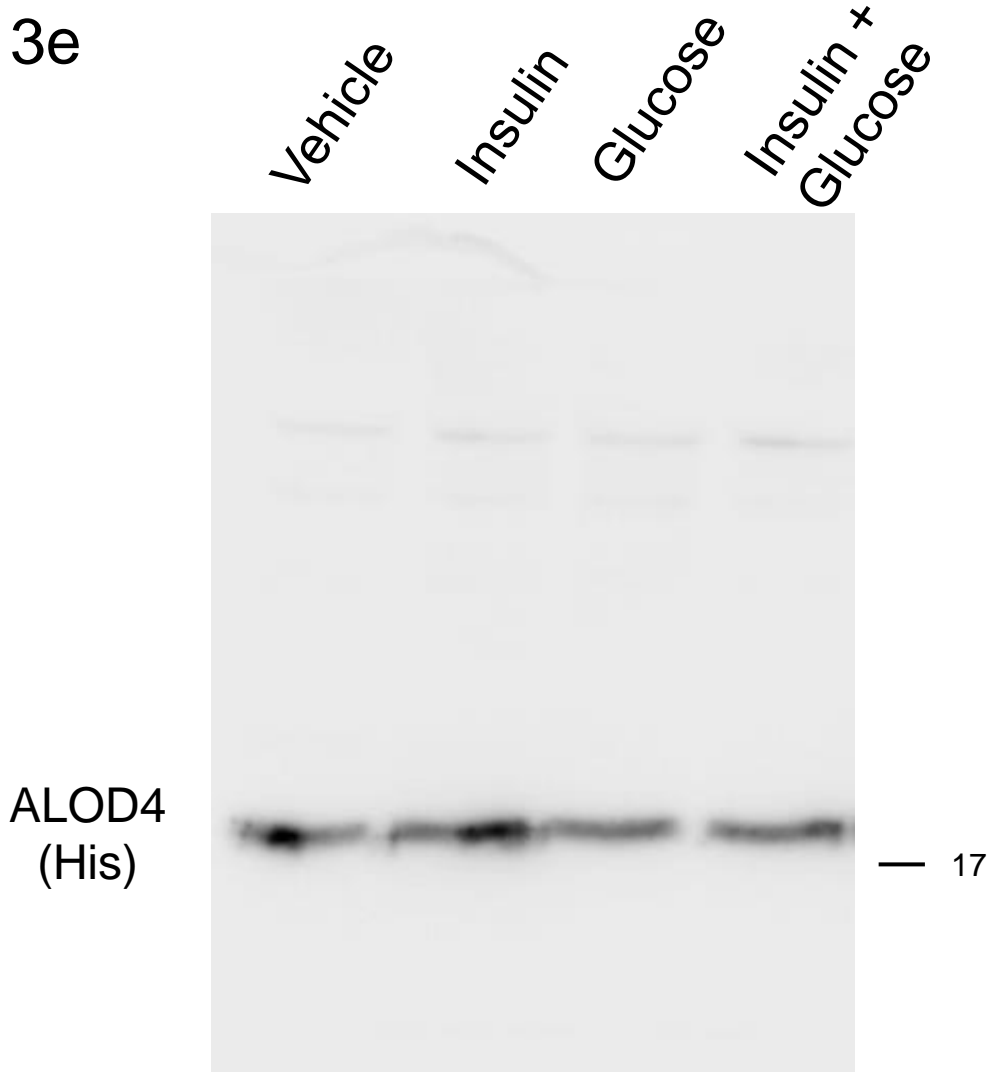
Extended Data Figure 3b



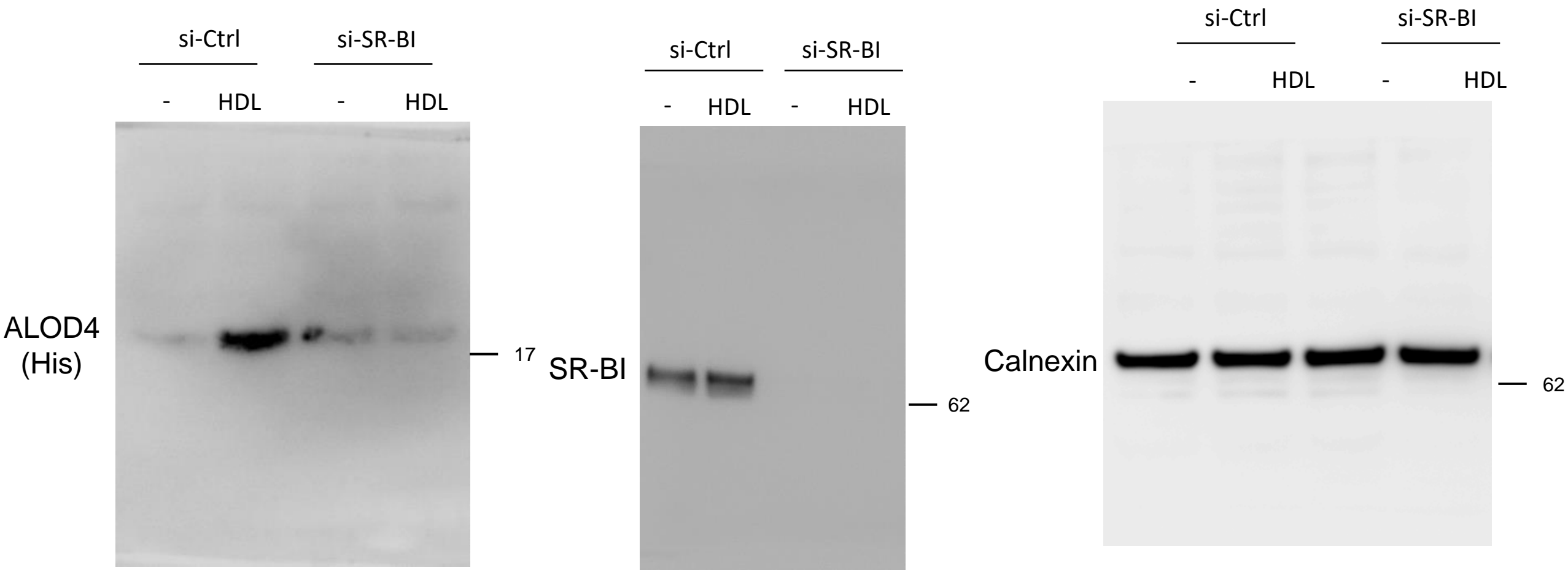
Extended Data
Figure 3d



Extended Data
Figure 3e

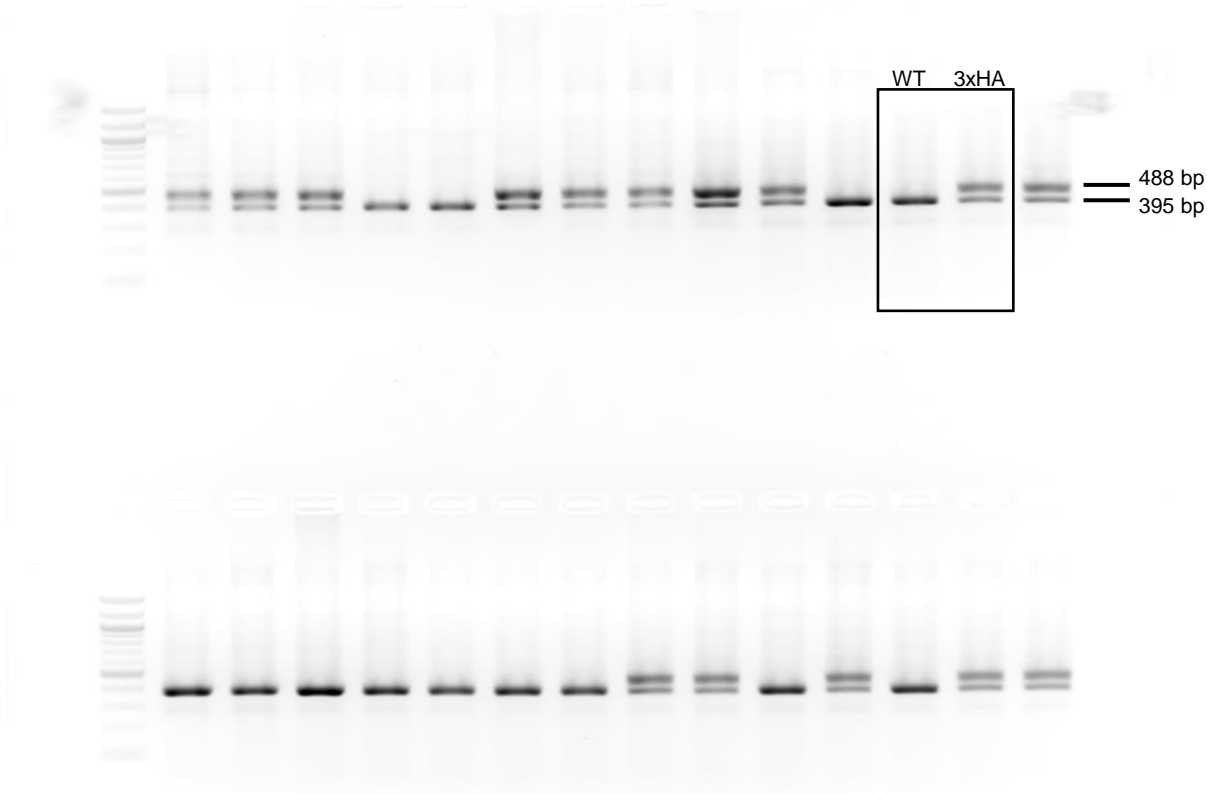


Extended Data
Figure 4a

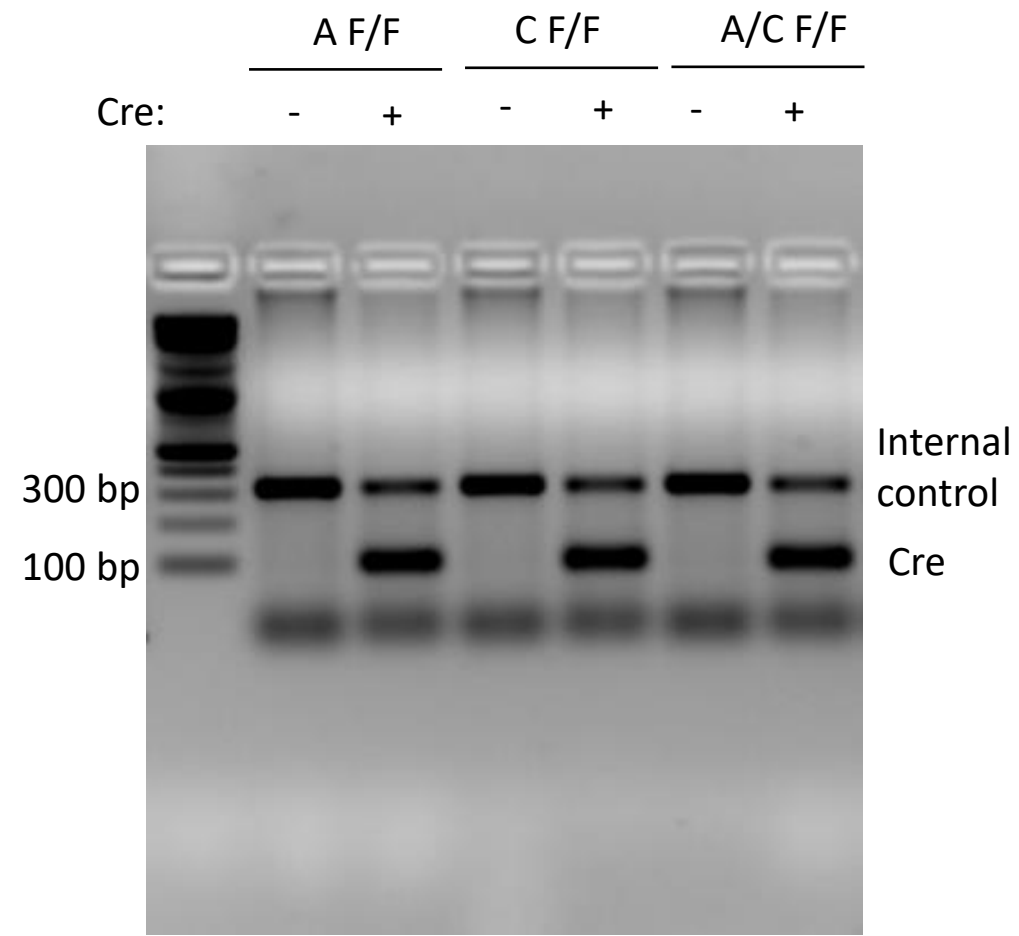
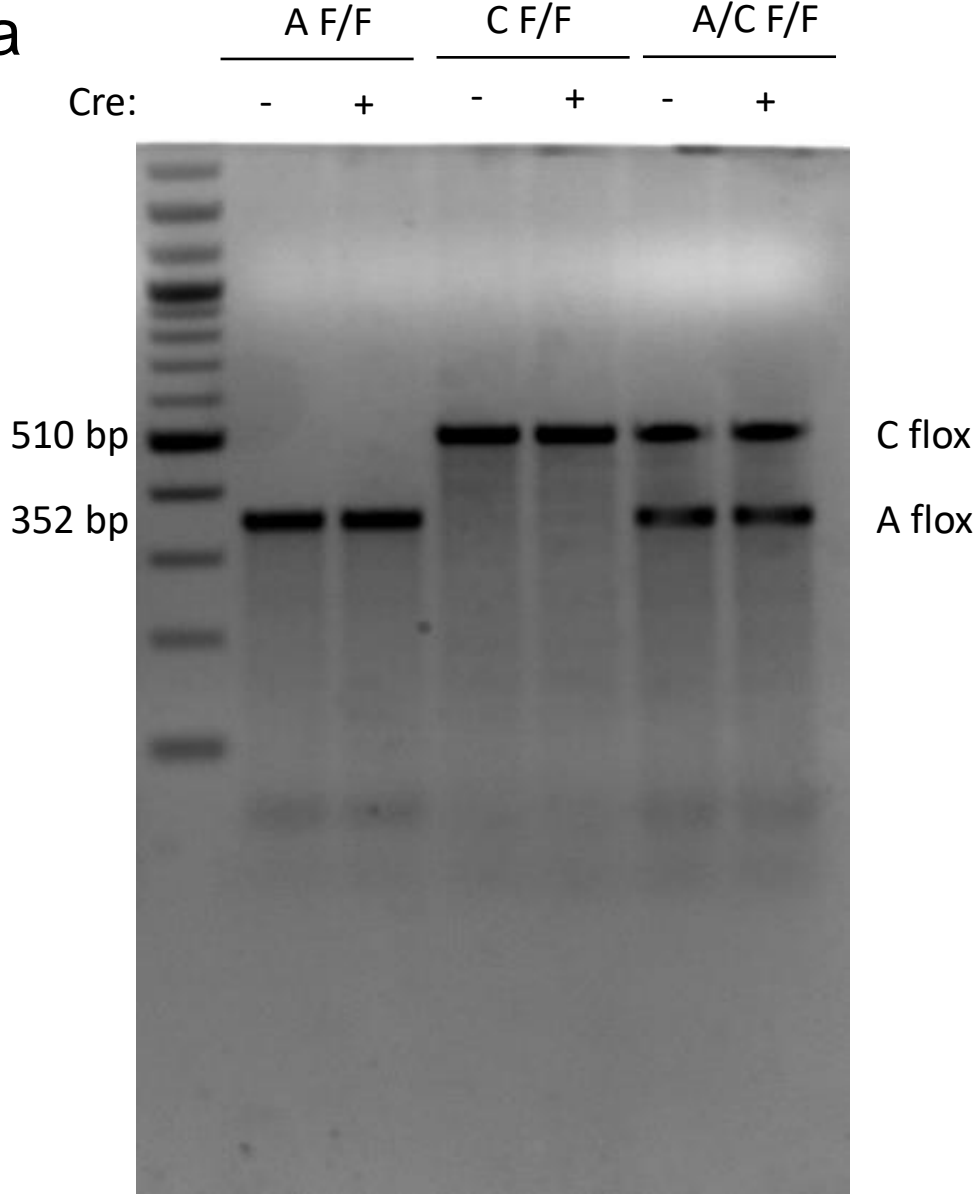


DNA gels

Extended Data
Figure 1b



Extended Data Figure 1d



Microscopy

Figure 1a

Vehicle

+Cholesterol

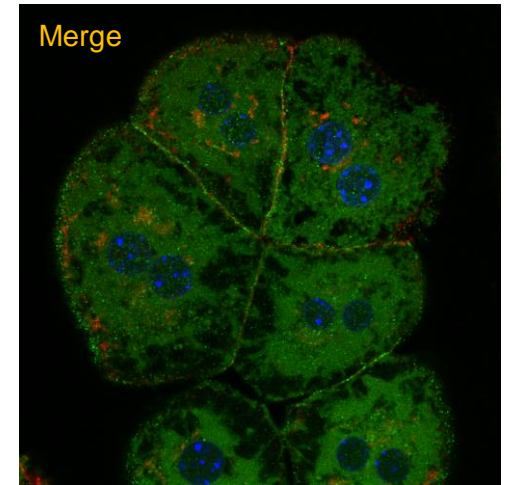
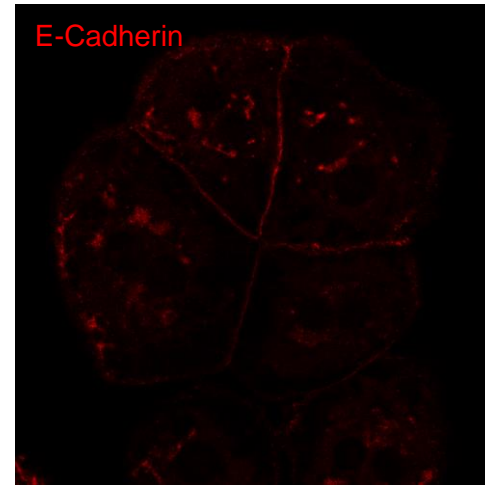
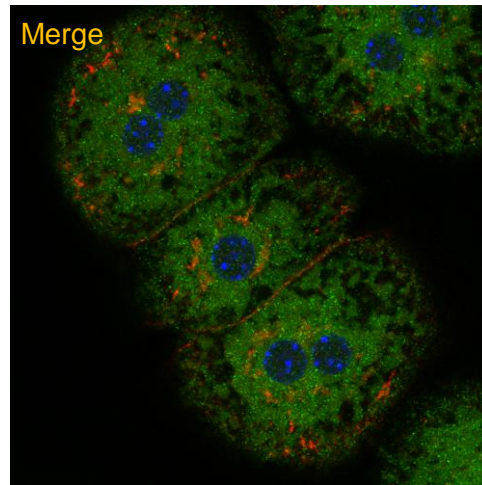
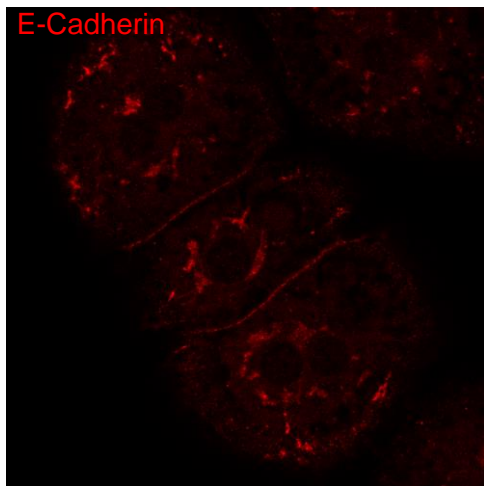
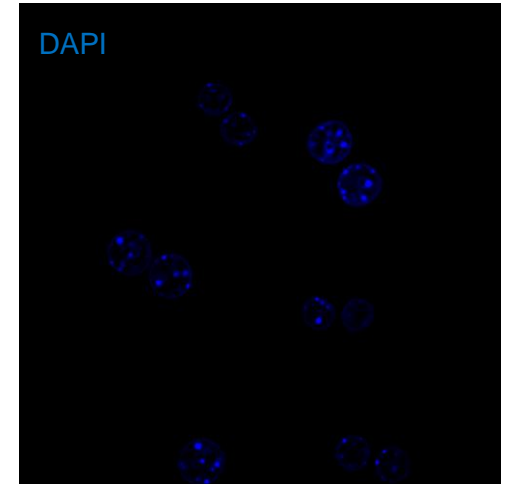
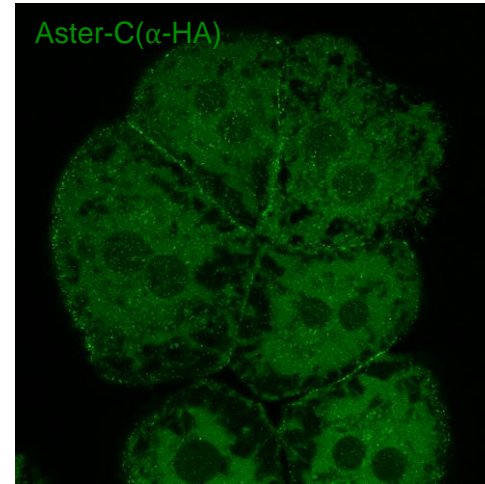
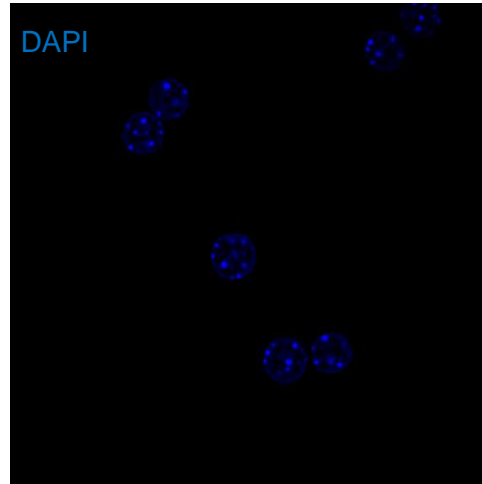
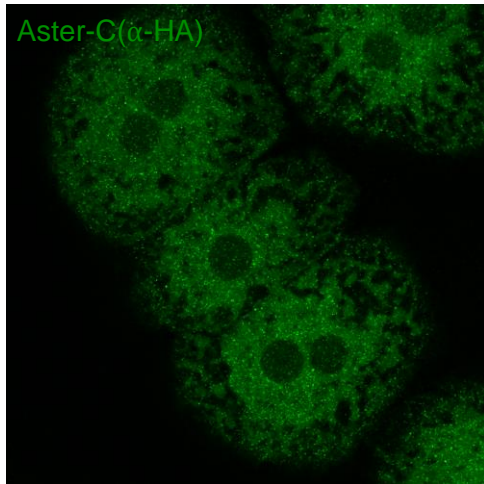
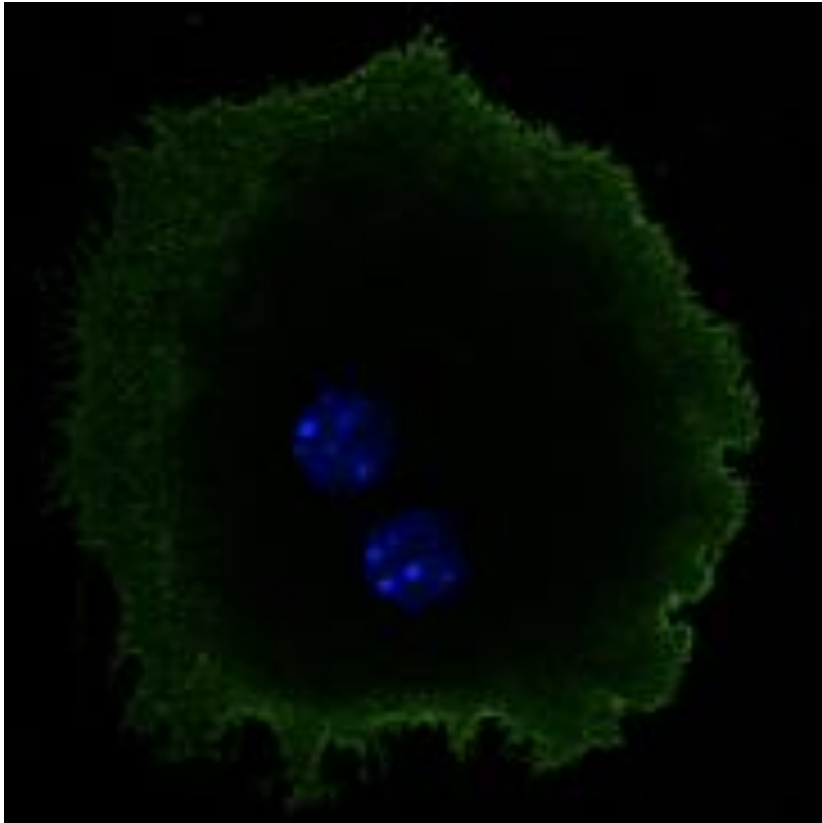


Figure 1a

F/F



L-A/C KO

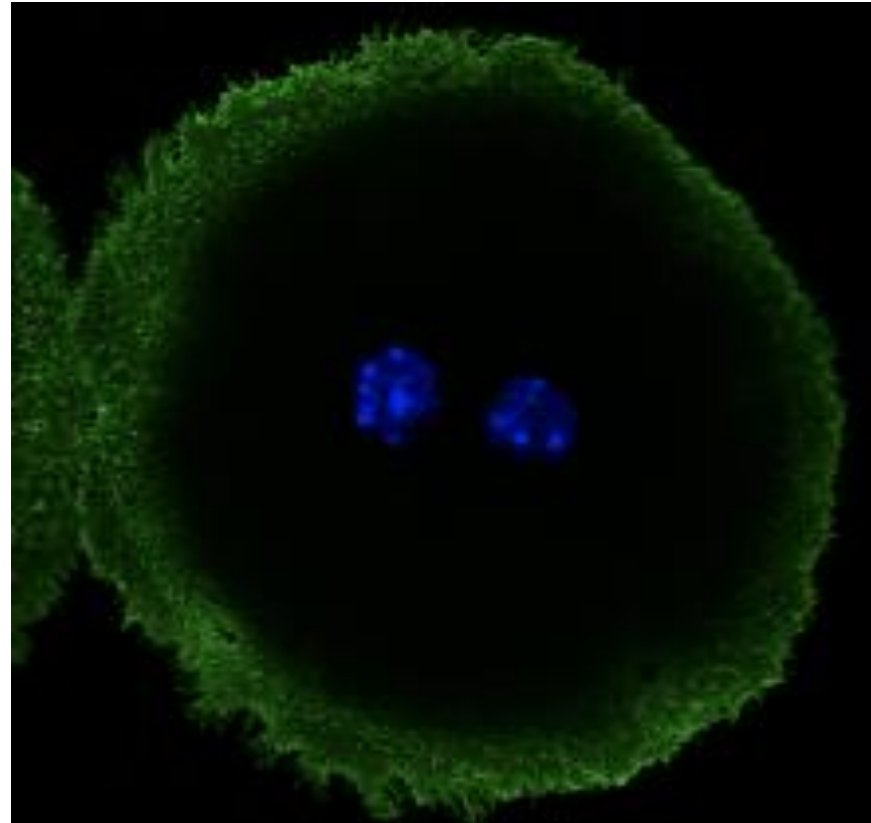
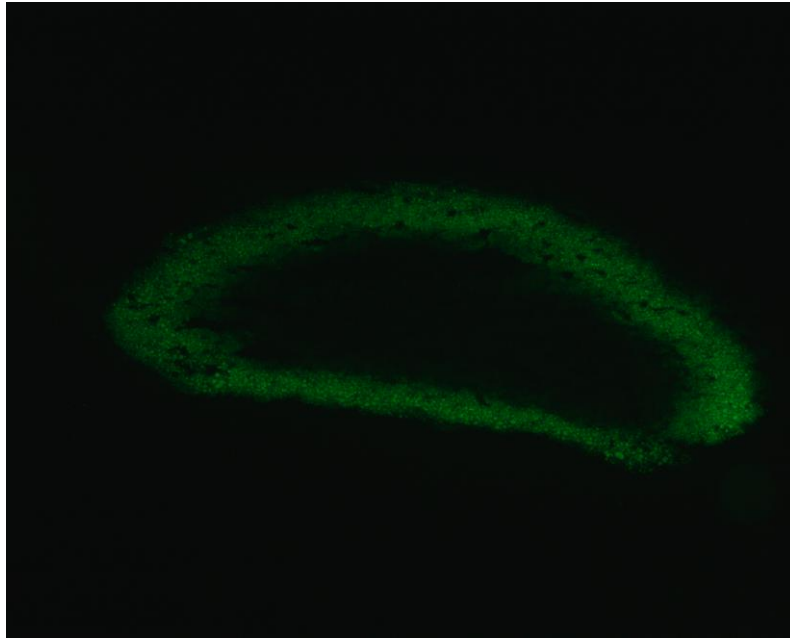


Figure 8f

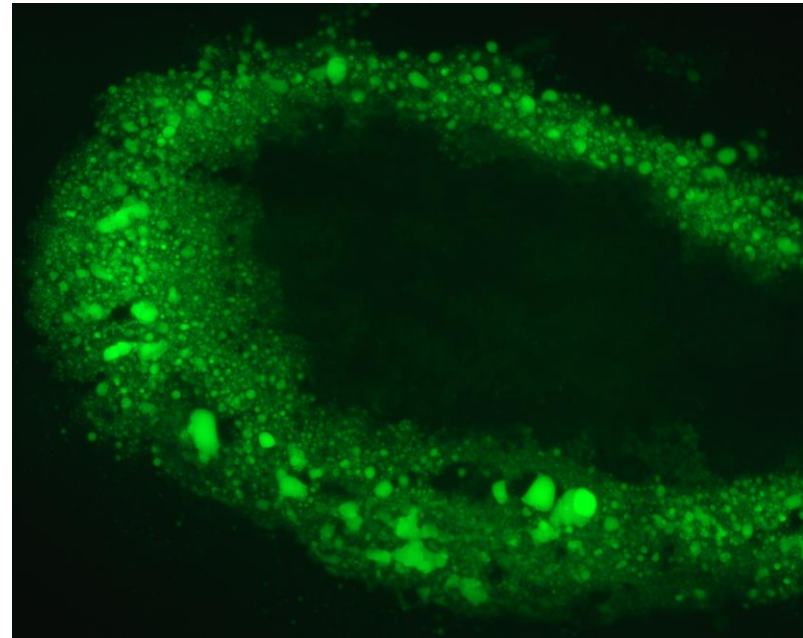
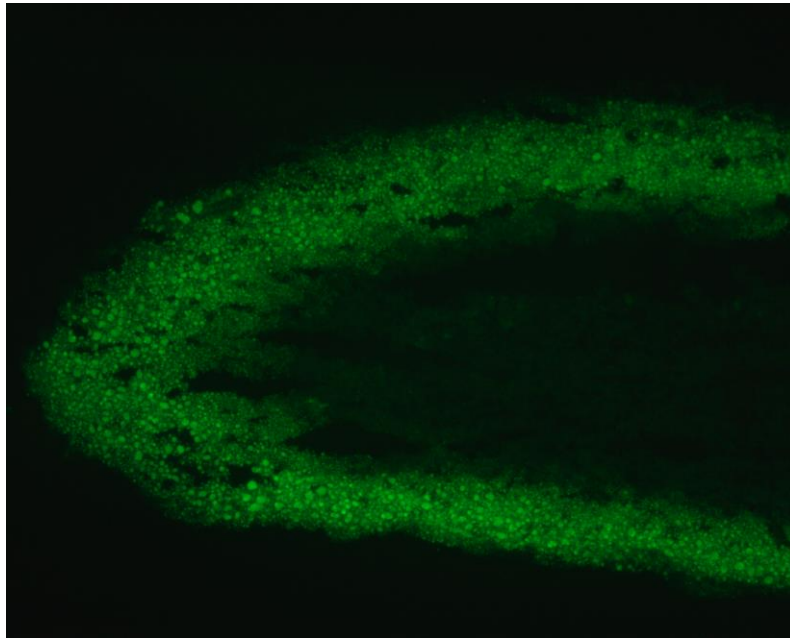
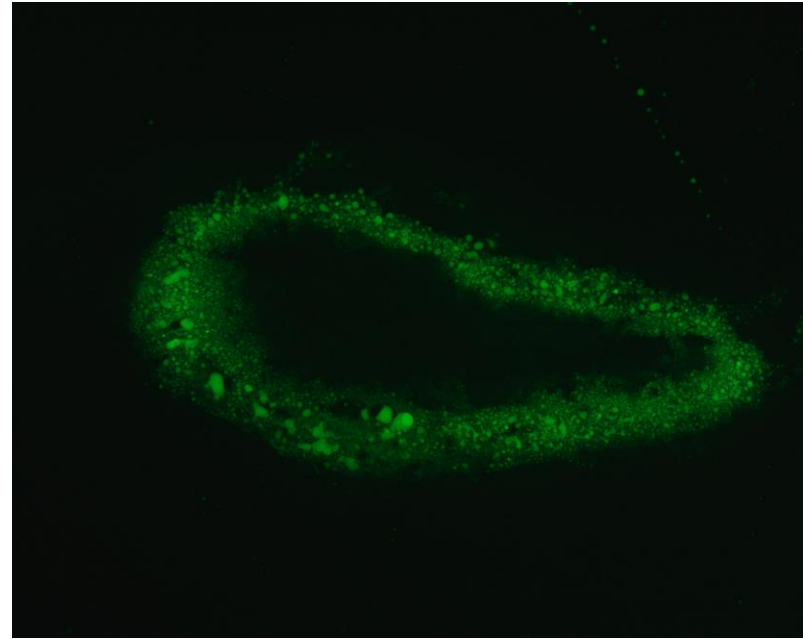


Figure 8g

F/F



L-A/C KO



Flow cytometry

Figure 1d

