

Variable phenotype expression in a family segregating microdeletions of the *NRXN1* and *MBD5* autism spectrum disorder susceptibility genes

Marc Woodbury-Smith^{1,2}, Rob Nicolson³, Mehdi Zarrei², Ryan K.C. Yuen², Susan Walker², Jennifer Howe², Mohammed Uddin², Ny Hoang⁴, Janet A. Buchanan², Christina Chrysler¹, Ann Thompson¹, Peter Szatmari⁵, and Stephen W. Scherer^{2,6}

¹Department of Psychiatry and Behavioural Neurosciences, McMaster University, Hamilton, ON, Canada

²Program in Genetics and Genome Biology, The Centre for Applied Genomics, The Hospital for Sick Children, Toronto, ON, Canada

³Department of Psychiatry, University of Western Ontario, London, ON, Canada

⁴Autism Research Unit, The Hospital for Sick Children, Toronto, ON, Canada

⁵Centre for Addiction and Mental Health, The Hospital for Sick Children & University of Toronto, Toronto, ON, Canada

⁶McLaughlin Centre and Department of Molecular Genetics, University of Toronto, Toronto, ON, Canada

Abstract

Autism Spectrum Disorder (ASD) is a developmental condition of early childhood onset, which impacts socio-communicative functioning and is principally genetic in etiology. Currently, more than 50 genomic loci are deemed to be associated with susceptibility to ASD, showing *de novo* and inherited unbalanced copy number variants (CNVs) and smaller insertions and deletions (indels), more complex structural variants (SVs), as well as single nucleotide variants (SNVs) deemed of pathological significance. However, the phenotypes associated with many of these genes are variable, and penetrance is largely unelaborated in clinical descriptions. This case report describes a family harboring two CNV microdeletions, which affect regions of *NRXN1* and *MBD5* – each well-established in association with risk of ASD and other neurodevelopmental disorders. Although each CNV would likely be categorized as pathologically significant, both

Address for Correspondence: Marc Woodbury-Smith, St Joseph's Healthcare, West 5th Campus, 100 West 5th Street, Hamilton, ON, Canada. L9C 0E3, woodbur@mcmaster.ca, Tel: 1-905-522-1155, Fax 1-905-387-7714.

Competing Interests

The authors declare no conflict of interest.

Contributions

MWS conceived the case report, reviewed and compiled the background literature and wrote the first draft of the manuscript. RN, NH and CC were involved in the collection and interpretation of clinical data, and AT in managing the database of clinical information. MU and MZ were directly involved in interpretation and analysis of CNV data. RKC and SW analyzed and interpreted the sequence data. JH assisted in data analysis and interpretation, and PS and JB with the conceptual ideas. All authors directly contributed to manuscript revisions. SWS assisted in conceiving the case report, funding the research project and staff, and was involved in writing and revising the manuscript.

genomic alterations are transmitted in this family from an unaffected father to the proband, and shared by an unaffected sibling. This family case illustrates the importance of recognizing that phenotype can vary among exon overlapping variants of the same gene, and the need to evaluate penetrance of such variants in order to properly inform on risks.

Keywords

Autism spectrum disorder (ASD); penetrance; phenotype; *NRXNI*; *MBD5*

Introduction

Autism Spectrum Disorder (ASD) is a developmental disorder of early childhood onset that impacts socio-communicative functioning, and which is principally genetic in etiology.¹ It has a high rate of comorbidity with intellectual disability and other neurodevelopmental, neuropsychiatric, and medical disorders.¹ ASD is relatively common, affecting ~1.5% of children,² and is often associated with lifelong disability. Its core impairments and comorbidities present a major challenge for caregivers and significant demands on healthcare provision, and, by implication, healthcare budget.³ Progress in elucidating its genetic etiopathogenesis will likely pave the way for new treatment options. To this end, significant progress has been made in the last decade with the advent of dense, high-throughput genotyping. More than 50 genes and loci harbouring *de novo* and inherited copy number variants (CNVs), structural variations, and single nucleotide variants (SNVs) with diagnostic value (hereafter collectively referred to as ‘mutations’ affecting the individuals discussed) have been implicated in ASD so far.^{4,5} Functionally, many of these genes cluster in the post-synaptic density (PSD), whereas others are involved in neurite growth or histone modification.⁶

The term penetrance is used to describe the probability of a particular specified phenotype or set of phenotypes in those individuals harbouring a particular mutation, whereas variable expression describes the range of phenotypic features observed among those with penetrant mutations.⁷ While some mutations are strongly associated with neurodevelopmental phenotypes such as intellectual disability and/or ASD,⁸ many of the mutations in the identified genes are characterized incomplete penetrance, and variable expressivity and pleiotropy are seen in association with particular genotypes.⁹ For example, CNVs at 16p11–13 have been described in association with ASD in addition to a number of different neuropsychiatric disorders of variable severity¹⁰, and the same is true of deletions in the *SHANK*¹¹ and *NRXN* genes^{12,13,14,15}. We are unaware of any susceptibility gene/locus that shows specificity for a single neurodevelopmental disorder.

Such variable expression and pleiotropy (multiple effects of a single gene) are not unusual, perhaps reflecting expression in different tissues, or shared pathophysiological mechanisms between disorders.^{7,16} The ultimate phenotype may be influenced by the interplay of these with other factors: genetic (including sex), environmental (including maternal and hormonal influences) and epigenetic.⁷ A more striking observation is that some variants, classified as pathogenic, can be present without any apparent clinical consequence in some people – i.e.

non-penetrant. In particular, some individuals with ASD or other neurodevelopmental disorders have been reported to share an ostensibly pathogenic variant with a phenotypically normal transmitting parent, and sometimes also one or more unaffected siblings.^{17,18,19} The underlying mechanism illustrated by such cases is poorly understood, although factors such as genomic context, impact on protein structure and function, and the effect of modifier genes may be important.⁷

Family based research does indicate that ASD itself is often expressed as a broader phenotype, beyond the bounds of the clinical spectrum, with family members often displaying mild, subclinical, traits.²⁰ Indeed, the sibling recurrence for this broad autism phenotype (BAP) is higher than for ASD.²¹ These milder traits do not often impact function, and therefore may not be immediately apparent or come to the attention of clinical services, but their importance lies in their implication for our understanding of the biology of ASD, and the penetrance and expression of the underlying genes.

We performed extensive genetic analyses including whole genome sequencing in an individual with ASD and his family. We identified CNV deletions involving *NRXN1* and *MBD5* in the proband, but also in his father and sister, neither of whom had evidence of any clinically overt brain-related phenotype. *NRXN1* and *MBD5* are implicated in ASD, ID and other neuropsychiatric disorders^{12,13,22,23}, and functional mutations of either gene might be expected to have phenotypic consequences. We noted other variants of potential relevance to the ASD phenotype. This family illustrates that mutations anticipated to be highly penetrant may in fact be less so, and at times, apparently without phenotypic consequence.

Results

Clinical characteristics of family

The proband (003) (Figure 1) was diagnosed with attention deficit hyperactivity disorder (ADHD) at age 3 years and with ASD at age 5 years through a specialty ASD clinic. His mother and father were aged 33 and 34 years, respectively, at the time of his conception, and the mother reported a medically uneventful pregnancy. She had no history of miscarriage, and the male proband, her firstborn, was born by vaginal delivery following spontaneous labor at 39 weeks gestation. Birth weight was 4054g. There were no neonatal complications, and no craniofacial dysmorphism noted. Development during the first year was normal, but by 36 months he began losing acquired language, and speech became echolalic and scripted. Although gross motor control was intact, fine motor was an additional area of early developmental difficulty. By 36 months, repetitive motor mannerisms and preoccupations become prominent. Assessment of intellectual ability and adaptive functioning were consistent with a diagnosis of intellectual disability, and in the specialty clinic an additional diagnosis of ADHD was made (Table 1). Further assessment in the clinic at the age of 5 years identified more significant socio-communicative vulnerabilities, and a diagnosis of ASD was given. At that time an IQ of 53 was recorded (verbal IQ=56, non-verbal IQ=65), and his adaptive skills were largely consistent with function in the mildly impaired range (adaptive composite=63). At age 12 years 10 months his head circumference was 57.9cm, consistent with macrocephaly.

The proband's younger sister (004) was born following an uneventful pregnancy by normal vaginal delivery. Birth weight was 3856g. She required incubation and monitoring for transient tachypnea, which resolved spontaneously, but otherwise there were no perinatal complications. Her early language and motor milestones were attained without delay. She did experience stuttering at 36 months, but otherwise exhibited no social or communicative vulnerabilities. Her cognitive function was in the superior range on the Wechsler Abbreviated Scale of Intelligence age 6 years, and she had above average expressive and receptive language skills. Her scores on the Autism Diagnostic Interview-Revised (ADI-R) and the Autism Diagnostic Observation Schedule (ADOS, module 3), both completed when she was aged 9 years, did not indicate ASD symptoms. Similarly, neither Children's Communication Checklist (CCC)²⁴ nor the child version of the Social Responsiveness Scale (SRS)²⁵ revealed any such developmental vulnerabilities.

We evaluated both parents (001 and 002) for the presence of neurocognitive vulnerabilities and neuropsychiatric diagnoses (Table 1). Both graduated high school and attained professional level employment. The SRS was not consistent with any ASD traits in either parent, although the Communication Checklist - Adult (CC-A)²⁶ indicated some maternal and paternal communication vulnerabilities, and father's score on the Reading the Mind in the Eyes Test (RMET)²⁷ was below average, suggesting some impairment in theory of mind abilities. No additional social or communication vulnerabilities were apparent, and neither parent had findings consistent with ASD. Moreover, besides maternal post-natal depression, both parents denied any neuropsychiatric history.

Genetic characterization of family

All four family members provided blood for genotyping. We initially identified hemizygous microdeletions in the chromosomal regions 2p16.3 (50,754,487-50,996,179 [hg19]) and 2q23.1 (148,851,175-149,059,335 [hg19]) in both offspring and their father. By microarray, we estimated the deletion at 2p16.3 to be ~242kb eliminating exons 6 to 16 of *NRXN1* (Figure 1). The 2q23.1 deletion was ~215kb in size, eliminating non-coding exons 2 and 3 in the 5' untranslated region (UTR) of *MBD5* (Figure 1). We validated both deletions using SYBR-Green based real-time quantitative PCR. We found no other CNVs deemed clinically significant or of uncertain clinical significance according to the American College of Medical Genetics' guidelines²⁸, in any family member.

We undertook whole genome sequencing of the proband and both parents using the BGI platform as previously described.²⁹ This validated the *NRXN1* and *MBD5* deletions. The breakpoints of the *NRXN1* deletion were further mapped to 50,754,222-51,000,379 [hg19] by Sanger sequencing, and visual inspection of BAM files mapped the *MBD5* breakpoints to 148,843,025- 149,062,962 [hg19], thereby adjusting the size of the *NRXN1* and *MBD5* deletions to ~246kb and ~220kb, respectively. There were no additional structural alterations at the breakpoints. In the proband and his father we found a missense variant (c.G418T [p.D140Y]) in *NLGN1* (an ASD risk gene) which was predicted by *in silico* algorithms to be damaging. Targeted Sanger sequencing of the unaffected sibling's DNA did not identify the variant. Finally, the proband had a *de novo* 2bp deletion (c.461_462del [p.L154fs]) involving *ASB14*. Although the mutation was predicted to lead to a frameshift of the protein, this gene

has not been associated with ASD or other neurodevelopmental disorders, to date. We identified no other rare loss-of-function or *de novo* missense SNVs this family's genomic sequences.

Prevalence and penetrance of overlapping mutations

We next examined clinical and population datasets to investigate the penetrance of the putative mutations identified. For *NRXN1* and *MBD5*, we specifically focused on CNV deletions with at least a 50% reciprocal overlap with that of the proband (hereafter termed 'overlapping CNVs'). First, we examined clinical datasets comprising individuals (N=19,237, comprising N=5,273 cases and their family members) ascertained by way of one or more different neurodevelopmental diagnoses, including ASD^{6,30}, developmental delay³¹, OCD³² and cerebral palsy (CP)¹⁹. These individuals had been genotyped on a variety of platforms, each allowing a CNV detection threshold of 10kb using 5 or more probes. Only CNVs called with two or more algorithms were considered. Thus, we identified one clinical case with an overlapping *NRXN1* CNV (chr2: 50,761,808-51,037,134 [hg19]), and two clinical cases with overlapping *MBD5* CNVs (chr2: 148,787,060- 149,106,568 and 148,842,503-149,059,335 [hg19]) from a total of 6 and 7 exon-impacting *NRXN1* and *MBD5* CNVs respectively. All three individuals have developmental delay but no further phenotype information was available. We next examined population datasets, comprising samples genotyped on the Illumina 2.5M platform (KORA and COGEND)^{33,34} and Illumina 1M platform (WTCCC, SAGE, ONC and HABC)^{35,36,37}, giving rise to a total sample size of 13,871. A CNV detection threshold of 30kb was employed using a minimum of five probes. We considered all CNVs called by two or more algorithms, identifying from this pooled dataset one *NRXN1* CNV and one *MBD5* CNV from a total of 61 (6 exonic) and 19 (7 exonic) *NRXN1* and *MBD5* CNV deletions, respectively. Consequently, there was no statistical evidence for a greater prevalence of overlapping *NRXN1* or *MBD5* CNVs amongst cases than among controls.

We also considered overlapping CNVs recorded in DECIPHER - a clinician-submitted sample of 21,688 individuals with identified phenotypes and validated CNVs.⁸ Of this sample, eight individuals had overlapping *NRXN1* CNVs, and one an overlapping *MBD5* CNV (Figure 2). Similarly, the International Standards for Cytogenetic Arrays (ISCA) clinical database³⁸ included 11 overlapping *NRXN1* CNVs and 8 overlapping *MBD5* CNVs. The phenotypes described among these 19 individuals all included ID with an additional diagnosis of ASD in five. Among these CNVs, DECIPHER inheritance pattern is described as *de novo* for the one *MBD5* deletion, and variable for the *NRXN1* deletions (*de novo* for 3, inherited for 3 and unknown for 2).

We also examined our whole genome sequenced ASD families (comprising N=5,205 probands, siblings and parents, see methods) for any additional individuals with damaging *NLGN1* variants. We found overlapping variants in three individuals, two of with ASD, and one an unaffected father. Exome Aggregation Consortium (ExAC)³⁹, a data set which spans 60,706 unrelated individuals sequenced as part of various disease-specific and population genetic studies, lists two individuals with an overlapping mutation.

Discussion

In the family described here, CNV deletions in two ASD-implicated genes, *NRXN1* and *MBD5*, are shared by an ASD proband, his typically developing sibling, and their unaffected father. Based on extensive literature⁴⁰, our clinical diagnostic laboratory would have assigned either one of these CNVs as ‘likely pathogenic’ for ASD. In addition, WGS identified a missense variant in the putative ASD gene *NLGN1* that was paternally transmitted to only the proband. This is of interest for the known interaction between the NLGN1 and NRXN1 proteins⁴¹, and in this family the missense mutation was predicted to be damaging. A *de novo* frameshift variant in *ASB14* was also identified in the proband, and although not brain expressed, we cannot rule out an etiological role for this mutation.

NRXN1 is one of three neurexin scaffolding proteins; aberrations in its gene are strongly associated with cognitive, neurodevelopmental and neuropsychiatric phenotypes.^{12,13} Deletions in *NRXN1* are relatively common in ASD (0.45%) and ID (0.12%) cohorts¹², but much less frequently seen in population based surveys (~0.02%).¹² Other studies have also highlighted the fact that deletions can occur in apparently healthy individuals (¹² and references therein). An estimate of penetrance for all copy number variants for schizophrenia and neurodevelopmental phenotypes for NRXN1 is 33%⁴². The ExAC constraint metric for this gene is -0.13³⁹, which is consistent with tolerance to copy number variation. However, its low burden of mutations in the healthy population coupled with high expression levels (mRNA and protein) results in its categorization as critical to brain development⁴³. *MBD5* encodes a methylated-DNA binding protein, which has previously been described in the literature as highly penetrant, characterized in all cases by intellectual disability, ASD and, more variably, craniofacial abnormalities.^{22,23} Most of the cases described so far have been *de novo*, although transmission is sometimes unknown. In the present family, the proband’s phenotype is largely consistent with previous descriptions connected with mutations of NRXN1 and MBD5^{12,13,22,23}, characterized by moderate ID and ASD in the absence of dysmorphism. The ExAC constraint measure for *MBD5* is 0.69³⁹, indicating some degree of intolerance to variation, although it is not classified critical to brain development⁴³.

Beyond the gene *per se*, the exact genomic location of a CNV may be important in the determination of functional aberration and phenotypic consequence. In this family, the 2p16.3 deletion impacted exons 6–16, and our analysis indicated that overlapping CNVs were rare among clinical cases or population controls. Crucially, overlapping CNVs were not enriched among the cases compared with controls. We speculate that this hemizygous deletion impacting only exons 6–16 may be less penetrant than others reported for this gene. Indeed, most clinical cases seem to cluster around exons 1–4 at the 5’ end of the gene, with deletions that impact the subsequent exons showing evidence of lower penetrance.¹³ This may be due to influence of the lncRNA AK127244 adjacent to the promoter of alpha-*NRXN1*.¹³ Confounding the argument of lower penetrance, however, is the 20 individuals with overlapping CNVs in ISCA, DECIPHER, and the other clinical datasets we examined with variable but largely overlapping phenotypes.

Similarly, overlapping *MBD5* deletions were not enriched among clinical cases, although mutations described largely overlap with that of our patient, impacting one or more exons in the 5' UTR. Two additional individuals in our clinical dataset, with developmental delay, had identical *MBD5* CNVs. Although these exons are not translated, all 5' UTR deletions result in haploinsufficiency, with peripheral expression of *MBD5* approximately halved.²³ Many cases described, including the one in DECIPHER, have *de novo* mutations.

Finally, *NLGN1*, is of potential interest, forming complexes with *NRXN1*, and implicated in both structural integrity and function of synapses.⁴⁴ While the function of *NLGN1* has been well described, particularly in the context of its interaction with *NRXN1*, the phenotype associated with gene mutations has not been elaborated. One genome-wide CNV analysis of ASD cases identified enrichment for CNVs in *NLGN1* compared with population controls⁴⁵, and another provided evidence of association between common variants in *NLGN1* and schizophrenia in the Han Chinese population⁴⁶. However, the penetrance of the mutation described in our family is unclear in light of the identification of a similar number of cases in our clinical dataset and ExAC.

Complexity of the etiology underlying ASD is well demonstrated in families like that presented here, where the most advanced genomic technologies have provided a comprehensive genetic profile, and the variants detected are shared among family members with and without ASD. We are reminded to acknowledge what remains unknown (e.g., the role of environmental factors and epigenetic regulation) and not to overstate the causal impact of variants. We are spurred to investigate the mechanisms whereby genotype can lead to phenotype in some, but not others. Various, this may be a function of the type of variant (i.e. loss-of-function, missense, deletion), its location (i.e. exonic, intronic, regulatory region, intergenic), or the resultant transcript/isoform⁹. We must, however, move from a genetic to a genomic perspective, recognizing that no gene or gene product functions in isolation. Indeed, each of the three genetic aberrations in this family might have been deemed sufficient to explain ASD in the proband, but all were non-penetrant in other family members. For future investigations related to penetrance, we recommend the approach of comparing only highly overlapping CNVs, rather than all CNVs involving the same gene. A true estimate of penetrance will require a more robust approach than ours, with access to comprehensive control data from pedigrees⁴⁸ and large datasets.⁴⁹ For example, although many variants may be very rare in the population, those that are inherited can be tracked through family members and their segregation with disease phenotype examined. This allows a quantification of their pathogenicity to be determined⁴⁸, as well as a Bayesian Factor to be estimated, which can be used as a test of the hypothesis of causality by examining its distribution under the hypothesis of neutrality⁵⁰. Although not a direct measurement of penetrance per se, this approach does go some way to quantifying the probability of disease in association with particular mutations.

Context is crucial. The impact of the wider genomic landscape, including the epigenome, along with factors such as age, sex and the early environmental milieu, will undoubtedly contribute to a person's evolving phenotypes. The rich tapestry of protein interactions at the cellular level translate more proximally into endophenotypes, which, rather than global diagnostic fields, are the more internal phenotypic elements or markers revealed by specific

measures. In the family presented here, the father's vulnerabilities decoding emotions from facial stimuli may, for example, represent such an endophenotype. The 'vulnerable brain' may be impacted by another factor to result in the full expression of a clinical phenotype. These mechanisms will become untangled as a result of large, epidemiological studies, but also the accumulation of evidence from case studies such as this one.

Methods

The family described was recruited as part of ongoing studies of the genetics of ASD (www.mss.ng).⁵¹ This dataset currently comprises ~2,500 probands with ASD and, in most cases, both parents. ASD diagnoses are made by expert clinicians using the Autism Diagnostic Interview (ADI-R) and the Autism Diagnostic Observation Schedule (ADOS) combined with clinical judgment. Probands and their available first degree relatives have all undergone phenotyping as described below, and have provided DNA for the identification of CNVs and SNVs (see below). All data were collected following informed consent from participants or substitute decision makers, and the study is conducted with approval from respective local research ethics boards. The family described in detail in this paper has provided specific written consent for their data to be shared in the scientific literature in the form of this case report.

Phenotypes

In addition to the ADI-R and ADOS-G, the proband underwent a cognitive assessment using the Wechsler Preschool and Primary Scale of Intelligence (WPPSI) and a language assessment with the Oral and Written Language Scales (OWLS-II). Additionally, measures of the proband's adaptive functioning (Vineland Adaptive Behavior Scales-II) was completed with his parents. Both parents were assessed using the Peabody Picture Vocabulary Test (PPVT) and the Reading the Mind in the Eyes Test (RMET; a measure of theory of mind).²⁷ In addition, both parents completed the Communication Checklist - Adult (CC-A²⁶), and the Social Responsiveness Scale (SRS)²⁵. The proband's sibling underwent assessment with the Wechsler Abbreviated Scale of Intelligence (WASI-II), the ADI and the ADOS. Her parents completed a measure of her social communication (Children's Communication Checklist (CCC)²⁴). Height, weight, and head circumference were measured for each family member.

Genotypes

We called CNVs as previously described.³¹ Briefly, four different CNV calling algorithms were used to annotate high-confidence CNVs. These included the Affymetrix Chromosome Analysis Suite (ChAS), iPattern⁵², Nexus⁵³, and Partek.⁵⁴ A stringent set of variants was defined for further analyses. This set included variants detected by one or both of ChAS or iPattern, and if detected by only one of these, then also by one of Nexus or Partek. For stringent calls on the X chromosome, we required calling by both ChAS and iPattern. Only CNVs with five probes or more on the array were called, with a minimum length cutoff of 30kb. CNVs were filtered to prioritize rare variants that occurred with a frequency of <0.1% in control samples (N=9,611). For the purpose of filtering, CNVs with >50% reciprocal overlap were deemed overlapping. We also removed all CNVs that had >70% overlap with a

known segmental duplication. We further restricted our list to those with more than 75% overlap with copy number stable regions, according the stringent CNV map of the human genome.⁵⁶ All CNVs described in the index family have been validated using the SYBR green based quantitative PCR method. The genomic coordinates presented in this paper are based on the February 2009 Human Genome Build (GRCh37/hg19).

The proband and both parents also underwent whole genome sequencing (WGS) by BGI as described previously.²⁹ All identified variants were subsequently validated by Sanger sequencing. In addition, the unaffected sibling underwent targeted Sanger sequencing. We annotated the Identified SNVs, and prioritized those likely to be damaging using a filtering algorithm. This captured all those SNVs that were rare (< 1% minor allele frequency), and involved loss of function (nonsense, splice site and frameshift), and damaging *de novo* missense mutations (damaging as evidenced by two of the following criteria: SIFT < 0.05, Polyphen2 < 0.95, CADD < 15, Mutation Assessor score < 2, placental mammal PhyloP < 2.4 and vertebrate PhyloP < 4).²⁹

Data availability

Sequence data has been deposited at the European Genome–phenome Archive (EGA, <http://www.ebi.ac.uk/ega/>), which is hosted by the EBI, under accession number EGAS00001001023. The data, as part of a larger autism whole-genome sequencing project, is also available in the MSSNG database on Google Genomics (for access see <http://www.mss.ng/researchers>).

Acknowledgments

The authors thank the family described in this paper for supporting this publication. We also thank all other families described herein for their contribution to our ongoing studies of the genetics of ASD. We thank The Centre for Applied Genomics (TCAG), which is funded by Genome Canada and the Ontario Genomics Institute, Canada Foundation for Innovation (CFI), and the Ontario Research Fund of the Government of Ontario. MWS is supported by a Clinical Investigatorship Award from the Canadian Institutes of Health Research (CIHR) Institute of Genetics; S.W.S. holds the GlaxoSmithKline-CIHR Chair in Genome Sciences at the University of Toronto and The Hospital for Sick Children. This study makes use of data generated by the DECIPHER community and the MSSNG-Autism Speaks Whole Genome Autism Sequencing project. A full list of centres whom contributed to the generation of the data is available from <http://decipher.sanger.ac.uk> and via email from decipher@sanger.ac.uk. Funding for the project was also provided by the Wellcome Trust, Autism Speaks and CIHR.

References

1. Anagnostou E, et al. Autism spectrum disorder: advances in evidence-based practice. *CMAJ*. 2014; 186:509–19. [PubMed: 24418986]
2. Centers for Disease Control and Prevention (CDC). Prevalence of autism spectrum disorder among children aged 8 years - autism and developmental disabilities monitoring network, 11 sites, United States, 2010. *MMWR Surveill Summ*. 2014; 63:1–21.
3. Buescher AV, Cidav Z, Knapp M, Mandell DS. Costs of autism spectrum disorders in the United Kingdom and the United States. *JAMA Pediatr*. 2014; 168:721–8. [PubMed: 24911948]
4. Devlin B, Scherer SW. Genetic architecture in autism spectrum disorder. *Curr Opin Genet Dev*. 2012; 22(3):229–237. [PubMed: 22463983]
5. Geshwind D, State M. Gene-hunting in autism spectrum disorder: on the path to precision medicine. *Lancet Neurol*. 2015; 14:1109–20. [PubMed: 25891009]
6. Pinto D, et al. Convergence of genes and cellular pathways dysregulated in autism spectrum disorders. *Am J Hum Genet*. 2014; 94:677–94. [PubMed: 24768552]

7. Cooper DN, Krawczak M, Polychronakos C, Tyler-Smith C, Kehrer-Sawatzki H. Where genotype is not predictive of phenotype: towards an understanding of the molecular basis of reduced penetrance in human inherited disease. *Hum Genet.* 2013; 132:1077–130. [PubMed: 23820649]
8. Firth HV, et al. DECIPHER: database of chromosomal imbalance and phenotype in humans using ensembl resources. *Am J Hum Genet.* 2009; 84:524–533. [PubMed: 19344873]
9. DeRubeis S, Buxbaum JD. Genetics and genomics of autism spectrum disorder: embracing complexity. *Hum Mol Gen.* 2015:1–8.
10. Hanson E, et al. The cognitive and behavioral phenotype of the 16p11.2 deletion in a clinically ascertained population. *Biol Psychiatry.* 2015; 77:785–793. [PubMed: 25064419]
11. Guilmatre A, Huguet G, Delorme R, Bourgeron T. The emerging role of SHANK genes in neuropsychiatric disorders. *Dev Neurobiol.* 2014; 74:113–22. [PubMed: 24124131]
12. Dabell MP, et al. Investigation of NRXN1 deletions: clinical and molecular characterization. *Am J Med Genet A.* 2013; 161A:717–31. [PubMed: 23495017]
13. Lowther C, et al. Molecular characterization of NRXN1 deletions from 19,263 clinical microarray cases identifies exons important for neurodevelopmental disease expression. *Genet Med.* 2016; Epub ahead of print. doi: 10.1038/gim.2016.54
14. Szatmari P, et al. Mapping autism risk loci using genetic linkage and chromosomal rearrangements. *Nat Genet.* 2007; 39(3):319–327. [PubMed: 17322880]
15. Marshall C, et al. Structural variation of chromosomes in autism spectrum disorder. *Am J Hum Genet.* 2008; 82(2):477–88. [PubMed: 18252227]
16. Cook EH Jr, Scherer SW. Copy-number variations associated with neuropsychiatric conditions. *Nature.* 2008; 455(7215):919–23. [PubMed: 18923514]
17. Lee C, Scherer SW. The clinical context of copy number variation in the human genome. *Expert Rev Mol Med.* 2010; 12:e8. [PubMed: 20211047]
18. Salyakina D, et al. Copy number variants in extended autism spectrum disorder families reveal candidates potentially involved in autism risk. *PLoS One.* 2011; 6:e26049. [PubMed: 22016809]
19. Oskoui M, et al. Clinically relevant copy number variations detected in cerebral palsy. *Nat Commun.* 2015; 6:7949. [PubMed: 26236009]
20. Piven J. The broad autism phenotype: a complementary strategy for molecular genetic studies of autism. *Am J Hum Genet.* 2001; 105(1):34–35.
21. Bolton P, et al. A case-control family history study of autism. *J Child Psychol Psychiatry.* 1994; 35(5):877–900. [PubMed: 7962246]
22. Hodge JC, et al. Disruption of MBD5 contributes to a spectrum of psychopathology and neurodevelopmental abnormalities. *Mol Psychiatry.* 2014; 19:368–79. DOI: 10.1038/mp.2013.42 [PubMed: 23587880]
23. Talkowski ME, et al. Assessment of 2q23.1 microdeletion syndrome implicates MBD5 as a single causal locus of intellectual disability, epilepsy, and autism spectrum disorder. *Am J Hum Genet.* 2011; 89:551–63. [PubMed: 21981781]
24. Bishop, DVM. *The Children's Communication Checklist version 2 (CCC-2)*. Psychological Corporation; 2003.
25. Constantino, JN., Gruber, CP. *The Social Responsiveness Scale Manual*. Western Psychological Services; 2005.
26. Whitehouse, AJO., Bishop, DVM. *Communication Checklist Adult*. London: The Psychological Corporation; 2009.
27. Baron-Cohen S, Jolliffe T, Mortimore C, Robertson M. Another advanced test of theory of mind: evidence from very high functioning adults with autism or Asperger syndrome. *J Child Psychol Psychiatry.* 1997; 38:813–22. [PubMed: 9363580]
28. Richards S, et al. Standards and guidelines for the interpretation of sequence variants: a joint consensus recommendation of the American College of Medical Genetics and Genomics and the Association for Molecular Pathology. *Genet Med.* 2015; 17:405–423. [PubMed: 25741868]
29. Yuen RK, et al. Genome-wide characteristics of de novo mutation in autism. *npj Genom Med.* 2016; 1 Article number: 16027.

30. Pinto D, et al. Functional impact of global rare copy number variation in autism spectrum disorders. *Nature*. 2010; 466:368–372. [PubMed: 20531469]
31. Uddin M, et al. A high-resolution copy-number variation resource for clinical and population genetics. *Genet Med*. 2014; 17:747–752. [PubMed: 25503493]
32. Gazzellone MJ, et al. Uncovering Obsessive-Compulsive Disorder risk genes using a high-resolution genome-wide CNV approach. *J Neurodev Dis*. (in press).
33. Verhoeven VJ, et al. Genome-wide meta-analyses of multiancestry cohorts identify multiple new susceptibility loci for refractive error and myopia. *Nat Genet*. 2013; 45:314–8. [PubMed: 23396134]
34. Bierut LJ, et al. Novel genes identified in a high-density genome wide association study for nicotine dependence. *Hum Mol Genet*. 2007; 16:24–35. [PubMed: 17158188]
35. Bierut LJ, et al. A genome-wide association study of alcohol dependence. *Proc Natl Acad Sci U S A*. 2010; 107:5082–7. [PubMed: 20202923]
36. Cotterchio M, et al. Red meat intake, doneness, polymorphisms in genes that encode carcinogen-metabolizing enzymes, and colorectal cancer risk. *Cancer Epidemiol Biomarkers Prev*. 2008; 17:3098–107. [PubMed: 18990750]
37. Coviello AD, et al. A genome-wide association meta-analysis of circulating sex hormone-binding globulin reveals multiple Loci implicated in sex steroid hormone regulation. *PLoS Genet*. 2012; 8:e1002805. [PubMed: 22829776]
38. Riggs ER, et al. Towards an evidence based process for the clinical interpretation of copy number variation. *Clin Genet*. 2012; 81:403–412. [PubMed: 22097934]
39. Lek M, et al. Analysis of protein-coding genetic variation in 60,706 humans. *Nature*. 2016; 536:285–291. [PubMed: 27535533]
40. Tammi K, Marshall CR, Walker S, Kaur G, et al. Molecular Diagnostic Yield of Chromosomal Microarray Analysis and Whole-Exome Sequencing in Children With Autism Spectrum Disorder. *JAMA*. 2015; 314:895–903. [PubMed: 26325558]
41. Sudhof TC. Neuroligins and neuroligins link synaptic function to cognitive disease. *Nature*. 2008; 455:903–11. [PubMed: 18923512]
42. Kirov G, et al. The penetrance of copy number variations for schizophrenia and developmental delay. *Biol Psychiatry*. 2014; 75:378–385. [PubMed: 23992924]
43. Uddin M, et al. Indexing effects of copy number variation on genes involved in developmental delay. *Sci Rep*. 2016; 6:28663. [PubMed: 27363808]
44. Reissner C, Klose M, Fairless R, Missler M. Mutational analysis of the neuroligin/neuroligin complex reveals essential and regulatory components. *Proc Natl Acad Sci U S A*. 2008; 105:15124–9. [PubMed: 18812509]
45. Glessner JT, et al. Autism genome-wide copy number variation reveals ubiquitin and neuronal genes. *Nature*. 2009; 459:569–73. [PubMed: 19404257]
46. Zhang Z, et al. Evidence for Association of Cell Adhesion Molecules Pathway and NLGN1 Polymorphisms with Schizophrenia in Chinese Han Population. *PLoS One*. 2015; 10:e0144719. [PubMed: 26674772]
47. Chen R, et al. Analysis of 589,306 genomes identifies individuals resilient to severe Mendelian childhood diseases. *Nature Biotech*. 2016; 34(5):531–538.
48. Jarvik GP, Browning BL. Consideration of Cosegregation in the Pathogenicity Classification of Genomic Variants. *Am J Hum Genet*. 2016; 98:1077–1081. [PubMed: 27236918]
49. Minikel EV, et al. Quantifying prion disease penetrance using large population control cohorts. *Sci Transl Med*. 2016; 8:322ra9.
50. Thompson DT, Easton DF, Goldgar DE. A full-likelihood method for the evaluation of causality of sequence variants from family data. *Am J Hum Genet*. 2003; 73:652–655. [PubMed: 12900794]
51. Yuen RKC, et al. Whole-genome sequence based resource for autism research. *Nat Neurosci*. 2017; 20:602–611. [PubMed: 28263302]
52. Pinto D, et al. Comprehensive assessment of array-based platforms and calling algorithms for detection of copy number variants. *Nat Biotechnol*. 2011; 29:512–20. DOI: 10.1038/nbt.1852 [PubMed: 21552272]

53. Darvishi K. Application of Nexus copy number software for CNV detection and analysis. *Curr Protoc Hum Genet.* 2010:4–14.
54. Downey T. Analysis of a Multifactor Microarray Study Using Partek Genomics Solution. *Methods Enzymol.* 2006; 411:256–270. [PubMed: 16939794]
55. Zarrei M, MacDonald JR, Merico D, Scherer SW. A copy number variation map of the human genome. *Nat Rev Genet.* 2015; 16:172–183. [PubMed: 25645873]

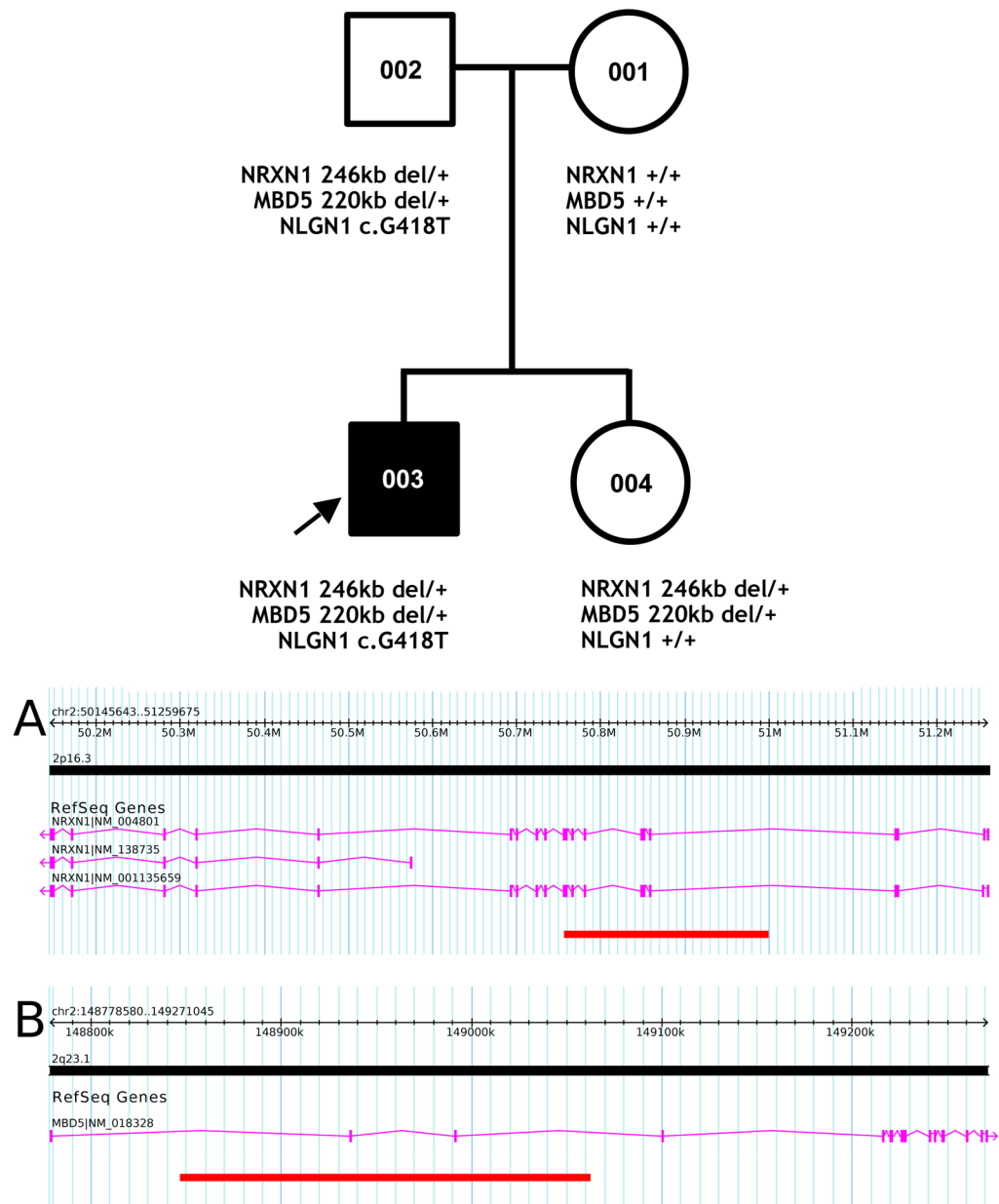


Figure 1. Pedigree with microarray results and annotated *NRXN1* (A) and *MBD5* (B) CNVs



Figure 2. CNVs overlapping the family's *NRXN1* (A) and *MBD5* (B) CNV deletion from clinical ('clinical') and population ('controls') datasets, and DECIPHER and ClinGen Family 1 refers to family described in the text

Table 1

Summary of family's genotypes and phenotypes

	-001	-002	-003	-004
Sex	F	M	M	F
Microarray	<i>NRXN1</i> +/- <i>MBD5</i> +/-	<i>NRXN1</i> del/+ <i>MBD5</i> del/+	<i>NRXN1</i> del[pat]/+ <i>MBD5</i> del[pat]/+	<i>NRXN1</i> del[pat]/+ <i>MBD5</i> del[pat]/+
WGS	-	<i>NLGNI</i> , c.G418T [p.D140Y]	ASB14, c.461_462del [p.L154fs] <i>NLGNI</i> , c.G418T [p.D140Y]	Targeted Sanger: <i>NLGNI</i> +/-
Clinical diagnosis	None	None	ASD, ID, ADHD	None
IQ	NA	NA	WPPSI-III FSIQ=53, VIQ=56, NVIQ=65	WASI FSIQ=121, VIQ=124, NVIQ=112
Vineland Adaptive Behavior Scales (comm=communication, daily=daily living)	NA	NA	Comm 3%ile, daily 1%ile, social <1%ile	NA
Morphology (HC=head circumference)	HC=56 cm, height=166.4cm, weight=60.3kg (age 45y)	HC=58 cm, height=182.9cm, weight=83.9kg (age 44y)	HC=57.9cm, Height=166.5cm, weight=58.1kg (age 12:10)	HC=51 cm, height=106.7cm, Weight=17.7 kg (age 6:6)
Medical	Nil	Nil	Nil	Nil
Language	CC-A : Language 42%ile, pragmatics 7%ile, social engagement 7%ile	CC-A : Language 7%ile, pragmatics 9%ile, social engagement 19%ile	OWLS : Standard score=50 (<0.1%ile) CCC : GCC=30 (1%ile)	CCC : GCC=71 (32%ile)
SRS	T-score=61 (normal)	T-score=43 (normal)	NA	T score=45 (normal)
PPVT	109 (73%ile)	101 (%ile)	86 (9%ile, aged 7:4)	73 (86%ile, aged 3:7)
RMET	31 (86% correct)	19 (53% correct)	NA	NA

NA=not available; CC-A=communication checklist - adult; CCC=children's communication checklist; OWLS=oral and written language scales; SRS=social responsiveness scale; PPVT=Peabody Picture Vocabulary Test; RMET=Reading the Mind in the Eyes Test.