

Published in final edited form as:

Cancer Prev Res (Phila). 2021 August 01; 14(8): 811–822. doi:10.1158/1940-6207.CAPR-20-0620.

The costs and benefits of risk-stratification for colorectal cancer screening based on phenotypic and genetic risk: a health economic analysis

Chloe Thomas,

School of Health and Related Research, University of Sheffield, Regent Court, Sheffield S1 4DA

Olena Mandrik,

School of Health and Related Research, University of Sheffield, Regent Court, Sheffield S1 4DA

Catherine L. Saunders,

The Primary Care Unit, Department of Public Health and Primary Care, University of Cambridge, School of Clinical Medicine, Box 113 Cambridge Biomedical Campus, Cambridge CB2 0SR

Deborah Thompson,

Centre for Cancer Genetic Epidemiology, University of Cambridge, Cambridge CB2 0SR

Sophie Whyte,

School of Health and Related Research, University of Sheffield, Regent Court, Sheffield S1 4DA

Simon Griffin,

The Primary Care Unit, Department of Public Health and Primary Care, University of Cambridge, School of Clinical Medicine, Box 113 Cambridge Biomedical Campus, Cambridge CB2 0SR

Juliet A. Usher-Smith

The Primary Care Unit, Department of Public Health and Primary Care, University of Cambridge, School of Clinical Medicine, Box 113 Cambridge Biomedical Campus, Cambridge CB2 0SR

Abstract

Population-based screening for colorectal cancer (CRC) is an effective and cost-effective way of reducing CRC incidence and mortality. Many genetic and phenotypic risk factors for CRC have been identified, leading to development of CRC risk scores with varying discrimination. However, these are not currently used by population screening programmes. We perform an economic analysis to assess the cost-effectiveness, clinical outcomes and resource impact of using risk-stratification based on phenotypic and genetic risk, taking a UK National Health Service

Correspondence to: Chloe Thomas.

Corresponding author: Dr. Chloe Thomas, School of Health and Related Research, University of Sheffield, Regent Court, 30 Regent Street, Sheffield S1 4DA, +44 (0) 114 222 0785, c.thomas@sheffield.ac.uk.

Conflicts of Interest

All authors declare that the only support for the submitted work was from the funders mentioned in the acknowledgements. The funders did not have any influence over the choice of analysis for publication or the findings of the analysis. The decision to submit the article for publication was made entirely independently of the funders. Since completing her contribution to this paper, DT has left Cambridge University and is now employed by Genomics plc. All other authors have no financial relationships with any organisations that might have an interest in the submitted work in the previous three years and no other relationships or activities that could appear to have influenced the submitted work.

perspective. Biennial faecal immunochemical test (FIT), starting at an age determined through risk-assessment at age 40, was compared to FIT screening starting at a fixed age for all individuals. Compared with inviting everyone from age 60, using a risk score with area under the receiver operating characteristic curve of 0.721 to determine FIT screening start age, produces 418 QALYs, costs £247,000, and results in 218 fewer CRC cases and 156 fewer CRC deaths per 100,000 people, with similar FIT screening invites. There is 96% probability that risk-stratification is cost-effective, with net monetary benefit (based on £20,000 per QALY threshold) estimated at £8.1m per 100,000 people. The maximum that could be spent on risk-assessment and still be cost-effective is £114 per person. Lower benefits are produced with lower discrimination risk scores, lower mean screening start age, or higher FIT thresholds. Risk stratified screening benefits men more than women. Using risk to determine FIT screening start age could improve the clinical outcomes and cost-effectiveness of CRC screening without using significant additional screening resources.

Introduction

Colorectal cancer (CRC) is the third most common diagnosed cancer in the world, accounting for 1.8 million new cases and 0.8 million deaths in 2018 (1). Screening is an effective way of reducing both mortality and incidence, by identifying CRC at earlier stages that are easier to treat and identifying and removing cancerous precursors (adenomas). Many high-income countries have chosen to screen their populations using the biennial faecal immunochemical test (FIT) (2). The age at which FIT screening starts varies between countries with many starting at age 50 (e.g. Italy, France & Scotland) (2). In England FIT screening currently starts at age 60, despite studies indicating that reducing the start age to 50 would be highly cost-effective (3). Whilst the intention is to reduce screening start age to 50 eventually, resource constraints mean that there is currently insufficient capacity (at the point of follow-up colonoscopy) to do this (4).

Whilst age is the most important risk factor for CRC, many other genetic and phenotypic risk factors for CRC have been identified and quantified (5–8). In rare cases individuals are at particularly high risk for CRC, for example if they have monogenic conditions such as Lynch syndrome and familial adenomatous polyposis (9). Once identified, such individuals should receive specialist surveillance and are generally not included in population screening (10). For most individuals, CRC risk is due to a combination of a large number of risk and protective factors each contributing a very small amount. These include lifestyle factors such as alcohol consumption, physical activity and diet (5), polygenic risk factors, of which more than 120 have been identified so far (7), and other characteristics such as family history and ethnicity, which are likely to be based on a combination of genetic and environmental risk (6,8). Using various risk factors, a large number of different CRC risk-prediction models have been developed throughout the world (11,12). Use of risk scores to determine who should be screened, and when, could result in better disease outcomes and more efficient targeting of scarce resources. Despite this, risk score-based screening has not been evaluated in practice and no current population-based screening programmes use risk factors other than age to determine eligibility criteria.

Whilst risk-based screening has not been evaluated in clinical trials, several recent modelling studies have examined the potential cost-effectiveness of risk-based strategies (13–15). However, these analyses have several limitations. Firstly, they have been based on hypothetical risk scoring and have not evaluated or compared the many pre-existing risk scores to determine whether any of these perform adequately. Secondly, none have evaluated risk scores that combine both genetic and modifiable phenotypic risk factors. Thirdly, existing studies have generally not examined the benefits of risk stratification in the context of screening resource constraints that operate in practice and that prevent more cost-effective strategies using more screening resources, from being implemented.

Previously we reviewed published risk scores and externally validated them against UK Biobank data to determine which scores have the best discrimination within a UK population (16,17). The aim of the analysis presented here was to use the best-performing risk scores including phenotypic and genetic risk as the basis for determining the age at which FIT screening should start, then to estimate the cost-effectiveness, clinical benefits and resource impact of risk-stratification, compared with current screening strategies, from the English NHS perspective.

Materials and Methods

A new individual patient-level microsimulation model was developed in R programming language: Microsimulation Model in Cancer of the Bowel (MiMiC-Bowel). This model simulates the life course of patients who each have a set of individual characteristics that determines their cancer risk and response to screening and surveillance. Patient baseline characteristics including phenotypic CRC risk factors are taken from the 6,787 individuals aged 30 or over in the Health Survey for England (HSE) 2014 (18). For this analysis, all individuals were set to age 30 at the beginning of the model and were then followed over time within the microsimulation. The model has a lifetime horizon and takes an NHS perspective.

Model Background

A brief summary of the model is presented here, with more detailed explanation available in an online technical methods document (<http://eprints.whiterose.ac.uk/162743/>). MiMiC-Bowel is comprised of several modules; a core natural history module, plus modules for symptomatic diagnosis, screening and surveillance. In the natural history module, all patients are assumed to have normal colorectal epithelium at age 30 and patients then travel through nine different health states representing normal epithelium, low and high-risk adenoma (definitions based on British Society of Gastroenterology [BSG] guidelines (10)), CRC stages A to D and death from CRC or other causes. The serrated adenoma pathway is represented by a transition directly from normal epithelium to CRC stage A. Transitions between health states were derived through calibration to find parameter sets that enabled the model to replicate CRC incidence and prevalence of adenomas and undiagnosed CRC by age and sex in the absence of CRC screening (19–23). A full description of model calibration and tests for model validity are available online (<http://eprints.whiterose.ac.uk/171343/>). Transitions to CRC death were calculated from English CRC survival data from

2013-2017, which varies by age, sex, stage at diagnosis and year from diagnosis (6). Other-cause mortality was based on 2016-2018 English life tables by age and sex (24), from which known CRC mortality from 2018 death certificate data was subtracted (25).

Patients with CRC may be diagnosed symptomatically or through screening. Modelled screening procedures are based on the English Bowel Cancer Screening Programme (BCSP), with positive results at FIT leading to further investigation by colonoscopy or computed tomography colonography (CTC). Patients found to have adenomas undergo polypectomy and BSG guidelines are implemented in the model for surveillance following adenoma removal (10). Complications of endoscopy including perforation, major bleed and mortality are included in the model (26,27). Uptake of screening and follow-up procedures varies by age, sex, socioeconomic deprivation and prior response to screening in line with published data (28,29), but is assumed not to be altered directly by risk-stratification. The sensitivity and specificity of FIT screening, calculated by dividing screening detection rates by modelled disease prevalence, also varies by age, sex, FIT threshold, underlying disease status and screening round (Supplementary Table 1) (28,30,31). All modelled procedures are assumed to incur costs and resource use, with CRC treatment costs varying by age, stage at diagnosis and year from diagnosis (32). All patients have an individual health-related quality-of-life which comes originally from HSE 2014 (18), but then is subject to decrements based on age, CRC diagnosis and endoscopy complications. Potential psychological impacts of screening are not included.

Modelling stratified risk

Modelled phenotypic risk factors include body mass index (BMI), alcohol consumption, smoking, physical activity and ethnicity. These were chosen as they are available from HSE 2014 for each modelled individual (18) and their relative risk for CRC has been reported (5,6). Baseline values for lifestyle risk factors, and changes as individuals age, were incorporated in the model using a percentile method based on HSE 2014 data. Family history of CRC was not available from HSE 2014 but important for stratified CRC risk analysis (8). Both a 'known' (age-dependent) and 'actual' (age-independent) family history was assigned randomly to modelled individuals, based on proportions of the population with a first-degree relative with CRC at different ages in the UK Biobank population (33), with risk depending upon the 'actual' family history.

Genetic data was incorporated by assuming that an individual's true genetic risk of CRC was represented by the 120 risk alleles associated with CRC, identified to date from Huyghe et al (2019) (7). Each modelled individual was randomly assigned each of these risk alleles, taking into account allele frequency obtained from UK Biobank data (33) and correlations between alleles on the same chromosome obtained from LDlink (34). Phenotypic and genetic risk factors were assumed to act independently on CRC risk, although in practice there are likely to be some correlations between them, particularly for family history and ethnicity. Phenotypic and genetic factors were combined for each person within the simulated population, to obtain a single individualised relative risk for CRC. These relative risks were applied to the transitions from normal epithelium to LR adenoma, representing the adenoma-carcinoma pathway, and from normal epithelium to CRC, representing the

serrated pathway. Calibration was used to adjust relative risks to ensure the expected relative amount of CRC was occurring in people with and without risk factors.

In order to model the effects of using independent published risk scores to identify individuals for screening, two risk models identified from our previous work as having good performance were incorporated into MiMiC-Bowel; the Ma phenotypic only score (10) and the Jeon genetic only score (35), in addition to a score combining the two sets of risk factors (called MaJeon in this publication). Evaluation of these scores represents an independent assessment of the performance of risk-stratified screening. The discrimination of each risk score within MiMiC-Bowel, in a population cohort risk-assessed at age 40 and then simulated over a 10-year period, was assessed using the Area Under the Receiver Operating Curve (AUROC) (Table 1 & Supplementary Figure 1). Discrimination is lower than previously found during validation against UK Biobank (16), as the impact of age predictors is absent due to use of a single-aged cohort in the model. In addition to using these independent risk scores, the performance of optimal risk scoring was also evaluated based on genes alone (the Huyghe risk score), and the combined genetic and phenotypic factors included in development of the model (Huyghe plus BMI, physical activity, alcohol consumption & smoking), with or without the additional incorporation of sex-specific risks (called 'Total Risk' and 'Total Risk + Sex' scores respectively in this manuscript). These were not independent from modelled CRC transitions, but enabled risk scores with higher discrimination to be assessed. Each risk score was adapted to enable calculation of absolute 10 year CRC risk based on Cancer Research UK CRC incidence for England (36). This enabled for example the Ma risk score, which is based on a Japanese population, to be calibrated to the English population.

Given that risk score administration costs are unknown and likely to vary considerably for different risk scores depending upon whether they require routinely gathered data, phenotypic data or genetic data, no costs were assigned to risk scoring itself. Instead, a justifiable cost analysis was carried out to determine the maximum justifiable cost of implementing risk-scoring in the population at age 40, whilst ensuring that risk scoring is still cost-effective. This is useful for policy makers thinking about using a risk stratified approach as it provides a guide as to how much could be spent on collecting risk information.

Model Analyses

The current FIT screening strategy in England (biennial FIT at a threshold of 120 μ g/g [FIT120], age 60-74) was chosen as the basecase comparator. Three additional comparators were included; one with a start age of 50 instead of 60, a second using FIT20 rather than FIT120 as the threshold, and a third in which screening uptake was reduced by 25%, as the impact of risk stratification on uptake is unknown. The intention is for screening start age to fall to 50 eventually within the BCSP, and then for FIT threshold to be reduced when resources allow, and many other European countries currently start screening at age 50 and/or use a much lower FIT threshold than England.

Risk-assessment was assumed to be carried out in all modelled individuals at age 40 using each of the risk scores described above. Age at first FIT invite was calculated for each

individual as the age at which they would be expected to reach a particular risk threshold given their risk at age 40; the risk threshold was defined separately for each risk score to ensure that population mean screening start age allocated using that score, approximated comparator start age (Table 1 & Supplementary Figure 1). This was essential to ensure that total number of FIT screening episodes was kept at approximately the same level between comparator and intervention strategies, to ensure that any benefits of stratified screening could be attributed to the risk-stratification itself and not to reducing overall screening start age, or performing more screening overall. This is important because previous work has indicated that lowering screening start age below 60 in all individuals is cost-effective and reduces CRC incidence and mortality, but is currently not feasible in England due to resource constraints (3). Age at last FIT invite remained unchanged at 74 in all analyses.

Strategies were modelled using probabilistic sensitivity analysis (PSA), to enable parameter uncertainty to be incorporated. Discount rate was set at 3.5% for costs and QALYs in the basecase analysis as per UK National Institute of Health and Care Excellence (NICE) guidelines (37). Sensitivity analyses were carried out using alternative discount rates of 1.5% or 5%. Cost-effectiveness was measured using incremental net monetary benefit (calculated as [incremental QALYs * willingness to pay threshold] – incremental costs), assuming a willingness to pay threshold of £20,000 or £30,000 per QALY (37). Outcomes were collected for the whole population and by sex. All model outcomes were weighted using HSE 2014 survey weights to represent the population of England.

Ethical approval

This research has been conducted using the UK Biobank Resource under Application Number 28126. The UK Biobank study was conducted according to the guidelines laid down in the declaration of Helsinki and all procedures involving human subjects/patients were approved by the North West Multi- Centre Research Ethics Committee (reference number 06/MRE09/65). At recruitment all participants gave written informed consent to participate in UK Biobank and be followed up, using a signature capture device.

Results

Cost-effectiveness Outcomes

Risk-stratification based on a mean FIT120 screening start age of 60 is expected to be cost-effective compared to starting FIT120 screening in all individuals at age 60, with incremental net monetary benefit per person ranging from £4 using the Ma score to £81 using the Total Risk + Sex score (Figure 1 and Table 2), assuming a willingness to pay threshold of £20,000 per QALY. Net monetary benefit is higher for the risk scores with higher discrimination. This difference in cost-effectiveness between risk scores is due to differences in QALY gain (ranging between 0.0001 QALYs per person using the Ma score to 0.0042 QALYs per person using the Total Risk + Sex score), as the higher discrimination risk scores also result in higher total costs, with some of the lower discrimination scores actually being cost-saving (ranging between -£1.41 per person using the Ma score to £2.47 per person using the Total Risk + Sex score). All scores result in reduced CRC treatment costs, with greater cost-savings coming from the high discrimination risk scores; however

additional screening costs outweigh the CRC treatment savings for the higher discrimination risk scores (Table 2). In line with the cost-effectiveness results, the maximum cost at which risk scoring at age 40 could be priced, whilst still enabling the risk stratification strategy to be cost-effective at a threshold of £20,000 per QALY, varies between £5 per person for the Ma score and £114 per person for the Total Risk + Sex score.

Risk-stratification based on a mean FIT120 screening start age of 50, compared to starting FIT120 screening in all individuals at age 50, produces lower QALY gains (0.0001 to 0.0025 QALYs per person), higher total costs (-£0.34 to £3.82 per person), and consequently lower incremental net monetary benefit (£2 to £46 per person) and maximum justifiable cost of risk scoring (£4 to £65 per person) for each of the risk scores (Supplementary Figure 2 & Supplementary Table 2). In contrast, if FIT threshold is reduced to 20, but mean screening start age is kept at 60, the risk stratified approach produces slightly higher QALY gains (0.0001 to 0.0058 QALYs per person), all strategies produce cost savings (-£3.29 to -£1.96 per person), and incremental net monetary benefit and maximum justifiable costs for risk scoring are greater compared with FIT120 screening (Supplementary Figure 3 & Supplementary Table 3). As expected, reducing FIT uptake reduces the benefits of screening and the overall cost-effectiveness of each strategy (Supplementary Table 4). Reducing the discount rate results in lower incremental net monetary benefit for all risk-stratified strategies and vice versa for increased discount rates in most cases, although the Ma score is no longer cost-effective at a discount rate of 5% (Supplementary Tables 5 & 6).

Probabilistic sensitivity analysis results indicate that the best performing Total Risk + Sex score, when used for risk-stratification for FIT120 screening with a mean screening start age of 60, has a 96% probability of being more cost-effective than the comparator (all invited at age 60) and a 47% probability of being the most cost-effective risk score overall, assuming a willingness to pay threshold of £20,000 per QALY (Figure 2). The Ma score in contrast has only a 53% probability of being cost-effective when compared with no risk stratification. Uncertainty is generally higher if the mean FIT screening start age is 50, with the Total Risk + Sex score having only 78% probability of being more cost-effective than the comparator (all invited at age 50), and 29% probability of being the most cost-effective risk score overall. Uncertainty is generally lower if a FIT threshold of 20 is used for screening, with the Total Risk + Sex score having 99% probability of being more cost-effective than the comparator.

Disease & Resource Use Outcomes

Risk-stratification using risk scores with low discrimination is expected to cause a slight increase in CRC incidence and mortality (e.g. an increase of 2 in 100,000 in CRC incidence and of 18 in 100,000 in CRC mortality using the Ma score with a mean FIT120 screening start age of 60) (Figure 1 and Supplementary Table 2). By comparison, risk-stratification using risk scores with higher discrimination is expected to reduce CRC incidence and mortality considerably (e.g. a reduction of 218 in 100,000 in CRC incidence and of 136 in 100,000 in CRC mortality using the Total Risk + Sex score with a mean FIT screening start age of 60). Again, a clear gradient is apparent by risk score discrimination, smaller impacts are seen at when the mean FIT screening start age is 50 or if FIT uptake is reduced, and

larger impacts are seen if the FIT threshold is 20 rather than 120. The mean number of incremental FIT invites per person is very similar between all the strategies, as the intention was to minimise these differences when comparing strategies. FIT invites range from -0.023 for the Jeon risk score to 0.077 for the Total Risk + Sex score per person throughout their lifetime (Table 2). However, the number of screening colonoscopies varies quite considerably (between -166 per 100,000 people for the Ma score and 859 per 100,000 for the Total Risk + Sex score), reflecting the ability of each risk score to redirect screening resources towards higher risk people who are more likely to test positive with FIT screening. The combined impact of this differential screening resource use is to result in lower screening costs for scores with low discrimination and increased screening costs for scores with higher discrimination.

Subgroup Outcomes

Benefits of risk-stratification are distributed unequally between men and women, particularly if sex is included as a criteria for risk stratification, but even where sex is not explicitly included (Figure 3, Supplementary Table 7). Using the Total Risk + Sex score with a mean FIT screening start age of 60, the model predicts that men will gain more QALYs than women (0.0061 vs 0.0024 per person), will lead to an increase in NHS costs, whilst women produce savings (£6.31 vs -£1.11 per person), and compared with women, men will gain a bigger reduction in CRC incidence (-321 per 100,000 vs -123 per 100,000) and mortality (-219 per 100,000 vs -98 per 100,000). Due to the additional QALY gains, risk stratification is more cost-effective in men than women (incremental net monetary benefit per person is £115 in men, but only £50 in women) and the maximum cost at which risk scoring at age 40 could be priced, whilst still enabling the risk stratification strategy to be cost-effective at a threshold of £20,000 per QALY, is higher in men than women (£162 for men compared with £70 for women). Men are invited to FIT screening more frequently (an additional 0.93 invites), whilst women are invited less frequently (-0.72 additional invites), and whilst the number of screening colonoscopies increases in both sexes, this is much greater in men than women (1455 additional colonoscopies per 100,000 men vs 303 per 100,000 women). This indicates that part of the benefit of risk-stratification in men is due to a redistribution of resources away from the women at lower risk, to the men at higher risk, although both sexes are expected to benefit overall from improved health and cost-effectiveness outcomes.

Discussion

Our findings suggest that stratified screening in which individuals are invited to screening based on personalised risk, assessed through genetic and/or phenotypic risk scores rather than age alone, is likely to save costs and reduce CRC incidence and mortality without significantly increasing resource use. Given the resource constraints currently preventing cost-effective initiation of screening at younger ages in many countries including England, this could represent a reasonably resource-neutral means of improving efficiency, providing that costs of risk scoring can be minimised. However, we have shown that these benefits of risk-stratification diminish if resources are available to screen the entire population at a younger age. This result is supported by evidence from other modelling studies that have

compared strategies in which screening starts from age 50 or younger, and which have concluded that risk stratification based on genetic risk is not likely to be more cost-effective than uniform screening at current levels of risk score discrimination (13,14). This means that whilst risk-stratification may be an attractive option currently in England where population screening starts at age 60, it may not be attractive in other countries that start screening at lower ages, or in England in the future if more resources become available for screening.

The results indicate that benefits increase as the discrimination of the risk scores used increases. Scores with low discrimination such as the Ma score that has an AUROC of 0.56 appear to be cost-effective primarily through their impacts in increasing cost savings due to screening lower risk people later/less frequently, producing few or even negative health benefits. However, higher ranking risk scores with AUROCs of above 0.65 are likely to promote QALY gains in addition to cost-savings, and result in CRC incidence and mortality reductions. In external validation within a UK cohort, the risk score by Huyghe with 120 SNPs had an AUROC of 0.62 (95% CI 0.61-0.64) in both women and men (16), which is close to this level, although the performance of this score could not be evaluated independently within our model. It is important to note that discrimination of risk scores may differ considerably between cohorts from different countries, and scores that perform well in a UK population may not rank as highly in non-European populations, indicating that there may be a need for different risk scores with high discrimination for different populations of interest. With increasing access to large datasets and more sophisticated statistical techniques, it is likely that better performing models will be developed in the future that combine known genetic and phenotypic risk for specific populations.

The costs of calculating risk in the population at age 40 were not incorporated within the modelling as these currently cannot be accurately quantified. However, the maximum justifiable cost analysis suggests that this could be as high as £114 per person for risk scores with high discrimination and risk-stratification, whilst still being cost-effective. Actual costs of risk-scoring will vary depending upon whether included risk factors are already routinely collected in primary care, or whether additional data collection or sampling (e.g. for genetic testing) is required and if so, whether these additional costs can be offset by combining them with data collection for other screening programmes. The relative cost-effectiveness of different risk scores is therefore highly likely to differ, dependent upon their administration costs as well as the gradient of benefits they produce. In addition to the cost, there are also logistical challenges associated both with linking routinely collected primary care data with screening programme data and collecting new information on the population. In England the NHS Health Check programme provides a potential vehicle for collecting new information. At age 40 all those without a prior history of cardiovascular disease are invited to their first 5-yearly health check(38), which involves taking blood samples and collecting information about phenotypic risk factors including BMI and smoking. It seems feasible that this NHS Health Check could be extended for fairly minimal cost, to enable collection of additional risk factor information and assessment of risk for CRC and potentially other conditions. However, uptake of NHS Health Checks is currently only 41% (39), meaning that the risk for many people would not be assessed. An alternative route would also be required for those not eligible for an NHS Health Check. In this analysis we have assumed that the risk of all individuals is known; however, incomplete uptake would significantly reduce the

overall population benefits of risk-stratification. This analysis has also assumed that individuals would not change either their screening uptake or their CRC risk behaviour in response to risk-assessment, although there is some evidence that willingness to uptake screening could be increased in people who know they are high risk, and unchanged in people who know they are low risk, which if true could improve cost-effectiveness of risk stratification(40). Using risk-scoring as an opportunity to modify lifestyle risk factors could increase its cost-effectiveness further if costs of behaviour change interventions could be minimised. In England, some behaviour change programmes that would reduce CRC risk (e.g. smoking cessation and weight management) are already offered to some people as part of the NHS Health Check (38), and uptake or effectiveness of these might be improved if patients were also aware of the potential impact on their CRC risk, although evidence from a recent study suggests that there is little impact on health-related behaviour in response to risk scoring (41). Uptake of risk-scoring and behaviour change in response to risk-scoring should be investigated as part of any future pilot study for risk score-based screening.

Our results suggest that inviting individuals to screening based on estimated risk rather than age alone, is likely to benefit men more than women due to the higher underlying rate of disease in men (42), and also that they will start screening earlier on average than women when risk scores including sex, or phenotypic risk factors correlated with sex, are used. This results in a shift of screening resources towards men, and greater improvement in their CRC incidence and mortality outcomes. Whilst uptake of screening is lower in men (43–46), the modelling indicates that overall, the benefits of inviting them at a younger age outweighs the disadvantages of not inviting women until older age, thereby both improving efficiency and mitigating some of the inequities inherent to CRC screening. This analysis also only focussed on one potential application of risk-stratification – to determine age at first FIT screen, but risk stratification could be applied elsewhere in the screening pathway, for example, using a combination of individual CRC risk and FIT score to determine who gets follow-up colonoscopy, or using a combination of individual CRC risk and result of previous screen to determine when the next screening invite should occur.

There are several limitations of the modelling that could impact on results. Data limitations have meant that some known risk factors are missing from the model (in particular red meat and fibre, neither of which are in HSE 2014 (18)), and correlations between the set of correlated genetic risk factors and the HSE correlated phenotypic risk factors are absent. Assumptions were also made that all risk factors will impact on the first natural history transitions from normal epithelium only, and through both the adenoma carcinoma and serrated natural history pathways to a similar extent, thereby making disease attributed to all risk factors equally amenable to screening. Whilst there is no data to inform this, it is unlikely to be the case given the posited differences between pathways and adenoma/CRC prevalence in terms of age and sex distribution and location in the bowel. Data limitations have also resulted in high uncertainty around modelling results. Better quality routine data collection (e.g. using FIT screening data from the BCSP now it has commenced in England, rather than FIT pilot data), and more knowledge around CRC natural history should enable more accurate estimates of the benefits of risk-stratification to be produced in the future.

Supplementary Material

Refer to Web version on PubMed Central for supplementary material.

Acknowledgements

We would like to thank our patient and public representative Margaret Johnson and members of the project steering group (Fiona Walter, Antonis Antoniou, Jon Emery and Richard Miller) for their helpful discussions during the development of this project and (in the case of Margaret Johnson) helpful comments on the manuscript. We would also like to thank Britt Kilian, Joseph Dennis and Xin Yang for data management support with the UK Biobank data, and Mark Strong for his advice on model calibration.

This project was funded through a grant to JUS from Bowel Cancer UK (grant number 18PG0008). Development of MiMiC-Bowel was funded by the UK National Screening Committee and Research England (Quality-related research funding to Support Evidence Based Policy Making distributed by the University of Sheffield, grant number X/165308-11). JUS is funded by a Cancer Research UK Prevention Fellowship (C55650/A21464). DT was supported by a Cancer Research UK grant (C1287/A16563). The University of Cambridge has received salary support in respect of SJG from the NHS in the East of England through the Clinical Academic Reserve.

Data availability

Full description of model methods, parameters and data sources are available online (<http://eprints.whiterose.ac.uk/162743/>). Model code is available on request.

References

1. International Agency for Research on Cancer. Global Cancer Observatory. 2018
2. International Agency for Research on Cancer. Colorectal cancer screening. IARC Handb Cancer Prev. 2019; 17 (1–300)
3. Whyte, S, Thomas, C, Kearns, B, Webster, M, Chilcott, J. Optimising Bowel Cancer Screening Phase 1: Optimising the cost effectiveness of repeated FIT screening and screening strategies combining bowel scope and FIT screening Report to the National Screening Committee. SchHARR; University of Sheffield: 2017.
4. Richards M. Report of the independent review of adult screening programmes in England: Appendix D: NHS Bowel cancer screening programme. NHS England. 2019
5. Brown KF, Rumgay H, Dunlop C, Ryan M, Quartly F, Cox A, et al. The fraction of cancer attributable to modifiable risk factors in England, Wales, Scotland, Northern Ireland, and the United Kingdom in 2015. Br J Cancer. 2018; 118 (8) :1130–41. DOI: 10.1038/s41416-018-0029-6 [PubMed: 29567982]
6. Hippisley-Cox J, Coupland C. Development and validation of risk prediction algorithms to estimate future risk of common cancers in men and women: prospective cohort study. BMJ Open. 2015; 5 e007825 doi: 10.1136/bmjopen-2015-007825
7. Huyghe JR, Bien SA, Harrison TA, Kang HM, Chen S, Schmit SL, et al. Discovery of common and rare genetic risk variants for colorectal cancer. Nat Genet. 2019; 51 (1) :76–87. DOI: 10.1038/s41588-018-0286-6 [PubMed: 30510241]
8. Lowery JT, Ahnen DJ, Schroy PC 3rd, Hampel H, Baxter N, Boland CR, et al. Understanding the contribution of family history to colorectal cancer risk and its clinical implications: A state-of-the-science review. Cancer. 2016; 122 (17) :2633–45. DOI: 10.1002/cncr.30080 [PubMed: 27258162]
9. Jasperson KW, Tuohy TM, Neklason DW, Burt RW. Hereditary and familial colon cancer. Gastroenterology. 2010; 138 (6) :2044–58. DOI: 10.1053/j.gastro.2010.01.054 [PubMed: 20420945]
10. Cairns SR, Scholefield JH, Steele RJ, Dunlop MG, Thomas HJ, Evans GD, et al. Guidelines for colorectal cancer screening and surveillance in moderate and high risk groups (update from 2002). Gut. 2010; 59 (5) :666–89. DOI: 10.1136/gut.2009.179804 [PubMed: 20427401]

11. McGeoch L, Saunders CL, Griffin SJ, Emery JD, Walter FM, Thompson DJ, et al. Risk Prediction Models for Colorectal Cancer Incorporating Common Genetic Variants: A Systematic Review. *Cancer Epidemiol Biomarkers Prev.* 2019; 28 (10) :1580–93. DOI: 10.1158/1055-9965.EPI-19-0059 [PubMed: 31292139]
12. Usher-Smith JA, Walter FM, Emery JD, Win AK, Griffin SJ. Risk Prediction Models for Colorectal Cancer: A Systematic Review. *Cancer Prev Res (Phila).* 2016; 9 (1) :13–26. DOI: 10.1158/1940-6207.CAPR-15-0274 [PubMed: 26464100]
13. Cenin DR, Naber SK, de Weerd AC, Jenkins MA, Preen DB, Ee HC, et al. Cost-effectiveness of personalized screening for colorectal cancer based on polygenic risk and family history. *Cancer Epidemiol Biomarkers Prev.* 2020; 29 (1) :10–21. DOI: 10.1158/1055-9965.EPI-18-1123 [PubMed: 31748260]
14. Naber SK, Kundu S, Kuntz KM, Dotson WD, Williams MS, Zauber AG, et al. Cost-effectiveness of risk-stratified colorectal cancer screening based on polygenic risk: current status and future potential. *JNCI Cancer Spectrum.* 2020; 4 (1) pkz086 doi: 10.1093/jncics/pkz086 [PubMed: 32025627]
15. Sekiguchi M, Igarashi A, Sakamoto T, Saito Y, Esaki M, Matsuda T. Cost-effectiveness analysis of colorectal cancer screening using colonoscopy, fecal immunochemical test and risk score. *Gastroenterology.* 2020; 35 (9) :1555–61. DOI: 10.1111/jgh.15033
16. Saunders CL, Kilian B, Thompson DJ, McGeoch LJ, Griffin SJ, Antoniou AC, et al. External validation of risk prediction models incorporating common genetic variants for incident colorectal cancer using UK Biobank. *Can Prev Res.* 2020; 13 :509–20. DOI: 10.1158/1940-6207.CAPR-19-0521
17. Usher-Smith JA, Harshfield A, Saunders CL, Sharp SJ, Emery J, Walter FM, et al. External validation of risk prediction models for incident colorectal cancer using UK Biobank. *Br J Cancer.* 2018; 118 (5) :750–9. DOI: 10.1038/bjc.2017.463 [PubMed: 29381683]
18. NHS Digital. Health Survey for England. 2014
19. Office for National Statistics. Cancer Registration Statistics, England and census dataEngland: 2005.
20. Brenner H, Altenhofen L, Hoffmeister M. Sex, Age, and Birth Cohort Effects in Colorectal Neoplasms. *Ann Intern Med.* 2010; 152 :697–703. [PubMed: 20513827]
21. Brenner H, Altenhofen L, Stock C, Hoffmeister M. Natural history of colorectal adenomas: birth cohort analysis among 3.6 million participants of screening colonoscopy. *Cancer Epidemiol Biomarkers Prev.* 2013; 22 (6) :1043–51. DOI: 10.1158/1055-9965.EPI-13-0162 [PubMed: 23632815]
22. Brenner H, Altenhofen L, Stock C, Hoffmeister M. Incidence of colorectal adenomas: birth cohort analysis among 4.3 million participants of screening colonoscopy. *Cancer Epidemiol Biomarkers Prev.* 2014; 23 (9) :1920–7. DOI: 10.1158/1055-9965.EPI-14-0367 [PubMed: 25012996]
23. Brenner H, Jansen L, Ulrich A, Chang-Claude J, Hoffmeister M. Survival of patients with symptom- and screening-detected colorectal cancer. *Oncotarget.* 2016; 7 (28) :44695–704. [PubMed: 27213584]
24. National Life Tables, England, 2016–2018. Office for National Statistics; 2019. Oct 20, <https://www.ons.gov.uk/peoplepopulationandcommunity/birthsdeathsandmarriages/lifeexpectancies/datasets/nationallifetablesunitedkingdomreferencetables> [Accessed 2019 20th October]
25. Office for National Statistics. Death Registrations Summary Tables - England and Wales. 2018
26. Gatto NM, Frucht H, Sundararajan V, Jacobson JS, Grann VR, Neugut AI. Risk of perforation after colonoscopy and sigmoidoscopy: a population-based study. *J Natl Cancer Inst.* 2003; 95 (3) :230–6. [PubMed: 12569145]
27. Rutter MD, Nickerson C, Rees CJ, Patnick J, Blanks RG. Risk factors for adverse events related to polypectomy in the English Bowel Cancer Screening Programme. *Endoscopy.* 2014; 46 (02) :90–7. [PubMed: 24477363]
28. Moss S, Mathews C, Day TJ, Smith S, Seaman HE, Snowball J, et al. Increased uptake and improved outcomes of bowel cancer screening with a faecal immunochemical test: results from a pilot study within the national screening programme in England. *Gut.* 2017; 66 (9) :1631–44. DOI: 10.1136/gutjnl-2015-310691 [PubMed: 27267903]

29. Nickerson C. NHS Bowel Cancer Screening Programme (BCSP) Data Extract. 2016
30. Toes-Zoutendijk E, van Leerdam ME, Dekker E, van Hees F, Penning C, Nagtegaal I, et al. Real-Time Monitoring of Results During First Year of Dutch Colorectal Cancer Screening Program and Optimization by Altering Fecal Immunochemical Test Cut-Off Levels. *Gastroenterology*. 2017; 152 (4) :767–75. e2 doi: 10.1053/j.gastro.2016.11.022 [PubMed: 27890769]
31. Zorzi M, Hassan C, Capodaglio G, Fedato C, Montaguti A, Turrin A, et al. Long-term performance of colorectal cancerscreening programmes based on the faecal immunochemical test. *Gut*. 2018; 67 (12) :2124–30. DOI: 10.1136/gutjnl-2017-314753 [PubMed: 29101260]
32. Laudicella M, Walsh B, Burns E, Smith PC. Cost of care for cancer patients in England: evidence from population-based patient-level data. *Br J Cancer*. 2016; 114 (11) :1286–92. DOI: 10.1038/bjc.2016.77 [PubMed: 27070711]
33. Sudlow C, Gallacher J, Allen N, Beral V, Burton P, Danesh J, et al. UK biobank: an open access resource for identifying the causes of a wide range of complex diseases of middle and old age. *PLoS Med*. 2015; 12 (3) e1001779 doi: 10.1371/journal.pmed.1001779 [PubMed: 25826379]
34. Machiela MJ, Chanock SJ. LDlink a web-based application for exploring population-specific haplotype structure and linking correlated alleles of possible functional variants. *Bioinformatics*. 2015; 31 (21) :3555–7. DOI: 10.1093/bioinformatics/btv402 [PubMed: 26139635]
35. Jeon J, Du M, Schoen RE, Hoffmeister M, Newcomb PA, Berndt SI, et al. Determining Risk of Colorectal Cancer and Starting Age of Screening Based on Lifestyle, Environmental, and Genetic Factors. *Gastroenterology*. 2018; 154 (8) :2152–64. e19 doi: 10.1053/j.gastro.2018.02.021 [PubMed: 29458155]
36. Ribbing Wilen H, Blom J, Hoiyer J, Hultcrantz R. Fecal immunochemical test in colorectal cancer screening: Colonoscopy findings by different cut-off levels. *J Gastroenterol Hepatol*. 2019; 34 (1) :103–12. DOI: 10.1111/jgh.14373 [PubMed: 29968937]
37. National Institute of Health and Care Excellence (NICE). Guide to the methods of technology appraisal. 2013
38. Selby K, Jensen CD, Lee JK, Doubeni CA, Schottinger JE, Zhao WK, et al. Influence of Varying Quantitative Fecal Immunochemical Test Positivity Thresholds on Colorectal Cancer Detection: A Community-Based Cohort Study. *Ann Intern Med*. 2018; 169 (7) :439–47. DOI: 10.7326/M18-0244 [PubMed: 30242328]
39. Public Health England. NHS Health Check Fingertips Tool. 2019
40. Usher-Smith JA, Harvey-Kelly LLW, Rossi SH, Harrison H, Griffin SJ, Stewart GD. Acceptability and potential impact on uptake of using different risk stratification approaches to determine eligibility for screening: A population-based survey. *Health Expect*. 2020; doi: 10.1111/hex.13175
41. Masson G, Mills K, Griffin SJ, Sharp SJ, Klein WMP, Sutton S, et al. A randomised controlled trial of the effect of providing online risk information and lifestyle advice for the most common preventable cancers. *Prev Med*. 2020; 138 106154 doi: 10.1016/j.ypmed.2020.106154 [PubMed: 32473959]
42. Brenner H, Hoffmeister M, Arndt V, Haug U. Gender differences in colorectal cancer: implications for age at initiation of screening. *Br J Cancer*. 2007; 96 (5) :828–31. DOI: 10.1038/sj.bjc.6603628 [PubMed: 17311019]
43. Morris S, Baio G, Kendall E, von Wagner C, Wardle J, Atkin W, et al. Socioeconomic variation in uptake of colonoscopy following a positive faecal occult blood test result: a retrospective analysis of the NHS Bowel Cancer Screening Programme. *Br J Cancer*. 2012; 107 (5) :765–71. DOI: 10.1038/bjc.2012.303 [PubMed: 22864455]
44. Quyn AJ, Fraser CG, Stanners G, Carey FA, Carden C, Shaukat A, et al. Uptake trends in the Scottish Bowel Screening Programme and the influences of age, sex, and deprivation. *J Med Screen*. 2018; 25 (1) :24–31. DOI: 10.1177/0969141317694065 [PubMed: 29183246]
45. Solmi F, Von Wagner C, Kobayashi LC, Raine R, Wardle J, Morris S. Decomposing socio-economic inequality in colorectal cancer screening uptake in England. *Soc Sci Med*. 2015; 134 :76–86. DOI: 10.1016/j.socscimed.2015.04.010 [PubMed: 25917138]
46. von Wagner C, Baio G, Raine R, Snowball J, Morris S, Atkin W, et al. Inequalities in participation in an organized national colorectal cancer screening programme: results from the first 2.6 million

invitations in England. *Int J Epidemiol.* 2011; 40 (3) :712–8. DOI: 10.1093/ije/dyr008 [PubMed: 21330344]

Prevention Relevance

Colorectal cancer (CRC) screening is essential for early detection and prevention of CRC, but implementation is often limited by resource constraints. This work shows that risk-stratification using genetic and phenotypic risk could improve the effectiveness and cost-effectiveness of screening programmes, without using substantially more screening resources than are currently available.

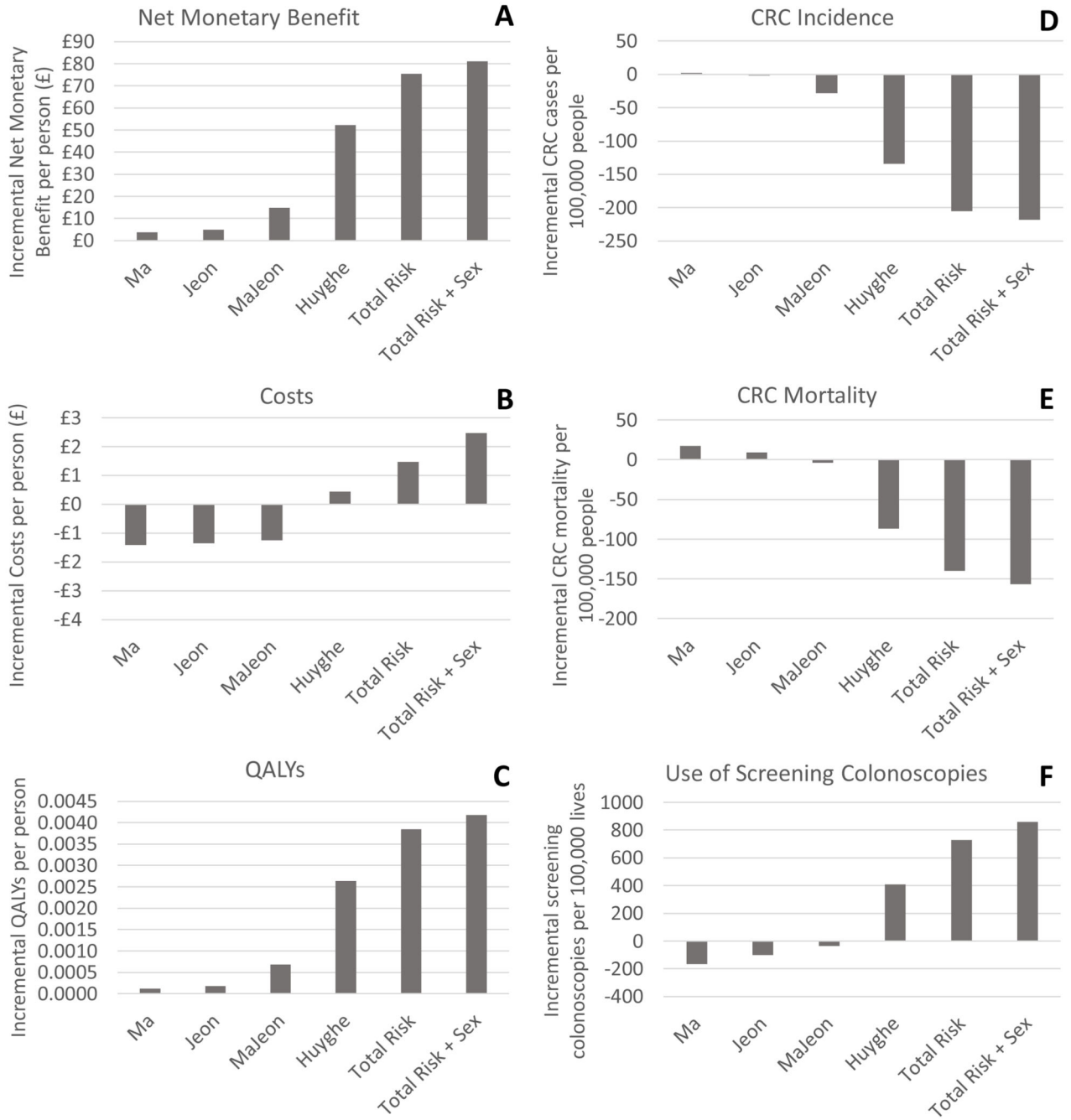


Figure 1. Incremental outcomes for risk-stratification (based on a mean screening start age of 60), compared to screening start age of 60 for the entire population. Incremental net monetary benefit is based on a cost-effectiveness threshold of £20,000/QALY.

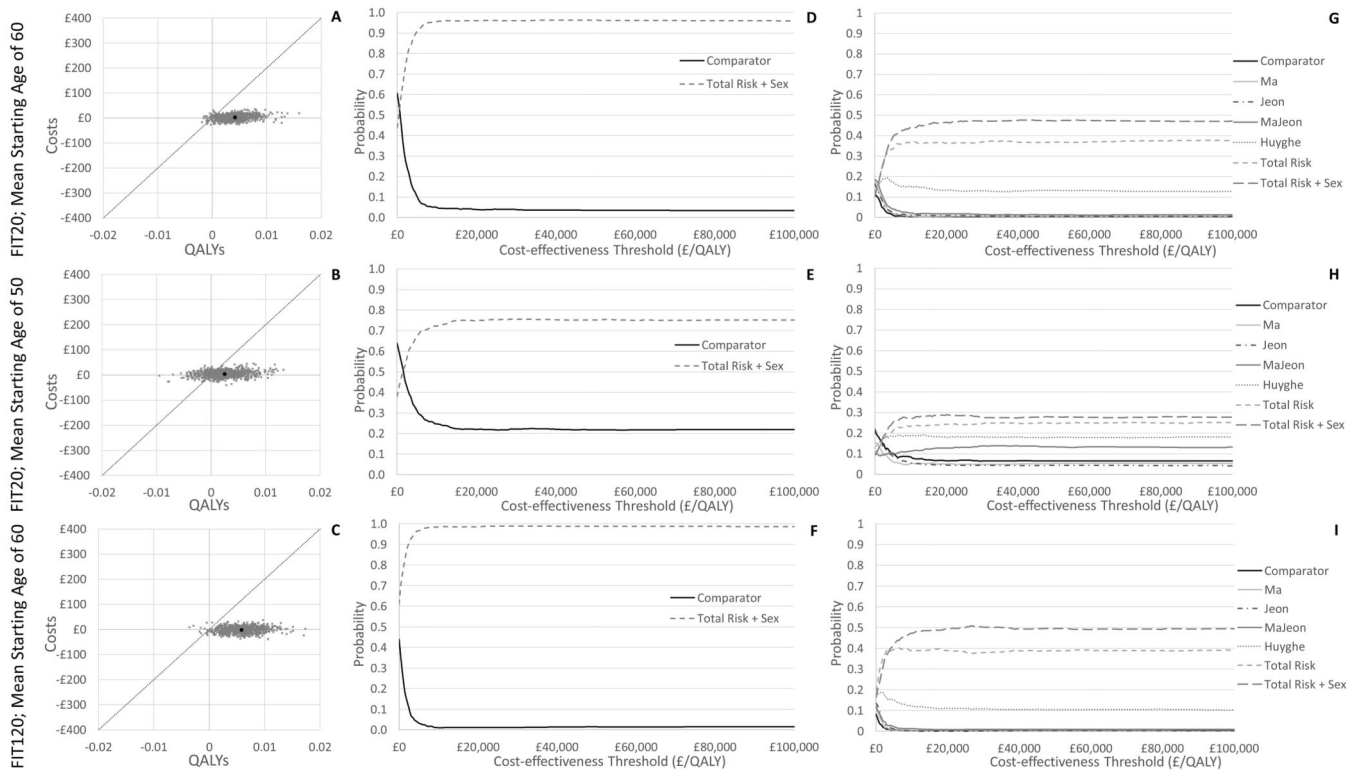


Figure 2. Cost-effectiveness planes (A-C) and cost-effectiveness acceptability curves (D-I) comparing probabilistic sensitivity analysis results for risk-stratification using the Total Risk + Sex score (based on a mean starting age of 60 or 50 and at a FIT threshold of 120 or 20), against inviting all at age 60 or age 50 respectively or against other risk scores.

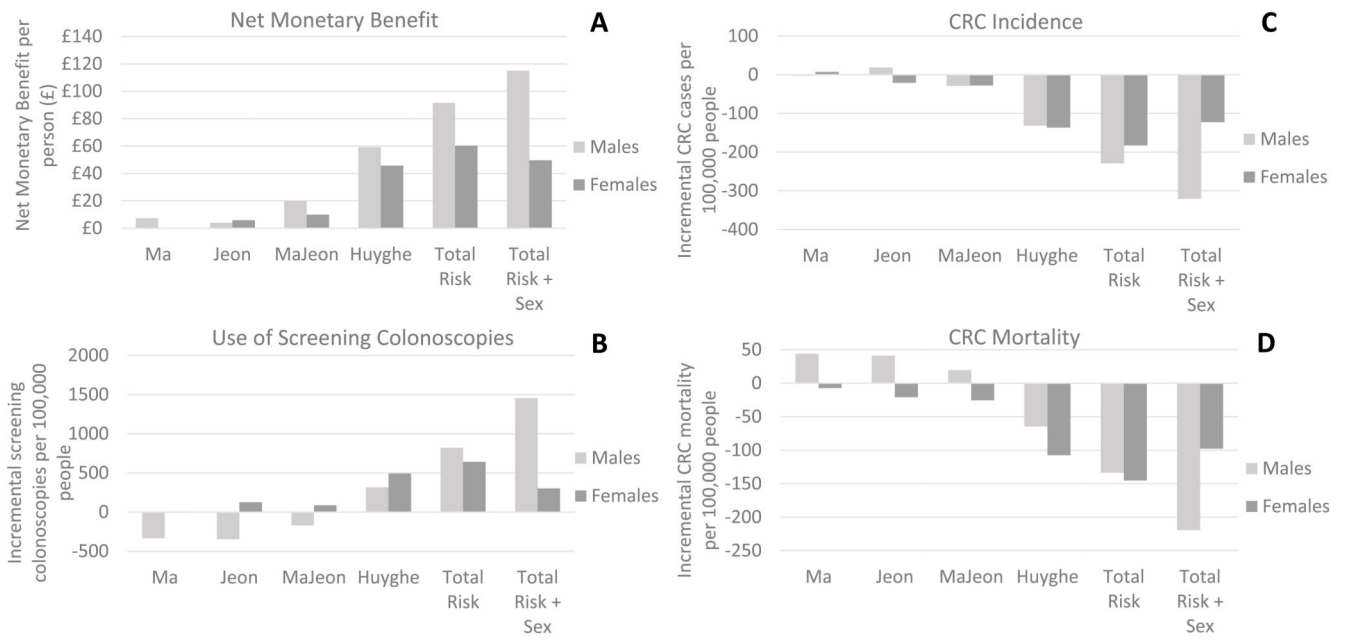


Figure 3. Incremental outcomes by sex for screening start age based on risk-stratification using the Total Risk plus Sex score, compared to screening start age of 60 for the entire population. Incremental net monetary benefit is based on a cost-effectiveness threshold of £20,000/QALY.

Table 1
Characteristics of risk scores used in the analysis, based on assessing risk at age 40.

Risk Score	Ma*	Jeon	MaJeon*	Huyghe	Total Risk	Total Risk plus Sex
Included risk factors	BMI Smoking Alcohol PA	57 SNPs	BMI Smoking Alcohol PA 57 SNPs	120 SNPs	BMI Smoking Alcohol PA 120 SNPs	BMI Smoking Alcohol PA 120 SNPs Sex
10 year AUROC: Total	0.559	0.577	0.660	0.678	0.720	0.721
10 year AUROC: Male	0.566	0.572	0.654	0.673	0.715	0.715
10 year AUROC: Female	0.546	0.582	0.666	0.684	0.723	0.723
Proportion who get CRC in top decile of risk	0.145	0.157	0.242	0.250	0.314	0.316
Mean age at first FIT invite: with comparator age 60	60.06	60.11	60.50**	60.08	60.05	60.10
Mean 10 year risk: with comparator age 60	0.96%	0.98%	0.94%	0.90%	0.90%	0.86%
Mean age at first FIT invite: with comparator age 50	50.13	50.10	50.07	50.02	50.04	50.06
Mean 10 year risk: with comparator age 50	0.34%	0.34%	0.29%	0.32%	0.31%	0.30%

BMI = Body Mass Index; PA = Physical Activity; SNP = Small nucleotide polymorphism; AUROC = Area Under the Receiver Operating Characteristic Curve; CRC = Colorectal Cancer; FIT = Faecal Immunochemical Test

* The original Ma score also includes age, but this wasn't included here as all individuals are being screened at age 40

** The MaJeon age distribution is highly skewed compared to other scores meaning a risk level with a higher mean screening start age had to be selected to ensure a similar value for number of FIT invites per person.

Table 2
Full set of incremental outcomes for risk-stratification based on a mean FIT120 screening start age of 60, compared to screening everyone with FIT120 at age 60..

Risk Score		Ma	Jeon	MaJeon	Huyghe	Total Risk	Total Risk + Sex
Total Costs per person	M	-£1.41	-£1.35	-£1.24	£0.44	£1.47	£2.47
	L	-£20	-£18	-£19	-£18	-£20	-£20
	U	£15	£15	£17	£19	£23	£22
CRC Treatment Costs per person	M	-£2.11	-£1.73	-£3.37	-£6.38	-£8.55	-£8.51
	L	-£21	-£20	-£21	-£26	-£31	-£32
	U	£15	£15	£16	£13	£14	£13
Screen & Surveillance Costs per person	M	£0.70	£0.38	£2.12	£6.82	£10.02	£10.99
	L	-£3	-£4	-£2	£2	£5	£5
	U	£5	£5	£7	£12	£16	£17
QALYs per person	M	0.0001	0.0002	0.0007	0.0026	0.0038	0.0042
	L	-0.0039	-0.0034	-0.0028	-0.0016	-0.0007	-0.0002
	U	0.0037	0.0037	0.0046	0.0072	0.0088	0.0094
NMB per person (£20,000/QALY Threshold)	M	£3.71	£4.99	£14.81	£52.27	£75.36	£81.15
	L	-£70	-£64	-£57	-£29	-£12	-£4
	U	£76	£72	£90	£138	£177	£185
NMB per person (£30,000/QALY Threshold)	M	£4.86	£6.81	£21.59	£78.63	£113.77	£122.97
	L	-£107	-£96	-£83	-£45	-£15	-£9
	U	£115	£109	£137	£211	£268	£275
MJC per person (£20,000/QALY Threshold)	M	£5.23	£7.04	£20.89	£73.74	£106.30	£114.48
	L	-£99	-£90	-£80	-£41	-£17	-£5
	U	£107	£102	£126	£195	£250	£261
MJC per person (£30,000/QALY Threshold)	M	£6.86	£9.61	£30.45	£110.92	£160.49	£173.46
	L	-£150	-£136	-£118	-£64	-£21	-£13
	U	£162	£154	£193	£298	£379	£389
Prob. cost-effective (£20,000/QALY)		53%	55%	65%	89%	96%	96%
Prob. cost-effective (£30,000/QALY)		54%	55%	65%	89%	96%	96%
CRC Incidence per 100,000 people	M	2	-2	-28	-134	-205	-218
	L	-1117	-1035	-1127	-1275	-1384	-1391
	U	1109	1069	1062	1006	946	927
CRC Mortality per 100,000 people	M	18	9	-4	-87	-140	-156
	L	-467	-459	-474	-568	-633	-647
	U	485	468	483	404	352	351
FIT screening invites per person	M	0.016	-0.023	0.034	0.038	0.053	0.077
	L	-0.008	-0.045	0.007	-0.003	-0.012	0.009
	U	0.041	0.000	0.062	0.076	0.110	0.136
Screening colonoscopies per 100,000 people	M	-166	-101	-37	408	728	859

Risk Score		Ma	Jeon	MaJeon	Huyghe	Total Risk	Total Risk + Sex
	<i>L</i>	-847	-802	-710	-310	-49	14
	<i>U</i>	493	656	654	1143	1552	1655

QALY Quality Adjusted Life Year; NMB Net Monetary Benefit; MJC Maximum Justifiable Cost (of risk scoring procedure); CRC Colorectal Cancer; FIT Faecal Immunochemical Test; Prob. Probability; M Mean; L Lower 95% credible interval; U Upper 95% credible interval.