

Published in final edited form as:

Leukemia. 2022 March 01; 36(3): 781–789. doi:10.1038/s41375-021-01444-6.

Genomic abnormalities of *TP53* define distinct risk groups of paediatric B-cell non-Hodgkin lymphoma

Alexander M Newman^{1,2,3}, Masood Zaka^{1,2,3}, Peixun Zhou^{1,2,3}, Alex E Blain³, Amy Erhorn³, Amy Barnard³, Rachel E Crossland³, Sarah Wilkinson³, Amir Enshaei³, Julian De Zordi³, Fiona Harding⁴, Mary Taj⁵, Katrina M Wood⁶, Despina Televantou⁶, Suzanne D Turner^{7,8}, G.A. Amos Burke⁹, Christine J Harrison³, Simon Bomken^{3,10}, Chris M Bacon^{3,6}, Vikki Rand^{1,2,3,*}

¹School of Health & Life Sciences, Teesside University, Middlesbrough, UK

²National Horizons Centre, Teesside University, 38 John Dixon Lane, Darlington, UK

³Wolfson Childhood Cancer Research Centre, Translational and Clinical Research Institute, Newcastle University, Newcastle upon Tyne, UK

⁴Newcastle Genetics Laboratory, Newcastle upon Tyne Hospitals NHS Foundation Trust, Newcastle upon Tyne, UK

⁵Department of Paediatric Oncology, Royal Marsden Hospital, Sutton, Surrey, UK

⁶Department of Cellular Pathology, Newcastle upon Tyne Hospitals NHS Foundation Trust, Newcastle upon Tyne, UK

⁷Division of Cellular and Molecular Pathology, Department of Pathology, University of Cambridge, Addenbrooke's Hospital, UK

⁸CEITEC, Masaryk University, Brno, Czech Republic

⁹Department of Paediatric Haematology, Oncology and Palliative Care, Addenbrooke's Hospital, Cambridge University Hospitals NHS Foundation Trust, Cambridge, UK

¹⁰Department of Paediatric and Adolescent Haematology and Oncology, The Great North Children's Hospital, Newcastle upon Tyne Hospitals NHS Foundation Trust, Newcastle upon Tyne, UK

Users may view, print, copy, and download text and data-mine the content in such documents, for the purposes of academic research, subject always to the full Conditions of use: <https://www.springernature.com/gp/open-research/policies/accepted-manuscript-terms>

* **Corresponding author:** Professor Vikki Rand, PhD, School of Health & Life Sciences, Teesside University, Middlesbrough, Tees Valley. TS1 3BA, UK. v.rand@tees.ac.uk, Tel: ++44 (0)7986 879447.

Authorship Contributions

V.R. conceived the study, secured funding and finalized the manuscript with editorial assistance from all authors. V.R., S.B. and C.M.B. designed the study, directed the research and wrote the manuscript; V.R., A.M.N., S.B. and C.M.B. co-ordinated and participated in data collection, analysis and interpretation; V.R., M.Z., A.E.B. and A.M.N. processed and analysed the copy number and whole exome sequencing data; P.Z., A.E., A.B., R.E.C. and S.W. did laboratory experiments and analysis. V.R., A.M.N., M.Z. and A.E. performed statistical analysis; V.R., C.M.B., S.B., A.B., S.T., M.T. and C.H. gathered samples and patient data, and provided clinical interpretation. C.M.B., K.W. and D.T. conducted the pathological review of the cases. All authors approved the manuscript.

Disclosure of Conflicts of Interest

The authors declare no competing financial interests.

Abstract

Children with B-cell non-Hodgkin lymphoma (B-NHL) have an excellent chance of survival, however, current clinical risk stratification places as many as half of patients in a high-risk group receiving very intensive chemo-immunotherapy. *TP53* alterations are associated with adverse outcome in many malignancies; however, whilst common in paediatric B-NHL, their utility as a risk classifier is unknown. We evaluated the clinical significance of *TP53* abnormalities (mutations, deletion and/or copy number neutral loss of heterozygosity) in a large UK paediatric B-NHL cohort and determined their impact on survival. *TP53* abnormalities were present in 54.7% of cases and were independently associated with a significantly inferior survival compared to those without a *TP53* abnormality (PFS 70.0% vs 100%, $p<0.001$, OS 78.0% vs 100%, $p=0.002$). Moreover, amongst patients clinically defined as high-risk (stage III with high LDH or stage IV), those without a *TP53* abnormality have superior survival compared to those with *TP53* abnormalities (PFS 100% vs 55.6%, $p=0.005$, OS 100% vs 66.7%, $p=0.019$). Biallelic *TP53* abnormalities were either maintained from presentation or acquired at progression in all paired diagnosis/progression Burkitt lymphoma cases. *TP53* abnormalities thus define clinical risk groups within paediatric B-NHL and offer a novel molecular risk stratifier, allowing more personalised treatment protocols.

Introduction

Current treatments for high-grade paediatric B-cell non-Hodgkin lymphoma (B-NHL) in resource-rich countries are extremely effective, with over 93% of children being cured¹⁻⁵. Following the recent demonstration of the benefit of the anti-CD20 monoclonal antibody rituximab these same rates of cure are now achieved even in patients presenting with established high-risk clinical features (high lactate dehydrogenase (LDH), bone marrow (BM) and/or central nervous system (CNS) disease)⁵. This success, however, has required the use of intensive multi-agent chemo-immunotherapy regimens, associated with significant, predominantly acute, toxicity such as infection and mucositis as well as a small risk of long-term neurological side effects and second malignancy⁶⁻⁸. Accordingly, reduction in treatment intensity for at least some patients is a key objective. Unfortunately, previous attempts to reduce treatment intensity in high-risk bone marrow/ CNS-positive patients resulted in unacceptable deterioration in survival, highlighting the need for biomarker-driven risk stratification to complement currently established clinical and laboratory risk features^{2,9}.

In contrast to the excellent overall survival currently achieved, the outcome for children with primary refractory or relapsed B-NHL is extremely poor, with fewer than 30% successfully salvaged despite the routine use of high-dose chemotherapy and stem cell rescue¹⁰⁻¹³. Mounting toxicity in this heavily pre-treated group means that escalating intensity alone cannot provide the solution to improving outcome in these patients¹⁴. Instead, a more comprehensive understanding of the biological drivers of therapy resistance is essential to support development of more effective and less toxic targeted therapies for this group of patients¹⁵.

Genomic studies have greatly improved our understanding of the pathogenesis and clinically-relevant heterogeneity of both Burkitt lymphoma (BL) and diffuse large B cell lymphoma (DLBCL)^{16–28}. Amongst their findings is the frequent mutation in both diseases of the tumour suppressor gene *TP53*, inactivation of which has an established role in lymphomagenesis^{29–33}. *TP53* mutation, often accompanied by loss of heterozygosity, is present in 25–50% of sporadic BLs and approximately 20% of adult DLBCLs at diagnosis, while a recent report suggested a lower incidence amongst paediatric large B-cell lymphomas^{16–22, 24–28, 34–36}. Consistently, *TP53* mutations have been shown to be associated with adverse clinical outcomes in adult aggressive B-cell lymphoma, including DLBCL, and other lymphoid neoplasms^{24, 34–38}. In chronic lymphocytic leukaemia (CLL), they are associated with a poor response to chemotherapy and detection of *TP53* mutation and 17p deletion is used to guide therapeutic decisions³⁹. However, to date no study has incorporated analysis of clinical outcome with a detailed characterisation of *TP53* alterations in paediatric B-NHL, where BL predominates, and the potential utility of *TP53* status as a clinical risk stratifier in this age group has remained unclear.

To address this question, we collected and analysed a clinically annotated cohort of 95 paediatric B-NHL patients from the UK. Using sequencing and copy number (CN) microarray data we show that *TP53* abnormalities at presentation are associated with disease progression and poor outcome. Importantly, the absence of *TP53* abnormalities is associated with an extremely low risk of relapse even in high-risk patients defined by high tumour stage and LDH. Moreover, we demonstrate that biallelic *TP53* abnormalities are either maintained or acquired at the time of disease progression, implicating loss of *TP53* function in the development of treatment resistance. Finally, we show that *TP53* abnormalities are associated with complex chromosomal copy number profiles, identifying a potential mechanism underlying the evolution of chemo-resistant disease.

Methods

Patients and Clinical Samples

B-NHL samples from UK hospitals registered with the Children's Cancer and Leukaemia Group (CCLG) Tissue Bank between 1993 and 2014 were obtained following informed consent from participants or their parent/guardian. A minimum of three-years follow-up was obtained for all survivors. Lymphomas were re-classified according to the World Health Organisation (WHO) Classification of Tumours of Haematopoietic and Lymphoid Tissues⁴⁰. *IG-MYC* status was confirmed by fluorescence *in situ* hybridisation (FISH) as described in supplemental methods. The cohort comprised BL (n=64), DLBCL (n=19), Burkitt-like lymphoma with 11q aberration (BLL-11q, n=5) and remaining cases which could not be fully classified (B-NHL, NOS n=7).

TP53 Mutation and 17p Copy Number Analysis

TP53 mutational status was assessed using whole-exome sequencing (WES, n=90) or Sanger sequencing of exons 5 to 8 (n=5). WES data were generated using Illumina Nextera Exome enrichment (n=89) or TWIST Human Core Exome kit (n=1) and sequenced on an Illumina NovaSeq within the Newcastle University Genomics Core Facility or Illumina HiSeq by

Eurofins Genomics (Germany). Data were analysed using the Genome Analysis Toolkit (GATK 3.7) and variants called using Mutect2. PCR products for Sanger sequencing were amplified using primers designed for *TP53* (Supplemental Table 1) and sequenced by Eurofins Genomics. WES base calls were confirmed by Sanger sequencing in 39 cases, with 100% concordance between sequencing methods.

Copy number alterations (CNAs) of 17p and other chromosomes were identified using Affymetrix Cytoscan HD, Genome-wide Human SNP Array 6.0 or OncoScan arrays performed by Eurofins Genomics. Raw data were analysed and visualised in Nexus Copy Number 10.0 (BioDiscovery) to detect CNAs and copy number neutral loss of heterozygosity (CNN-LOH) in all samples.

Chromosomal Complexity Analysis

Complex patterns of chromosomal copy number abnormality were defined as those with a fluctuation between two or more copy number states involving two or more individual segments 100kb on a chromosome arm. These included chromothripsis-like patterns of alternation between two copy number states as well as stepwise increase in copy number of chromosome arms. This definition excludes regions with heterozygous deletion followed by homozygous deletion, single regions of gain, deletion or CNN-LOH, and abnormalities affecting alternate chromosome arms.

Statistical Analyses

Estimates of overall survival (OS) and progression free survival (PFS) were calculated and compared using Kaplan-Meier methods, log-rank tests and Cox-regression models. OS was defined as the time from diagnosis to death from any cause, with censoring at the date of last contact. PFS was defined as the date of diagnosis to the time of disease progression or death. We report 3-year OS and PFS survival rates. All variables conformed to the proportional hazards assumption. Other comparisons were performed using Fisher's exact test. Analyses were performed using R Bioconductor packages 'survival' for univariate and multivariate analysis and 'survminer' for visualization of Kaplan-Meier survival curves.

Results

Patient Demographics and Clinical Characteristics

The cohort consisted of the diagnostic tumour samples from 95 UK paediatric B-NHL patients. In total 89 of the 95 (94%) cases were uniformly treated on FAB/LMB 96 protocols (trial or interim guidelines) and had complete follow-up with a median follow-up of 66.2 months (1-270.4 months) (Table 1). In keeping with previously published clinical trial cohorts^{4, 41}, the 89 FAB/LMB96-treated cases in the present study demonstrated a median age of 8 years, a male predominance of 3.4:1, a predominance (67%) of Burkitt lymphoma, a majority of high stage (III/IV) patients (73%), bone marrow disease in 18% and CNS disease in 6% of cases. *MYC* status was available for 84/89 samples (five cases failed FISH or had no available material), amongst which 63 (75%) had an *IG-MYC* translocation, including 56/58 BL, 4/16 DLBCL, 3/5 B-NHL, NOS and 0/5 BLL-11q cases. Survival estimates at 3 years for PFS and OS were 83.1% (95% CI 75.7-91.3) and 87.6% (95% CI

81.1-94.8), respectively. For those patients with disease progression (primary refractory or relapsed disease), the median time from initial diagnosis to progression was 4.5 months (range 2.8-7.7 months). The additional 6 of the 95 cases (4 BL, 1 DLBCL and 1 B-NHL, NOS) were included in the genomic analysis only.

Genomic Analysis of the *TP53* locus

TP53 mutations were found in 46/95 (48.4%) cases: 37 cases had a single non-synonymous somatic mutation, eight had two different somatic mutations and one had a germline mutation (DLBCL with Li-Fraumeni syndrome) (Figure 1A, Supplemental Table 2). *TP53* mutations were found in 37/64 (57.8%) BL, 4/19 (21.0%) DLBCL, 4/7 (57.1%) B-NHL, NOS cases and 1/5 (20.0%) BLL-11q cases. All three DLBCL cases with somatic *TP53* mutations and all four mutated B-NHL, NOS cases carried *IG-MYC* rearrangements. The 35 distinct mutations included 33 missense mutations and two deletions leading to frameshifts. All but two mutations involved the DNA binding domain and experimental data from the UMD and IARC *TP53* databases showed all but two of the mutations to be functionally deleterious^{42, 43}. As seen in other cancers^{42, 44}, the most commonly mutated residues were R175 (n=6), G245 (n=5), R248 (n=7) and R273 (n=4).

Next, we analysed 17p copy number alteration and identified deletions in 15/95 (15.8%) cases: 10/64 (15.6%) BL, 4/19 (21.0%) DLBCL and 1/7 (14.3%) B-NHL, NOS. The median region of deletion was 20.6 Mb (range 17.9-22.2 Mb), resulting in deletion of >80% of 17p (Figure 1B). Additionally, 8/95 cases (8.4%) showed CNN-LOH: 7/64 (10.9%) BL and 1/19 (5.3%) DLBCL. The median region of CNN-LOH was 19.5 Mb (range 12.9-22.3 Mb), again covering >80% of 17p (Figure 1C). All 17p deletions and CNN-LOH involved the *TP53* locus. The presence or absence of *TP53* copy number deletion was assessed by FISH in 76/95 cases: 49/64 BL, 16/19 DLBCL, 5/5 BLL-11q and 6/7 B-NHL, NOS (Supplemental Table 2). These included 12/15 cases with *TP53* deletion, 5/8 with CNN-LOH and 59/72 with neither. In each case the FISH results were concordant with the copy number array findings.

Combining the mutation and CN data for the *TP53* locus showed that abnormalities are common at presentation with 52/95 (54.7%) cases harbouring at least one abnormality and functionally inactivating biallelic events present in 26/95 (27.4%) cases (Figure 1D; Supplemental Table 2). Of the 26 cases with monoallelic *TP53* abnormalities, 20 had a single somatic heterozygous mutation (median variant allele frequency 39%, range 18-50%), four had a deletion and two had CNN-LOH. Among the 26 cases with biallelic abnormalities, 17 had *TP53* mutation together with a deletion or CNN-LOH, two had a homozygous mutation and seven had compound heterozygous mutations. The correlation between p53 protein expression and *TP53* status was assessed by p53 immunohistochemistry (IHC) in a subset of cases. In most cases *TP53* mutation was associated with overexpression of p53 protein but the correlation between p53 expression levels and *TP53* status was variable and IHC could not reliably detect the range of genomic alterations (Supplemental Table 3).

TP53 Abnormalities are Associated with Chromosomal Complexity

Genomic *TP53* alterations have been associated with genomic complexity in DLBCL and other tumours^{21, 33, 44–46}. In this study, *TP53* abnormalities were not associated with the number of CNAs or the percentage of genome altered (Supplemental Table 4). However, *TP53* abnormalities were associated with complex CN profiles of specific chromosomes. (Figure 2; Supplemental Table 5). Excluding BLL-11q, which is defined by a complex 11q rearrangement, chromosomes with complex CNAs were present in 30/51 cases with *TP53* abnormality but only in 5/39 cases with wild-type *TP53* ($p<0.001$). This association was particularly strong for BL, in which 24/40 (60%) *TP53* abnormal cases harboured a complex chromosome compared to only 1/24 (4.2%) *TP53* wild-type cases ($p=0.001$). The Li-Fraumeni syndrome case (DLBCL with *TP53* biallelic abnormality) demonstrated the highest number of complex CNAs within the whole cohort, but otherwise there was no association between *TP53* abnormalities and complex CNAs in DLBCL cases.

Most notably, complex CNAs of 1q, 11q and 13q were associated with biallelic *TP53* abnormalities ($p<0.05$) (Figure 2). Complexity of 1q typically involved stepwise increases in copy number, with only two cases having telomeric deletion (Supplemental Figure 1). Both chromosome arms 11q and 13q recurrently showed a pattern of a region of gain adjacent to telomeric deletion, similar to the profile defining BLL-11q cases⁴⁷ (Supplemental Figures 2-3). All ten cases with this characteristic gain-telomeric deletion pattern of 13q (here termed 13q^{plex}) were BL (Supplemental Table 5). The *MIR17HG* locus mapped within the region of 13q CN gain/amplification, notably located in the highest peak for 9/10 (90%) 13q^{plex} cases (Supplemental Figure 3).

Survival Analysis of TP53 Abnormalities in Paediatric B-NHL

The clinical characteristics of cases with or without a *TP53* abnormality are presented in Supplemental Table 6. Univariate survival analyses identified a significantly adverse PFS for patients with high disease stage, bone marrow involvement or high LDH (Supplemental Table 7). CNS involvement was associated with a hazard ratio of 3.0 but did not reach significance, likely due to the low number of cases ($n=5$). Those with mutations had significantly inferior 3-year survival compared to those without (PFS 66.7% (95% CI 54.2-82.0) vs 100% (95% CI 100-100), $p<0.001$ and OS 75.6% (95% CI 64.0-89.2) vs 100% (95% CI 100-100), $p<0.001$) (Supplemental Figure 4A-B), although no hazard ratio could be reported due to the absence of events in cases without *TP53* mutation. Likewise, 17p CNN-LOH involving *TP53* was also associated with worse outcome (PFS HR 4.9 (95% CI 1.6-15.6), $p=0.007$; OS HR 4.7 (95% CI 1.2-17.7), $p=0.023$) (Supplemental Figure 4C-D, Supplemental Table 7). In contrast, as previously reported in the context of the FAB/LMB96 trial, univariate analysis showed that, agnostic of *TP53* mutation status, cases with deletion of 17p including the *TP53* locus did not have inferior outcome (Supplemental Figure 4E-F, Supplemental Table 7)².

Combining the *TP53* locus alterations (Figure 3A), patients with at least one *TP53* abnormality had a significantly inferior 3-year survival compared to those with no abnormality (PFS 70.0% (95% CI 58.4-83.9) vs 100 (95% CI 100-100), $p<0.001$ and OS 78.0% (95% CI 67.3-90.4) vs 100 (95% CI 100-100), $p=0.002$) (Figure 3B-C). Importantly,

those patients without any *TP53* abnormality at initial diagnosis had a PFS of 100% (95% CI 100-100) and an OS of 100% (95% CI 100-100). Most *TP53* abnormalities were seen in patients diagnosed with BL and the presence of any *TP53* abnormality remained adversely prognostic within this subgroup (PFS 67.5% (95% CI 54.4-83.7) vs 100% (95% CI 100-100), $p=0.005$ and OS: 75% (95% CI 62.7-89.7) vs 100 (95% CI 100-100, $p=0.017$) (Supplemental Figure 5). Both monoallelic and biallelic *TP53* abnormalities were associated with adverse outcome, when compared with *TP53* wild-type cases (monoallelic PFS 76.0% (95% CI 61.0-94.7) vs 100% (95% CI 100-100), $p=0.001$ and OS 80.0% (95% CI 65.8-97.3) vs 100% (95% CI 100-100), $p=0.004$; biallelic PFS 64.0% (95% CI 47.7-85.9) vs 100% (95% CI 100-100), $p<0.001$ and OS 76.0% (95% CI 61.0-94.7) vs 100 (95% CI 100-100) $p=0.001$), but with no significant difference identified between these two groups (Figure 3D-E). There was no association between prognosis and either complex CNA patterns of 1q, 11q or 13q (Supplemental Table 8) or gain of *MIR17HG*. Neither was there a difference in outcome for patients with or without any complex CNA (PFS HR 1.7 (95% CI 0.6-4.7), $p=0.295$; OS HR 1.8 (95% CI 0.5-5.9), $p=0.332$).

Multivariate analysis was performed to assess the impact of *TP53* abnormalities alongside established high-risk clinical factors (BM and CNS involvement, stage and high LDH) (Supplemental Table 7). Due to the lack of an event amongst the *TP53* wild-type patients included in this analysis we are unable to report a hazard ratio for *TP53* status; however, having included this strong prognostic factor in the model, those established high-risk clinical factors were not independently significant.

***TP53* status risk stratifies patients with clinically defined high-risk disease**

The Inter-B-NHL ritux 2010 trial (NCT01516580) has recently demonstrated the survival benefit of adding rituximab to modified FAB/LMB96 chemotherapy for patients with high-risk disease (stage III and LDH > 2x ULN, stage IV or Burkitt leukaemia)⁵. Nevertheless, rituximab-chemotherapy was associated with increased incidence of prolonged hypogammaglobulinaemia and may be associated with a greater number of infections⁵. Given the inferior outcome of these patients prior to the use of rituximab and the unacceptable deterioration in that outcome with a previous attempt to reduce therapy intensity⁹, they represent a key group for further biomarker-driven stratification. We therefore sought to understand the prognostic impact of *TP53* abnormalities specifically in this group. High-risk patients had a higher rate of *TP53* abnormality (27/41, 66%) than low/intermediate-risk groups (20/42, 48%), but here this association was specifically within the *TP53* biallelic group ($p=0.037$) (Supplemental Table 6). As expected, the high-risk group had an inferior survival compared to the intermediate and low-risk groups (PFS 70.7% (95% CI 58.1-86.1) vs 94.7% (95% CI 87.9-100.0) vs 100.0% (95% CI 100.0-100.0), $p=0.013$) and OS 78.6% (95% CI 66.4-91.8) vs 94.7% (95% CI 87.9-100.0) vs 100.0% (95% CI 100.0-100.0), $p=0.067$) (Figure 4A-B). Strikingly, despite the substantial clinical value of stage and LDH, the absence of any *TP53* abnormality in high-risk patients remained strongly associated with an excellent clinical outcome compared to high-risk patients with any *TP53* abnormality (PFS 100% (95% CI 100-100) vs 55.6% (95% CI 39.7-77.9), $p=0.005$ and OS 100% (95% CI 100-100) vs 66.7% (95% CI 51.1-87.0), $p=0.019$) (Figure 4C-D). Stratification of the low/intermediate-risk group identified an inferior outcome for patients

with any *TP53* abnormality but this did not reach significance (PFS 100 % (95% CI 100-100) vs 90% (95% CI 77.8%-100%) vs, $p=0.133$ and OS 100% (95% CI 100-100) vs 90% (95% CI 70.7%-100%), $p=0.133$) (Supplemental Figure 6).

Biallelic *TP53* Abnormalities Evolve during Disease Progression

Very little is known about the genomic changes associated with therapy resistance and disease progression in BL or other paediatric B-NHL⁴⁸. To understand the evolution of *TP53* abnormalities associated with therapy resistance we investigated the paired biopsies taken at the time of disease progression for 7 cases and one further paired biopsy (patient BL39) taken from a viable residual tumour mass detected at routine reassessment following the CYM-1 component of FAB/LMB96 therapy. Amongst six BL cases, four had major clonal biallelic *TP53* abnormalities at the time of the original diagnosis (Figure 5 and Supplemental Table 9) and these same biallelic abnormalities were maintained at the time of disease progression. Interestingly, the other two BL cases showed acquisition of biallelic *TP53* abnormalities in the second biopsies, further supporting a role for *TP53* in treatment resistance. The first, BL23, had only a monoallelic clonal G245S mutation at diagnosis but developed CNN-LOH at relapse, rendering this mutation biallelic. The other, BL39, lacked a detectable *TP53* abnormality at initial diagnosis but the residual tumour had both a deletion of chromosome 17p and a classical pathogenic R248W mutation. Analysis of WES data failed to identify even a minor clonal R248W mutation at presentation (0/124 reads). In contrast to the BL cases, both DLBCL cases with paired material harboured a monoallelic *TP53* abnormality at both diagnosis and progression. In five of the six BL cases, therapy resistant disease was associated with an increase in the number of chromosomes showing a complex copy number profile (Figure 5).

Discussion

The addition of rituximab to first-line therapy for children with high-risk B-NHL has resulted in 93% event-free survival (EFS) in all risk groups⁵. This success requires intensive multi-agent chemotherapy and comes at the cost of significant acute toxicity and there now exists a growing understanding of the long-term sequelae⁶⁻⁸. However, with very few relapse events occurring, identifying the prognostic biomarkers required for improved risk stratification in this rare patient group has become extremely challenging. Consequently, we undertook an analysis of the prognostic significance of *TP53* status in a large national cohort of paediatric mature B-NHL cases diagnosed prior to the routine introduction of rituximab therapy. This showed that the presence or absence of *TP53* abnormalities defines two patient groups with markedly different progression-free and overall survival rates, adverse and favourable respectively.

The principal clinical challenges in paediatric B-NHL have, for some years, been: 1) improving survival in high-risk patients; 2) reducing therapy intensity without increasing risk of relapse⁹; 3) identifying mechanisms of therapy resistance which result in extremely poor survival following relapse. Addressing the first of these challenges, the international collaborative trial Inter-B-NHL ritux 2010 (NCT01516580) recently demonstrated an 11% increase in EFS in high-risk patients (defined as stage III with LDH greater than twice

the upper limit of normal, stage IV or Burkitt leukaemia) with the addition of six doses of rituximab to a modified FAB/LMB96 chemotherapy schedule⁵. This contrasts with the unacceptable reduction in survival seen in high-risk bone marrow/central nervous system positive patients randomised to reduced intensity therapy within the FAB/LMB96 study⁹. Nevertheless, within the reduced intensity arm of the high risk FAB/LMB96 study, an 80% EFS was seen, implying that only a minority of patients benefit from intensification of treatment. The inability to identify those with a low risk of treatment failure has hampered risk stratification beyond clinicopathological features. Here, we show that within the high-risk patient group, (as defined in the Inter-B-NHL trial), *TP53* wild-type patients have a very low risk of relapse, despite the absence of rituximab therapy. If validated in international trial cohorts, analysis of *TP53* status may allow identification of a subset of patients currently considered high-risk for whom chemo-immunotherapy can be de-intensified without compromising efficacy. Initially this could involve omitting rituximab but further reduction in chemotherapy similar to that attempted within FAB/LMB96, could also be considered. Our finding provides a potential biomarker platform for future trials of therapy reduction, albeit that a large number of patients and a more effective salvage strategy would be necessary for such a trial.

Critical to the better treatment of progressive or relapsed disease is a much deeper understanding of the drivers of therapy resistance. The finding that *TP53* abnormalities are associated with increased risk of disease progression, and our analysis of paired Burkitt lymphoma samples showing that all cases either maintained or developed biallelic *TP53* abnormalities at progression, suggest a key role for *TP53* loss of function in this process. In support of this assertion, Reutter *et al*⁴⁹ found multiple *TP53* abnormalities at diagnosis and relapse in each of 5 relapsed BL cases studied. Given the many biological pathways impacted by p53, the mechanisms by which *TP53* abnormalities promote therapy resistance merits further investigation in support of developing an effective salvage therapy. It is notable, therefore, that we found a strong association between *TP53* abnormalities and *MYC* rearrangements in our cohort. Since these two cancer genes cooperate to drive experimental lymphomagenesis in mice and have been associated with a particularly poor prognosis when concurrently mutated and translocated, respectively, in adult DLBCL, a deeper mechanistic understanding of the interactions between p53 and *MYC* in paediatric B-NHL may be particularly informative in this regard^{29, 32, 38}.

Mutations, present in half of cases, were the most frequent *TP53* abnormalities detected in our cohort. As expected, *TP53* deletions and CNN-LOH were less prevalent and were mostly present in tumours with *TP53* mutation^{2, 50-53}. Overall, half of all cases with a *TP53* abnormality had biallelic alterations expected to abrogate wild-type *TP53* functions at diagnosis and biallelic events were present in all BL tumours at the time of progression. However, while the presence of any *TP53* abnormality was associated with an increased risk of disease progression and death, there was no difference in PFS or OS between cases with monoallelic or biallelic alterations at diagnosis. This contrasts with recent findings in myelodysplastic syndrome and plasma cell myeloma, in which specifically biallelic *TP53* alterations at diagnosis are associated with poor survival⁵⁴⁻⁵⁶. The increasing evidence that many mutant p53 proteins exhibit gain of function or dominant negative properties may provide a partial explanation but our analysis of paired diagnosis/progression BL

samples suggests the alternative explanation that clones/subclones with monoallelic *TP53* abnormalities may evolve to a biallelic state during disease progression under the selective pressure of therapy^{32,33,57}. Interesting in this regard is the recent report of a case of relapsed BL with expansion of a low level (2% VAF) *TP53* R248Q mutation at diagnosis to a 93% VAF at relapse, secondary to a combination of clonal expansion and CNN-LOH⁵⁸.

TP53 mutations are associated with several types of genomic instability, including aneuploidy and chromothripsis, and thus increased genome complexity across the cancer spectrum^{33,44,46}. Notably, a recently described subset of adult DLBCL carrying frequent biallelic inactivation of *TP53* by mutation and 17p deletion is selectively associated with an increase in small and large CNAs^{21,45}. Similarly, an association between *TP53* abnormalities and chromothripsis-like changes, including of 13q, has been reported in adult DLBCL^{59,60}. Although we did not see an effect on global genomic complexity in our predominantly BL paediatric cohort, we did observe the correlation of *TP53* abnormalities with complex copy number patterns involving 1q, 11q and 13q. The 13q gains centred on the *MIR17HG* gene, in keeping with a previous report of an association between 17p deletion and *MIR17HG* gain in a small sample set⁵⁰. That report speculated that *MIR17HG* gain was associated with relapse but our data suggest that this probably results indirectly from the association of *MIR17HG* gain with *TP53* abnormalities⁵⁰.

We have demonstrated the clinical importance of *TP53* abnormalities in paediatric B-NHL, identifying them as a potential biomarker capable of further risk-stratifying patients currently considered high-risk. These findings now need to be validated in a large international trial cohort. For those children without a *TP53* abnormality, the risk of disease progression is extremely low and stratified trials examining therapy reduction should be considered. Evolution of biallelic abnormalities at relapse implicates *TP53* biology as a driver of therapy resistance and relapse and further understanding of the underlying mechanisms could lead to new strategies to prevent or treat therapy resistant disease.

Supplementary Material

Refer to Web version on PubMed Central for supplementary material.

Acknowledgements

This study was supported by a Blood Cancer UK Senior Bennett Fellowship (#12005), the Newcastle upon Tyne Hospitals NHS Charity, North East Promenaders Against Cancer (NEPAC), the JGW Patterson Foundation, the Little Princess Trust, the North of England Children's Cancer Research Fund (NECCR), the Good Will Cause, Cancer Research North East, the National Institute for Health Research (NIHR) Newcastle In Vitro Diagnostics Co-operative, the MRC/EPSRC Newcastle Molecular Pathology Node (NovoPath) and MRC Clinician Scientist Fellowship (MR/S021590/1). We thank all the patients, clinicians and staff who participated in the collection of material and clinical data at the Children's Cancer and Leukaemia Group (CCLG) Tissue Bank. The CCLG Tissue Bank is funded by Cancer Research UK.

References

1. Patte C, Auperin A, Gerrard M, Michon J, Pinkerton R, Spoto R, et al. Results of the randomized international FAB/LMB96 trial for intermediate risk B-cell non-Hodgkin lymphoma in children and adolescents: it is possible to reduce treatment for the early responding patients. *Blood*. 2007; Apr 1; 109 (7) 2773–2780. [PubMed: 17132719]

2. Poirel HA, Cairo MS, Heerema NA, Swansbury J, Auperin A, Launay E, et al. Specific cytogenetic abnormalities are associated with a significantly inferior outcome in children and adolescents with mature B-cell non-Hodgkin's lymphoma: results of the FAB/LMB 96 international study. *Leukemia*. 2009; Feb; 23 (2) 323–331. [PubMed: 19020548]
3. Minard-Colin V, Brugieres L, Reiter A, Cairo MS, Gross TG, Woessmann W, et al. Non-Hodgkin Lymphoma in Children and Adolescents: Progress Through Effective Collaboration, Current Knowledge, and Challenges Ahead. *Journal of clinical oncology : official journal of the American Society of Clinical Oncology*. 2015; Sep 20; 33 (27) 2963–2974. [PubMed: 26304908]
4. Cairo MS, Sposto R, Gerrard M, Auperin A, Goldman SC, Harrison L, et al. Advanced stage, increased lactate dehydrogenase, and primary site, but not adolescent age (≥ 15 years), are associated with an increased risk of treatment failure in children and adolescents with mature B-cell non-Hodgkin's lymphoma: results of the FAB LMB 96 study. *Journal of clinical oncology : official journal of the American Society of Clinical Oncology*. 2012; Feb 1; 30 (4) 387–393. [PubMed: 22215753]
5. Minard-Colin V, Auperin A, Pillon M, Burke GAA, Barkauskas DA, Wheatley K, et al. Rituximab for High-Risk, Mature B-Cell Non-Hodgkin's Lymphoma in Children. *N Engl J Med*. 2020; Jun 4; 382 (23) 2207–2219. [PubMed: 32492302]
6. Ehrhardt MJ, Chen Y, Sandlund JT, Bluhm EC, Hayashi RJ, Bechtel K, et al. Late Health Outcomes After Contemporary Lymphome Malin de Burkitt Therapy for Mature B-Cell Non-Hodgkin Lymphoma: A Report From the Childhood Cancer Survivor Study. *Journal of clinical oncology : official journal of the American Society of Clinical Oncology*. 2019; Oct 1; 37 (28) 2556–2570. [PubMed: 31283408]
7. Attarbaschi A, Carraro E, Ronceray L, Andres M, Barzilai-Birenboim S, Bomken S, et al. Second malignant neoplasms after treatment of non-Hodgkin's lymphoma—a retrospective multinational study of 189 children and adolescents. *Leukemia*. 2020; May 11. doi: 10.1038/s41375-020-0841-x
8. Srinivasan S, Roy Moulik N, Kc A, Narula G, Sankaran H, Prasad M, et al. Increased toxicities in children with Burkitt lymphoma treated with rituximab: Experience from a tertiary cancer center in India. *Pediatr Blood Cancer*. 2020. Aug 31. e28682 [PubMed: 32865865]
9. Cairo MS, Gerrard M, Sposto R, Auperin A, Pinkerton CR, Michon J, et al. Results of a randomized international study of high-risk central nervous system B non-Hodgkin lymphoma and B acute lymphoblastic leukemia in children and adolescents. *Blood*. 2007; Apr 1; 109 (7) 2736–2743. [PubMed: 17138821]
10. Anoop P, Sankpal S, Stiller C, Tewari S, Lancaster DL, Khabra K, et al. Outcome of childhood relapsed or refractory mature B-cell non-Hodgkin lymphoma and acute lymphoblastic leukemia. *Leukemia & lymphoma*. 2012; Oct; 53 (10) 1882–1888. [PubMed: 22448922]
11. Jourdain A, Auperin A, Minard-Colin V, Aladjidi N, Zsiros J, Coze C, et al. Outcome of and prognostic factors for relapse in children and adolescents with mature B-cell lymphoma and leukemia treated in three consecutive prospective “Lymphomes Malins B” protocols. A Societe Francaise des Cancers de l'Enfant study. *Haematologica*. 2015; Jun; 100 (6) 810–817. [PubMed: 25724577]
12. Rigaud C, Auperin A, Jourdain A, Haouy S, Couec ML, Aladjidi N, et al. Outcome of relapse in children and adolescents with B-cell non-Hodgkin lymphoma and mature acute leukemia: A report from the French LMB study. *Pediatr Blood Cancer*. 2019; Sep. 66 (9) e27873 [PubMed: 31207026]
13. Woessmann W, Zimmermann M, Meinhardt A, Muller S, Hauch H, Knorr F, et al. Progressive or relapsed Burkitt lymphoma or leukemia in children and adolescents after BFM-type first-line therapy. *Blood*. 2020; Apr 2; 135 (14) 1124–1132. [PubMed: 31961927]
14. Burke GAA, Beishuizen A, Bhojwani D, Burkhardt B, Minard-Colin V, Norris RE, et al. Ibrutinib plus CIT for R/R mature B-NHL in children (SPARKLE trial): initial safety, pharmacokinetics, and efficacy. *Leukemia*. 2020; Feb 18; 34 (8) 2271–2275. [PubMed: 32071430]
15. Pearson ADJ, Scobie N, Norga K, Ligas F, Chiodin D, Burke A, et al. ACCELERATE and European Medicine Agency Paediatric Strategy Forum for medicinal product development for mature B-cell malignancies in children. *Eur J Cancer*. 2019; Mar. 110: 74–85. [PubMed: 30772656]

16. Love C, Sun Z, Jima D, Li G, Zhang J, Miles R, et al. The genetic landscape of mutations in Burkitt lymphoma. *Nat Genet.* 2012; Dec; 44 (12) 1321–1325. [PubMed: 23143597]
17. Schmitz R, Young RM, Ceribelli M, Jhavar S, Xiao W, Zhang M, et al. Burkitt lymphoma pathogenesis and therapeutic targets from structural and functional genomics. *Nature.* 2012; Oct 4; 490 (7418) 116–120. [PubMed: 22885699]
18. Panea RI, Love CL, Shingleton JR, Reddy A, Bailey JA, Moormann AM, et al. The whole genome landscape of Burkitt lymphoma subtypes. *Blood.* 2019; Sep 26; 134 (19) 1598–1607. [PubMed: 31558468]
19. Grande BM, Gerhard DS, Jiang A, Griner NB, Abramson JS, Alexander TB, et al. Genome-wide discovery of somatic coding and non-coding mutations in pediatric endemic and sporadic Burkitt lymphoma. *Blood.* 2019; Jan 7; 133 (12) 1313–1324. [PubMed: 30617194]
20. Lopez C, Kleinheinz K, Aukema SM, Rohde M, Bernhart SH, Hubschmann D, et al. Genomic and transcriptomic changes complement each other in the pathogenesis of sporadic Burkitt lymphoma. *Nat Commun.* 2019; Mar 29. 10 (1) 1459 [PubMed: 30926794]
21. Chapuy B, Stewart C, Dunford AJ, Kim J, Kamburov A, Redd RA, et al. Molecular subtypes of diffuse large B cell lymphoma are associated with distinct pathogenic mechanisms and outcomes. *Nat Med.* 2018; May; 24 (5) 679–690. [PubMed: 29713087]
22. Schmitz R, Wright GW, Huang DW, Johnson CA, Phelan JD, Wang JQ, et al. Genetics and Pathogenesis of Diffuse Large B-Cell Lymphoma. *N Engl J Med.* 2018; Apr 12; 378 (15) 1396–1407. [PubMed: 29641966]
23. Reddy A, Zhang J, Davis NS, Moffitt AB, Love CL, Waldrop A, et al. Genetic and Functional Drivers of Diffuse Large B Cell Lymphoma. *Cell.* 2017; Oct 5; 171 (2) 481–494. [PubMed: 28985567]
24. Lacy SE, Barrans SL, Beer PA, Painter D, Smith AG, Roman E, et al. Targeted sequencing in DLBCL, molecular subtypes, and outcomes: a Haematological Malignancy Research Network report. *Blood.* 2020; May 14; 135 (20) 1759–1771. [PubMed: 32187361]
25. Lohr JG, Stojanov P, Lawrence MS, Auclair D, Chapuy B, Sougnez C, et al. Discovery and prioritization of somatic mutations in diffuse large B-cell lymphoma (DLBCL) by whole-exome sequencing. *Proc Natl Acad Sci U S A.* 2012; Mar 6; 109 (10) 3879–3884. [PubMed: 22343534]
26. Zhang J, Grubor V, Love CL, Banerjee A, Richards KL, Mieczkowski PA, et al. Genetic heterogeneity of diffuse large B-cell lymphoma. *Proc Natl Acad Sci U S A.* 2013; Jan 22; 110 (4) 1398–1403. [PubMed: 23292937]
27. Morin RD, Mungall K, Pleasance E, Mungall AJ, Goya R, Huff RD, et al. Mutational and structural analysis of diffuse large B-cell lymphoma using whole-genome sequencing. *Blood.* 2013; Aug 15; 122 (7) 1256–1265. [PubMed: 23699601]
28. Pasqualucci L, Trifonov V, Fabbri G, Ma J, Rossi D, Chiarenza A, et al. Analysis of the coding genome of diffuse large B-cell lymphoma. *Nat Genet.* 2011; Jul 31; 43 (9) 830–837. [PubMed: 21804550]
29. Eischen CM, Weber JD, Roussel MF, Sherr CJ, Cleveland JL. Disruption of the ARF-Mdm2-p53 tumor suppressor pathway in Myc-induced lymphomagenesis. *Genes Dev.* 1999; Oct 15; 13 (20) 2658–2669. [PubMed: 10541552]
30. Rowh MA, DeMicco A, Horowitz JE, Yin B, Yang-Iott KS, Fusello AM, et al. Tp53 deletion in B lineage cells predisposes mice to lymphomas with oncogenic translocations. *Oncogene.* 2011; Nov 24; 30 (47) 4757–4764. [PubMed: 21625223]
31. Xu-Monette ZY, Medeiros LJ, Li Y, Orlowski RZ, Andreeff M, Bueso-Ramos CE, et al. Dysfunction of the TP53 tumor suppressor gene in lymphoid malignancies. *Blood.* 2012; Apr 19; 119 (16) 3668–3683. [PubMed: 22275381]
32. Aubrey BJ, Janic A, Chen Y, Chang C, Lieschke EC, Diepstraten ST, et al. Mutant TRP53 exerts a target gene-selective dominant-negative effect to drive tumor development. *Genes Dev.* 2018; Nov 1; 32 (21–22) 1420–1429. [PubMed: 30366906]
33. Kasthuber ER, Lowe SW. Putting p53 in Context. *Cell.* 2017; Sep 7; 170 (6) 1062–1078. [PubMed: 28886379]
34. Xu-Monette ZY, Wu L, Visco C, Tai YC, Tzankov A, Liu WM, et al. Mutational profile and prognostic significance of TP53 in diffuse large B-cell lymphoma patients treated with R-CHOP:

- report from an International DLBCL Rituximab-CHOP Consortium Program Study. *Blood*. 2012; Nov 8; 120 (19) 3986–3996. [PubMed: 22955915]
35. Zenz T, Kreuz M, Fuge M, Klapper W, Horn H, Staiger AM, et al. TP53 mutation and survival in aggressive B cell lymphoma. *Int J Cancer*. 2017; Oct 1; 141 (7) 1381–1388. [PubMed: 28614910]
 36. Intlekofer AM, Joffe E, Batlevi CL, Hilden P, He J, Seshan VE, et al. Integrated DNA/RNA targeted genomic profiling of diffuse large B-cell lymphoma using a clinical assay. *Blood Cancer J*. 2018; Jun 12. 8 (6) 60. [PubMed: 29895903]
 37. Xu P, Liu X, Ouyang J, Chen B. TP53 mutation predicts the poor prognosis of non-Hodgkin lymphomas: Evidence from a meta-analysis. *PLoS One*. 2017; 12 (4) e0174809 [PubMed: 28369138]
 38. Clipson A, Barrans S, Zeng N, Crouch S, Grigoropoulos NF, Liu H, et al. The prognosis of MYC translocation positive diffuse large B-cell lymphoma depends on the second hit. *J Pathol Clin Res*. 2015; Jul; 1 (3) 125–133. [PubMed: 27347428]
 39. Campo E, Cymbalista F, Ghia P, Jager U, Pospisilova S, Rosenquist R, et al. TP53 aberrations in chronic lymphocytic leukemia: an overview of the clinical implications of improved diagnostics. *Haematologica*. 2018; Dec; 103 (12) 1956–1968. [PubMed: 30442727]
 40. Swerdlow, SH, Campo, E, Harris, NL, Jaffe, E, Pileri, SA, Stein, H, Thiele, J, Arber, DA, Hasserjian, RP, Le Beau, MM, Orazi, A. , et al. WHO Classification of Tumours of Haematopoietic and Lymphoid Tissues. Revised 4th Edition edn. International Agency for Research on Cancer (IARC); 2017.
 41. Woessmann W, Seidemann K, Mann G, Zimmermann M, Burkhardt B, Oschlies I, et al. The impact of the methotrexate administration schedule and dose in the treatment of children and adolescents with B-cell neoplasms: a report of the BFM Group Study NHL-BFM95. *Blood*. 2005; Feb 1; 105 (3) 948–958. [PubMed: 15486066]
 42. Bouaoun L, Sonkin D, Ardin M, Hollstein M, Byrnes G, Zavadil J, et al. TP53 Variations in Human Cancers: New Lessons from the IARC TP53 Database and Genomics Data. *Hum Mutat*. 2016; Sep; 37 (9) 865–876. [PubMed: 27328919]
 43. Leroy B, Anderson M, Soussi T. TP53 mutations in human cancer: database reassessment and prospects for the next decade. *Hum Mutat*. 2014; Jun; 35 (6) 672–688. [PubMed: 24665023]
 44. Donehower LA, Soussi T, Korkut A, Liu Y, Schultz A, Cardenas M, et al. Integrated Analysis of TP53 Gene and Pathway Alterations in The Cancer Genome Atlas. *Cell Rep*. 2019; Jul 30; 28 (5) 1370–1384. [PubMed: 31365877]
 45. Monti S, Chapuy B, Takeyama K, Rodig SJ, Hao Y, Yeda KT, et al. Integrative analysis reveals an outcome-associated and targetable pattern of p53 and cell cycle deregulation in diffuse large B cell lymphoma. *Cancer Cell*. 2012; Sep 11; 22 (3) 359–372. [PubMed: 22975378]
 46. Eischen CM. Genome Stability Requires p53. *Cold Spring Harb Perspect Med*. 2016; Jun 1. 6 (6) a026096 [PubMed: 27252396]
 47. Salaverria I, Martin-Guerrero I, Wagener R, Kreuz M, Kohler CW, Richter J, et al. A recurrent 11q aberration pattern characterizes a subset of MYC-negative high-grade B-cell lymphomas resembling Burkitt lymphoma. *Blood*. 2014; Feb 20; 123 (8) 1187–1198. [PubMed: 24398325]
 48. Aukema SM, Theil L, Rohde M, Bauer B, Bradtke J, Burkhardt B, et al. Sequential karyotyping in Burkitt lymphoma reveals a linear clonal evolution with increase in karyotype complexity and a high frequency of recurrent secondary aberrations. *Br J Haematol*. 2015; Sep; 170 (6) 814–825. [PubMed: 26104998]
 49. Reutter K, Sandmann S, Rohde J, Muller S, Woste M, Khanam T, et al. Reconstructing clonal evolution in relapsed and non-relapsed Burkitt lymphoma. *Leukemia*. 2020. May 14.
 50. Schiffman JD, Lorimer PD, Rodic V, Jahromi MS, Downie JM, Bayerl MG, et al. Genome wide copy number analysis of paediatric Burkitt lymphoma using formalin-fixed tissues reveals a subset with gain of chromosome 13q and corresponding miRNA over expression. *Br J Haematol*. 2011; Nov; 155 (4) 477–486. [PubMed: 21981616]
 51. Scholtysik R, Kreuz M, Klapper W, Burkhardt B, Feller AC, Hummel M, et al. Detection of genomic aberrations in molecularly defined Burkitt's lymphoma by array-based, high resolution, single nucleotide polymorphism analysis. *Haematologica*. 2010; Dec; 95 (12) 2047–2055. [PubMed: 20823134]

52. Havelange V, Pepermans X, Ameye G, Theate I, Callet-Bauchu E, Barin C, et al. Genetic differences between paediatric and adult Burkitt lymphomas. *Br J Haematol.* 2016; Apr; 173 (1) 137–144. [PubMed: 26887776]
53. Scholtysik R, Kreuz M, Hummel M, Rosolowski M, Szczepanowski M, Klapper W, et al. Characterization of genomic imbalances in diffuse large B-cell lymphoma by detailed SNP-chip analysis. *Int J Cancer.* 2015; Mar 1; 136 (5) 1033–1042. [PubMed: 25042405]
54. Thanendrarajan S, Tian E, Qu P, Mathur P, Schinke C, van Rhee F, et al. The level of deletion 17p and bi-allelic inactivation of TP53 has a significant impact on clinical outcome in multiple myeloma. *Haematologica.* 2017; Sep; 102 (9) e364–e367. [PubMed: 28550191]
55. Walker BA, Mavrommatis K, Wardell CP, Ashby TC, Bauer M, Davies F, et al. A high-risk, Double-Hit, group of newly diagnosed myeloma identified by genomic analysis. *Leukemia.* 2019; Jan; 33 (1) 159–170. [PubMed: 29967379]
56. Bernard E, Nannya Y, Hasserjian RP, Devlin SM, Tuechler H, Medina-Martinez JS, et al. Implications of TP53 allelic state for genome stability, clinical presentation and outcomes in myelodysplastic syndromes. *Nature Medicine.* 2020; 26 (10) 1549–1556.
57. Boettcher S, Miller PG, Sharma R, McConkey M, Leventhal M, Krivtsov AV, et al. A dominant-negative effect drives selection of TP53 missense mutations in myeloid malignancies. *Science.* 2019; Aug 9; 365 (6453) 599–604. [PubMed: 31395785]
58. Wever CM, Geoffrion D, Grande BM, Yu S, Alcaide M, Lemaire M, et al. The genomic landscape of two Burkitt lymphoma cases and derived cell lines: comparison between primary and relapse samples. *Leukemia & lymphoma.* 2018; Sep; 59 (9) 2159–2174. [PubMed: 29295643]
59. Karube K, Enjuanes A, Dlouhy I, Jares P, Martin-Garcia D, Nadeu F, et al. Integrating genomic alterations in diffuse large B-cell lymphoma identifies new relevant pathways and potential therapeutic targets. *Leukemia.* 2018; Mar; 32 (3) 675–684. [PubMed: 28804123]
60. Rausch T, Jones DT, Zapatka M, Stutz AM, Zichner T, Weischenfeldt J, et al. Genome sequencing of pediatric medulloblastoma links catastrophic DNA rearrangements with TP53 mutations. *Cell.* 2012; Jan 20; 148 (1–2) 59–71. [PubMed: 22265402]

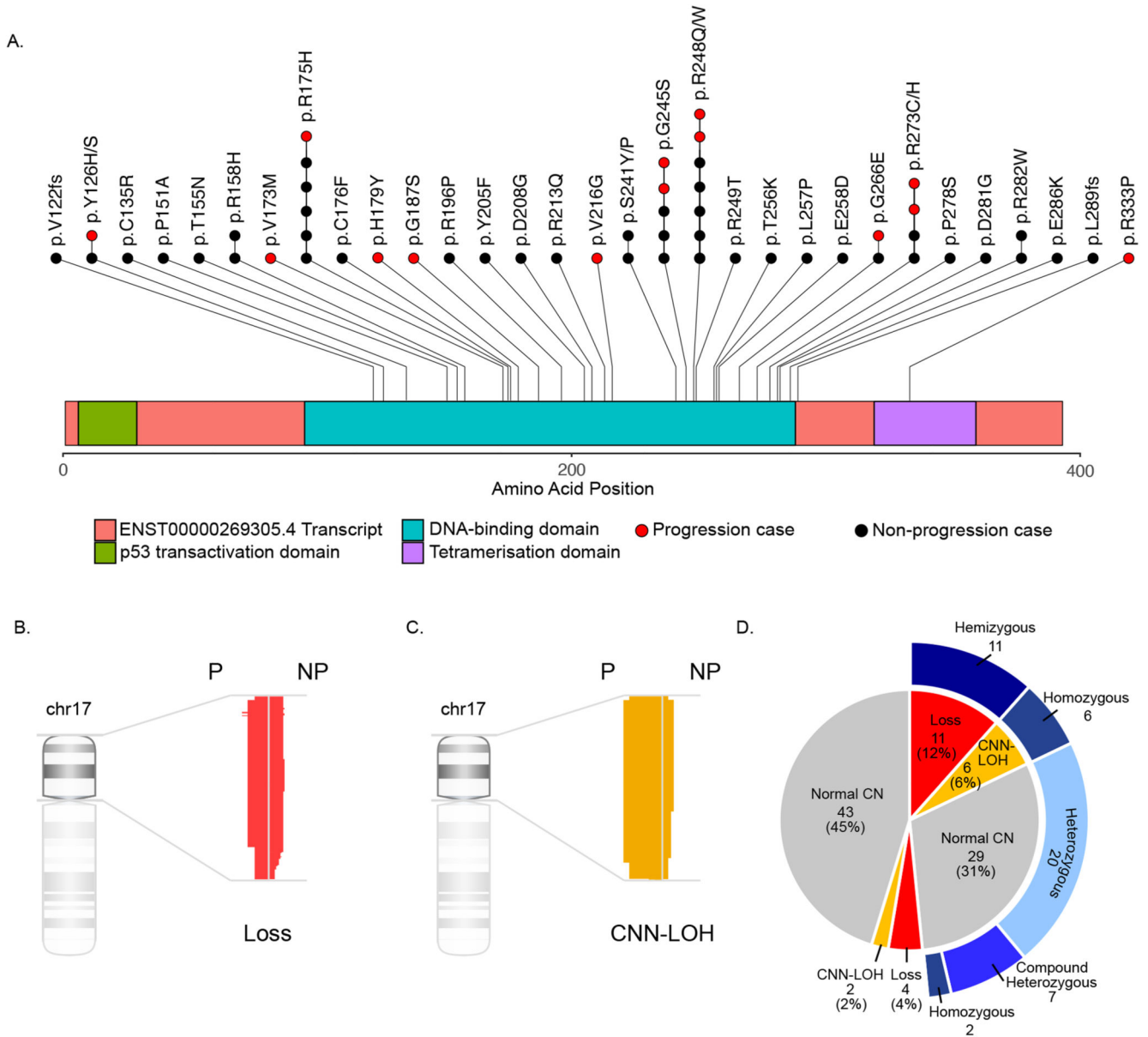


Figure 1. TP53 mutations and genomic copy number abnormalities are detected in a high proportion of paediatric B-NHL cases.
 (A) A lollipop showing 53 somatic and one germline mutation (R248Q detected in a Li-Fraumeni syndrome case). (B) Deletion of the *TP53* locus was detected in 3/14 patients with disease progression (P) and 12/78 with no disease progression (NP). (C) CNN-LOH of the *TP53* locus was detected in 5/14 patients with disease progression (P) and 3/78 with no disease progression (NP). (D) Representation of co-occurrence of *TP53* abnormalities. Inner circle represents *TP53* copy number status; outer ring represents *TP53* mutation status.

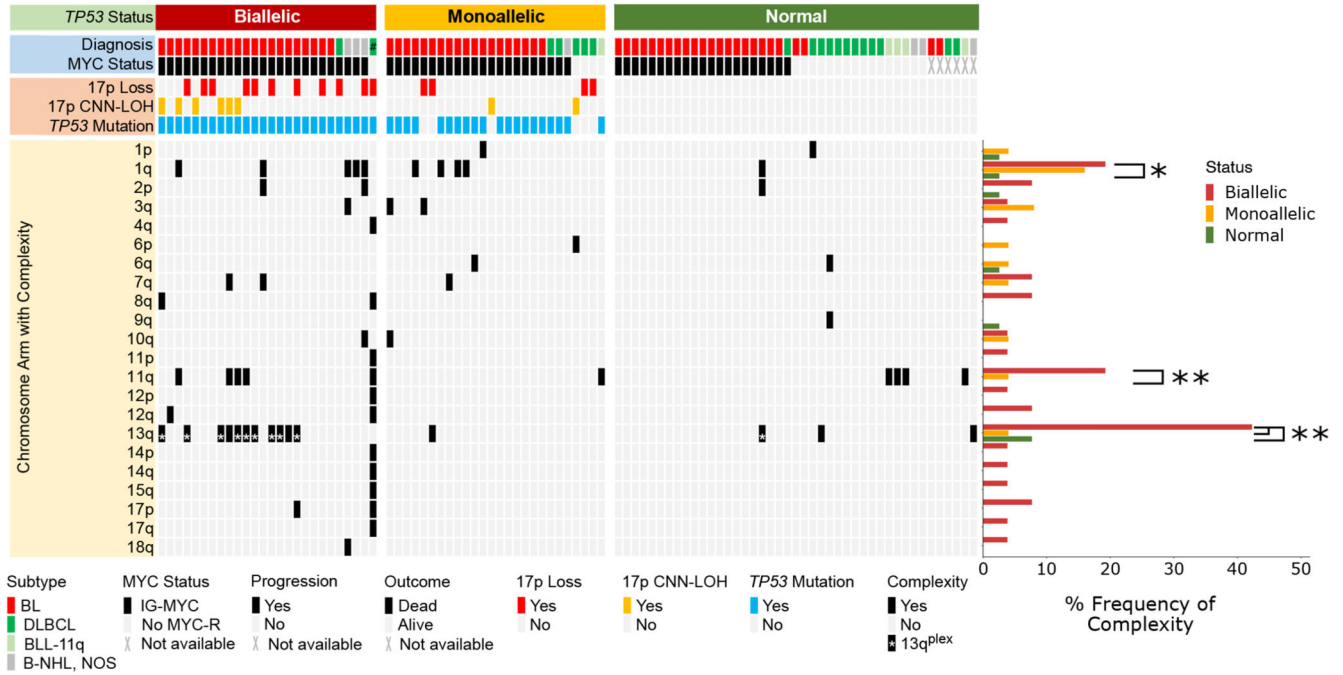


Figure 2. A pattern of complex chromosomal abnormalities in paediatric B-NHL is associated with *TP53* status.

Oncoplot showing *TP53* status (upper panel) and associated complex chromosomes (lower panel). Histogram displaying the frequency of complex abnormalities of each chromosome arm in biallelic, monoallelic and *TP53* normal groups. As a diagnosis of BLL-11q is determined by the presence of a complex 11q rearrangement, these five cases were excluded from this analysis. *TP53* Biallelic with 1q complexity vs *TP53* Normal with 1q complexity, $p=0.026$; *TP53* Biallelic with 11q complexity vs *TP53* Normal with 11q complexity, $p=0.006$. *TP53* Biallelic with 13q complexity vs *TP53* Normal with 13q complexity, $p=0.001$; *TP53* Biallelic with 13q complexity vs *TP53* Monoallelic with 13q complexity, $p=0.002$. Fisher’s Exact test $*=p<0.05$, $**=p<0.01$; # Li-Fraumeni syndrome case.

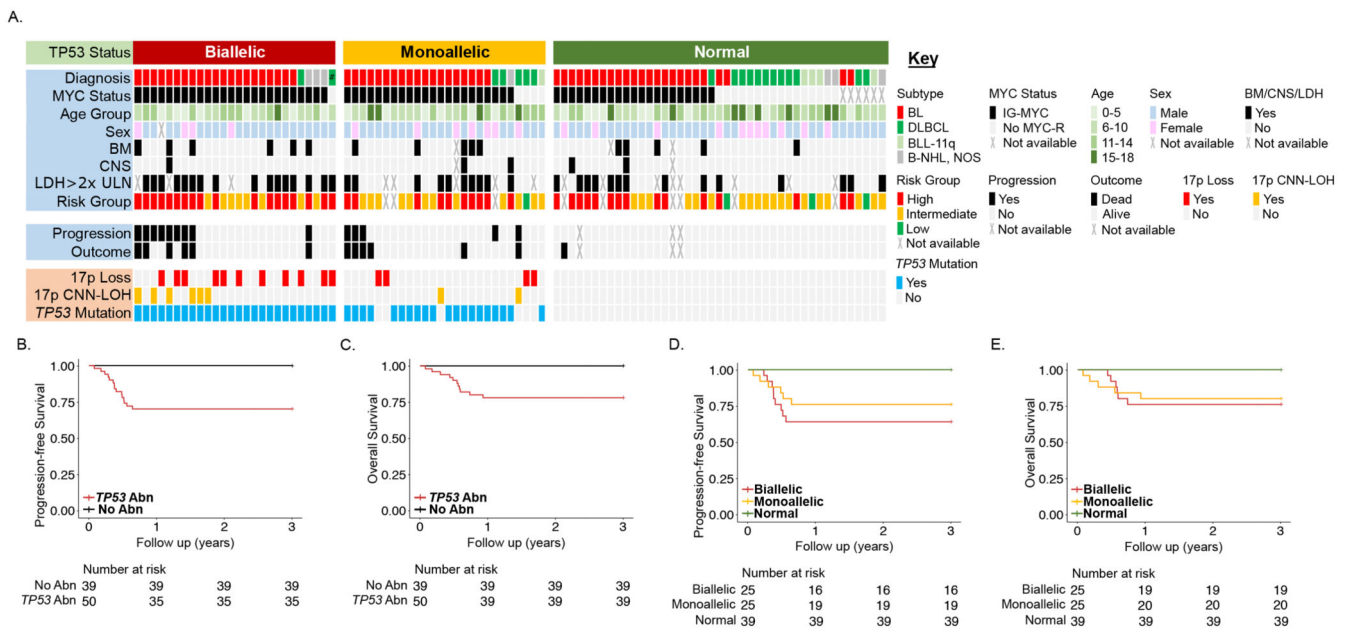


Figure 3. Identification of patient risk groups based on *TP53* status.

(A) OncoPrint showing *TP53* status with clinical and molecular parameters as described in the key. Data is plotted from left to right according to *TP53* status. Kaplan-Meier plots showing (B) progression free and (C) overall survival for any *TP53* abnormality (deletion, CNN-LOH and/or mutation), and (D) progression-free and (E) overall survival according to normal (green), monoallelic (amber) or biallelic (red) *TP53* status. # Li-Fraumeni syndrome case.

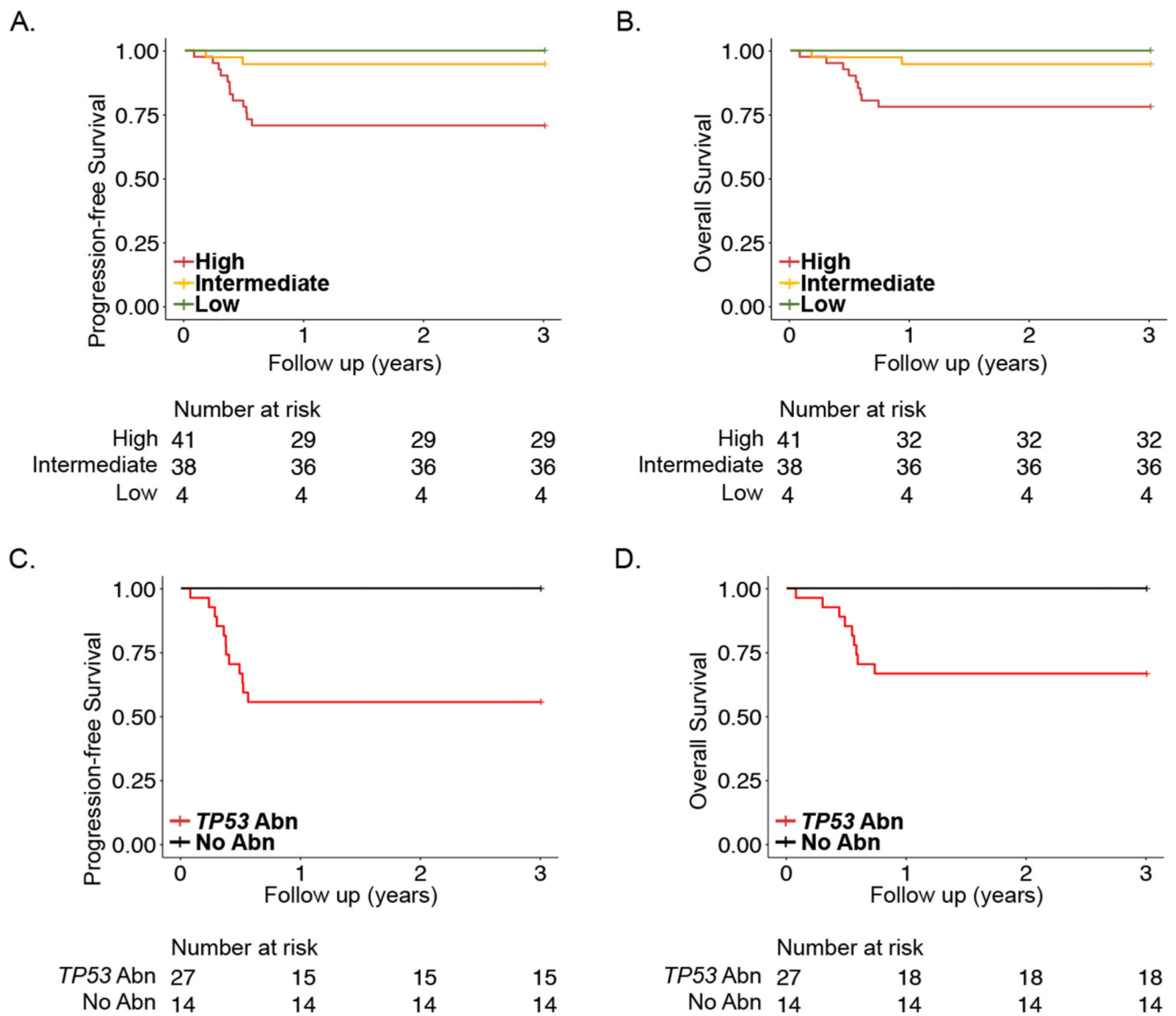


Figure 4. *TP53* status differentiates patients in the clinically defined high-risk group in paediatric B-NHL.

Kaplan-Meier plots showing (A) progression-free and (B) overall survival for high, intermediate and low clinical risk groups, and (C) progression-free and (D) overall survival in high-risk patients according to the presence of any *TP53* abnormality.

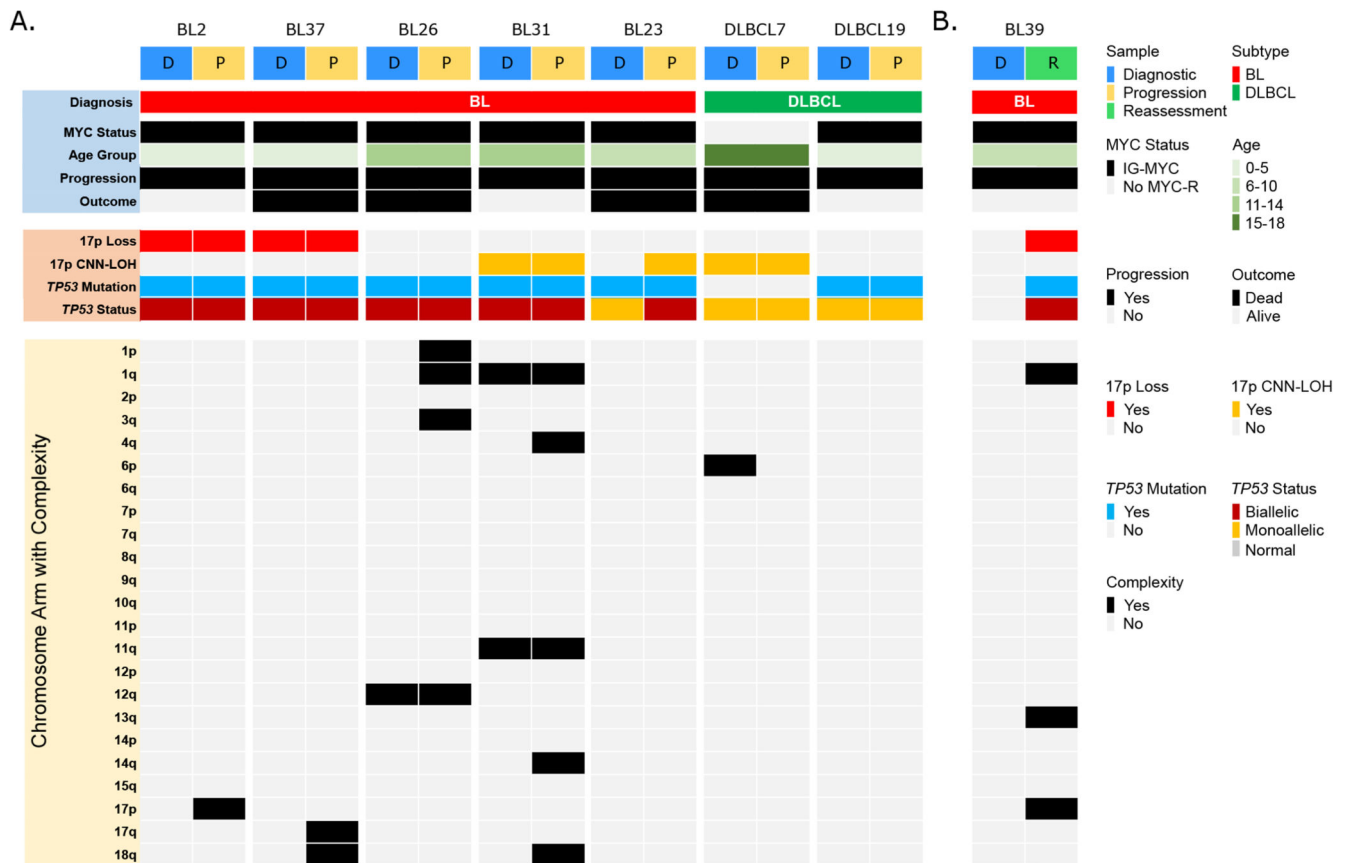


Figure 5. Biallelic TP53 abnormalities are either maintained or acquired at the time of progression of BL.

(A) Overview of clinical and molecular parameters for 7 patients with matched samples taken at initial diagnosis (D) and at the time of progression (P). (B) One patient had matched samples from initial diagnosis and the time of reassessment.

Table 1
Clinical and cytogenetic characteristics of the FAB/LMB96-treated paediatric B-NHL cases.

FAB/LMB96-treated Cohort			
		Total Cases	89
Diagnosis	BL		60 (67.4%)
	DLBCL		18 (20.2%)
	BLL-11q		5 (5.6%)
	B-NHL, NOS		6 (6.7%)
Median Age at Diagnosis (range), years			8 (0.5-17)
Sex	Male		68 (76.4%)
	Female		20 (22.5%)
	Not available		1 (1.1%)
Tumour Stage	Stage I or II		24 (27.0%)
	Stage III or IV		65 (73.0%)
	Not available		0 (0.0%)
BM Involvement	Y		16 (18.0%)
	N		71 (79.8%)
	Not available		2 (2.2%)
CNS Involvement*	Y		5 (5.6%)
	N		83 (93.3%)
	Not available		1 (1.1%)
LDH > 2x ULN	Y		38 (42.7%)
	N		38 (42.7%)
	Not available		13 (14.6%)
MYC Translocation	Y		63 (70.7%)
	N		21 (23.6%)
	Not available		5 (5.6%)
Risk Group	High		41 (46.1%)
	Intermediate		38 (42.7%)
	Low		4 (4.5%)
	Not available		6 (6.7%)
Treatment Group	Group A		4 (4.5%)
	Group B		68 (76.4%)
	Group C		15 (16.9%)
	Group unknown		2 (2.2%)
	Rituximab Added**		2 (2.2%)
	No Rituximab		84 (94.4%)
	Rituximab unknown		3 (3.4%)
Outcome	PFS	Progression / relapse	15 (16.9%)
		Median time to event (range), months	4.5 (0.9-7.7)
	OS	Deaths	11 (12.4%)

FAB/LMB96-treated Cohort	
Total Cases	89
Median time to death (range), months	6.5 (0.9-11.1)

BL = Burkitt lymphoma; DLBCL = diffuse large B-cell lymphoma; BLL-11q = Burkitt-like lymphoma with 11q aberrations; B-NHL, NOS = B-cell non-Hodgkin lymphoma not otherwise specified; Y = Yes; N= No; “-” = no event, hazard ratio not reported; BM = bone marrow; CNS = central nervous system; CSF = cerebrospinal fluid; LDH = lactate dehydrogenase; ULN = upper limit of normal. PFS = progression-free survival. OS = overall survival.

* One case had CSF involvement.

** Two cases received rituximab from the start of first-line therapy, two other patients received rituximab following switch to group C therapy following post-CYM-1 reassessment.