

Published in final edited form as:

J Antimicrob Chemother. 2022 August 29; 77(11): 3110–3117. doi:10.1093/jac/dkac290.

Pharmacokinetic and Pharmacogenetic Associations with Dolutegravir Neuropsychiatric Adverse Events in an African Population

Rulan Griesel^{1,2}, Phumla Sinxadi¹, Aida Kawuma¹, John Joska³, Simiso Sokhela⁴, Godspower Akpomemie⁴, Francois Venter⁴, Paolo Denti¹, David W. Haas^{5,6}, Gary Maartens^{*,1,2}

¹Division of Clinical Pharmacology, Department of Medicine, University of Cape Town, Cape Town, South Africa

²Wellcome Centre for Infectious Diseases Research in Africa, Institute of Infectious Disease and Molecular Medicine, University of Cape Town, Cape Town, South Africa

³HIV Mental Health Research Unit, Division of Neuropsychiatry, Department of Psychiatry and Mental Health, University of Cape Town

⁴Ezintsha, Wits Reproductive Health and HIV Institute, Faculty of Health Sciences, University of the Witwatersrand, Johannesburg, South Africa

⁵Department of Medicine, Vanderbilt University Medical Center, Nashville, Tennessee, USA

⁶Department of Internal Medicine, Meharry Medical College, Nashville, Tennessee, USA

Abstract

Background—Dolutegravir has been associated with neuropsychiatric adverse events (NPAEs), but relationships between dolutegravir concentrations and NPAEs are unclear.

Objectives—To determine in an African population whether a concentration-response relationship exists between dolutegravir and treatment-emergent NPAEs, and whether selected loss-of-function polymorphisms in genes encoding UDP-glucuronosyltransferase-1A1 (the

This work is licensed under a [CC BY 4.0](https://creativecommons.org/licenses/by/4.0/) International license.

Corresponding author: Prof Gary Maartens, Division of Clinical Pharmacology, University of Cape Town Health Sciences Faculty, Anzio road, Observatory 7925, South Africa, Phone:+27-21-2066286, gary.maartens@uct.ac.za.

Transparency Declarations

F. V. unit receives funding from the Bill and Melinda Gates Foundation, SA Medical Research Council, National Institutes for Health, AIDS Fonds, Unitaid, Foundation for Innovative New Diagnostics and the Children's Investment Fund Foundation, has recently received funding from USAID, and receives drug donations from ViiV Healthcare, Merck and Gilead Sciences for investigator-led clinical studies. The unit does investigator-led studies with Merck and ViiV providing financial support and is doing commercial drug studies for Merck. The unit performs evaluations of diagnostic devices for multiple biotech companies. Individually, he receives honoraria for talks and advisory board membership for Gilead, ViiV, Mylan, Merck, Adcock-Ingram, Aspen, Abbott, Roche, J&J and Virology Education. G. M. received paid attendance of a GlaxoSmithKline advisory board on dolutegravir in 2018. For the remaining authors none were declared. D.W.H. receives funding from the National Institutes for Health.

Author contributions: Conceptualisation: G. M. Data acquisition: S. S., G. A., F. V., P. S., and R. G. Data curation: R. G. and P. S. Formal analysis: R. G., A. K., and P. S. Funding acquisition: G. M. Methodology: G. M., R.G., P. S., A. K., J. J., P. D., and D. W. H. Writing – original draft: R.G., G. M., and P.S. Writing – review and editing: R.G., G.M., P. S., A. K., J. J., S. S., G. A., F. V., D. W. H., and P. D.

major metabolising enzyme for dolutegravir) and organic cation transporter-2 (involved in neurotransmitter transport and inhibited by dolutegravir) are associations with NPAEs.

Methods—Antiretroviral therapy-naïve participants randomised to dolutegravir-based therapy in the ADVANCE study were enrolled into a pharmacokinetic sub-study. Primary outcome was change in mental health screening (modified mini screen [MMS]) and sleep quality from baseline to weeks 4, 12, and 24. Dolutegravir exposure was estimated using a population pharmacokinetic model. Polymorphisms analyzed were *UGT1A1* rs887829 and *SLC22A2* rs316019.

Results—Data from 464 participants were available for pharmacokinetic analyses and 301 for genetic analyses. By multivariable linear regression, higher dolutegravir exposure was associated with worsening sleep quality only at week 12 (coefficient = -0.854 [95% CI -1.703 to -0.005], $P = 0.049$, but with improved MMS score at weeks 12 and 24 (coefficient = -1.255 [95% CI -2.250 to -0.261], $P = 0.013$ and coefficient = -1.199 [95% CI -2.030 to -0.368], $P = 0.005$, respectively). The *UGT1A1* and *SLC22A2* polymorphisms were not associated with change in MMS score or sleep quality.

Conclusions—Only at week 12 did we find evidence of a relationship between dolutegravir exposure and worsening sleep quality. However, higher dolutegravir exposure was associated with improved MMS scores, suggesting a possible beneficial effect.

Introduction

The WHO recommends dolutegravir-based ART as preferred first- and second-line treatment for persons living with HIV (PLWH).¹ Dolutegravir has been associated with neuropsychiatric adverse events (NPAEs), including insomnia, dizziness, anxiety, depression, headaches, and cognitive impairment. NPAEs associated with dolutegravir are generally mild, as illustrated by a <1% rate of discontinuation for NPAEs in the first year in randomised controlled trials.^{2–6} However, post-marketing cohort studies have reported higher incidences of discontinuation due to dolutegravir-related NPAEs, ranging from 1.4 to 7.2%.⁷

In a German cohort of 985 participants, NPAEs leading to dolutegravir discontinuation within 12 months were observed more frequently among the elderly and women.⁸ A population pharmacokinetic model of dolutegravir among ART-naïve PLWH reported a higher oral bioavailability among women than men, suggesting that there may be a concentration-response relationship for dolutegravir-related NPAEs.⁹ However, evidence supporting this is limited and contradictory. A Japanese study of 107 participants reported that median dolutegravir trough plasma concentrations were higher among participants with NPAEs than those without.¹⁰ A pharmacokinetic study of 40 PLWH switched to dolutegravir-based ART found no association between dolutegravir pharmacokinetic parameters and sleep or cognition changes over 180 days of follow-up,¹¹ and a retrospective case-control study found no association between dolutegravir plasma concentrations and risk of discontinuation due to NPAEs.¹² Finally, a dolutegravir population pharmacokinetic model derived from three phase 2 and 3 studies failed to show any relationship between dolutegravir exposure and selected adverse event safety endpoints (nausea, diarrhoea, and headache).⁹

Limited evidence from pharmacogenetic studies suggests that there might be a concentration-response relationship between dolutegravir and NPAEs. Dolutegravir is predominantly metabolised by uridine diphosphate (UDP)-glucuronosyltransferase 1A1 (UGT1A1).¹³ Loss of function polymorphisms (*UGT1A1**28 [rs 3064744 (TA)₇] and *UGT1A1**6 [rs 4148323 G→A]) were associated with a higher incidence of dolutegravir-related NPAEs.¹⁰ An Italian study reported that a loss of function polymorphism in the *SLC22A2* gene (rs316019 C→A) was associated with NPAEs on dolutegravir-based therapy.¹⁴ The *SLC22A2* gene encodes for organic cation transporter-2 (OCT2), which is involved in CNS monoamine clearance and is inhibited by dolutegravir at clinically observed concentrations.¹³

Current evidence is contradictory on whether a concentration-response relationship exists for dolutegravir-related NPAEs. Most research on dolutegravir-related NPAEs have not involved people of African ancestry, who have a higher allele frequency of the *UGT1A1* rs3064744 loss-of-function polymorphism than people of European ancestry.¹⁵ We aimed to establish whether dolutegravir-related NPAEs are associated with dolutegravir plasma concentrations. We also assessed whether polymorphisms associated with increased plasma dolutegravir concentrations and decreased CNS monoamine clearance are associated with dolutegravir-related NPAEs in individuals of African ancestry. We used data obtained from ART-naïve participants who were randomised to initiate dolutegravir-based treatment in the ADVANCE study.¹⁶

Methods

Study Design and Participants

The ADVANCE study was an open label randomised controlled trial conducted in Johannesburg, South Africa.¹⁶ ART-naïve participants were randomised to one of three arms: 1) dolutegravir, emtricitabine, and tenofovir disoproxil fumarate; 2) dolutegravir, emtricitabine, and tenofovir alafenamide; and 3) efavirenz, emtricitabine, and tenofovir disoproxil fumarate. Trial inclusion criteria included age ≥ 12 years, no ART use in the previous 6 months, creatinine clearance of >60 mL/minute, and HIV-1 RNA ≤ 500 copies/mL.

This pharmacology sub-study had the following inclusion criteria: adults (age ≥ 18 years); participants with sparse dolutegravir plasma samples available or consented to genetic testing; baseline, week 4, 12, and 24 sleep quality and mental health assessments. Exclusion criteria for this sub-study were participants with dolutegravir concentrations below the lower limit of quantification (LLOQ) of the assay, or values greater than four standard deviations of the participant mean (indicating improbable dose sampling times), women who became pregnant during the first 24 weeks of follow-up, and participants who received rifampicin-based antituberculosis therapy during the first 24 weeks of follow-up.

Psychiatric and Sleep Quality Assessment

Participants in the ADVANCE trial had a modified mini screen (MMS) mental health assessment at baseline, and at weeks 4, 12, and 24 of follow-up. The MMS is a 22-item

scoring questionnaire that covers current symptoms for major depression, dysthymia, suicidality, hypomania, panic, agoraphobia, social phobia, obsessive compulsive disorder, post-traumatic stress disorder (PTSD), psychosis, and generalised anxiety (Supplemental Figure 1). The score has been validated as a screening tool for mental health concerns in addiction, corrections and social service settings.^{17,18} The MMS has been utilised to identify mental health concerns that require more in-depth assessment. A score of 6 or more identifies patients with a moderate likelihood of mental illness, and to be considered for a detailed diagnostic interview. A score of 9 indicates a high likelihood of mental illness and warrants immediate referral for assessment.^{19,20} We removed two questions related to PTSD, as these involved traumatic events, which could be present prior to enrolment. At specified visits, participants were asked to rate the average quality of their sleep in a preceding 4 weeks using a Likert scale from 0 – 10 (0 worst possible quality of sleep, 10 best possible quality of sleep). Sleep quality was assessed at baseline, and at weeks 4, 12, and 24 of follow-up.

Drug Concentration Analyses

Dolutegravir plasma concentrations were determined by a validated liquid chromatography tandem mass spectrometry assay.²¹ All assays were performed at the Division of Clinical Pharmacology, University of Cape Town, Cape Town, South Africa. The laboratory participated in the Clinical Pharmacology Quality Assurance (CPQA) external quality control program under a contract with the Division of AIDS of the National Institute of Allergy and Infectious Diseases.

Pharmacokinetic Determinants and Modelling

An intensively sampled pharmacokinetic sub-study (n = 41) nested within the ADVANCE trial was used to develop a population pharmacokinetic model of dolutegravir.²¹ Four-hundred-and-thirty-one participants had sparse sampling of dolutegravir at weeks 24 and 48, with self-reported time of prior dose. The population pharmacokinetic model was used to produce individual estimates of steady-state area under the concentration-time curve over 24 hours (AUC₀₋₂₄) for 472 participants (including intensively sampled data).

Determination and Characterisation of Genetic Polymorphisms

Whole blood labelled with coded identifiers was stored and DNA extraction performed using the salting out method as described elsewhere.²² Genotyping with the Illumina Infinium Multi-Ethnic Global BeadChip (MEGA^{EX}) was done at Vanderbilt Technologies for Advanced Genomics (VANTAGE) in Nashville, Tennessee, USA. Post-genotype quality control included sex checks, call rates by marker and sample, identity by descent (IDB) plots, assessment for batch effects, concordance between duplicate samples, and HapMap controls.

Quality control steps were performed using PLINK version 1.9.^{23–25} Genotyping efficiency per participant was >95% in all samples. Markers with genotyping efficiency <95% were excluded, as were those with minor allele frequencies (MAF) <5%. We excluded 21 samples with overall genotyping call rates <95%. After quality control, data were imputed using the TOPMed reference panel after transforming to genome build 38 using

liftOver and stratification by chromosome to parallelise the imputation process.^{24,25} For each chromosome in each phase, 100% concordance with genotyped data was assessed. Polymorphisms with imputation scores <0.3, genotyping call rates <99%, MAF <0.05, or Hardy-Weinberg Equilibrium (HWE) p-values <1.0x10⁻⁸ were excluded. To control for population stratification, we used Eigenstrat/Eigensoft package 6.0.1 to estimate principal components.

The *UGT1A1* rs4148323 locus was monomorphic in our cohort, thus excluded. The *UGT1A1**28 promoter TA_n dinucleotide repeat (which confers Gilbert trait) was not directly genotyped, as it known to be in strong linkage disequilibrium with the *UGT1A1* rs887829 T allele.²⁶ For these analyses, we extracted from genome-wide genotype data two targeted polymorphisms relevant to dolutegravir metabolism (*UGT1A1* rs887829 C→T) and transport of neurotransmitters (*SLC22A2* rs316019 C→A). Participants with genotype data were classified as normal (homozygous CC for *UGT1A1* rs887829 and *SLC22A2* rs316019), intermediate (heterozygous CT and CA, for *UGT1A1* rs887829 and *SLC22A2* rs316019, respectively) and poor (homozygous TT and AA, for *UGT1A1* rs887829 and *SLC22A2* rs316019, respectively).

Statistical Analysis

Statistical analyses were performed using Stata (version 16.0; StataCorp: Stata Statistical Software, College Station, Texas, USA). Graphs were made using GraphPad Prism (version 9.0; GraphPad Software, San Diego, California, USA). Medians with IQR were used to describe continuous variables and proportions to describe categorical data.

Outcome variables included change in MMS score from baseline to weeks 4, 12, and 24, and change in sleep quality from baseline to weeks 4, 12, and 24. The primary study objective was assessment of associations between the two outcome variables and dolutegravir AUC₀₋₂₄ estimates. Secondary objectives included assessment of associations between the outcome variables, *UGT1A1* rs887829 and *SLC22A2* rs316019.

We used Spearman's rank-order correlation (r_s) to assess dolutegravir AUC₀₋₂₄ estimates with change in MMS score and change in sleep quality from baseline to weeks 4, 12, and 24. Box plots, grouped by *UGT1A1* or *SLC22A2* genotype, were used to display change in both outcome variables (change in MMS score and sleep quality) from baseline to weeks 4, 12, and 24. We used Kruskal-Wallis equality-of-populations rank test to assess for between group differences in the outcome variables.

Univariable and multivariable linear regression analyses with robust standard errors were performed to primarily assess associations between log-transformed dolutegravir AUC₀₋₂₄ estimates and outcomes (change in MMS score and sleep quality from baseline to weeks 4, 12, and 24), and secondarily assess genetic associations (*UGT1A1* rs887829 and *SLC22A2* rs316019) and the same outcomes. Separate regression models were performed at each of the three time points as evidence is lacking regarding the best time to assess for insomnia and NPAEs after starting dolutegravir. In the multivariable linear regression models, we adjusted for the following covariates selected *a priori*: baseline age, sex, CD4 T-cell

count, \log_{10} HIV-1 RNA, and nucleotide reverse transcriptase inhibitor (tenofovir disoproxil fumarate or tenofovir alafenamide).

Results

Participant flow from the parent ADVANCE study for the primary and secondary objectives is shown in Supplemental Figures 2 and 3, respectively. Four-hundred-and-sixty-four participants were available for the primary analysis and 301 participants for the secondary analysis. Baseline characteristics of participants included in primary and secondary analyses are given in Table 1.

Dolutegravir Pharmacokinetic-Pharmacodynamic Analyses

The median dolutegravir AUC_{0-24} estimate from participants in the tenofovir alafenamide ($n = 231$) and tenofovir disoproxil fumarate ($n = 233$) arms were 66.5 mg·h/L (interquartile range [IQR] 45.0 to 94.1) and 67.2 mg·h/L (IQR 54.0 to 95.3), respectively. The median dolutegravir AUC_{0-24} estimate from both arms was 66.7 mg·h/L (IQR 50.8 to 94.2).

MMS Score

The median change in MMS score from baseline to all 3 visits (week 4, 12, and 24) was 0 (IQR -1 to 0). The percentages of participants with unchanged, worsened, and improved MMS scores from baseline to weeks 4, 12, and 24 were similarly distributed between time points (Figure 1A).

Dolutegravir AUC_{0-24} was negatively correlated with change in MMS score from baseline to weeks 4, 12, and 24 (Table 2).

Univariable linear regression showed an inverse association between increasing dolutegravir AUC_{0-24} and change in MMS score from baseline to weeks 4, 12, and 24 (Supplemental Table 1). By multivariable linear regression there was a statistically significant inverse association between dolutegravir AUC_{0-24} and change in MMS score from baseline to week 12 and week 24 (Table 3), with higher dolutegravir exposure associated with more improvement from baseline in MMS.

Sleep Quality

The median change in sleep quality from baseline to all 3 visits (week 4, 12, and 24) was 0 (IQR -1 to 0). The percentages of participants with unchanged, worsened, and improved change in sleep quality from baseline to weeks 4, 12, and 24 were similarly distributed between time points (Figure 1B). Dolutegravir AUC_{0-24} and change in sleep quality from baseline to weeks 4 and 12 were negatively correlated (Table 2).

Univariable linear regression showed an inverse association between increasing dolutegravir AUC_{0-24} and change in sleep quality from baseline to weeks 4, 12, and 24 (Supplemental Table 2). By multivariable linear regression the association was statistically significant only at week 12 (Table 4). Baseline CD4 count was independently associated with decreasing sleep quality from baseline to week 12 in univariable and multivariable analyses (Table 4).

Genetic Analyses

The polymorphisms *UGT1A1* rs887829 and *SLC22A2* rs316019 were each in Hardy-Weinberg equilibrium. The minor allele frequency for *UGT1A1* rs887829 T allele was 41.6%, with genotype frequencies 34.2%, 48.4%, and 17.4% for CC, CT and TT, respectively. The minor allele frequency for *SLC22A2* rs316019 A allele was 12.5%, with genotype frequencies 76.3%, 22.4%, and 1.3% for CC, CA and AA, respectively.

Change in MMS scores from baseline to weeks 4, 12, and 24 were similar across genotypes. (Supplemental Figures 4, 5, and 6, respectively). There were no statistically significant associations between *UGT1A1* or *SLC22A2* genotypes and change in MMS score from baseline to week 4, 12, or 24 in either univariable or multivariable analyses (Supplemental Tables 1 and 3, respectively). Similarly, change in sleep quality scores from baseline to weeks 4, 12, and 24 were similar across genotypes (Supplemental Figure 4, 5, and 6, respectively). There were no significant associations between *UGT1A1* or *SLC22A2* genotypes and change in sleep quality from baseline to week 4, 12, or 24 in either univariable or multivariable analyses (Supplemental Tables 2 and 4, respectively).

Discussion

We analysed data from a randomised controlled trial (the ADVANCE study) to characterise concentration-response relationships between dolutegravir and NPAEs. We found an independent association between worsening sleep quality from baseline to week 12 and increasing estimated dolutegravir AUC₀₋₂₄. We found an unexpected independent association between more improved MMS scores from baseline to weeks 12 and 24 and increasing estimated dolutegravir AUC₀₋₂₄, suggesting a positive effect of drug exposure on NPAEs. We did not find any associations between the selected *UGT1A1* rs887829 or *SLC22A2* rs316019 polymorphisms and change in MMS score or sleep quality from baseline to weeks 4, 12, or 24.

Studies have reported conflicting results on the association between dolutegravir exposure and NPAEs. Two cross-sectional studies, conducted in Japan and Italy, reported associations between dolutegravir exposure and NPAEs.^{10,14} Limited data from prospective longitudinal studies have not shown concentration-response relationships between dolutegravir and NPAEs. A small study (n = 40) failed to show associations between dolutegravir exposure and change in sleep assessment from baseline over 6 months.¹¹ A population pharmacokinetic model derived from three phase 2 and 3 studies failed to show a relationship between dolutegravir exposure and the three most common adverse events (nausea, diarrhoea, and headache) but other NPAEs were not explored.⁹ Dolutegravir plasma concentrations were also not associated with risk for dolutegravir discontinuation secondary to observed NPAEs in a retrospective cohort of 37 participants.¹²

Our finding of improving MMS score with increasing dolutegravir exposure from baseline to weeks 12 and 24 was unexpected. Although these associations were statistically significant, the magnitude of effect was small as indicated by modest r_s values. Higher dolutegravir maximum concentrations were associated with improved global cognitive functioning in a prospective study,¹¹ which is one possible explanation for our finding. Another

possible explanation is that higher dolutegravir concentrations could be a marker for better adherence, and participants with NPAEs may have been less adherent.

Our finding that increasing dolutegravir exposure was associated with worsening sleep quality is consistent with other studies.^{10,27} Although only a change from baseline to week 12 in sleep quality was statistically significant for an association with increasing dolutegravir exposure, the r_s value for baseline to week 4 and multivariable linear regression effect coefficients for baseline to weeks 4 and 24 were in the same direction as the baseline to week 12 findings, regarding worsening sleep quality with increasing dolutegravir exposure.

We did not find associations between *UGT1A1* rs887829 or *SLC22A2* rs316019 and change in MMS score or sleep quality from baseline to weeks 4, 12, or 24. A Japanese study reported that *UGT1A1* loss-of-function polymorphisms, which result in higher dolutegravir exposure,²⁸ were associated with a higher incidence of NPAEs in PLWH who switched to a dolutegravir-based regimen.¹⁰ An Italian study found an association between *SLC22A2* rs316019 and abnormal neuropsychiatric assessments among PLWH treated with a dolutegravir-containing ART regimen.¹⁴ However, the study was cross-sectional and could not assess baseline neuropsychiatric state prior to dolutegravir initiation. Our negative findings could be due to different genetic profiles among an African population or might be due to a lack of power to establish an association.

Our study has limitations. First, our findings in an ART-naïve African population may not be generalizable to other populations - only one participant in our sample was greater than 60 years of age, which is a reported risk factor for dolutegravir NPAEs.^{8,29} Second, we performed analyses of available data from the ADVANCE study, without any formal sample size calculation. However, our study is the largest to date to explore this relationship and NPAEs were elicited by repeated standardised questionnaires in the context of a randomised controlled trial. Third, our week 4 follow-up time point assessment may have missed earlier changes in NPAE. Efavirenz-related CNS side effects were more common in *CYP2B6* poor metabolisers at 2 weeks, but this difference was no longer present at 4 weeks.³⁰ Fourth, the tools used for psychiatric and sleep quality assessment were subjective. Objective measures of sleep quality have proven superiority over subjective measures.^{31,32} Fifth, all participants in our study were ART naïve and this could potentially influence neuropsychiatric outcomes as mental wellbeing improves on treatment.³³⁻³⁶ An ART switch study might better assess concentration-response relationships between dolutegravir and treatment emergent NPAEs.³⁷ Sixth, we did not assess headache or neurocognitive impairment in our study. Finally, we did not adjust for multiple statistical comparisons.

In conclusion, we found a concentration-response relationship between dolutegravir and worsening sleep quality (not statistically significant at weeks 4 and 24). We found an unexpected association of higher dolutegravir exposure with improving MMS score. We did not replicate previous genetic associations with dolutegravir-related NPAEs reported in two cross-sectional studies.^{10,14}

Supplementary Material

Refer to Web version on PubMed Central for supplementary material.

Acknowledgements

DNA extraction from whole blood samples was done at the Sydney Brenner Institute for Molecular Bioscience (SBIMB) Biobank, Johannesburg, South Africa.

Funding

This work was supported by the Wellcome Trust through an investigator award (212265/Z/18/Z) and core funding from the Wellcome Centre for Infectious Diseases Research in Africa (203135/Z/16/Z); G.M. was supported in part by the National Research Foundation of South Africa (Grant Number 119078); P.S. was supported in part by the South African Medical Research Council under a self-initiated research grant and the National Research Foundation (Thuthuka UID113983 and the Black Academic Advancement Programme UID120647); A.K. was supported by Pharmacometrics Africa NPC. The content is solely the responsibility of the authors and does not necessarily represent the official views of the sponsors. For the purpose of open access, the author has applied a CC BY public copyright licence to any Author Accepted Manuscript version arising from this submission. The ADVANCE study is funded by Unitaid and ViiVHealthcare, with investigational product provided by ViiVHealthcare and Gilead Sciences; D.W.H. receives NIH grant support including AI077505, AI110527 and TR000445.

Data Availability Statement

The data that support the findings of this study are available from the corresponding author upon reasonable request.

References

1. World Health Organization. Updated Recommendations on First-Line and Second-Line Antiretroviral Regimens and Post-Exposure Prophylaxis and Recommendations on Early Infant Diagnosis of HIV: Interim Guidelines Supplement to the 2016 Consolidated Guidelines on the Use of Antiretroviral.
2. Van Lunzen J, Maggiolo F, Arribas JR, et al. Once daily dolutegravir (S/GSK1349572) in combination therapy in antiretroviral-naïve adults with HIV: Planned interim 48 week results from SPRING-1, a dose-ranging, randomised, phase 2b trial. *Lancet Infect Dis*. 2012; 12: 111–118. [PubMed: 22018760]
3. Walmsley SL, Antela A, Clumeck N, et al. Dolutegravir plus Abacavir-Lamivudine for the treatment of HIV-1 infection. *N Engl J Med*. 2013; 369: 1807–1818. [PubMed: 24195548]
4. Raffi F, Rachils A, Stellbrink HJ, et al. Once-daily dolutegravir versus raltegravir in antiretroviral-naïve adults with HIV infection: 48 week results from the randomised, double-blind, non-inferiority SPRING-2 study. *Lancet*. 2013; 381: 735–743. [PubMed: 23306000]
5. Clotet B, Feinberg J, Van Lunzen J, et al. Once-daily dolutegravir versus darunavir plus ritonavir in antiretroviral-naïve adults with HIV-1 infection (FLAMINGO): 48 week results from the randomised open-label phase 3b study. *Lancet*. 2014; 383: 2222–2231. [PubMed: 24698485]
6. Orrell C, Hagins DP, Belonosova E, et al. Fixed-dose combination dolutegravir, abacavir, and lamivudine versus ritonavir-boosted atazanavir plus tenofovir disoproxil fumarate and emtricitabine in previously untreated women with HIV-1 infection (ARIA): week 48 results from a randomised, open-label. *Lancet HIV*. 2017; 4: e536–46. [PubMed: 28729158]
7. Hoffmann C, Libre JM. Neuropsychiatric adverse events with dolutegravir and other integrase strand transfer inhibitors. *AIDS Rev*. 2019; 21: 4–10. [PubMed: 30899113]
8. Hoffmann C, Welz T, Sabranski M, et al. Higher rates of neuropsychiatric adverse events leading to dolutegravir discontinuation in women and older patients. *HIV Med*. 2017; 18: 56–63. [PubMed: 27860104]
9. Zhang J, Hayes S, Sadler BM, et al. Population pharmacokinetics of dolutegravir in HIV-infected treatment-naïve patients. *Br J Clin Pharmacol*. 2018; 20: 14–26.

10. Yagura H, Watanabe D, Kushida H, et al. Impact of UGT1A1 gene polymorphisms on plasma dolutegravir trough concentrations and neuropsychiatric adverse events in Japanese individuals infected with HIV-1. *BMC Infect Dis.* 2017; 17: 622. [PubMed: 28915895]
11. Elliot ER, Wang X, Singh S, et al. Increased dolutegravir peak concentrations in people living with HIV aged 60 and over and analysis of sleep quality and cognition. *Clin Infect Dis.* 2019; 68: 87–95. [PubMed: 29771285]
12. Hoffmann, C; Wolf, E; Schewe, K; , et al. CNS toxicity of dolutegravir is not associated with psychiatric conditions or higher plasma exposure; Twenty ninth Conference on Retroviruses and Opportunistic Infections, Boston, Massachusetts, USA; Abstract #424
13. Reese MJ, Savina PM, Generaux GT, et al. In vitro investigations into the roles of drug transporters and metabolizing enzymes in the disposition and drug interactions of dolutegravir, an HIV integrase inhibitor. *Drug Metab Dispos.* 2013; 41: 353–361. [PubMed: 23132334]
14. Borghetti A, Calcagno A, Lombardi F, et al. SLC22A2 variants and dolutegravir levels correlate with psychiatric symptoms in persons with HIV. *J Antimicrob Chemother.* 2019; 74: 1035. [PubMed: 30561642]
15. Guillemette C. Pharmacogenomics of human UDP-glucuronosyltransferase enzymes. *Pharmacogenomics J.* 2003; 3: 136–158. [PubMed: 12815363]
16. Venter WDF, Moorhouse M, Sokhela S, et al. Dolutegravir plus two different prodrugs of tenofovir to treat HIV. *N Engl J Med.* 2019; 381: 803–815. [PubMed: 31339677]
17. Alexander MJ, Haugland G, Lin SP, et al. Mental health screening in addiction, corrections and social service settings: Validating the MMS. *Int J Ment Health Addict.* 2008; 6: 105–119.
18. OASAS. Screening for co-occurring disorders: User-guide for the Modified Mini Screen (MMS). Office of Addiction Services and Supports; Albany, NY, USA; 2014. <https://oasas.ny.gov/screening-mental-health-disorders-certified-treatment-programs>
19. Segal SP, Khoury VC, Salah R, et al. Contributors to screening positive for mental illness in Lebanon's Shatila Palestinian refugee camp. *J Nerv Ment Dis.* 2018; 206: 46–51. [PubMed: 28976407]
20. Bright S, Walsh K, Williams C. Point Prevalence and Patterns of Mental Health Comorbidity Among People Accessing Australia's First Older Adult-Specific Alcohol and Other Drug Treatment Service. *J Dual Diagn.* 2018; 14: 70–75. [PubMed: 29023223]
21. Griesel R, Kawuma AN, Wasmann R, et al. Concentration-response relationships of dolutegravir and efavirenz with weight change after starting antiretroviral therapy. *Br J Clin Pharmacol.* 2021; doi: 10.1111/bcp.15177
22. Miller SA, Dykes DD, Polesky HF. A simple salting out procedure for extracting DNA from human nucleated cells. *Nucleic Acids Res.* 1988; 16: 1215 [PubMed: 3344216]
23. Purcell S, Neale B, Todd-Brown K, et al. PLINK: A tool set for whole-genome association and population-based linkage analyses. *Am J Hum Genet.* 2007; 81: 559–575. [PubMed: 17701901]
24. Taliun D, Harris DN, Kessler MD, et al. Sequencing of 53,831 diverse genomes from the NHLBI TOPMed Program. *Nature.* 2021; 590: 290–299. [PubMed: 33568819]
25. Lift Genome Annotations. <https://genome.ucsc.edu/cgi-bin/hgLiftOver>
26. Gammal RS, Court MH, Haidar CE, et al. Clinical Pharmacogenetics Implementation Consortium (CPIC) Guideline for UGT1A1 and Atazanavir Prescribing. *Clin Pharmacol Ther.* 2016; 99: 363–369. [PubMed: 26417955]
27. Menard A, Mantagnac C, Solas C, et al. Neuropsychiatric adverse effects on dolutegravir: an emerging concern in Europe. *AIDS.* 2017; 31: 1201–1203. [PubMed: 28441180]
28. Chen S, St Jean P, Borland J, et al. Evaluation of the effect of UGT1A1 polymorphisms on dolutegravir pharmacokinetics. *Pharmacogenomics.* 2014; 15: 9–16. [PubMed: 24329186]
29. Bonfanti P, Madeddu G, Gulminetti R, et al. Discontinuation of treatment and adverse events in an Italian cohort of patients on dolutegravir. *AIDS.* 2017; 31: 455–457. [PubMed: 28079544]
30. Haas DW, Ribaudo HJ, Kim RB, et al. Pharmacogenetics of efavirenz and central nervous system side effects: An Adult AIDS Clinical Trials Group study. *Aids.* 2004; 18: 2391–2400. [PubMed: 15622315]
31. Krystal AD, Edinger JD. Measuring sleep quality. *Sleep Med.* 2008; 9 (Suppl 1) 10–17.

32. Landry GJ, Best JR, Liu-Ambrose T. Measuring sleep quality in older adults: A comparison using subjective and objective methods. *Front Aging Neurosci.* 2015; 7: 1–10. [PubMed: 25653617]
33. Cysique LA, Brew BJ. Neuropsychological functioning and antiretroviral treatment in HIV/AIDS: A review. *Neuropsychol Rev.* 2009; 19: 169–185. [PubMed: 19424802]
34. Sacktor N, Nakasujja N, Okonkwo O, et al. Longitudinal neuropsychological test performance among HIV seropositive individuals in Uganda. *J Neurovirol.* 2013; 19: 48–56. [PubMed: 23315423]
35. Beard J, Feeley F, Rosen S. Economic and quality of life outcomes of antiretroviral therapy for HIV/AIDS in developing countries: A systematic literature review. *AIDS Care - Psychol Socio-Medical Asp AIDS/HIV.* 2009; 21: 1343–1356.
36. Dutra BS, Léo AP, Lins-Kusterer L, et al. Changes health-related quality of life in HIV-infected patients following initiation of antiretroviral therapy: a longitudinal study. *Brazilian J Infect Dis.* 2019; 23: 211–217.
37. Chan P, Goh O, Kroon E, et al. Neuropsychiatric outcomes before and after switching to dolutegravir-based therapy in an acute HIV cohort. *AIDS Res Ther.* 2020; 17: 1–7. [PubMed: 31907064]

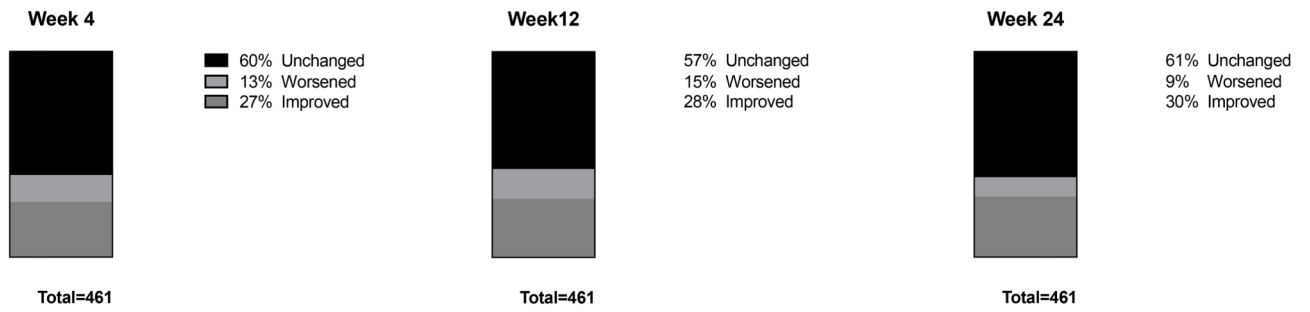
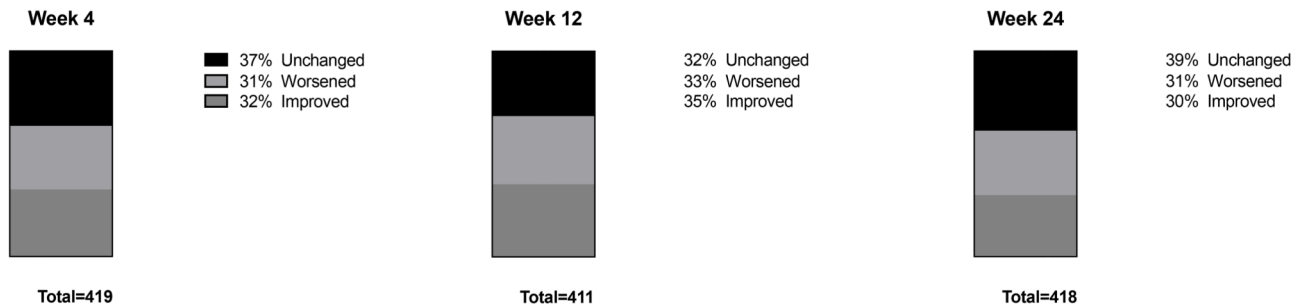
A**B**

Figure 1. Stacked bar graphs representing percentage of participants in the primary analysis with unchanged, worsened, and improved modified mini screen score (A) and sleep quality (B) from baseline to week 4, 12, and 24.

Table 1

Baseline characteristics of participants included in the primary analysis (assessment of associations between the outcome variables and dolutegravir AUC₀₋₂₄ estimates) and secondary analysis (assessment of associations between the outcome variables and polymorphisms for *UGT1A1* rs887829 C→T and *SLC22A2* rs316019 C→A).

Baseline characteristics	Primary analysis (n=464)	Secondary analysis (n=301)
Age, years (median, IQR)	32 (27 – 38)	32 (27 – 38)
Sex		
Female, %	58.6	61.5
Male, %	41.4	38.5
Race		
Black, %	100	99.7
Mixed, %	0	0.3
CD4 count, cells/mm³ (median, IQR)	282 (165 – 442)	292 (161 – 457)
HIV-1 RNA log₁₀, copies/mL (median, IQR)	4.4 (3.8 – 4.9)	4.4 (3.8 – 4.9)
TAF/TDF arm		
TAF, %	49.8	51.2
TFD, %	50.2	48.8
MMS score, (median, IQR)	0 (0 – 1)	0 (0 – 1)
Sleep quality, (median, IQR)	9 (8 – 10)	9 (8 – 10)

IQR=interquartile range, RNA= ribonucleic acid, TAF = tenofovir alafenamide, TDF = tenofovir disoproxil fumarate, MMS = modified mini screen

Table 2

Spearman's rank-order correlations for dolutegravir AUC₀₋₂₄ estimates and change in modified mini screen score and sleep quality form baseline to weeks 4, 12, and 24

Time Point	Spearman's rank-order correlation for dolutegravir AUC ₀₋₂₄ and change in MMS form baseline				Spearman's rank-order correlation for dolutegravir AUC ₀₋₂₄ and change in sleep quality form baseline			
	n	r_s	95% CI	p-value	n	r_s	95% CI	p-value
Week 4	461	-0.062	-0.153 to 0.029	0.186	419	-0.036	-0.127 to 0.056	0.468
Week 12	461	-0.099	-0.188 to -0.011	0.033	411	-0.101	-0.201 to -0.001	0.041
Week 24	461	-0.129	-0.222 to -0.036	0.006	418	0.002	-0.098 to 0.101	0.968

AUC₀₋₂₄ = area under the concentration-time curve, MMS = modified mini score, r_s = Spearman's rank-order correlation

Table 3

Multivariable linear regression for change in modified mini screen score from baseline to week 4, week 12, and week 24 among participants with available estimated dolutegravir AUC₀₋₂₄ concentrations

	Multivariable associations Week 4 (n=461)			Multivariable associations Week 12 (n=461)			Multivariable associations Week 24 (n=461)		
	Coefficient (95% CI)	p-value		Coefficient (95% CI)	p-value		Coefficient (95% CI)	p-value	
Age (per 10 years increase)	-0.214 (-0.528 to 0.100)	0.181		-0.155 (-0.427 to 0.118)	0.265		-0.119 (-0.342 to 0.104)	0.296	
Sex									
Female			Referent group						
Male	0.111 (-0.263 to 0.486)	0.559		0.167 (-0.173 to 0.507)	0.336		0.109 (-0.188 to 0.406)	0.472	
Baseline CD4 count (per 50 cells/mm ³ increase)	-0.045 (-0.104 to 0.015)	0.141		-0.019 (-0.076 to 0.039)	0.521		-0.027 (-0.075 to 0.020)	0.258	
Baseline HIV-1 RNA (per 1 log ₁₀ increase)	-0.140 (-0.394 to 0.114)	0.280		-0.133 (-0.394 to 0.127)	0.315		-0.115 (-0.324 to 0.094)	0.281	
Arm									
TAF			Referent group						
TDF	-0.161 (-0.537 to 0.216)	0.402		-0.009 (-0.365 to 0.348)	0.962		-0.107 (-0.409 to 0.194)	0.486	
DTG AUC ₀₋₂₄ (mg·h/L) (per 1 log ₁₀ increase)	-0.826 (-2.037 to 0.385)	0.181		-1.278 (-2.250 to -0.306)	0.010		-1.145 (-1.953 to -0.338)	0.006	

TAF = tenofovir alafenamide, TDF = tenofovir disoproxil fumarate, DTG = dolutegravir, AUC₀₋₂₄ = area under the concentration-time curve, PK = pharmacokinetics

Table 4

Multivariable linear regression for change in sleep quality from baseline to week 4, week 12, and week 24 among participants with available estimated dolutegravir AUC₀₋₂₄ concentrations

	Multivariable associations Week 4 (n=419)		Multivariable associations Week 12 (n=411)		Multivariable associations Week 24 (n=418)	
	Coefficient (95% CI)	p-value	Coefficient (95% CI)	p-value	Coefficient (95% CI)	p-value
Age (per 10 years increase)	-0.205 (-0.389 to -0.021)	0.029	-0.142 (-0.319 to 0.035)	0.115	-0.043 (-0.228 to 0.142)	0.646
Sex						
Female	Referent group					
Male	0.060 (-0.235 to 0.354)	0.690	0.002 (-0.290 to 0.295)	0.987	-0.019 (-0.320 to 0.281)	0.899
Baseline CD4 count (per 50 cells/mm ³ increase)	0.003 (-0.028 to 0.034)	0.871	-0.030 (-0.059 to -0.001)	0.049	-0.015 (-0.044 to 0.015)	0.338
Baseline HIV-1 RNA (per 1 log ₁₀ increase)	0.095 (-0.117 to 0.306)	0.379	-0.023 (-0.238 to 0.193)	0.837	0.069 (-0.124 to 0.261)	0.484
Arm						
TAF	Referent group					
TDF	0.205 (-0.078 to 0.487)	0.155	0.187 (-0.097 to 0.471)	0.197	0.023 (-0.266 to 0.313)	0.875
DTG AUC ₀₋₂₄ (mg·h/L) (per 1 log ₁₀ increase)	-0.552 (-1.343 to 0.239)	0.171	-0.854 (-1.703 to -0.005)	0.049	-0.096 (-0.854 to 0.663)	0.804

TAF = tenofovir alafenamide, TDF = tenofovir disoproxil fumarate, DTG = dolutegravir, AUC₀₋₂₄ = area under the concentration-time curve, PK = pharmacokinetics