

Published in final edited form as:

Eur J Hum Genet. 2016 August ; 24(9): 1262–1267. doi:10.1038/ejhg.2016.19.

Clinical, neuroradiological and molecular characterization of cerebellar dysplasia with cysts (Poretti-Boltshauser syndrome)

Alessia Micalizzi, BSc^{#1,2}, Andrea Poretti, MD^{#3,4}, Marta Romani, PhD¹, Monia Ginevrino, BSc¹, Tommaso Mazza, PhD¹, Chiara Aiello, BSc⁵, Ginevra Zanni, MD⁵, Bastian Baumgartner, MD⁶, Renato Borgatti, MD⁷, Knut Brockmann, MD⁸, Ana Camacho, MD⁹, Gaetano Cantalupo, MD¹⁰, Martin Haeusler, MD¹¹, Christiane Hikel, MD¹², Andrea Klein, MD³, Giorgia Mandrile, MD¹³, Eugenio Mercuri, MD¹⁴, Dietz Rating, MD¹⁵, Romina Romaniello, MD⁷, Filippo Maria Santorelli, MD¹⁶, Mareike Schimmel, MD¹⁷, Luigina Spaccini, MD¹⁸, Serap Teber, MD¹⁹, Arpad von Moers, MD²⁰, Sarah Wente, MD⁸, Andreas Ziegler, MD²¹, Andrea Zonta, MD¹³, Enrico Bertini, MD⁵, Eugen Boltshauser, MD^{3,#}, and Enza Maria Valente, MD, PhD^{1,22,#}

¹CSS-Mendel Institute, IRCCS Casa Sollievo della Sofferenza, San Giovanni Rotondo, Italy

²Department of Biological and Environmental Sciences, University of Messina, Messina, Italy

³Department of Pediatric Neurology, University Children's Hospital, Zurich, Switzerland ⁴Section

of Pediatric Neuroradiology, Division of Pediatric Radiology, Russell H. Morgan Department of Radiology and Radiological Science, The Johns Hopkins University School of Medicine,

Baltimore, MD, USA ⁵Laboratory of Molecular Medicine, Unit of Neuromuscular and

Neurodegenerative Disorders, Department of Neurosciences, Bambino Gesù Children's Hospital, IRCCS, Rome, Italy ⁶Pediatric Neurology, Children's Hospital, Landshut, Germany

⁷Neuropsychiatry and Neurorehabilitation Unit, Scientific Institute IRCCS Eugenio Medea, Bosisio Parini, Lecco, Italy ⁸Interdisciplinary Pediatric Center for Children with Developmental Disabilities

and Severe Chronic Disorders, Department of Pediatrics and Adolescent Medicine, University of Goettingen, Goettingen, Germany ⁹Section of Pediatric Neurology, Hospital Universitario 12 de

Octubre, Department of Medicine, Universidad Complutense, Madrid, Spain ¹⁰Child

Neuropsychiatry, Department of Surgical Sciences, Dentistry, Gynecology and Pediatrics,

University of Verona, Verona, Italy ¹¹Department of Pediatrics, Division of Neuropediatrics and

Social Pediatrics, University Hospital, RWTH Aachen, Aachen, Germany ¹²Social Pediatric

Centrum (SPZ), St. Vinzenz Hospital, Dinslaken, Germany ¹³SCDU Medical Genetics, Hospital

Città della Salute e della Scienza di Torino, Turin, Italy ¹⁴Paediatric Neurology Unit, Catholic

University, Rome, Italy ¹⁵Pediatrics, St. Marien and St. Anna Hospital, Ludwigshafen, Germany

¹⁶IRCCS Stella Maris, Pisa, Italy ¹⁷Division of Pediatric Neurology, Children's Hospital, Klinikum

Augsburg, Augsburg, Germany ¹⁸Clinical Genetic Unit, Department of Women, Mother and

Users may view, print, copy, and download text and data-mine the content in such documents, for the purposes of academic research, subject always to the full Conditions of use:http://www.nature.com/authors/editorial_policies/license.html#terms

#Corresponding author: Enza Maria Valente, MD, PhD CSS-Mendel Institute Viale Regina Margherita 261 00198 Rome, Italy ph: +39 06 4416 0537 fax: +39 06 4416 0548 eugen.boltshauser@bluewin.ch or e.valente@css-mendel.it.

Conflict of Interest

The authors declare that they have no conflict of interest.

“Supplementary information is available at European Journal of Human Genetics's website”

Neonates, “Vittore Buzzi” Children Hospital, Istituti Clinici di Perfezionamento, Milan, Italy
¹⁹Department of Pediatric Neurology, Ankara Pediatrics, Hematology-Oncology Training and Research Hospital, Ankara, Turkey ²⁰Department of Pediatrics, DRK Kliniken Berlin Westend, Berlin, Germany ²¹Division of Pediatric Neurology, University Children’s Hospital Heidelberg, Germany ²²Section of Neurosciences, Department of Medicine and Surgery, University of Salerno, Salerno, Italy

These authors contributed equally to this work.

Abstract

Cerebellar dysplasia with cysts and abnormal shape of the fourth ventricle, in the absence of significant supratentorial anomalies and of muscular involvement, defines recessively inherited Poretti-Boltshauser syndrome (PBS). Clinical features comprise non-progressive cerebellar ataxia, intellectual disability of variable degree, language impairment, ocular motor apraxia and frequent occurrence of myopia or retinopathy. Recently, loss-of-function variants in the *LAMA1* gene were identified in six probands with PBS.

Here we report the detailed clinical, neuroimaging and genetic characterization of 18 PBS patients from 15 unrelated families. Biallelic *LAMA1* variants were identified in 14 families (93%). The only non-mutated proband presented atypical clinical and neuroimaging features, challenging the diagnosis of PBS. Sixteen distinct variants were identified, which were all novel. In particular, the frameshift variant c.[2935delA] recurred in six unrelated families on a shared haplotype, suggesting a founder effect. No *LAMA1* variants could be detected in 27 probands with different cerebellar dysplasias or non-progressive cerebellar ataxia, confirming the strong correlate between *LAMA1* variants and PBS.

Keywords

cerebellar dysplasia; cerebellar cysts; LAMA1; Poretti-Boltshauser syndrome; non-progressive cerebellar ataxia; founder variant

Introduction

Cerebellar malformations comprise a wide range of developmental defects of the cerebellum that are often associated with morphological anomalies of the brainstem, present typically within the first months of life, and have a non-progressive course. For some cerebellar malformations such as Joubert syndrome (JS), Dandy-Walker malformation, and rhombencephalosynapsis, specific diagnostic criteria have been established based on neuroimaging findings, and the diagnosis relies purely on the unique neuroimaging phenotype.¹⁻³ Other cerebellar malformations, however, are characterized by less specific cerebellar imaging findings such as hypoplasia, dysplasia, and cysts.⁴⁻⁶ These findings may be isolated or occur as part of more complex diseases, and their diagnostic definition is more challenging. In the last decade, progress and increasing experience with neuroimaging techniques and genetic analysis have greatly improved the diagnostic yield of cerebellar malformations, thanks to the better neuroimaging-based delineation and the identification of

several causative genes. In a large proportion of patients, however, the underlying cerebellar malformations remains poorly defined.

Recently, we delineated a novel autosomal recessive cerebellar malformations that is characterized on neuroimaging by cerebellar dysplasia with cysts (CDC), with an enlarged, elongated and square-like shaped fourth ventricle.⁷ Additional common findings include hypoplasia of the cerebellar vermis and mild brainstem abnormalities such as elongated midbrain or short pons, while malformations of cortical development are consistently absent. The clinical phenotype is also rather homogeneous: all the seven children originally described presented non-progressive cerebellar ataxia, intellectual disability of variable degree and language impairment, without any muscular involvement. Ocular motor apraxia and myopia were also common.⁷ This novel disease was subsequently termed Poretti-Boltshauser syndrome (PBS, MIM #615960).⁸ The lack of significant supratentorial anomalies and of muscular involvement clearly distinguish PBS from alpha-dystroglycanopathies and *GPR56*-related bilateral fronto-parietal polymicrogyria, that are both characterized by frequent CDC.⁵

In 2014, variants in the *LAMA1* gene (MIM*150320) were identified in an independent cohort of five probands with PBS, and in a sixth family presenting mild cerebellar dysplasia without cysts.⁸ Motor delay, abnormal ocular movements, and myopia were detected in all patients, while language delay and intellectual disability were inconsistent findings. In addition, all patients presented some degree of retinal involvement including full-blown retinal dystrophy in some of them. From a neuroimaging point of view, besides the typical findings, some of the patients had splayed superior cerebellar peduncles (SCP) and mild, patchy T2/FLAIR-hyperintense signal in the periventricular white matter, without obvious clinical relevance. Identified variants included nonsense, frameshift, splice-site variants and multiexon deletions, all predicted to result in a complete loss of function of the protein.⁸

Here we report the results of *LAMA1* variant analysis in a large cohort of 15 probands with PBS. In addition, to assess the specificity of *LAMA1*-associated clinical and neuroimaging phenotype, we searched for *LAMA1* variants in 27 probands with distinct isolated cerebellar dysplasias or other forms of non-progressive cerebellar ataxia.

Patients and Methods

This study was approved by the ethics committee of the IRCCS Casa Sollievo della Sofferenza. Written informed consent was obtained from all families.

Patient cohorts

The 15 probands with PBS were collected by the senior authors (EBo and EMV): 1) from their personal cohorts of patients; 2) from patients who were referred for second opinion; 3) from requests to evaluate clinical and neuroimaging data of patients with CDC; and 4) from patients referred for molecular genetic testing after the diagnosis of PBS. Five probands were included in the original publication.⁷ The inclusion criteria were: 1) a clinical phenotype compatible with PBS including NPCA, ocular motor apraxia, intellectual disability, myopia, and/or retinal dystrophy, and 2) cerebellar dysplasia with or without

cysts.⁷ Exclusion criteria were: 1) genetically confirmed or suspected α -dystroglycanopathies (muscular involvement with elevated CK and/or suggestive malformations of cortical development such as cobblestone brain); 2) genetically confirmed or suspected *GPR56*-related polymicrogyria; 3) genetically confirmed or suspected tubulinopathies (dysmorphic basal ganglia); and 4) unilateral cerebellar dysplasia suggestive of an acquired, disruptive etiology.

In addition, as part of a next-generation-sequencing-based panel for cerebellar malformations or non-progressive cerebellar ataxia, *LAMA1* was also sequenced in a second cohort of 27 probands with either cerebellar dysplasias not matching the diagnostic criteria for PBS (n=5) or non-progressive cerebellar ataxia with cerebellar hypoplasia and enlarged interfoliar spaces (n=22). Probands with JS were not included in this screening as Aldinger and collaborators had previously excluded *LAMA1* variants in a large cohort of JS subjects.⁸

Clinical and qualitative neuroimaging analysis

Demographic data and detailed information about neurological and ophthalmological features as well as neurodevelopmental outcome were collected by 1) review of the clinical histories and 2) clinical-neurological follow-up examinations. Whenever possible, cognitive and language functions have been assessed with standardized neuropsychological tests as appropriate for the age of the patients, to provide an intelligence quotient (IQ) or developmental quotient (DQ). Otherwise, the developmental stage was estimated from the patient's history, clinical observations, and kindergarten or school reports.

All available neuroimaging data sets were retrospectively analyzed by two pediatric neurologists with experience in neuroimaging of the pediatric cerebellum (AP and EBo). Detailed information about neuroimaging analysis is described in Supplementary Methods.

LAMA1 sequencing analysis

In all probands, *LAMA1* was sequenced as part of a panel of 44 genes causative of various cerebellar malformations or non-progressive cerebellar ataxia (with the exclusion of JS genes), with TruSeq Custom Amplicon (TSCA) technology on a MiSeq platform (Illumina, San Diego, CA, USA), following the manufacturer's protocol. Expected coverage was 99% of the targeted genomic regions of interest. Sequences were mapped against the hg19 reference genome by Bowtie2, which achieved an average alignment performance of 98% across all samples. Variants were called by the HaplotypeCaller tool of GATK ver. 4.3, and were annotated with ANNOVAR. Annotated data were filtered out to exclude intronic variants, synonymous variants not predicted to affect splice sites, as well as variants with reported frequency > 0.01 in publicly available human variation resources (dbSNP ver. 144, 1000 Genomes, Exome Aggregation Consortium [ExAC], NHLBI Exome Sequencing Project Exome Variant Server [EVS]). Missense variants surviving the previous filters were investigated using dedicated software to assess their pathogenicity (PolyPhen-2, SIFT, MutationAssessor, MutationTaster, CADD) and conservation (phyloP, GERP++, SiPhy, ClustalW2). Variants potentially affecting function were verified by Sanger sequencing in the whole nuclear family, to assess segregation with the disease. Accession numbers are as follows: human *LAMA1* genomic sequence: NG_034251.1; human *LAMA1* mRNA

sequence: NM_005559.3; human LAMA1 protein sequence: NP_005550.2. Exons were numbered as in Aldinger et al.⁸ In two probands in whom only a single heterozygous *LAMA1* variant could be identified, sequencing data were further inspected to search for potential heterozygous deletions involving one or more exons. To this aim, a custom script tool was used to check and identify any significant difference in coverage for the *LAMA1* amplicons between the two probands and other 82 subjects analyzed with the same panel (including healthy controls and probands with distinct cerebellar malformations). All identified variants have been submitted to the LOVD gene variant database.

Quantitative real-time PCR

Dosage analysis of *LAMA1* exons 31-32 and 62-63 was performed in two probands (patients 10 and 14, respectively), their parents and one healthy control by quantitative real time PCR, using SYBR green I dye chemistry and a 7900HT sequence detection platform (Life Technologies, Thermo Fisher Scientific, Waltham, MA, USA). Primers' sequences are available upon request. The Telomerase housekeeping gene was amplified as internal control, and all reactions were run in triplicate. The relative expression between housekeeping gene and each target exon was calculated using the $\Delta\Delta C_T$ method.

Haplotype analysis

LAMA1 variant c.[2935delA] was identified in six unrelated families. To search for a common haplotype, five microsatellite markers spanning about 3Mb around the *LAMA1* locus were genotyped in available family members. Fluorescenced PCR products were run on an ABI3130XL Genetic Analyzer and raw data were analyzed using the GeneMapper® Software Version 4.0 (Applied Biosystems, Thermo Fisher Scientific, Waltham, MA, USA) to obtain the allele repeat in base pairs. Data analysis was performed with the GeneMarker software (SoftGenetics, State College, PA, USA). Haplotypes were constructed including these five markers as well as 16 single nucleotide polymorphisms (SNPs) obtained from *LAMA1* sequencing data, assigning phase based on the minimum number of recombinants.

Results

Identification of *LAMA1* variants

NGS analysis in 15 PBS probands identified biallelic *LAMA1* variants in 12, and single heterozygous variants in two. In the latter subjects, comparative analysis of *LAMA1* amplicons revealed a significantly reduced coverage of amplicons related to exons 31-32 (patient 10) and exons 62-63 (patient 14). This suggested the presence of heterozygous multi-exon deletions, which were confirmed in both cases by quantitative real time analysis on genomic DNA (Supplementary Figure 1). Thus, homozygous or compound heterozygous variants were detected in 14 out of 15 probands with PBS (93%) (see Supplementary Table 1 for details of identified variants).

Overall, we identified 16 distinct variants, all of which were novel. These include five small indels predicting premature truncation of the protein, five nonsense variants, two missense variants, two variants affecting canonical splice sites, and two multi-exon deletions (Figure 1). The two missense changes were found in compound heterozygosity in patient 15: they

affected fully conserved residues and were both predicted as deleterious by four distinct *in silico* predictors (Supplementary Figure 2). Twelve variants were absent from public databases, while four were present either in ExAC or EVS with very low frequency (<0.01), but never in the homozygous state. Segregation with the disease was confirmed in all families. Interestingly, the *LAMA1* c.[2935delA] variant was found to recur in six unrelated PBS families (homozygous in five and compound heterozygosity with another frameshift variant in one). This variant was found in the ExAC database with a very low frequency of $8.2e^{-06}$, while it is not reported in EVS. To evaluate whether this could represent a founder variant, we reconstructed haplotypes spanning the *LAMA1* locus, including microsatellite markers and informative intragenic SNPs. Haplotype analysis identified a small region of about 55 Kb shared by all families, between flanking SNPs rs74938552:G>A and rs677136:T>G, suggesting an ancestral origin (Supplementary Table 2).

No *LAMA1* variants could be detected in 27 probands with distinct cerebellar dysplasia or non-progressive cerebellar ataxia phenotypes, confirming the strong correlate between *LAMA1* variants and PBS.

Patients' characteristics and clinical findings

Overall, *LAMA1* variants were identified in 17 patients from 14 unrelated families. Clinical findings of these mutated patients are summarized in Table 1. Pregnancy, delivery, and perinatal history were uneventful. All children presented within the first six months of life mostly with developmental delay, or with abnormal ocular movements (strabismus, ocular motor apraxia, nystagmus) and poor fixation. At the last follow-up at the mean age of 8 years (range 1.5 to 16 years), all children older than two years ($n=16$) had cerebellar ataxia. Eye movement disorders included ocular motor apraxia in 13 children (76%), strabismus in seven (41%) and nystagmus in five (29%). All patients but 2 (88%) had mild or moderate intellectual disability or cognitive delay and delayed speech/language development. Cognitive functions were assessed by standardized cognitive tests in four patients (patient 1-8-15-17), resulting in widely variable full IQ scores (70, 69, 118 and 32, respectively). Other significant neurological findings were present only in patient 10 who had ballistic movements. Eye involvement was present in 10 patients (59%), including myopia in nine (53%), hypermetropia in two (12%) and retinal dystrophy in four (24%) as judged by fundoscopy. No further characterization of retinal involvement by electroretinography or optical coherence tomography was available. None of the mutated patients had systemic involvement outside the brain or eyes.

In patient 18, point and small indel variants were excluded, and there were no hints of reduced coverage in *LAMA1* by NGS analysis. At the age of 14 years, this patient had non-progressive cerebellar ataxia, ocular motor apraxia and strabismus, mild cognitive and language impairment, and hypermetropia. In addition, she developed kyphosis in the first year of life that remained stable for about ten years and then complicated with a severe progressive scoliosis. Detailed clinical information of mutated and non-mutated PBS patients are shown in Supplementary Table 1.

Qualitative neuroimaging findings

Qualitative neuroimaging analysis of the 17 *LAMA1*-mutated patients at the mean age at MRI of 3.1 years (range 15 days to 14 years) are summarized in Table 2, and representative images are shown in Figure 2A-F. Cortical-subcortical cerebellar cysts were present in all children and involved both cerebellar hemispheres and the cerebellar vermis in 16 patients (the youngest patient with cerebellar cysts was 3 months old at brain MRI). In the majority of patients, cysts were located within the anterior and superior part of the vermis and the posterior and superior part of the cerebellar hemispheres. Cerebellar dysplasia involved the whole cerebellum in 16 children. In patient 7, however, dysplasia was limited to the inferior parts of the cerebellum, and small cysts were present only in the right cerebellar hemisphere and vermis.

Hypoplasia of the cerebellar vermis was found in 10 patients (59%) and affected mostly the inferior part of the vermis. The fourth ventricle was enlarged in 14 children (82%) and had an elongated, square-like form in 13 (77%). On coronal images, the SCP course was splayed in nine children (53%). Morphological abnormalities of the brainstem were seen in six patients (35%) and included an elongated midbrain in six and a short pons in three children. Supratentorial anomalies were seen only in two children (12%) who had mild ventriculomegaly, while white matter signal abnormalities or disorders of cortical development were not present in any patient.

Patient 18 showed global cerebellar dysplasia, enlarged, elongated and squared-like formed fourth ventricle, and mild brainstem anomalies; however, she did not have obvious cerebellar cysts, but a slit filled by cerebrospinal fluid within the bilateral cerebellar hemispheres laterally to the middle cerebellar peduncles. The SCP were normally formed (Figure 2G-H).

Discussion

In 2014, we described a novel syndrome characterized by CDC and a homogeneous clinical presentation. Subsequently, Aldinger and collaborators identified variants in the *LAMA1* gene in 6 probands with this syndrome, which they termed PBS.

Here we reported a detailed clinical, neuroimaging and genetic characterization of the largest cohort of PBS patients to date (n=18), detecting *LAMA1* biallelic variants in all but one. All 16 identified variants were novel and were scattered throughout the coding region of the gene, without hotspots. In line with the previous report,⁸ nearly all identified variants were either frameshift, nonsense, splice-site variants or multiexon deletions, predicted to result in complete loss of function of the protein. Only two missense variants were found in compound heterozygosity in the same subject (patient 15). This was one of two patients in our cohort who had normal cognitive functions at age 9 years (full IQ 118 and 99), despite showing typical neuroimaging findings of PBS. However, the other patient with normal cognitive function (patient 8) carried two variants both predicted to result in truncated protein products, arguing against genotype-phenotype correlations in *LAMA1*-associated disease and suggesting the existence of other, still unknown phenotypic modifiers. In line with this, Aldinger and collaborators also reported two siblings with normal intelligence (UW160-3 and -4), who were compound heterozygous for a truncating variant and two

splice site changes both inherited from the same parent, which effect at the protein level has not been elucidated.⁸

Six out of 15 families shared the same c.[2935delA] variant (see Supplementary Table 1). All these families originated from countries related to the Mediterranean area (Albania, Kosovo, Bosnia, Spain, and Turkey) and shared a very small haplotype across the *LAMA1* locus, suggesting an ancestral founder effect.

The identification of *LAMA1* variants in all but one families confirms the identity of PBS as a well-defined Mendelian disease, and has helped to delineate its clinical and imaging spectrum. The clinical presentation is characterized by non-progressive cerebellar ataxia, intellectual disability, and in some children eye movement disorders. This phenotype is rather consistent but non-specific, and hence does not provide useful clues for the diagnosis, especially at onset. In fact, all patients presented within the first 6 months of life with unspecific neurological signs such as hypotonia and delayed motor and language developmental milestones, or with early visual problems. Later on, most patients developed mild to moderate intellectual disability. School performance of these children is also hampered by additional issues such as eye movement disorders (e.g. ocular motor apraxia), coordination problems (e.g. dysmetria), and visual impairments (e.g. high myopia and/or retinal dystrophy). However, several children were able to attend regular classes with individual educational support. As previously discussed, in rare patients cognitive functions may be normal; yet, the degree of intellectual impairment does not seem to correlate with the severity of cerebellar and brainstem malformation.

Ocular involvement in the form of high myopia or retinal abnormalities also occurs frequently in *LAMA1*-mutated patients. This is in line with findings in *Lama1* mouse and zebrafish models that showed defects in the retinal inner limiting membrane, attenuated electroretinography, abnormal lens and retinal vasculature, and progressive cell loss from the inner nuclear and ganglion cell layers. These findings suggest a role for *LAMA1* in the basement membranes not only of the mesenchyme adjacent to the developing cerebellum, but also of the retina.⁹⁻¹² Extra-retinal eye involvement is also present in other “laminopathies”: optic atrophy has been reported in children with *LAMB1* variants and microcoria, hypoplasia of the iris and ciliary body, while lenticonus posterior has been found in *LAMB2* mutated patients.^{13,14}

While the clinical presentation of PBS can be rather unspecific, brain MRI clearly points to the correct diagnosis by showing the peculiar association of cerebellar dysplasia, cerebellar cysts and abnormally shaped / sized fourth ventricle. Cerebellar dysplasia affects typically the entire cerebellum, although it may be limited only to the superior or inferior parts in rare cases (patient 7 in our series and patients UW163-3 and UW163-4 in ⁸). The presence of cerebellar dysplasia in *LAMA1* mutated patients is in line with the cerebral phenotype of *Lama1* conditional-knockout mice.^{15,16} In these animal models study of the postnatal cerebellum revealed misplacing of granule cells that may explain the overall perturbation of the layering of the cerebellum, and an aberrant folia formation that resembled human cerebellar dysplasia.¹⁵

Multiple cortical and sub-cortical cysts are usually found within the superior and anterior vermis and the superior and posterior parts of both cerebellar hemispheres, however they may vary in terms of number, size and location. Based on the role of laminin $\alpha 1$ in the basement membrane, a similar pathogenesis can be postulated for the cerebellar cysts observed in PBS and in α -dystroglycanopathies: cysts are most likely formed from the subarachnoid spaces that were engulfed by the dysplastic cerebellar folia, particularly in the boundary between the normal and dysplastic cerebellar cortex.¹⁷ No cysts were found in the same two siblings from family UW163, however both patients were young at MRI (5 and 25 months old, respectively), and it is still unknown whether cerebellar cysts in PBS are already present in the neonatal period or develop later, as observed in α -dystroglycanopathies.^{18,19} Longitudinal MRI studies of *LAMA1* mutated patients starting during the neonatal period are needed to definitely answer this question. All other imaging findings are present and identifiable at birth. To date, the lack of cerebellar cysts within the first weeks of life does not exclude the diagnosis of PBS in infants with global cerebellar dysplasia, and a brain MRI follow-up after several months should be considered.

In the majority of *LAMA1*-mutated patients, the fourth ventricle is enlarged and has a peculiar, elongated, and square-like form. To the best of our knowledge, this form of the fourth ventricle is unique for PSB and, if present, increases the specificity of the neuroimaging findings. Moreover, an abnormal, splayed, and elevated course of the SCP can be observed in about half of patients. The molar tooth sign (MTS), which represents the unique neuroimaging diagnostic criterion of JS, is also characterized by an abnormal course of the SCP.^{20,21} However, the appearance of the MTS (elevated, horizontal, and thickened SCP) is clearly different, and distinction between PBS and JS is not problematic. Indeed, we are not aware of a single patient with the MTS and cerebellar cysts, and no variants in *LAMA1* could be identified in a large cohort of patients with JS.⁸

Hypoplasia of the inferior cerebellar vermis and mild abnormalities of the brainstem have been found in the majority of children with PBS. Aldinger and collaborators also reported occasional supratentorial abnormalities, including patchy T2-hyperintense signal of the periventricular white matter in three patients and mild ventriculomegaly in one patient.⁸ We did not find white matter signal abnormalities in our patients, but mild ventriculomegaly in two. All these represent inconsistent and non-specific findings that are not helpful for diagnostic purposes. Generally, the presence of significant morphological abnormalities or signal changes within the supratentorial brain should question the diagnosis of PBS.

While the phenotype of *LAMA1*-mutated patients is fairly homogeneous, we observed some unexpected intrafamilial variability: in a large family with four affected siblings (patients 4 to 7, Supplementary Table 1), one child had different, unusual neuroimaging findings compared to his sibs, including only few small cysts, normal size and shape of the fourth ventricle, and normal morphology of the brainstem. This observation suggests the existence of still unknown modifiers able to modulate the phenotypic expression even in patients carrying the same gene variants, as shown in other cerebellar malformations such as JS.^{21,22}

In one patient, we diagnosed PBS based on an early low-quality MRI at age 5 months, but failed to identify variants affecting function or exon imbalances in *LAMA1*. Interestingly,

this patient seems to be an outlier both from a clinical and neuroimaging point of view. In fact, she presented a severe kyphoscoliosis since infancy that has not been found in any of the other PSB patients; moreover, a recent, higher quality MRI at age 14 years did not show typical cerebellar cysts, but bilateral CSF isointense slits within the cerebellar hemispheres laterally to the middle cerebellar peduncles, which could represent the fusion of multiple small cysts (Figure 2G-H). Although we cannot rule out the possibility that this patient carries *LAMAI* variants not detectable with the adopted methods (e.g. deep intronic variants or promoter variants), the atypical clinical and neuroimaging features argue against this option, and support the observation that the *LAMAI*-associated phenotype is highly homogeneous and well recognizable. Indeed, other conditions characterized by the presence of cerebellar dysplasia and/or cerebellar cysts (such as α -dystroglycanopathies, *GPR56*-related polymicrogyria, tubulinopathies, Chudley-McCullough syndrome, Aicardi syndrome or some forms of ponto-cerebellar hypoplasia) can be easily ruled out by the presence of additional, peculiar neuroimaging findings (e.g. specific malformations of cortical development, dysmorphic basal ganglia, corpus callosum anomalies, severe pons hypoplasia) and/or clinical features (e.g. muscular dystrophy, spasticity, severe epilepsy etc), making the differential diagnosis of PBS relatively easy.^{5,7}

In patients with suspicion of PBS, *LAMAI* genetic analysis is warranted to confirm the diagnosis and provide genetic counselling. Since PBS appears to be a genetically homogeneous condition and the *LAMAI* gene is very large and lacks hotspots, testing for the founder variant c.[2935delA] might be considered as a first, rapid and inexpensive diagnostic step, as this variant is likely responsible for at least 40% of PBS cases originated from the Mediterranean area. In the remaining patients, NGS-based sequencing of *LAMAI* would be preferable over Sanger sequencing, as it will also allow identifying heterozygous exon deletions.

Supplementary Material

Refer to Web version on PubMed Central for supplementary material.

Acknowledgements

This work was supported by the European Research Council (ERC Starting Grant 260888) and the Italian Ministry of Health (Ricerca Corrente 2015).

References

1. Doherty D, Millen KJ, Barkovich AJ. Midbrain and hindbrain malformations: advances in clinical diagnosis, imaging, and genetics. *Lancet Neurol.* 2013; 12:381–393. [PubMed: 23518331]
2. Bosemani T, Orman G, Boltshauser E, Tekes A, Huisman TA, Poretti A. Congenital abnormalities of the posterior fossa. *Radiographics.* 2015; 35:200–220. [PubMed: 25590398]
3. Jissendi-Tchofo P, Severino M, Nguema-Edzang B, Toure C, Soto Ares G, Barkovich AJ. Update on neuroimaging phenotypes of mid-hindbrain malformations. *Neuroradiology.* 2015; 57:113–138. [PubMed: 25339235]
4. Poretti A, Boltshauser E, Doherty D. Cerebellar hypoplasia: differential diagnosis and diagnostic approach. *Am J Med Genet C Semin Med Genet.* 2014; 166C:211–226. [PubMed: 24839100]
5. Boltshauser E, Scheer I, Huisman TA, Poretti A. Cerebellar cysts in children: a pattern recognition approach. *Cerebellum.* 2015; 14:308–316. [PubMed: 25504001]

6. Poretti A, Boltshauser E. Terminology in morphological anomalies of the cerebellum does matter. *Cerebellum & Ataxias*. 2015; 2:8. [PubMed: 26331051]
7. Poretti A, Hausler M, von Moers A, et al. Ataxia, intellectual disability, and ocular apraxia with cerebellar cysts: a new disease? *Cerebellum*. 2014; 13:79–88. [PubMed: 24013853]
8. Aldinger KA, Mosca SJ, Tetreault M, et al. Mutations in LAMA1 cause cerebellar dysplasia and cysts with and without retinal dystrophy. *Am J Hum Genet*. 2014; 95:227–234. [PubMed: 25105227]
9. Edwards MM, Mammadova-Bach E, Alpy F, et al. Mutations in Lama1 disrupt retinal vascular development and inner limiting membrane formation. *J Biol Chem*. 2010; 285:7697–7711. [PubMed: 20048158]
10. Edwards MM, McLeod DS, Grebe R, Heng C, Lefebvre O, Luty GA. Lama1 mutations lead to vitreoretinal blood vessel formation, persistence of fetal vasculature, and epiretinal membrane formation in mice. *BMC Dev Biol*. 2011; 11:60. [PubMed: 21999428]
11. Biehlmaier O, Makhankov Y, Neuhaus SC. Impaired retinal differentiation and maintenance in zebrafish laminin mutants. *Invest Ophthalmol Vis Sci*. 2007; 48:2887–2894. [PubMed: 17525225]
12. Semina EV, Bosenko DV, Zinkevich NC, et al. Mutations in laminin alpha 1 result in complex, lens-independent ocular phenotypes in zebrafish. *Dev Biol*. 2006; 299:63–77. [PubMed: 16973147]
13. Radmanesh F, Caglayan AO, Silhavy JL, et al. Mutations in LAMB1 cause cobblestone brain malformation without muscular or ocular abnormalities. *Am J Hum Genet*. 2013; 92:468–474. [PubMed: 23472759]
14. Wuhl E, Kogan J, Zurowska A, et al. Neurodevelopmental deficits in Pierson (microcoria-congenital nephrosis) syndrome. *Am J Med Genet A*. 2007; 143:311–319. [PubMed: 17256789]
15. Heng C, Lefebvre O, Klein A, et al. Functional role of laminin alpha 1 chain during cerebellum development. *Cell Adh Migr*. 2011; 5:480–489. [PubMed: 22274713]
16. Ichikawa-Tomikawa N, Ogawa J, Douet V, et al. Laminin alpha1 is essential for mouse cerebellar development. *Matrix Biol*. 2012; 31:17–28. [PubMed: 21983115]
17. Aida N, Yagishita A, Takada K, Katsumata Y. Cerebellar MR in Fukuyama congenital muscular dystrophy: polymicrogyria with cystic lesions. *AJNR Am J Neuroradiol*. 1994; 15:1755–1759. [PubMed: 7847224]
18. Barkovich AJ. Neuroimaging manifestations and classification of congenital muscular dystrophies. *AJNR Am J Neuroradiol*. 1998; 19:1389–1396. [PubMed: 9763366]
19. Longman C, Mercuri E, Cowan F, et al. Antenatal and postnatal brain magnetic resonance imaging in muscle-eye-brain disease. *Arch Neurol*. 2004; 61:1301–1306. [PubMed: 15313851]
20. Maria BL, Hoang KB, Tusa RJ, et al. “Joubert syndrome” revisited: key ocular motor signs with magnetic resonance imaging correlation. *J Child Neurol*. 1997; 12:423–430. [PubMed: 9373798]
21. Poretti A, Huisman TA, Scheer I, Boltshauser E. Joubert syndrome and related disorders: spectrum of neuroimaging findings in 75 patients. *AJNR Am J Neuroradiol*. 2011; 32:1459–1463. [PubMed: 21680654]
22. Romani M, Micalizzi A, Valente EM. Joubert syndrome: congenital cerebellar ataxia with the molar tooth. *Lancet Neurol*. 2013; 12:894–905. [PubMed: 23870701]

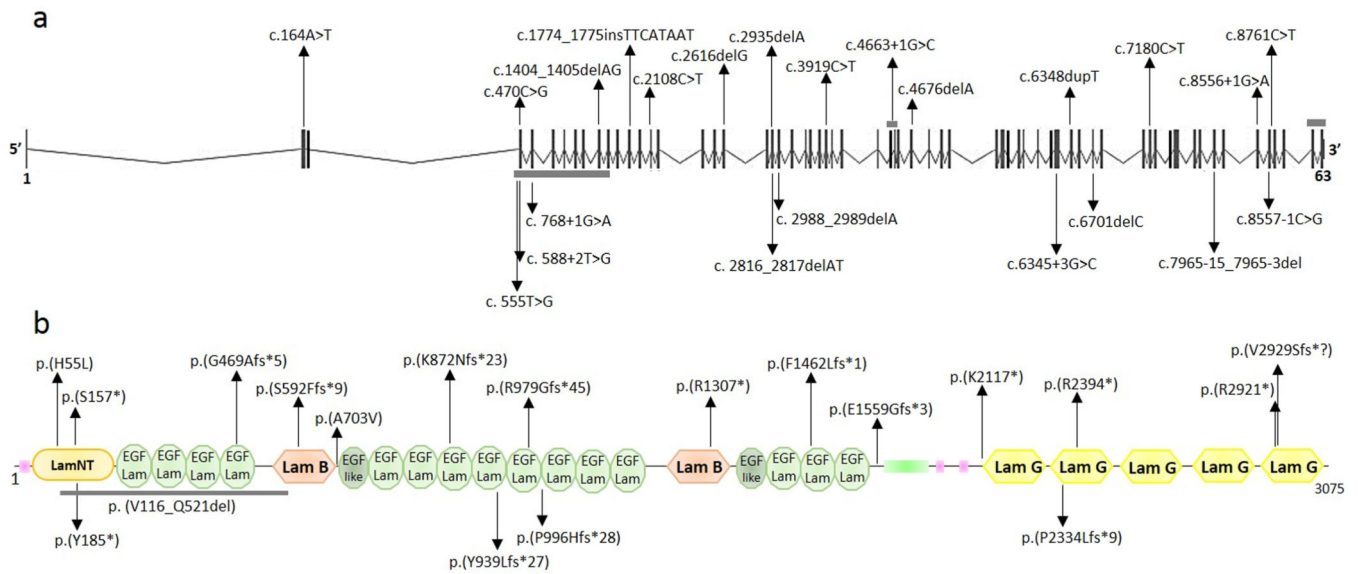


Fig. 1. Schematics of *LAMA1* gene and LAMA 1 protein with identified variants

Schematic structure of a) *LAMA1* gene and b) LAMA1 protein. In the gene, vertical black bars denote the 63 exons. In the protein, SMART predicted domains are represented.

Variants above and below the panels are those identified in this paper and by Aldinger et al, respectively. Splice-site variants are not reported at the protein level. Horizontal gray bars denote multiexon deletions (in a) or amino acid deletions (in b).

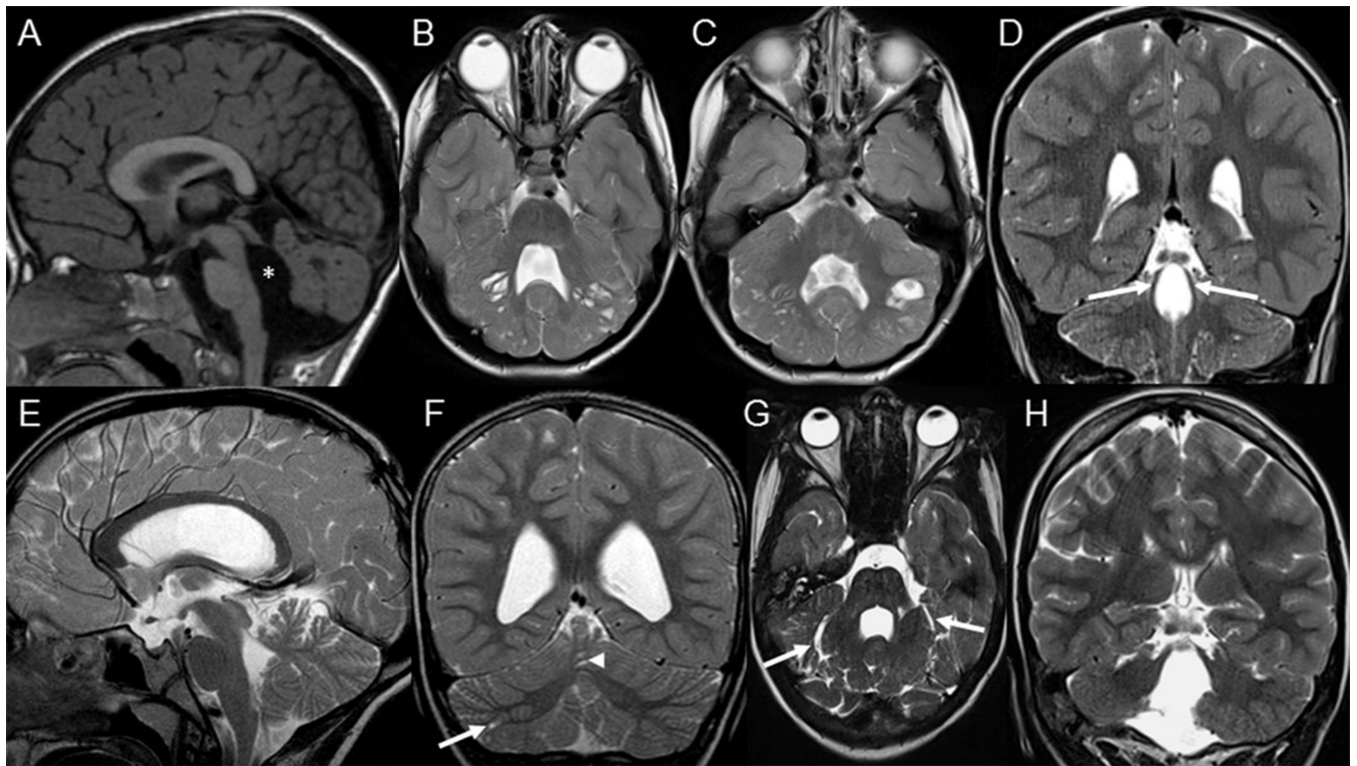


Fig. 2. Typical and atypical neuroimaging findings of PBS

A-D, typical neuroimaging findings of PBS as seen in 16 patients. A, Midsagittal T1-, B and C, Axial T2-, and D, Coronal T2-weighted magnetic resonance images of patient 10 at the age of 1 year and 5 months show an enlarged, elongated and square-like formed fourth ventricle (asterisk), dysplasia and multiple cortical-subcortical cysts within the cerebellar vermis and both cerebellar hemispheres, and splayed superior cerebellar peduncles (arrows). E-H, Atypical neuroimaging findings of PBS as seen in 2 patients. E, Midsagittal and F, Coronal T2-weighted magnetic resonance images of patient 7 at the age of 8 years and 4 months show mild cerebellar dysplasia involving the inferior parts of the cerebellum, small cysts within the right cerebellar hemisphere (arrow) and vermis (arrowhead), and a normal, triangular shape of the fourth ventricle. G, Axial and H, Coronal T2-weighted images of patient 18 at the age of 14 years show a global cerebellar dysplasia without cysts, but a slit that is isointense to cerebrospinal fluid and is located within the bilateral cerebellar hemispheres laterally to the middle cerebellar peduncles (arrows). In addition, the superior cerebellar peduncles are only mildly splayed.

Table 1
Clinical characteristics of 17 PBS patients with *LAMA1* variants affecting function

	Number of patients (%)
Gender (female)	8/17 (47%)
Parental consanguinity	1/17 (6%)
Age at first symptoms below 6 months	17/17 (100%)
Developmental delay as first symptom	13/17 (77%)
Age at follow-up (mean, range)	7.2 (1.5-14.0)
Ataxia	16/16 (100%) [*]
Ocular motor apraxia	13/17 (76%)
Strabismus	7/17 (41%)
Cognitive impairment	15/17 (88%)
Speech/ language delay	16/17 (94%)
Other neurological findings ^{**}	1/17 (6%)
Myopia	9/17 (53%)
Retinal dystrophy	4/17 (24%)
Other clinical findings	0/17

^{*} one child was too young for the evaluation of ataxia;

^{**} ballistic movements in one patient.

Table 2
Neuroimaging findings of 17 PBS patients with *LAMAI* variants affecting function

	Number of patients (%)
Age at MRI (mean, range)	3.1 years (3 months - 14 years)
Presence of cerebellar cysts	17/17 (100%)
	Involvement of both cerebellar hemispheres
	16/17 (94%)
Location of cysts	Predominant involvement of the anterior vermis
	9/17 (53%)
	Predominant involvement of the posterior hemispheres
	11/17 (65%)
	Predominant involvement of the superior vermis and hemispheres
	16/17 (94%)
Cerebellar dysplasia	17/17 (100%)
Hypoplasia of the inferior vermis	10/17 (59%)
Splayed superior cerebellar peduncles	9/17 (53%)
Enlargement of the fourth ventricle	14/17 (82%)
Square shape of the fourth ventricle	13/17 (77%)
Brainstem structural abnormalities	6/17 (35%)
Supratentorial structural abnormalities	2/17 (12%)