

Published in final edited form as:

J Hepatol. 2016 May ; 64(5): 1118–1127. doi:10.1016/j.jhep.2015.12.017.

BACTERIA EXPOSED BILIARY EPITHELIUM AND LIVER B CELLS ACTIVATE INTRAHEPATIC MAIT CELLS IN AN MR1-DEPENDENT MANNER

Hannah C Jeffery^{#1}, Bonnie van Wilgenburg^{#2}, Ayako Kurioka², Krishan Parekh¹, Kathryn Stirling¹, Sheree Roberts¹, Emma E Dutton³, Stuart Hunter¹, Daniel Geh¹, Manjit K Braitch¹, Jeremy Rajanayagam¹, Tariq Iqbal⁴, Thomas Pinkney⁴, Rachel Brown⁴, David R Withers³, David H Adams^{1,4}, Paul Klenerman^{#2}, and Ye Htun Oo^{#1,4}

¹Centre for Liver Research and NIHR BRU in Liver Disease, Institute of Immunology & Immunotherapy, University of Birmingham

²Peter Medawar Building for Pathogen Research, University of Oxford

³Institute of Immunology and Immunotherapy, University of Birmingham

⁴University Hospital of Birmingham NHS Foundation Trust

These authors contributed equally to this work.

Abstract

Background—Mucosal-Associated Invariant T (MAIT) cells are innate-like T cells characterised by the invariant TCR-chain, V α 7.2-J α 33, and are restricted by MR1, which presents bacterial vitamin B metabolites. They are important for antibacterial immunity at mucosal sites; however, detailed characteristics of liver-infiltrating MAIT (LI-MAIT) and their role in biliary immune surveillance remain unexplored.

Methods—The phenotype and intrahepatic localisation of human LI-MAIT cells was examined in diseased and normal livers. MAIT cell activation in response to *E. coli*-exposed macrophages, biliary epithelial cells (BEC) and liver B cells was assessed with/without anti-MR1.

Results—Intrahepatic MAIT cells predominantly localised to bile ducts in the portal tracts. Consistent with this distribution, they expressed biliary tropic chemokine receptors CCR6, CXCR6, and integrin α E β 7. LI-MAIT cells were also present in the hepatic sinusoids and possessed tissue-homing chemokine receptor CXCR3 and integrins LFA-1 and VLA-4, suggesting their recruitment via hepatic sinusoids. LI-MAIT cells were enriched in the parenchyma of acute liver failure livers compared to chronic diseased livers. LI-MAIT cells had an activated, effector memory phenotype, expressed α 4 β 7 and receptors for IL-12, IL-18 and IL-23. Importantly, in response to *E. coli*-exposed macrophages, liver B cells and BEC, MAIT cells up-regulated IFN- γ and CD40 Ligand and degranulated in an MR1-dependent, cytokine-independent manner. In

Correspondence to: Dr Ye Htun Oo, MBBS, MRCP, PhD MRC Clinician Scientist & Consultant Hepatologist Centre for Liver Research and NIHR Birmingham Biomedical Research Unit University of Birmingham, Vincent Drive, Edgbaston, Birmingham, B15 2TT, UK. Tel: +44 121 415 8700 Fax: +44 121 415 8701 y.h.oo@bham.ac.uk.

Competing Interests, None

addition, diseased liver MAIT cells expressed T-bet and ROR γ t and the cytokines IFN- γ , TNF- α , and IL-17.

Conclusions—Our findings provide the first evidence of an immune surveillance effector response for MAIT cells towards biliary epithelial cells in human liver; thus they could be manipulated for treatment of biliary disease in the future.

Keywords

Human liver; Mucosal-Associated Invariant T cells; Biliary epithelium; *E. coli*; Immune response; Biliary firewall

INTRODUCTION

Mucosal-associated invariant T (MAIT) cells are a recently identified subset of T cells with an evolutionarily conserved invariant T cell antigen receptor (TCR) α -chain, composed of the invariant α -chain V α 7.2-J α 33/J α 20/J α 12 in humans and V α 19-J α 33 in mice[1, 2]. They are restricted to the CD161⁺⁺ population and are abundant in human blood, the intestinal mucosa and mesenteric lymph nodes[3-5]. MAIT cells respond to antigen presented on the highly phylogenetically conserved major histocompatibility complex (MHC) class I-related molecule, MR1, which possesses a unique antigen-binding cleft for vitamin B metabolites from pathogenic and/or commensal bacteria, and distinguishes MAIT cells from peptide- or lipid-recognizing $\alpha\beta$ T cells[1, 6, 7]. MAIT cells can be activated by a wide variety of bacterial strains *in vitro*, and importantly they are crucial in mucosal immune defence in bacterial infection[8-10]. They respond in an MR1-dependent manner to antigen presenting cells (APC) cultured with bacteria and can also be activated via IL-12 and IL-18 in a TCR-independent manner[11, 12]. MAIT cell frequencies have been reported to be lower in bacterially-infected patients' blood[10, 13].

Both hepatic sinusoids and biliary epithelial cells (BEC) are crucial in first-line defence toward pathogens in both the steady and disease state as the human liver is continuously exposed to intestinally-derived antigens from portal venous blood and biliary reflux[14]. A recent study suggested that immune cells in the hepatic sinusoids function as a firewall to prevent the systemic spread of gut-derived pathogens that evade the mesenteric immune system[15]. The presence of MAIT cells has been reported in healthy human liver sinusoidal fluids[16], however, their role in mucosa defense at the bile ducts, which are continuous with the gut lumen and its microbes, and form the first line protection against biliary pathogens, is still unexplored[17, 18]. BEC are known to express antigen-presenting molecules and can activate lymphocytes[19]. A recent report indicated that MAIT cells could efficiently lyse epithelial cells of the HeLa cell line that are infected with bacteria[20]. Taken together, these findings indicate that MAIT cells are likely to be important contributors to the maintenance of steady-state immunity and the pathogenesis of inflammatory and biliary liver diseases, especially in response to bacterial exposure. Thus, in the current study, we used primary human liver tissues, obtained from both normal and diseased explanted human livers, to investigate the localisation and phenotype of intrahepatic/liver-infiltrating MAIT (LI-MAIT) cells, as well as their functional response to bacterially-exposed biliary epithelial surfaces in inflammatory biliary liver diseases.

MATERIALS AND METHODS

Isolation of liver infiltrating lymphocytes (LIL), peripheral blood lymphocytes (PBL) and biliary epithelial cells (BEC)

Venous blood, collected in EDTA, was obtained from healthy donors and patients with inflammatory and autoimmune liver diseases (primary sclerosing cholangitis (PSC) and primary biliary cirrhosis (PBC)) and alcoholic liver disease (ALD). Explanted diseased liver tissue was obtained from patients who underwent liver transplantation for end-stage liver diseases including PSC, PBC, ALD and non-alcoholic steatohepatitis (NASH) or for acute liver failure from seronegative (NonA NonB (NANB)) hepatitis. Non-diseased liver tissues were obtained from unused donor liver tissues. All samples were collected with appropriate patient consent and local research ethics committee approval (LREC ref. CA/5192, 06/Q2708/11). Human LIL, PBL and BEC cells were isolated from fresh liver tissue and peripheral blood as described previously[21].

Localisation of TCR V α 7.2-expressing cells

Human liver tissues were stained with purified anti-TCR V α 7.2 (50 μ g/ml, 3C10, BioLegend) or IgG1 isotype control to detect the localisation of V α 7.2⁺ cells. See supplementary data.

Phenotyping of intrahepatic and peripheral blood MAIT cells

Liver-infiltrating and blood MAIT cells were phenotyped directly ex vivo for the expression of surface markers, transcription factors and intracellular cytokines. See supplementary data.

MAIT cell response to *E. coli* exposed antigen-presenting cells

Antigen-presenting cells (APCs: blood monocyte-derived macrophages, THP1, liver B cells or BEC) were incubated overnight with paraformaldehyde-fixed *Escherichia coli* (*E. coli*) (DH5 α , Invitrogen) at 25, 20, 1000 or 1000 bacteria per cell respectively. CD8⁺ T cells isolated from blood using CD8 Microbeads (Miltenyi Biotec) or CD3⁺ T cells isolated from liver by flow sorting were cultured with the *E. coli*-exposed APCs, in the presence of anti-CD107a (Pe or PeCy5) and blocking antibodies against IL-12p40/70 (5 μ g/mL, C8.6, eBioscience), IL-18 (5 μ g/mL, 125-2H, MBL International, USA) and MR1 (10 μ g/mL)[22] as indicated. In some assays, anti-CD40 Ligand (CD40L)-PeCy7 was added. MAIT cell intracellular and surface markers were stained and data were acquired on a MACSQuant (Miltenyi Biotec) or CyAN (Dako) flow cytometer and analyzed using FlowJo (Tree Star Inc.). Autologous liver-infiltrating B cells and T cells were cell sorted by a Moflo Astrios cell sorter (Beckman Coulter). Cells were labeled with anti-CD3-PeCy7 and anti-CD19-APCVio770 to identify CD3 T cells and CD19 B cells respectively. Blood macrophages were generated by culturing CD14⁺ monocytes, isolated from blood using CD14 microbeads (Miltenyi Biotec), with 100ng/ml M-CSF (R and D Systems) for 7-9 days.

Statistical analysis

GraphPad Prism 5.0 software (GraphPad software, San Diego, CA, USA) was used for statistical analysis. Comparisons of two populations were by the Mann-Whitney test or *t*-

test. Comparisons of more than one population were by Friedman's test with Dunn's Multiple Comparison post-hoc test or by One-Way ANOVA with Bonferroni's Multiple Comparison post-hoc test as indicated in the figure legend. Statistical significance was defined as p -value <0.05 . Error bars on graphs are presented as median \pm interquartile range or mean \pm SEM. Values in text are given as median and overall range (in brackets).

RESULTS

Intrahepatic MAIT cells preferentially reside in peri-biliary areas of portal tracts

We examined the localisation of liver infiltrating MAIT (LI-MAIT) cells in normal and diseased human livers by immunohistochemistry staining for TCR V α 7.2. Most V α 7.2⁺ cells resided around bile ducts in portal tracts with few detected in the parenchyma (Figure 1A, B; Supplementary Figure 2). The distribution was similar in normal, autoimmune and non-autoimmune diseased livers (Figure 1C; Supplementary Figure 2) similar to other immune subsets (Supplementary Figure 1). Interestingly, in acute, seronegative liver failure, increased infiltration of V α 7.2⁺ cells to the parenchyma was noted (Figure 1A iii, vi, 1C; Supplementary Figure 3) when compared to normal livers or any of the chronic liver diseases studied (Figure 1A i, iv). The overall frequency of V α 7.2⁺ cells appeared increased in PSC compared to the other liver diseases (Figure 1C). By flow cytometry, we showed that the majority of V α 7.2⁺ lymphocytes in normal livers (63.6% (24.4-93.2%)) and over one-third in diseased (40.5% (11.6-75.2%)) were CD3⁺CD161⁺⁺ MAIT cells (Supplementary Figure 4). We confirmed the predominant localisation of CD3⁺CD161⁺ V α 7.2⁺ MAIT cells in peri-biliary regions of portal tracts by both immunohistochemistry (Figure 1Aii, v and 1C) and confocal microscopy (Figure 2).

Frequencies of MAIT cells are reduced in liver diseases, with an increase in cells expressing the CD4 coreceptor

Next, using flow cytometry we compared frequencies of CD3⁺CD161⁺⁺ V α 7.2⁺ MAIT cells in intrahepatic liver infiltrates and in blood from normal and diseased tissues. Increased frequency of MAIT cells in liver compared to blood was observed in both normal and diseased states (Figure 3A, B). The frequency of liver and blood MAIT cells in total CD3⁺ T cells was decreased in chronic liver diseases (Figure 3A, B). In liver as in blood, CD8⁺ cells represented the major MAIT cell subset (Figure 3C, D). However, in disease, the proportion of CD4⁺ MAIT cells was significantly increased in both the blood and liver, which in liver, was compensated for by a significant reduction in the CD8⁺ MAIT cell frequency (Figure 3C, D). MAIT cells were unique among the T cell subsets that we examined in showing a reduced frequency with disease (Figure 3E). We observed a negative correlation between total MAIT cells and total CD4⁺ T cells in normal livers but found no sign of this correlation in disease. Conversely there was a trend toward a positive correlation of MAIT cells with CD8⁺ T cells in normal livers. In non-autoimmune livers we noticed a positive correlation with CD161⁺ T cells. No relationships were found between MAIT cells and CD4⁻CD8⁻ double negative (DN) T cells in either normal or diseased livers (Figure 3F). In disease, the proportion of CD4⁺ cells within the MAIT cell population was approximately 2-fold greater than that occurring for total CD4⁺ cells within the total T cell population; however the frequency of CD4⁺ MAIT cells among total T cells did not alter with disease, rather the

CD8⁺ and DN MAIT cell frequencies among total T cells decreased significantly in disease, accounting for the rise in the proportion of CD4⁺ cells within the MAIT cell population (Figure 3E).

Tissue-homing chemokine receptor, integrin and cytokine receptor expressions of intrahepatic MAIT cells

Chemokine receptors, CXCR6 and CCR6 and integrin α E β 7 have been implicated in lymphocyte recruitment to biliary epithelium[21, 23, 24]. All three were expressed by LI-MAIT cells from both diseased and normal livers [CXCR6 (normal: 29% (14-33%); diseased: 22% (4-52%)), CCR6 (normal: 36% (12-72%); diseased: 53% (7-81%)), α E β 7 (normal: 4% (4-12%); diseased: 16% (2-37%))] (Figure 4A).

Sinusoidal recruitment to inflamed tissue involves the chemokine receptor CXCR3, which responds to interferon-dependent ligands, CXCL9/10/11 in inflamed tissues, and the integrins LFA-1 and VLA-4[25]. Almost all LI-MAIT cells expressed LFA-1 (normal: 96% (92-98%); diseased: 91% (81-93%)) and most expressed VLA-4 (normal: 57% (13-75%); diseased: 58% (19-71%)) (Figure 4B). LI-MAIT cells from diseased livers showed significant upregulation of CXCR3 compared to LI-MAIT cells from normal tissue (normal: 21% (17-31%); diseased: 81% (42-89%), $p < 0.01$) (Figure 4B). Increased expression of CX3CR1 and CCR5 was also noticed in disease (Figure 4C). Since MAIT cells are believed to expand in the gut in response to bacterial antigens, we screened for expression of the gut homing chemokine receptor CCR9 and integrin α 4 β 7[26] but detected little expression on LI-MAIT cells from either normal or diseased tissue (Figure 4C). Given the change in the balance of CD4/CD8/DN MAIT cells in diseased livers we assessed whether there were any subset-specific differences in homing receptor expression profile. We observed little difference in percentage and intensity of expression across subsets in their expression of CCR6, CCR5 and CX3CR1. Interestingly, however, higher frequencies of CD4⁺ MAIT expressed CXCR3 compared to CD8⁺ or DN MAIT in normal livers, although the intensity of expression did not differ across subsets. In disease, frequencies of CD4⁺ and CD8⁺ CXCR3-expressing cells did not differ but the intensity of expression on CD4⁺ cells was significantly greater than on CD8⁺ or DN cells (Supplementary Figure 5).

We also evaluated the expression of cytokine receptors whose cognate cytokines are known to be secreted by liver-resident cells and to mediate MAIT cell activation *in vitro*[12]. The pattern of cytokine-receptor expression was similar in diseased and non-diseased liver tissue. IL-18R was highly expressed (normal: 97% (93-99%); diseased: 83% (65-96%)). There was low-to-moderate expression of IL-12R (normal: 7.5%; diseased: 15.7%) and IL-23R (normal: 23%; diseased: 16%). IL-6R was not detected on LI-MAIT cells (Figure 4D).

Phenotypic characterisation of liver-infiltrating MAIT cells

There was no overlap of the LI-MAIT cell population with $\gamma\delta$ T cells (Supplementary Figure 6A). Although LI-MAIT cells had moderate expression of the Natural Killer (NK) cell marker CD56, they had low expression of other NK cell phenotypic markers such as NKG2D and NKp46 (Supplementary Figure 6B). LI-MAIT cells were mostly CD45RA⁻CCR7⁻ effector memory (Supplementary Figure 7A) and expressed the activation

marker CD69 but lacked CD40L (Supplementary Figure 7B). LI-MAIT cells showed ubiquitous surface expression of CD95 (93%) but lacked CD95L (Supplementary Figure 7C). They were also found to have constitutive expression of CD26 and to express the adenosine-pathway receptors CD39, and CD73 (Supplementary Figure 8A).

Diseased liver-infiltrating MAIT cells produce IFN- γ , TNF- α , IL-17 and granzyme B

To determine possible effector functions of LI-MAIT cells, we examined the cytokines and cytotoxic granzyme produced by MAIT cells *ex vivo*. LI-MAIT cells showed high frequencies of IFN- γ (55%) and TNF- α expression (89%) and low frequencies of IL-17 production (3.5%) but IL-22 and Th2-cytokines including IL-4, IL-5 and IL-13 were barely detected (Figure 5A, B). We noticed that approximately 50% of IL-17-producing cells had a dual Th1/Th17 phenotype, secreting IFN- γ . Consistent with their ability to produce both Th1 and Th17-type cytokines, LI-MAIT cells expressed the transcription factors T-bet and RORc, (Supplementary Figure 8B). Examining *ex vivo* stores of cytotoxicity factor, we found moderate frequencies of granzyme B-expressing LI-MAIT cells (10% (5-25%)) (Figure 5F).

Activation of blood and liver-infiltrating MAIT cells by antigen presenting cells in an MR1 dependent manner

MAIT cells can be activated in response to bacterial metabolites in an MR1- and/or IL-12/IL-18-dependent manner by professional and non-professional APC, such as Hela cells, B cells and THP1 cells[20, 27]. As a model to study activation by macrophages, we exposed blood MAIT cells to monocyte-derived macrophages that had been treated with or without *E. coli* and examined the expression of the degranulation marker CD107a, IFN- γ and CD40L. MAIT cells expressed CD107a and IFN- γ in an MR1-dependent manner. They also showed a tendency for CD40L expression (Figure 6A). These responses were MR1-dependent but independent of IL-12 or IL-18. Both THP1 cells (Figure 6B) and liver-infiltrating B cells (Figure 6C), pre-treated with *E. coli*, activated LI-MAIT cells from diseased livers by inducing the expression of CD107a, IFN- γ and TNF- α in an MR1-dependent manner.

Bacterially-exposed primary human biliary epithelial cells activate MAIT cells in an MR1-dependent, cytokine-independent manner

Since we observed LI-MAIT cells around bile ducts in the portal tracts we proceeded to examine whether MAIT cells may respond to bacterial infection associated with the biliary epithelium. We therefore co-cultured blood derived MAIT cells with primary human BEC with or without *E. coli* and observed selective activation by the MAIT population in the presence of BEC presenting *E. coli*. The V α 7.2⁺CD161⁻ cells within the same culture did not respond (Figure 7A). Increased expression of CD107a and IFN- γ was MR1-dependent, however, blocking the cytokines IL-12 and IL-18 did not have any effect (Figure 7B). CD40L upregulation was significantly inhibited by blocking either MR1 or the cytokines IL-12 and IL18 (Figure 7B). We performed the same assay with T cells isolated from diseased livers. LI-MAIT responded to BEC presenting *E. coli*, upregulating CD107a, IFN- γ and TNF- α in an MR1-dependent manner (Figure 7C).

DISCUSSION

Although MAIT cells have recently been reported in normal human liver perfusate, detailed characteristics of liver-infiltrating MAIT cells in normal and diseased state, and their role in biliary epithelial mucosa protection remained unexplored[3, 16, 28, 29]. The biliary epithelium is in continuity with the intestinal gut flora and thus provides another potential portal of pathogen entry from the gut to the liver. As such, resident immune cells including MAIT cells that localized around bile ducts in the portal tracts play an important role in protection against invading bacteria. MAIT cells respond to microbial antigens to provide protection at epithelial and mucosal surfaces. The liver regulates tolerance to food antigens and at the same time acts as a firewall to prevent intestinal microbes entering the systemic circulation[15]. We observed the overall MAIT cell frequency to be significantly higher in the normal liver compared to diseased liver, which differed from conventional CD4⁺, CD8⁺ or DN T cells. This suggests that MAIT cells are a major class of T cell recruited to the normal liver in order to act as a firewall and protect the biliary epithelium, therefore playing an important role in immune surveillance and homeostasis at the biliary mucosal barrier.

Immunohistochemical and confocal fluorescence staining of human liver tissue demonstrated that intrahepatic MAIT cells are present in the sinusoids. During an immune response to invading infection (e.g. bacterial infection) or during an inflammatory reaction, lymphocytes are recruited to liver tissue in response to combinations of locally expressed chemokines[14]. Hepatic inflammation leads to upregulation of IFN-inducible chemokines CXCL9/10/11, ligands for CXCR3, along with increased expression of the adhesion molecules ICAM-1 and VCAM-1 on inflamed human liver sinusoids[25, 30, 31]. We detected a significantly higher level of the chemokine receptor, CXCR3, on intrahepatic MAIT cells in the diseased state, as well as the presence of integrins LFA-1 and VLA-4. VLA-4 is essential in CD8⁺MAIT cell infiltration to central nervous system in multiple sclerosis[32]. Thus, these molecules are involved in MAIT cell recruitment from blood. Intrahepatic V α 7.2⁺CD161⁺⁺ MAIT cells were highly enriched for IL-18R α expression in the livers, which would allow the cells to respond to high local levels of IL-18 in the inflamed hepatic microenvironment[12, 33] and to interact with IL-18 secreted by Kupffer cells, which we observed to reside in the hepatic sinusoid[15, 34].

We observed enrichment of MAIT cells in the liver compared to in blood by flow cytometry and also demonstrated by immunohistochemistry that they were concentrated preferentially in portal tracts, where the majority of CD3⁺CD161⁺V α 7.2⁺ cells localized in the peri-biliary regions, often in close contact with bile ducts. BEC in their normal state secrete the chemokine CCL20 and express the cell adhesion molecule E-cadherin, both of which are enhanced in the diseased state[21]. Intrahepatic MAIT cells in either normal or diseased state expressed the chemokine receptors CCR6 and CXCR6, and the E-cadherin receptor, integrin α E β 7, which would allow them to migrate to the peri-biliary region in response to CCL20 and CXCL16 secreted by BEC[21, 23, 35]. We propose that CCR6⁺, CXCR6⁺ and α E β 7-expressing intrahepatic MAIT cells are retained close to the bile ducts in steady state to provide protection against ascending bacterial infection from the gut[23, 24, 36, 37]. VLA-4 on intrahepatic MAIT cells would also interact with VCAM-1 on the bile ducts, an interaction known to provide survival signals for lymphocytes[38]. Thus, activated, effector

memory MAIT cells in the human liver are ready to protect the biliary mucosa in both the steady and diseased state[39, 40].

A higher prevalence of intrahepatic MAIT cells around bile ducts was apparent by immunohistochemistry in PSC compared to other chronic liver diseases, including other biliary diseases such as PBC. This is an interesting observation as PSC is a biliary disease driven by mucosal T cells and associated with recurrent ascending infections[41]. Surprisingly, although MAIT cells are found in the gut and associated with inflammatory bowel disease and colonic cancer[29, 40], we detected very few cells that expressed the gut-homing integrin $\alpha 4\beta 7$ or chemokine receptor CCR9, suggesting that hepatic MAIT cells are most likely not derived from the gut.

Increased frequency of MAIT cells in the hepatic parenchyma of patients with severe seronegative acute liver failure was also noted with immunohistochemistry. Seronegative hepatitis is characterized by a progressive, marked hepatocyte-necrosis leading to acute liver failure and is associated with bacterial translocation[42]. Therefore, in this scenario, the effector functions of MAIT cells might contribute to acute liver injury. Intrahepatic cells not only expressed CD26 constitutively[39, 43], but also expressed CD39 and/or CD73, two ectoenzymes involved in immune regulation via generation of immunosuppressive adenosine[44]. Thus, hepatic MAIT cells include cells with both effector and regulatory functions which may confer either pro-inflammatory or immune-regulatory properties depending on the context and timing of the hepatic inflammation.

There needs to be local protection against intestinal pathogens at the biliary epithelium due to its continuity with the gut flora where both commensal and pathogenic bacteria reside[45]. Our data suggest that MAIT cells could play an important role in this. The recognition of antigen by MAIT cells is mediated via the MR1 molecule, which can present microbial vitamin B-derived compounds in its antigen-binding cleft[7]. MR1 is expressed on APC such as B cells[27]. We noted close localization of these cells around bile ducts, and they mediated the activation of diseased liver-infiltrating MAIT cells in the presence of *E. coli*. Human BEC can also act as non-professional APC under some circumstances[19] [46]. We found that indeed, both LI-MAIT and blood MAIT cells co-cultured with BEC exposed to *E. coli* degranulated and secreted IFN- γ . Importantly, this mechanism was MR1-dependent but independent of IL-12 and IL-18 cytokines, despite the presence of these receptors on intrahepatic MAIT cells. This finding suggests that MAIT cells will only be fully activated in the presence of bacteria that have breached the epithelial barrier. Intrahepatic MAIT cells also secreted IL-17 and therefore likely possess not only an antibacterial function but also mucosa-regeneration properties similar to other Th17 cells[21, 47].

CD40L upregulation was also observed on MAIT cells in response to bacterial presentation by BEC. CD40L on immune cells such as lymphocytes and macrophages can induce BEC apoptosis via epithelial CD40[33, 48, 49]. CD40L upregulation was mediated both by *E. coli* presented by MR1 as well as IL-12 and IL-18, providing a mechanism through which MAIT cells could drive bile duct damage in inflammatory liver disease in the absence of infection, in a non-specific manner. Intrahepatic CD4⁺, CD8⁺ and DN MAIT cells also secreted TNF-

α and IFN- γ , which would be expected to contribute to their proinflammatory functional activity, and expressed granzyme B, which is crucial for cytolytic activity[11, 39, 50, 51].

Taken together, our findings provide the first evidence that intrahepatic MAIT cells in the human liver can respond to bacterial antigens presented by the biliary epithelium, B cells or macrophages by expressing IFN- γ , TNF- α , CD40L, and degranulating, and they have the capacity to secrete IL-17 upon activation. This suggests that intrahepatic MAIT cells play an important part in the biliary firewall that prevents bacteria from the gut entering the normal liver and then the systemic circulation via the bile ducts. We therefore propose that intrahepatic MAIT cells act as guardians in biliary mucosa protection at steady normal state. Whether they play a role in the pathogenesis of inflammatory liver disease requires further study.

Supplementary Material

Refer to Web version on PubMed Central for supplementary material.

Acknowledgements

We would like to thank Gillian Muirhead and Chantelle Endeley for their assistance with cell isolation and Dr Matthew Graeme MacKenzie for his help with cell sorting. We would also like to thank medical, surgical and anesthetic staff from UHB NHS Foundation Trust for their help with tissue acquirement.

Funding bodies

Dr Ye Htun Oo was funded by Clinician Scientist Award from Medical Research Council. UHB charity, NIHR BRU in liver disease Birmingham and Bowel Disease Research Foundation Grant.

Professor Paul Klenerman was funded by the Wellcome Trust (WT 091663MA), NIHR Biomedical Research Centre, Oxford, NIHR Senior Investigator award, Oxford Martin School, MRC STOP-HCV consortium and NIH NIAID 1U19AI082630-02

References

- [1]. Treiner E, Duban L, Bahram S, Radosavljevic M, Wanner V, Tilloy F, et al. Selection of evolutionarily conserved mucosal-associated invariant T cells by MR1. *Nature*. 2003; 422:164–169. [PubMed: 12634786]
- [2]. Reantragoon R, Corbett AJ, Sakala IG, Gherardin NA, Furness JB, Chen Z, et al. Antigen-loaded MR1 tetramers define T cell receptor heterogeneity in mucosal-associated invariant T cells. *J Exp Med*. 2013; 210:2305–2320. [PubMed: 24101382]
- [3]. Billerbeck E, Kang YH, Walker L, Lockstone H, Grafmueller S, Fleming V, et al. Analysis of CD161 expression on human CD8+ T cells defines a distinct functional subset with tissue-homing properties. *Proc Natl Acad Sci USA*. 2010; 107:3006–3011.
- [4]. Kang YH, Seigel B, Bengsch B, Fleming VM, Billerbeck E, Simmons R, et al. CD161(+)CD4(+) T cells are enriched in the liver during chronic hepatitis and associated with co-secretion of IL-22 and IFN-gamma. *Front Immunol*. 2012; 3:346. [PubMed: 23181064]
- [5]. Martin E, Treiner E, Duban L, Guerri L, Laude H, Toly C, et al. Stepwise development of MAIT cells in mouse and human. *PLoS Biol*. 2009; 7:e54. [PubMed: 19278296]
- [6]. Huang S, Gilfillan S, Cella M, Miley MJ, Lantz O, Lybarger L, et al. Evidence for MR1 antigen presentation to mucosal-associated invariant T cells. *J Biol Chem*. 2005; 280:21183–21193. [PubMed: 15802267]
- [7]. Kjer-Nielsen L, Patel O, Corbett AJ, Le Nours J, Meehan B, Liu L, et al. MR1 presents microbial vitamin B metabolites to MAIT cells. *Nature*. 2012; 491:717–723. [PubMed: 23051753]

- [8]. Ussher JE, Klenerman P, Willberg CB. Mucosal-associated invariant T-cells: new players in anti-bacterial immunity. *Front Immunol.* 2014; 5:450. [PubMed: 25339949]
- [9]. Meierovics A, Yankelevich WJ, Cowley SC. MAIT cells are critical for optimal mucosal immune responses during in vivo pulmonary bacterial infection. *Proc Natl Acad Sci U S A.* 2013; 110:E3119–3128. [PubMed: 23898209]
- [10]. Booth JS, Salerno-Goncalves R, Blanchard TG, Patil SA, Kader HA, Safta AM, et al. Mucosal-Associated Invariant T Cells in the Human Gastric Mucosa and Blood: Role in *Helicobacter pylori* Infection. *Front Immunol.* 2015; 6:466. [PubMed: 26441971]
- [11]. Kurioka A, Ussher JE, Cosgrove C, Clough C, Fergusson JR, Smith K, et al. MAIT cells are licensed through granzyme exchange to kill bacterially sensitized targets. *Mucosal Immunol.* 2014
- [12]. Ussher JE, Bilton M, Attwod E, Shadwell J, Richardson R, de Lara C, et al. CD161⁺⁺ CD8⁺ T cells, including the MAIT cell subset, are specifically activated by IL-12+IL-18 in a TCR-independent manner. *Eur J Immunol.* 2014; 44:195–203. [PubMed: 24019201]
- [13]. Le Bourhis L, Martin E, Peguillet I, Guihot A, Froux N, Core M, et al. Antimicrobial activity of mucosal-associated invariant T cells. *Nat Immunol.* 2010; 11:701–708. [PubMed: 20581831]
- [14]. Oo YH, Adams DH. The role of chemokines in the recruitment of lymphocytes to the liver. *J Autoimmun.* 2010; 34:45–54. [PubMed: 19744827]
- [15]. Balmer ML, Slack E, de Gottardi A, Lawson MA, Hapfelmeier S, Miele L, et al. The liver may act as a firewall mediating mutualism between the host and its gut commensal microbiota. *Sci Transl Med.* 2014; 6:237ra266.
- [16]. Tang XZ, Jo J, Tan AT, Sandalova E, Chia A, Tan KC, et al. IL-7 licenses activation of human liver intrasinusoidal mucosal-associated invariant T cells. *J Immunol.* 2013; 190:3142–3152. [PubMed: 23447689]
- [17]. Hubscher SG. Histological grading and staging in chronic hepatitis: clinical applications and problems. *J Hepatol.* 1998; 29:1015–1022. [PubMed: 9875653]
- [18]. Racanelli V, Rehermann B. The liver as an immunological organ. *Hepatology.* 2006; 43:S54–S62. [PubMed: 16447271]
- [19]. Schrupf E, Tan C, Karlsen TH, Sponheim J, Bjorkstrom NK, Sundnes O, et al. The Biliary Epithelium Presents Antigens to and Activates Natural Killer T Cells. *Hepatology.* 2015
- [20]. Le Bourhis L, Dusseaux M, Bohineust A, Bessoles S, Martin E, Premel V, et al. MAIT cells detect and efficiently lyse bacterially-infected epithelial cells. *PLoS Pathog.* 2013; 9:e1003681. [PubMed: 24130485]
- [21]. Oo YH, Banz V, Kavanagh D, Liaskou E, Withers DR, Humphreys E, et al. CXCR3-dependent recruitment and CCR6-mediated positioning of Th-17 cells in the inflamed liver. *J Hepatol.* 2012; 57:1044–1051. [PubMed: 22796894]
- [22]. Miley MJ, Truscott SM, Yu YY, Gilfillan S, Fremont DH, Hansen TH, et al. Biochemical features of the MHC-related protein 1 consistent with an immunological function. *J Immunol.* 2003; 170:6090–6098. [PubMed: 12794138]
- [23]. Heydtmann M, Lalor PF, Eksteen JA, Hubscher SG, Briskin M, Adams DH. CXC chemokine ligand 16 promotes integrin-mediated adhesion of liver-infiltrating lymphocytes to cholangiocytes and hepatocytes within the inflamed human liver. *J Immunol.* 2005; 174:1055–1062. [PubMed: 15634930]
- [24]. Grant AJ, Lalor PF, Salmi M, Jalkanen S, Adams DH. Homing of mucosal lymphocytes to the liver in the pathogenesis of hepatic complications of inflammatory bowel disease. *Lancet.* 2002; 359:150–157. [PubMed: 11809275]
- [25]. Curbishley SM, Eksteen B, Gladue RP, Lalor P, Adams DH. CXCR3 Activation Promotes Lymphocyte Transendothelial Migration across Human Hepatic Endothelium under Fluid Flow. *Am J Pathol.* 2005; 167:887–899. [PubMed: 16127166]
- [26]. Eksteen B, Grant AJ, Miles A, Curbishley SM, Lalor PF, Hubscher SG, et al. Hepatic endothelial CCL25 mediates the recruitment of CCR9⁺ gut-homing lymphocytes to the liver in primary sclerosing cholangitis. *J Exp Med.* 2004; 200:1511–1517. [PubMed: 15557349]
- [27]. Salerno-Goncalves R, Rezwan T, Szein MB. B cells modulate mucosal associated invariant T cell immune responses. *Front Immunol.* 2014; 4:511. [PubMed: 24432025]

- [28]. Le Bourhis L, Mburu YK, Lantz O. MAIT cells, surveyors of a new class of antigen: development and functions. *Curr Opin Immunol.* 2013; 25:174–180. [PubMed: 23422835]
- [29]. Serriari NE, Eoche M, Lamotte L, Lion J, Fumery M, Marcelo P, et al. Innate mucosal-associated invariant T (MAIT) cells are activated in inflammatory bowel diseases. *Clin Exp Immunol.* 2014; 176:266–274. [PubMed: 24450998]
- [30]. Lalor PF, Adams DH. Adhesion of lymphocytes to hepatic endothelium. *MolPathol.* 1999; 52:214–219.
- [31]. Lalor PF, Clements JM, Pigott R, Humphries MJ, Spragg JH, Nash GB. Association between receptor density, cellular activation, and transformation of adhesive behavior of flowing lymphocytes binding to VCAM-1. *EurJImmunol.* 1997; 27:1422–1426.
- [32]. Willing A, Leach OA, Ufer F, Attfield KE, Steinbach K, Kursawe N, et al. CD8(+) MAIT cells infiltrate into the CNS and alterations in their blood frequencies correlate with IL-18 serum levels in multiple sclerosis. *Eur J Immunol.* 2014; 44:3119–3128. [PubMed: 25043505]
- [33]. Alabraba EB, Lai V, Boon L, Wigmore SJ, Adams DH, Afford SC. Coculture of human liver macrophages and cholangiocytes leads to CD40-dependent apoptosis and cytokine secretion. *Hepatology.* 2007
- [34]. Ikeda A, Aoki N, Kido M, Iwamoto S, Nishiura H, Maruoka R, et al. Progression of autoimmune hepatitis is mediated by IL-18-producing dendritic cells and hepatic CXCL9 expression in mice. *Hepatology.* 2014; 60:224–236. [PubMed: 24700550]
- [35]. Grant AJ, Lalor PF, Hubscher SG, Briskin M, Adams DH. MAdCAM-1 expressed in chronic inflammatory liver disease supports mucosal lymphocyte adhesion to hepatic endothelium (MAdCAM-1 in chronic inflammatory liver disease). *Hepatology.* 2001; 33:1065–1072. [PubMed: 11343233]
- [36]. Eksteen B, Miles A, Curbishley SM, Tselepis C, Grant AJ, Walker LS, et al. Epithelial Inflammation Is Associated with CCL28 Production and the Recruitment of Regulatory T Cells Expressing CCR10. *JImmunol.* 2006; 177:593–603. [PubMed: 16785557]
- [37]. Shields PL, Morland CM, Salmon M, Qin S, Hubscher SG, Adams DH. Chemokine and chemokine receptor interactions provide a mechanism for selective T cell recruitment to specific liver compartments within hepatitis C-infected liver. *JImmunol.* 1999; 163:6236–6243. [PubMed: 10570316]
- [38]. Afford SC, Humphreys EH, Reid DT, Russell CL, Banz VM, Oo Y, et al. Vascular cell adhesion molecule 1 expression by biliary epithelium promotes persistence of inflammation by inhibiting effector T-cell apoptosis. *Hepatology.* 2014; 59:1932–1943. [PubMed: 24338559]
- [39]. Dusseaux M, Martin E, Serriari N, Peguillet I, Premel V, Louis D, et al. Human MAIT cells are xenobiotic-resistant, tissue-targeted, CD161hi IL-17-secreting T cells. *Blood.* 2011; 117:1250–1259. [PubMed: 21084709]
- [40]. Sundstrom P, Ahlmanner F, Akeus P, Sundquist M, Alsen S, Yrlid U, et al. Human Mucosa-Associated Invariant T Cells Accumulate in Colon Adenocarcinomas but Produce Reduced Amounts of IFN-gamma. *J Immunol.* 2015; 195:3472–3481. [PubMed: 26297765]
- [41]. Hirschfield GM, Karlsen TH, Lindor KD, Adams DH. Primary sclerosing cholangitis. *Lancet.* 2013; 382:1587–1599. [PubMed: 23810223]
- [42]. Wigg AJ, Gunson BK, Mutimer DJ. Outcomes following liver transplantation for seronegative acute liver failure: experience during a 12-year period with more than 100 patients. *Liver Transpl.* 2005; 11:27–34. [PubMed: 15690533]
- [43]. Sharma PK, Wong EB, Napier RJ, Bishai WR, Ndung'u T, Kasprovicz VO, et al. High expression of CD26 accurately identifies human bacteria-reactive MR1-restricted MAIT cells. *Immunology.* 2015
- [44]. Deaglio S, Dwyer KM, Gao W, Friedman D, Usheva A, Erat A, et al. Adenosine generation catalyzed by CD39 and CD73 expressed on regulatory T cells mediates immune suppression. *J Exp Med.* 2007; 204:1257–1265. [PubMed: 17502665]
- [45]. Ma HD, Wang YH, Chang C, Gershwin ME, Lian ZX. The intestinal microbiota and microenvironment in liver. *Autoimmun Rev.* 2015; 14:183–191. [PubMed: 25315744]

- [46]. Rong GH, Yang GX, Ando Y, Zhang W, He XS, Leung PS, et al. Human intrahepatic biliary epithelial cells engulf blebs from their apoptotic peers. *Clin Exp Immunol*. 2013; 172:95–103. [PubMed: 23480189]
- [47]. Harada K, Shimoda S, Sato Y, Isse K, Ikeda H, Nakanuma Y. Periductal interleukin-17 production in association with biliary innate immunity contributes to the pathogenesis of cholangiopathy in primary biliary cirrhosis. *ClinExpImmunol*. 2009; 157:261–270.
- [48]. Afford SC, Rhandawa S, Eliopoulos AG, Hubscher SG, Young LS, Adams DH. CD40 activation induces apoptosis in cultured human hepatocytes via induction of cell surface FasL expression and amplifies Fas mediated hepatocyte death during allograft rejection. *J Exp Med*. 1999; 189:441–446. [PubMed: 9892626]
- [49]. Humphreys EH, Williams KT, Adams DH, Afford SC. Primary and malignant cholangiocytes undergo CD40 mediated Fas dependent apoptosis, but are insensitive to direct activation with exogenous Fas ligand. *PLoS One*. 2010; 5:e14037. [PubMed: 21103345]
- [50]. Walker LJ, Kang YH, Smith MO, Tharmalingham H, Ramamurthy N, Fleming VM, et al. Human MAIT and CD8alphaalpha cells develop from a pool of type-17 precommitted CD8+ T cells. *Blood*. 2012; 119:422–433. [PubMed: 22086415]
- [51]. Fergusson JR, Smith KE, Fleming VM, Rajoriya N, Newell EW, Simmons R, et al. CD161 Defines a Transcriptional and Functional Phenotype across Distinct Human T Cell Lineages. *Cell Rep*. 2014; 9:1075–1088. [PubMed: 25437561]

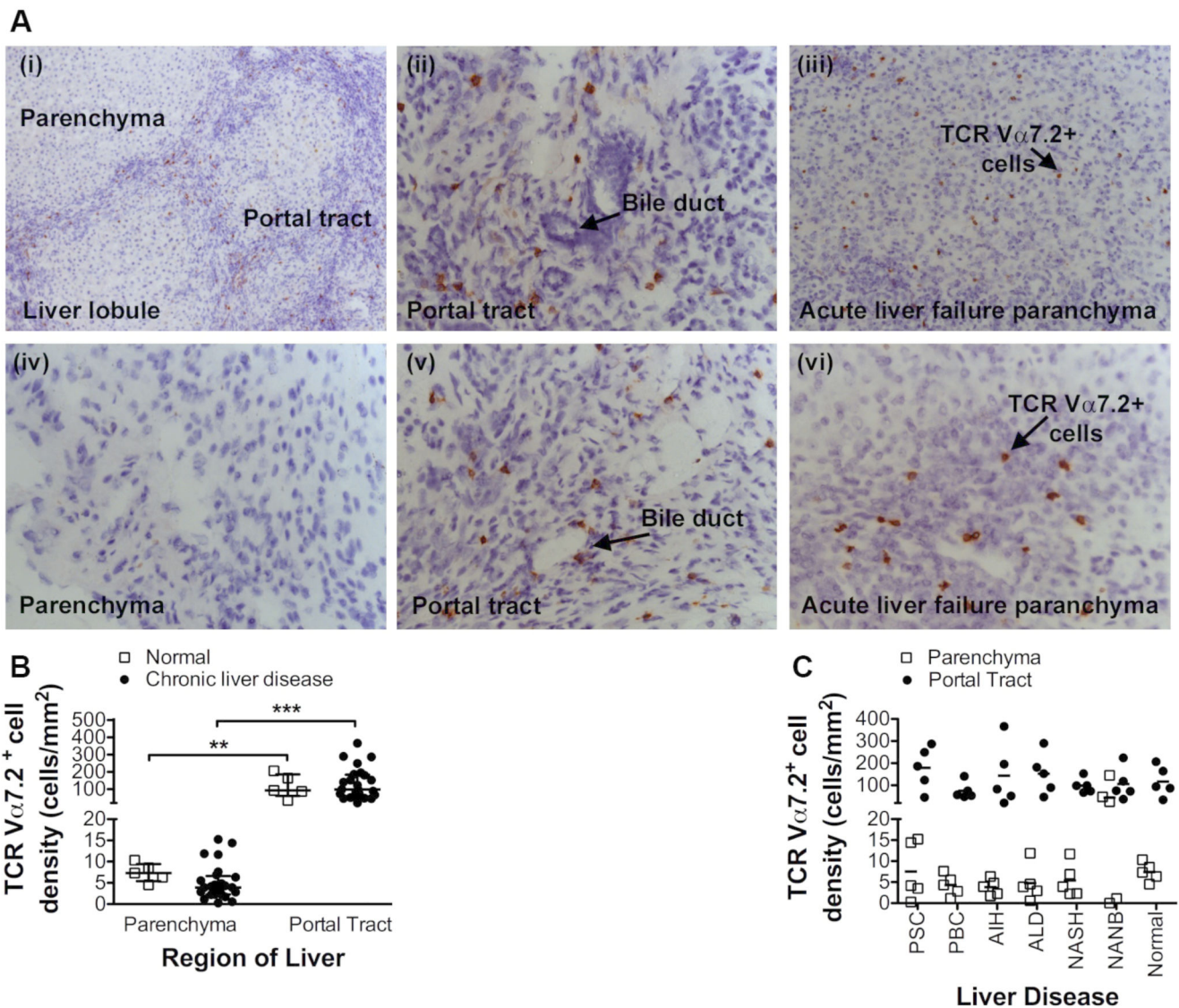


Figure 1. Peri-biliary localisation of V α 7.2⁺ cells in chronic liver diseases

(A) Representative staining for V α 7.2 on frozen liver sections viewed at x10 (i and iii) or x40 (ii, iv, v and vi) magnification. Distribution of V α 7.2⁺ cells in the parenchyma (i and iv) and portal tract (i, ii and v) in PSC and in the parenchyma (iii and vi) in seronegative acute liver failure. (B) Densities of V α 7.2⁺ cells in parenchyma and portal tracts of normal and chronically diseased livers (**= p <0.01; ***= p <0.0001 by Mann-Whitney test). (C) V α 7.2⁺ cell density data according to diseases. Data are median \pm interquartile range.

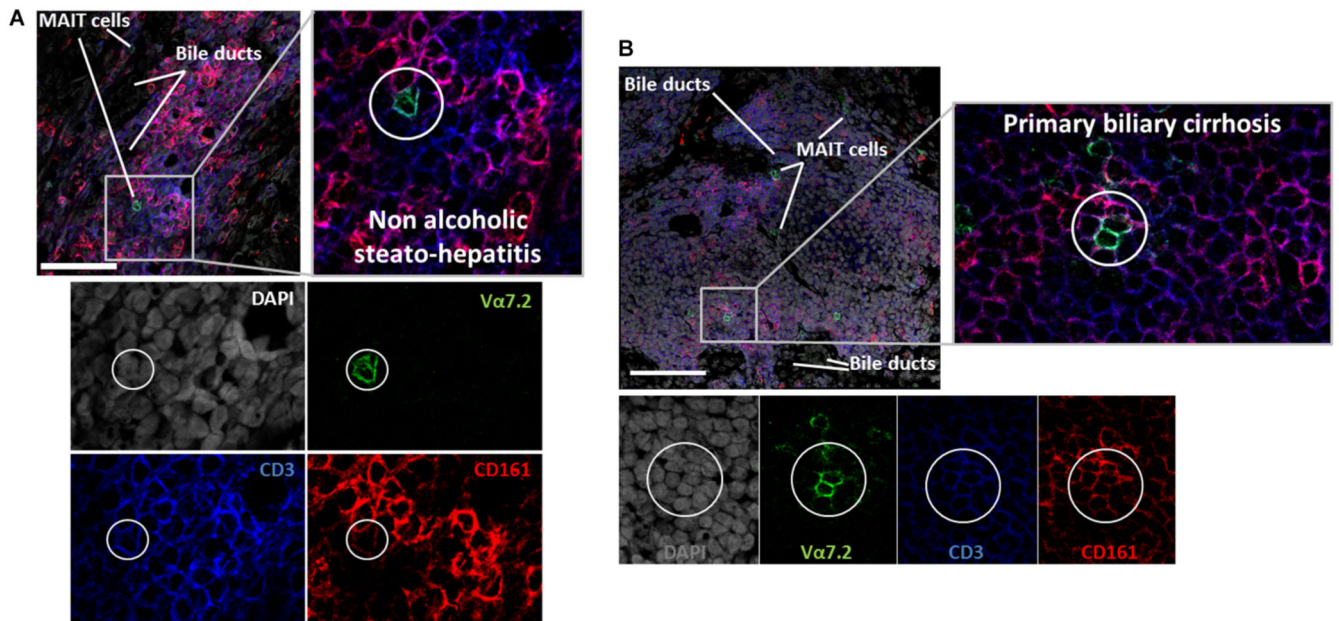


Figure 2. $CD3^+CD161^+Va7.2^+$ cells reside close to bile ducts in portal tracts

Representative confocal immunofluorescence staining for CD3, CD161 and Va7.2 on frozen sections from explanted human livers diagnosed with Non Alcoholic Steato-Hepatitis (A) and Primary Biliary Cirrhosis (B). DAPI nuclear stain reveals liver architecture indicating sites of bile ducts. Images are representative of staining of four different diseased livers, scale bar shows 100 μ m.

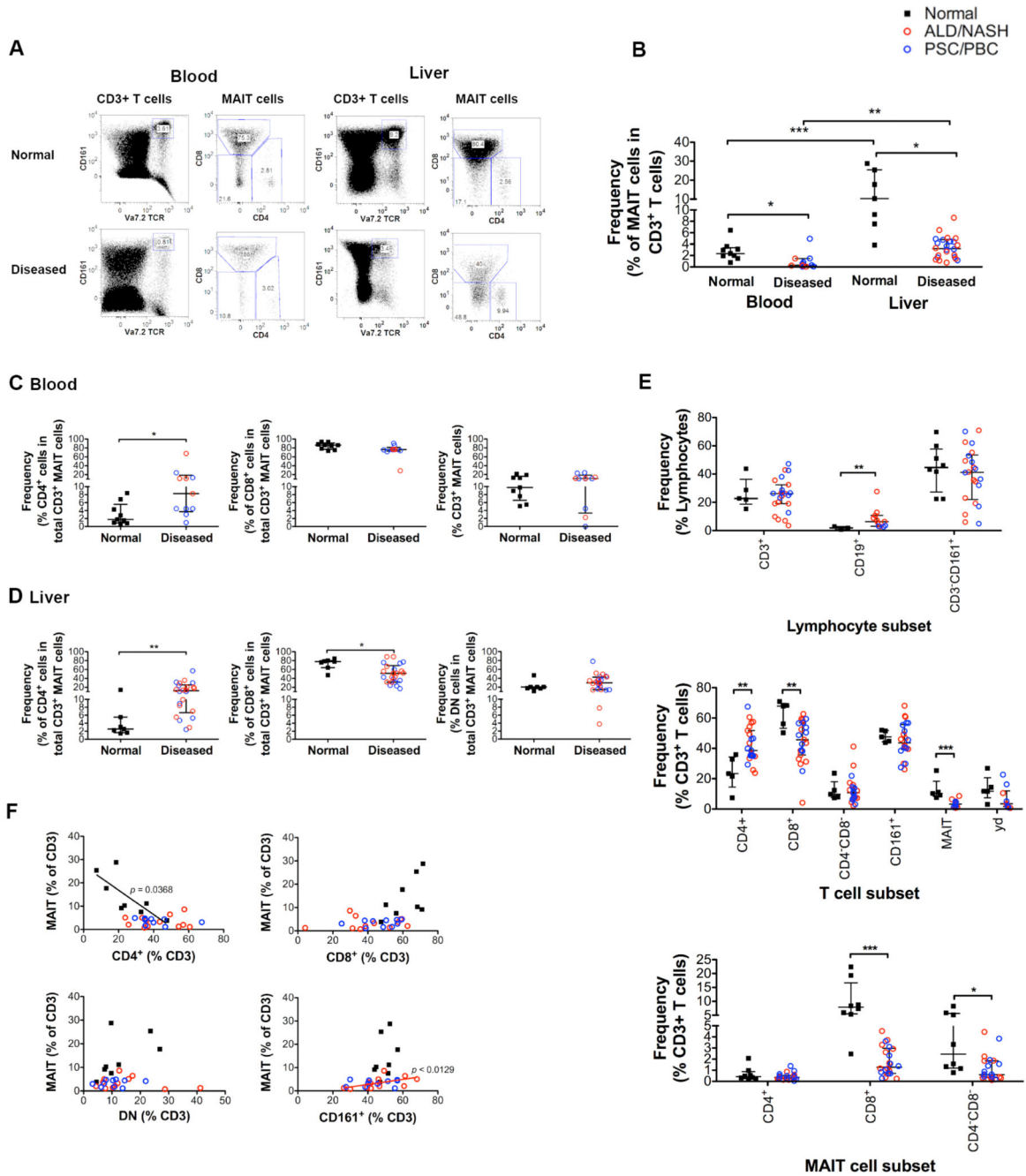


Figure 3. Flow cytometric analysis of MAIT cell frequencies in chronic liver disease and their correlations with other immune subsets
 Representative FACS plots (A) and summary frequency data for total CD3⁺ MAIT (B) and CD4⁺, CD8⁺ and CD4⁻CD8⁻ (DN) MAIT subsets in normal and diseased blood (C) and liver (D). (E) Frequencies of intrahepatic MAIT and other immune cells. (F) Correlation of CD3⁺ MAIT cell frequencies with total CD4⁺, CD8⁺, DN and CD161⁺ T cell frequencies in normal and diseased livers. Data are median ± interquartile range. *= $p < 0.05$; **= $p < 0.01$; ***= $p < 0.001$ by Mann Whitney test (B-E) or Spearman’s rank correlation (F).

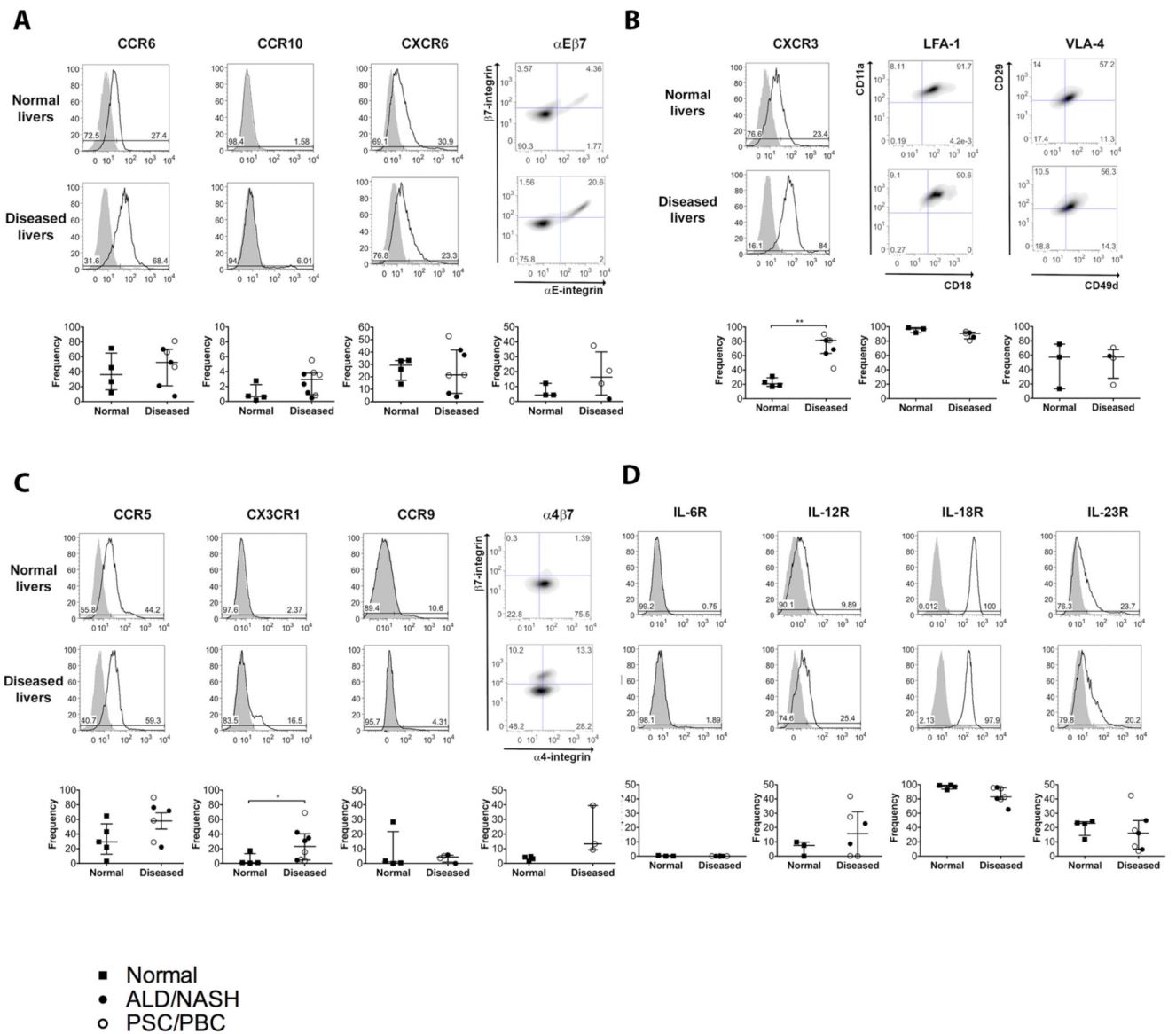


Figure 4. Expressions of tissue-homing chemokine, integrin and cytokine receptors on intrahepatic MAIT cells in normal and chronic liver diseases
Chemokine receptor and integrin expression profiles (**A**, **B** and **C**) and cytokine receptor profiles (**D**) were determined by flow cytometry gating on the total CD3⁺ MAIT cell population. Representative overlays for marker (line) and isotype control (grey shading) and total summary data are shown. Summary data are median ± interquartile range. *=*p*<0.05; **=*p*<0.01; ***=*p*<0.001 by Mann Whitney test.

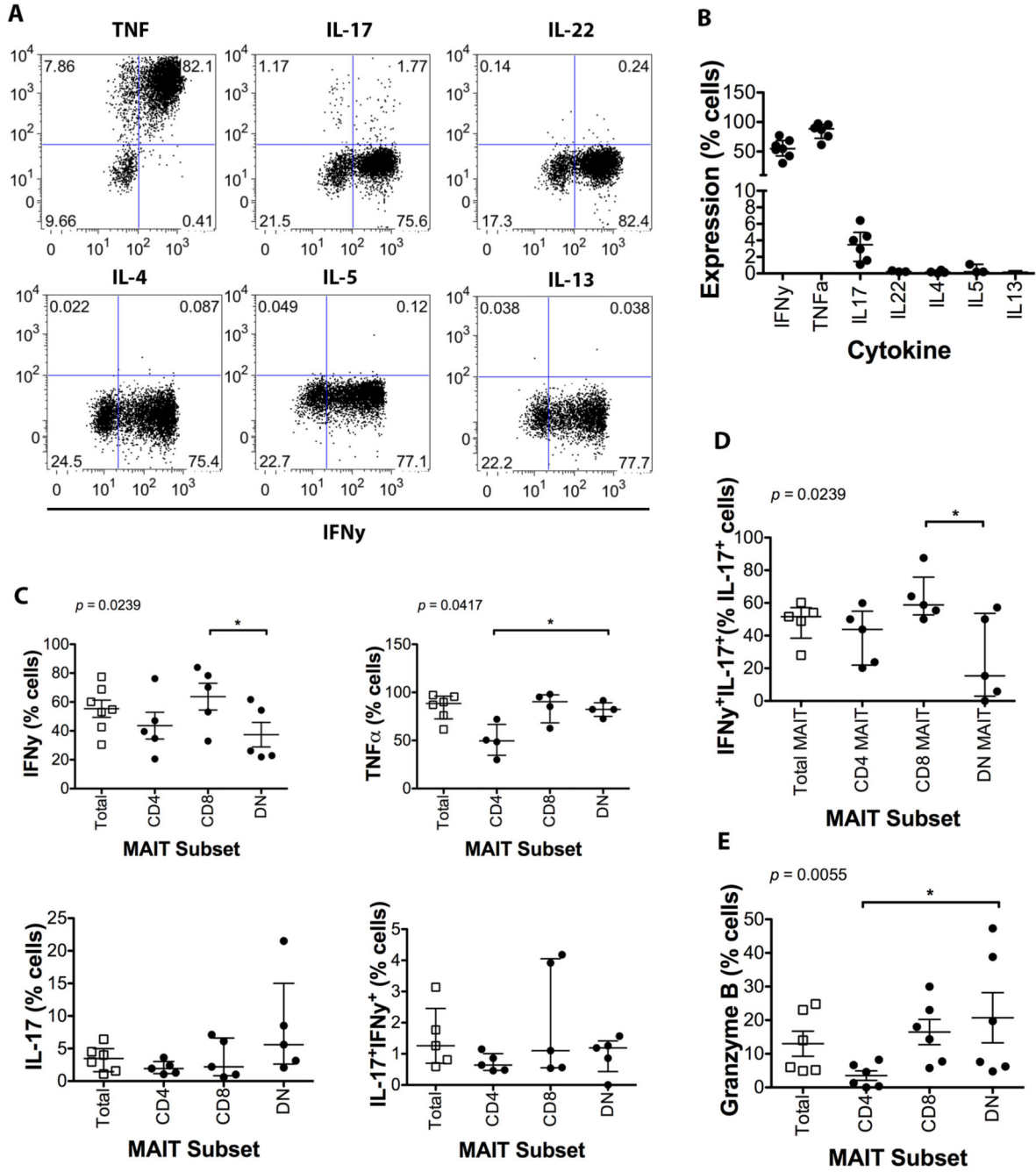
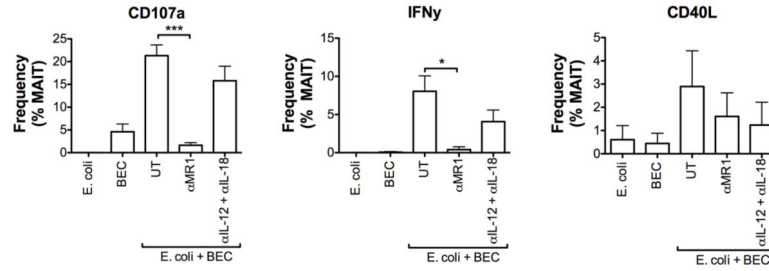
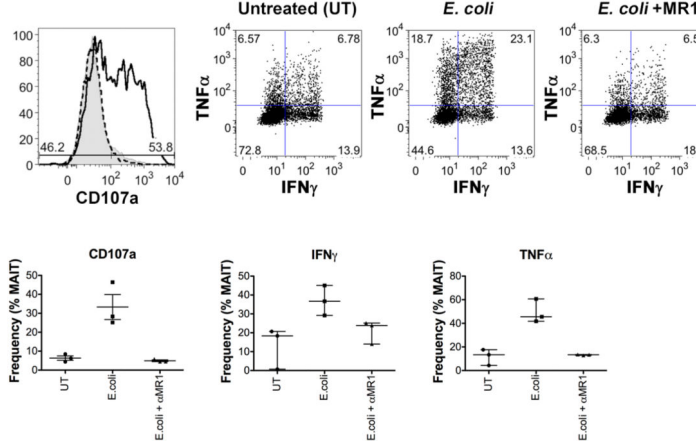


Figure 5. Cytokine and cytolytic factor expression by liver infiltrating MAIT cells
 Intrahepatic MAIT cell production of Th1 (IFN- γ , TNF- α), Th2 (IL-4, IL-5, IL-13) and Th17 (IL-17, IL-22) cytokines was examined by flow cytometry. Representative dot-plots for each cytokine vs. IFN- γ , expression (A) and summary data by MAIT cells (B) and MAIT cell subsets (C and D) are shown. Summary data for ex vivo granzyme B expression in total MAIT and MAIT cell subsets (E). Data are median \pm interquartile range. *= p <0.05; **= p <0.01; by Dunn's post-hoc test following Friedman's test.

A Blood derived macrophages presentation of *E. coli* to blood MAIT cells



B THP1 cell presentation of *E. coli* to liver infiltrated MAIT cells



C Liver B cells presentation of *E. coli* to liver infiltrated MAIT cells

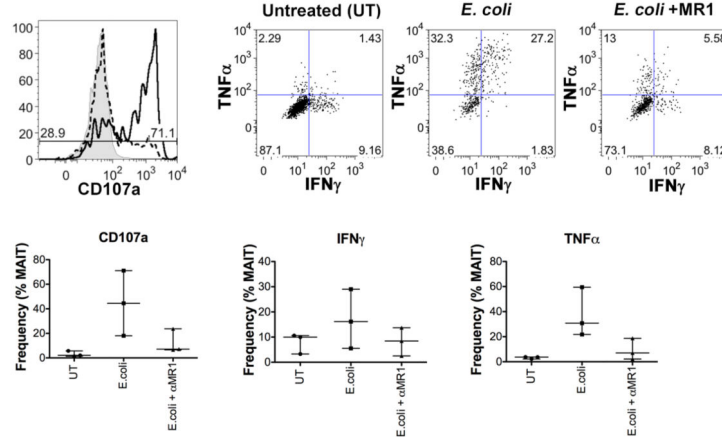
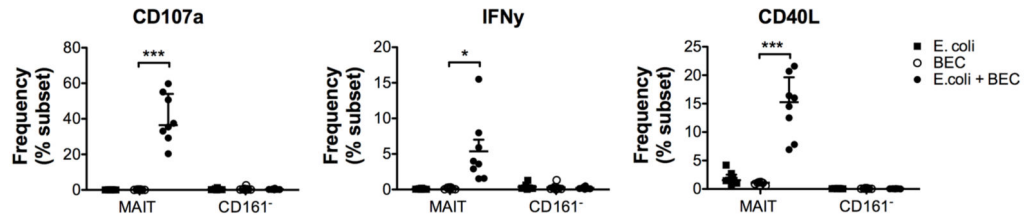
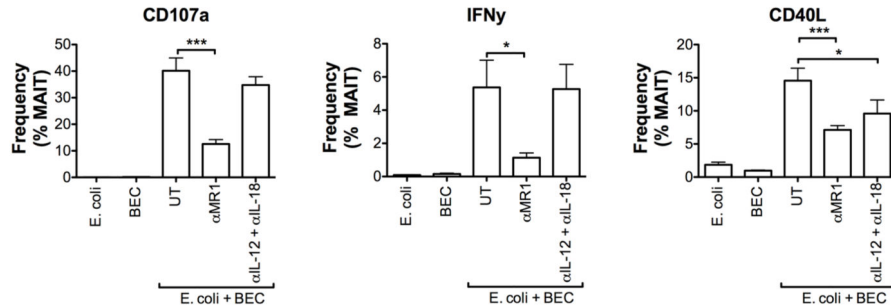


Figure 6. MR1-dependent activation of blood and liver MAIT cells by professional and non-professional antigen presenting cells (APC) exposed to bacteria
 APC exposed to *E. coli* were co-cultured with MAIT cells and their activation examined by flow cytometry for CD107a, IFN- γ , TNF- α , CD40L. Dependency on MR1 or IL-12 and IL-18 was assessed by antibody blocking. Activation of blood MAIT by blood macrophages (A) and activation of liver MAIT by THP1 cells (B) and autologous intrahepatic B cells (C) were analyzed. Data are mean \pm SEM (A) and median \pm interquartile range (B and C).
 *= $p < 0.05$; ***= $p < 0.001$ by paired *t*-test. UT=untreated

A Primary BEC presentation of *E. coli* to blood MAIT cells



B MR1 dependency of MAIT activation by primary BEC



C Primary BEC cell presentation of *E. coli* to liver infiltrated MAIT cells

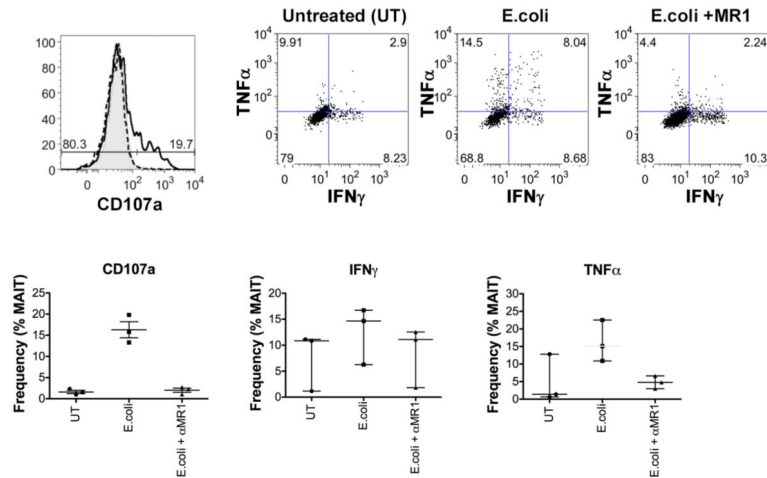


Figure 7. Bacterially exposed primary human biliary epithelial cells activate both blood and liver MAIT cells in an MR1 dependent manner

Biliary epithelial cells exposed to *E. coli* were co-cultured with sorted blood CD8⁺ (A and B) or liver CD3⁺ (C) T cells and activation of CD161⁺⁺ Va7.2⁺ MAIT cells examined by flow cytometry for CD107a, IFN γ -, TNF α , CD40L. Dependency on MR1 or cytokines IL-12 and IL-18 was assessed using function-blocking antibodies. Data are mean \pm SEM (A and B) and median \pm interquartile range (C). *= p <0.05; ***= p <0.001 by *t*-test. UT=untreated.