

Published in final edited form as:

*Nat Genet.* 2019 December ; 51(12): 1670–1678. doi:10.1038/s41588-019-0512-x.

## Comparative genetic architectures of schizophrenia in East Asian and European populations

*A full list of authors and affiliations appears at the end of the article.*

# These authors contributed equally to this work.

### Abstract

Schizophrenia is a debilitating psychiatric disorder with approximately 1% lifetime risk globally. Large-scale schizophrenia genetic studies have reported primarily on European ancestry samples,

Users may view, print, copy, and download text and data-mine the content in such documents, for the purposes of academic research, subject always to the full Conditions of use:[http://www.nature.com/authors/editorial\\_policies/license.html#terms](http://www.nature.com/authors/editorial_policies/license.html#terms)

\*Correspondence should be addressed to H.H. (hhuang@broadinstitute.org), Y.S. (shiyongyong@gmail.com), R.S.K. (rene.kahn@mssm.edu), Xiancang Ma (maxiancang@163.com), J. Liu (liuj3@gis.a-star.edu.sg), M.T. (mtsuang@ucsd.edu), and W.Y. (dryue@bjmu.edu.cn).

<sup>36</sup>A list of members and affiliations appears in the Supplementary Note.

<sup>60</sup>These authors jointly supervised the work.

### Ethics.

The study protocols were approved by the institutional review board at each center involved with recruitment. Informed consent and permission to share the data were obtained from all subjects, in compliance with the guidelines specified by the recruiting centre's institutional review board. Samples recruited in mainland China were processed and analyzed in a Chinese server to comply with the Interim Measures for the Administration of Human Genetic Resources (regulation from the Ministry of Science and Technology of the People's Republic of China). We set up the computer codes on the Chinese server so that analyses performed on these samples were exactly the same as other samples. Summary statistics from these Chinese samples, with no individual-level data, were then shared and combined with the rest of EAS samples.

### Data availability.

Genome-wide summary statistics from EAS samples, EUR samples ("49 EUR samples") and all samples (EAS and EUR combined) in this study can be downloaded from <https://www.med.unc.edu/pgc/results-and-downloads/>. Individual-level genotype data for EAS samples are available upon request from the contact authors (Supplementary Note). Alternately, requests can be made to the Psychiatric Genomics Consortium (PGC). In this case, access to individual-level genotypes from samples recruited outside of mainland China will go through the PGC "fast-track" approval. Access to individual-level genotypes from samples recruited within mainland China has to be approved by the individual Chinese contact authors (Supplementary Note), and are subject to the policies and approvals from the Human Genetic Resource Administration, Ministry of Science and Technology of the People's Republic of China. Individual-level genotypes from samples recruited within mainland China have been stored and kept in a server physically located in mainland China. Analyses were performed on these samples using the same computer codes as those used for other EAS and EUR samples, which are available in the Code availability section.

### Author contributions

Genotype quality control and principal component analyses: M.L., H.H. Association analysis: M.L., C.-Y.C. Heritability and genetic correlation: M.L., B.C.B. Natural selection: X.M., C.-Y.C., S.X. Partitioned heritability: J.B. Gene-set analysis: Z.L., M.L., H.G. Polygenic risk score: A.R.M., C.-Y.C., R.L. Fine-mapping: H.H. Replication analysis: P.H. Data acquisition, generation, quality control and analysis: IMH-1,2: M.L., J.L., J.J.L.; HNK-1: P.Sh.; JPN-1: A.T., Y.K., M.K., M.I., N.I.; BIX-1-3,5: Z.L., L.H., Y.S.; XJU-1 and BIX-4: W.Z., L.H., S.Q., F.Z., X.C.M.; UMC-1, SIX-1: L.G., H.M., Z.X., P.Sk., X.Y., R.S.K., Genetic REsearch on schizophrenia in Network-China and Netherland (GREAT-CN); UWA-1: B.B., A.K., D.B.W., S.G.S., Indonesia Schizophrenia Consortium; BJM1-4: H.Y., D.Z., W.Y.; TAI-1,2: C-M.L., W.J.C., S.F., S.J.G., H-G.H., S.A.M., B.M.N., M.T.; KOR-1: S-W.K., K.S.H.; EUR samples: Schizophrenia Working Group of the Psychiatric Genomics Consortium. Primary drafting of the manuscript: M.L., C.-Y.C., S.G.S., M.C.O'D., M.J.D., H.H. Major contribution to drafting of the manuscript: A.R.M., S.J.G., B.B., S.P., B.J.M., Q.W., K.S.H., M.T., J.L., W.Y., H-G.H., J.B., S.R., P.F.S. Project conception, design, supervision and implementation: H.H., Y.S., R.S.K., X.C.M., J.J.L., M.T., W.Y., S.G.S., K.S.H., N.I., P.Sh., S.Q., B.M.N., M.J.D., M.C.O'D., S.R., P.Sk., L.H., S.E.H. All authors saw, had the opportunity to comment on, and approved the final draft.

### Competing interests

B.M.N. is a member of Deep Genomics Scientific Advisory Board. He also serves as a consultant for Camp4 Therapeutics Corporation, Takeda Pharmaceutical and Biogen. M.J.D. is a founder of Maze Therapeutics. The remaining authors declare no competing interests.

potentially missing important biological insights. Here, we report the largest study to date of East Asian participants (22,778 schizophrenia cases and 35,362 controls), identifying 21 genome-wide significant associations in 19 genetic loci. Common genetic variants that confer risk for schizophrenia have highly similar effects between East Asian and European ancestries ( $r_g = 0.98 \pm 0.03$ ), indicating that the genetic basis of schizophrenia and its biology are broadly shared across populations. A fixed-effect meta-analysis including individuals from East Asian and European ancestries identified 208 significant associations in 176 genetic loci (53 novel). Trans-ancestry fine-mapping reduced the sets of candidate causal variants in 44 loci. Polygenic risk scores had reduced performance when transferred across ancestries, highlighting the importance of including sufficient samples of major ancestral groups to ensure their generalizability across populations.

---

Schizophrenia is an often disabling psychiatric disorder that occurs worldwide with a lifetime risk of about 1%<sup>1</sup>. It is well established that genetic factors contribute to the susceptibility of schizophrenia. Recently, 145 genetic loci have been associated with schizophrenia in samples of primarily European ancestry<sup>2,3</sup> (EUR), but this still represents the tip of the iceberg with respect to common variant liability to the disorder: the highly polygenic nature of common variation underlying this disorder predicts that there are hundreds more loci to be discovered<sup>4</sup>.

Most genetic studies of schizophrenia have been performed in EUR samples, with relatively few studies in other populations<sup>5–8</sup>. This is a substantial deficiency for multiple reasons, particularly as it greatly limits the discovery of biological clues about schizophrenia. For some causal variants, ancestry-related heterogeneity yields varying allele frequency and linkage disequilibrium (LD) patterns such that associations that can be detected in one population may not be readily detected in others. Examples include a nonsense variant in *TBC1D4*, which confers muscle insulin resistance and increases risk for type 2 diabetes, common in Greenland but rare or absent in other populations<sup>9</sup>, several Asian-specific coding variants that influence blood lipids<sup>10</sup>, a variant highly protective against alcoholism that is common in Asian populations but uncommon elsewhere<sup>11</sup>, and two loci associated with major depression<sup>12</sup> that are more common in the Chinese populations than EUR<sup>12,13</sup> (rs12415800: 45% versus 2%; rs35936514: 28% versus 6%).

Even if alleles have similar frequencies across populations, the effects of alleles on risk might be specific to certain populations if there are prominent but local contributions of clinical heterogeneity, gene-environment (GxE) or gene-gene (GxG) interactions. In addition, there have been debates about differences in prevalence, symptomatology, etiology, outcome, and course of illness across geographical regions<sup>14–19</sup>. Understanding the genetic architecture of schizophrenia across populations provides insights into whether any differences represent etiologic heterogeneity on the illness.

Finally, polygenic risk score (PRS) prediction is emerging as a useful tool for studying the effects of genetic liability, identifying more homogeneous phenotypes, and stratifying patients. However, previous studies have shown that prediction accuracy decays with increasing genetic divergence between the risk allele discovery and target datasets<sup>20,21</sup>. The risk predicted, measured as  $R^2$ , was only 45% as accurate in EAS as in EUR individuals when computed from GWAS of Europeans<sup>22</sup>. These differences can be explained by

ancestry-related differences in allele frequencies, LD, and other factors<sup>22</sup>. Importantly, the applicability of training data from EUR studies to those of non-European ancestry has not been fully assessed, leaving uncertainty as to the biological relevance of discoveries made in EUR samples for non-Europeans<sup>21</sup>.

## Results

### Schizophrenia genetic associations in East Asian populations

To our knowledge, this is the first study to combine multiple samples with schizophrenia across East Asia (EAS) to systematically examine the genetic architecture of schizophrenia in individuals of EAS ancestry. We compiled 22,778 schizophrenia cases and 35,362 controls from 20 samples from East Asia (Supplementary Table 1). Individual-level genotypes were available from 16 sample collections (Supplementary Table 1), on which we performed quality control, imputation and association tests (Methods and Supplementary Table 2). Two sample collections (TAI-1 and TAI-2) were trio-based and pseudo-controls were used. Four sample collections made available summary statistics for 22K-31K selected variants (Methods) that had been analyzed in published studies<sup>7,8</sup>. Compared with the latest study using only Chinese individuals<sup>8</sup>, our study has about twice the sample size, and is much more diverse.

We used a two-stage study design (Supplementary Table 1a). Stage 1 included 13 sample collections for which we had individual genotype data (13,305 cases and 16,244 controls after quality control). Stage 2 incorporated the remaining 7 sample collections: full genotype data from 3 sample collections that arrived after the stage 1 data freeze, and summary statistics (for selected variants) from 4 sample collections (Supplementary Table 1). Meta-analyses across stage 1 samples and across all EAS samples were conducted using a fixed-effect model with inverse-variance weighting. QQ plots (Supplementary Fig. 1) showed no inflation of test statistics (indicating that ancestry effects have been well controlled) with  $\lambda_{gc} = 1.14$ ,  $\lambda_{1000} = 1.01$ , and LD Score regression<sup>23</sup> (LDSC) intercept =  $1.0145 \pm 0.011$  using stage 1 samples.

Combining stages 1 and 2, we found 21 genome-wide significant associations at 19 loci (Table 1, Fig. 1a, Supplementary Table 3, and Supplementary Data Sets 1 and 2), an additional 14 associations over the most recent schizophrenia genetic study of Chinese ancestry<sup>8</sup>. Most associations were characterized by marked differences in allele frequencies between the EAS and EUR samples: for 15 of 21 loci, the index variants had a higher minor allele frequencies (MAF) in EAS than EUR. The higher allele frequency potentially confers better power to detect associations in EAS. For example, we identified a locus (Fig. 1b) with the top association (rs374528934) having strong evidence in EAS ( $P = 5 \times 10^{-11}$ ) but not in EUR using the stage 1 samples. rs374528934 has MAF of 45% in EAS but only 0.7% in EUR. No other variant in this locus is significantly associated with schizophrenia in EUR. This locus contains *CACNA2D2* (encoding the calcium channel  $\alpha_{2\delta-2}$  subunit) associated with childhood epilepsy<sup>24,25</sup>, and to which the anticonvulsant medication gabapentin binds, suggesting a path for further therapeutic investigation<sup>25</sup>. This finding also adds new evidence to the calcium signaling pathway suggested to be implicated in psychiatric disorders<sup>26,27</sup>.

## Genetic effects are consistent across populations

For causal variants, heterogeneity of genetic effects across populations could arise from clinical heterogeneity, differences in pathophysiology, environmental differences that change the genetic effects (GxE interaction), or interaction with other genetic factors that may differ in frequency across populations (GxG interaction). Heterogeneity in estimating genetic effect sizes may also be a consequence of differential correlation across genetic markers in a region, when investigating variants that are tagging the causal variant but do not exert any influence on the trait in question. Such heterogeneity does not reflect biological differences, but is rather statistical in nature. While it is assumed that biological pathways underlying complex human disorders are generally consistent across populations, genetic heterogeneity has been observed in other genetically complex disorders<sup>28</sup>. The large EAS sample allowed us to systematically explore the heterogeneity of genetic effects influencing liability to schizophrenia across two major world populations.

Using LDSC<sup>23</sup> and common variants (MAF > 5%) outside of the MHC region, we found that the SNP-heritability of schizophrenia is very similar in EAS ( $0.23 \pm 0.03$ ) and EUR ( $0.24 \pm 0.02$ ) (Methods and Supplementary Fig. 2a). Using the same set of variants, we found that the genetic correlation for schizophrenia between EAS and EUR was indistinguishable from 1 ( $r_g = 0.98 \pm 0.03$ ) (using POPCORN<sup>29</sup>, a method designed for cross-ancestry comparisons). This finding indicates that the common variant genetic architecture of schizophrenia outside of the MHC region is highly consistent across EAS and EUR.

Genetic correlations between schizophrenia and 11 other psychiatric disorders and behavior traits also showed no significant differences when estimated within EUR and across EAS-EUR (Supplementary Fig. 2b). In agreement with recent reports<sup>30–33</sup>, we observed significant positive genetic correlations for schizophrenia with bipolar disorder, major depressive disorder, anorexia nervosa, neuroticism, autism spectrum disorder, and educational attainment. We observed significant negative correlations with general intelligence, fluid intelligence score, prospective memory, and subjective well-being.

We used partitioned LDSC<sup>23</sup> to look for heritability enrichment in diverse functional genomic annotations defined and used in previous publications<sup>34,35</sup> (Methods and Supplementary Fig. 2c,d). Using EAS stage 1 samples, we observed significant enrichment (after Bonferroni correction) in regions conserved across 29 mammals (Conserved LindbladToh<sup>36</sup>). No other annotations were significantly enriched, and there were no significant differences between EUR-only and EAS-only enrichments ( $P = 0.16$ , two-sided paired  $t$  test).

We identified gene-sets that are enriched for schizophrenia genetic associations using MAGMA<sup>37</sup> and gene-set definitions from a recent schizophrenia exome sequencing study<sup>38</sup> (Methods). Despite large differences in sample size and genetic background, the gene-sets implicated in EAS and EUR samples were highly consistent: we observed no significant differences between gene-set ranks using the EAS samples from the ranks using EUR samples ( $P = 0.72$ , Wilcoxon test, two-sided). In addition, 9 of the top 10 gene-sets

identified using the EAS samples are also among the top 10 gene-sets identified using EUR samples (Supplementary Fig. 3).

A study of EUR individuals suggested that common schizophrenia alleles are under strong background selection<sup>3</sup>. We performed two analyses and found that the natural selection signatures, including positive and background selections, are consistent in schizophrenia-associated loci across EAS and EUR populations. First, we compared the signatures in the top 100 associated loci in EAS to those in EUR. Among the selection signatures we calculated (Methods), none showed a significant difference across populations (Supplementary Fig. 4a,  $P > 0.05$  for all panels, two-sided  $t$  test). We next asked whether the population differentiation drives schizophrenia variants to have different effects in different populations. Using 295 autosomal variants that are genome-wide significant in EAS, EUR or EAS-EUR combined samples, we did not observe a correlation ( $R^2 = 0.003$ , Supplementary Fig. 4b) between the population differentiation (measured by  $F_{st}$ ) and the heterogeneity of effect size (measured by  $\log_{10}P$ -value from the heterogeneity test across EAS and EUR).

As a further test, we examined whether the effect size estimates from EUR differ from those from EAS. We performed a heterogeneity test (Cochran's Q) for the most significant variants in the 108 published schizophrenia-associated loci<sup>2</sup>. Among them, 7 variants showed significant heterogeneity after Bonferroni correction (Supplementary Table 4). Postulating that this might in part be driven by the inflation of EUR estimates as a result of the winner's curse, we applied a correction for the winner's curse<sup>39</sup>, after which none of the variants showed evidence for significant heterogeneity, and the  $P$ -values from the heterogeneity test follow a uniform distribution ( $P = 0.10$ , Kolmogorov–Smirnov test, two-tailed).

Lastly, we evaluated the heterogeneity of schizophrenia genetic effects within EAS samples. None of the EAS associations showed significant heterogeneity across EAS samples (Supplementary Table 3). Using their principal components (PC), we further grouped the samples into the Northeast Asian, Southeast Asian and Indonesian subpopulations (Methods). We then performed a heterogeneity test (Cochran's Q) and found no significant heterogeneity among the three subpopulations (Supplementary Fig. 5).

### Schizophrenia genetic associations from the meta-analysis of EAS and EUR

As the genetic effects observed in EAS are largely consistent with those observed in EUR, we performed a meta-analysis including the EUR and EAS samples (stages 1 and 2) using a fixed-effect model with inverse-variance weighting<sup>40</sup>. The EUR + EAS samples in this analysis (56,418 cases and 78,818 controls) included all samples of EUR ancestry (33,640 cases and 43,456 controls) from the previous publication<sup>2</sup> with the exclusion of three samples of EAS ancestry and the deCODE samples (1,513 cases and 66,236 controls), which only had summary statistics for selected variants. The three EAS samples (IMH-1, HNK-1 and JPN-1) excluded from EUR samples were included in our EAS stage 1.

We identified 208 independent (both in EAS and EUR) variants associated with schizophrenia across 176 genetic loci (Fig. 2b and Supplementary Tables 5 and 6), among which 53 loci were novel (not reported in refs. <sup>2,3,7,8</sup>). Of the 108 schizophrenia-associated loci reported in the previous EUR study<sup>2</sup>, 89 remained significant in this study

(Supplementary Table 4). Using simulations with a correction for winner's curse<sup>39</sup>, we found that this is consistent with an expected over-estimation of the effect sizes due to the winner's curse in the previous study, rather than implying the 19 loci no longer significant in this study were false-positives (Supplementary Note). In addition, the deCODE samples (1,513 cases and 66,236 controls) were not included in the present study, causing the power for loci that had low MAF in EAS to drop.

### Population diversity improves fine-mapping

Causal variants in complex genetic disorders are defined as those that mechanistically contribute to the disorders, but this does not imply that the variant in isolation is likely to result in the disorder<sup>41,42</sup>. Due to LD, disease-associated loci from genome-wide association studies usually implicate genomic regions containing many associated variants. A number of approaches allow for the associated variants to be refined to a smaller set of the most plausible (or credible) candidate causal variants<sup>43–46</sup>. Loci implicated in psychiatric disorders usually have small effect sizes and as a result have generally poor performance using such approaches<sup>2,3</sup>.

Diversity in genetic background across populations can be used to improve fine-mapping resolution<sup>47</sup>. Here we demonstrate that resolution can be improved by exploiting differences in the patterns of LD between causal (directly associated) and LD (indirectly) associated variants. Based on the premise that genetic effects are highly consistent across populations, the causal variants will have consistent effects across populations, whereas non-causal variants can have inconsistent effects due to population-specific LD patterns. We therefore expect causal variants to have greater statistical significance and less heterogeneity in trans-ancestry meta-analysis compared to other alleles that are indirectly associated via LD (Supplementary Fig. 6). Using an algorithm based on this expectation (Methods), we fine-mapped 59 schizophrenia associations that reached genome-wide significance in the EUR and stage 1 EAS combined meta-analysis, had  $MAF > 0.01$  in both EAS and EUR, and for which we had  $>95\%$  coverage of common variants ( $MAF > 1\%$ ) with imputation  $INFO > 0.6$  (Supplementary Table 7). The MHC region was excluded from the fine-mapping analysis due to its long range LD. Stage 2 EAS samples were excluded because not all had full genome coverage, which confounds the fine-mapping outcome (Methods).

Results from this EAS-EUR trans-ancestry approach improved upon those using only EUR, with 44 out of 59 loci mapped to a smaller number of candidate causal variants (Supplementary Table 7). For example, a locus on chromosome 1 (238.8-239.4 Mb), which initially contained 7 potentially causal variants based on a published fine-mapping method<sup>43</sup> and EUR samples only, was resolved to a single variant, rs11587347, with 97.6% probability (Fig. 3a). This variant showed strong association in both populations, while the other 6 variants are equally associated in EUR but not in EAS (Fig. 3b,c). Over all associations, the median size of the 95% credible set, defined as the minimum list of variants that were  $>95\%$  likely to contain the causal variant, dropped from 49 to 30, and the number of associations mapped to 5 variants increased from 2 to 7 (Fig. 3d). The number of associations mapped to a single variant with greater than 50% probability increased from 5 to 8, and median size of the genomic regions the associations mapped decreased from 154 kb to 94 kb.

## Transferability of genetics across populations

For genome-wide significant loci that individually explain  $>0.05\%$  of the variance in schizophrenia liability in either ancestry, we compared the variance explained across EAS and EUR. Variance was approximated as  $2f(1-f)\log(OR)^2/(\pi^2/3)$  (ref. 48) (Supplementary Fig. 7). Although these variants most often have comparable odds ratio across populations, their allele frequencies can differ. Variance explained, combining the effect size (OR) and prevalence of the risk allele ( $f$ ), can be regarded as an approximate measure of the importance of a causal variant in a population. In our analysis, most of the trans-ancestry differences in variance explained is explained by allele frequency differences. One of the implications of this observation, as suggested in recent studies<sup>21,49,50</sup>, is that even if the risk alleles and effect sizes are primarily shared across populations, the disease predictive power of individual alleles, and of composite measures of those risk alleles such as PRS, may not be equivalent across populations.

Here we evaluate this empirically. We assessed how much variation in schizophrenia risk can be explained in EAS using both EAS stage 1 and EUR training data. Using a standard clumping approach, we first computed PRS using a leave-one-out meta-analysis approach with EAS summary statistics (Methods), which explained  $\sim 3\%$  of schizophrenia risk using genome-wide variants on the liability scale ( $R^2 = 0.029$  at  $P = 0.5$ ). In contrast, when EUR summary statistics were used to calculate PRS in the EAS samples, a maximum of only  $\sim 2\%$  of schizophrenia risk was explained ( $R^2 = 0.022$  at  $P = 0.1$ ) despite a greater than 3-fold larger EUR effective sample size (Fig. 4 and Supplementary Fig. 8). The variance explained across various  $P$ -value thresholds provides a proxy for the signal-to-noise ratio, which differs by training population—relative to the EUR training data, variants from the EAS training data with more permissive  $P$ -values improve the EAS prediction accuracy. These results indicate that larger EAS studies will be needed to explain similar case/control variance as currently explained in EUR individuals. Further, although individual loci typically have the same direction and similar magnitude across populations, aggregating variants that differentially tag causal loci across populations for genetic risk prediction results in considerable variability in prediction accuracy.

## Discussion

To date, most large-scale psychiatric genetics studies have been based on samples of primarily EUR ancestry<sup>6</sup>. To increase global coverage, we compiled the largest non-European psychiatric genetics cohort to date and leveraged its size and diversity to provide new insights into the genetic architecture of schizophrenia. This study includes all available major genotyped schizophrenia samples of East Asia ancestry, and presents analyses that have not previously been performed with sufficient power in psychiatric genetics. Although the first schizophrenia genetic associations from two much smaller studies of Chinese ancestry<sup>51,52</sup> were not genome-wide significant in the present EAS analysis, several loci from their subsequent better powered studies<sup>7,8</sup> reached genome-wide significance. Consistent with a study using EUR samples<sup>3</sup>, we note that this is consistent with the expected inflation of effect size from small studies rather than suggesting loci in previous studies are false positives.

When a single population is used to identify the disease-associated loci, the discovery is skewed towards disease-associated variants that have greater allele frequency in that population (Supplementary Fig. 9). When multiple populations are used, disease-associated variants are equally represented across the allele frequency spectrum in these populations (Supplementary Fig. 9). This demonstrates that including global samples improves power to find disease associations for which the power varies across populations. In this study, for example, more EUR than EAS samples would be required to detect around half of the new loci, as the MAF is higher in EAS than in EUR in these loci.

For traits like body mass index and autoimmune diseases, we observed heterogeneity across populations in genetic effects<sup>28,53</sup>, which may point to interactions between genetic associations and environment factors and/or other genetic loci. In contrast, for schizophrenia, we did not find significant heterogeneity across EAS and EUR ancestries. Analyses of genetic heritability, genetic correlation, gene-set enrichment and natural selection signatures converge on the conclusion that the schizophrenia biology is substantially shared across EAS and EUR ancestries (with MHC as a potential exception, discussed later). This remarkable genetic correlation ( $r_g = 0.98$ ) demonstrates that schizophrenia risk alleles operate consistently across different ethnic and cultural backgrounds, at least across EAS and EUR ancestries. Given that the main putative environmental risk factors (migration, urbanicity and substance misuse) differ across populations, this finding also suggests any specific genetic liability to schizophrenia acting via these routes is minimal.

We note that a direct comparison of the effect sizes estimated in EAS with those estimated in EUR has reduced accuracy as we do not know the exact schizophrenia causal variants. This is further complicated by inflation in effect size estimates due to the winner's curse, which are of different magnitudes due to the sample size. Increasing the sample size, especially in those of non-European ancestries, will reduce the bias and enable a better isolation of causal variants, leading to a more precise comparison of the genetic effect size across populations.

The major histocompatibility complex (MHC) hosts the strongest schizophrenia association in EUR<sup>54</sup>. In this study, we did not find a significant schizophrenia association in MHC in EAS. An earlier EUR study<sup>55</sup> mapped the MHC associations to a set of variants (in LD) at both distal ends of the extended MHC (lead variant: rs13194504) and the complement component 4 (*C4*). None of these associations was significant in EAS in this study, which is consistent with previous studies of the Chinese ancestry<sup>7,8,51,52</sup>. This, however, does not necessarily suggest population heterogeneity in their pathophysiological effect, as we attribute the disappearance of MHC signals partially to low frequencies. rs13194504 has MAF < 1% in EAS compared with 9% in EUR, and the *C4*-BS allele is extremely uncommon in samples from China and Korea<sup>56,57</sup>. Another reason may be the EUR-specific LD. In EUR, multiple protective alleles that contribute to the MHC associations are all on the same haplotype across about 6 Mb, due to an extremely long and EUR-specific haplotype that generates LD patterns at 5-Mb scale. This may also be the reason that association signals span so many Mb of genome, and the aggregate association signal (at variants that are in partial LD to multiple signals) is stronger than the signals at the individual associations.



Two recent studies using much smaller samples with individuals of Chinese ancestries<sup>7,8</sup> reported variants in MHC significantly associated with schizophrenia (rs115070292 and rs111782145, respectively). The two studies did not replicate each other's findings as the reported risk alleles are in very weak LD ( $r^2 = 0.07$ ) and are not in LD with the EUR MHC associations. rs115070292, from Yu *et al.*<sup>7</sup>, is more frequent in EAS (12%) than in EUR (2%) with  $P = 10^{-9}$  using 4,384 cases and 5,770 controls of Chinese ancestry. This variant was not significantly associated in our study ( $P = 0.44$ ) even though some samples from that earlier study were included in the current study (BJM-1, 1,312 cases and 1,987 controls). The OR estimated from these shared samples marginally differs from that estimated using all EAS samples ( $P = 0.018$ ), and this association showed marginally significant heterogeneity across all EAS samples ( $P = 0.039$ ). Similarly, we did not replicate the association at rs111782145 from Li *et al.*<sup>8</sup> ( $P = 0.47$ ), again despite sample overlap (2,555 cases and 3,952 controls).

The lack of replication across all these studies reflects the complexity of the MHC region and the limited power for the MHC signals in EAS. As demonstrated in previous studies of complex disorders, it is still possible that when sample size increases for the EAS, genome-wide association within the MHC region could emerge. A study designed for the MHC region, such as in ref. <sup>55</sup>, will be necessary to delineate the contribution of MHC to schizophrenia in EAS individuals.

Genetic associations usually implicate a large genomic region and thus it can be challenging to map their molecular functions. We designed a novel algorithm to leverage the population diversity to fine-map schizophrenia associations to precise sets of variants. Using this algorithm, we reduced the number of candidate variants associated with schizophrenia and facilitated the functional interpretation of these associations. Our algorithm only maps the primary association signals in a locus because the power to fine-map signals beyond that, especially in the EAS samples, is still limited at the current sample size for schizophrenia. We also made an assumption that there is only one causal variant driving the primary association signal. In the scenario that there is a haplotypic effect driven by multiple variants in strong LD, our approach will split the posterior probability among these variants. We expect the causal variants to have non-trivial probability so that they will still be reported in the credible set for future studies. Imputation quality plays a key role in fine-mapping as the power to map the causal variant decreases if it is poorly imputed. We restricted our study to genetic associations that have  $MAF > 1\%$  in both EAS and EUR populations to ensure the imputation quality. For these associations, we found no major change in the size of the credible sets when the EUR samples were imputed using the more powerful Haplotype Reference Consortium (HRC) panel<sup>58</sup>. However, the HRC reference panel, with its much larger sample size and better characterization of low frequency and rare variants, could improve fine-mapping resolution for variants with  $MAF \sim 1\%$ <sup>59</sup>.

Finally, this large-scale EAS sample allowed us to empirically evaluate the congruence of the genetic basis of schizophrenia between EAS and EUR. In spite of a cross-population common variant genetic correlation being highly consistent, we found that polygenic risk models trained in one population have reduced performance in the other population due to different allele frequency distributions and LD structures. This highlights the importance of

including all major ancestral groups in genomic studies both as a strategy to improve power to find disease associations and to ensure the findings have maximum relevance for all populations.

## Methods

### Overview of samples

**EAS samples, full-genome**—Genome-wide genotype data was obtained from 16 samples from East Asia (Supplementary Table 1). Two of these samples (TAI-1 and TAI-2) had parent-offspring trios and were processed as case/pseudo-controls. DSM-IV was used for diagnosing all schizophrenia cases in these samples, except for the trios (TAI-1 and TAI-2), for which DIGS was used. All samples were processed according to quality control (QC) procedures reported in ref. <sup>2</sup>, with details reported in following sections. After QC, genotypes were phased and imputed against the 1000 Genomes Project Phase 3 reference panel<sup>6</sup>. Principal component analysis (PCA) was conducted across samples via imputed best guess genotypes to identify and remove overlapping samples across datasets, cryptic related samples and population outliers. Eight PCs that were associated to case-control status were included in univariate logistic regression to control for the population stratification in each sample.

**EAS samples, selected variants**—Summary statistics were obtained for a set of variants from four EAS samples (BJM-2, BJM-3, BJM-4, BIX-5) that had been analyzed in published studies<sup>7,8</sup>. The summary statistics included odds ratio, standard error, reference and tested alleles for variants that have  $P < 10^{-5}$  in either stage 1 or the meta-analysis combining stage 1 and EUR samples. Between 22,156 and 31,626 variants were available after the exclusion of strand ambiguous<sup>60</sup> variants (Supplementary Table 2).

**EUR samples**—Genotypes for EUR schizophrenia patients and controls were obtained from the Psychiatric Genomics Consortium as reported in ref. <sup>2</sup>. All samples of EUR ancestry were included in this study except for the deCODE samples (1,513 cases and 66,236 controls). We also note that three sample collections of EAS ancestry reported in ref. <sup>2</sup> were not included in the EUR samples in our analysis but were included in the EAS samples (IMH-1, HNK-1 and JPN-1). The same procedures used in processing EAS samples were applied to the EUR samples.

**EAS subpopulations**—To investigate the heterogeneity of schizophrenia genetics effects within EAS, we grouped the samples based on their principal components. Other than Indonesians (UWA-1), which fall into their own subpopulation, samples were grouped into Northeast Asian subpopulation if their average PC2 was significantly greater than 0 (BIX-2, BJM-1, XJU-1, JPN-1, KOR-1) and into Southeast Asian subpopulation if their average PC2 was significantly less than 0 (TAI-1, TAI-2, IMH-1, IMH-2, HNK-1, BIX-3). The remaining samples (UMC-1, SIX-1, BIX-1, BIX-4) were not included in subpopulations. The heterogeneity test (Cochran's Q) across subpopulations, calculated pairwise and in three-way, was conducted using the RICOPIILI pipeline<sup>61</sup>.

## Quality control

Quality control procedures were carried out as part of the RICOPILI pipeline<sup>61</sup> (<https://sites.google.com/a/broadinstitute.org/ricopili/home>) with the following steps and parameters: (1) excluding variants with call rate below 95%; (2) excluding subjects with call rate below 98%; (3) excluding monomorphic variants; (4) excluding subjects with inbred coefficient above 0.2 and below -0.2; (5) excluding subjects with mismatch in reported sex and chromosome X computed sex; (6) excluding variants with missing rate differences greater than 2% between cases and controls; (7) subsequent to step 6, excluding variants with call rate below 98%; and (8) excluding variants in violation of Hardy-Weinberg equilibrium ( $P < 10^{-6}$  for controls or  $P < 10^{-10}$  for cases). Numbers of variants or subjects removed in each step are reported in Supplementary Table 2.

## Phasing and imputation

All datasets were phased using SHAPEIT<sup>62</sup> and IMPUTE2<sup>63</sup> using regular steps and parameters. Additional processing for trios (TAI-1 and TAI-2) was carried out such that case/pseudo-controls were identified and imputed. All samples were imputed to the 1000 Genomes Project Phase 3 reference panel<sup>64</sup> (2,504 subjects, including 504 EAS subjects). Imputation procedures resulted in dosage files and best guess genotypes in PLINK<sup>65</sup> binary format. The former was used for subsequent association analysis, and the latter was used in the PCA and PRS analyses.

## Sample overlaps, population outliers and population stratification

We used Eigenstrat<sup>66</sup> to calculate the principal components for all the samples using the best guess genotypes from imputation (Supplementary Fig. 10b). We computed the identity-by-descent matrix to identify intra- and inter- dataset sample overlaps. Samples with  $\pi$ -hat  $> 0.2$  were extracted, followed by Fisher-Yates shuffle on all samples. The number of times with which each sample was related to another sample was tracked, and samples that were related to more than 25 samples were removed. When deciding which samples to retain, trios were preferred, followed by cases, and thereafter a random sample for each related pair was removed, resulting in removal of 704 individuals.

To identify population outliers, k-means clustering was conducted using the first 20 PCs from PCA and covariates representing each of the 13 stage 1 samples. Guided by results of k-means clustering and visual inspection of PCA plots, 46 individuals were identified as outliers and were excluded. Further population-level inspection was carried out by merging the 1000 Genomes Project Phase 1 reference samples with stage 1 samples and conducting PCA (Supplementary Fig. 10a). Using similar approaches reported above, no further samples were excluded as population outliers.

Eight PCs that were associated with case/control status with  $P < 0.2$  were used as covariates for association analysis in each sample (PCs 1, 4, 5, 6, 8, 9, 15, and 19). QQ plots (Supplementary Fig. 1) showed that the population structure has been well controlled.

## Association analysis and meta-analysis

Association analysis was carried out for each sample using PLINK<sup>65</sup> and genotype dosage from imputation. Only variants having imputation INFO  $\geq 0.6$  and MAF  $\geq 1\%$  were included in the analysis. We performed logistic regression with PCs identified in the prior subsection as covariates to control for population stratification within each study. Fixed-effect meta-analysis<sup>67</sup>, weighted by inverse-variance, was then used to combine association results across samples. Meta-analysis for European samples were conducted in the same matter. In order to find independent schizophrenia associations in both EUR and EAS populations (Supplementary Table 5), we performed LD clumping twice using the 1000 Genomes Project Phase 3 EUR and EAS reference panels, respectively (with default parameters in RICOPILI).

## Chromosome X analysis

Chromosome X genotypes were processed separately from autosomal variants. Quality control was conducted separately for males and females, using similar quality control parameters as above. Cases and pseudo-controls were built out of the trios. Phasing and imputation were then performed on males and females separately for each sample, followed by logistic regression with the same PCs, and meta-analysis combining samples (same parameters as the autosomal analyses). Results were generated for EAS stage 1 samples and EUR-EAS combined samples (excluding BIX-1, BIX-2 and BIX-3). EAS stage 2, BIX-1, BIX-2 and BIX-3 samples do not have chromosome X data and were therefore not analyzed.

## Genetic correlation and heritability

Schizophrenia heritabilities in the observed scale for samples of EUR and EAS ancestry were estimated from their summary statistics using LDSC<sup>23</sup>. We converted the heritabilities in the observed scale to liability scale assuming the schizophrenia population prevalence at 1%. The LD scores were pre-computed from the 1000 Genomes Project Phase 3 reference panel in EUR and EAS respectively (<https://github.com/bulik/ldsc>). Only autosomal variants having MAF greater than 5% in their respective population were included in the analysis, and variants in the MHC region were not included due to the long-range LD.

We computed the genetic correlations between schizophrenia and other traits within EUR and across EUR and EAS. EUR and EAS (stage 1 only) summary statistics for autosomal variants from this study were used as schizophrenia genetic association inputs for their respective populations. Traits tested included schizophrenia<sup>2</sup>, bipolar<sup>68</sup>, major depression<sup>69</sup>, anorexia nervosa<sup>70</sup>, neuroticism & subjective well-being (SWB)<sup>71</sup>, autism spectrum disorder (PGC 2015 release, available at <http://www.med.unc.edu/pgc>), attention deficit hyperactivity disorder (with samples of non-European ancestry removed, available at <http://www.med.unc.edu/pgc>)<sup>72</sup>, education attainment<sup>73</sup>, general intelligence<sup>74</sup>, fluid intelligence score and prospective memory result (using individuals from UK Biobank; <http://www.nealelab.is/uk-biobank>). Only variants having MAF greater than 5% were available and included. Variants in the MHC region were excluded from the analysis. Genetic correlations within EUR were computed using LDSC with LD scores pre-computed on the 1000 Genomes Project Phase 3 reference panel (503 EUR subjects). Genetic correlations across EUR and EAS were computed using POPCORN<sup>29</sup>. POPCORN uses a Bayesian

approach which assumes that genotypes are drawn separately from each population and effect sizes follow the infinitesimal model. The inflation of  $z$  scores could then be modelled and a weighted likelihood function which was maximized to find heritability and genetic correlation. Genetic correlations in POPCORN were computed in the “genetic effect” mode, which estimates the correlation based on the LD covariance scores and effect sizes from summary statistics.

### Partitioned heritability

Partitioned LDSC<sup>34</sup> was conducted to look for heritability enrichment in diverse annotations using EAS (stage 1) and EUR autosomal variants (summary statistics), respectively. LD scores for each annotation were computed using a combination of PLINK<sup>65</sup> and LDSC<sup>23</sup> using the 1000 Genomes Project EAS and EUR subjects, respectively. We used baseline annotations<sup>34</sup> and additional annotations including chromatin accessibility in brain dorso-lateral prefrontal cortex through the Assay for Transposase-Accessible Chromatin using sequencing peaks (ATAC Bryois)<sup>35</sup>, conserved regions located in “ATAC Bryois” (ATAC Bryois & Conserved LindbladToh)<sup>35</sup>, and introgressed regions from Neanderthal (Neanderthal Vernot)<sup>75</sup>. Variants can be included in multiple annotations. Multi-allelic variants were removed.

### Gene-set analysis

We performed gene and gene-set based tests using MAGMA<sup>37</sup>. Genome-wide summary statistics for autosomal variants from EAS, EUR and EAS+EUR meta-analyses were used in this analysis. Variant-to-gene annotation was performed using RefSeq NCBI37.3 with a window of 5 kb upstream and 1.5 kb downstream. LD was taken from 1000 Genomes Project EAS, EUR and EUR-EAS panels, respectively. The gene-based  $P$ -values were computed using  $F$ -test and multivariate linear model, and competitive tests were used for gene-set analysis. Seventy gene-sets were selected and tested in this study (Supplementary Table 8), including those from the Molecular Signatures Database<sup>76</sup>, related to psychiatric diseases<sup>38,77,78</sup> and from ‘gwaspipeline’ (<https://github.com/freeseek/gwaspipeline/blob/master/makegenes.sh>). Gene-sets were ranked for EUR, EAS and EAS+EUR analyses, respectively. The top-ranking gene-sets were compared across analyses to identify common schizophrenia pathways. Additionally, Wilcoxon sign rank tests was conducted to compare the ranking of gene-sets between the EUR and EAS datasets.

### Natural selection analysis

We used the CHB and CEU panels from the 1000 Genomes Project Phase 3 to investigate the natural selection signatures in schizophrenia-associated loci for EAS and EUR populations, respectively. We used the following selection signatures, with their sensitivity to timeframes discussed in ref<sup>3</sup>. *Integrated Haplotype Score (iHS)*: iHS captures the haplotype homozygosity at a given variant. We calculated iHS using the R rehh package<sup>79</sup>. Genetic distance between variants was determined using HapMap phase II genetic map. Ancestral and derived alleles were obtained from the 1000 Genome project, which inferred the ancestral state using six primates on the EPO (Enredo-Pecan-Ortheus) pipeline. Only biallelic variants that have MAF  $\geq 5\%$  were included in the analysis. *Cross Population Extended Haplotype Homozygosity (XPEHH)*<sup>80</sup>: XPEHH detects variants under selection in

one population but not the other. We used CEU as the reference panel when calculating XPEHH for CHB and vice versa. *Fixation index (Fst)*: Fst measures the population differentiation due to genetic structure. We estimated Fst using the Weir and Cockerham approach<sup>81</sup>, which is robust to sample size effects. *Absolute derived allele frequency difference (|DAF|)*: |DAF| measures population differentiation between CHB and CEU populations. *Composite of Multiple signals (CMS)*<sup>82–85</sup>: CMS combines iHS, XPEHH, Fst and |DAF|. As a result, CMS potentially has better power to detect the selection signature. For each variant,  $CMS = \prod_{i=1}^n p_i$ , in which  $p_i$  is the rank of the variant using method  $i$ , sorted by increasing  $P$ -values, divided by the total number of variants. *B statistic*: B statistic measures the background selection. We calculated the B statistic as in ref.<sup>84</sup>.

### Trans-ethnicity fine-mapping

For a disease-associated genetic locus, fine-mapping defines a “credible set” of variants that contains the causal variant with certain probability (e.g., 99% or 95%). Bayesian fine-mapping approaches<sup>2,43,86,87</sup> have been widely used for studies of a single ancestry. Here, we extended a Bayesian fine-mapping approach<sup>85</sup> (Defining credible sets, Methods) to studies of more than one ancestry. Intuitively, the extension was achieved through a prior calculated from the heterogeneity across ancestries, such that variants that have different odds ratio across populations will have a smaller prior probability to be the causal variant.

As in several previous studies<sup>2,86</sup>, we restricted our fine-mapping analysis to the primary association signal in each locus. This is done by taking  $P$  variants that are in LD with the lead variant (the variant having the most significant  $P$ -value) with  $r^2 > 0.1$  in EUR or EAS. Assume  $D$  represents the data including the genotype matrix  $X$  for the  $P$  variants and disease  $Y$  for  $N$  individuals, and  $\beta$  represents a collection of model parameters. We define the model, denoted by  $A$ , as the causal status for the  $P$  variants in locus:  $A \equiv \{a_j\}$ , in which  $a_j$  is the causal status for variant  $j$ .  $a_j = 1$  if the variant  $j$  is causal, and  $a_j = 0$  if it is not. For the primary association signal and under the presumption that the causal variant is the same across all ancestries, one and only one of the  $P$  variants is causal:  $\sum_j a_j = 1$ . For convenience, we define  $A_j$  as the model in which only variant  $j$  is causal, and  $A_0$  as the model in which no variant is causal (null model). The probability of model  $A_j$  (where variant  $j$  is the only causal variant in the locus) given the data ( $D$ ) can be calculated using Bayes’s rule:

$$\Pr(A_j|D) = \Pr(D|A_j) \frac{\Pr(A_j)}{\Pr(D)}.$$

With the steepest descent approximation, the assumption of a flat prior on the model parameters ( $\beta$ ), and the assumption of one causal variant per locus (equation 2 in ref.<sup>86</sup>),  $\Pr(A_j|D)$  can be approximated as:

$$\Pr(A_j|D) \approx \Pr(D|A_j, \hat{\beta}_j) N^{-1/2} \frac{\Pr(A_j)}{\Pr(D)}, \quad (1)$$

in which  $N$  is the sample size. We denote  $\chi_j^2$  as the  $\chi^2$  test statistic for variant  $j$ , which can be calculated from the  $P$ -value from the meta-analysis combining EAS and EUR samples. Using equation 3 in ref. <sup>86</sup>, we have:

$$\Pr(D|A_j, \hat{\beta}_j) \approx \exp\left(\frac{\chi_j^2}{2}\right) \Pr(D|A_0, \hat{\beta}_0). \quad (2)$$

$\Pr(A_j)$  is the prior probability that variant  $j$  is causal. We have shown that schizophrenia causal variants have consistent genetic effect across populations. Therefore, we model the prior probability as a function of the heterogeneity measured in  $I^2$ :

$$\Pr(A_j) = 1 - I_j^2. \quad (3)$$

Using equations 2 and 3,  $\Pr(A_j|D)$  in equation 1 can be calculated as

$$\Pr(A_j|D) \approx \exp\left(\frac{\chi_j^2}{2}\right) \left(1 - I_j^2\right)^{N^{-1/2}} \frac{\Pr(D|A_0, \hat{\beta}_0)}{\Pr(D)}$$

We only use stage 1 samples in fine-mapping so the variants have the same sample size (assuming all variants have good imputation quality). Therefore,  $N^{-1/2}$ ,  $\Pr(D)$  and  $\Pr(D|A_0, \hat{\beta}_0)$  can be regarded as constants,

$$\Pr(A_j|D) \propto \exp\left(\frac{\chi_j^2}{2}\right) \left(1 - I_j^2\right).$$

The normalized causal probability for variant  $j$  is then

$$P(A_j) = \Pr(A_j|D) / \sum_k \Pr(A_k|D)$$

And the 95% credible set of variants is defined as the smallest set of variants,  $S$ , such that

$$\sum_{A_j \in S} P(A_j) \geq 95\% .$$

### Polygenic risk score analysis

We constructed PRS using a pruning and thresholding approach in a study set of EAS individuals with training summary statistics from either EUR or EAS individuals. In the former case, we used summary statistics from all EUR individuals in this study; in the latter case, we used a leave-one-out meta-analysis approach across the 13 stage 1 samples to build PRS.

For the EUR training data, we extracted EUR individuals (FIN, GBR, CEU, IBS, TSI) from 1000 Genomes Project<sup>64</sup> Phase 3 as an LD reference panel to greedily clump variants. For the EAS LD reference panel, we created two panels: (1) an analogous EAS panel (CDX, CHB, CHS, JPT, KHV) from 1000 Genome Project<sup>64</sup> Phase 3 (Fig. 4 and Supplementary Fig. 7c,d), and (2) an LD panel from best guess genotypes from each cohort in the study (Supplementary Fig. 7a,b,e,f). For both EAS and EUR prediction sets, we filtered to variants with a MAF greater than 1% in each respective population and removed indels and strand ambiguous variants. We subset each list of variants to those in the summary statistics with an imputation INFO > 0.9. We then selected approximately independent loci at varying  $P$ -value thresholds or top-ranking  $n$  variants using an LD threshold of  $r^2 = 0.1$  in a window of 500 kilobase pairs in PLINK<sup>65</sup> with the --clump flag. We treated the MHC with additional caution to minimize overfitting in this region, selecting only the most significant variant from the HLA region. To profile variants, we multiplied the log odds ratio for selected variants by genotypes and summed these values across the genome in PLINK<sup>65</sup> using the --score flag for each of the 13 EAS stage 1 samples. We assessed case/control variance explained by computing Nagelkerke's and a liability-scale pseudo- $R^2$  as in Lee *et al.*<sup>88</sup> by comparing a full model with the PRS and 10 principal components with a model excluding the PRS. Results of PRS were presented in two ways the first we selected SNP based on GWAS  $P$ -value thresholds ( $P_T$ ) (i.e. 5e-8, 1e-6, 1e-4, 0.001, 0.001, 0.05, 0.1, 0.2, 0.5, 1) and  $P$ -value ranks. In the latter, top ranked SNPs that exist between both EUR and EAS summary statistics were selected based on the SNP rank thresholds (i.e. top 100, 1,500, 5,000, 15,000, 25,000, 35,000, 50,000, all).

## Supplementary Material

Refer to Web version on PubMed Central for supplementary material.

## Authors

Max Lam<sup>#1,2,3</sup>, Chia-Yen Chen<sup>#4,5,6,7</sup>, Zhiqiang Li<sup>8,9</sup>, Alicia R. Martin<sup>4,5,6</sup>, Julien Bryois<sup>10</sup>, Xixian Ma<sup>11</sup>, Helena Gaspar<sup>12</sup>, Masashi Ikeda<sup>13</sup>, Beben Benyamin<sup>14,15,16</sup>, Brielin C. Brown<sup>17,18</sup>, Ruize Liu<sup>4,6</sup>, Wei Zhou<sup>9,19</sup>, Lili Guan<sup>20,21</sup>, Yoichiro Kamatani<sup>22,23</sup>, Sung-Wan Kim<sup>24</sup>, Michiaki Kubo<sup>25</sup>, Agung Kusumawardhani<sup>26</sup>, Chih-Min Liu<sup>27,28</sup>, Hong Ma<sup>20,21</sup>, Sathish Periyasamy<sup>29,30</sup>, Atsushi Takahashi<sup>23,31</sup>, Zhida Xu<sup>32</sup>, Hao Yu<sup>20,21</sup>, Feng Zhu<sup>33,34,35</sup>, Schizophrenia Working Group of the Psychiatric Genomics Consortium<sup>36</sup>, Indonesia Schizophrenia Consortium<sup>36</sup>, Genetic REsearch on schizophreNiA neTwork-China and Netherland (GREAT-CN)<sup>36</sup>, Wei J. Chen<sup>27,28,37</sup>, Stephen Faraone<sup>38</sup>, Stephen J. Glatt<sup>39</sup>, Lin He<sup>9,40,41</sup>, Steven E. Hyman<sup>6,42</sup>, Hai-Gwo Hwu<sup>27,28,37</sup>, Steven A. McCarroll<sup>6,43</sup>, Benjamin M. Neale<sup>4,5,6</sup>, Pamela Sklar<sup>44</sup>, Dieter B. Wildenauer<sup>45</sup>, Xin Yu<sup>20,21</sup>, Dai Zhang<sup>20,21</sup>, Bryan J. Mowry<sup>29,30</sup>, Jimmy Lee<sup>46</sup>, Peter Holmans<sup>47</sup>, Shuhua Xu<sup>11,48,49,50</sup>, Patrick F. Sullivan<sup>51</sup>, Stephan Ripke<sup>4,6,52</sup>, Michael C. O'Donovan<sup>47</sup>, Mark J. Daly<sup>4,5,6,53</sup>, Shengying Qin<sup>9,54,66</sup>, Pak Sham<sup>55,66</sup>, Nakao Iwata<sup>13,66</sup>, Kyung S. Hong<sup>56,66</sup>, Sibylle G. Schwab<sup>57,66</sup>, Weihua Yue<sup>19,20,58,66,\*</sup>, Ming Tsuang<sup>59,66,\*</sup>, Jianjun Liu<sup>2,60,66,\*</sup>, Xiangang Ma<sup>34,35,61,66,\*</sup>, René S. Kahn<sup>62,63,66,\*</sup>, Yongyong Shi<sup>8,9,64,66,\*</sup>, Hailiang Huang<sup>4,5,6,66,\*</sup>



## Affiliations

<sup>1</sup>Bio-X Institutes, Shanghai Jiao Tong University, Shanghai, China & Research Division, Institute of Mental Health, Singapore, Singapore <sup>2</sup>Human Genetics, Genome Institute of Singapore, Singapore, Singapore <sup>3</sup>Division of Psychiatry Research, The Zucker Hillside Hospital, Northwell Health, Glen Oaks, NY, USA <sup>4</sup>Analytic and Translational Genetics Unit, Massachusetts General Hospital, Boston, MA, USA <sup>5</sup>Department of Medicine, Harvard Medical School, Boston, MA, USA <sup>6</sup>Stanley Center for Psychiatric Research, Broad Institute of Harvard and MIT, Cambridge, MA, USA <sup>7</sup>Psychiatric & Neurodevelopmental Genetics Unit, Massachusetts General Hospital, Boston, MA, USA <sup>8</sup>The Biomedical Sciences Institute of Qingdao University, Qingdao Branch of SJTU Bio-X Institutes & the Affiliated Hospital of Qingdao University, Qingdao, China <sup>9</sup>Bio-X Institute, Key Laboratory for the Genetics of Developmental and Neuropsychiatric Disorders (Ministry of Education) and the Collaborative Innovation Center for Brain Science, Shanghai Jiao Tong University, Shanghai, China <sup>10</sup>Department of Medical Epidemiology and Biostatistics (MEB), C8, Karolinska Institutet, Stockholm, Sweden <sup>11</sup>Key Laboratory of Computational Biology, CAS-MPG Partner Institute for Computational Biology, Shanghai Institute of Nutrition and Health, Shanghai Institutes for Biological Sciences, University of Chinese Academy of Sciences, Chinese Academy of Sciences, Shanghai, China <sup>12</sup>Social Genetic & Developmental Psychiatry, King's College, London, London, UK <sup>13</sup>Department of Psychiatry, Fujita Health University School of Medicine, Toyoake, Aichi, Japan <sup>14</sup>Australian Centre for Precision Health, School of Health Sciences, University of South Australia Cancer Research Institute, Adelaide, South Australia, Australia <sup>15</sup>Institute for Molecular Bioscience, The University of Queensland, Brisbane, Queensland, Australia <sup>16</sup>South Australian Health and Medical Research Institute, Adelaide, South Australia, Australia <sup>17</sup>Data Science Institute, Columbia University, New York, NY, USA <sup>18</sup>New York Genome Center, New York, NY, USA <sup>19</sup>Shanghai Key Laboratory of Psychotic Disorders, Shanghai Mental Health Center, Shanghai Jiao Tong University School of Medicine, Shanghai, China <sup>20</sup>Peking University Sixth Hospital & Institute of Mental Health, Beijing, China <sup>21</sup>National Health Commission Key Laboratory of Mental Health & National Clinical Research Center for Mental Disorders (Peking University Sixth Hospital), Beijing, China <sup>22</sup>Laboratory of Complex Trait Genomics, Graduate School of Frontier Sciences, the University of Tokyo, Minato-ku, Tokyo, Japan <sup>23</sup>Laboratory for Statistical Analysis, RIKEN Center for Integrative Medical Sciences, Yokohama, Kanagawa, Japan <sup>24</sup>Department of Psychiatry, Chonnam National University Medical School, Gwangju, South Korea <sup>25</sup>RIKEN Center for Integrative Medical Sciences, Yokohama, Kanagawa, Japan <sup>26</sup>Psychiatry Department, University of Indonesia - Cipto Mangunkusumo National General Hospital, Jakarta Pusat, DKI Jakarta, Indonesia <sup>27</sup>Department of Psychiatry, National Taiwan University Hospital, Taipei, Taiwan <sup>28</sup>Department of Psychiatry, National Taiwan University College of Medicine, Taipei, Taiwan <sup>29</sup>Queensland Brain Institute, The University of Queensland, Brisbane, Queensland, Australia <sup>30</sup>Queensland Center for Mental Health Research, The University of Queensland, Wacol, Queensland,

Australia <sup>31</sup>Department of Genomic Medicine, Research Institute, National Cerebral and Cardiovascular Center, Suita, Osaka, Japan <sup>32</sup>Department of Psychiatry, University Medical Center Utrecht, Utrecht, Utrecht, Netherlands <sup>33</sup>Center for Translational Medicine, The First Affiliated Hospital of Xi'an Jiaotong University, Xi'an, Shaanxi, China <sup>34</sup>Department of Psychiatry, The First Affiliated Hospital of Xi'an Jiaotong University, Xi'an, Shaanxi, China <sup>35</sup>Center for Brain Science, The First Affiliated Hospital of Xi'an Jiaotong University, Xi'an, Shaanxi, China <sup>37</sup>Institute of Epidemiology and Preventive Medicine, College of Public Health, National Taiwan University, Taipei, Taiwan <sup>38</sup>The State University of New York, Syracuse, NY, USA <sup>39</sup>Psychiatric Genetic Epidemiology & Neurobiology Laboratory (PsychGENe Lab), Department of Psychiatry and Behavioral Sciences, SUNY Upstate Medical University, Syracuse, NY, USA <sup>40</sup>Shanghai Center for Women and Children's Health, Shanghai, China <sup>41</sup>Baoan Maternal and Child Health Hospital, Jinan University, Shenzhen, China <sup>42</sup>Department of Stem Cell and Regenerative Biology, Harvard University, Cambridge, MA, USA <sup>43</sup>Department of Genetics, Harvard Medical School, Boston, MA, USA <sup>44</sup>Genetics and Genomic Sciences, Icahn School of Medicine at Mount Sinai, New York, NY, USA <sup>45</sup>University of Western Australia, Perth, Western Australia, Australia <sup>46</sup>Institute of Mental Health, Singapore, Singapore <sup>47</sup>MRC Centre for Neuropsychiatric Genetics and Genomics, Division of Psychological Medicine and Clinical Neurosciences, School of Medicine, Cardiff University, Cardiff, UK <sup>48</sup>School of Life Science and Technology, ShanghaiTech University, Shanghai, China <sup>49</sup>Center for Excellence in Animal Evolution and Genetics, Chinese Academy of Sciences, Kunming, China <sup>50</sup>Collaborative Innovation Center of Genetics and Development, Shanghai, China <sup>51</sup>Genetics, The University of North Carolina at Chapel Hill, Chapel Hill, NC, USA <sup>52</sup>Department of Psychiatry and Psychotherapy, Charité - Universitätsmedizin, Berlin, Germany <sup>53</sup>Institute for Molecular Medicine, Finland (FIMM), Helsinki, Finland <sup>54</sup>Collaborative Innovation Center, Jining Medical University, Jining, Shandong, China <sup>55</sup>State Key Laboratory of Brain and Cognitive Sciences, Centre for Genomic Sciences and Department of Psychiatry, Li Ka Shing Faculty of Medicine, The University of Hong Kong, Hongkong, HK China <sup>56</sup>Department of Psychiatry, Sungkyunkwan University School of Medicine, Samsung Medical Center, Seoul, Korea <sup>57</sup>Molecular Horizons and School of Chemistry & Molecular Bioscience, University of Wollongong, and Illawarra Health & Medical Research Institute, Wollongong, New South Wales, Australia <sup>58</sup>IDG/McGovern Institute for Brain Research at Peking University, Beijing, China <sup>59</sup>Center for Behavioral Genomics, Department of Psychiatry, University of California, San Diego, La Jolla, CA, USA <sup>60</sup>Department of Medicine, Yong Loo Lin School of Medicine, National University of Singapore, Singapore <sup>61</sup>Clinical Research Center for Mental Disease of Shaanxi Province, The First Affiliated Hospital of Xi'an Jiaotong University, Xi'an, Shaanxi, China <sup>62</sup>Department of Psychiatry and Behavioral Health System, Icahn School of Medicine at Mount Sinai, New York, NY, USA <sup>63</sup>Department of Psychiatry, Brain Center Rudolf Magnus, UMC Utrecht, Utrecht, Netherlands <sup>64</sup>Department of Psychiatry, the First Teaching Hospital of Xinjiang Medical University, Urumqi, Xinjiang, China

## Acknowledgements

We thank Kenneth Kendler, John McGrath, James Walters, Douglas Levinson, and Michael Owen for helpful discussions. We thank Swapnil Awathi, Vassily Trubetsky, and Georgia Panagiotaropoulou for their support with the RICOPILI analysis pipeline. We thank SURFsara and Digital China Health for computing infrastructure for this study. M.L. acknowledges National Medical Research Council Research Training Fellowship award (Grant No.: MH095:003/008-1014); A.R.M. acknowledges funding from K99MH117229; B.B. acknowledges funding support from the National Health and Medical Research Council (NHMRC Funding No. 1084417 and 1079583); L.G. acknowledges National Key Research and Development Program of the Ministry of Science and Technology of China (2016YFC1306802); M.I., Y.K. and N.I. acknowledge Strategic Research Program for Brain Sciences (SRPBS: Grant Numbers JP19dm0107097) and GRIFIN of P3GM (Grant Numbers JP19km0405201 and JP19km0405208) from the Japan Agency for Medical Research and Development (AMED); Y.K., M.K. and A.T. acknowledge the BioBank Japan Project from the Ministry of Education, Culture, Sports, and Technology (MEXT) of Japan; S-W.K. acknowledges Grant of the Korean Mental Health Technology R&D Project (HM15C1140); W.J.C. acknowledges Ministry of Education, Taiwan ('Aim for the Top University Project' to National Taiwan University, 2011-2017); Ministry of Science and Technology, Taiwan (MOST 103-2325-B-002-025); National Health Research Institutes, Taiwan (NHRI-EX104-10432PI); NIH/NHGRI grant U54HG003067; NIMH grant R01 MH085521; and NIMH grant R01 MH085560; S.J.G. acknowledges R01MH08552; B.J.M. acknowledges Australian NHMRC grant 496698. H-G.H. acknowledges Ministry of Education, Taiwan ('Aim for the Top University Project' to National Taiwan University, 2011-2017); MOST, Taiwan (MOST103-2325-B-002-025); NIH/NHGRI grant U54HG003067; NIMH grants R01 MH085521, R01 MH085560; and NHRI, Taiwan (NHRI-EX104-10432PI); P.Sk. acknowledges U01MH109536; B.J.M. acknowledges Australian NHMRC grant 496698; J.L. acknowledges National Medical Research Council Translational and Clinical Research Flagship Programme (Grant No.: NMRC/TCR/003/2008) and National Medical Research Council under the Centre Grant Programme (Grant No.: NMRC/CG/004/2013); P.H. acknowledges funding support from the Medical Research Council MR/L010305/1; S.X. acknowledges funding support from the Strategic Priority Research Program (XDB13040100) and Key Research Program of Frontier Sciences (QYZDJ-SSW-SYS009) of the Chinese Academy of Sciences (CAS), the National Natural Science Foundation of China (NSFC) grant (91731303, 31525014, and 31771388), the UK Royal Society-Newton Advanced Fellowship (NAF\R1\191094), the Program of Shanghai Academic Research Leader (16XD1404700), the National Key Research and Development Program (2016YFC0906403), and the Shanghai Municipal Science and Technology Major Project (2017SHZDZX01); P.F.S. acknowledges the PGC funding from U01 MH109528 and U01 MH1095320; M.J.D. acknowledges NIH/NIMH 5U01MH109539-02; M.C.O'D acknowledges funding from MRC (UK) G0800509 and NIMH ref 1U01MH109514-01; S.Q. acknowledges National Key Research and Development Program of China (2016YFC0905000, 2016YFC0905002); and Shanghai Key Laboratory of Psychotic Disorders (13dz2260500); K.S.H. acknowledges Grant of the National Research Foundation of Korea (2015R1A2A2A01002699), funded by the Ministry of Science, ICT and Future Planning; D.B.W. and S.G.S. acknowledge funding support from the National Health and Medical Research Council (NHMRC 513861); W.Y. acknowledges National Key R&D Program of China (2016YFC1307000); National Natural Science Foundation of China (81571313); Peking University Clinical Scientist Program supported by "the Fundamental Research Funds for the Central Universities" (BMU2019LCKXJ012); M.T. acknowledges R01MH085560: Expanding Rapid Ascertainment Networks of Schizophrenia Families in Taiwan; J.J.L. acknowledges funding support from Agency for Science, Technology and Research (A\*STAR), Singapore; X.C.M. acknowledges the National NSFC Surface project (81471374; PI: X.C. Ma); Y.S. acknowledges National Key R&D Program of China (2016YFC0903402); NSFC (31325014, 81130022, 81421061); and the 973 Program (2015CB559100). H.H. acknowledges support from NIH K01DK114379, NIH R21AI139012, Zhengxu & Ying He Foundation and Stanley Center for Psychiatric Research.

## References

1. Stilo SA, Murray RM. The epidemiology of schizophrenia: replacing dogma with knowledge. *Dialogues Clin Neurosci.* 2010; 12:305–315. [PubMed: 20954427]
2. Schizophrenia Working Group of the Psychiatric Genomics Consortium. Biological insights from 108 schizophrenia-associated genetic loci. *Nature.* 2014; 511:421–427. [PubMed: 25056061]
3. Pardiñas AF, et al. Common schizophrenia alleles are enriched in mutation-intolerant genes and in regions under strong background selection. *Nat Genet.* 2018; 50:381–389. [PubMed: 29483656]
4. Visscher PM, et al. 10 years of GWAS discovery: biology, function, and translation. *Am J Hum Genet.* 2017; 101:5–22. [PubMed: 28686856]
5. Li YR, Keating BJ. Trans-ethnic genome-wide association studies: advantages and challenges of mapping in diverse populations. *Genome Med.* 2014; 6:91. [PubMed: 25473427]
6. Popejoy AB, Fullerton SM. Genomics is failing on diversity. *Nature.* 2016; 538:161–164. [PubMed: 27734877]

7. Yu H, et al. Common variants on 2p16.1, 6p22.1 and 10q24.32 are associated with schizophrenia in Han Chinese population. *Mol Psychiatry*. 2017; 22:954–960. [PubMed: 27922604]
8. Li Z, et al. Genome-wide association analysis identifies 30 new susceptibility loci for schizophrenia. *Nat Genet*. 2017; 49:1576–1583. [PubMed: 28991256]
9. Moltke I, et al. A common Greenlandic TBC1D4 variant confers muscle insulin resistance and type 2 diabetes. *Nature*. 2014; 512:190–193. [PubMed: 25043022]
10. Tang CS, et al. Exome-wide association analysis reveals novel coding sequence variants associated with lipid traits in Chinese. *Nat Commun*. 2015; 6
11. Clarke T-K, et al. Genome-wide association study of alcohol consumption and genetic overlap with other health-related traits in UK Biobank (N=112 117). *Mol Psychiatry*. 2017; 22:1376–1384. [PubMed: 28937693]
12. CONVERGE consortium. Sparse whole-genome sequencing identifies two loci for major depressive disorder. *Nature*. 2015; 523:588–591. [PubMed: 26176920]
13. Wray NR, et al. Genome-wide association analyses identify 44 risk variants and refine the genetic architecture of major depression. *Nat Genet*. 2018; 50:668–681. [PubMed: 29700475]
14. World Health Organization. Report of the International Pilot Study of Schizophrenia. :1973.
15. Carpenter WT Jr, Strauss JS, Bartko JJ. Flexible system for the diagnosis of schizophrenia: report from the WHO International Pilot Study of Schizophrenia. *Science*. 1973; 182:1275–1278. [PubMed: 4752222]
16. Jablensky A, et al. Schizophrenia: manifestations, incidence and course in different cultures. A World Health Organization ten-country study. *Psychol Med Monogr Suppl*. 1992; 20:1–97. [PubMed: 1565705]
17. McGrath JJ. Variations in the incidence of schizophrenia: data versus dogma. *Schizophr Bull*. 2006; 32:195–197. [PubMed: 16135560]
18. Haro JM, et al. Cross-national clinical and functional remission rates: Worldwide Schizophrenia Outpatient Health Outcomes (W-SOHO) study. *Br J Psychiatry*. 2011; 199:194–201. [PubMed: 21881098]
19. Gureje O, Cohen A. Differential outcome of schizophrenia: where we are and where we would like to be. *Br J Psychiatry*. 2011; 199:173–175. [PubMed: 21881093]
20. Scutari M, Mackay I, Balding D. Using genetic distance to infer the accuracy of genomic prediction. *PLoS Genet*. 2016; 12:e1006288. [PubMed: 27589268]
21. Martin AR, et al. Human demographic history impacts genetic risk prediction across diverse populations. *Am J Hum Genet*. 2017; 100:635–649. [PubMed: 28366442]
22. Martin AR, et al. Hidden ‘risk’ in polygenic scores: clinical use today could exacerbate health disparities. *Nat Genet*. 2019; 51:584–591. [PubMed: 30926966]
23. Bulik-Sullivan B, et al. LD Score regression distinguishes confounding from polygenicity in genome-wide association studies. *Nat Genet*. 2015; 47:291–295. [PubMed: 25642630]
24. Geisler S, Schöpf CL, Obermair GJ. Emerging evidence for specific neuronal functions of auxiliary calcium channel  $\alpha_2\delta$  subunits. *Gen Physiol Biophys*. 2015; 34:105–118. [PubMed: 25504062]
25. Heyes S, et al. Genetic disruption of voltage-gated calcium channels in psychiatric and neurological disorders. *Prog Neurobiol*. 2015; 134:36–54. [PubMed: 26386135]
26. Cross-Disorder Group of the Psychiatric Genomics Consortium. Identification of risk loci with shared effects on five major psychiatric disorders: a genome-wide analysis. *Lancet*. 2013; 381:1371–1379. [PubMed: 23453885]
27. Gulsuner S, et al. Spatial and temporal mapping of de novo mutations in schizophrenia to a fetal prefrontal cortical network. *Cell*. 2013; 154:518–529. [PubMed: 23911319]
28. Liu JZ, et al. Association analyses identify 38 susceptibility loci for inflammatory bowel disease and highlight shared genetic risk across populations. *Nat Genet*. 2015; 47:979–986. [PubMed: 26192919]
29. Brown BC, Asian Genetic Epidemiology Network Type 2 Diabetes Consortium. Ye CJ, Price AL, Zaitlen N. Transethnic genetic-correlation estimates from summary statistics. *Am J Hum Genet*. 2016; 99:76–88. [PubMed: 27321947]

30. Okbay A, et al. Genome-wide association study identifies 74 loci associated with educational attainment. *Nature*. 2016; 533:539–542. [PubMed: 27225129]
31. Davies G, et al. Genome-wide association study of cognitive functions and educational attainment in UK Biobank (N= 112 151). *Mol Psychiatry*. 2016; 21:758–67. [PubMed: 27046643]
32. Cross-Disorder Group of the Psychiatric Genomics Consortium. et al. Genetic relationship between five psychiatric disorders estimated from genome-wide SNPs. *Nat Genet*. 2013; 45:984–994. [PubMed: 23933821]
33. Anttila V, et al. Analysis of shared heritability in common disorders of the brain. *Science*. 2018; 360
34. Finucane HK, et al. Partitioning heritability by functional annotation using genome-wide association summary statistics. *Nat Genet*. 2015; 47:1228–1235. [PubMed: 26414678]
35. Bryois J, et al. Evaluation of chromatin accessibility in prefrontal cortex of individuals with schizophrenia. *Nat Commun*. 2018; 9
36. Lindblad-Toh K, et al. A high-resolution map of human evolutionary constraint using 29 mammals. *Nature*. 2011; 478:476–482. [PubMed: 21993624]
37. de Leeuw CA, Mooij JM, Heskes T, Posthuma D. MAGMA: generalized gene-set analysis of GWAS data. *PLoS Comput Biol*. 2015; 11:e1004219. [PubMed: 25885710]
38. Genovese G, et al. Increased burden of ultra-rare protein-altering variants among 4,877 individuals with schizophrenia. *Nat Neurosci*. 2016; 19:1433–1441. [PubMed: 27694994]
39. Bowden J, Dudbridge F. Unbiased estimation of odds ratios: combining genomewide association scans with replication studies. *Genet Epidemiol*. 2009; 33:406–418. [PubMed: 19140132]
40. Borenstein, Michael; Hedges, Larry V, Higgins, Julian PT, Rothstein, Hannah R. *Introduction to Meta-Analysis*. John Wiley & Sons, Ltd; 2009.
41. Spain SL, Barrett JC. Strategies for fine-mapping complex traits. *Hum Mol Genet*. 2015; 24:R111–R119. [PubMed: 26157023]
42. Schaid DJ, Chen W, Larson NB. From genome-wide associations to candidate causal variants by statistical fine-mapping. *Nat Rev Genet*. 2018; 19:491–504. [PubMed: 29844615]
43. Huang H, et al. Fine-mapping inflammatory bowel disease loci to single-variant resolution. *Nature*. 2017; 547:173–178. [PubMed: 28658209]
44. Farh KK-H, et al. Genetic and epigenetic fine mapping of causal autoimmune disease variants. *Nature*. 2015; 518:337–343. [PubMed: 25363779]
45. Swaminathan B, et al. Fine mapping and functional analysis of the multiple sclerosis risk gene CD6. *PLoS One*. 2013; 8:e62376. [PubMed: 23638056]
46. Gaulton KJ, et al. Genetic fine mapping and genomic annotation defines causal mechanisms at type 2 diabetes susceptibility loci. *Nat Genet*. 2015; 47:1415–1425. [PubMed: 26551672]
47. Kichaev G, Pasaniuc B. Leveraging functional-annotation data in trans-ethnic fine-mapping studies. *Am J Hum Genet*. 2015; 97:260–271. [PubMed: 26189819]
48. Pawitan Y, Seng KC, Magnusson PKE. How many genetic variants remain to be discovered? *PLoS One*. 2009; 4:e7969. [PubMed: 19956539]
49. Márquez-Luna C, Loh P-R, South Asian Type 2 Diabetes (SAT2D) Consortium, SIGMA Type 2 Diabetes Consortium. Price AL. Multiethnic polygenic risk scores improve risk prediction in diverse populations. *Genet Epidemiol*. 2017; 41:811–823. [PubMed: 29110330]
50. Chen C-Y, Han J, Hunter DJ, Kraft P, Price AL. Explicit modeling of ancestry improves polygenic risk scores and BLUP prediction. *Genet Epidemiol*. 2015; 39:427–438. [PubMed: 25995153]
51. Yue W-H, et al. Genome-wide association study identifies a susceptibility locus for schizophrenia in Han Chinese at 11p11.2. *Nat Genet*. 2011; 43:1228–1231. [PubMed: 22037552]
52. Shi Y, et al. Common variants on 8p12 and 1q24.2 confer risk of schizophrenia. *Nat Genet*. 2011; 43:1224–1227. [PubMed: 22037555]
53. Salinas YD, Wang L, DeWan AT. Multiethnic genome-wide association study identifies ethnic-specific associations with body mass index in Hispanics and African Americans. *BMC Genet*. 2016; 17:78. [PubMed: 27296613]
54. International Schizophrenia Consortium. et al. Common polygenic variation contributes to risk of schizophrenia and bipolar disorder. *Nature*. 2009; 460:748–752. [PubMed: 19571811]

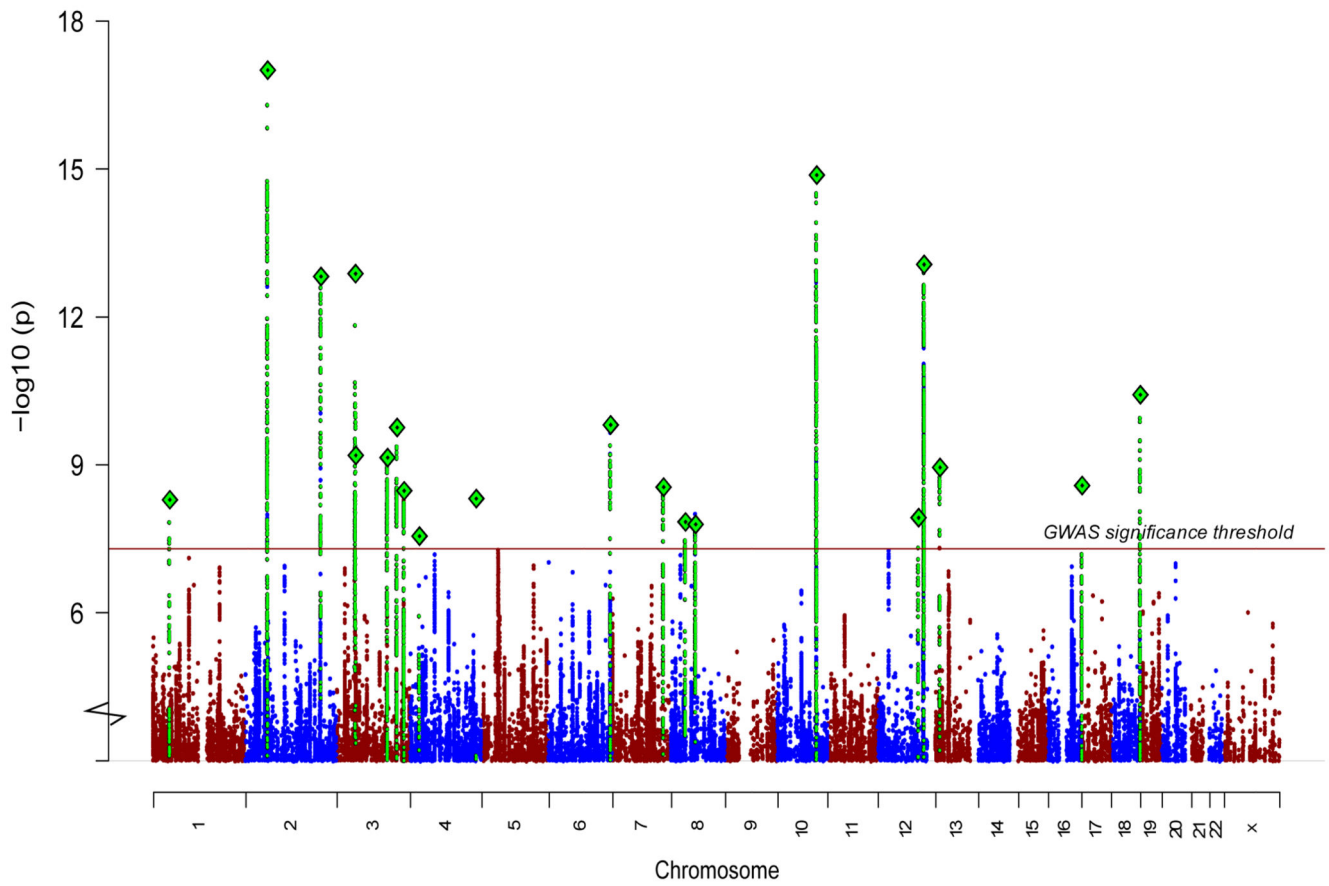
55. Sekar A, et al. Schizophrenia risk from complex variation of complement component 4. *Nature*. 2016; 530:177–183. [PubMed: 26814963]
56. Chen JY, et al. Effects of complement C4 gene copy number variations, size dichotomy, and C4A deficiency on genetic risk and clinical presentation of systemic lupus erythematosus in East Asian populations. *Arthritis Rheumatol*. 2016; 68:1442–1453. [PubMed: 26814708]
57. Hong GH, et al. Association of complement C4 and HLA-DR alleles with systemic lupus erythematosus in Koreans. *J Rheumatol*. 1994; 21:442–447. [PubMed: 7911834]
58. Das S, et al. Next-generation genotype imputation service and methods. *Nat Genet*. 2016; 48:1284–1287. [PubMed: 27571263]
59. Mahajan A, et al. Fine-mapping type 2 diabetes loci to single-variant resolution using high-density imputation and islet-specific epigenome maps. *Nat Genet*. 2018; 50:1505–1513. [PubMed: 30297969]
60. Sand PG. A lesson not learned: allele misassignment. *Behav Brain Funct*. 2007; 3:65. [PubMed: 18154681]
61. Lam M, et al. RICOPILI: Rapid Imputation for Consortias PipeLine. *bioRxiv*.
62. O'Connell J, et al. A general approach for haplotype phasing across the full spectrum of relatedness. *PLoS Genet*. 2014; 10:e1004234. [PubMed: 24743097]
63. Howie B, Fuchsberger C, Stephens M, Marchini J, Abecasis GR. Fast and accurate genotype imputation in genome-wide association studies through pre-phasing. *Nat Genet*. 2012; 44:955–959. [PubMed: 22820512]
64. 1000 Genomes Project Consortium, et al. A global reference for human genetic variation. *Nature*. 2015; 526:68–74. [PubMed: 26432245]
65. Purcell S, et al. PLINK: a tool set for whole-genome association and population-based linkage analyses. *Am J Hum Genet*. 2007; 81:559–575. [PubMed: 17701901]
66. Price AL, et al. Principal components analysis corrects for stratification in genome-wide association studies. *Nat Genet*. 2006; 38:904–909. [PubMed: 16862161]
67. Willer CJ, Li Y, Abecasis GR. METAL: fast and efficient meta-analysis of genomewide association scans. *Bioinformatics*. 2010; 26:2190–2191. [PubMed: 20616382]
68. Psychiatric GWAS Consortium Bipolar Disorder Working Group. Large-scale genome-wide association analysis of bipolar disorder identifies a new susceptibility locus near ODZ4. *Nat Genet*. 2011; 43:977–983. [PubMed: 21926972]
69. Major Depressive Disorder Working Group of the Psychiatric GWAS Consortium, et al. A mega-analysis of genome-wide association studies for major depressive disorder. *Mol Psychiatry*. 2013; 18:497–511. [PubMed: 22472876]
70. Boraska V, et al. A genome-wide association study of anorexia nervosa. *Mol Psychiatry*. 2014; 19:1085–1094. [PubMed: 24514567]
71. Okbay A, et al. Genetic variants associated with subjective well-being, depressive symptoms, and neuroticism identified through genome-wide analyses. *Nat Genet*. 2016; 48:624–633. [PubMed: 27089181]
72. Demontis D, et al. Discovery of the first genome-wide significant risk loci for attention deficit/hyperactivity disorder. *Nat Genet*. 2019; 51:63–75. [PubMed: 30478444]
73. Okbay A, et al. Genome-wide association study identifies 74 loci associated with educational attainment. *Nature*. 2016; 533:539–542. [PubMed: 27225129]
74. Sniekers S, et al. Genome-wide association meta-analysis of 78,308 individuals identifies new loci and genes influencing human intelligence. *Nat Genet*. 2017; 49:1107–1112. [PubMed: 28530673]
75. Juric I, Aeschbacher S, Coop G. The strength of selection against Neanderthal introgression. *PLoS Genet*. 2016; 12:e1006340. [PubMed: 27824859]
76. Liberzon A, et al. Molecular signatures database (MSigDB) 3.0. *Bioinformatics*. 2011; 27:1739–1740. [PubMed: 21546393]
77. Turner TN, et al. denovo-db: a compendium of human de novo variants. *Nucleic Acids Res*. 2017; 45:D804–D811. [PubMed: 27907889]
78. Pirooznia M, et al. High-throughput sequencing of the synaptome in major depressive disorder. *Mol Psychiatry*. 2016; 21:650–655. [PubMed: 26216301]

79. Gautier M, Vitalis R. rehh: an R package to detect footprints of selection in genome-wide SNP data from haplotype structure. *Bioinformatics*. 2012; 28:1176–1177. [PubMed: 22402612]
80. Sabeti PC, et al. Genome-wide detection and characterization of positive selection in human populations. *Nature*. 2007; 449:913–918. [PubMed: 17943131]
81. Weir BS, Cockerham CC. Estimating F-statistics for the analysis of population structure. *Evolution*. 1984; 38:1358–1370. [PubMed: 28563791]
82. Grossman SR, et al. A composite of multiple signals distinguishes causal variants in regions of positive selection. *Science*. 2010; 327:883–886. [PubMed: 20056855]
83. Grossman SR, et al. Identifying recent adaptations in large-scale genomic data. *Cell*. 2013; 152:703–713. [PubMed: 23415221]
84. Ma Y, et al. Properties of different selection signature statistics and a new strategy for combining them. *Heredity*. 2015; 115:426–436. [PubMed: 25990878]
85. McVicker G, Gordon D, Davis C, Green P. Widespread genomic signatures of natural selection in hominid evolution. *PLoS Genet*. 2009; 5:e1000471. [PubMed: 19424416]
86. Gormley P, et al. Meta-analysis of 375,000 individuals identifies 38 susceptibility loci for migraine. *Nat Genet*. 2016; 48:856–866. [PubMed: 27322543]
87. Wellcome Trust Case Control Consortium, et al. Bayesian refinement of association signals for 14 loci in 3 common diseases. *Nat Genet*. 2012; 44:1294–1301. [PubMed: 23104008]
88. Lee SH, Goddard ME, Wray NR, Visscher PM. A better coefficient of determination for genetic profile analysis. *Genet Epidemiol*. 2012; 36:214–224. [PubMed: 22714935]

### Editorial summary

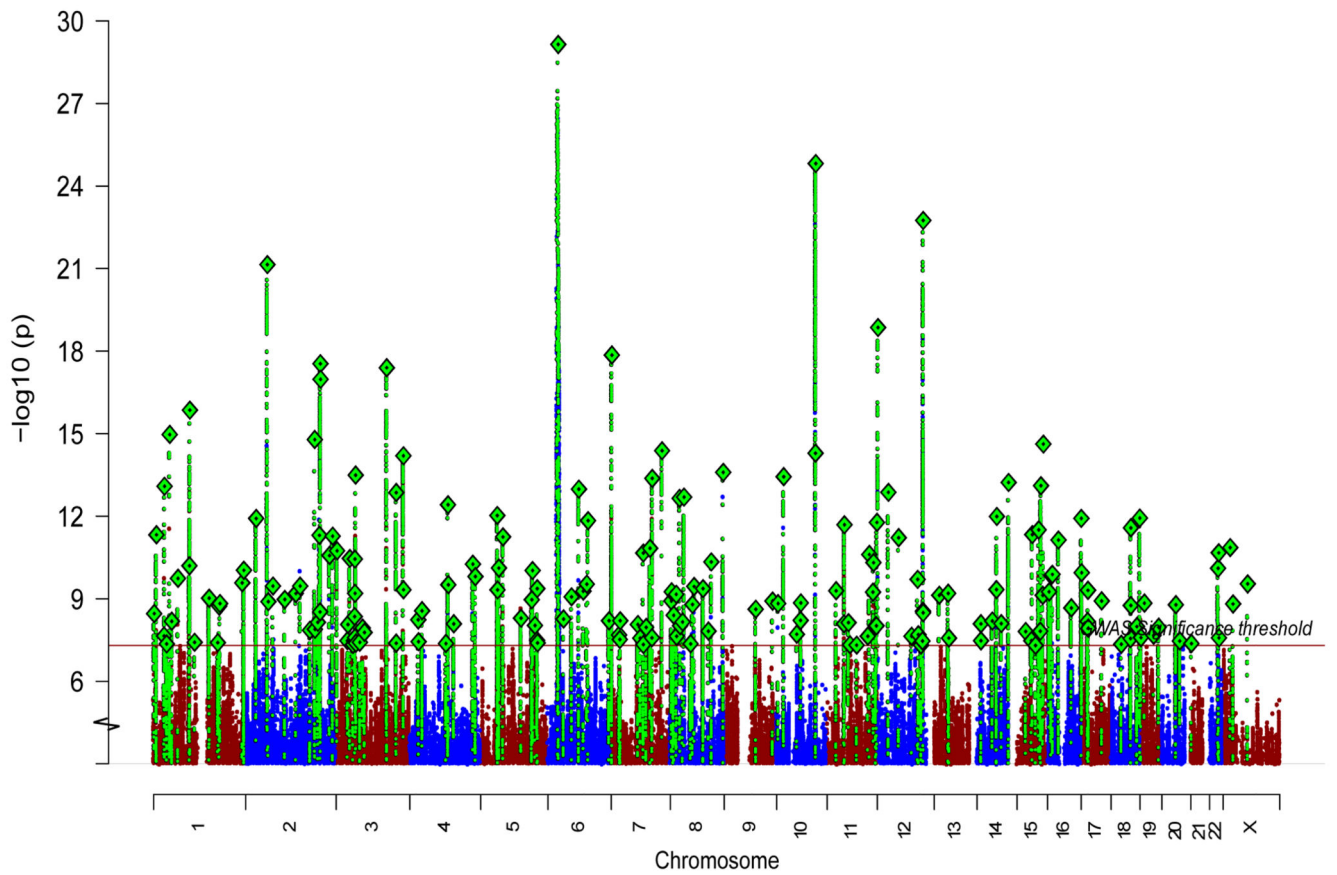
Genome-wide meta-analysis with individuals of East Asian or European ancestry identifies 176 loci associated with schizophrenia. Despite consistent genetic effects across populations, polygenic risk models trained in one population have reduced performance in the other population.





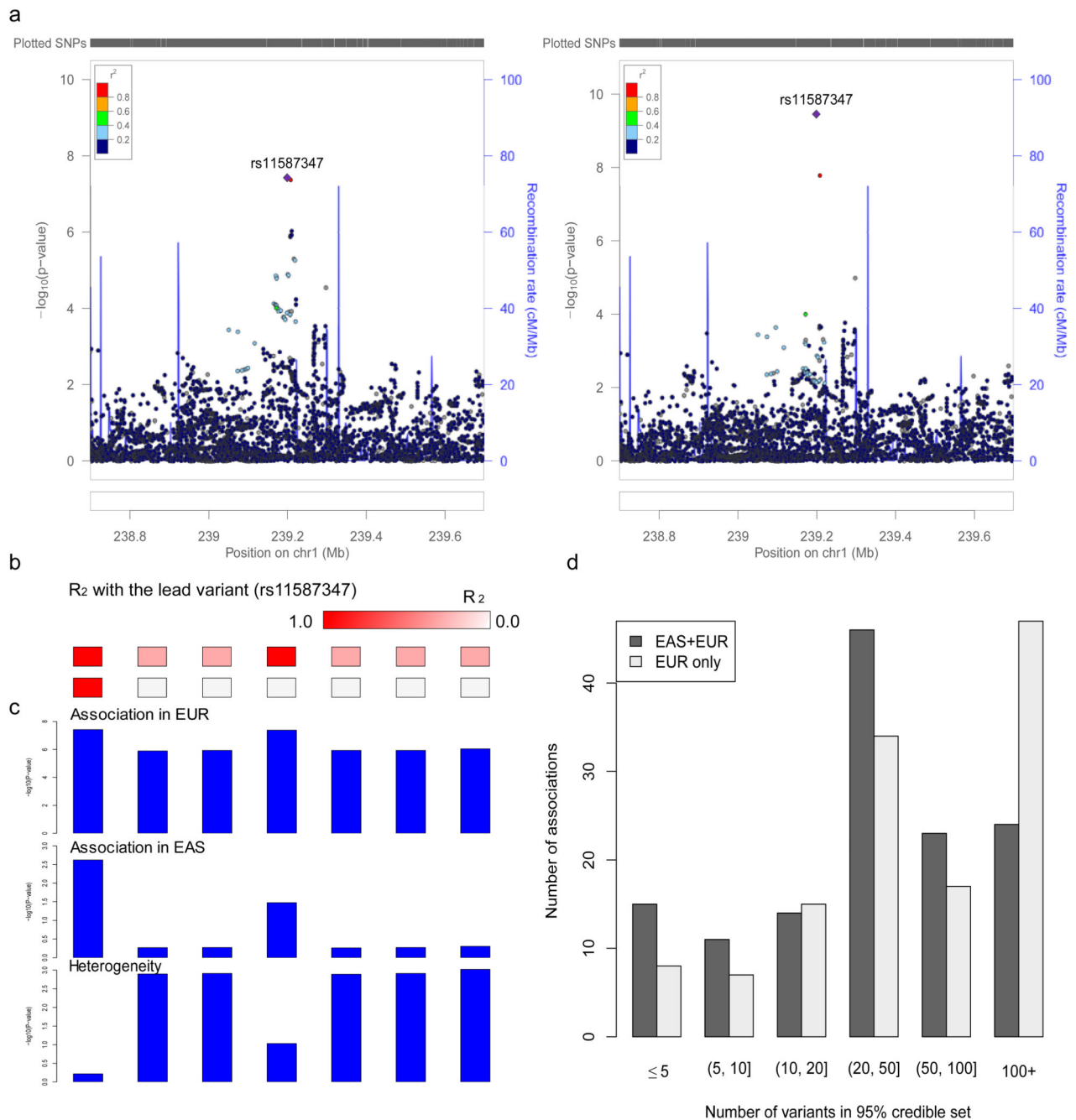
**Figure 1. Genetic associations in East Asian populations.**

Manhattan plot for schizophrenia genetic associations using East Asian samples (stages 1 and 2;  $n = 22,778$  cases; 35,362 controls).



**Figure 2. Schizophrenia associations in EUR and EAS samples.**

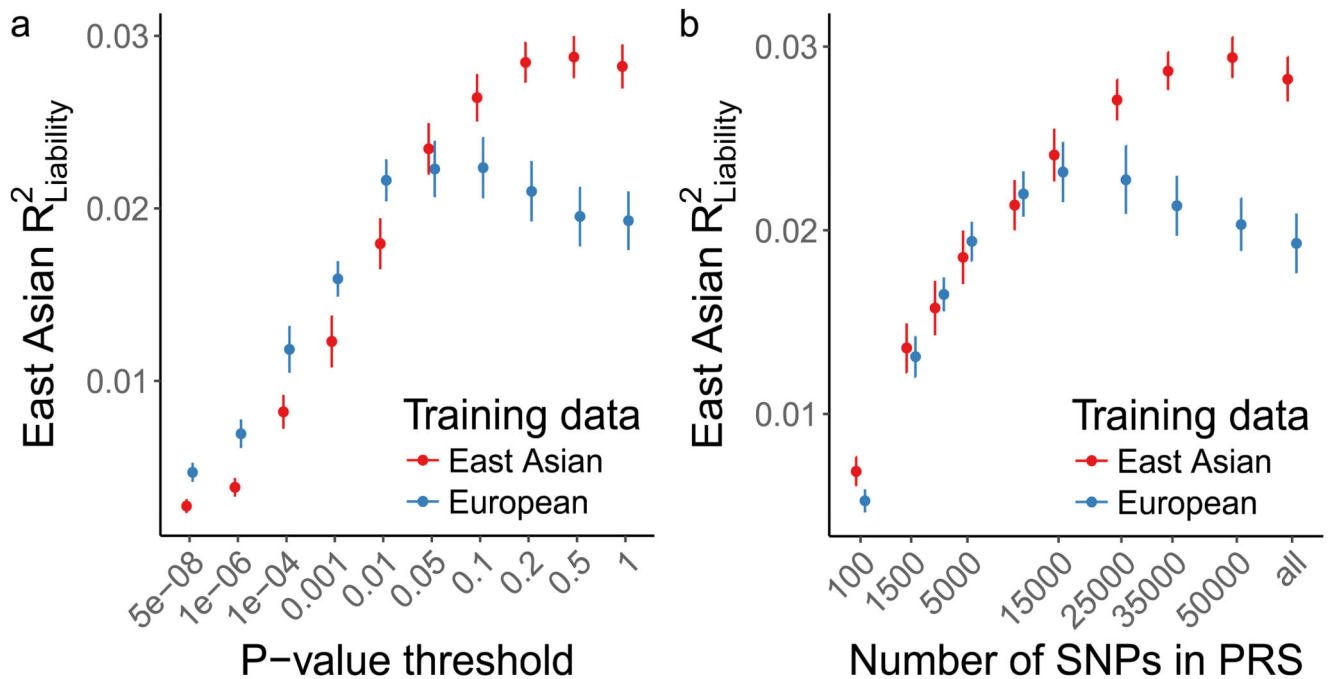
Manhattan plot for the schizophrenia genetic associations from the EAS (stages 1 and 2) + EUR meta-analysis ( $n = 56,418$  cases;  $78,818$  controls).



**Figure 3. Trans-ethnic fine-mapping improves resolution.**

**a**, An association was mapped to a single variant (rs11587347) after adding EAS samples and using the trans-ancestry fine-mapping approach. Regional association plots were generated using <http://locuszoom.org/> and LD from 1000 Genomes Project Phase 3 EUR subjects. **b**, LD with the lead variant (rs11587347). **c**, The lead variant (rs11587347) has strong association significance in both populations and low heterogeneity across populations. **a-c**,  $n$  (EAS stage 1) = 13,305 cases, 35,362 controls;  $n$  (EUR PGC2) = 33,640

cases, 43,456 controls. **d**, Number of variants in the 95% credible set using the trans-ancestry (EAS+EUR) and published fine-mapping approaches (EUR only).



**Figure 4. Genetic risk prediction accuracy in EAS from EAS or EUR training data.**

Polygenic risk scores were computed with GWAS summary statistics from EAS and EUR populations as training sets. EAS risk alleles and weights were computed with a leave-one-out meta-analysis approach across the 13 stage 1 samples. Error bars indicate the 95% confidence interval. LD panel for clumping is from EUR and EAS 1000 Genomes Phase 3 samples. **a**, Case/control variance explained in EAS samples by variants from EAS and EUR training data with a  $P$ -value more significant than the threshold. **b**, Case/control variance explained by the  $n$  most significant independent variants. **a-b**,  $n$  (EAS stage 1) = 13,305 cases, 35,362 controls;  $n$  (EUR PGC2) = 33,640 cases, 43,456 controls.

**Table 1**  
**Genome-wide significant loci in the East Asian populations.**

SNP	Chr	BP	AL	Stage 1		Stage 2		Combined	
				<i>P</i>	OR	<i>P</i>	OR	<i>P</i>	OR
rs4660761	1	44440146	A/G	3.6E-06	0.91	3.53E-04	0.92	5.08E-09	0.91
rs848293	2	58382490	A/G	3.7E-10	0.90	3.10E-09	0.87	9.87E-18	0.89
rs17592552	2	201176071	T/C	8.4E-10	0.86	2.68E-05	0.89	1.50E-13	0.88
rs2073499	3	50374293	A/G	1.1E-09	0.89	2.14E-05	0.91	1.33E-13	0.90
rs76442143	3	51043599	T/C	6.9E-09	1.14	1.03E-02	1.08	6.40E-10	1.12
rs10935182	3	136137422	A/G	1.3E-06	0.90	1.33E-04	0.90	7.08E-10	0.90
rs4856763	3	161831675	A/G	3.9E-06	0.92	8.54E-06	0.91	1.73E-10	0.92
rs13096176	3	180752138	T/C	3.1E-07	0.88	2.21E-03	0.90	3.35E-09	0.89
rs6832165	4	24270210	C/G	3.7E-08	1.12	3.70E-01	1.08	2.79E-08	1.12
rs13142920	4	176728614	A/C	9.5E-05	0.93	5.85E-06	0.89	4.85E-09	0.92
rs4479913	6	165075210	A/G	3.6E-07	1.13	9.98E-05	1.12	1.53E-10	1.12
rs320696	7	137047137	A/C	5.5E-08	0.90	1.07E-02	0.93	2.81E-09	0.91
rs11986274	8	38259481	T/C	5.1E-04	1.07	2.73E-06	1.11	1.44E-08	1.08
rs2612614	8	65310836	A/G	2.2E-08	1.14	4.51E-02	1.06	1.62E-08	1.11
rs4147157	10	104536360	A/G	6.6E-10	0.90	3.87E-07	0.89	1.32E-15	0.89
rs10861879	12	108609634	A/G	4.8E-07	1.09	5.00E-03	1.07	1.18E-08	1.08
rs1984658	12	123483426	A/G	5.1E-11	0.89	2.14E-04	0.92	8.62E-14	0.90
rs9567393	13	32763757	A/G	3.5E-08	1.11	4.37E-03	1.07	1.13E-09	1.09
rs9890128	17	1273646	T/C	3.5E-08	0.90	2.44E-02	0.91	2.61E-09	0.90
rs11665111	18	77622996	T/C	5.2E-06	1.08	6.89E-04	1.09	1.46E-08	1.09
rs55642704	18	77688124	T/C	1.1E-06	1.09	7.11E-06	1.10	3.76E-11	1.09

BP, genomic position in HG19; AL, reference and non-reference alleles; OR, odds ratio; *P*, *P*-value. *n* (EAS stage 1) = 13,305 cases, 35,362 controls; *n* (EAS stage 1+2) = 22,778 cases, 35,362 controls. Fixed effect inverse variance meta-analysis was utilized to generate *P*-values.