



Published in final edited form as:

J Neurosci. 2010 April 21; 30(16): 5481–5488. doi:10.1523/JNEUROSCI.4437-09.2010.

Attentional cueing at the saccade goal, not at the target location, facilitates saccades

Aarlenne Z. Khan^{1,2}, Stephen J. Heinen¹, and Robert M. McPeck^{1,3}

¹ The Smith-Kettlewell Eye Research Institute, 2318 Fillmore St, San Francisco, CA, USA

² Centre for Neuroscience Studies, Queen's University, Botterell Hall, Kingston, Ontario, Canada

³ Department of Biological Sciences, SUNY College of Optometry, New York, NY, USA

Abstract

Presenting a behaviorally irrelevant cue shortly before a target at the same location decreases the latencies of saccades to the target, a phenomenon known as exogenous attention facilitation. It remains unclear whether exogenous attention interacts with early, sensory stages or later, motor planning stages of saccade production. To distinguish between these alternatives, we used a saccadic adaptation paradigm to dissociate the location of the visual target from the saccade goal. 3 male and 4 female human subjects performed both control trials, in which saccades were made to one of two target eccentricities, and adaptation trials, in which the target was shifted from one location to the other during the saccade. This manipulation adapted saccades so that they eventually were directed to the shifted location. In both conditions, a behaviorally irrelevant cue was flashed 66.7 ms before target appearance at a randomly selected one of seven positions that included the two target locations. In control trials, saccade latencies were shortest when the cue was presented at the target location and increased with cue-target distance. In contrast, adapted saccade latencies were shortest when the cue was presented at the adapted saccade goal, and not at the visual target location. The dynamics of adapted saccades were also altered, consistent with prior adaptation studies, except when the cue was flashed at the saccade goal. Overall, the results suggest that attentional cueing facilitates saccade planning rather than visual processing of the target.

Keywords

attentional capture; saccadic adaptation; latency; human; psychophysics; saccade dynamics

Introduction

A sudden visual event, such as a street light turning on, often draws attention. Such exogenous attention shifts are useful in detecting potentially important changes in our surroundings so that we may react appropriately to them. It has been shown that an exogenous attention shift that is elicited by the presentation of a salient visual cue reduces saccadic eye movement latencies to targets presented shortly afterwards at the same location (e.g., Posner and Cohen, 1984; Bell et al., 2004; Fecteau et al., 2004). Although this classic cueing effect has been studied for over 20 years, it remains unclear whether exogenous cueing reduces saccade latencies by facilitating processing of the target, consistent with an influence on earlier visual processing stages (Jonides, 1981), or by facilitating the response to the target (i.e. the execution of the eye

movement to that location), consistent with an influence on later motor processing stages (Fecteau and Munoz, 2005).

It has been difficult to answer this question, since both the visual target and the motor goal are usually presented at the same location (but see Fecteau and Munoz, 2005). One way to dissociate the locations of visual and motor processing is through saccadic adaptation (McLaughlin, 1967; Deubel et al., 1986; Straube et al., 1997; Hopp and Fuchs, 2004), where the amplitude and/or direction of a saccade to a visual target is gradually modified by shifting the target to another location during the saccade (McLaughlin, 1967; Hopp and Fuchs, 2004). For amplitude adaptation, if the shift is approximately 33% of the initial target distance or smaller, it is generally not perceived by human subjects (Bridgeman et al., 1975). The reduction of saccade amplitude by such adaptation trials occurs rapidly: in humans, after approximately 40–60 trials, saccades are adapted and the endpoints of saccades to the same initial target location differ significantly from their pre-adaptation values (Deubel et al., 1986; Frens and van Opstal, 1994). It has been suggested that saccadic adaptation occurs at the motor level, as a change in the saccade command that is issued for a given visual target eccentricity (Frens & van Opstal, 1994; Wallman and Fuchs, 1998) rather than a change in the perceived visual target distance (Deubel, 1991; Bahcall & Kowler, 1999; 2000). This change is presumably produced by the retinal error signal between the target location and the saccade location endpoint present during the adapting period (Wallman and Fuchs, 1998; Bahcall & Kowler, 2000; Noto & Robinson, 2001) as opposed to the amplitude of the corrective saccade (Albano & King, 1989).

To distinguish between sensory and motor hypotheses about the influence of exogenous attention on saccadic latency, amplitude and dynamics, we used saccadic adaptation to dissociate the saccade goal from the location of the visual target. We flashed a behaviorally irrelevant cue at different locations prior to presenting the visual target during saccadic adaptation. We hypothesized that if exogenous attention facilitates sensory processing of the target, then a cue flashed at the upcoming target location should have the greatest influence on the saccade, because it would result in faster detection of the target. On the other hand, if attention facilitates motor production of the saccade, then a cue flashed at the upcoming saccade goal should have the greatest influence since the saccade would be triggered faster by the cue.

We found that saccade latencies, amplitudes and dynamics were influenced the most when a cue was flashed at the upcoming saccade goal location, and not at the visual target location. This observation supports the hypothesis that exogenous attention reduces saccade latencies by facilitating motor planning.

Methods

Subjects

Seven subjects (ages: 25 to 40, 4 female) participated in the experiment. Five subjects were naïve to the goal of the experiment. The experimental protocol was pre-approved by the Smith-Kettlewell Internal Review Board in compliance with the National Commission for the Protection of Human Subjects of Biomedical and Behavioral Research, USA. All subjects had normal or corrected to normal vision.

Apparatus

Subjects were seated in front of a 17-inch high-resolution Nanao color monitor (1.76 min arc/pixel) with a refresh rate of 60 Hz that was controlled by a Macintosh computer. Subjects were seated at a distance of 48 cm from the monitor in a dimly lit room. The edges of the monitor were slightly visible because of the light projected from nearby data acquisition monitors. The

monitor background was black (0.05 cd/m^2). Stimuli were presented using Matlab (The Math Works Inc., Natick MA) and functions from the PsychToolbox (Brainard, 1997; Pelli, 1997). Eye position was recorded at 1000 Hz using a video-based tracker (Eyelink 1000; SR Research, Mississauga, Canada). A chinrest maintained the viewing distance and stabilized the head for accurate eye tracking. Prior to each block of trials, the eye tracker was calibrated by having the subject fixate a series of 9 positions on the display (8 surrounding the periphery of the display and the center) while the gains and offsets were set.

Procedure

Subjects performed one adapted saccade block and 2 control (normal) saccade blocks that consisted of 192 to 384 trials within each block. In the adapted saccade block, the target shifted during the saccade from an eccentricity of 15° to 10° throughout the block (33% of the amplitude of the first target). The five naïve subjects were unaware of any differences between the control and adapted blocks, verbally ascertained during debriefing. We chose to use a decreasing amplitude adaptation paradigm (Hopp & Fuchs, 2004) because, while many studies on saccadic adaptation have reliably shown a decrease or increase in saccade amplitude in one direction (Semmlow et al., 1989; Wallman & Fuchs, 1998), decreasing saccade amplitude appears to be faster, lasts longer and results in a greater amount of adaptation than increasing saccade amplitude (Semmlow et al., 1989; Erkelens and Hulleman, 1993; Fuchs et al., 1996; Panouilleres et al., 2008).

The sequence of each trial in the adapting block was as follows: subjects fixated on a dot (white circle (37.2 cd/m^2), diameter = 0.25°) at 10° left of the center of the screen (Figure 1A – trial sequence). After a variable interval of 600 to 800 (36 to 48 frames, 1 frame = 16.7 ms, a cue (light gray circle (0.6 cd/m^2), diameter = 0.25° , duration = 33.3 ms - 2 frames) was presented randomly at 1 of 7 positions aligned horizontally with the fixation position (5° left of fixation, at fixation [fixation dot dimmed for 33.3 ms (2 frames)], 5° , 10° , 15° , 20° , or 25° right of fixation; see Figure 1B – target & cue positions). The cue was then extinguished and was followed by a 33.3 (2 frame) ms delay, corresponding to a 66.7 ms (4 frame) stimulus onset asynchrony (SOA). The 66.7 ms SOA was determined using pilot experiments to reliably show attentional facilitation for control saccades. Next, a target (white square (37.2 cd/m^2), diameter = 0.25°) was presented 15° to the right of fixation and the fixation dot was extinguished at the same time. Subjects were asked to saccade to the target as soon as they saw it. Eye position was monitored online and as soon as the left eye moved 1.5° away from the fixation dot, the target shifted to a location 10° to the right of initial fixation. The target always shifted to its 2nd position before the end of the first saccade. After the target jump, the target remained illuminated at its 2nd position for 500 ms (30 frames). The next trial began following a 600 (36 frames) ms inter-stimulus interval. In addition, there was an 2nd condition in which no cue was presented but the timing remained the same.

The two control saccade blocks consisted of trial sequences that were identical to the target jump sequence, except that the target did not change positions during the saccade and remained at either the 10° or 15° position for the remainder of the trial. Within each block, target position remained the same. The order in which the 3 blocks were presented to each subject was randomized.

Data Analysis

A total of 5,496 trials were collected, with a total of 2,088 adapted saccade trials, 1,656 - 10° control trials and 1,752 - 15° control trials. The total number of trials per subject ranged from 576 to 1,152. All data were analyzed using Matlab 7.3 (The Math Works Inc., Natick MA). Eye velocity was obtained by digital differentiation of eye position signals and filtered to reduce noise (2 pole Butterworth filter, cutoff = 50 Hz). Saccades were detected using a velocity

threshold of 25°/s. Across all subjects and groups, we removed all trials with saccade latencies of less than 80 ms (Wenban-Smith and Findlay, 1991) or greater than 500 ms (Walker et al., 1995). There were a total of 585 trials removed (10.6%). Next, to remove outliers within each subject and each group (control, adapted), we removed all trials with saccade latencies that did not fall within 3 standard deviations (SD) of the mean within each subject and each group (63 additional trials). Additionally there were a number of outliers in the dynamics data. Therefore, all peak velocities above 700°/s ($M = 435^\circ/\text{s}$, $SD = 81^\circ/\text{s}$), acceleration durations above 50ms ($M = 36\text{ms}$, $SD = 3.17\text{ms}$) and deceleration durations above 70ms ($M = 32\text{ms}$, $SD = 10\text{ms}$) were excluded from the data. This resulted in 4,234 (77%) remaining trials.

To classify saccades in the adaptation blocks as either adapted or un-adapted, we determined *a priori* a specific range of target movement amplitudes. To be considered an adapted saccade, the movement endpoint was required to fall within $\pm 2^\circ$ of the 2nd target position, i.e. 8° to 12° degrees from fixation. This criterion yielded a total of 878 adapted saccades. We used the same or similar criteria for selecting the control saccade trials for each target position, i.e. 8° to 12° for the 10° control target trials ($N = 1241$) and 13° to 17° for the 15° control target trials ($N = 1,020$). In a further analysis, we also selected from the adapted saccade trials a set of saccades with amplitudes that fell within $\pm 2^\circ$ of the 1st target position, i.e. 13° to 17°, which we labeled as *un-adapted* saccades (total un-adapted saccades, $N = 331$). These four groups of saccades were then used in the subsequent analyses. Note that the range of 4° ensures no endpoint overlap between the adapted and un-adapted saccade groups and allows a fair comparison of saccades in the control and adapted trials. The mean amplitudes for all groups are as follows: 10° control = 9.8°, adapted trials = 10.61°, 15° control = 14.6° and un-adapted trials = 13.9°.

In addition, we compared peak velocities and saccade durations between the adapted and the 10° control saccades. To do so, we compared saccades with the same amplitudes across the two groups. For each group at each cue location, we binned the amplitudes into 12 equal bins with widths of 0.25°. We then selected the same number of trials from each bin for both groups; this number was equivalent to the group with the fewer number of trials within that bin. The same number of trials was then randomly selected from the 2nd group. This resulted in equivalent amplitudes ($p > 0.05$) at each cue location across both groups. Subsequent calculations of peak velocities and durations were then made from these selected trials. Acceleration duration was defined as the time from saccade onset to peak velocity, and deceleration duration was defined as the time from peak velocity to the end of the saccade.

Results

Control saccade trials – latencies

Saccade amplitudes for a typical subject as a function of trial number for the 10° control saccade block are shown in Figure 2A. Most saccade endpoints were close to the target at 10°. Note that saccade endpoint is synonymous with saccade amplitude since fixation was set to 0°. The highlighted gray area depicts the $\pm 2^\circ$ range within which lie the endpoints of saccades used in subsequent analyses, i.e. 8° to 12°. Figure 2B shows typical control saccades to the 10° target when the cue was flashed 10° right (at the target's position) or 5° left of fixation, plotted as a function of time. Six randomly chosen trials are shown for each cue position (10° right – indigo traces and 5° left – green traces). Saccade latencies were consistently shorter when the flashed cue appeared at the same location as the subsequent target location. In Figure 2C, mean latencies for the same subject are plotted as a function of all cue locations and both target locations (10° control block – dashed lines and 15° control saccade – dotted line). The data from this subject show that saccade latency varied as a function of the position of the flashed cue, with the shortest latencies occurring when the cue appeared at or near the target location. When the target was presented at 10°, saccade latencies were shortest when the cue was

presented at 10°. For the 15° condition, saccade latencies were shortest when the cue appeared at the 15–25° locations. This was the case even though the flashed cue was behaviorally irrelevant.

Figure 2D summarizes both control saccade conditions across all subjects. Particularly for the 10° target group, saccade latencies were shortest when the cue was flashed at the same location as the target and increased gradually in either direction as the distance between the cue and the target increased. A similar pattern can also be seen for the 15° control target group, which shows the shortest latencies when the cue is presented at 15° or 20°. The more diffuse cueing effect seen in the 15° block may be due to cortical magnification at greater eccentricities (e.g., Rovamo and Virsu, 1979).

Next, we compared adapted saccades to control saccades. The critical aspects of these data are 1) the location of the cue that produces the shortest latencies, and 2) the overall latency curve of the adapted saccades plotted as a function of the cue location. If the cue results in more efficient visual processing of the target, then the shortest latencies should occur when the cue is flashed at the visual target location (and not at the saccade goal), i.e. 15°, and in addition, the latency curve should be similar to that of the 15° control saccade curve. On the other hand, if the cue results in faster saccade planning, then the shortest latencies should occur when the cue is flashed at the saccade goal location (and not at the visual target location), i.e. 10°, and in addition the curve should match that of the 10° control saccade curve.

Adapted saccade trials - latencies

Figure 3A shows a block of adapted saccade trials from a typical subject. Saccade endpoint is plotted as a function of trial number. As can be seen, saccade amplitude/endpoint decreased gradually within the first 50 trials from 15° to above 10° and then remained around there for the remainder of the trials. We separated the adapted saccade trials into the saccade amplitude ranges described in the METHODS section. The pink shaded region depicts the *adapted saccade* group, i.e. saccades with endpoints within $\pm 2^\circ$ of the shifted target position. The gray shaded region depicts the *un-adapted* saccade group, i.e. saccades with endpoints within $\pm 2^\circ$ of the initial target position.

In Figure 3B, we plot mean saccade latency of the *adapted* saccade group for each flashed cue position (red line) for the same subject. For comparison, we have also plotted the control latency data from Figure 2C for the 10° (dashed gray line) and 15° control saccade (dotted gray line) conditions. The adapted saccade latencies appear to follow the latency pattern for the 10° control saccade condition and not that of the 15° control saccade condition. Specifically, the adapted saccade latencies are shortest when the cue is flashed at the goal of the adapted saccade (10°) and not the location of the visual target that triggered the saccadic movement (15°). In addition, the overall adapted latency curve across all cue positions appears to more closely follow the 10° control saccade curve than the 15° curve. If the cue most effectively facilitated processing of the visual target, we would expect that the shortest latencies would be at the 15° cue location and that the adapted latency curve would follow that of the 15° control saccade condition.

Across all cues and all subjects, adapted saccades had an average latency of 156 ms (SD= 37), 10° control saccades had a latency of 164 ms (40), and 15° control saccades had a latency of 170 ms (41). A one-way ANOVA with an accompanying posthoc Student-Newman-Keuls test (SNK) revealed significant differences between the three latencies ($F(2,3136) = 27.248$, $p < 0.001$, S-N-K $p < 0.05$).

To quantify how saccade latency was affected by the cue alone, we normalized the latencies in the cued trials relative to the no cue trials. We did this by calculating the mean latency for

the no cue trials for each subject and then subtracting this value from each of the cued trial latencies. In Figure 3C, we show the normalized latencies for the same subject as in Figure 3B. As can be seen for the control saccade data, the 10° and 15° curves are now slightly shifted relative to one another compared to Figure 3B.

Figure 3D shows the normalized mean latencies across all subjects for the adapted (red line) as well as the 10° and 15° control saccades. Here, the adapted curve appears to follow the curve for the 10° control saccades much better than it does the 15° control saccade curve. In addition, the adapted saccade curve has the shortest latencies at the 10° cue position, and not the 15° cue condition. The normalized latencies also reveal how the cue influences latency at each position relative to the no-cue condition (horizontal dotted line). For example, in the adapted curve, the shortest latencies occur when the cue is flashed at 10°, during which saccade latencies are on average 18 ms shorter than during the no cue condition, whereas they are approximately 21 ms longer when the cue is flashed on the opposite side of fixation (-5°).

We performed univariate ANOVAs on the normalized saccade latencies for each group separately with cue position as a factor finding a significant effect of cue position on each group (10° = $F(6, 1065) = 8.993$, $p < 0.001$, 15° = $F(6, 854) = 11.57$, $p < 0.001$, adapted = $F(6, 763) = 16.21$, $p < 0.001$). Separate post-hoc analyses (S-N-K) revealed that for both the 10° control saccade group as well as the adapted group, latencies for the 10° cue location were significantly different from all other cue locations ($p < 0.05$). In the 15° control saccade group, the latencies for the 15° cue location were significantly different from all other cue locations except 20° ($p < 0.05$).

We compared the overall cueing-effect curves to determine which control saccade curve (10° or 15°) the adapted curve matched the closest. For each individual subject as well as across all subjects, we calculated the magnitude of the difference between the mean adapted saccade latency and the means of each of the two control saccade latencies at each cue location and then averaged these magnitudes across the cue locations. If the cue speeds up processing of the visual target, then the difference magnitude should be smaller between the adapted curve and the 15° control saccade curve. On the other hand, if the cue speeds up production of the saccade, then the difference magnitude should be smaller between the adapted saccade curve and the 10° control saccade curve. In Figure 4, the diagonal dotted line is the line of unity. Data points falling below this line are consistent with the saccade production hypothesis whereas data points falling above the line are consistent with the visual processing hypothesis. The data points for all subjects except one fell below the line of unity, consistent with the saccade production hypothesis.

We also performed a correlational analysis between the mean adapted latencies and the control saccade latencies (7 mean latencies for each of the 7 cue locations). A higher correlation between one control saccade group (15° control vs. 10° control) and the adapted saccade data compared to the other control saccade group would demonstrate that the curves match better. As can be seen in Table 1, saccade latency correlations were consistently higher between the adapted saccade and the 10° control conditions (corresponding to the saccade production hypothesis) than between the adapted saccade and the 15° control condition (corresponding to the visual processing hypothesis) in all but one subject (subject 7). This subject nevertheless had a high correlation between the 10° control and adapted saccade latencies, but the overall pattern of latencies for this subject was similar across all three conditions, making it difficult to dissociate between the visual processing and saccade production hypotheses.

Taken together, the results suggest that the cue that has its greatest influence when flashed at the upcoming saccade goal location and not at the visual target location.

Un-adapted saccades - latencies

One test of the above conclusion is that the influence of the cue should depend on saccade endpoint, e.g. if the endpoint is 15° to the right, then a cue flashed at that location should have the greatest influence, regardless of the visual target location. To test this, we examined the group of *un-adapted* saccades that occurred during the adapted saccade trials. These were saccades in the adaptation block which had endpoints within ± 2 of the initial target location. Across all subjects, there were 333 un-adapted saccades in total, 31% of which occurred during the 2nd half of the adaptation block (see Supplemental Figure 1 for endpoint data for a 2nd subject). Across all cues, *un-adapted* saccades had an average latency of 162 ms (SD= 42). A one-way ANOVA comparing these saccades and the 15° and 10° control saccades was significant ($F(2,2589) = 7.497, p < 0.01$). A posthoc Student-Newman-Keuls (SNK) revealed that the latencies of the un-adapted saccades were not different from the 10° control saccade latencies ($p > 0.05$).

In the same manner as for Figure 3D, we normalized the latencies for the un-adapted saccades. Figure 5 shows the mean normalized latency curves for the *un-adapted* saccades occurring during the adapting paradigm across all subjects (thick red line). The lighter trace of the same color in this figure shows the data from the *adapted* saccade group for comparison. In addition, the 15° and 10° control saccade curves are also plotted. The figure shows that the *unadapted* curve (thick red line) does not follow the same pattern of latencies across cue positions as the *adapted* curve (light red line). Rather, the curve appears to fit better with the 15° saccade curve. This was quantified using correlation analysis as performed above; the correlation between the un-adapted latencies and the 15° control latencies was higher at 0.735 ($p = 0.06, N = 7$) compared to the correlation between the un-adapted latencies and the 10° control latencies at -0.172 ($p = 0.712, N = 7$). Thus, for both *un-adapted* and *adapted* saccades, the cue has the greatest influence on saccade latencies when it appears at the saccade endpoint.

To ensure that these findings are unrelated to the process of saccade adaptation itself, we performed an additional analysis where we separated adaptation trials into 3 epochs - early, middle and late adaptation. We found the same effect of cue on adaptation latencies across all three epochs (see Supplemental Figure 2).

Saccade amplitude and dynamics

Since adaptation is often incomplete, adapted saccades toward lower gains tend to have larger amplitudes than normal saccades for the same final target location (Desmurget et al., 1998; Hopp and Fuchs, 2004; Cotti et al., 2007). In addition, when matched for amplitude, adapted saccades also have longer durations and decreased peak velocities compared to normal saccades (Frens and van Opstal, 1994; Collins et al., 2008). We investigated whether these differences also occurred in our data, and whether the cue at either the saccade goal or visual target had an additional influence on amplitude and dynamics, such as peak velocity and duration, for the *adapted* saccades.

We found that average saccade amplitude in the adapted trials was reduced by 80.4% (from 14.61° [15° control amplitude] to 10.6° [adapted amplitude] = 4.01°) of the required displacement (15° to 10° = 5°) across all cue conditions combined. This is consistent with previous studies (Desmurget et al., 1998; Hopp and Fuchs, 2004; Cotti et al., 2007). However, we found that within the adapted saccade group, saccade amplitudes were significantly smaller when the cue was flashed at the saccade goal ($F(7, 870) = 12.662, P < 0.001, S-N-K, p < 0.05$) but were not significantly larger when the cue was flashed at the visual target location ($p > 0.05$). Within the 10° control saccades, amplitudes were not smaller for the 5° compared to the 15° cue location (SNK > 0.05).

In order to compare saccade dynamics, we equalized amplitudes at each cue location between the adapted and the 10° control saccade groups (see METHODS). We compared average velocity profiles between the adapted (red) and the 10° control saccades (gray) when the cue was flashed at the 15° - visual target (Figure 6A) and at the 10° - saccade goal (Figure 6B) locations. In both figures, the average \pm the standard error of the mean of all velocity profiles aligned at saccade onset is plotted.

Figure 6A shows that within these trials with equalized amplitudes ($p > 0.05$), when the cue was flashed at the visual target location, peak velocity was decreased for the adapted saccades (red traces) compared to the 10° control group ($F(1,128) = 21.392, p < 0.01$). Figure 6B shows that when the cue was flashed at the upcoming saccade goal location, in contrast to the cue being flashed at the visual target location, peak velocity was not significantly different from the control data ($p > 0.05$).

Figure 6C plots peak velocity as a function of cue position for the adapted (red line) and control (gray dashed line) saccades with equivalent amplitudes. Overall peak velocity was significantly different for the adapted saccades compared to the control saccades ($F(1,1132) = 11.731, p < 0.05$). Within the adapted saccades, we compared peak velocity across cue conditions to the no cue condition and found that the 10° and the 25° cue location was significantly different from the no cue condition ($F(7,549) = 3.64, p < 0.001, S-N-K < 0.05$). The 10° cue condition was not different from the no cue condition in the control group ($p < 0.05$). Figure 6D plots the duration of the deceleration period as a function of cue position. Overall the duration of the deceleration period was higher for the adapted saccades compared to the control saccades ($F(1,1132) = 28.455, p < 0.001$). Within the adapted trials, the 10° cue location had the lowest duration but was only significantly different from the 25° cue location ($F(7,549) = 2.983, p < 0.01, S-N-K < 0.05$). There were no significant differences for across any cue condition within the control trials ($p > 0.05$). The duration of the acceleration period was significantly higher for the control trials (36.3 ms) than for the adapted trials (35.5 ms- $F(1,1132) = 27.969, p < 0.05$) but there were no within group cue differences ($p > 0.05$).

To summarize, we replicated previous findings by showing that overall, adapted saccades differ from normal saccades of equivalent amplitude, with reduced peak velocities and longer acceleration and deceleration period durations. However, when the cue was presented at the saccade goal location, peak velocity and deceleration duration did not follow this pattern.

Discussion

We investigated the mechanism underlying saccadic facilitation, the well-known decrease in saccade latency following a behaviorally irrelevant exogenous cue. We asked whether the cue influenced processing of the visual target or planning of the saccade by using saccadic adaptation to dissociate the locations of the visual target and the saccade goal. We found that adapted saccades were most strongly influenced when the cue was flashed at the upcoming saccade goal location and not when the cue was flashed at the visual target location. Therefore, we conclude that the attentional cue had a predominant influence on the late motor programming of the saccade rather than on the early visual processing of the target.

An attentional cue presented at the saccade goal had three main effects on adapted saccades: first, latencies were shorter compared to when the cue was presented elsewhere; second, saccade amplitude was smaller; and finally, the velocity profile was similar to that of control saccades rather than the velocity profile of a typical adapted saccade.

Latency, velocity, and amplitude effects

For control saccades, we found that saccades had shorter latencies when a cue was presented at the same location as the target and longer latencies when the cue-target distance was greater, compared to the condition with no cue present. This is in agreement with earlier studies in which the visual target and saccade goal locations were undifferentiated (Shepherd et al., 1986; Crawford and Muller, 1992; Bell et al., 2004; Fecteau et al., 2004). Critically, when we separated the visual target and saccade goal locations by adapting saccades to a target at 15° eccentricity down to approximately 10° in amplitude, the pattern of cueing effects for the adapted saccades was similar to that which was observed for control saccades to a target at an eccentricity of 10°. In both cases, saccade latencies were shortest when the cue was flashed at 10° and gradually increased for more distant cues. In the 10° control saccade group, the optimal cue location corresponded with both the saccade goal and the target location. However, in the adapted saccade group, this corresponded with the saccade goal location and not the visual target location.

Even within the adaptation block, saccades with endpoints that were closer to 15° showed a pattern of latencies consistent with the 15° control latencies. These results also exclude the possibility that our results arose from an overall difference in performance between the adaptation and control blocks, e.g. an adaptation task set. It could be argued that the saccades with larger amplitudes took place within the first few trials before adaptation occurred. However, approximately 1/3 of these saccades with greater amplitudes occurred within the 2nd half of the adaptation block (see supplemental Figure 1). Therefore, our results support the hypothesis that the cue had the greatest influence when it was presented at the saccade goal rather than at the visual target.

Previous studies have shown that adapted saccades have different dynamics from those of normal saccades (Frens and van Opstal, 1994; Straube and Deubel, 1995; Collins et al., 2008). We reproduced the findings of Collins et al. (2008), who showed that adapted saccades have a longer deceleration period than control saccades with the same amplitude. However, in our task, when the cue was flashed at the saccade goal location, the velocity profiles of adapted saccades became more similar to those of the control saccades. We propose therefore that the cue provided a visual signal that interacted with the saccade goal, i.e. an averaging effect (Edelman & Xu, 2009) resulting in a saccade that had similar dynamics to the non-adapted saccades. This is consistent with the finding that visually-guided saccades have higher velocities than non-visually guided saccades (Smit et al., 1987; Smit and Van Gisbergen, 1989; Gnadt et al., 1991; Van Gelder et al., 1997; Amador et al., 1998; Ohno et al., 2000; Edelman and Goldberg, 2001; Edelman et al., 2006) and could account for the fact that when the cue is presented at the saccade goal location, the amplitudes of adapted saccades are more similar to the controls.

As with any study of exogenous saccade cueing, it could be that both the adapted and control saccade curves show a reduction in saccade latencies when the cue location coincides with the saccade goal location simply because subjects are essentially making a premature saccade to the cue rather than the target. However, the data argue against this possibility. First, the latency reductions are at most 15 ms compared to the overall latencies across the rest of the cue locations, whereas the timing difference between the cue and the target was 50 ms. However, this smaller latency effect could be explained if some saccades were made to the cue and others to the target. Therefore, we examined the latency distributions when the cue was presented at the saccade goal, but did not find any bimodal distributions that would be suggestive of this possibility. Instead, all latency distributions showed a single peak with equivalent widths. In addition, during adaptation, the saccade is triggered by the target which is at 15° location. We would expect that if subjects were making premature saccades to the cue, they would be more likely to do so when the cue was flashed at 15° (close to the target) resulting in shortest latencies

at that cue location. Finally, it has been shown that saccade adaptation to targets presented at one amplitude partially transfers to targets at other nearby amplitudes (Noto et al., 1999; Hopp and Fuchs, 2004). Specifically, Noto et al. (1999) showed (in monkeys) that adaptation to a 15° target, transfers about 60–70% to a 10° target. Taking this into account, if subjects were indeed making a saccade to the 10° cue, they should have shown some adaptation transfer and accordingly made saccades of approximately 8.5°. Instead, their saccades were 9.9° on average when the cue was flashed at the 10°, comparable to saccade amplitudes for the 10° control block.

Possible neural mechanisms

We believe that our results imply a spatial interaction between the visual location of the attentional cue and the saccade goal location. One area where this could occur is the superior colliculus (SC). The SC contains topographic visual and motor maps (e.g., Scudder et al., 2002), and receives inputs from brain regions such as the prefrontal and parietal cortices (Lui et al., 1995; Clower et al., 2001; May, 2006). Recent studies have shown neuronal correlates of attention capture in the SC (Bell et al., 2004; Fecteau et al., 2004). For example, Fecteau et al. (2004) found stronger target-related activity when a cue and target appeared in the same location, because the target-related activity built on the previous cue-related activity. This activity was significantly correlated with saccadic reaction time; stronger target-related activity led to shorter reaction times. Differences in activity at the same location in the SC have been shown to lead to changes in saccade latency, amplitude and velocity profiles (Stanford et al., 1996), which may explain our findings. With respect to our task, we hypothesize that it is the saccade goal location rather than the visual target location that interacts or averages with the cue, suggesting that information about the adapted saccade goal is represented in the SC; with the activity related to the saccade building on the previous cue-related activity resulting in a shorter saccade latency. This is partially supported by physiological evidence, however controversy remains as to whether the SC encodes the saccade goal location as opposed to the target location for adapted saccades (Fitzgibbon et al., 1986; Melis and van Gisbergen, 1996; Frens and van Opstal, 1997; Edelman and Goldberg, 2002; Takeichi et al., 2005; 2007; Edelman and Xu, 2009).

Effects of attention on visual and motor processing

Many previous studies have demonstrated tasks and situations where attentional cueing clearly facilitates early sensory processing stages (Jonides, 1981; Egeth and Yantis, 1997; Snowden, 2002). Our findings do not dispute these studies, rather, they reveal the mechanisms involved in classic attentional cueing tasks with saccades, which have been widely used for many decades (Posner et al. 1982; Abrams and Dobkin, 1994). Within this context, our findings expand on those of Fecteau and Munoz (2005), who show evidence for attentional mechanisms occurring at later motor stages of processing in the SC, by showing that attention influences processing of the saccade goal rather than the visual target.

Supplementary Material

Refer to Web version on PubMed Central for supplementary material.

Acknowledgments

AZK was supported by CIHR (Canada). RMM was supported by NIH EY014885. SJH was supported by NIH EY117720. We are grateful to Gunnar Blohm and Edward Keller for helpful comments and Andrew Pruszyński for technical help.

References

- Abrams RA, Dobkin RS. Inhibition of return: Effects of attentional cueing on eye movement latencies. *J Exp Psychol Hum Percept Perform* 1994;20:467–477. [PubMed: 8027710]
- Albano J, King W. Rapid adaptation of saccadic amplitude in humans and monkeys. *Invest Ophthalmol Vis Sci* 1989;30:1883–1893. [PubMed: 2759803]
- Amador N, Schlag-Rey M, Schlag J. Primate antisaccades. I. Behavioral characteristics. *J Neurophysiol* 1998;80:1775–1786. [PubMed: 9772238]
- Bahcall DO, Kowler E. The control of saccadic adaptation: implications for the scanning of natural scenes. *Vision Res* 2000;40:2779–2796. [PubMed: 10960651]
- Bell AH, Fecteau JH, Munoz DP. Using auditory and visual stimuli to investigate the behavioral and neuronal consequences of reflexive covert orienting. *J Neurophysiol* 2004;91:2172–2184. [PubMed: 14702335]
- Brainard DH. The Psychophysics Toolbox. *Spat Vis* 1997;10(4):433–436. [PubMed: 9176952]
- Bridgeman B, Hendry D, Stark L. Failure to detect displacement of the visual world during saccadic eye movements. *Vision Res* 1975;15(6):719–722. [PubMed: 1138489]
- Clower DM, West RA, Lynch JC, Strick PL. The inferior parietal lobule is the target of output from the superior colliculus, hippocampus, and cerebellum. *J Neurosci* 2001;21(16):6283–6291. [PubMed: 11487651]
- Collins T, Semroud A, Orriols E, Doré-Mazars K. Saccade dynamics before, during, and after saccadic adaptation in humans. *Invest Ophthalmol Vis Sci* 2008;49(2):604–612. [PubMed: 18235005]
- Cotti J, Guillaume A, Alahyane N, Pelisson D, Vercher JL. Adaptation of voluntary saccades, but not of reactive saccades, transfers to hand pointing movements. *J Neurophysiol* 2007;98(2):602–612. [PubMed: 17553949]
- Crawford TJ, Muller HJ. Spatial and temporal effects of spatial attention on human saccadic eye movements. *Vision Res* 1992;32(2):293–304. [PubMed: 1574846]
- Desmurget M, Pélisson D, Urquizar C, Prablanc C, Alexander GE, Grafton ST. Functional anatomy of saccadic adaptation in humans. *Nat Neurosci* 1998;1(6):524–528. [PubMed: 10196552]
- Deubel H. Adaptive control of saccade metrics. In: Obrecht, G.; Stark, L., editors. *Presbyopia Research*. New York: Plenum Press; 1991. p. 93-100.
- Deubel H, Wolf W, Hauske G. Adaptive gain control of saccadic eye movements. *Hum Neurobiol* 1986;5(4):245–253. [PubMed: 3818374]
- Edelman JA, Goldberg ME. Dependence of saccade-related activity in the primate superior colliculus on visual target presence. *J Neurophysiol* 2001;86:676–691. [PubMed: 11495942]
- Edelman JA, Goldberg ME. Effect of short-term saccadic adaptation on saccades evoked by electrical stimulation in the primate superior colliculus. *J Neurophysiol* 2002;87(4):1915–1923. [PubMed: 11929911]
- Edelman JA, Valenzuela N, Barton JJ. Antisaccade velocity, but not latency, results from a lack of saccade visual guidance. *Vision Res* 2006;46(8–9):1411–1421. [PubMed: 16260025]
- Edelman JA, Xu KZ. Inhibition of voluntary saccadic eye movement commands by abrupt visual onsets. *J Neurophysiol* 2009;101:1222–1234. [PubMed: 19019977]
- Egeth HE, Yantis S. Visual attention: control, representation, and time course. *Annu Rev Psychol* 1997;48:269–297. [PubMed: 9046562]
- Egeth HE, Yantis S. Visual attention: control, representation, and time course. *Annu Rev Psychol* 1997;48:269–297. [PubMed: 9046562]
- Erkelens CJ, Hulleman J. Selective adaptation of internally triggered saccades made to visual targets. *Exp Brain Res* 1993;93(1):157–164. [PubMed: 8467885]
- Fecteau JH, Bell AH, Munoz DP. Neural correlates of automatic and goal-driven biases in orienting spatial attention. *J Neurophysiol* 2004;92:1728–1737. [PubMed: 15115792]
- Fecteau JH, Munoz DP. Correlates of capture of attention and inhibition of return across stages of visual processing. *J Cogn Neurosci* 2005;17:1714–1727. [PubMed: 16269108]

- Fitzgibbon, E.J.; Goldberg, M.E.; Segraves, M.A. Short term saccadic adaptation in the monkey. In: Keller, B.L.; Zee, D.S., editors. Adaptive processes in visual and oculomotor systems. Oxford: Pergamon; 1986. p. 329-333.
- Frens MA, van Opstal AJ. Transfer of short-term adaptation in human saccadic eye movements. *Exp Brain Res* 1994;100:293–306. [PubMed: 7813666]
- Frens MA, Van Opstal AJ. Monkey superior colliculus activity during short-term saccadic adaptation. *Brain Res Bull* 1997;43(5):473–483. [PubMed: 9250621]
- Fuchs AF, Reiner D, Pong M. Transfer of gain changes from targeting to other types of saccade in the monkey: constraints on possible sites of saccadic gain adaptation. *J Neurophysiol* 1996;76:2522–2535. [PubMed: 8899624]
- Gnadt JW, Bracewell RM, Andersen RA. Sensorimotor transformation during eye movements to remembered visual targets. *Vision Res* 1991;31:693–715. [PubMed: 1843771]
- Hopp JJ, Fuchs AF. The characteristics and neuronal substrate of saccadic eye movement plasticity. *Prog Neurobiol* 2004;72:27–53. [PubMed: 15019175]
- Jonides, J. Voluntary versus automatic control over the mind's eye's movement. In: Long, J.B.; Baddeley, A.D., editors. Attention and performance IX. Hillsdale: Erlbaum; 1981. p. 187-203.
- Lui F, Gregory KM, Blanks RH, Giolli RA. Projections from visual areas of the cerebral cortex to pretectal nuclear complex, terminal accessory optic nuclei, and superior colliculus in macaque monkey. *J Comp Neurol* 1995;363(3):439–460. [PubMed: 8847410]
- May PJ. The mammalian superior colliculus: laminar structure and connections. *Prog Brain Res* 2006;151:321–378. [PubMed: 16221594]
- McLaughlin SC. Parametric adjustment in saccadic eye movements. *Percept Psychophys* 1967;2:359–362.
- Melis BJ, van Gisbergen JA. Short-term adaptation of electrically induced saccades in monkey superior colliculus. *J Neurophysiol* 1996;76(3):1744–1758. [PubMed: 8890289]
- Noto CT, Watanabe S, Fuchs AF. Characteristics of simian adaptation fields produced by behavioral changes in saccade size and direction. *J Neurophysiol* 1999;81:2798–2813. [PubMed: 10368398]
- Noto CT, Robinson F. Visual error is the stimulus for saccadic gain adaptation. *Cogn Brain Res* 2001;12:301–305.
- Ohno K, Matsuzaki H, Yamada T, Yoshida H, Shimizu K. The difference in saccadic parameters among several visually guided tasks. *Jpn J Ophthalmol* 2000;44:695. [PubMed: 11094204]
- Panouillères M, Weiss T, Urquizar C, Salemm R, Munoz DP, Pélisson D. Behavioral evidence of separate adaptation mechanisms controlling saccade amplitude lengthening and shortening. *J Neurophysiol* 2009;101(3):1550–1559. [PubMed: 19091922]
- Pelli DG. The VideoToolbox software for visual psychophysics: transforming numbers into movies. *Spat Vis* 1997;10(4):437–442. [PubMed: 9176953]
- Posner, M.I.; Cohen, Y. Components of visual attention. In: Bouma, H.; Bouwhuis, D.G., editors. Attention & Performance X. Hillsdale: Erlbaum; 1984. p. 531-556.
- Posner MI, Cohen Y, Rafal RD. Neural systems control of spatial orienting. *Philos Trans R Soc Lond B Biol Sci* 1982;298(1089):187–198. [PubMed: 6125970]
- Rovamo J, Virsu V. An estimation and application of the human cortical magnification factor. *Exp Brain Res* 1979;37(3):495–510. [PubMed: 520439]
- Semmlow JL, Gauthier GM, Vercher JL. Mechanisms of short-term saccadic adaptation. *J Exp Psychol Hum Percept Perform* 1989;15:249–258. [PubMed: 2525598]
- Scudder CA, Kaneko CS, Fuchs AF. The brainstem burst generator for saccadic eye movements: a modern synthesis. *Exp Brain Res* 2002;142(4):439–462. [PubMed: 11845241]
- Shepherd M, Findlay JM, Hockey RJ. The relationship between eye movements and spatial attention. *Q J Exp Psychol A* 1986;38(3):475–491. [PubMed: 3763952]
- Smit AC, Van Gisbergen JA. A short-latency transition in saccade dynamics during square-wave tracking and its significance for the differentiation of visually-guided and predictive saccades. *Exp Brain Res* 1989;76(1):64–74. [PubMed: 2753110]
- Smit AC, Van Gisbergen JA, Cools AR. A parametric analysis of human saccades in different experimental paradigms. *Vision Res* 1987;27:1745–1762. [PubMed: 3445465]

- Snowden RJ. Visual attention to color: parvocellular guidance of attentional resources? *Psychol Sci* 2002;13(2):180–184. [PubMed: 11934005]
- Straube A, Deubel H. Rapid gain adaptation affects the dynamics of saccadic eye movements in humans. *Vision Res* 1995;35(23–24):3451–3458. [PubMed: 8560811]
- Stanford TR, Sparks DL. Systematic errors for saccades to remembered targets: evidence for a dissociation between saccade metrics and activity in the superior colliculus. *Vision Res* 1994;34(1):93–106. [PubMed: 8116272]
- Straube A, Fuchs AF, Usher S, Robinson FR. Characteristics of saccadic gain adaptation in rhesus macaques. *J Neurophysiol* 1997;77:874–895. [PubMed: 9065856]
- Takeichi N, Kaneko CR, Fuchs AF. Discharge of monkey nucleus reticularis tegmenti pontis neurons changes during saccade adaptation. *J Neurophysiol* 2005;94(3):1938–1951. [PubMed: 15917328]
- Takeichi N, Kaneko CR, Fuchs AF. Activity changes in monkey superior colliculus during saccade adaptation. *J Neurophysiol* 2007;97(6):4096–107. [PubMed: 17442764]
- Van Gelder P, Lebedev S, Tsui WH. Peak velocities of visually and nonvisually guided saccades in smooth-pursuit and saccadic tasks. *Exp Brain Res* 1997;116:201–215. [PubMed: 9348121]
- Walker R, Kentridge RW, Findlay JM. Independent contributions of the orienting of attention, fixation offset and bilateral stimulation on human saccade latencies. *Exp Brain Res* 1995;103:294–310. [PubMed: 7789437]
- Wallman J, Fuchs AF. Saccadic gain modification: visual error drives motor adaptation. *J Neurophysiol* 1998;80:2405–2416. [PubMed: 9819252]
- Wenban-Smith MG, Findlay JM. Express saccades: Is there a separate population in humans? *Exp Brain Res* 1991;87:218–222. [PubMed: 1756828]

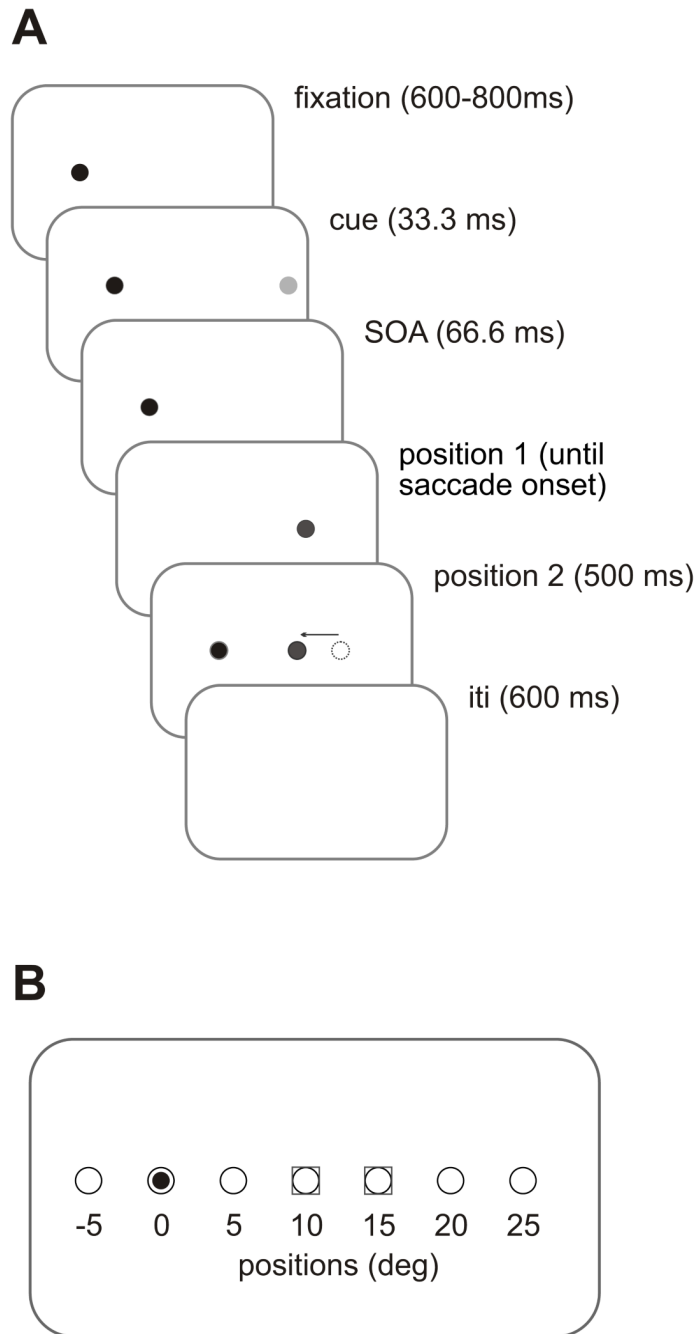


Figure 1. Task Setup

A. Trial sequence for an adaptation trial. Each trial began when a fixation target appeared for a random time (600–800 ms - 36 to 48 frames in 6 frame intervals) (black filled circle). Next, a behaviorally irrelevant cue (light filled gray circle) was presented at one of 7 locations (see **B**) for 33.3 ms. Subjects were asked to ignore the presence of the cue. Following a stimulus onset asynchrony (SOA) time of 66.7 ms, a target was presented at 15°, labeled as position 1 (darker gray circle). During the saccade, the position of the target shifted 5° backward (gray arrow) toward fixation (position 2 - gray circle). The shortest saccade duration was 44 ms, and the target was always visible at its new location before the end of the saccade. The target then remained illuminated for 500 ms (30 frames). During control trials, the target was not shifted,

i.e. position 1 and 2 were identical, either at 10° or at 15° . The inter-stimulus interval (ITI) was 600 ms (36 frames). **B:** Locations of targets and cues. The possible positions of the cues (open circles) were 5° left of fixation (small black circle inside the open circle), at fixation (dimming of the fixation target), and 5° , 10° , 15° , 20° and 25° right of fixation. Target locations are shown as gray squares surrounding the open circles. Cues could appear randomly at one of 7 positions. In addition, there was a no cue condition, which had the same timings.

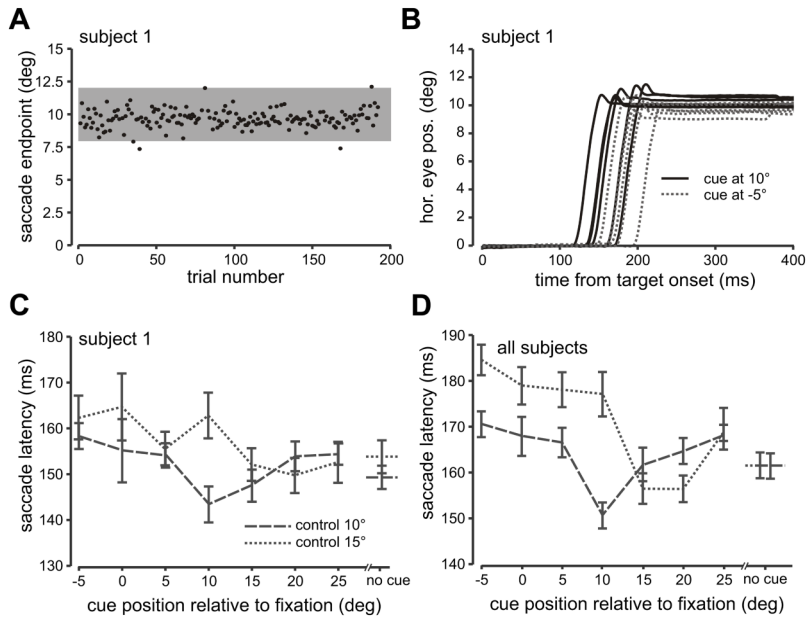


Figure 2. Control Trials

A. Saccade amplitude is plotted as a function of trial number for the 10° control saccade block from subject 1. Black dots represent saccade endpoint for each trial. The gray region demarcates the range of saccade amplitudes that were included in the analysis ($2^\circ \pm$ target amplitude). **B.** 6 trials from **A** are shown with horizontal eye position plotted as a function of time from target onset randomly selected from two different cue conditions. The black solid traces depict trials in which the cue was flashed at 10° degrees (same location as the target) and the gray dotted traces depict trials in which the cue was flashed at 5° left of fixation. **C.** Average saccade latencies for each flashed cue position are plotted for the two control saccade groups 10° = dashed line and 15° = dotted line for subject 1 as in **A** and **B**. No cue in the x-axis represents the no-cue condition. Error bars are s.e.m. Please see supplemental Figure 1 for data from a second subject. **D.** Average saccade latencies across all subjects (7) are plotted in the same manner as **C**.

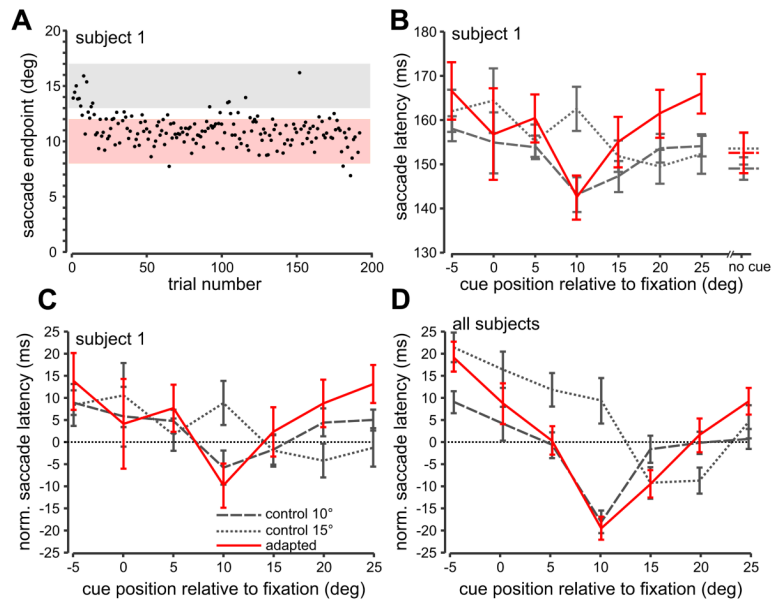


Figure 3. Saccade Adaptation Trials

A. Saccade amplitude as a function of trial number for the 15° to 10° adaptation block from subject 1. Same format as in Figure 2A. The pink region demarcates the range of saccade amplitudes that were included in the analysis (*adapted saccades*; $\pm 2^\circ$ of the 2nd target position). The gray region demarcates the range of saccade amplitudes that were included in Figure 5 (*un-adapted saccades*; $\pm 2^\circ$ of the 1st target position). **B.** Average *adapted* saccade latencies for each flashed cue position for the 15° to 10° adapted saccade condition (red line) for subject 1. For comparison, the 10° (dashed grey line) and 15° (dotted grey line) control saccade conditions are replotted from Figure 2C. Error bars are s.e.m. **C.** Saccade latencies from **B** are shown normalized to the mean of the no-cue trials within each control and adapted saccade condition. See also supplemental Figure 1 **D.** Normalized average adapted saccade latencies across all subjects for the 15° to 10° adapted saccade condition (red line) plotted with the 10° (dashed grey line) and 15° control conditions (dotted grey line).

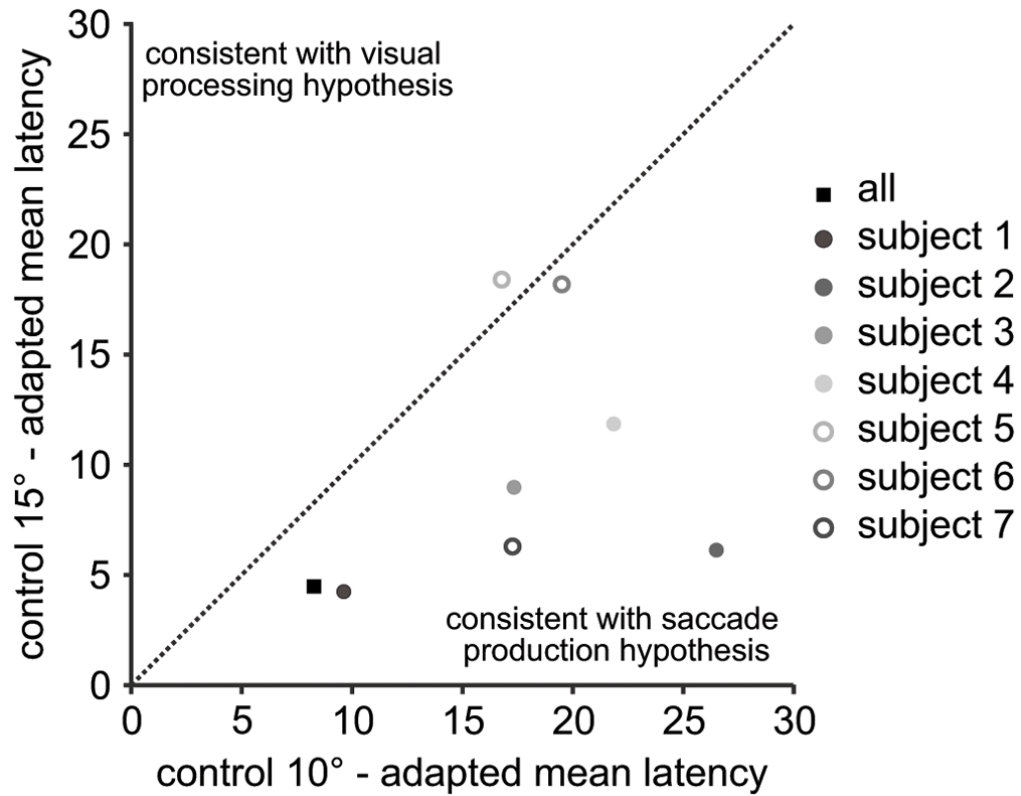


Figure 4. Direct comparison between motor and visual hypotheses

The x-axis plots the mean absolute difference between the average adapted saccade latencies and the average 10° control latencies. The differences between the mean latencies at each cue location were calculated and then all 7 differences were averaged. The y-axis plots the mean absolute difference between the average adapted saccade latencies and the average 15° control latencies. Each dot represents one subject and the black filled square represents the mean difference from all subjects. The diagonal line represents unity. A data point below the line is consistent with the motor production hypothesis because the difference between the adapted saccade and the 10° control target latencies are smaller than the difference between the adapted saccade the 15° control target latencies. A data point above the line of unity is consistent with the visual processing hypothesis.

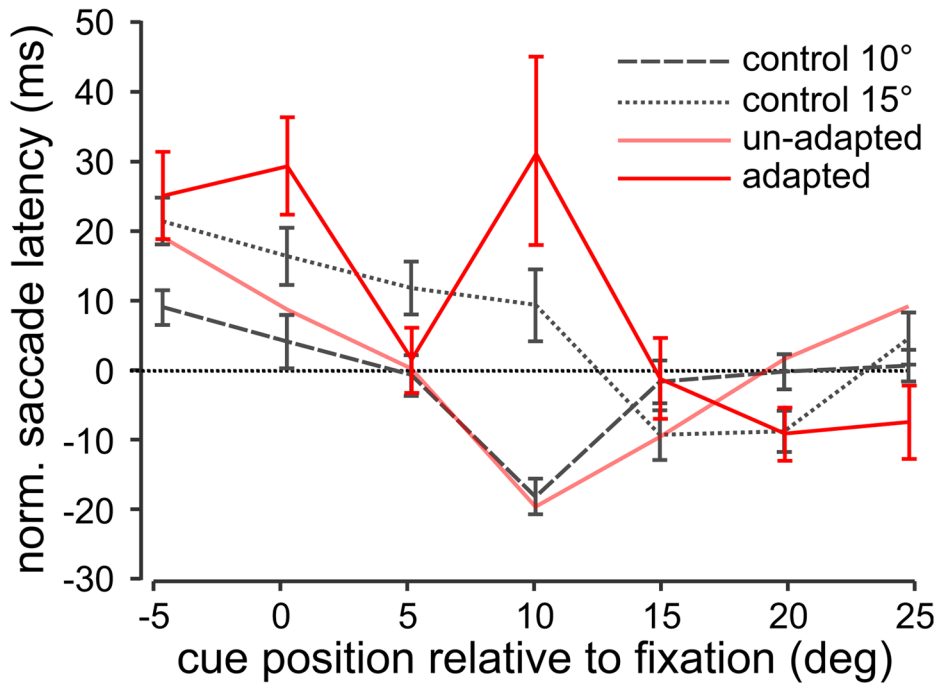


Figure 5. Un-adapted saccade latencies

A. Average *un-adapted* normalized saccade latencies across all subjects for the 15° to 10° adapted saccade condition plotted as a function of cue position (thicker red line) as in Figure 3. Un-adapted saccades were defined as saccades that fell within $\pm 2^\circ$ of the 1st target position as shown by the gray region in Figure 3A. For comparison reasons, the 10° and 15° control and *adapted* saccade latencies are re-plotted as well as the *adapted* saccade latency curve from Figure 4E (light red line).

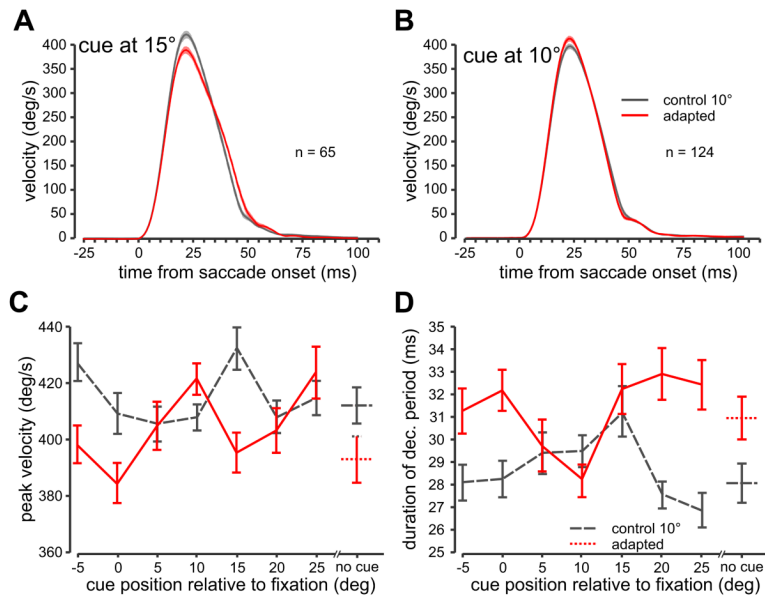


Figure 6. Saccade dynamics

A. Average eye velocity profiles are shown for the adapted (red traces + s.e.m – shaded regions) and the 10° control (gray traces) conditions when the cue was presented at 15° (visual target location). Saccades are aligned at saccade onset. **B.** Average velocity profiles when the cue was presented at 10° (saccade goal location). **C.** Peak velocity as a function of cue position. **D.** Duration of the deceleration period of the saccade (peak velocity to saccade end) as a function of cue position. Error bars are s.e.m.

Table 1

Correlations. Correlations between the adapted saccade and the 15° (visual target) control latencies (column 2) as well as between the adapted saccade and the 10° (motor goal) control latencies (column 3) across all subjects and for each individual subject. The number in the parenthesis in the heading is the N for each comparison.

subject	adapted/15° control(7)	adapted/10° control (7)
all	r = .469	r = .918**
subject 1	-.347	.902**
subject 2	.071	.890**
subject 3	.055	.614
subject 4	-.074	.444
subject 5	.554	.256
subject 6	.365	.595
subject 7	.966**	.926**

* p<0.05,

** p<0.001.