



Published in final edited form as:

J Neurosci. 2011 May 25; 31(21): 7591–7603. doi:10.1523/JNEUROSCI.0151-11.2011.

Chorda Tympani Nerve Terminal Field Maturation and Maintenance Is Severely Altered Following Changes To Gustatory Nerve Input to the Nucleus of the Solitary Tract

Sara L. Dudgeon¹ and David L. Hill²

¹ Neuroscience Graduate Program, PO Box 400400, University of Virginia, Charlottesville, VA 22904-4400

² Department of Psychology, PO Box 400400, University of Virginia, Charlottesville, VA 22904-4400

Abstract

Neural competition among multiple inputs can affect the refinement and maintenance of terminal fields in sensory systems. In the rat gustatory system, the chorda tympani, greater superficial petrosal, and glossopharyngeal nerves have distinct but overlapping terminal fields in the first central relay, the nucleus of the solitary tract (NTS). This overlap is largest at early postnatal ages followed by a significant refinement and pruning of the fields over a three-week period, suggesting that competitive mechanisms underlie the pruning. Here, we manipulated the putative competitive interactions among the three nerves by sectioning the greater superficial petrosal and glossopharyngeal nerves at postnatal day 15 (P15), P25, or at adulthood, while leaving the chorda tympani nerve intact. The terminal field of the chorda tympani nerve was assessed 35 days following nerve sections, a period before the sectioned nerves functionally regenerated. Regardless of the age when the nerves were cut, the chorda tympani nerve terminal field expanded to a volume four times larger than sham controls. Terminal field density measurements revealed that the expanded terminal field was similar to P15 control rats. Thus, it appears that the chorda tympani nerve terminal field defaults to its early postnatal field size and shape when the nerves with overlapping fields are cut, and this anatomical plasticity is retained into adulthood. These findings not only demonstrate the dramatic and lifelong plasticity in the central gustatory system, but also suggest that corresponding changes in functional and taste-related behaviors will accompany injury-induced changes in brainstem circuits.

INTRODUCTION

Age-related refinement of afferent terminal fields is a common characteristic of many sensory systems. This refinement often occurs in central structures where multiple inputs converge onto the same target area, suggesting that interactions among terminal fields shape their maturation. Examples are seen in the developing visual, somatosensory, and auditory systems (Pallas and Hoy, 1986; Shatz, 1990; Chiaia et al., 1992; Renehan et al., 1994; Gosse et al., 2008). Interestingly, these systems often maintain the ability to reorganize in response to experimental perturbations into adulthood (Chiaia et al., 1992; Chiaia et al., 1993; Jacquin et al., 1993; Renehan et al., 1994; Foeller and Feldman, 2004).

The gustatory system has multiple primary afferent inputs projecting to a common target area in the brainstem and these inputs are refined throughout development (Sollars et al., 2006; Mangold and Hill, 2007; May et al., 2008). Moreover, the developing gustatory system exhibits significant anatomical and functional plasticity (Lasiter and Kachele, 1990; King and Hill, 1991; Mangold and Hill, 2007, 2008; Thomas and Hill, 2008). The mechanisms that drive these changes have not been identified.

The chorda tympani, greater superficial petrosal, and glossopharyngeal nerves all carry orosensory information to the rostral nucleus of the solitary tract (NTS), where they form distinct but overlapping terminal fields (May and Hill, 2006). The terminal fields of the three nerves undergo morphological changes throughout postnatal development, with the chorda tympani nerve terminal field undergoing the greatest change (Sollars et al., 2006; Mangold and Hill, 2008). In particular, the volume of the rat chorda tympani nerve terminal field decreases by 57% from postnatal day 15 (P15) to P25, and then decreases another 41% by P35, at which age the volume remains constant into adulthood (Mangold and Hill, 2008). This age-related decrease in the chorda tympani nerve terminal field volume is accompanied by a decrease in the amount of shared terminal field with the glossopharyngeal nerve. The overlap of terminal field between the two nerves changes from 80% to 20% between P15 and P25. The amount of overlap between the chorda tympani and greater superficial petrosal nerves (~80%) does not change with age. To test the hypothesis that the developmental decrease in the chorda tympani nerve terminal field is influenced by interactions with the other two nerves, we unilaterally sectioned the greater superficial petrosal and glossopharyngeal nerves at P15, P25, or at adulthood and left the chorda tympani nerve intact. The terminal field morphology of the chorda tympani nerve was then examined before functional regeneration occurred (i.e., 35 days post nerve section) in each of the three groups. The results show that the chorda tympani nerve terminal field volume remains at, or expands to, the immature volume seen in intact, P15 rats, regardless of the age at which the other two nerves were sectioned. This indicates that significant interactions among the three terminal fields shape terminal field development and a remarkable degree of plasticity in the gustatory brainstem is maintained throughout life.

METHODS

Animals

All experiments were approved by the University of Virginia Animal Care and Use Committee and followed guidelines set forth by the National Institutes of Health and the Society for Neurosciences. Pregnant dams and P65 (adult) female rats were purchased from Harlan Sprague Dawley (Indianapolis, IN). The male and female offspring of the pregnant dams born in the vivarium at the University of Virginia were used in P15 and P25 experiments. Animals were considered to be adults at P65, when terminal field volume and nerve taste-response profiles are stable and mature (Hill and Almlı, 1980; Ferrell et al., 1981; Mangold and Hill, 2008).

Nerve Cuts

Figure 1 shows the circuitry of the peripheral gustatory system with the three nerves of interest and their respective receptive fields and terminal fields. At P15 (n=6), P25 (n=5), or at adulthood (n=5), the right greater superficial petrosal and glossopharyngeal nerves were sectioned distal to their respective ganglion (Fig. 1). Rats were sedated with an intramuscular injection of 0.32mg/kg of Domitor (medetomidine hydrochloride; Pfizer Animal Health, Exton, PA) and anesthetized intramuscularly with 40mg/kg of Ketaset (ketamine hydrochloride; Fort Dodge Animal Health, Fort Dodge, IA). Body temperature was maintained with a water-circulating heating pad. After positioning in a non-traumatic

head holder, a ventral approach was taken to expose the greater superficial petrosal nerve. The greater superficial petrosal nerve was sectioned near the geniculate ganglion in the tympanic bulla. The glossopharyngeal nerve was approached medially to the tympanic bulla and sectioned (May and Hill, 2006; Mangold and Hill, 2008). After both nerves were cut, the incision was closed with sutures and an intramuscular injection of 1.6mg/kg Antisedan (atipamezole hydrochloride; Pfizer Animal Health) was given to reverse anesthesia. For sham animals, the same surgical approach was taken with the exception that the nerves were not sectioned (P15, n=4; adult, n=5).

For animals used in neurophysiological recordings from the glossopharyngeal nerve, only the left glossopharyngeal nerve was sectioned using the same surgical approach as described above.

Fluorescent Anterograde Nerve Labeling

Thirty-five days following nerve transection, the chorda tympani nerve ipsilateral to the nerve cuts was labeled with biotinylated dextran amine (BDA; Invitrogen, Carlsbad, CA). We showed earlier that all three terminal fields were mature by P50 (P15 + 35 day survival) (Mangold and Hill, 2007). Therefore, all of our measurements here were done at an age when the chorda tympani nerve terminal field was mature in controls. The chorda tympani nerve was accessed following the same procedure described for the greater superficial petrosal nerve section. The chorda tympani nerve was sectioned and crystals of BDA were applied to the proximal cut end of the nerve and the incision was closed with sutures. After a 48-hour survival, animals were deeply anesthetized with an intraperitoneal injection of 2.4 mg/kg urethane (ethyl-carbamate; Sigma-Aldrich, St. Louis, MO), and perfused transcardially with Krebs Henseleit buffer (pH 7.3), followed by 8% paraformaldehyde (pH 7.2).

Previous work showed that anterograde tracers placed on the chorda tympani nerve do not inadvertently label other nerves. Moreover, the tracer labels the full complement of chorda tympani nerve fibers (Mangold & Hill, 2008).

Tissue Preparation

Brains were removed and postfixed overnight in 8% paraformaldehyde. The medulla was blocked and a vibratome was used to section the tissue horizontally in 50 μ m sections. This allowed for visualization of the entire rostral-caudal extent of the terminal field in the NTS for each section (see below for details). Sections were incubated in PBS (pH 7.2) containing 0.2% Triton and 1:500 streptavidin Alexa Fluor 488 (Invitrogen, Carlsbad, CA) for one hour.

Confocal Microscopy and Analyses of Terminal Fields

Imaging—Chorda tympani nerve terminal fields were imaged using an Olympus IX70 microscope fitted with a Fluoview v5.0 scanning system (Olympus America, Melville, NY) and a 10X objective (UPlanSApo; NA=0.40). Sequential optical sections were captured every 3 μ m for each 50 μ m section. Images were obtained with settings adjusted so that pixel intensities were near (but not at) saturation. A transmitted light image at 4X (UPlanSApo; NA=0.13) and at 10X was captured for every physical section containing the labeled terminal field. This permitted an accurate registration of common dorsal to ventral brainstem sections among animals using common brainstem landmarks (4X), and identification of NTS borders (10X).

Analyses of Total Terminal Field Volume—Quantification of terminal field volume was achieved through the use of ImageJ software. To aid in comparisons among sections,

each image stack was initially rotated in ImageJ so that the solitary tract was oriented vertically (Fig. 2). With the corresponding transmitted light image used as a reference, the border of the NTS was outlined for each physical section. The stack was then cropped to include only the NTS (Fig. 2). The maximum entropy thresholder algorithm (Sahoo et al., 1988) was then applied to the pixel intensity frequency histogram for the entire image stack (i.e., all tiff files of every optical image). This yielded an 8-bit, binary image stack of the pixels above threshold representing labeled terminal field. Figure 2A shows the raw image for an optical section in grey scale overlaid by the thresholded image in red. Figure 2B shows the binary image of the pixels above threshold in the optical section and represents the data that was analyzed. A particle analysis was performed to quantify the pixel area above threshold. That is, the number of pixels above threshold for each optical section were summed by ImageJ, converted into area by multiplying the number of pixels by pixel size ($1.38\mu\text{m} \times 1.38\mu\text{m}$), and then multiplied by $3\mu\text{m}$ (i.e., distance between optical sections) to determine the volume of BDA label in each physical section. Volumes from each physical section were summed to yield the total terminal field volume for each rat. The resultant volume represents an unbiased experimenter measure of the amount of label.

We realize that the diameter of some of the unmyelinated chorda tympani nerve axons may be smaller than the pixel size obtained at 10X (i.e., $< 1.38\mu\text{m}$) (Whitehead and Frank, 1983). To address this, we examined the same region of interest at 10X and at 20X ($0.69\mu\text{m}$ per pixel) in a sham and in an adult-cut rat and found that the calculated volumes were within 10% of each other. Interestingly, the larger volumes in both cases were with the 20X measurement, perhaps due to the higher resolution imaging at 20X. Additionally, we chose to include axons (e.g., the solitary tract) along with the terminal field for all animals in our analyses because of the difficulty in accurately cropping out these elements from each optical section. Accordingly, the absolute volumes that we show here include the composite terminal field and axons. Since there is no obvious reorganization of nerve tracts following the experimental manipulation, we make the assumption that including the solitary tract in our measurements has a similar effect among groups.

Analyses of Terminal Field Volume and Density of Label in Dorsal-Ventral Zones—To identify where the potential reorganization of the chorda tympani nerve terminal field occurred following our experimental manipulation, we subdivided the NTS into X, Y, and Z planes. For the medial-lateral and rostral-caudal analyses (X and Y), the NTS in the horizontal plane was subdivided into uniform grid boxes of 200 pixels X 200 pixels ($276\mu\text{m} \times 276\mu\text{m}$; see grey lines in Fig. 2B). The grid was arranged relative to the NTS with the most medial and most rostral borders of the NTS as the 0,0 coordinate. The density of terminal field label was calculated in each grid box for each physical section by dividing the chorda tympani terminal field volume within a grid box by the volume of the respective portion of the NTS contained within the grid box (i.e., volume of terminal field label/volume of the NTS within the grid box). Thus, for grid boxes that extended beyond the borders of the NTS (e.g., upper left grid box of Fig. 2B), only the volume of the NTS contained within the grid box was used for analyses. In the case of the grid box in the upper left portion of Figure 2B, the volume of the NTS was $22,908.82\mu\text{m}^3$, whereas the grid box in the second row and second column contained the maximum volume of the NTS ($2,646,471.96\mu\text{m}^3$).

For analyses in the dorsal-ventral planes (Z), we examined the volume of labeled terminal field in five dorsal-ventral zones, each consisting of $100\mu\text{m}$ (i.e., 2 horizontal sections/zone; Fig. 3). This type of analyses is similar to what has been done previously (King and Hill, 1991; Krimm and Hill, 1997; May and Hill, 2006; Sollars et al., 2006; Mangold and Hill, 2008), with the exception that the current data were analyzed for 5 instead of 3 dorsal-ventral zones. The orientation of the NTS within the brainstem is such that the caudal-most

portion of the NTS is dorsal to the rostral-most portion (see Mangold and Hill, 2007 and Fig. 3F). That is, the NTS extends ventrally and rostrally from the dorsal-most extent of the NTS. Therefore, Zone A more accurately represents the dorsal-caudal portion of the field in the NTS and Zone E represents the more ventral-rostral portion of the terminal field in the NTS. Since the NTS shape changes throughout its dorsal to ventral extent, we chose to combine 2, 50 μ m sections into each zone, thereby, permitting analyses of labeled density across closely aligned regions of interest.

Zone A is characterized by the sections where the 4th ventricle occupies the largest medial-lateral extent, where the solitary tract extends from the rostral pole to the caudal NTS, where the spinal trigeminal tract extends to near the rostral pole of the NTS, and by a lack of the hypoglossal and facial nuclei (Fig. 3A). Zone B also has the 4th ventricle extending in the medial-lateral plane, but less so than in Zone A, the solitary tract is confined to the caudal portion of the NTS, the NTS extends to near the dorsal cochlear nucleus, and the spinal trigeminal tract extends just rostral to the rostral pole of the NTS. As in Zone A, there is no hypoglossal nucleus; however, the dorsal-most extent of the facial nucleus may be present (Fig. 3B). Zone C is characterized by a significant thinning of the 4th ventricle compared to Zones A and B, the solitary tract extends throughout the NTS and is more medially located than in Zones A and B, the rostral pole of the NTS extends to the level of dorsal cochlear nucleus, and both the hypoglossal and facial nuclei are evident. The spinal trigeminal tract extends beyond the rostral pole of the NTS in this zone (Fig. 3C). Zone D is at the level ventral to the 4th ventricle, the NTS has elongated to the mid region of the ventral cochlear nucleus and has narrowed significantly compared to the more dorsal zones. The hypoglossal and facial nuclei are clearly seen in this zone (Fig. 3D). Finally, in Zone E the borders of the NTS are difficult to distinguish because of the many tracts and neuropil. However, compared to Zone D, the NTS in Zone E extends rostrally to the mid rostral-caudal level of the ventral cochlear nucleus. The spinal trigeminal nucleus is less obvious in this zone compared to Zone D and the hypoglossal and facial nuclei are larger and more distinct in this zone compared to the more dorsal zones (Fig. 3E). See Figure 3F for relative positions of the zones within the NTS.

These landmarks were consistent among sham and nerve cut groups. To check for reliability, a person naive to the groups assigned sections for each animal into the 5 zones, based on the characterization detailed above, and these were compared to the assignments made by the authors. With minor exceptions, the dorsal-ventral zone assignments among investigators were consistent.

Examination of Terminal Fields in Coronal Sections—The NTS from two control and two experimental animals were sectioned coronally on a vibratome at 50 μ m and imaged as described above. Coronal sections were used to examine the extent of chorda tympani nerve terminal field expansion with respect to the subdivisions of the NTS. No quantitative measurements were taken. Coronal sections were then stained for myelin (Schmued, 1990) following confocal microscopy to allow visualization of labeled chorda tympani nerve terminal fields in anatomical subdivisions of NTS.

Statistical Analysis

Terminal Field Volumes—The mean (\pm SEM) was calculated for the total chorda tympani nerve terminal field volumes for all sections and for terminal field volumes within defined dorsal-ventral zones. Comparisons were made between experimental groups and sham controls using independent samples t-tests. Results from the *post-hoc* analysis with $p < 0.05$ are reported as significant.

Density by Dorsal – Ventral Zones—Density measures were analyzed by zone within the 6x7 (column X row) grid by MANOVA (SPSS; IBM Corporation, Somers, NY). For the density analysis, we chose to show the partial eta squared value for each grid box to illustrate the location of the weightings that contribute to the overall statistical effect.

Assessment of Regeneration of Greater Superficial Petrosal and Glossopharyngeal Nerves and Associated Taste Buds

The primary goal of this study was to examine the terminal field plasticity of the chorda tympani terminal field before the greater superficial petrosal and glossopharyngeal nerves functionally regenerated. Gustatory nerves and their associated taste buds undergo degeneration and then regeneration following nerve transection (Guth, 1957; Iwayama, 1970; Cheal et al., 1977; Cheal and Oakley, 1977; St John et al., 2003). As an indicator of the degree of regeneration of the greater superficial petrosal and glossopharyngeal nerves, we used a combination of histological and neurophysiological measures. For the glossopharyngeal nerve, we examined the number and morphology of taste buds in foliate papillae ipsilateral to the nerve section (Fig. 1) in addition to recording neurophysiological taste responses from the sectioned glossopharyngeal nerve on and around 35 days post surgery. To assess regeneration of the greater superficial petrosal nerve, we examined the number and morphology of taste buds in the nasoincisor duct (Fig. 1). Neurophysiological responses were not recorded from the greater superficial petrosal nerve.

Taste Bud Immunohistochemistry—We used anti-cytokeratin 19 and anti-cytokeratin 20, markers of intermediate filament proteins (Steinert et al., 1984), to stain for taste buds. Previous work showed the specificity of the immunoreactivity in rat lingual epithelium (Oakley et al., 1993; Zhang and Oakley, 1996; McCluskey and Hill, 2002; Hendricks et al., 2004).

The right greater superficial petrosal and glossopharyngeal nerves were sectioned, as described earlier, in animals at P15 (n=6), P25 (n=4) or adulthood (n=5). Thirty-five days later, animals were deeply anesthetized, perfused, and fixed with an acid-alcohol fixative. Tissue was obtained from the nasoincisor duct and from foliate papillae and sectioned at 10 μ m on a cryostat (Leica CM3050S) following sucrose infiltration (Barthel and Raymond, 1990). Tissue was incubated for 1 hour in primary antibody (monoclonal anti-cytokeratin 4.62, 1:400, Sigma-Aldrich, St. Louis, MO; monoclonal mouse anti-human cytokeratin 20, 1:25, Dako, Denmark), followed by a 45 minute incubation in secondary antibody (anti-mouse rhodamine-red, 1:500, Jackson ImmunoResearch, West Grove, PA), and coverslipped using ProLong Gold (Invitrogen, Carlsbad, CA) before imaging on a fluorescent microscope.

All sections containing the foliate papilla were imaged and analyzed for the presence of taste buds along the epithelium of the papilla. All sections containing the nasoincisor duct were imaged and examined for the presence of taste buds along the apical and ductal epithelia (El-Sharaby et al., 2004).

Whole Nerve Recordings from the Glossopharyngeal Nerve—Animals were deeply anesthetized with urethane (1.6mg/kg), placed on a water-circulating heating pad to maintain body temperature and tracheotomized. The hypoglossal nerves were cut bilaterally to prevent tongue movements. To enhance access to the foliate papillae, sutures were placed around the lower jaw, in the anterior tongue, just rostral to the ipsilateral foliate papillae, and through the right cheek (Halsell et al., 1993; Travers and Norgren, 1995; Halsell and Travers, 1997) and were retracted to allow clear access to foliate papillae and to permit effective stimulation of the foliate taste buds. Following the ventral approach described

previously for the glossopharyngeal nerve cut, the nerve was exposed, cut, and desheathed. The desheathed glossopharyngeal nerve was then placed on a platinum electrode with a reference electrode positioned in nearby muscle tissue. A mixture of petroleum jelly and mineral oil was placed in the cavity around the nerve to prevent drying.

Chemical grade reagents were used as taste stimuli and were dissolved in artificial saliva except for quinine hydrochloride, which was dissolved in distilled water. Responses to 2M NH_4Cl , 2M NaCl, 2M KCl and 0.1M quinine hydrochloride were recorded and analyzed with LabChart 6 (AD Instruments, Colorado Springs, CO). Solutions were applied to the posterior tongue via syringe in 2ml aliquots and were followed by rinses with artificial saliva (Hellekant et al., 1985). Tactile responses induced by brushing a pipette along the foliate papillae were also recorded. For the purposes of this experiment, responses were quantified as present or absent to aid in determining the time course of glossopharyngeal nerve regeneration. Since our goal was to assess if any functional regeneration occurred in the nerve, we chose to use relatively high stimulus concentrations and did not analyze relative response magnitudes. That is, we sought to answer the question does the nerve respond to taste stimuli, not how does it respond?

Whole Nerve Recordings from the Chorda Tympani Nerve—To examine potential nerve cut induced changes in chorda tympani nerve function, we recorded whole nerve taste responses from the chorda tympani nerve in twenty-two additional rats at approximately 35 days post nerve cut (P15 cut, n=5; P25 cut, n=3; Adult cut, n=5; P15 sham, n=2; P25 sham, n=3; Adult sham, n=4). Rats were prepared for recordings similar to that described for the glossopharyngeal nerve, with the exception that access to the chorda tympani nerve was gained by using a mandibular approach. The nerve was exposed near the tympanic bulla, cut, desheathed, and positioned on a platinum electrode. A second electrode was placed in nearby muscle to serve as ground. A mixture of petroleum jelly and mineral oil was placed in the cavity around the nerve.

All chemical stimulus were reagent grade and prepared in artificial saliva. Neural responses to a concentration series of 0.05, 0.1, 0.25, and 0.5 M NaCl, sodium acetate (NaAc), and NH_4Cl were recorded. Each concentration series was bracketed by application of 0.5M NH_4Cl . In addition, responses were recorded to 0.01N HCl and 1.0M sucrose. Solutions were applied to the tongue in 5 ml aliquots with a syringe and allowed to remain on the tongue for ~40 sec. After each solution application, the tongue was rinsed with artificial saliva for >1 min. Chorda tympani nerve responses were calculated as follows: the mean height of the tonic response was measured from 5 - 15 sec after stimulus application, and response magnitudes were expressed as ratios relative to the mean of the 0.5M NH_4Cl responses before and after stimulation. Response data were retained for analysis only when 0.5M NH_4Cl responses that bracketed a concentration series varied by <10%.

Statistical Analysis: Neurophysiological responses were compared between nerve sectioned and sham rats using independent-samples t-tests. The α level was set at $p < 0.05$, and adjusted to compensate for the number of statistical tests conducted within a concentrations series.

RESULTS

Taste Bud Immunohistochemistry

Taste buds in sham rats were counted for each age group. There were no significant differences in the mean (\pm SEM) number of taste buds among groups (NID: P15, 46.5 \pm 12.5; P25, 32.5 \pm 6.5; Adult, 37.3 \pm 2.0; Foliate: P15, 79.6 \pm 7.6; P25, 98.3 \pm 13.3, Adult, 101.0

± 8.1). Therefore, all sham age group results were combined for this portion of data analysis (NID mean \pm SEM: 37.2 ± 3.9 , $n=9$; Foliate mean \pm SEM: 92.6 ± 5.7 , $n=14$).

Rats With Nerve Sections at P15—Previous work in the gustatory system shows that the age of nerve section (chorda tympani or glossopharyngeal) plays a role in determining how many taste buds return when a cut nerve regenerates, with nerve cut at younger ages leading to less taste bud regeneration than following nerve cut at adulthood (Hosley et al., 1987; Sollars, 2005). Therefore, we expect fewer taste buds to regenerate in this group compared to the groups where nerves are cut in older animals.

Thirty-five days following greater superficial petrosal and glossopharyngeal nerve section at P15, the number of taste buds in the nasoincisor duct and in foliate papillae was reduced by 40% ($p < 0.05$) and 75% ($p < 0.0001$), respectively, compared to sham rats. Qualitatively, the epithelial anatomy did not appear different from that in sham animals. For this study, rats underwent unilateral nerve sections, however, the nasoincisor duct is a bilaterally innervated structure (Miller and Spangler, 1982). Therefore, we expected roughly 50% of taste buds to remain after unilateral nerve section since they were supported by the uncut nerve. This is in line with our results showing a 40% reduction in the number of taste buds in the nasoincisor duct, confirming that the greater superficial petrosal nerve that was sectioned had not regenerated at the time of assessment. Additionally, taste buds that remained present on the nasoincisor duct were restricted to the side contralateral to the nerve sections. The foliate taste buds that remained ipsilateral to the nerve section were not oriented correctly along the taste epithelium to allow access to taste stimuli. They were misshapen and taste pores were not readily identifiable, suggesting that they are unable to transmit incoming sensory information onto the brain. Taste pores were not counted, as the abnormal morphology of taste buds and lack of nerve function (see below) were strong indicators that regeneration of the glossopharyngeal nerve had not fully occurred.

Rats With Nerve Sections at P25—Similarly, 35 days after greater superficial petrosal and glossopharyngeal nerve cut at P25 there was a significant reduction in the number of nasoincisor duct ($p < .005$) and foliate ($p < .005$) taste buds, representing a 63% and a 50% reduction compared to sham animals, respectively. Qualitatively and quantitatively, the remaining nasoincisor duct and foliate taste buds were similar to those seen in rats with nerve sections at P15.

Rats With Nerve Sections at Adulthood—Finally, at 35 days post nerve section at adulthood, there was a significant reduction in the number of nasoincisor duct taste buds (54%, $p < 0.05$). However, there was not a significant difference in the number of foliate taste buds as compared to shams (10% increase, $p > 0.05$). Qualitatively, these taste buds appeared different than shams in that they were not oriented along the taste epithelium, their shape was rounded not elongated, and taste pores were not as readily identifiable as in sham rats (Fig. 4).

Since the number of foliate taste buds in adult cut animals was consistent with those of shams, we recorded whole nerve responses from the glossopharyngeal nerve to confirm that even though taste buds associated with the glossopharyngeal nerve were present, the nerve was not functional at 35 days post nerve cut.

Whole Nerve Recordings From the Glossopharyngeal Nerve

Recordings of glossopharyngeal nerve activity were done at 30 ($n=1$), 35 ($n=3$) and 42 ($n=1$) days post nerve cut in rats with nerve sections at adulthood to confirm that the nerve had not functionally regenerated at 35 days post cut. Taste responses were not observed at any

period examined at or before 35 days post glossopharyngeal nerve section, indicating that the nerve was not functional. Thus, even though taste buds were present at 35 days post nerve cut, taste information was not transmitted to the NTS. Figure 4C shows representative responses of the glossopharyngeal nerve to NH_4Cl , NaCl , KCl and quinine hydrochloride in a control animal. Figure 4D shows representative responses to the same stimuli in an animal that had the glossopharyngeal nerve sectioned 35 days prior to recording. There was no change in steady state response from baseline following application of the stimulus, despite the presence of taste buds in the foliate papillae. At 42 days post nerve cut, we were able to record weak taste responses from the glossopharyngeal nerve, indicating that the nerve does maintain the ability to regenerate and that our terminal field labels were done prior to functional regeneration.

To summarize, at 35 days post nerve cut there is evidence for incomplete regeneration of the glossopharyngeal nerve (presence of taste buds in comparable numbers to control) but no evidence that the nerve is transmitting afferent taste information. We felt it was not necessary to do these experiments in the P15 cut and P25 cut groups because there was no recovery of taste buds. This set of experiments gave us confidence that the greater superficial petrosal and glossopharyngeal nerves had not regenerated at the time we examined the chorda tympani nerve terminal field.

Whole Nerve Recordings From the Chorda Tympani Nerve

No differences in chorda tympani nerve response magnitudes to taste stimuli existed among the three experimental groups (i.e., P15, P25, adult cuts) and among the respective three sham control groups. Therefore, we pooled the data for each group for analysis.

Figure 5 shows mean (\pm SEM) relative response magnitudes from the chorda tympani nerve to a concentration series of NaCl for sham and cut rats. For both groups, response magnitudes increased with increasing stimulus concentration up to 0.25M NaCl . Increasing stimulus concentration beyond 0.25M did not produce increased response magnitudes in both cut and sham rats (Fig. 5). No significant differences existed between cut and sham rats for any stimulus, including to 0.01N HCl and 1.0M sucrose ($p > 0.10$). Although these recordings do not allow a comparison of absolute activity levels, they provide evidence that the chorda tympani nerve had normal function in nerve cut rats.

Chorda Tympani Nerve Terminal Field Volume

Total Terminal Field

Sham Rats: There was no significant difference in terminal field volume between P15 and adult sham groups; therefore, terminal field results from sham groups were combined. All sham animals had chorda tympani nerve terminal field volumes comparable to adult controls from another study in our lab with the same imaging and analysis, but with different experimenters (personal observation). This indicates no effect of sham surgery.

Rats With Nerve Sections at P15: Chorda tympani nerve terminal field volumes at adulthood in animals that had the greater superficial petrosal and glossopharyngeal nerves sectioned at P15 were significantly larger than shams ($p < 0.05$; Fig. 6A-F). Sham rat terminal fields represent just 26% of P15 cut terminal field volumes indicating a large volumetric expansion of terminal field following nerve section (Fig. 7A) as well as an 34% increase in the number of physical sections ($50\mu\text{m}$) containing labeled terminal field (Fig. 7B). Therefore, sectioning the greater superficial petrosal and the glossopharyngeal nerves at P15 resulted in a chorda tympani nerve terminal field volume roughly four-fold larger than would be expected if the animals were allowed to develop normally. These results infer that the normal developmental decrease in chorda tympani nerve terminal field volume was

interrupted when the composite afferent input to the rostral NTS was altered at an early stage of terminal field maturation.

Rats With Nerve Sections at P25: The chorda tympani nerve terminal field volume of animals that had the greater superficial petrosal and glossopharyngeal nerves sectioned at P25 was significantly larger than shams ($p < 0.0001$, Fig. 6A-C, G-I). Terminal field volume in sham rats was 27% of the terminal field volume in the P25 nerve section group, indicating that this group also had a chorda tympani nerve terminal field volume at adulthood roughly four times larger than shams (Fig. 7A). The expansion of chorda tympani nerve terminal field in the P25 cut group mimicked the expansion seen in the P15 cut group. Again, there were a significantly greater number of physical sections that contained labeled terminal field as compared to sham rats (32% increase, Fig. 7B). Combined, the results indicate that when the greater superficial petrosal and glossopharyngeal nerves were cut at P25, the uncut chorda tympani nerve terminal field not only expanded in volume, but also reorganized along the dorsal ventral axis.

Rats With Nerve Sections at Adulthood: Surprisingly, animals in which the greater superficial petrosal and the glossopharyngeal nerves were sectioned at adulthood also had chorda tympani nerve terminal field volumes significantly larger than sham controls ($p < 0.05$; Fig. 6A-C; J-L) indicating that the ability to respond to perturbations of the gustatory system was retained into adulthood. Sham control volumes represented 20% of the chorda tympani nerve terminal field volume in the adult cut group (Fig. 7A). As in the P15 and P25 cut groups, there was a significant increase in the number of physical sections containing terminal field label (32% increase, Fig. 7B). This again represents a spread of the chorda tympani nerve terminal field along the dorsal ventral axis, as well as an increase in the volume of the terminal field, a pattern of expansion that followed results seen in the P15 and P25 nerve cut groups.

Although this study was not designed to critically evaluate when the chorda tympani nerve terminal field changed post nerve section, we took a cursory look at rats with nerve sections at adulthood to examine the time course of field expansion. We examined total chorda tympani nerve terminal field volumes at 5 ($n=2$), 6 ($n=3$), 8 ($n=2$), 10 ($n=3$), and 15 ($n=2$) days post nerve cut. We then determined the exponential line of best fit (plateau followed by one phase association) and found that the plateau ($4.7 \times 10^6 \mu\text{m}^3$) that approximated the mean total chorda tympani nerve terminal field occurred at approximately 15 days following nerve cut ($R^2=0.35$; Fig. 8). Therefore, based on this examination, changes in adult-sectioned induced expansion of the chorda tympani nerve terminal field occurred well before we took our measurements (at 35 days post nerve cut).

As an aside, we also took a cursory examination of the chorda tympani nerve terminal field in the NTS contralateral to the nerve sections in adult-sectioned rats ($n=3$). For each rat, the total terminal field volume was similar to that found in sham rats, indicating that the effects noted here are confined to the chorda tympani nerve terminal field ipsilateral to the nerve sections.

Spread of Expanded Terminal Field in the Horizontal Plane—To further examine the expanded terminal field in the horizontal plane, the density of label was calculated for sham and cut groups that survived 35 days post surgery. We did not analyze the very dorsal and very ventral regions of the NTS, as these areas contained labeled chorda tympani nerve terminal field in cut groups only. However, we reiterate that the finding of label in these regions suggests a rearrangement of terminal field along the dorsal-ventral axis.

To illustrate the results of this analysis, we will present the results from sham rats and then from the adult cut group first, because the latter group underwent the greatest degree of chorda tympani nerve terminal field expansion.

Sham Rats: In sham rats, chorda tympani nerve terminal field label was found along the dorsal-ventral extent (Fig. 9F-J) of the NTS zones analyzed but was mainly restricted to the central three zones (Zones B-D; Fig. 9G-I). The densest areas of labeled chorda tympani nerve terminal field were found in these central regions, and label was concentrated in the rostral, medial portions of the NTS (also see Fig. 6). Little to no label was located in the caudal or lateral portions of the NTS.

Rats With Nerve Sections at Adulthood: Rats that received nerve cut at adulthood had a significantly greater volume of labeled chorda tympani nerve terminal field in Zone A compared to sham control rats (6.8 fold greater; $p < 0.05$; Fig. 9A). In this zone, the terminal field was primarily found in the rostral, medial portion of the NTS similar to that seen in sham rats (Figs. 9F, K) but was much denser than label found in the same region in sham animals. Significant differences in the density of label in this zone were found also in the medial and caudal portions of the NTS (Fig. 9P). This analysis is consistent with the spread of terminal field examined in the photomicrographs presented in Figures 6A,J. In Zone B, a similar pattern to Zone A occurred. There was a greater volume of labeled chorda tympani nerve terminal field in this zone for both groups (Figs. 9A,B), and like in Zone A, there was significantly more label (6.5 fold) in the adult cut group as compared to shams (Figs. 9G,L), with the label densest in the rostral, medial portion of the NTS. As in Zone A, significant increases in density of label were also found in the more caudal portions of the NTS in the adult cut group compared to sham controls (Fig. 9Q). In Zone C, we found the greatest amount of terminal field label for both groups, but a significantly greater volume of labeled chorda tympani nerve terminal field in the adult cut group (2.6 fold, Fig. 9C). At this level, the label was again mainly concentrated in the rostral, medial portions of the NTS (Fig. 9M), but we did not find any significant changes in density at any locations compared to controls (Fig. 9R). In Zone D, there was a significantly greater volume of labeled chorda tympani nerve terminal field in the cut group compared to sham controls (1.6 fold, Fig. 9D). Again, the label was concentrated in the rostral, medial portion of the NTS in the cut group (Fig. 9N), where the label was much denser than in the sham control group (Fig. 9S). At this more ventral zone of NTS, the spread of chorda tympani nerve terminal was not as great as the spread at the dorsal levels, which is consistent with the photomicrographs presented in Figure 6J-L. In Zone E, there was very little volume of terminal field in both sham and cut groups, and no difference was found between them (Fig. 9E). However, consistent with other levels of NTS the label in the cut groups was concentrated in the rostral, medial portions of NTS (Fig. 9O) and was denser than that of the shams in these regions (Fig. 9T).

In summary, the results shown here indicate that the adult chorda tympani nerve terminal field expanded primarily in the dorsal regions of NTS following greater superficial petrosal and glossopharyngeal nerve cut, although there were also ventrally located changes. Within these zones, there often was a spread of terminal field to more caudally located territory, areas unoccupied in sham controls. Interestingly, the zone with the largest amount of label (Zone C) in both groups was the least affected by the experimental manipulation. It is noteworthy that in addition to the zones analyzed here, there was a significant amount of terminal field label in adult cut rats dorsal and ventral to label seen in sham controls. There was an average of 100 μ m and 10 μ m of tissue containing labeled chorda tympani nerve terminal field more dorsal and ventral, respectively, to that found in sham rats.

Rats with Nerve Sections at P15: Rats that received nerve cut at P15 did not have differences in chorda tympani nerve terminal field volume in the most dorsal zones, Zones A

and B, but there were significant volumetric differences in Zones C - E. In these 3 most ventral zones, the P15 cut group had significant increases in labeled densities throughout the rostral, medial, and caudal portions of the NTS. As in the adult cut group, the densest label was concentrated in the rostral, medial portion of the NTS. Moreover, in P15 cut rats, there was an average of 83 μ m of NTS that contained labeled chorda tympani nerve terminal field dorsal to Zone A, and an average of 33 μ m of NTS containing label more ventral than Zone E. The increase of label dorsal to Zone A contributed greatly to both the increase in total volume and the increase in dorsal-ventral spread of terminal field.

Rats with Nerve Sections at P25: Rats that received nerve cuts at P25 only had greater mean volumes of labeled chorda tympani nerve terminal field in Zones B and E as compared to sham rats. However, significant increases in the density of the labeled terminal field were found across zones. Significant increases in density in Zones A and B were found in the caudal portions of the NTS, while in Zones D and E, increases in density were found in the rostral, medial and caudal regions of the NTS. The same pattern of labeling was seen in this group, where the densest label was concentrated in the rostral, medial portion of the NTS. Additionally, there was an average of 170 μ m and 40 μ m of NTS containing labeled chorda tympani nerve terminal field more dorsally and ventrally, respectively, than found in sham rats.

Terminal Field Expansion in the Coronal Plane

To further examine the spread of expanded chorda tympani nerve terminal field following greater superficial petrosal and glossopharyngeal nerve sections, terminal field-labeled tissue from sham and adult cut rats was sectioned in the coronal plane.

Analyses showed that the chorda tympani nerve terminal field in sham control rats was restricted primarily to the rostrocentral and rostrolateral subdivisions of the NTS consistent with an examination of chorda tympani nerve terminal field in coronal sections (Contreras et al., 1982; Whitehead, 1990). Coronal analysis of adult nerve cut animals showed that the dramatically expanded chorda tympani nerve terminal field was also restricted to the rostrocentral and rostrolateral subdivisions of the NTS (Fig. 10). This finding indicates that there is no invasion into inappropriate territory of the NTS that is not normally occupied by chorda tympani nerve terminal field.

Comparison to Immature Chorda Tympani Nerve Terminal Field

Since all three cut groups had similar chorda tympani nerve terminal fields, there may be a return to an immature state (i.e., large volume and spread) after the greater superficial petrosal and glossopharyngeal nerves are sectioned. That is, with the loss of competition, the chorda tympani nerve terminal field appears to revert to an immature stage. We compared the expanded chorda tympani nerve terminal field in P15 cut, P25 cut, and adult cut rats with the chorda tympani terminal field in P15 rats ($n = 7$). Volumetrically, there was no significant difference between the immature terminal field mean total volume to that from any cut group (P15 control: 4.14 ± 0.8 ; P15 cut: 3.75 ± 1.1 ; P25 cut: 3.55 ± 0.4 ; adult cut: $4.72 \pm 1.2 \mu\text{m}^3$; $p > 0.05$). There were also no differences in the dorsal-ventral spread of labeled chorda tympani nerve terminal field. We further compared the spread and density of chorda tympani nerve terminal field in the horizontal plane between P15 control and cut groups and found only minor differences. These results show that by cutting the greater superficial petrosal and glossopharyngeal nerves, the chorda tympani nerve reverts to an immature state where it occupies a much larger portion of the NTS than in adulthood. These results support the hypothesis that interactions among the three gustatory nerves drive the developmental decrease of terminal field.

Results Summary

Altering gustatory input to the rostral NTS at any age by sectioning the glossopharyngeal and greater superficial petrosal nerves dramatically affects the terminal field morphology of the intact chorda tympani nerve terminal field. This effect occurs within the first two weeks post nerve cut, well before regeneration of the sectioned nerves. Rats that received nerve cut had greater volumes, dorsal-ventral spread and horizontal spread of chorda tympani nerve terminal field than sham rats. The expanded terminal fields in cut groups mimics those found in P15 control rats.

DISCUSSION

The current study shows that sectioning the glossopharyngeal and greater superficial nerves, which normally have overlapping terminal fields with themselves and with the chorda tympani nerve, results in a dramatically expanded terminal field volume of the intact chorda tympani nerve when examined thirty five days following nerve cuts. This rearrangement occurred regardless of the age of the animal when the nerves were cut. The chorda tympani nerve terminal field volume in *all* cut groups was roughly four-fold larger than that of sham animals. Although the terminal fields expanded in all planes compared to sham controls (rostral-caudal, medial-lateral, dorsal-ventral), the enlarged terminal field did not cross the boundaries of the NTS to invade subnuclei that do not typically receive chorda tympani nerve input. Rather, the enlarged chorda tympani nerve terminal fields found in cut animals occupied space occupied by the terminal field at early stages of development (Mangold and Hill, 2007). Indeed, the expanded chorda tympani nerve terminal field was not different from the immature terminal field in measures of volume, dorsal-ventral extent of label, and spread in the horizontal plane.

Our density analyses of chorda tympani nerve terminal field provide new insights into the distribution and amount of label within the rostral NTS for both sham rats and for rats with nerve cuts. For all groups and all dorsal-ventral zones, we found that the highest density of terminal field label occurred in the rostral, medial portion of the NTS. This dense rostral, medial region has been seen qualitatively in other studies (Lasiter and Kachele, 1990; King and Hill, 1991; Krimm and Hill, 1997; Pittman and Contreras, 2002); however, this is the first study to quantify the amount of chorda tympani nerve terminal field label. Through the density analyses we found that, with the exception of the dorsal-ventral zone that contained the highest amount of terminal field label in sham and in adult cut rats, the label density in the rostral, medial area of the dorsal-ventral NTS zones was dramatically increased in all nerve cut groups compared to sham controls. This indicates that the caudal and lateral spread of the chorda tympani nerve terminal field did not occur at the expense of label in the dense rostral, medial region.

Perhaps the most surprising finding of this study was that the chorda tympani nerve terminal field volume and the spread of the field in *all* nerve cut groups were greater than in sham controls. We hypothesized that loss of input to the NTS from the greater superficial petrosal and glossopharyngeal nerves would alter the developmental pruning of the chorda tympani nerve terminal field (Mangold and Hill, 2008) by ‘freezing’ the field at the developmental stage when the nerves were cut. For example, we expected the P25 cut group to have a terminal field size and distribution similar at 35 days post cut (i.e., at adulthood) to that found in animals aged P25, and that the adult nerve cuts would have no effect on the terminal field because the chorda tympani field was fully pruned by that age.

Our data not only show that our original hypotheses are incorrect, they provide a snapshot into how plastic the chorda tympani nerve terminal field remains throughout development. Since the dorsal region is occupied by all three terminal fields at the time of

glossopharyngeal and greater superficial nerve cuts at P15 (Mangold and Hill, 2008), the terminal field expands into the intermediate and ventral regions of the NTS, where less overlap among the three fields exists. At P25, the chorda tympani nerve terminal field has undergone some developmental pruning across the dorsal-ventral extent of the NTS (Mangold and Hill, 2008), but the amount of pruning is not complete. For the P25 cut group, the terminal field expands to occupy regions from which it has been pruned (i.e. along the dorsal-ventral axis and in the rostral, medial and caudal regions of the NTS). Finally, the adult cut group has territory in the NTS into which it can expand in all three planes. In short, these dynamic changes suggest that without competition from overlapping terminal fields, the chorda tympani nerve terminal field reverts to its immature, pre-pruned state.

Following glossopharyngeal nerve transection, performance on many taste-related behavioral tasks is unaffected despite the loss of a large population of taste buds (St John et al., 1994, 2003; Spector, 2005). Our anatomical results suggest a functional explanation for this disparity. The expanded chorda tympani nerve terminal field may functionally compensate for the lost input from taste buds to maintain normal behavioral responses.

We propose that mechanisms related to competition among elements in the three overlapping terminal fields in the NTS account for the changes seen here. Work in other sensory systems strongly indicate that competition among afferent neurons for neurotrophins, synaptic space, and other neurally-mediated factors refine their synaptic inputs, often in an activity-dependent manner (Murphey and Lemere, 1984; Shatz, 1990; Chiaia et al., 1992; Jacquin et al., 1993; Penn and Shatz, 1999; Foeller and Feldman, 2004; Demas et al., 2006; Gosse et al., 2008). For example, increased sprouting of intact primary somatosensory axonal arbors occurs after denervation of neighboring inputs in immature and mature systems (Chiaia et al., 1993; Renehan et al., 1994); these changes do not appear to be activity dependent (Henderson et al., 1992; Jacquin et al., 1993). In contrast, work in the visual system showed that the age-related refinement of retinal ganglion cell arbors is dependent both on activity-dependent (Sretavan and Shatz, 1986; Karmarkar and Dan, 2006) and activity-independent mechanisms (Wilkinson, 2000; Gosse et al., 2008).

Although not tested directly here, the density results are consistent with outcomes that would be attributable to competition. For example, we found in all cut groups that the chorda tympani nerve terminal field expanded dorsally into areas normally occupied by the glossopharyngeal nerve terminal field and had a similar topography of labeling throughout the NTS as seen for the glossopharyngeal nerve (May and Hill, 2006; Mangold and Hill, 2007, 2008). Similarly, the loss of competition through sectioning the greater superficial petrosal nerve, which normally shares a dense, rostral, medial region of its terminal field with the chorda tympani nerve (Mangold and Hill, 2007), may have contributed to the increase in chorda tympani nerve terminal field density in this location. Thus, loss of one or more inputs at any age may shift the balance of competition to the intact chorda tympani nerve, resulting in increased axonal growth and/or branching. Given that the chorda tympani nerve appears to be more plastic during development and following early dietary manipulations than the other two nerves (Mangold and Hill, 2007, 2008), it may be that the terminal fields from the other nerves may not expand like that of the chorda tympani nerve in this experimental paradigm.

The rearrangements reported here may relate to activity-dependent and activity-independent mechanisms. If a loss of competing inputs onto target neurons in the NTS leads to new synapses and axonal processes from the spared chorda tympani nerve, such an increase in functional synaptic inputs could in turn lead to the release or enhanced uptake of axonal growth factors such as neurotrophins. Cutting the other two nerves could also lead to a local

immune response that may induce a permissive environment for axonal growth and/or changes in the afferent signal carried by the chorda tympani nerve.

The resultant expansion of the terminal fields seen here is consistent with other studies of central gustatory development and plasticity that may also involve some level of competition. When the afferent gustatory system is perturbed, the chorda tympani nerve terminal field reverts to or exceeds an immature size by adulthood, primarily through the expansion of terminal fields in the dorsal zones of the NTS (King and Hill, 1991; Krimm and Hill, 1997; May and Hill, 2006; Mangold and Hill, 2007, 2008; May et al., 2008). For these studies, early developmental dietary manipulations produced attenuated neural responses and/or changes in the early environment of the peripheral and central nervous system that resulted in expanded terminal fields at adulthood (Sollars et al., 2006; Thomas and Hill, 2008). In some cases, the expanded terminal fields only occurred at adulthood (Mangold and Hill, 2008).

Although we show similarities in chorda tympani nerve terminal field among all cut groups and that the fields are similar to P15 control rats, the impact on the overall circuitry of the gustatory system at the level of the NTS and centrally may not be the same. That is, it is not clear if the local and descending components of the circuits show the same types of plastic changes among groups. Some of the other components of the circuitry may be differentially less affected than the chorda tympani nerve terminal field with age. However, it is likely that the experimentally induced changes in the chorda tympani nerve terminal field has an impact on the overall circuitry of the rostral NTS and the functional processing of orosensory signals. The functional changes may in turn have significant consequences on age-related behavioral taste preferences and aversions.

Acknowledgments

This research was supported by NIH grants DC00407 and DC006938. We extend our appreciation to Ms. Sarah L. Deal for assistance with tissue processing and data analysis, and Dr. Peter C. Brunjes for the use of his confocal laser microscope.

References

- Barthel LK, Raymond PA. Improved method for obtaining 3-microns cryosections for immunocytochemistry. *J Histochem Cytochem.* 1990; 38:1383–1388. [PubMed: 2201738]
- Cheal M, Oakley B. Regeneration of fungiform taste buds: temporal and spatial characteristics. *J Comp Neurol.* 1977; 172:609–626. [PubMed: 838892]
- Cheal M, Dickey WP, Jones LB, Oakley B. Taste fiber responses during reinnervation of fungiform papillae. *J Comp Neurol.* 1977; 172:627–646. [PubMed: 838893]
- Chiaia NL, Bauer WR, Rhoades RW. Prenatal development of the receptive fields of individual trigeminal ganglion cells in the rat. *J Neurophysiol.* 1993; 69:1171–1180. [PubMed: 8492156]
- Chiaia NL, Bennett-Clarke CA, Eck M, White FA, Crissman RS, Rhoades RW. Evidence for prenatal competition among the central arbors of trigeminal primary afferent neurons. *J Neurosci.* 1992; 12:62–76. [PubMed: 1309577]
- Contreras RJ, Beckstead RM, Norgren R. The central projections of the trigeminal, facial, glossopharyngeal and vagus nerves: an autoradiographic study in the rat. *J Auton Nerv Syst.* 1982; 6:303–322. [PubMed: 7169500]
- Demas J, Sagdullaev BT, Green E, Jaubert-Miazza L, McCall MA, Gregg RG, Wong RO, Guido W. Failure to maintain eye-specific segregation in nob, a mutant with abnormally patterned retinal activity. *Neuron.* 2006; 50:247–259. [PubMed: 16630836]
- El-Sharaby A, Ueda K, Wakisaka S. Immunohistochemical distribution of growth-associated protein 43 (GAP-43) in developing rat nasoincisor papilla. *Anat Rec A Discov Mol Cell Evol Biol.* 2004; 277:370–383. [PubMed: 15052664]

- Ferrell MF, Mistretta CM, Bradley RM. Development of chorda tympani taste responses in rat. *J Comp Neurol.* 1981; 198:37–44. [PubMed: 7229140]
- Foeller E, Feldman DE. Synaptic basis for developmental plasticity in somatosensory cortex. *Curr Opin Neurobiol.* 2004; 14:89–95. [PubMed: 15018943]
- Gosse NJ, Nevin LM, Baier H. Retinotopic order in the absence of axon competition. *Nature.* 2008; 452:892–895. [PubMed: 18368050]
- Guth L. The effects of glossopharyngeal nerve transection on the circumvallate papilla of the rat. *Anat Rec.* 1957; 128:715–731. [PubMed: 13478886]
- Halsell CB, Travers SP. Anterior and posterior oral cavity responsive neurons are differentially distributed among parabrachial subnuclei in rat. *J Neurophysiol.* 1997; 78:920–938. [PubMed: 9307125]
- Halsell CB, Travers JB, Travers SP. Gustatory and tactile stimulation of the posterior tongue activate overlapping but distinctive regions within the nucleus of the solitary tract. *Brain Res.* 1993; 632:161–173. [PubMed: 8149226]
- Hellekant G, af Segerstad CH, Roberts T, van der Wel H, Brouwer JN, Glaser D, Haynes R, Eichberg JW. Effects of gymnemic acid on the chorda tympani proper nerve responses to sweet, sour, salty and bitter taste stimuli in the chimpanzee. *Acta Physiol Scand.* 1985; 124:399–408. [PubMed: 4050473]
- Henderson TA, Woolsey TA, Jacquin MF. Infraorbital nerve blockade from birth does not disrupt central trigeminal pattern formation in the rat. *Brain Res Dev Brain Res.* 1992; 66:146–152.
- Hendricks SJ, Brunjes PC, Hill DL. Taste bud cell dynamics during normal and sodium-restricted development. *J Comp Neurol.* 2004; 472:173–182. [PubMed: 15048685]
- Hill DL, Almli CR. Ontogeny of chorda tympani nerve responses to gustatory stimuli in the rat. *Brain Res.* 1980; 197:27–38. [PubMed: 7397561]
- Hosley MA, Hughes SE, Morton LL, Oakley B. A sensitive period for the neural induction of taste buds. *J Neurosci.* 1987; 7:2075–2080. [PubMed: 3612229]
- Iwayama T. Changes in the cell population of taste buds during degeneration and regeneration of their sensory innervation. *Z Zellforsch Mikrosk Anat.* 1970; 110:487–495. [PubMed: 5516547]
- Jacquin MF, Zahm DS, Henderson TA, Golden JP, Johnson EM, Renehan WE, Klein BG. Structure-function relationships in rat brainstem subnucleus interpolaris. X. Mechanisms underlying enlarged spared whisker projections after infraorbital nerve injury at birth. *J Neurosci.* 1993; 13:2946–2964. [PubMed: 7687282]
- Karmarkar UR, Dan Y. Experience-dependent plasticity in adult visual cortex. *Neuron.* 2006; 52:577–585. [PubMed: 17114043]
- King CT, Hill DL. Dietary sodium chloride deprivation throughout development selectively influences the terminal field organization of gustatory afferent fibers projecting to the rat nucleus of the solitary tract. *J Comp Neurol.* 1991; 303:159–169. [PubMed: 2005238]
- Krimm RF, Hill DL. Early prenatal critical period for chorda tympani nerve terminal field development. *J Comp Neurol.* 1997; 378:254–264. [PubMed: 9120064]
- Lasiter PS, Kachele DL. Effects of early postnatal receptor damage on development of gustatory recipient zones within the nucleus of the solitary tract. *Brain Res Dev Brain Res.* 1990; 55:57–71.
- Mangold JE, Hill DL. Extensive reorganization of primary afferent projections into the gustatory brainstem induced by feeding a sodium-restricted diet during development: less is more. *J Neurosci.* 2007; 27:4650–4662. [PubMed: 17460078]
- Mangold JE, Hill DL. Postnatal reorganization of primary afferent terminal fields in the rat gustatory brainstem is determined by prenatal dietary history. *J Comp Neurol.* 2008; 509:594–607. [PubMed: 18546275]
- May OL, Hill DL. Gustatory terminal field organization and developmental plasticity in the nucleus of the solitary tract revealed through triple-fluorescence labeling. *J Comp Neurol.* 2006; 497:658–669. [PubMed: 16739199]
- May OL, Erisir A, Hill DL. Modifications of gustatory nerve synapses onto nucleus of the solitary tract neurons induced by dietary sodium-restriction during development. *J Comp Neurol.* 2008; 508:529–541. [PubMed: 18366062]

- McCluskey LP, Hill DL. Sensitive periods for the effect of dietary sodium restriction on intact and denervated taste receptor cells. *Am J Physiol Regul Integr Comp Physiol.* 2002; 283:R1275–1284. [PubMed: 12376422]
- Miller IJ, Spangler KM. Taste bud distribution and innervation on the palate of the rat. *Chemical Sense.* 1982; 7:99–108.
- Murphey RK, Lemere CA. Competition controls the growth of an identified axonal arborization. *Science.* 1984; 224:1352–1355. [PubMed: 6729457]
- Oakley B, Lawton A, Riddle DR, Wu LH. Morphometric and immunocytochemical assessment of fungiform taste buds after interruption of the chorda-lingual nerve. *Microsc Res Tech.* 1993; 26:187–195. [PubMed: 8241558]
- Pallas SL, Hoy RR. Regeneration of normal afferent input does not eliminate aberrant synaptic connections of an identified auditory interneuron in the cricket, *Teleogryllus oceanicus*. *J Comp Neurol.* 1986; 248:348–359. [PubMed: 3722462]
- Penn AA, Shatz CJ. Brain waves and brain wiring: the role of endogenous and sensory- driven neural activity in development. *Pediatr Res.* 1999; 45:447–458. [PubMed: 10203134]
- Pittman DW, Contreras RJ. Dietary NaCl influences the organization of chorda tympani neurons projecting to the nucleus of the solitary tract in rats. *Chem Senses.* 2002; 27:333–341. [PubMed: 12006373]
- Renehan WE, Crissman RS, Jacquin MF. Primary afferent plasticity following partial denervation of the trigeminal brainstem nuclear complex in the postnatal rat. *J Neurosci.* 1994; 14:721–739. [PubMed: 7507983]
- Sahoo PK, Soltani S, Wong KC, Chen YC. A Survey of Thresholding Techniques. *Computer Vision, Graphics, and Image Processing.* 1988:233–260.
- Schmued LC. A rapid, sensitive histochemical stain for myelin in frozen brain sections. *J Histochem Cytochem.* 1990; 38:717–720. [PubMed: 1692056]
- Shatz CJ. Competitive interactions between retinal ganglion cells during prenatal development. *J Neurobiol.* 1990; 21:197–211. [PubMed: 2181063]
- Sollars SI. Chorda tympani nerve transection at different developmental ages produces differential effects on taste bud volume and papillae morphology in the rat. *J Neurobiol.* 2005; 64:310–320. [PubMed: 15898061]
- Sollars SI, Walker BR, Thaw AK, Hill DL. Age-related decrease of the chorda tympani nerve terminal field in the nucleus of the solitary tract is prevented by dietary sodium restriction during development. *Neuroscience.* 2006; 137:1229–1236. [PubMed: 16338076]
- Spector AC. The functional consequences of gustatory nerve regeneration as assessed behaviorally in a rat model. *Chem Senses.* 2005; 30(Suppl 1):i66–67. [PubMed: 15738199]
- Sretavan DW, Shatz CJ. Prenatal development of cat retinogeniculate axon arbors in the absence of binocular interactions. *J Neurosci.* 1986; 6:990–1003. [PubMed: 3701418]
- St John SJ, Garcea M, Spector AC. Combined, but not single, gustatory nerve transection substantially alters taste-guided licking behavior to quinine in rats. *Behav Neurosci.* 1994; 108:131–140. [PubMed: 8192839]
- St John SJ, Garcea M, Spector AC. The time course of taste bud regeneration after glossopharyngeal or greater superficial petrosal nerve transection in rats. *Chem Senses.* 2003; 28:33–43. [PubMed: 12502522]
- Steinert PM, Jones JC, Goldman RD. Intermediate filaments. *J Cell Biol.* 1984; 99:22s–27s. [PubMed: 6204990]
- Thomas JE, Hill DL. The effects of dietary protein restriction on chorda tympani nerve taste responses and terminal field organization. *Neuroscience.* 2008; 157:329–339. [PubMed: 18845228]
- Travers SP, Norgren R. Organization of orosensory responses in the nucleus of the solitary tract of rat. *J Neurophysiol.* 1995; 73:2144–2162. [PubMed: 7666129]
- Whitehead MC. Subdivisions and neuron types of the nucleus of the solitary tract that project to the parabrachial nucleus in the hamster. *J Comp Neurol.* 1990; 301:554–574. [PubMed: 2177063]
- Whitehead MC, Frank ME. Anatomy of the gustatory system in the hamster: central projections of the chorda tympani and the lingual nerve. *J Comp Neurol.* 1983; 220:378–395. [PubMed: 6643734]

- Wilkinson DG. Topographic mapping: organising by repulsion and competition? *Curr Biol.* 2000; 10:R447–451. [PubMed: 10873795]
- Zhang C, Oakley B. The distribution and origin of keratin 20-containing taste buds in rat and human. *Differentiation.* 1996; 61:121–127. [PubMed: 8983178]

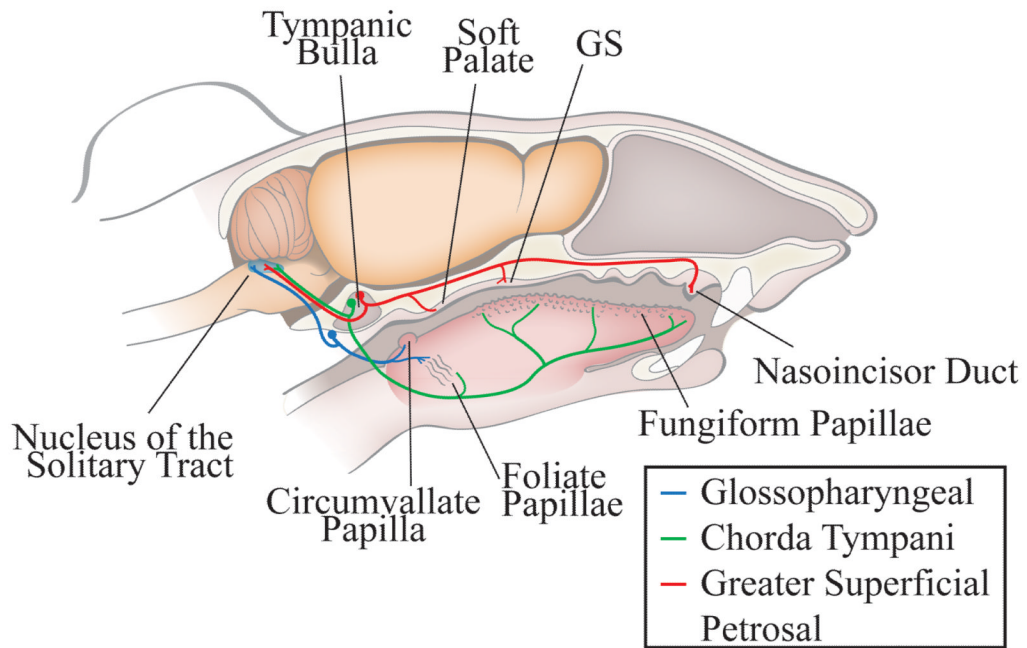


Figure 1. Anatomical organization of the peripheral gustatory system and the first central synaptic relay, the nucleus of the solitary tract

The chorda tympani nerve (green) innervates taste buds in fungiform papillae on the anterior tongue and the anterior foliate papillae on the posterior tongue. The greater superficial petrosal nerve (red) innervates taste buds on the soft palate, the geschmacksstreifen (GS), and the nasoincisor duct in the palate. The cell bodies of the chorda tympani and the greater superficial petrosal nerves are in the geniculate ganglia, which is located within the tympanic bulla. The glossopharyngeal nerve (blue) innervates the circumvallate papilla and the posterior foliate papillae, both on the posterior tongue. The cell bodies of the glossopharyngeal nerve are located in the petrosal ganglion, located on the medial edge of the tympani bulla. All three nerves form terminal fields in the ipsilateral nucleus of the solitary tract.

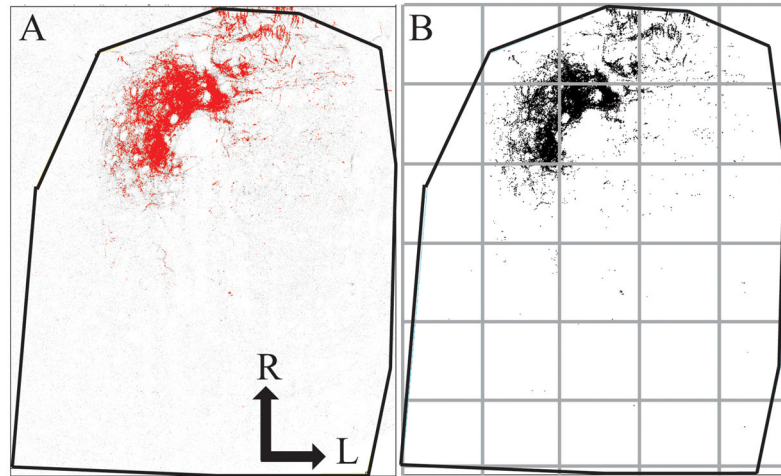


Figure 2. Method for measuring terminal field volume and density

Confocal stacks of the chorda tympani nerve terminal field were rotated in ImageJ so the solitary tract was orientated vertically, the borders of the NTS were defined, and the stack was cropped to include only the NTS. The maximum entropy thresholder algorithm was applied to the stack. For each optical section, pixels above threshold (A, red) were overlaid on the raw imaged (A, grey). A binary image of the pixels above threshold (B) represents data that were analyzed using particle analysis. The NTS in the horizontal plane (outline shown in black lines) was subdivided into 200 pixel \times 200 pixel uniform grid boxes for density analysis, with the grid (see grey boxes) arranged relative to the NTS with the most medial and rostral borders of the NTS as the 0,0 coordinate. R, rostral; L, lateral.

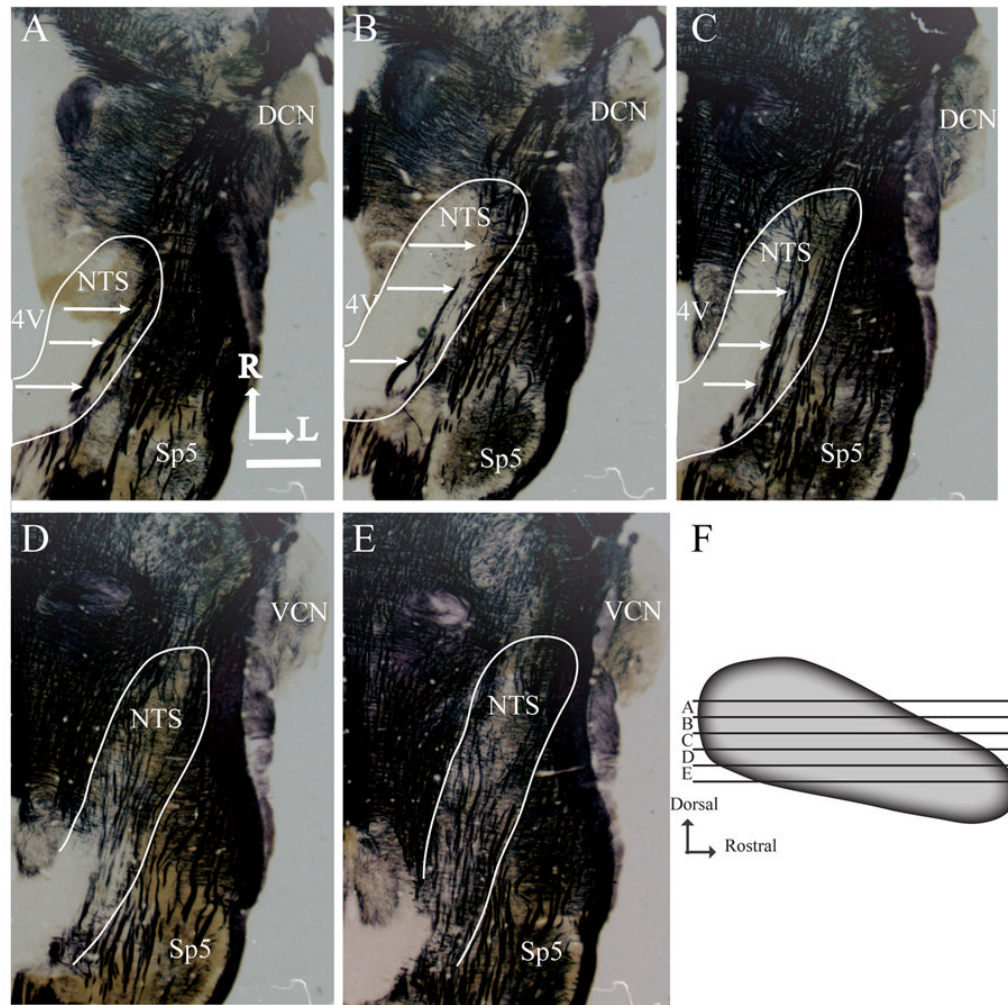


Figure 3. Myelin stained horizontal brainstem sections and sagittal view of the nucleus of the solitary tract showing zones used for analysis
 A-E illustrates the shape of the NTS and other brainstem structures at five successive dorsal-ventral levels of NTS. The NTS is outlined in white, and white arrows point to the solitary tract. 4V, fourth ventricle; Sp5, spinal trigeminal nucleus; DCN, dorsal cochlear nucleus; VCN, ventral cochlear nucleus; R, rostral; L, lateral. Scale bar (in A), 1mm. Panel F shows the five dorsal-ventral levels of the NTS used for volume and density analysis with respect to the shape of the NTS. Each zone (A-E) represents 100 μ m of NTS.

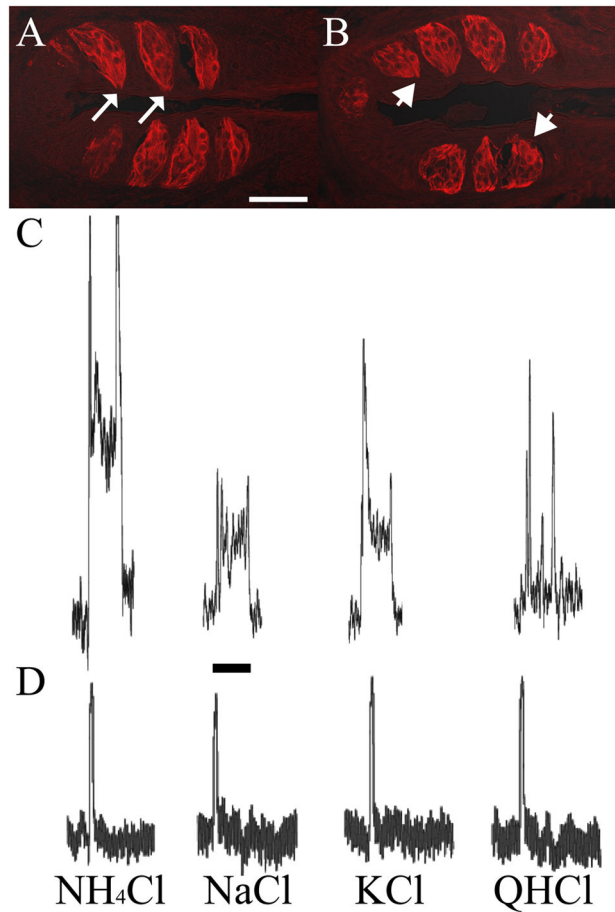


Figure 4. The glossopharyngeal nerve does not functionally regenerate within thirty-five days following nerve section

(A) Foliate taste buds from sham rats stained with cytokeratin-20 have a characteristic elongated shape, and are oriented with taste pores (white arrows) adjacent to the epithelium. In contrast, foliate taste buds from rats that underwent glossopharyngeal nerve section thirty-five days prior to tissue collection (B) had taste buds with rounded shape, did not exhibit visible taste pores (white arrowheads), and were located further away from the epithelium as compared to shams. (C) Whole nerve recordings from the glossopharyngeal nerve of a sham rat showed robust, sustained taste responses to a variety of stimuli. (D) Whole nerve recordings from the glossopharyngeal nerve of a rat that underwent glossopharyngeal nerve section thirty-five days prior to recording showed no taste responses to a variety of taste stimuli. The transient response to each stimulus in C and D likely reflect temperature and tactile responses. Scale bars: (A), 50µm; (C) 15 seconds.

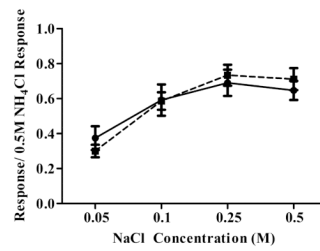


Figure 5. The function of the chorda tympani nerve is unaltered following greater superficial petrosal and glossopharyngeal nerve section

Whole nerve taste responses of the chorda tympani nerve to a concentration series of NaCl were unaffected by greater superficial petrosal and glossopharyngeal nerve cuts. In both control and nerve cut animals, responses to NaCl increased to 0.25M then plateaued. Closed circles = control. Closed squares = cut.

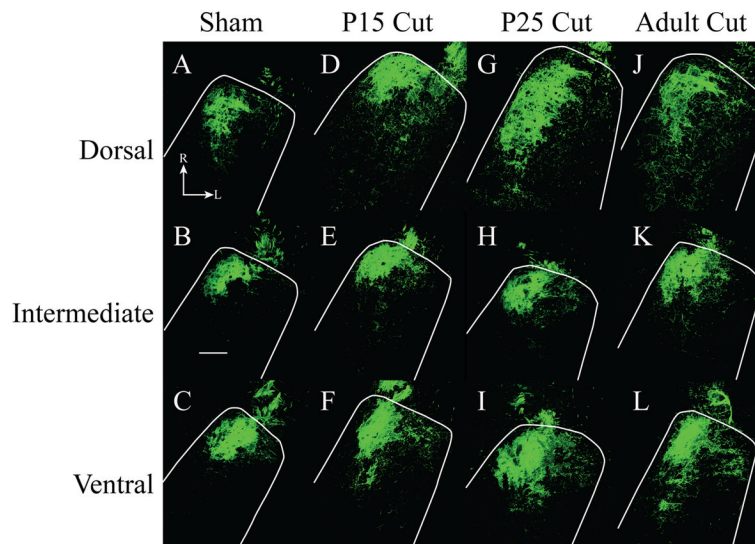


Figure 6. Horizontal sections of labeled chorda tympani nerve terminal field

Fluorescent micrographs are shown for sham (A-C), P15 cut (D-F), P25 cut (G-I), and adult cut (J-L) rats. The location of the NTS is outlined in white. The dorsal zone of labeled chorda tympani nerve terminal fields expanded in the caudal and lateral directions in all groups as compared to sham (A, D, G, J). There was little expansion of the chorda tympani nerve terminal field in the intermediate zone (B, E, H, K). Ventral zone sections showed increased chorda tympani nerve terminal field across all groups as compared to sham (C, F, I, L). Scale bar 200 μ m. R, rostral; L, lateral.

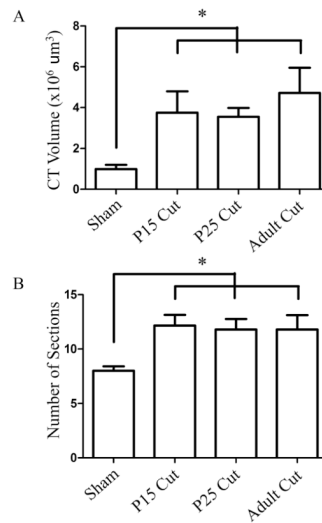


Figure 7. Mean chorda tympani nerve terminal field volumes and number of horizontal sections containing labeled terminal field

Total mean (\pm SEM) terminal field volume was significantly increased in all nerve cut groups compared to sham rat (A). The mean (\pm SEM) number of sections that contained labeled chorda tympani nerve terminal field was significantly increased in all nerve cut groups (B). * $p < 0.05$.

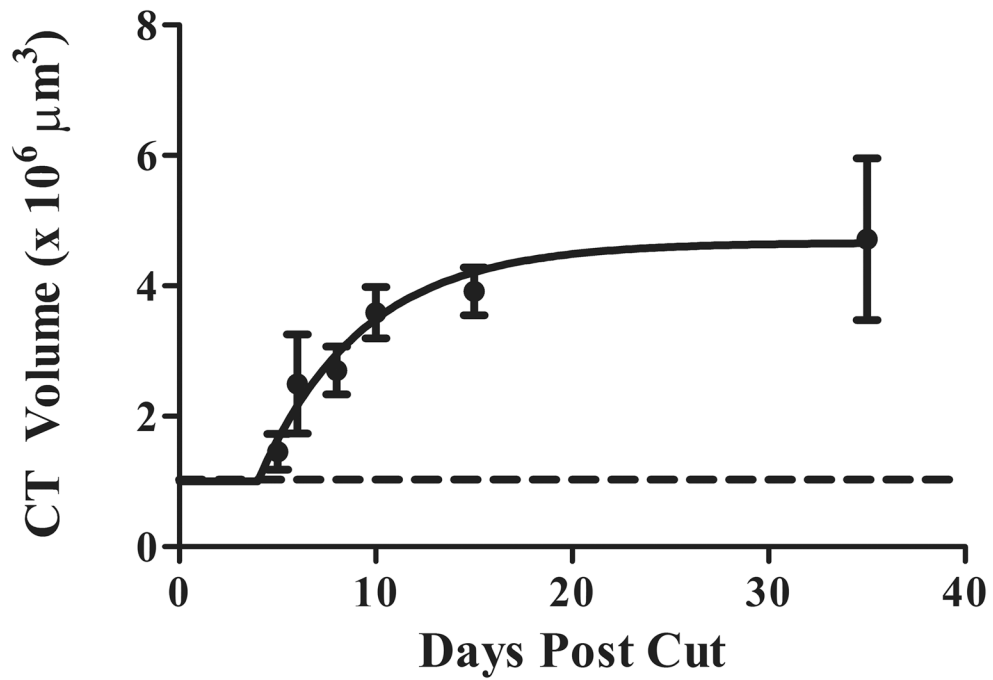


Figure 8. The chorda tympani nerve terminal field expands by 15 days post nerve cut
Total chorda tympani nerve terminal field volume was examined at 5, 6, 8, 10 and 15 days post nerve cut. An exponential line of best fit (plateau followed by one phase association) determined that the maximal expansion of chorda tympani nerve terminal field volume is complete within 15 days following greater superficial petrosal and glossopharyngeal nerve section. Closed circles = adult cuts; dotted line = sham.

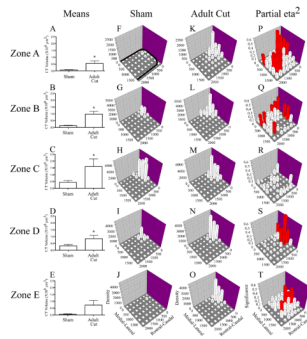


Figure 9. Chorda tympani nerve terminal field volumes and densities in X, Y, and Z planes in adult cut rats compared to sham controls

Mean (\pm SEM) chorda tympani nerve terminal field volumes in cut rats are greater than sham controls in four out of five dorsal-ventral zones (A-E). Density of terminal field label is shown for sham (F-J) and adult cut rats (K-O). The medial - lateral axis represents distance (μm) from the medial border of the NTS and rostral - caudal axis represents distance (μm) from the rostral pole of the NTS (see axes labels in J and O). The graphs are oriented along the same axis as the NTS is in the brainstem (see solid black line in F for outline of the NTS; also see Figs. 3 and 6). The z-axis represents the mean density of label ("Density" in J and O represents the volume of terminal field label/volume of the NTS contained within the grid box $\times 10^5 \mu\text{m}^3$). See methods for further detail. In each dorsal-ventral zone, the label was denser in the X and Y planes for the adult cut rats (F,K; G,L; H,M; I,N; J,O). P-T shows the magnitude of the statistical effect resulting from comparisons within each grid box for each dorsal-ventral level. The medial-lateral and rostral-caudal axes are the same as described for F-O. The z-axis in P-T show the partial eta squared values obtained from the MANOVA analysis. The greater the partial eta squared value (represented as "Significance" in T), the more significant the differences were between groups for the respective grid box. Red bars represent $p < 0.05$. With the exception of Zone C, there were significant differences between the two groups across the X, Y plane.

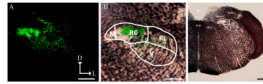


Figure 10. Chorda tympani nerve terminal field within NTS subdivisions: Coronal sections
The chorda tympani nerve terminal field of an adult cut rat was visualized in the coronal plane (A). The terminal field was constrained to the rostral central and rostral lateral subdivisions (B). Myelin stained sections show the location of the NTS relative to other brainstem structures (C). M, medial subdivision of the NTS; RC, rostral central subdivision of the NTS; RL, rostral lateral subdivision of the NTS; V, ventral subdivision of the NTS; 4V, 4th ventricle; FLM, medial longitudinal fasciculus; DPGi, dorsal paragigantocellular nucleus; MVeMC, medial vestibular nucleus magnocellular; MVePC, medial vestibular nucleus parvocellular; Pr, principal nucleus; SpVe, spinal vestibular nucleus. D, dorsal; L, lateral. Scale bars in each panel = 200µm.