



Published in final edited form as:

J Neurosci. 2012 February 8; 32(6): 2110–2120. doi:10.1523/JNEUROSCI.3584-11.2012.

A Phox2- and Hand2-dependent *Hand1* cis-regulatory element reveals a unique gene dosage requirement for *Hand2* during sympathetic neurogenesis

Joshua W. Vincentz¹, Nathan J. VanDusen¹, Andrew B. Fleming¹, Michael Rubart¹, Beth A. Firulli¹, Marthe J. Howard², and Anthony B. Firulli^{1,*}

¹Riley Heart Research Center, Herman B Wells Center for Pediatric Research Division of Pediatrics Cardiology, Departments of Anatomy and Medical and Molecular Genetics, Indiana Medical School, 1044 W. Walnut St., Indianapolis, IN 46202-5225, USA

²University of Toledo Health Sciences Campus, Department of Neurosciences and Program in Neurosciences and Degenerative Disease, Toledo, OH 43614, USA

Abstract

Neural crest cell specification and differentiation to a sympathetic neuronal fate serves as an important model for neurogenesis and depends upon the function of both bHLH transcription factors, notably Hand2, and homeodomain transcription factors, including Phox2b. Here, we define a 1007bp *cis*-regulatory element 5' of the *Hand1* gene sufficient to drive reporter expression within the sympathetic chain of transgenic mice. Comparative genomic analyses uncovered evolutionarily conserved consensus-binding sites within this element, which chromatin immunoprecipitation and electrophoretic mobility shift assays confirm are bound by Hand2 and Phox2b. Mutational analyses revealed that the conserved Phox2 and E-box binding sites are necessary for proper *cis*-regulatory element activity, and expression analyses on both *Hand2* conditionally null and hypomorphic backgrounds demonstrate that *Hand2* is required for reporter activation in a gene dosage-dependent manner. We demonstrate that Hand2 and Hand1 differentially bind the E-boxes in this *cis*-regulatory element, establishing molecular differences between these two factors. Finally, we demonstrate that Hand1 is dispensable for normal Tyrosine Hydroxylase (TH) and *Dopamine β-Hydroxylase* (DBH) expression in sympathetic neurons, even when *Hand2* gene dosage is concurrently reduced by half. Together, these data define a tissue-specific *Hand1* *cis*-regulatory element controlled by two factors essential for the development of the sympathetic nervous system and provide *in vivo* regulatory evidence to support previous findings that Hand2, rather than Hand1, is predominantly responsible for regulating TH, DBH, and *Hand1* expression in developing sympathetic neurons.

Keywords

Hand1; Hand2; Phox2b; sympathetic nervous system; neural crest; mouse

*Corresponding Author Fax: 317-278-5413, tfirulli@iupui.edu.

Conflict of Interest: None

Introduction

All neuronal cell types share a broad developmental program, whereby basic-helix-loop-helix (bHLH) transcription factors, cooperatively with other factors, orchestrate the progressive specification of neuronal progenitors (Bertrand et al., 2002, Howard, 2005).

The paired-like homeodomain transcription factor Phox2b is required to define the Sympathetic Nervous System (SNS) differentiation program. As SNS precursor cells differentiate into Sympathetic Neurons (SN), the bHLH protein *Hand2* is upregulated in a Phox2b-dependent manner (Howard et al., 2000). The Hand2-related bHLH factor *Hand1* is then upregulated in a Hand2-dependent manner (Morikawa et al., 2007). Collectively, Phox and Hand factors drive expression of the norepinephrine biosynthetic enzyme *DBH* (Pattyn et al., 1999, Rychlik et al., 2003, Xu et al., 2003).

Hand2 loss-of-function studies demonstrate its requirement for SN differentiation (Howard et al., 1999; Lucas et al., 2006, Morikawa et al., 2007, Hendershot et al., 2008) whereas *Hand2* gain-of-function directs neural crest cells (NCCs) and parasympathetic ganglia to take on noradrenergic characteristics (Howard et al., 1999, Howard et al., 2000, Muller and Rohrer, 2002, Xu et al., 2003).

Hand1 is expressed in SNs, but no other neuronal subtype (Cserjesi et al., 1995, Morikawa and Cserjesi, 2004). siRNA knockdown experiments in cultured mouse superior cervical ganglion, which express both *Hand1* and *Hand2*, indicate that these factors perform overlapping functions, such as the promotion of cell survival (Doxakis et al., 2008). *Hand1* expression is lost in NCC-specific *Hand2* knockouts (Morikawa et al., 2007). Although *Hand1* expression has not been assessed in *Phox2b* mutants, as *Hand2* expression is dependent upon Phox2b (Howard et al., 2000; Hendershot et al., 2008), *Hand1* expression would likely be absent from *Phox2b* mutant SNs as well. Because it is Hand2-dependent, it is unclear whether Hand1 could functionally compensate for a loss of Hand2 in the SNS; however, *Hand2* ablation in differentiated SNs, which express *Hand1*, results in defective SNs (Schmidt et al., 2009), suggesting Hand2 is not redundant with Hand1.

Here, we investigate the regulatory and functional relationship between *Hand1* and *Hand2* in developing SNS. We define a 1007bp Evolutionarily Conserved Region (ECR) 5' to the *Hand1* locus sufficient to drive reporter gene expression throughout the developing and postnatal SG. Through ChIP and EMSA analyses, we demonstrate that Hand2 and Phox2b bind to evolutionarily conserved consensus sites within this ECR. Additionally, we demonstrate that Hand2 and Phox2b are necessary for *Hand1* transcriptional regulation, and that transcriptional regulation is sensitive to *Hand2* gene dosage. We demonstrate that, although Hand2 and Hand1 interact with Phox2b identically *in vitro*, Hand1 and Hand2 display different binding affinities for the conserved E-boxes within the *Hand1* SG enhancer. Finally, we demonstrate that TH and DBH protein expression within SNs is unperturbed by a loss of *Hand1* function, either alone or on a *Hand2* heterozygous background. Together, these data define a novel SNS-transcriptional module with which to model interactions between the transcription factors that regulate the SNS-specific developmental program. These data provide the first *in vivo* insights into cooperative Hand2 and Phox2b regulation of downstream genes in the SNS, and shows a true distinction between Hand1 and Hand2 function during SNS development.

Materials and Methods

Bioinformatics

All sequences were obtained from Ensembl (<http://www.ensembl.org>) via BLASTN analyses using the mouse *Hand1* sequence as a point of reference. Synteny to the *Hand1* locus was validated for all conserved non-coding sequences. mVISTA alignment, PATTERNMATCH and CLUSTALW analyses were performed on the following web sites: (<http://genome.lbl.gov/vista/index.shtml> and <http://workbench.sdsc.edu>).

Cloning

Genomic DNA flanking the *Hand1* locus was isolated and used to generate reporter constructs corresponding to (−9559bp - −7712bp) common to *Constructs #1, #3, #4, #6*, and in truncated form, *#5*, (+4300bp - +8448bp) common to *Constructs #1* and *#3*, and (−7570bp - +294bp) common to *Constructs #1* and *#2*. Sequencing validated all genomic regions. For *Constructs #3- #6* an *Hsp68* basal promoter was used.

To generate *Constructs #6* and *#7*, point mutagenesis was performed using the QuikChange® Site-Directed Mutagenesis Kit (Stratagene) according to manufacturer's instructions with the following primers and their reverse complements: Phox2mut: 5'-TCTGTGATTTTATGGCAGAGGAGAGCAGGCAGCGCGCGCGTTCTGCTCTGT TTTCTG-GGACTTTTCCTTTC-3'; Ebox1mut: 5'-CTGTGCTTGTAACTCTGGTGTTCGGTTAGCTTGTTCACACTCACAGCTGAAATTTAA A-3'; Ebox2mut: 5'-ATTTAAACAACA AAAAGCACGCGTGTGGACAGAAGCTGAGAAAGACACTCG-3'; and Ebox3mut: 5'-CGGGATAGGAGGAGGGTTCACCCCTCTCCTAGCCCC-3'. Mutagenized base pairs are in bold font.

To generate a FLAG-PHOX2b, PCR was used to flank human *Phox2b* with *Sall* sites. This cDNA was subsequently cloned into the pCS2+FLAG expression construct (Vincentz et al., 2008).

Transgenic Mice

The Indiana University Transgenic and Knock-Out Mouse Core generated all transgenic mice. Yolk sac DNA was used to assess transgene integration using the following primer pairs: *Constructs #1* and *#2*- (5'-TTTGGACGTCTGAACCCTTC-3') and (5'-CGGAAACCAGGCAAAGCGCC-3'); *Constructs #3, #4* and *#6*- (5'-ATTGTCGACCCTAAATCCCC-3') and (5'-AGCACAGGCTCAAAGTTGC-3'); *Construct #5*- (5'-CCTAACACGGGATAGGAGGA-3') and (5'-AGCACAGGCTCAAAGTTGC-3').

Genotyping the *Hand1^{tm1Eno}* and *Hand1^{tm2Eno}* (Firulli et al., 1998, McFadden et al., 2005), *Hand2^{tm1Cse}* and *Hand2^{tm1Eno}*, (Srivastava et al., 1997, Morikawa et al., 2007), and *Wnt1-Cre* (Danielian et al., 1998) alleles have previously been described. Embryos of either sex were used for analyses. *Hand1* conditional mice were a generous gift from Eric Olson (UT Southwestern). *Hand2* conditional mice were graciously provided by Peter Cserjesi.

X-gal staining and histology

X-gal staining was performed as previously described (Firulli et al., 1998). If stained embryos were to be sectioned and processed for immunohistochemistry, they were fixed both pre- and post-staining in 10% neutral buffered formalin, rather than, respectively, 2% paraformaldehyde-0.2% glutaraldehyde and 4% paraformaldehyde.

Chromatin immunoprecipitation (ChIP)

SK-N-BE(2) cells were transfected using Fugene HD (Roche) at a ratio of 7:2. Following 48 hrs of culture, cells were harvested and processed as previously described (Holler et al., 2010). Equal amounts of protein were immunoprecipitated overnight at 4°C with 50µL of either α-FLAG- or α-Myc-conjugated agarose beads (Sigma). Eluted immunoprecipitated DNA was diluted in ddH₂O and 5µL of each dilution was used for PCR. As a control, 200µL of cross-linked, sheared cell lysate was subjected to reverse crosslinking, proteinase K treatment, and RNase treatment. A dilution series, spanning 10ng – 1 × 10⁻⁶ng at 10-fold intervals was used to generate a standard curve. ChIP primer pairs were as follows:

Ebox1(F): 5'-CCTCAGCATTGTTGTAACCTCTC-3', Ebox1(R): 5'-GCCATTCAACTGACATGTTTTT-3'; Ebox2(F): 5'-TCCAGGTTATCATCATCTGTCA-3', Ebox2(R): 5'-CAAGTGTCTCTCCAGCCAT-3'; Ebox3(F): 5'-CAATCTGACGAAAATGTTAGG-3', Ebox3(R): 5'-CTCTCTGAGCCTGGAGGAGA-3'; Phox2(F): 5'-TTTATGGCAGGGGAGAAGAG-3', Phox2(R): 5'-GAGAACAGAAGGGAAAGCCC-3'; DBH(F): 5'-CCCACTGATGACGTCCATGT-3', DBH(R): 5'-TGAATGGGGTGGGTCCAG-3'; and GAPDH(F): 5'-CTGCACCACCAACTGCTTAG-3', GAPDH(R): 5'-CAGTGAGCTTCCCGTTCAG-3'.

Quantification of genomic DNA precipitates was performed in a LightCycler 480 II (Roche) using LightCycler FastStart DNA Master SYBR Green I under the following amplification parameters: 95°C, 10 sec, 53°C: 30 sec, and 72°C 20 sec for 45 cycles. Amplicons were verified through dissociation curve analyses. Equivalent DNA concentration was determined based on critical threshold (Ct) measurements, or changes in fluorescence per PCR cycle number at a given threshold. Using Abs/Quant 2nd Derivative Max analyses in the LightCycler Software release 1.5.0, standard curves were generated for each primer set using the Ct values of the genomic DNA dilution series. From these standard curves, equivalent concentrations were calculated for each coimmunoprecipitated sample. Values are represented as equivalent to an amount of standard genomic DNA.

Electrophoretic Mobility Shift Assay (EMSA)

EMSAs were performed as previously described (Trochet et al., 2005, Firulli et al., 2007), using the following oligos annealed to their complements: Phox2, 5'-GCAGGCAATTAGATTAATTTCTGCT-3'; Phox2mut, 5'-GCAGGCAg**gcgcgcgcg**TTCTGCT-3'; Ebox1, 5'-GGTTAGCTTCATCTGTACAGCTGA-3'; Ebox2, 5'-AGCACGCGTCAGGTGAGAAGCTGAG-3'; E-box3, 5'-AGGAGGAGGCATCTGCCCTCCTA-3'. Oligos featuring mutated E-boxes (Ebox1mut, 5'-GGTTAGCTT**gtTCac**TACAGCTGA-3'; Ebox2mut, 5'-AGCACGCGT**gtTGac**AGAAGCTGAG-3'; Ebox3mut, 5'-AGGAGGAG**gtTCac**CCCTCCTA-3) were used as non-specific competitors for Hand factor binding assays. Densitometry analyses were performed using BioRad Quantity One software.

Co-Immunoprecipitation (Co-IP)

Co-immunoprecipitation experiments were performed as previously described (Vincentz et al., 2008).

Immunohistochemistry

Immunohistochemistry was performed as previously described (Vincentz et al., 2008). α-Tubb3 (AbCam), α-TH (AbCam), and α-DBH (Enzo) antibodies were used at dilutions of

1:1000, 1:400, and 1:200, respectively, in combination with biotinylated secondary antibodies, either α -Mouse or α -Rabbit (Vector Laboratories), diluted 1:250, then, in the case of Tubb3, SA-HRP (Vectastain ABC kit, Vector Laboratories) or, in the case of α -TH and α -DBH, SA-Fluorescein (Vector Laboratories) diluted 1:200. HRP color reaction was developed using the DAB Peroxidase Substrate kit (Vector Laboratories) according to manufacturer's protocol.

Results

Hand1-reporter lines recapitulate gene expression in the SNS

We first sought to establish the regulatory relationship between *Hand1* and *Hand2* by locating the *cis*-regulatory element(s) driving *Hand1* gene expression in the SNS. To this end, we identified regions containing ECRs, or genomic sequences greater than 75% conserved over at least 100bp, proximal to the *Hand1* transcription start site. We performed pairwise alignment of the 10Kb of genomic DNA respectively flanking mouse and opossum *Hand1*, identifying 10 discrete ECRs (Figure 1A, red boxes). The genomic regions containing these conserved ECRs were isolated and used to synthesize a β -galactosidase (*lacZ*) reporter construct (Figure 1A). Eight independent transgenic lines expressing this reporter construct were established, and *lacZ* expression was assessed. Of these 8 lines, 5 showed robust X-gal staining within the sympathetic ganglion at E12.5 (Figure 1D, E). Further deletion analyses (*Constructs #2 – #5*), directed by the presence of strong candidate consensus binding sites detailed below (Figure 3A) localized this enhancer to a region spanning -9559 to -8552 from the *Hand1* transcription start site (Figure 1A and F–M). Detailed spatiotemporal characterization of two independent transgenic lines expressing *Construct #1*, the full-length *Hand1* reporter, revealed that, similar to the *Hand1^{lacZ}* knock-in allele, expression in the sympathetic trunk in both transgenic lines was first detectable at E10.5 (Figure 2A–C) and persisted postnatally to at least P21 (Figure 2G–I).

Expression was also detected in the umbilicus, the outer curvature of the progress zone of the limb, and a ventro-medial region of the neural tube at E10.5, and, perinatally, in the gastrointestinal tract. Although consistent among all five expressing lines, *Hand1* is not endogenously expressed within any of these domains (Cserjesi et al., 1995, Barnes et al., 2010), and we conclude that this expression is artifactual. This aberrant expression is likely due either to the absence of a repressor element located outside of *Construct #1*, or to the integration of a high copy number of reporter transgenes, which may, through competitive binding, alter the transcriptional profile of a cell. Fortunately, these artifactual expression domains provided a convenient internal control for subsequent mutational analyses, identifying F0 embryos in which reporter transgenes have integrated into transcriptionally active loci.

Phox2b and Hand2 bind to evolutionarily conserved sites within the minimal Hand1 SG enhancer

To identify transcription factors that might regulate *Hand1* expression in the SNS, we searched for transcription factor binding sites that have been fixed in the *Hand1* SG enhancer across evolution. Local alignments of the conserved ECRs corresponding to the 1007bp minimal *Hand1* SG enhancer contained in *Construct #5* in mammalian species, using the CLUSTALW multiple sequence alignment program, uncovered one Phox2 binding site (Figure 3A, highlighted in black) and two E-box binding sites (Figure 3A, highlighted in gray) conserved among all mammalian orders, and a third E-box binding site (Figure 3A, highlighted in gray) conserved among placentals.

To determine whether Phox2b and Hand2 bind these sites, respectively, we first performed ChIP assays. As commercially available antibodies for Phox2b and Hand2 are unreliable, and obtaining enough nuclear material from isolated embryonic sympathetic ganglia would be impractical, we performed our ChIP analyses using FLAG-epitope tagged variants of these transcription factors in a cell culture system. FLAG+Phox2b or FLAG+Hand2 mammalian expression constructs were transfected into human SK-N-BE(2) neuroblastoma cells. Following shearing and immunoprecipitation, relative amounts of precipitated DNA were quantified. Sheared genomic DNA was used to generate a standard curve for each set of amplicons. *GAPDH*, a housekeeping gene not regulated by either Phox2b or Hand2 factors, was used as a negative control, whereas the *DBH* promoter, to which both Phox2b and Hand2 directly bind (Rychlik et al., 2005, Doxakis et al., 2008), served as a positive control. Immunoprecipitation of FLAG+Phox2b cross-linked complexes using α -FLAG antibody resulted in significant enrichment of the *Phox2* site-containing region compared to our negative control, similar to that observed for *DBH* (Figure 3B). Similarly, immunoprecipitation of FLAG+Hand2 cross-linked complexes using α -FLAG antibody produced significant enrichment of all three E-box-containing regions, as well as the *DBH* promoter, when compared to control (Figure 3C). Further ChIP analyses performed using a binding-deficient Hand2 variant (Myc+Hand2 Δ B; McFadden et al., 2002) produced no significant enrichment (data not shown), confirming the specificity of this assay.

Our ChIP analyses suggested that Phox2b bound to its putative binding site in the *Hand1* SG enhancer. However, immunoprecipitation of FLAG+Phox2b cross-linked complexes produced a slight, but nonetheless detectable, enrichment of our negative GAPDH control (Figure 3B). We therefore further validated these results and confirmed specific binding of Phox2b to the Phox2 binding site through EMSA. *In vitro* translated FLAG+Phox2b formed complexes with radiolabeled oligos replicating the Phox2 site identified in the *Hand1* SG enhancer (Figure 3D). These complexes were specifically competed by an excess of unlabeled oligo, but not by unlabeled competitor in which the Phox2 site had been mutated. Additional EMSAs confirmed that FLAG+Phox2b does not bind to these mutagenized oligos (data not shown). EMSAs were further used to assess Hand2 binding to the three conserved E-boxes in the *Hand1* SG enhancer. *In vitro* translated Myc-tagged Hand2 bound as a heterodimer with Myc-tagged E12 weakly, but specifically, to E-box1 (Figure 3F), and, more robustly, to E-box3 (Figure 3H) but failed to detectably bind to E-box2 (Figure 3G). Hand2 homodimers did not bind at detectable levels to any of the three E-boxes assayed (Figure 3F–H). As a whole, these results demonstrate that Phox2b and Hand2 bind to evolutionarily conserved sites within the *Hand1* SG enhancer.

The Phox2 consensus-binding site within the Hand1 SG enhancer is necessary for sympathetic ganglia expression

We then assessed whether Phox2b is required for *Hand1* SG enhancer transactivation *in vivo*. Sympathetic neurons undergo widespread apoptosis in *Phox2b*-null embryos (Brunet and Pattyn, 2002) making it impractical to test whether *Hand1* SG enhancer activity would be altered on this genetic background. We therefore tested whether the Phox2 *cis*-binding element is required for *Hand1* SNS gene expression. As demonstrated via EMSA, mutation of the Phox2 site eliminates Phox2b binding (Figure 4B). We therefore point mutagenized, in an identical manner, the Phox2 binding site in *Construct #4* (Figure 4A), which spans –9559 to –7712 of the *Hand1* transcription start site (Figure 1A, J and K). Zero of 7 transgenic embryos generated using this mutagenized construct showed transgene expression in the SG at E11.5 (Figure 4B–D) although artifactual ectopic expression was observed in the limb and neural tube (arrow, Figure 4B, 4E, 4H, and 4K) of three of these transgenics, suggesting that the integration locus was conducive to transcriptional activity.

We conclude that the conserved *Phox2* cis-binding element in the minimal *Hand1* enhancer is necessary for *Hand1* SG expression.

Hand2 is necessary for SG expression of the Hand1 reporter

Hand2 ablation in SNS precursors causes an absence of *Hand1* expression, establishing that *Hand2* lies upstream of *Hand1* during SG differentiation (Morikawa et al., 2007). To test whether *Hand2* is necessary for *Hand1* gene expression via its DNA binding to the SG enhancer (Figures 3C, F, and H), we bred *Construct #1* mice onto a *Hand2* NCC-specific knockout background, incorporating the *Hand2* conditional allele (Morikawa et al., 2007), and the *Wnt1-Cre* driver (Danielian et al., 1998). Importantly, this *Hand2* conditional allele is reported to be hypomorphic, and *Hand2*^{fv/-} mice display cleft palate resulting from defective cranial NCC differentiation (Morikawa et al., 2007). qRT-PCR indicates that the transcriptional output from a single copy of this hypomorphic allele generates 35% of total wild-type *Hand2* expression (P. Cserjesi, personal communication). In most E11.5 *Hand2* conditional knockout embryos examined, *Construct #1* expression was undetectable (n = 4/6; Figure 4K–M). The remaining conditional knockout embryos examined displayed markedly reduced reporter expression. Interestingly, *Construct #1* expression was consistently reduced in *Hand2*^{fv/-} hypomorphs (n = 9/10; Figure 4H–J), compared to controls (Figure 4E–G). Assessing cell morphology, examination of embryo tissue sections suggest that the *Hand2*^{fv/-} hypomorphic SG contains both *Construct #1*-expressing and non-expressing cells. Immunohistochemistry for the neuronal marker Hu and the cell proliferation marker phospho-histone H3 at E10.5 failed to detect a significant difference between cell number or proliferation index in SG of *Hand2*^{fv/-} and *Hand2*^{fv/+} embryos (data not shown), further suggesting that the diminished *Construct #1* expression seen in *Hand2*^{fv/-} hypomorphs reflects reduced gene expression, rather than a loss of SG cells.

We therefore sought to confirm whether the *Hand1* SG enhancer displays mosaic expression in *Hand2*^{fv/-} hypomorphic SG. E11.5 *Construct #1*-positive, *Hand2* mutant embryos were sectioned and stained for the pan-neuronal marker Tubulin β -III (Tubb3). Tubb3 immunohistochemistry demonstrated that, as expected, control SG display almost uniform *Hand1* reporter expression (Figure 4F, G), whereas *Hand2* conditional knockout SG are devoid of *Hand1* reporter expression (Figure 4L, M). *Hand2*^{fv/-} hypomorphic SG, however, presented as a mix of both *Construct #1*-positive and *Construct #1*-negative neurons (Figure 4I, J). Together, these data show that the *Hand1* SG enhancer is regulated by *Hand2* in a gene dosage-dependent manner.

Although these results demonstrate that *Hand1* enhancer cis-activity is dependent upon *Hand2*, it cannot be ruled out that *Hand2* regulation is indirect. Sympathetic neurons, in the absence of *Hand2*, may simply differentiate into a neuronal cell type that does not express *Hand1*. To exclude this possibility, we mutagenized the three conserved E-boxes in the *Hand1* SG enhancer in a manner identical to that detailed in the EMSA analyses described previously (Figure 4N). Of the 7 transgenic mice generated with this mutagenized construct, 4 exhibited no significant expression within the SG. Interestingly, 3 of 7 E11.5 transgenic embryos generated showed weaker reporter expression in the SG (Figure 4O–S); however, unlike the wild-type *Hand1* SG enhancer, expression in these transgenic lines was not uniformly observed throughout the cells of the sympathetic chain. Indeed, reporter expression was limited to a small subpopulation of SNs within ganglia at or rostral to the level of the cardiac outflow tract (OFT; Figure 4P, Q). Caudal to the OFT, reporter gene expression in these three lines was undetectable. Collectively, SG reporter expression from *Construct #7* constitutes a markedly reduced expression domain compared to wild-type reporter transgenics, suggesting that, like the *Phox2* binding site, the conserved E-boxes in the minimal *Hand1* enhancer are necessary for proper *Hand1* SG enhancer cis-activity.

Hand1 and Hand2 display unique binding specificities for consensus binding sites in the Hand1 SG enhancer

The observation that *Hand1* SG-specific *cis*-element activity is dependent upon E-boxes is not surprising; however, the finding that the *Hand1* SG enhancer displays reduced activity on a *Hand2* hypomorphic background is surprising. As Hand1 and Hand2 have been shown to function cooperatively in other developmental contexts (McFadden et al., 2005, Barbosa et al., 2007), including the survival of cultured neonatal sympathetic neurons (Doxakis et al., 2008), one would predict that an autoregulatory mechanism would allow *Hand1* to maintain wild-type expression levels when Hand2 function is compromised. Although a significant body of evidence suggests that Hand1 and Hand2 might perform identical functions, the idea that these two factors are functionally distinct is not without precedent (Holler et al., 2010). Previous studies have shown that Phox2a and Hand2 can synergistically transactivate *DBH* (Rychlik et al., 2003, Xu et al., 2003). Additional studies have indicated that, while siRNA-mediated knockdown of Hand2 reduces *DBH* expression in newborn superior cervical ganglion, knockdown of Hand1 fails to produce a similar effect, indicating that these factors may perform unique functions with regard to *DBH* transactivation (Doxakis, 2008). We thus investigated whether Hand2 performs transcriptional functions unique from Hand1. Neither Hand1 nor Hand2 molecularly interact with Phox2a (Xu et al., 2003). However, Hand2 has been shown to molecularly interact with Phox2b in neuroblastoma cells (Reiff et al., 2010); Howard, unpublished results). We hypothesized that if Hand2, but not Hand1, molecularly interacts with Phox2b, this might reflect the unique requirement for Hand2 in developing sympathetic neurons, and we therefore tested, via Co-IP experiments in HEK293 cells, whether Hand1 and Phox2b molecularly interact. As expected, immunoprecipitation of FLAG+Phox2b co-precipitates Myc+Hand2 (Figure 5A). Myc+Hand1 can also be co-precipitated with FLAG+Phox2b (Figure 5A), indicating that both Hand factors can interact with Phox2b.

We then tested, via EMSA, whether Hand1 and Hand2 might, through protein-protein interaction, differentially affect Phox2b DNA binding to its cognate consensus-binding site. *In vitro* translated FLAG+Phox2b was co-synthesized with either Myc+Hand2 or Myc+Hand1 or with an empty pCS2+MT vector. Western Blot verified effective transcription and translation (data not shown). Lysates were incubated with radiolabeled oligos replicating the Phox2 site identified in the *Hand1* SG enhancer. Gel-shift analyses revealed no detectable difference in Phox2b DNA-binding either alone or in the presence of Hand2 or Hand1 (Figure 5B). Together, these results fail to uncover a Phox2b interaction unique to either Hand2 or Hand1.

We therefore assessed Hand2 and Hand1 binding to the conserved E-box binding sites in the *Hand1* SG enhancer to test whether Hand2 and Hand1 possess different DNA binding affinities independent of Phox2b interaction. Like other Twist family bHLH transcription factors, Hand factors function through dimerization, either with other Hand factors, or with E-proteins such as E12. We therefore synthesized Myc+Hand2 or Myc+Hand1 *in vitro*, either alone or co-synthesized with Myc+E12. Myc+E12, transcribed alone, was also included as a control. Western Blot was employed to verify that the peptides were synthesized in equal amounts, and that the intensity of shifted DNA complexes represented differences in DNA binding affinities, as previously established (Firulli et al., 2007; Figure 3E). Densitometry analyses revealed that the ratio of Myc+E12 co-synthesized Myc+Hand2 to Myc+Hand1 was 1.3:1.0. EMSA revealed that, like Hand2, Hand1 does not bind to any of the three E-box-containing oligos at detectable levels as a homodimer (Figure 3F – H). Hand2–E12 heterodimers were found to weakly bind to E-box 1 (Figure 3F); however, Hand1–E12 heterodimers displayed no detectable binding to this E-box. Hand2-E12 binds most robustly to E-box3 (Figure 3H), whereas Hand1-E12 binding to this E-box is comparatively weaker (Figure 3H). Densitometry analyses revealed that Hand2-E12 binding

was 4.9-fold more robust than that of Hand1-E12. E-box2 was bound only by E12 homodimers, and, interestingly, both Hand2 and Hand1 each seem to inhibit formation of this E12 homodimer protein-DNA complex (Figure 3G). Collectively, these data suggest that Hand2-E12 heterodimers display a stronger DNA binding affinity for E-boxes within the *Hand1* SG enhancer than Hand1-E12 heterodimers, a functional difference that may explain both the specific *Hand2* gene dosage requirement for *Hand1* SG enhancer activity and the inability of Hand1 to functionally replace Hand2 and thereby regulate its own transcription in the SG.

Hand1 is dispensable for sympathetic neurogenesis

It has been established that Hand2 is required not only for the initial expression of the norepinephrine biosynthetic enzymes characteristic of noradrenergic neurons (Howard et al., 1999, Howard et al., 2000, Lucas et al., 2006, Morikawa et al., 2007, Hendershot et al., 2008), but that continual Hand2 transcriptional input is required to maintain expression of these factors (Schmidt et al., 2009). We observe that *Hand1* reporter expression is diminished in the SG of *Hand2* hypomorphs (Figure 4H–J). Additionally, studies using an alternative *Hand2* hypomorphic allele expressing 14% of wild-type *Hand2* mRNA levels report not a reduction in sympathetic neuron cell number, but a general trend toward a decrease in the number of TH expressing cells (Hendershot et al., 2008). These data suggest that expression of specific genes within the SG is sensitive to Hand2 expression levels. If Hand2 and Hand1 are functionally redundant in these neurons, it would follow that Hand1 would contribute to the overall level of Hand factor dosage, and might affect expression of these noradrenergic markers. However, our analyses of the *Hand1* SG enhancer suggests that Hand2 might uniquely regulate genes in the sympathetic neurons. To test the requirement for noradrenergic marker expression during sympathetic neurogenesis, we performed immunohistochemistry upon E11.5 embryos in which *Hand1* function has been specifically ablated in the neural crest and its derivatives. Targeted disruption of *Hand1* causes embryonic lethality prior to specification of sympathetic progenitors (Firulli et al., 1998). We therefore used the *Hand1* conditional allele (McFadden et al., 2005) and the *Wnt1-Cre* driver (Danielian et al., 1998) to disrupt *Hand1* function in the SNS. Immunohistochemistry for TH and DBH protein failed to detect an obvious difference in expression between *Hand1* conditional knockouts (Figure 6C, G) and control embryos (Figure 6A, E). These results indicate that TH and DBH expression is unperturbed by a loss of *Hand1* function. *Hand2* heterozygotes, which have 50% of *Hand2* expression compared with wild-type mice (Hendershot et al., 2008), lack apparent SNS phenotypes (Figure 6B, F). When that genetic output is reduced to 35%, gene expression in the SG is altered (Figure 4H–J). Thus, the critical threshold for *Hand2* dosage appears to lie between 35% and 50% of wild-type dosage. We reasoned that, if *Hand1* does indeed contribute to the overall Hand factor gene dosage requirement, this contribution might only become evident on a sensitized *Hand2* genetic background. We therefore conditionally ablated *Hand1* on a *Hand2*^{+/-} background, and examined TH and DBH protein expression at E11.5. TH and DBH expression was not appreciably altered in *Hand1*^{flx/-}; *Hand2*^{+/-}; *Wnt1-Cre*(+) embryos (Figure 6D, H) compared with controls (Figure 6A, E) and *Hand2* heterozygotes (Figure 6B, F). We conclude that *Hand1* function is not required to maintain noradrenergic marker expression in developing sympathetic neurons, and that Hand2 is thus uniquely required to perform this function.

Discussion

Here, we investigate whether Hand1 and Hand2 perform unique functions in the developing SNS, or whether their respective functions are governed by their sequential expression patterns and describe a 1Kb evolutionarily conserved *cis*-regulatory element 5' to the *Hand1*

transcriptional start site that is sufficient to drive gene expression within the SNS. This enhancer initiates expression at E10.5, consistent with what is observed both for *Hand1* mRNA and in *Hand1^{lacZ}* mice, and is expressed postnatally. Within this *cis*-regulatory element lie several evolutionarily conserved consensus-binding sites, including a Phox2 binding site and three E-box binding sites, which are bound by the transcription factors Phox2b and Hand2, respectively. We show that these Phox2 and E-box binding sites are necessary for activity of this *cis*-regulatory element, indicating that Phox2b and Hand2 are direct upstream regulators of *Hand1*. However, we also show that these E-box elements are uniquely responsive to *Hand2* gene dosage, indicating that Hand1 cannot autoregulate in a manner that maintains its expression at wild-type levels when Hand2 function is diminished (Figure 4E–M). We attribute this to a lower affinity of Hand1-E12 heterodimers to bind the conserved E-boxes within its own enhancer, in contrast to Hand2–E12 heterodimers, which bind two of these E-boxes efficiently in EMSA (Figure 3F, H). As noradrenergic marker expression is unperturbed in *Hand1* null SG, even on a sensitized *Hand2* heterozygous background, we conclude that transcriptional properties unique to Hand2 render it uniquely necessary for sympathetic neurogenesis.

Interestingly, the *Hand1* SG enhancer is prone to ectopic lacZ activity within the neural tube and limb, locations in which *Hand1* is not endogenously expressed. This finding could reflect the loss of a critical *Hand1* repressor element not present within the ECR or simply be a frequent artifact of transgene integration. Regardless of mechanism, this artifactual expression became a powerful tool to fully rule out the possibility that the loss of *Hand1*-SG enhancer activity via *Phox2 cis*-element mutation results from transgene integration into transcriptionally dead regions of the genome. Indeed, ChIP and EMSA analyses show that Phox2b directly binds to the conserved Phox2 element (Figure 3D, 6B). Combinatorially, the observations that Hand2 binds E-box sequences within the *Hand1* SNS element that are required for its proper expression, and that transgene expression is lost within *Hand2* conditionally null mice, render it equally clear that Hand2 also directly regulates *Hand1*, supporting previous data (Morikawa et al., 2007). Additionally, while not necessary for SNS expression, loss of the 3' regions of the *Hand1* reporter (present in *Constructs #1* and *#3*; Figure 1A, D, E, H, and I) reduces the frequency of reporter-expressing transient transgenics. This may indicate that the 3' regions contain elements that promote euchromatin in stability, better enabling Hand2, Phox2b, and other putative *trans*-activators to access the *Hand1* minimal regulatory element.

It has been established that the specification and differentiation of NCC-derived neurons hinges upon the transcriptional activity of both bHLH transcription factors, such as Hand2, and homeodomain transcription factors, such as Phox2b (Howard, 2005). The molecular programs that govern sympathetic neuron differentiation do not follow a stepwise linear progression, whereby transcription factors sequentially upregulate one another's expression and ultimately upregulate markers of SNS differentiation, but rather an intricate transcriptional network, in which these factors not only regulate each other's expression, but also molecularly interact to regulate each other's transcriptional activity, cumulatively upregulating noradrenergic biosynthetic enzymes. Studies exploring transcriptional regulation of one of these enzymes, *DBH*, have revealed that complex transcriptional and protein-protein interactions between Hand2 and Phox2a *in vitro* enable these two factors to synergistically regulate *DBH* transcription (Rychlik et al., 2003, Xu et al., 2003). Here, we report that Phox2b and Hand2 bind to consensus binding sites within the *Hand1* SG enhancer, and that this enhancer is dependent upon both Hand2 and Phox2b function *in vivo*. Moreover, epitope-tagged Hand2 and Phox2b physically interact when coexpressed in cultured cells (Reiff et al., 2010), (Figure 5A). We provide evidence that Phox2b and Hand1 similarly interact (Figure 5A), supporting previous findings that Phox and Hand factors play an essential integrated role in implementing the sympathetic neuronal program (Howard et

al., 2000, Hendershot et al., 2007). It is still unclear whether these factors function as part of a larger, multimeric transcriptional complex containing additional essential factors, for example, *Insm1* (Rychlik et al., 2003, Xu et al., 2003). Clearly neither *Phox2b* nor *Hand2* alone is sufficient to drive *Hand1* SG expression. The simplest explanation for this result is that both factors form a core complex that drives the SG program; however we cannot rule out that other factors, not identified in this study, are also required. Further characterization of this *cis*-regulatory element is needed to yield insight into the protein-protein interactions that govern its activity. Indeed, given the restricted nature of neuronal *Hand1* expression, this *cis*-regulatory element provides a powerful tool with which to explore the transcriptional mechanisms specifically driving sympathetic neuron differentiation.

Previous studies have proposed that *Hand2* gene dosage is important for proper SG development (Howard et al., 1999, Hendershot et al., 2008). These studies are the first to definitively demonstrate a gene dosage requirement for *Hand2* in SG-specific gene expression *in vivo* and that *Hand1* is directly sensitive to *Hand2*-dosage. As *Hand2* is known to regulate *DBH* in the peripheral nervous system, these findings could have broader implications for norepinephrine biosynthetic programs during both development and disease.

As evidenced by the differing expression of the *Hand2*-responsive SG reporter described in this paper, among cells of the sympathetic chain, the cells of the *Hand2* hypomorphic SNS are molecularly distinct. In contrast to *Hand2* wild-type or *Hand2* null sympathetic neurons, which either uniformly express or uniformly fail to express *Hand1*, *Hand2* hypomorphs display SGs that are a mixture of both *Hand1*-SG reporter expression-positive and reporter expression-negative neurons. Differing responses to neurotrophic signals mediated, in part, by the nerve growth factor receptor *TrkA*, have been shown to be critical to sympathetic neuron cell survival and, by extension, the competitive cellular mechanism by which the peripheral nervous system matures (Deppmann et al., 2008). Cells expressing high levels of *TrkA* survive, while those expressing lower levels undergo apoptosis (Deppmann et al., 2008). Studies in sympathetic neuronal explants indicate that *TrkA* expression levels are directly regulated by Hand factors (Doxakis et al., 2008). It would therefore be of interest to determine whether neurotrophic responses are processed differentially by the cells of the *Hand2*-hypomorphic SG, and whether the *Hand2*-responsive SG reporter described here correlates with cells expressing high levels of these neurotrophic factor receptors, which will ultimately survive the developmental process.

The cumulative contributions of *Hand1* and *Hand2* are critical in certain developmental contexts (McFadden et al., 2005). *In vitro* studies have established that *Hand1* and *Hand2* can function similarly to promote SG cell survival, but may perform distinct functions in terms of transcriptionally regulating the noradrenergic gene program (Doxakis et al., 2008). The overlapping and distinct functions of *Hand1* and *Hand2* in an *in vivo* context are not clear. In this study, we establish that proper expression of *Hand1* through the novel SG enhancer requires a critical threshold of *Hand2* function, supporting the interpretations of previous reports. Our data suggest that, despite their similarities, *Hand1* cannot in fact functionally compensate for *Hand2* within the SNS *in vivo*, and that distinct properties of these two factors render *Hand1* dispensable and *Hand2* critical in this developmental context. A possible confirmation of this hypothesis is observed in *Hand2^{Hand1}* knock-in mice, in which a *Hand1* cDNA has been targeted to the *Hand2* locus. Homozygous *Hand2^{Hand1/Hand1}* embryos die at E12.5 to 13.5. Although SG marker gene expression has not been assessed in these mutants, they establish that *Hand1* cannot replace *Hand2* past mid-gestation (D. Srivastava and H. Yamagishi, personal communication). Collectively, these studies not only provide valuable insight into the molecular interactions between *Phox2* and Hand factors during sympathetic neurogenesis, but also draw the first concrete

functional distinction between *Hand1* and *Hand2* factors during sympathetic neuron differentiation.

Acknowledgments

We thank Danny Carney for technical assistance. We thank the Herman B Wells Center Cardiac Developmental Biology Group for helpful discussions. Infrastructural support at the Herman B Wells Center is partially supported by the Riley Children's Foundation and Division of Pediatric Cardiology. Grant support for this work was provided by: NIH RO1HL061677-12 and 1P01HL085098-05(ABF)and R01NS040644 (MJH)

References

- Barbosa AC, Funato N, Chapman S, McKee MD, Richardson JA, Olson EN, Yanagisawa H. Hand transcription factors cooperatively regulate development of the distal midline mesenchyme. *Dev Biol.* 2007; 310:154–168. [PubMed: 17764670]
- Barnes RM, Firulli BA, Conway SJ, Vincentz JW, Firulli AB. Analysis of the Hand1 cell lineage reveals novel contributions to cardiovascular, neural crest, extra-embryonic, and lateral mesoderm derivatives. *Dev Dyn.* 2010; 239:3086–3097. [PubMed: 20882677]
- Bertrand N, Castro DS, Guillemot F. Proneural genes and the specification of neural cell types. *Nature reviews Neuroscience.* 2002; 3:517–530.
- Brunet JF, Pattyn A. Phox2 genes - from patterning to connectivity. *Current opinion in genetics & development.* 2002; 12:435–440. [PubMed: 12100889]
- Cserjesi P, Brown D, Lyons GE, Olson EN. Expression of the novel basic helix-loop-helix gene eHAND in neural crest derivatives and extraembryonic membranes during mouse development. *Dev Biol.* 1995; 170:664–678. [PubMed: 7649392]
- Danielian PS, Muccino D, Rowitch DH, Michael SK, McMahon AP. Modification of gene activity in mouse embryos in utero by a tamoxifen-inducible form of Cre recombinase. *Curr Biol.* 1998; 8:1323–1326. [PubMed: 9843687]
- Deppmann CD, Mihalas S, Sharma N, Lonze BE, Niebur E, Ginty DD. A model for neuronal competition during development. *Science.* 2008; 320:369–373. [PubMed: 18323418]
- Doxakis E, Howard L, Rohrer H, Davies AM. HAND transcription factors are required for neonatal sympathetic neuron survival. *EMBO reports.* 2008; 9:1041–1047. [PubMed: 18724272]
- Firulli AB, McFadden DG, Lin Q, Srivastava D, Olson EN. Heart and extra-embryonic mesodermal defects in mouse embryos lacking the bHLH transcription factor Hand1. *Nat Genet.* 1998; 18:266–270. [PubMed: 9500550]
- Firulli BA, Redick BA, Conway SJ, Firulli AB. Mutations within helix I of Twist1 result in distinct limb defects and variation of DNA binding affinities. *J Biol Chem.* 2007; 282:27536–27546. [PubMed: 17652084]
- Hendershot TJ, Liu H, Clouthier DE, Shepherd IT, Coppola E, Studer M, Firulli AB, Pittman DL, Howard MJ. Conditional deletion of Hand2 reveals critical functions in neurogenesis and cell type-specific gene expression for development of neural crest-derived noradrenergic sympathetic ganglion neurons. *Developmental biology.* 2008; 319:179–191. [PubMed: 18501887]
- Hendershot TJ, Liu H, Sarkar AA, Giovannucci DR, Clouthier DE, Abe M, Howard MJ. Expression of Hand2 is sufficient for neurogenesis and cell type-specific gene expression in the enteric nervous system. *Dev Dyn.* 2007; 236:93–105. [PubMed: 17075884]
- Holler KL, Hendershot TJ, Troy SE, Vincentz JW, Firulli AB, Howard MJ. Targeted deletion of Hand2 in cardiac neural crest-derived cells influences cardiac gene expression and outflow tract development. *Dev Biol.* 2010; 341:291–304. [PubMed: 20144608]
- Howard M, Foster DN, Cserjesi P. Expression of HAND gene products may be sufficient for the differentiation of avian neural crest-derived cells into catecholaminergic neurons in culture. *Developmental biology.* 1999; 215:62–77. [PubMed: 10525350]
- Howard MJ. Mechanisms and perspectives on differentiation of autonomic neurons. *Developmental biology.* 2005; 277:271–286. [PubMed: 15617674]

- Howard MJ, Stanke M, Schneider C, Wu X, Rohrer H. The transcription factor dHAND is a downstream effector of BMPs in sympathetic neuron specification. *Development*. 2000; 127:4073–4081. [PubMed: 10952904]
- Lucas ME, Muller F, Rudiger R, Henion PD, Rohrer H. The bHLH transcription factor hand2 is essential for noradrenergic differentiation of sympathetic neurons. *Development*. 2006; 133:4015–4024. [PubMed: 17008447]
- McFadden DG, Barbosa AC, Richardson JA, Schneider MD, Srivastava D, Olson EN. The Hand1 and Hand2 transcription factors regulate expansion of the embryonic cardiac ventricles in a gene dosage-dependent manner. *Development*. 2005; 132:189–201. [PubMed: 15576406]
- McFadden DG, McAnally J, Richardson JA, Charite J, Olson EN. Misexpression of dHAND induces ectopic digits in the developing limb bud in the absence of direct DNA binding. *Development*. 2002; 129:3077–3088. [PubMed: 12070084]
- Morikawa Y, Cserjesi P. Extra-embryonic vasculature development is regulated by the transcription factor HAND1. *Development*. 2004; 131:2195–2204. [PubMed: 15073150]
- Morikawa Y, D'Autreaux F, Gershon MD, Cserjesi P. Hand2 determines the noradrenergic phenotype in the mouse sympathetic nervous system. *Dev Biol*. 2007; 307:114–126. [PubMed: 17531968]
- Muller F, Rohrer H. Molecular control of ciliary neuron development: BMPs and downstream transcriptional control in the parasympathetic lineage. *Development*. 2002; 129:5707–5717. [PubMed: 12421710]
- Pattyn A, Morin X, Cremer H, Goridis C, Brunet JF. The homeobox gene Phox2b is essential for the development of autonomic neural crest derivatives. *Nature*. 1999; 399:366–370. [PubMed: 10360575]
- Reiff T, Tsarovina K, Majdazari A, Schmidt M, del Pino I, Rohrer H. Neuroblastoma Phox2b variants stimulate proliferation and dedifferentiation of immature sympathetic neurons. *The Journal of neuroscience : the official journal of the Society for Neuroscience*. 2010; 30:905–915. [PubMed: 20089899]
- Rychlik JL, Gerbasi V, Lewis EJ. The interaction between dHAND and Arix at the dopamine beta-hydroxylase promoter region is independent of direct dHAND binding to DNA. *J Biol Chem*. 2003; 278:49652–49660. [PubMed: 14506227]
- Rychlik JL, Hsieh M, Eiden LE, Lewis EJ. Phox2 and dHAND transcription factors select shared and unique target genes in the noradrenergic cell type. *Journal of molecular neuroscience : MN*. 2005; 27:281–292. [PubMed: 16280598]
- Schmidt M, Lin S, Pape M, Ernsberger U, Stanke M, Kobayashi K, Howard MJ, Rohrer H. The bHLH transcription factor Hand2 is essential for the maintenance of noradrenergic properties in differentiated sympathetic neurons. *Developmental biology*. 2009; 329:191–200. [PubMed: 19254708]
- Srivastava D, Thomas T, Lin Q, Kirby ML, Brown D, Olson EN. Regulation of cardiac mesodermal and neural crest development by the bHLH transcription factor, dHAND. *Nat Genet*. 1997; 16:154–160. [PubMed: 9171826]
- Trochet D, O'Brien LM, Gozal D, Trang H, Nordenskjold A, Laudier B, Svensson PJ, Uhrig S, Cole T, Niemann S, Munnich A, Gaultier C, Lyonnet S, Amiel J. PHOX2B genotype allows for prediction of tumor risk in congenital central hypoventilation syndrome. *American journal of human genetics*. 2005; 76:421–426. [PubMed: 15657873]
- Vincentz JW, Barnes RM, Firulli BA, Conway SJ, Firulli AB. Cooperative interaction of Nkx2.5 and Mef2c transcription factors during heart development. *Dev Dyn*. 2008; 237:3809–3819. [PubMed: 19035347]
- Xu H, Firulli AB, Zhang X, Howard MJ. HAND2 synergistically enhances transcription of dopamine-beta-hydroxylase in the presence of Phox2a. *Dev Biol*. 2003; 262:183–193. [PubMed: 14512028]

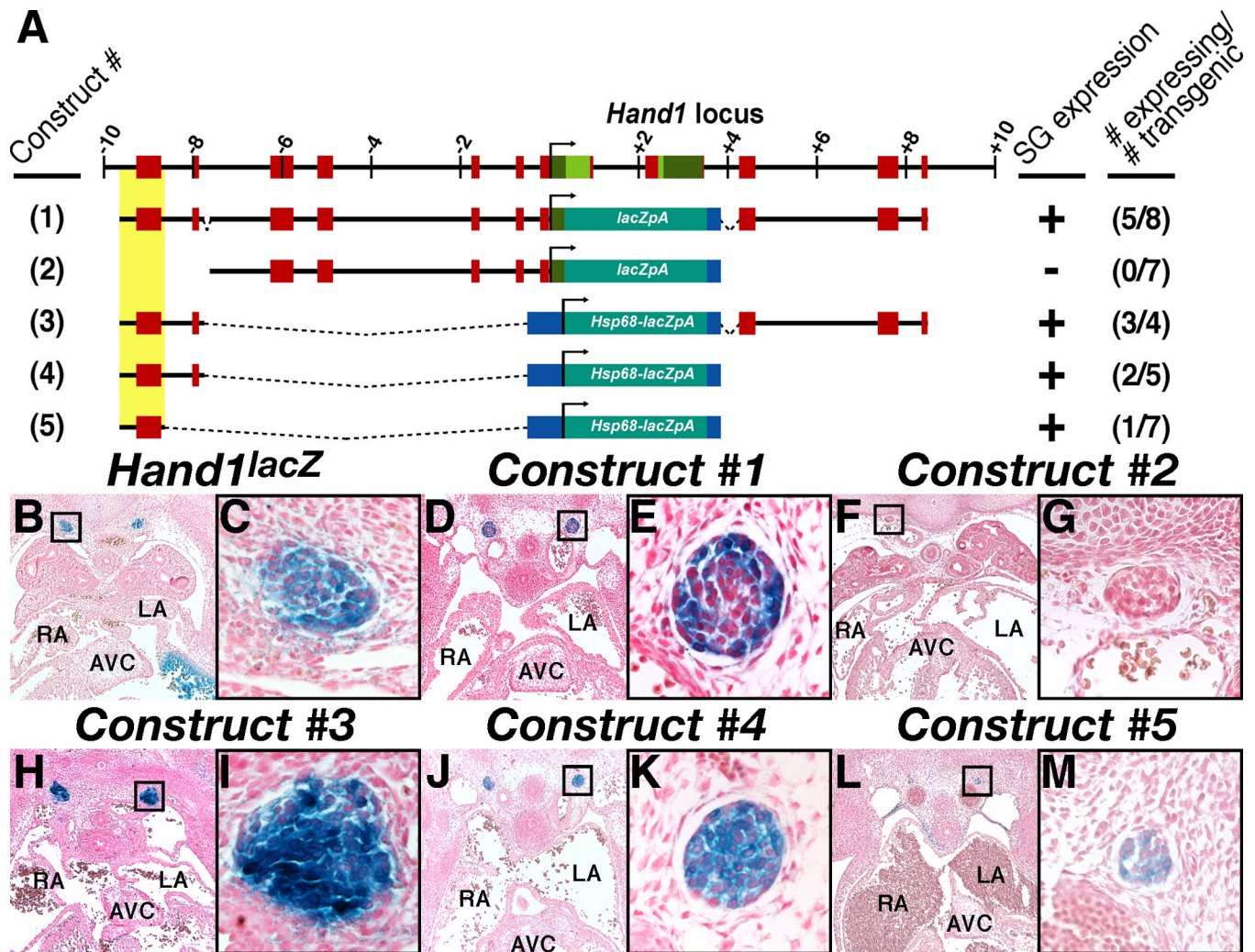


Figure 1. A 1007bp genomic region 5' of *Hand1* is sufficient to drive SN-specific reporter transgene expression

A) Schematic representation of the *Hand1* locus, including 10Kb 5' and 3' of the transcriptional start site and the reporter constructs used in these analyses. Exons, conserved non-coding sequences, and the minimal *Hand1* SG cis-regulatory element are highlighted in green, red, and yellow, respectively. Positive transgenic expressers within the SG, and the total number of transgenic embryos examined are indicated. B-M) Transverse sections of X-gal-stained E12.0–12.5 embryos show robust transgene expression in the SNS of transient transgenics expressing *Constructs* #1 (D, E), #3 (H, I), #4 (J, K), and #5 (L, M), but not #2 (F, G). A section of a stained E12.5 *Hand1*^{lacZ/+} embryo is included for comparison (B, C). High-magnification insets, denoted by boxes in panels B, D, F, H, J, and L, are featured in panels C, E, G, I, K, and M, respectively. AVC – atrioventricular cushions, LA – left atrium, RA – right atrium, SG – sympathetic ganglion.

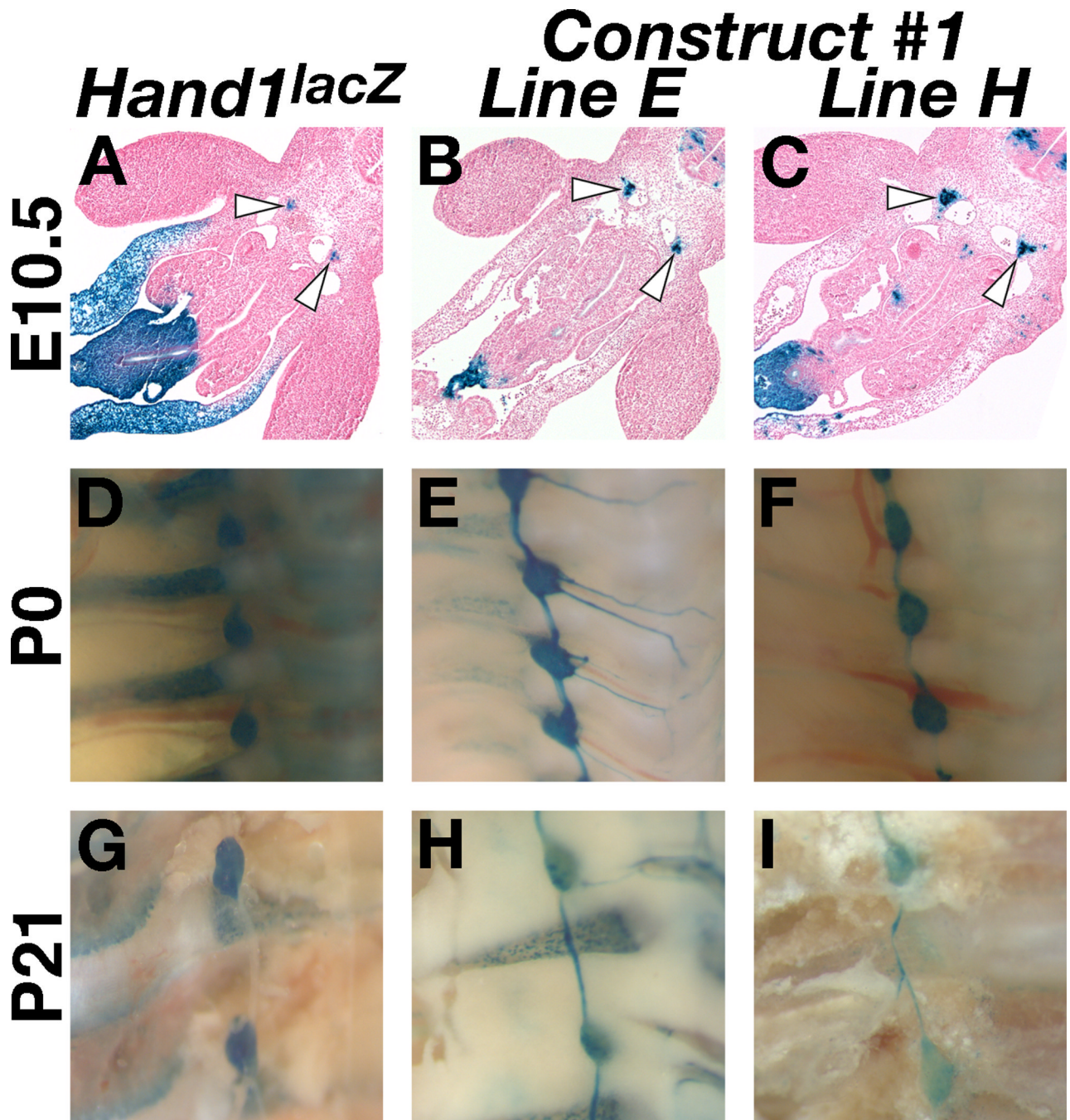


Figure 2. The *Hand1*-reporter transgene recapitulates *Hand1* expression in the SNS both pre- and postnatally

(A–C) Transverse sections of representative X-gal-stained E10.5 embryos from two independent transgenic lines, termed Line E (B) and Line H (C), show robust transgene expression in SNS progenitors (arrowheads), comparable to control *Hand1^{lacZ}* embryos (A). (D–I) Whole mount preparations of X-gal-stained transgenic mice at P0 (E, F), and P21 (H, I) confirm that reporter expression persists in both lines in a comparable manner to that of age-matched *Hand1^{lacZ}* mice (D and G, respectively).

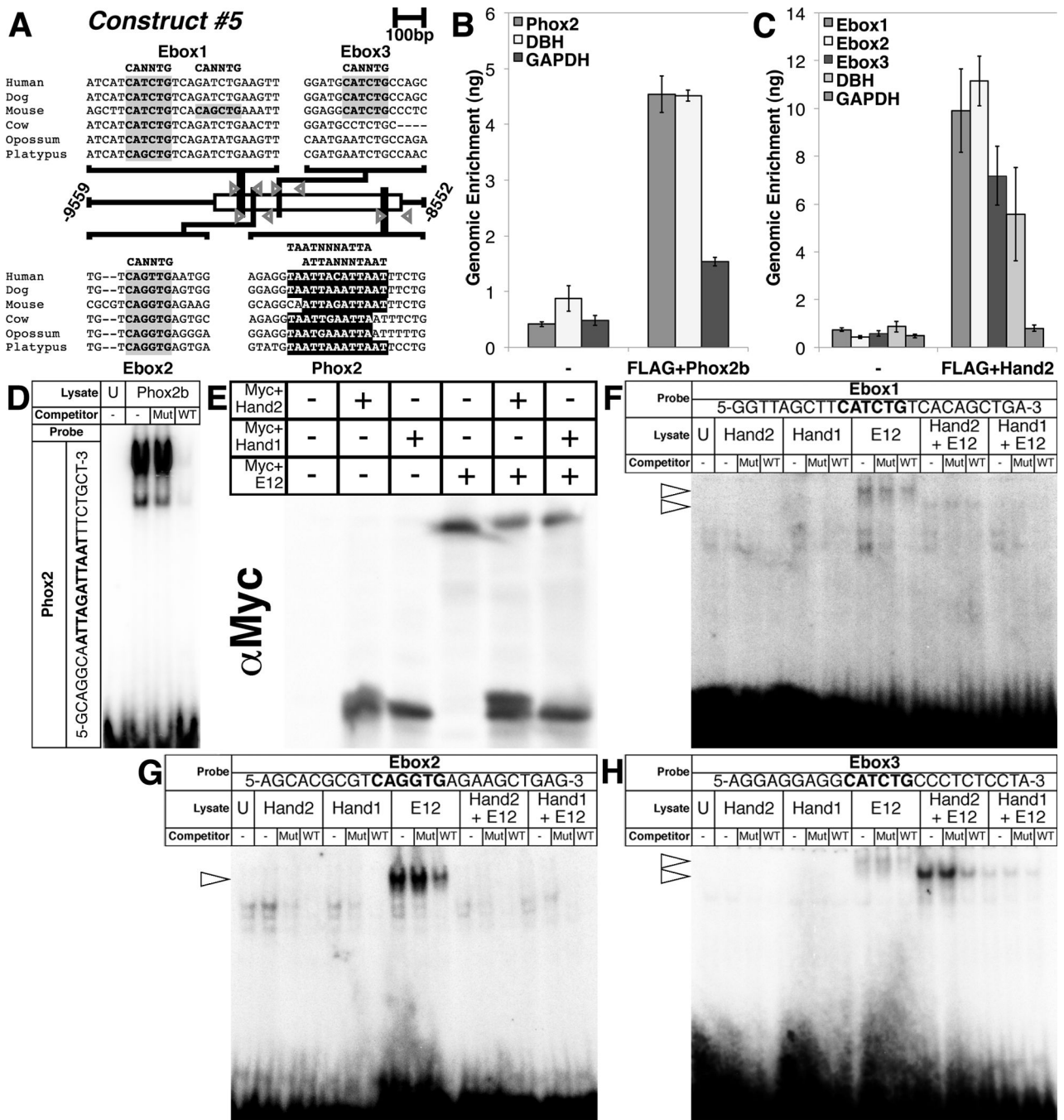


Figure 3. Phox2b and Hand2 bind to evolutionarily conserved consensus sites within the minimal *Hand1* SN enhancer

(A) A schematic shows three conserved E-box binding sites (highlighted in gray) and one conserved Phox2 binding site (highlighted in black) in the 1007bp minimal *Hand1* SN enhancer contained in *Construct #5*. Grey arrowheads denote ChIP primers flanking each of these binding sites. B, C) Immunoprecipitation of either FLAG+Phox2b or FLAG+Hand2 cross-linked complexes using α -FLAG antibody, produces enrichment of the Phox2 site-containing region (B) and three E-box-containing regions (C), respectively, in a manner similar to that of a positive control (DBH), but not a negative control (GAPDH). Error bars represent standard error. D) EMSA using lysate programmed with FLAG+Phox2b

demonstrate binding to a radiolabeled oligonucleotide mimicking the Phox2 consensus site in the *Hand1* SG enhancer. E) A Western blot for α -Myc verifies that Myc+Hand2 and Myc+Hand1 transcribed *in vitro* either in the presence or absence of Myc+E12 were synthesized in equivalent amounts. F – H) EMSAs employing these lysates reveal that E-box1 (F) is weakly bound by E12 homodimers and Hand2–E12 heterodimers, but not Hand1–E12 heterodimers, nor Hand2 or Hand1 homodimers, that E-box2 (G) is bound solely by E12 homodimers, and that E-box3 (H) is not bound by Hand2 or Hand1 homodimers, is weakly bound by E12 homodimers and Hand1–E12 heterodimers, and is robustly bound by Hand2–E12 heterodimers. Binding in all EMSAs was competitively inhibited by unlabeled wild-type (WT) oligos, but not by unlabeled mutant (Mut) oligos. For all EMSAs, unprogrammed lysate (U) is used to control for non-specific protein binding. Arrowheads denote specific protein-DNA complexes.

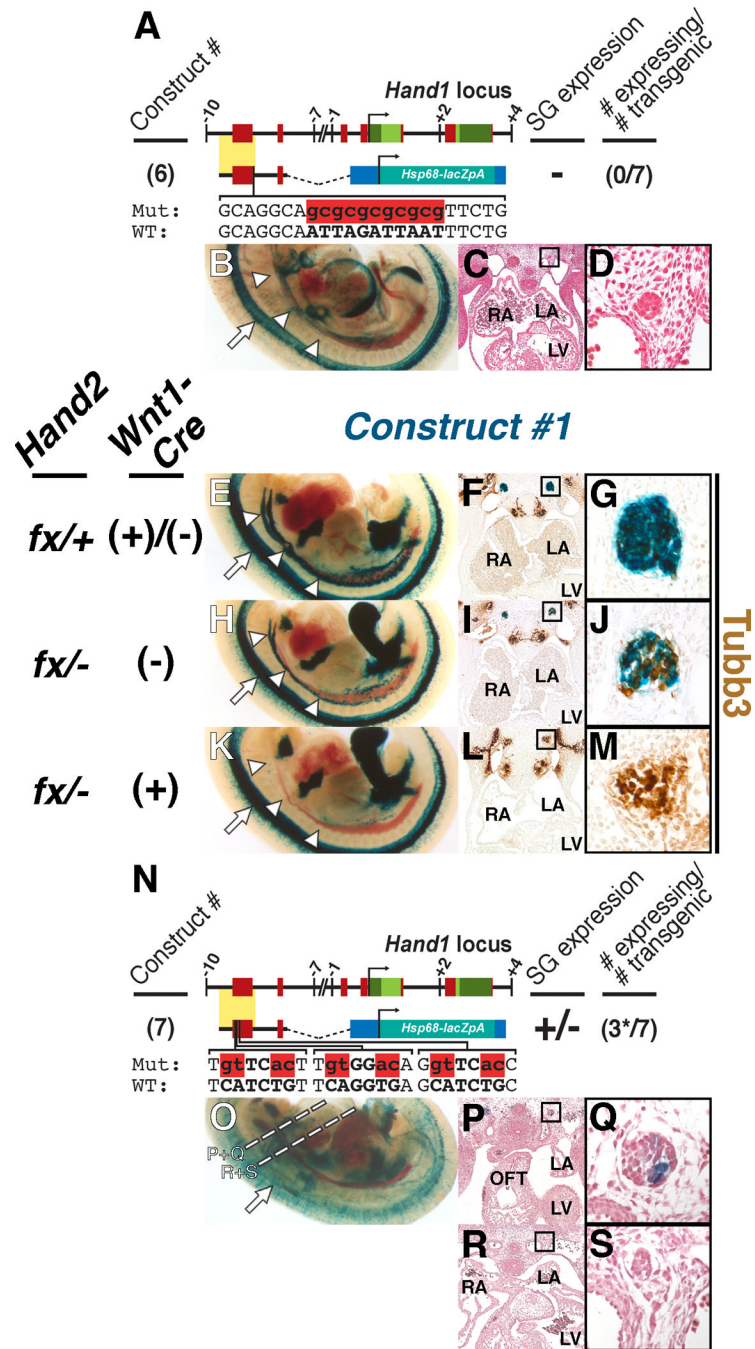


Figure 4. Phox2 and Hand2 are necessary for *Hand1*-reporter trans-activation *in vivo*
 (A) Schematic of *Hand1*-reporter *Construct #6*, in which the Phox2 binding site in *Construct #4* has been mutated (red). 0/7 E11.5 transient transgenic embryos (B–D) displayed SG expression. (E – M) Expression of *Construct #1* is reduced in E11.5 *Hand2^{fx/-};Wnt1-Cre* (–) hypomorphs and lost or reduced in identically staged *Hand2^{fx/-};Wnt1-Cre*(+) conditional knockouts. Cleared wholemount preparations (E, H, and K) show that, compared with control embryos (E), fewer cells within the *Hand2* hypomorphic SG (H) express *Construct #1* (n = 9/10). In the majority of *Hand2* conditional knockout embryos examined, *Construct #1* expression is undetectable (K; n = 4/6). Transverse sections of *Construct #1*-expressing embryos, stained with X-gal (blue) in which

neurons have been labeled with α -Tubb3 immunohistochemistry (brown), photographed at low (F, I, and L) and high magnifications (G, J, and K; denoted by boxes) show that, whereas SG in control embryos (F, G) are almost exclusively comprised of *Hand1*-reporter-positive neurons, and *Hand2* conditional knockout SG (L, M) are exclusively comprised of *Hand1*-reporter-negative neurons, the *Hand2* hypomorphic SG (I, J) are comprised of a mix of both *Hand1*-reporter-positive and negative neurons. n = 2 for each genotype. (N) Schematic of *Hand1*-reporter *Construct #7*, in which the three evolutionarily conserved E-box binding sites in *Construct #4* have all been mutated (red). 3/7 E11.5 transient transgenic embryos (O–S) displayed detectable SG expression. However, expression in these three embryos was not uniform, and was restricted to SG rostral to the OFT (P, Q). Expression was absent in SG caudal to the OFT (R, S). Dashed lines denote the planes of section for P–S. LA – left atrium, LV – left ventricle, OFT – outflow tract, RA – right atrium.

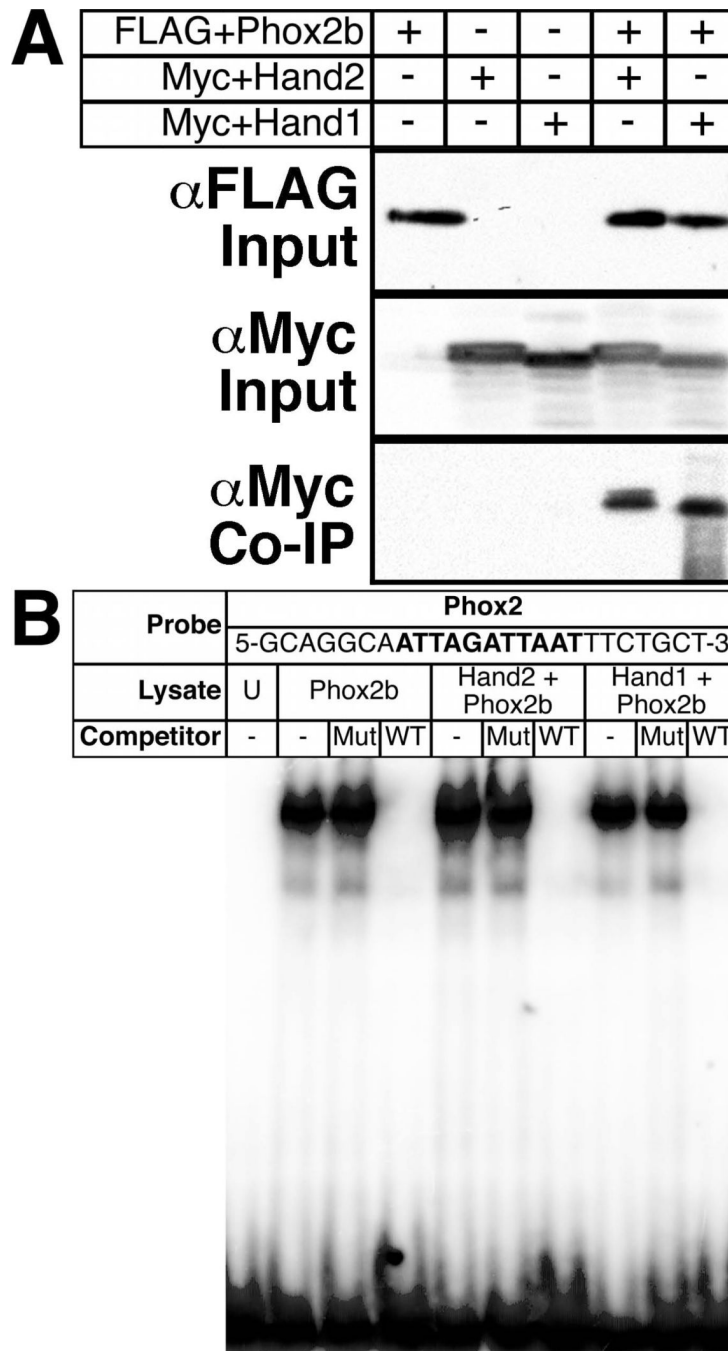


Figure 5. Hand2 and Hand1 interact with Phox2b in a similar manner

A) Co-immunoprecipitation experiments reveal that FLAG+Phox2b (α -FLAG Input) effectively precipitates both Myc+Hand2 and Myc+Hand1 (α -Myc Input) when the two are co-transfected (α -Myc Co-IP), illustrating protein-protein interactions between these factors. B) EMSA using lysate programmed with FLAG+Phox2b either alone or with Myc+Hand2 or Myc+Hand1 demonstrate that formation of specific Phox2b-oligo complexes is not positively or negatively altered in the presence of either Hand factor.

***H1^{fx/+};H2^{+/+}; H1^{fx/+};H2^{+/-}; H1^{fx/-};H2^{+/+}; H1^{fx/-};H2^{+/-};
Wnt1-Cre(+)* *Wnt1-Cre(-)* *Wnt1-Cre(+)* *Wnt1-Cre(+)***

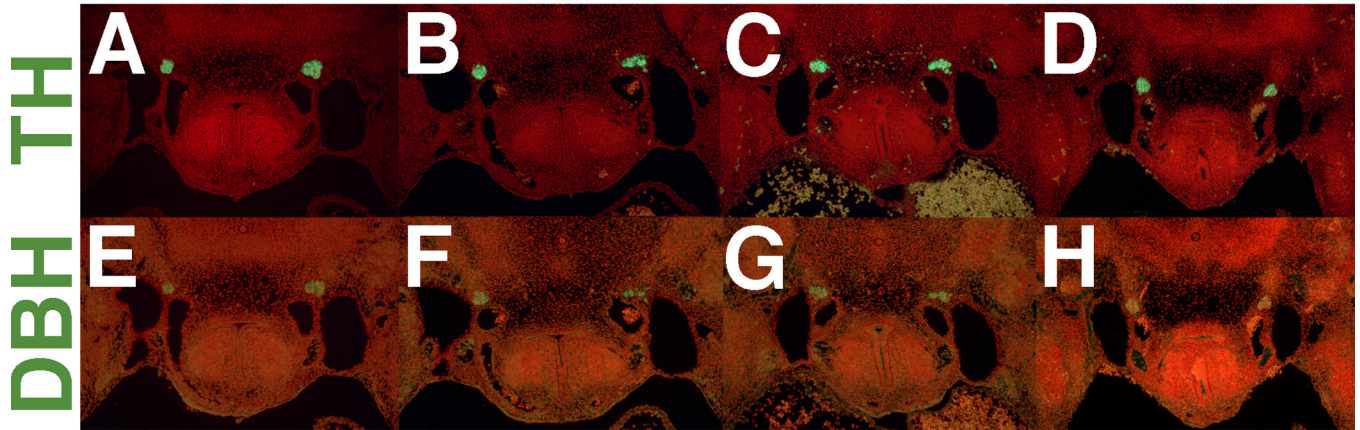


Figure 6. *Hand1* function is not necessary for TH and DBH expression in the SG

A – H) Fluorescent immunohistochemistry upon transverse sections of E11.5 embryos reveals that TH (A – D) and DBH (E – H) protein expression is indistinguishable between control (*H1^{fx/+};H2^{+/+};Wnt1-Cre(+)*; A, E) *Hand2* heterozygous (*H1^{fx/+};H2^{+/-};Wnt1-Cre(-)*; B, F), *Hand1* conditionally null (*H1^{fx/-};H2^{+/+};Wnt1-Cre(+)*; C, G) and doubly *Hand1* conditionally null, *Hand2* heterozygous (*H1^{fx/-};H2^{+/-};Wnt1-Cre(+)*; A, E) mutants.