



Published in final edited form as:

*AJNR Am J Neuroradiol.* 2017 June ; 38(6): 1130–1137. doi:10.3174/ajnr.A5143.

## Relationships among Cortical Glutathione Levels, Brain Amyloidosis, and Memory in Normal Older Adults Investigated in vivo with <sup>1</sup>H MRS and PiB PET

Gloria C. Chiang, M.D.<sup>1</sup>, Xiangling Mao, M.S.<sup>1</sup>, Guoxin Kang, Ph.D.<sup>1</sup>, Eileen Chang, B.A.<sup>1</sup>, Sneha Pandya, M.S.<sup>1</sup>, Shankar Vallabhajosula, Ph.D.<sup>1</sup>, Richard Isaacson, M.D.<sup>2</sup>, Lisa D. Ravdin, Ph.D.<sup>2</sup>, for the Alzheimer's Disease Neuroimaging Initiative\*, and Dikoma C. Shungu, Ph.D.<sup>1</sup>

<sup>1</sup>Department of Radiology, Weill Cornell Medical College, NewYork-Presbyterian Hospital, 525 East 68th Street, Starr Pavilion, Box 141, New York, NY 10065

<sup>2</sup>Department of Neurology, Weill Cornell Medical College, NewYork-Presbyterian Hospital, New York, NY

### Abstract

**Background and Purpose**—Oxidative stress has been implicated as an important pathological mechanism in the development of Alzheimer's disease (AD). The purpose of this study was to assess whether glutathione (GSH) levels, detected noninvasively with proton magnetic resonance spectroscopy (<sup>1</sup>H MRS), are associated with brain amyloidosis and memory in a community-dwelling cohort of normal older adults.

**Materials and Methods**—Fifteen cognitively normal subjects were prospectively enrolled in this study. All subjects underwent <sup>1</sup>H MRS of GSH, a positron emission tomography (PET) scan with an amyloid tracer, and neuropsychological testing using the Repeatable Battery for Neuropsychological Status (RBANS). Associations among GSH levels, brain amyloidosis, and memory were assessed using multivariate regression models.

**Results**—Lower GSH levels were associated with greater brain amyloidosis in the temporal region (p=0.03) and in the parietal (p=0.05) region, adjusted for apolipoprotein E ε4 carrier status. There were no significant associations between GSH and cognitive scores.

**Conclusion**—This study found an association between cortical GSH levels and brain amyloidosis in normal older adults, suggesting a potential role for <sup>1</sup>H MRS measures of GSH as a noninvasive biomarker of early AD pathogenesis.

---

\*Data used in preparation of this article were obtained from the Alzheimer's Disease Neuroimaging Initiative (ADNI) database ([adni.loni.usc.edu](http://adni.loni.usc.edu)). As such, the investigators within the ADNI contributed to the design and implementation of ADNI and/or provided data but did not participate in analysis or writing of this report. A complete listing of ADNI investigators can be found at: [http://adni.loni.usc.edu/wp-content/uploads/how\\_to\\_apply/ADNI\\_Acknowledgement\\_List.pdf](http://adni.loni.usc.edu/wp-content/uploads/how_to_apply/ADNI_Acknowledgement_List.pdf)

**Corresponding author:** Gloria C. Chiang, M.D., Department of Radiology, Division of Neuroradiology, Weill Cornell Medical College, NewYork-Presbyterian Hospital, 525 East 68th Street, Starr Pavilion, Box 141, New York, NY 10065, Phone: 212-746-2616, Fax: 212-746-8597, gcc9004@med.cornell.edu.

## Introduction

Alzheimer's disease (AD), a devastating neurodegenerative disorder afflicting more than 11% of people over the age of 65,<sup>1</sup> is currently the sixth leading cause of death in the United States. Various forms of therapies have failed to show clinical benefit in people with AD.<sup>2</sup> In the absence of disease-modifying pharmacotherapy for AD, identifying and potentially targeting early pathological processes that may lead to the development of AD are essential in efforts towards prevention.

Oxidative stress – defined as excessive production of free radicals relative to total tissue antioxidant reserves – has emerged from in vitro and preclinical studies as a key pathological process in the development of AD.<sup>3–8</sup> In transgenic mouse models, depletion of the reduced form of the tripeptide thiol glutathione (GSH) – the most abundant intracellular antioxidant and free radical scavenger and a reliable marker of oxidative stress<sup>9</sup> – has been reported to precede amyloid oligomerization and plaque formation,<sup>10,11</sup> both pathological hallmarks of AD. A self-propagating cycle of free radical formation, oxidative stress, and amyloid plaque formation has also been shown in vitro.<sup>12</sup> Furthermore, it has been suggested that amyloid may have antioxidant properties, thereby serving as a compensatory mechanism in the presence of oxidative stress.<sup>13</sup> However, the relationship between oxidative stress and amyloidosis in humans remains poorly understood, particularly early in the disease course, when oxidative stress may serve as a potential target for disease-modifying interventions.

The primary aim of this study was therefore to assess the relationship between proton magnetic resonance spectroscopy (<sup>1</sup>H MRS) measures of GSH levels and brain amyloidosis, as assessed with positron emission tomography (PET) using the amyloid tracer, Pittsburgh Compound B (PiB),<sup>14</sup> in a prospective cognitively normal community cohort of elderly subjects. Secondly, we aimed to assess the relationship between GSH levels and memory. Lastly, we investigated whether GSH levels were associated with potentially modifiable AD risk factors.

## Methods

### Subjects

Fifteen cognitively normal subjects, recruited through flyers posted in the community, newspaper advertisements, and ambulatory care clinics, were prospectively enrolled. All subjects gave written informed consent to participate in this study, which was approved by the Institutional Review Board of our institution.

Inclusion criteria consisted of age between 55 and 75 years and intact ability to perform all routine activities of daily living, including living independently in the community. None of the subjects met the criteria for mild cognitive impairment or AD. Subjects were also excluded if they had comorbid medical conditions that could impact brain function, including major psychiatric disorders (i.e. major depression, bipolar disorder, psychosis), brain tumors, prior strokes, significant traumatic brain injury (defined as requiring a visit to the emergency department or a hospital admission), seizure disorders, recent illicit drug use,

alcohol abuse, and other major medical conditions, such as heart failure, recent myocardial infarction, renal failure, liver disease, chronic obstructive pulmonary disease, and malignancy.

### **Clinical data**

All subjects completed detailed questionnaires about their medical history, and medical records were also examined. Clinical data collected included recent weight and height, cholesterol levels, blood pressure measurements, and the number of hours of exercise per week, since these factors have been reported to be associated with risk for AD.<sup>15,16</sup> Exercise was defined as physical activity more strenuous than daily routine activity. We also elicited a family history of dementia, since genetics could explain increased brain amyloidosis in otherwise cognitively normal subjects.<sup>17</sup>

### **Cognitive battery**

Cognitive testing was performed by a board-certified neuropsychologist (L.D.R.). Patients were first screened for depression and anxiety using the Beck Depression Inventory-II<sup>18</sup> and the Beck Anxiety Inventory.<sup>19</sup> Immediate and delayed memory were assessed using subscores of the Repeatable Battery for the Assessment of Neuropsychological Status (RBANS) based on tasks that involved recalling a list of words and a short story.<sup>20</sup> Additional cognitive domains assessed included visuospatial and constructional function, assessed with figure copying and line orientation tasks, attention, assessed with digit span and coding tasks, and language, assessed with picture naming and semantic fluency tasks. The RBANS has been previously reported to have 90% accuracy for discriminating between cognitive normal individuals and those with mild cognitive impairment.<sup>21</sup>

### **Apolipoprotein E ε4 Genotyping**

Blood samples were obtained from all subjects to isolate DNA for APOE genotyping, which was performed using polymerase chain reaction amplification, allele-specific primers, and identification of fragments on an agarose gel.<sup>22</sup>

### **MR Imaging and Spectroscopy Data Acquisition and Analysis**

All subjects underwent a standardized structural MRI scan of the brain and single-voxel <sup>1</sup>H MRS on a research-dedicated 3T GE MR system with an 8-channel phased-array head coil. The MRI protocol consisted of a structural T1-weighted spoiled gradient-recalled echo (SPGR) volumetric scan for tissue segmentation and an axial fast fluid-attenuated inversion recovery (FLAIR) scan to exclude focal pathology.

In vivo <sup>1</sup>H MRS data were obtained from a 2.5 × 2.5 × 2.5 cm<sup>3</sup> voxel prescribed in the medial parietal lobe to include the posterior cingulate gyrus and precuneus – a region chosen because multiple prior studies reported early involvement of these regions by AD due to their inclusion in the memory network.<sup>23–26</sup> The standard J-edited spin echo difference method with TE/TR 68/1500 was used to measure the levels of reduced GSH, as previously described<sup>27–30</sup> and illustrated in Figure 1. Although it has been suggested that a TE of 120ms is optimal for GSH detection by J-editing,<sup>31</sup> we opted to use a TE of 68ms because it yields a difference spectrum in which the co-edited aspartyl (CH2) resonances of NAA

around 2.5ppm are inverted and clearly separated from the non-inverted GSH resonance, facilitating spectral fitting<sup>27,28</sup> (Figure 1). Briefly, a pair of frequency-selective inversion pulses was inserted into the standard point-resolved spectroscopy (PRESS) method and applied on alternate scans at the frequency of the GSH  $\alpha$ -cysteinyl resonance at 4.56 ppm, while avoiding excitation of oxidized GSH  $\alpha$ -cysteinyl at 3.28 ppm.<sup>32</sup> This resulted in two subspectra in which reduced GSH, but not oxidized GSH, was alternately inverted or not inverted. Subtracting these two subspectra yielded a <sup>1</sup>H MR spectrum consisting of only the edited GSH  $\beta$ -cysteinyl resonance at 2.98 ppm. A high test-retest reliability has been reported for detection of  $\gamma$ -aminobutyric acid (GABA) with this MRS technique on the same 3.0 Tesla GE instrument.<sup>33</sup> Spectral data for this study were acquired in 15 minutes using 290 interleaved excitations (580 total) with the editing pulses on or off. The area under the GSH resonance, which is proportional to the concentration of GSH in the voxel-of-interest, was obtained by frequency-domain spectral fitting as previously described.<sup>28</sup> The derived GSH peak areas were then expressed semi-quantitatively as ratios relative to the unsuppressed intravoxel water (W) signal for normalization across subjects before being used in group analyses. To estimate the proportions of gray matter, white matter, and cerebrospinal fluid contained in the voxel of interest, the volumetric SPGR MRI data were segmented using Statistical Parametric Mapping (SPM8, Wellcome Department of Imaging Neurosciences, University College London, UK).

### Pittsburgh Compound B PET Image Acquisition and Analysis

All subjects underwent an amyloid PET scan on a Siemens Biograph PET-CT scanner (Siemens, Knoxville, TN; 1 mm FWHM, 25 cm FOV) using a standardized research protocol.<sup>17</sup> All subjects received an intravenous catheter for injection of 15 mCi of PiB. Sixty minutes after injection, subjects were scanned for 30 minutes with their eyes open in a quiet, dimly lit room. A low-dose CT scan was acquired for attenuation correction, and all images were reconstructed into a 512  $\times$  512 matrix.

Summed PET images corresponding to the 60–90 minutes of PiB data were generated and nonlinearly normalized to a PiB template. The PiB template was generated by averaging the summed images of 48 cognitively normal individuals in the same age range, which were downloaded from the Alzheimer's Disease Neuroimaging Initiative (ADNI) online data repository ([adni.loni.usc.edu](http://adni.loni.usc.edu)). The ADNI was launched in 2003 as a public-private partnership, led by Principal Investigator Michael W. Weiner, MD, with the primary goal to test whether serial magnetic resonance imaging (MRI), positron emission tomography (PET), other biological markers, and clinical and neuropsychological assessment may be combined to measure the progression of mild cognitive impairment (MCI) and early Alzheimer's disease (AD). More information may be obtained at [www.adni-info.org](http://www.adni-info.org).

Orientation and origin for all the PiB PET images were automatically fixed to the anterior commissure to match the templates used in Statistical Parametric Mapping (SPM, Wellcome Trust Center for Neuroimaging), since SPM's "normalize" function uses the origin as a starting estimate. These reoriented PiB PET images and the mean PiB template were skull-stripped with the Brain Extraction Tool from FMRIB Software Library (FSL)<sup>34</sup> to avoid any bias induced by skull staining. All the skull-stripped PiB PET images were then nonlinearly

warped to the skull-stripped mean PiB template. Gray matter regions were parcellated using the Automated Anatomical Labeling (AAL) atlas to obtain 116 automated regions-of-interest.<sup>35</sup> Regional PiB uptake values were then normalized by the subject's cerebellar reference uptake.

Prior ADNI publications determined that the four large regions of the brain that are most useful in measuring the degree of brain amyloidosis are the frontal region, anterior/posterior cingulate region, lateral parietal region, and lateral temporal region, using the cerebellum as a reference region.<sup>36–39</sup> Using regions-of-interest from the AAL atlas, amyloid deposition in the frontal region was determined by averaging the uptake values from the bilateral superior frontal, bilateral superior orbital frontal, bilateral middle frontal, bilateral inferior frontal opercular, bilateral inferior frontal triangularis, bilateral supplemental motor, bilateral medial superior frontal, and bilateral middle orbital frontal regions of the brain. The cingulate region included the bilateral anterior, middle, and posterior cingulum regions. The lateral parietal region included the bilateral superior and inferior parietal regions, as well as the precuneus. The lateral temporal region included the bilateral and superior middle temporal regions.

### Statistical analysis

All statistical analyses were performed in STATA version 13 (StataCorp, College Station, TX).

The potential influence of voxel tissue heterogeneity and brain matter content in the analyses was examined by testing for associations between brain matter proportions in the voxel of interest and both MRS measures of GSH levels and PiB PET measures of amyloid levels. We also examined the distribution of brain tissue proportions within our subject cohort to identify outliers.

To assess whether there was an association between GSH and brain amyloidosis, based on uptake on PiB PET, ordinary least squares regression analysis was used with amyloid levels in each of the four brain regions as the outcome variable and GSH as the predictor variable. Since APOE  $\epsilon$ 4 carrier status has been shown to be associated with increased brain amyloidosis in the literature,<sup>40–43</sup> carrier status was included as a covariate to adjust for this confounding factor.

The robustness of any association between GSH and amyloidosis was examined by bootstrapping the original cohort of subjects 1000 times to obtain 95% confidence intervals.<sup>44</sup> The effect of a clear outlier (high parietal amyloidosis and low GSH) on the association was examined by performing the analyses both with and without this data point. To assess the effect sizes of our associations, we estimated the correlation coefficients between GSH and amyloidosis, with less than 0.1 indicating a small effect, 0.1–0.5 indicating a medium effect, and greater than 0.5 indicating a large effect.<sup>45</sup> We also calculated the partial eta-squared for GSH based on the regression models,<sup>46</sup> with less than 0.06 indicating a small effect, 0.06–0.14 indicating a medium effect, and greater than 0.14 indicating a large effect.<sup>47</sup>

To assess whether there was an association between GSH levels and memory, ordinary least squares regression analysis was again used with GSH as the predictor and the age-adjusted subscores from the RBANS as the outcome variable. Since APOE  $\epsilon$ 4 carrier status is known to be a risk factor for AD,<sup>48,49</sup> it was again included as a covariate.

Finally, we explored associations between GSH and potential mediators of oxidative stress, including obesity, hypercholesterolemia, hypertension, and exercise again using ordinary least squares regression analyses.

## Results

Subjects ranged in age from 55 to 72 years (mean  $63 \pm 5$  years), and 5 (33%) of the subjects were female. All subjects completed at least a year of college, with a mean of  $16 \pm 3$  years of education. Five (33%) of the subjects had a family history of dementia. Ten (67%) of the subjects had the APOE  $\epsilon$ 3/ $\epsilon$ 3 genotype, 2 (13%) of the subjects carried the APOE  $\epsilon$ 2/ $\epsilon$ 3 genotype, and 3 (20%) of the subjects carried the APOE  $\epsilon$ 3/ $\epsilon$ 4 genotype. Eight (53%) of the subjects had comorbid hypercholesterolemia, and 7 (47%) of the subjects had comorbid hypertension. Body mass index (BMI) ranged from 22 to 37, with a mean of  $29 \pm 4$ . Subjects reported exercising 0 to 14 hours per week, with a mean of  $3 \pm 4$  hours.

The results of the regression analyses evaluating the association between  $^1\text{H}$  MRS GSH and amyloidosis, as assessed by PiB PET, are provided in Table 1 and shown in Figure 2. There were no significant associations between tissue proportions and GSH levels or amyloidosis. Adjusting for APOE4 status, GSH levels were inversely associated with levels of amyloidosis in both the temporal region ( $p = 0.03$ , coefficient =  $-209$ , 95% confidence interval =  $-395$  to  $-23$ ) and parietal region ( $p = 0.05$ , coefficient =  $-308$ , 95% confidence interval =  $-621$  to  $3$ ). Posthoc bootstrapping yielded a p-value of 0.08 (95% confidence interval =  $-441$  to  $23$ ) for the temporal region and 0.1 (95% confidence interval =  $-705$  to  $88$ ) for the parietal region. In addition, the association between parietal region amyloidosis and GSH appears to have been primarily driven by one subject with high amyloidosis and low GSH. The association was no longer significant when this outlier was excluded (coefficient  $-62$ ,  $p = 0.60$ ). There was no significant association between GSH levels and either frontal ( $p = 0.67$ ) or cingulate ( $p = 0.88$ ) region amyloidosis.

The correlation coefficient between GSH and temporal region amyloidosis was  $-0.51$ , indicating a large effect size. The correlation coefficient between GSH and parietal region amyloidosis was  $-0.47$ , indicating a medium effect size. In the regression models, the effect sizes for GSH were large, explaining a greater proportion of the variance in amyloidosis than APOE4 status. The partial eta-squared for GSH and APOE4 were 0.33 and 0.25 respectively for the temporal region. The partial eta-squared for GSH and APOE4 were 0.28 and 0.23 respectively for the parietal region.

The results of the regression analyses evaluating the association between GSH and cognition are provided in Table 2 and shown in Figure 3. None of the associations were statistically significant.

The results of the exploratory regression analyses evaluating the association between GSH levels and risk factors for AD are shown in Table 3. There was a trend-level inverse association between body mass index (BMI) and GSH levels ( $p = 0.08$ ). Exercise, hypercholesterolemia, and hypertension were not significantly associated with GSH levels ( $p > 0.05$ ).

## Discussion

The value of noninvasive measurement of GSH by  $^1\text{H}$  MRS lies in its potential to directly implicate and support a role for oxidative stress in the early stages of AD development. Using this technique, the present study sought to identify a role for oxidative stress in a prospective cohort of normal older subjects, assessing for potential associations between cortical GSH levels and brain amyloidosis, and between GSH and memory. The major finding was that GSH levels, measured with  $^1\text{H}$  MRS, are negatively associated with brain amyloidosis, as assessed with PiB PET, in the temporal and parietal regions. In this cognitively normal cohort, there were no associations between GSH levels and immediate and delayed memory.

The inverse association between levels of GSH and temporal and parietal amyloid levels supports a role for oxidative stress in amyloid plaque formation – a finding that is consistent with prior laboratory and preclinical studies.<sup>5,6–8,46–49</sup> An association between oxidative stress and amyloidosis has also been suggested by clinical studies on AD. Mandal et al<sup>50</sup> found that GSH levels measured by  $^1\text{H}$  MRS could accurately discriminate among healthy subjects, individuals with mild cognitive impairment, and patients with AD, with decreased GSH levels being associated with increased levels of cognitive impairment. In postmortem AD brains,<sup>51</sup> depleted GSH levels accompanied the diagnosis of AD. There have also been reports associating GSH depletion with mitochondrial dysfunction<sup>52,53</sup> and neuronal degeneration.<sup>54,55</sup> On the other hand, increased GSH levels have been reported in mild cognitive impairment compared to healthy subjects, suggesting that there may be a compensatory upregulation of GSH in the early stages of AD.<sup>56</sup> However, no direct relationship between oxidative stress and amyloidosis was established in any of the prior clinical studies because subject groups were defined clinically without quantifying the degree of underlying amyloidosis. In the present study, using an advanced  $^1\text{H}$  MRS editing technique that enables reliable in vivo measurements of GSH, we have obtained strong preliminary evidence of an inverse relationship between GSH levels and amyloidosis in older adults, even before onset of mild cognitive impairment. Replication in larger cohorts would both solidify this result and support measurement of brain GSH levels with  $^1\text{H}$  MRS as a noninvasive biomarker of AD risk early in disease development.

This study also investigated whether GSH levels are associated with memory, since memory deficits are known to be the earliest clinical manifestation of AD<sup>57</sup> and predict time-to-progression from cognitively normal to mild cognitive impairment.<sup>58</sup> Since oxidative stress can exert deleterious effects on mitochondrial function and neuronal integrity, we surmised that GSH depletion could also lead to memory dysfunction. Two prior studies that included subjects with MCI and AD reported conflicting results, with one reporting GSH deficits in MCI and AD<sup>50</sup> and the other reporting a potential compensatory increase of GSH in MCI.<sup>56</sup>

Our study found no associations between GSH levels and cognitive scores in our cognitively normal cohort, necessitating further studies in larger cohorts.

In exploring associations between GSH and AD risk factors, we found a trend-level inverse association between GSH levels and BMI. Barnes et al<sup>15</sup> previously reported that up to 54% of AD cases may be attributable to modifiable risk factors, with 21% attributable to physical inactivity and 7% attributable to obesity. In the present cohort, we explored the association between these risk factors and GSH levels and found a trend-level negative association with BMI, which could be consistent with a prior large cohort study of over 2000 subjects, which found that increased markers of oxidative stress, which would deplete GSH, increased with BMI.<sup>59</sup> If this finding is validated, monitoring GSH levels by <sup>1</sup>H MRS could also serve as a biomarker of the potential benefits of various lifestyle-modification regimens, without the radiation risk and cost of PET imaging.

Finally, this study has a number of limitations. First, the sample size is relatively small, potentially limiting both statistical power and generalizability of the findings. Replication of these findings in larger cohorts will be necessary. Secondly, our cohort consisted of cognitively normal individuals. As a result, subjects did not have significant memory deficits, possibly limiting our ability to detect statistically significant associations between GSH and memory, particularly in a small cohort. Thirdly, we targeted the precuneus for GSH measurement with MRS because this region is affected early in AD pathology. However, there may be abnormalities in other brain regions, which would need to be investigated to obtain a more complete understanding of oxidative stress-associated brain damage in AD and its prodromal stages. Furthermore, although we found associations between GSH and amyloidosis, longitudinal studies are necessary to determine whether decreased GSH levels increase subsequent risk of developing AD. Finally, we did not enroll a control group for comparison with our cognitively normal cohort. As a result, it is not known whether the GSH levels detected in our cohort are significantly abnormal.

## Conclusion

In summary, this is the first study, to our knowledge, to explore in vivo associations between GSH and brain amyloidosis, as well as GSH and memory in a cognitively normal cohort. This supports a role for <sup>1</sup>H MRS measures of cortical glutathione as a potential early biomarker of AD pathology and therapeutic response monitoring of existing or future disease-modifying interventions targeting oxidative stress.

## Acknowledgments

Dr. Amy Kuceyeski for assistance with imaging atlas creation and analysis.

Data collection and sharing for this project was funded by the Alzheimer's Disease Neuroimaging Initiative (ADNI) (National Institutes of Health Grant U01 AG024904) and DOD ADNI (Department of Defense award number W81XWH-12-2-0012). ADNI is funded by the National Institute on Aging, the National Institute of Biomedical Imaging and Bioengineering, and through generous contributions from the following: AbbVie, Alzheimer's Association; Alzheimer's Drug Discovery Foundation; Araclon Biotech; BioClinica, Inc.; Biogen; Bristol-Myers Squibb Company; CereSpir, Inc.; Cogstate; Eisai Inc.; Elan Pharmaceuticals, Inc.; Eli Lilly and Company; EuroImmun; F. Hoffmann-La Roche Ltd and its affiliated company Genentech, Inc.; Fujirebio; GE Healthcare; IXICO Ltd.; Janssen Alzheimer Immunotherapy Research & Development, LLC.; Johnson & Johnson Pharmaceutical Research & Development LLC.; Lumosity; Lundbeck; Merck & Co., Inc.; MesoScale Diagnostics,



LLC.; NeuroRx Research; Neurotrack Technologies; Novartis Pharmaceuticals Corporation; Pfizer Inc.; Piramal Imaging; Servier; Takeda Pharmaceutical Company; and Transition Therapeutics. The Canadian Institutes of Health Research is providing funds to support ADNI clinical sites in Canada. Private sector contributions are facilitated by the Foundation for the National Institutes of Health ([www.fnih.org](http://www.fnih.org)). The grantee organization is the Northern California Institute for Research and Education, and the study is coordinated by the Alzheimer's Therapeutic Research Institute at the University of Southern California. ADNI data are disseminated by the Laboratory for Neuro Imaging at the University of Southern California.

**Grant support:** This work was supported by an NIH National Center for Advancing Translational Sciences/CTSC grant (UL1 TR000457-06)

## References

1. Alzheimer's Association. Alzheimer's disease facts and figures. 2016. Accessed online at: <http://www.alz.org/facts/> on 5/29/16
2. Mangialasche F, Solomon A, Winblad B, et al. Alzheimer's disease: clinical trials and drug development. *Lancet Neurol.* 2010; 9:702–716. [PubMed: 20610346]
3. Apelt J, Bigl M, Wunderlich P, et al. Aging-related increase in oxidative stress correlates with developmental pattern of beta-secretase activity and beta-amyloid plaque formation in transgenic Tg2576 mice with Alzheimer-like pathology. *Int J Dev Neurosci.* 2004; 22:475–484. [PubMed: 15465277]
4. Nunomura A, Perry G, Aliev G, et al. Oxidative damage is the earliest event in Alzheimer disease. *J Neuropathol Exp Neurol.* 2001; 60:759–767. [PubMed: 11487050]
5. Pratico D, Uryu K, Leight S, et al. Increased lipid peroxidation precedes amyloid plaque formation in an animal model of Alzheimer amyloidosis. *J Neurosci.* 2001; 21:4183–4187. [PubMed: 11404403]
6. Komatsu H, Liu L, Murray IV, Axelsen PH. A mechanistic link between oxidative stress and membrane mediated amyloidogenesis revealed by infrared spectroscopy. *BBA Biomembranes.* 2007; 1768:1913–1922. [PubMed: 17632073]
7. Nunomura A, Castellani RJ, Zhu X, et al. Involvement of oxidative stress in Alzheimer disease. *J Neuropathol Exp Neurol.* 2006; 65:631–641. [PubMed: 16825950]
8. Bonda DJ, Wang X, Lee H, et al. Neuronal failure in Alzheimer disease: a view through the oxidative stress looking-glass. *Neurosci Bull.* 2014; 30:243–252. [PubMed: 24733654]
9. Pocernich CB, Butterfield DA. Elevation of glutathione as a therapeutic strategy in disease. *Biochim Biophys Acta.* 2012; 1822:625–630. [PubMed: 22015471]
10. Resende R, Moreira PI, Proenca T, et al. Brain oxidative stress in a triple-transgenic mouse model of Alzheimer disease. *Free Radic Biol Med.* 2008; 44:2051–2057. [PubMed: 18423383]
11. Zhang C, Rodriguez C, Spaulding J, et al. Age-dependent and tissue-related glutathione redox status in a mouse model of Alzheimer's disease. *J Alzheimers Dis.* 2012; 28:655–666. [PubMed: 22045490]
12. Hensley K, Carney JM, Mattson MP, et al. A model for beta-amyloid aggregation and neurotoxicity based on free radical generation by the peptide: Relevance to Alzheimer disease. *Proc Natl Acad Sci USA.* 1994; 91:3270–3274. [PubMed: 8159737]
13. Smith MA, Casadesus G, Joseph JA, et al. Amyloid-beta and tau serve antioxidant functions in the aging and Alzheimer brain. *Free Radic Biol Med.* 2002; 33:1194–1199. [PubMed: 12398927]
14. Rowe CC, Villemagne VL. Brain amyloid imaging. *J Nucl Med.* 2011; 52:1733–1740. [PubMed: 21917849]
15. Barnes DE, Yaffe K. The projected impact of risk factor reduction on Alzheimer's disease prevalence. *Lancet Neurol.* 2011; 10:819–828. [PubMed: 21775213]
16. Sato N, Morishita R. The roles of lipid and glucose metabolism in modulation of beta-amyloid, tau, and neurodegeneration in the pathogenesis of Alzheimer disease. *Front Aging Neurosci.* 2015; 7:199. [PubMed: 26557086]
17. Mosconi L, Rinne JO, Tsui WH, et al. Increased Fibrillar Amyloid-beta burden in normal individuals with a family history of late-onset Alzheimer's. *Proceedings of the National Academy of Sciences of the United States of America.* 2010; 107:5949–5954. [PubMed: 20231448]

18. Lasa L, Ayuso-Mateos JL, Vazquez-Barquero JL, et al. The use of the Beck Depression Inventory to screen for depression in the general population: preliminary analysis. *J Affect Disord.* 2000; 57:261–265. [PubMed: 10708841]
19. Beck AT, Epstein N, Brown G, et al. An inventory for measuring clinical anxiety: psychometric properties. *J Consult Clin Psychol.* 1988; 56:893–897. [PubMed: 3204199]
20. Randolph C, Tierney MC, Mohr E, et al. The Repeatable Battery for the Assessment of Neuropsychological Status (RBANS): preliminary clinical validity. *J Clin Exp Neuropsychol.* 1998; 20:310–319. [PubMed: 9845158]
21. Karantzoulis S, Novitski J, Gold M, Randolph C. The Repeatable Battery for the Assessment of Neuropsychological Status (RBANS): utility in detection and characterization of mild cognitive impairment due to Alzheimer's disease. *Arch Clin Neuropsychol.* 2013; 28(8):837–844. [PubMed: 23867976]
22. Saykin AJ, Shen L, Foroud TM, et al. Alzheimer's Disease Neuroimaging Initiative biomarkers as quantitative phenotypes: Genetics core aims, progress, and plans. *Alzheimers Dement.* 2010; 6:265–273. [PubMed: 20451875]
23. Herholz K, Salmon E, Perani D, et al. Discrimination between Alzheimer dementia and controls by automated analysis of multicenter FDG PET. *Neuroimage.* 2002; 17:302–316. [PubMed: 12482085]
24. Vogt BA, Vogt LI, Vrana KE, et al. Multivariate analysis of laminar patterns of neurodegeneration in posterior cingulate cortex in Alzheimer's disease. *Exp Neurol.* 1998; 153:8–22. [PubMed: 9743563]
25. Murray ME, Przybelski SA, Lesnick TG, et al. Early Alzheimer's disease neuropathology detected by proton MR spectroscopy. *J Neurosci.* 2014; 34:16247–16255. [PubMed: 25471565]
26. Kantarci K. 1H magnetic resonance spectroscopy in dementia. *Br J Radiol.* 2007; 80:S146–S152. [PubMed: 18445744]
27. Shungu DC, Weiduschat N, Murrrough JW, et al. Increased ventricular lactate in chronic fatigue syndrome III. Relationships to cortical glutathione and clinical symptoms implicate oxidative stress in disorder pathophysiology. *NMR Biomed.* 2012; 2:1073–1087.
28. Weiduschat N, Mao X, Hupf J, Armstrong N, Kang G, Lange DJ, Mitsumoto H, Shungu DC. Motor cortex glutathione deficit in ALS measured in vivo with the J-editing technique. *Neurosci Lett.* 2014 Jun 6.570:102–7. [PubMed: 24769125]
29. Geramita M, van der Veen JW, Barnett AS, Savostyanova AA, Shen J, Weinberger DR, Marengo S. Reproducibility of prefrontal gamma-aminobutyric acid measurements with J-edited spectroscopy. *NMR Biomed.* 2011; 24(9):1089–1098. [PubMed: 21290458]
30. Mullins PG, McGonigle DJ, O'Gorman RL, Puts NA, Vidyasagar Evans CJ, Cardiff Symposium on Symposium on MRSoG, Edden RA. Current practice in the use of MEGA-PRESS spectroscopy for the detection of GABA. *Neuroimage.* 2014; 86:43–52. [PubMed: 23246994]
31. An L, Zhang Y, Thomasson DM, Latour LL, Baker EH, Shen J, Warach S. Measurement of glutathione in normal volunteers and stroke patients at 3T using J-difference spectroscopy with minimized subtraction errors. *J Magn Reson Imag.* 2009; 30:263–270.
32. Nepravishta R, Sabelli R, Iorio E, et al. Oxidative species and S-glutathionyl conjugates in the apoptosis induction by allyl thiosulfate. *FEBS J.* 2012; 279:154–167. [PubMed: 22035263]
33. Shungu DC, Mao X, Gonzales R, Soones TN, Dyke JP, van der Veen JW, Kegeles LS. Brain  $\gamma$ -aminobutyric acid (GABA) detection in vivo with the J-editing  $^1\text{H}$  MRS technique: a comprehensive methodological evaluation of sensitivity enhancement, macromolecule contamination and test-retest reliability. *NMR Biomed.* 2016 Jul; 29(7):932–42. [PubMed: 27173449]
34. Smith SM. Fast robust automated brain extraction. *Human Brain Mapping.* 2002; 17(3):143–155. [PubMed: 12391568]
35. Tzourio-Mazoyer N, Landeau B, Papathanassiou D, et al. Automated anatomical labeling of activations in SPM using a macroscopic anatomical parcellation of the MNI MRI single-subject brain. *Neuroimage.* 2002; 15:273–289. [PubMed: 11771995]

36. Mormino EC, Kluth JT, Madison CM, Rabinovici GD, Baker SL, Miller BL, Koeppe RA, Mathis CA, Weiner MW, Jagust WJ. Episodic memory loss is related to hippocampal-mediated beta-amyloid deposition in elderly subjects. *Brain*. 2009; 132(Pt5):1310–1323. [PubMed: 19042931]
37. Jagust WJ, Landau SM, Shaw LM, Trojanowski JQ, Koeppe RA, Reiman EM, Foster NL, Petersen RC, Weiner MW, Price JC, Mathis CA. Relationships between biomarker in aging and dementia. *Neurology*. 2009; 73(15):1193–1199. [PubMed: 19822868]
38. Landau SM, Breault C, Joshi AD, et al. Amyloid-beta imaging with Pittsburgh Compound B and florbetapir: comparing radiotracers and quantification methods. *J Nucl Med*. 2013; 54:70–77. [PubMed: 23166389]
39. Jagust WJ, Landau SM, Koeppe RA, et al. The ADNI PET Core: 2015. *Alzheimers Dement*. 2015; 11:757–771. [PubMed: 26194311]
40. Schmechel DE, Saunders AM, Strittmatter WJ, et al. Increased amyloid beta-peptide deposition in cerebral cortex as a consequence of apolipoprotein E genotype in late-onset Alzheimer disease. *Proc Natl Acad Sci USA*. 1993; 90:9649–9653. [PubMed: 8415756]
41. Reiman EM, Chen K, Liu X, et al. Fibrillar amyloid-beta burden in cognitively normal people at 3 levels of genetic risk for Alzheimer's disease. *Proc Natl Acad Sci USA*. 2009; 106:6820–6825. [PubMed: 19346482]
42. Bu G. Apolipoprotein E and its receptors in Alzheimer's disease: pathways, pathogenesis and therapy. *Nat Rev Neurosci*. 2009; 10:333–344. [PubMed: 19339974]
43. Small GW, Siddarth P, Burggren AC, et al. Influence of cognitive status, age, and APOE-4 genetic risk on brain FDDNP-PET binding in non-demented persons. *Arch Gen Psychiatry*. 2009; 66:81–87. [PubMed: 19124691]
44. Vittinghoff, E., Shiboski, S., Glidden, D., et al. *Regression methods in biostatistics: linear, logistic, survival, and repeated measures models*. Vol. 62. New York, NY: Springer; 2005. p. 138-139.
45. Cohen J. A power primer. *Psychol Bull*. 1992; 112:155–159. [PubMed: 19565683]
46. [accessed 12/15/2016] How can I compute effect size in Stata for regression? UCLA: Statistical Consulting Group. From <http://www.ats.ucla.edu/stat/stata/faq/regeffectsiz.htm>
47. Cohen, JW. *Statistical power analysis for the behavioral sciences*. 2nd. Hillsdale, NJ: Lawrence Erlbaum Associates; 1988.
48. Corder EH, Saunders AM, Strittmatter WJ, et al. Gene dose of apolipoprotein E type 4 allele and the risk of Alzheimer's disease in late onset families. *Science*. 1993; 261:921–923. [PubMed: 8346443]
49. Seshadri S, Drachman DA, Lippa CF. Apolipoprotein E epsilon 4 allele and the lifetime risk of Alzheimer's disease: what physicians know, and what they should know. *Arch Neurol*. 1995; 52:1074–1079. [PubMed: 7487559]
50. Mandal PK, Saharan S, Tripathi M, Murari G. Brain glutathione levels - a novel biomarker for mild cognitive impairment and Alzheimer's disease. *Biological Psychiatry*. 2015; 78:702–710. [PubMed: 26003861]
51. Gu M, Owen AD, Toffa SE, et al. Mitochondrial function, GSH and iron in neurodegeneration and Lewy body diseases. *J Neurol Sci*. 1998; 158:24–29. [PubMed: 9667773]
52. Jain A, Martensson J, Stole F, et al. Glutathione deficiency leads to mitochondrial damage in brain. *Proc Natl Acad Sci USA*. 1991; 88:1913–1917. [PubMed: 2000395]
53. Venkateshappa C, Harish G, Mahadevan A, et al. Elevated oxidative stress and decreased antioxidant function in the human hippocampus and frontal cortex with increasing age: Implications for neurodegeneration in Alzheimer's disease. *Neurochem Res*. 2012; 37:1601–1614. [PubMed: 22461064]
54. Gibson GE, Starkov A, Blass JP, et al. Cause and consequence: mitochondrial dysfunction initiates and propagates neuronal dysfunction, neuronal death and behavioral abnormalities in age associated neurodegenerative diseases. *Biochim Biophys Acta*. 2010; 1802:122–134. [PubMed: 19715758]
55. Lin MT, Beal MF. Mitochondrial dysfunction and oxidative stress in neurodegenerative diseases. *Nature*. 2006; 443:787–795. [PubMed: 17051205]
56. Duffy SL, Lagopoulos J, Hickie IB, et al. Glutathione relates to neuropsychological functioning in mild cognitive impairment. *Alzheimers Dement*. 2014; 10:67–75. [PubMed: 23688577]

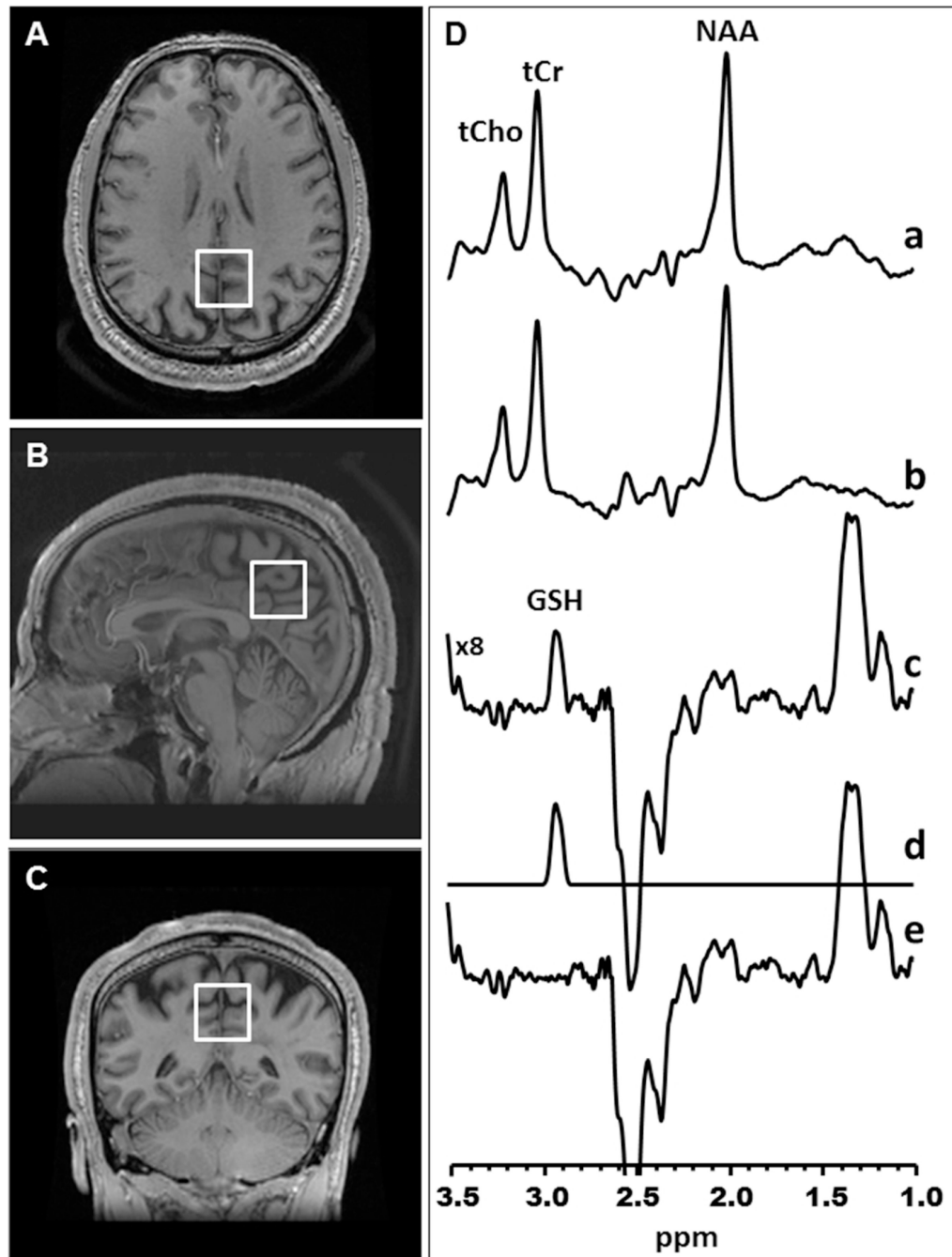
57. Lezak, MD., Howieson, D., Loring, D. Neuropsychological assessment. 4th. Oxford: Oxford University Press; 2004. p. 207-215.
58. Blacker D, Lee H, Muzikansky A, et al. Neuropsychological measures in normal individuals that predict subsequent cognitive decline. Arch Neurol. 2007; 64:862–871. [PubMed: 17562935]
59. Wonisch W, Falk A, Sundl I, et al. Oxidative stress increases continuously with BMI and age with unfavourable profiles in males. Aging Male. 2012; 15:159–165. [PubMed: 22468695]

Author Manuscript

Author Manuscript

Author Manuscript

Author Manuscript



**Figure 1. Glutathione detection in the medial parietal lobe with the J-edited  $^1\text{H}$  MRS**  
 [A] Axial, [B] sagittal and [C] coronal MR images of a human brain, with depiction of the size, location and angulation of the voxel of interest in the medial parietal lobe. [D] Demonstration of in vivo human brain glutathione (GSH) detection by  $^1\text{H}$  MRS: (a) and (b), single-voxel subspectra acquired in 15 min with the editing pulse on and off and 290 (580 total) interleaved averages; spectrum (c), difference between spectra (a) and (b) showing the edited brain GSH resonance at 2.98 ppm; spectrum (d), model fitting of spectrum (c) to obtain

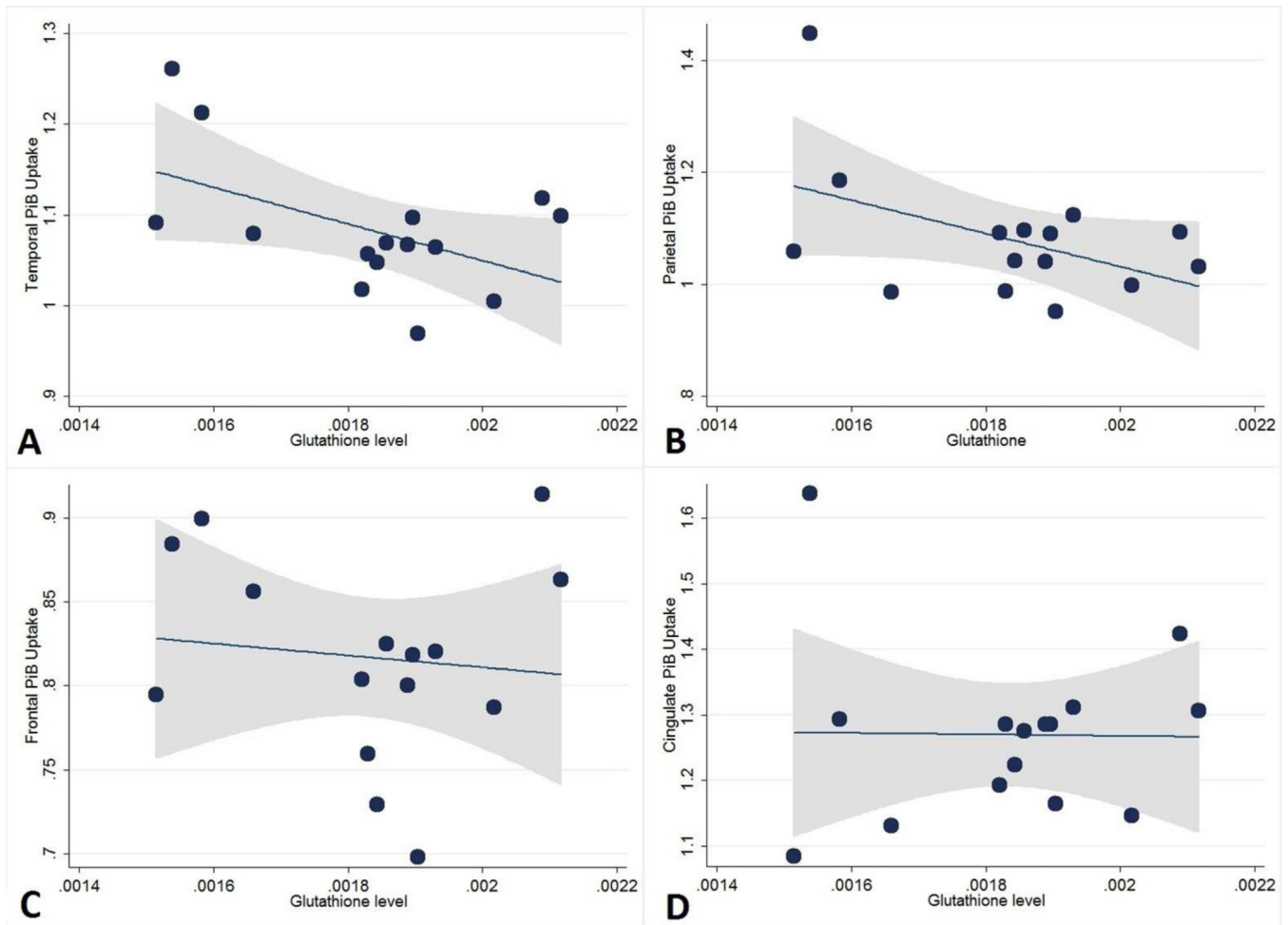
the GSH peak area; spectrum (e), residual of the difference between spectra (c) and (d).  
NAA, N-acetylaspartate; tCho, total choline; tCr, total creatine.

Author Manuscript

Author Manuscript

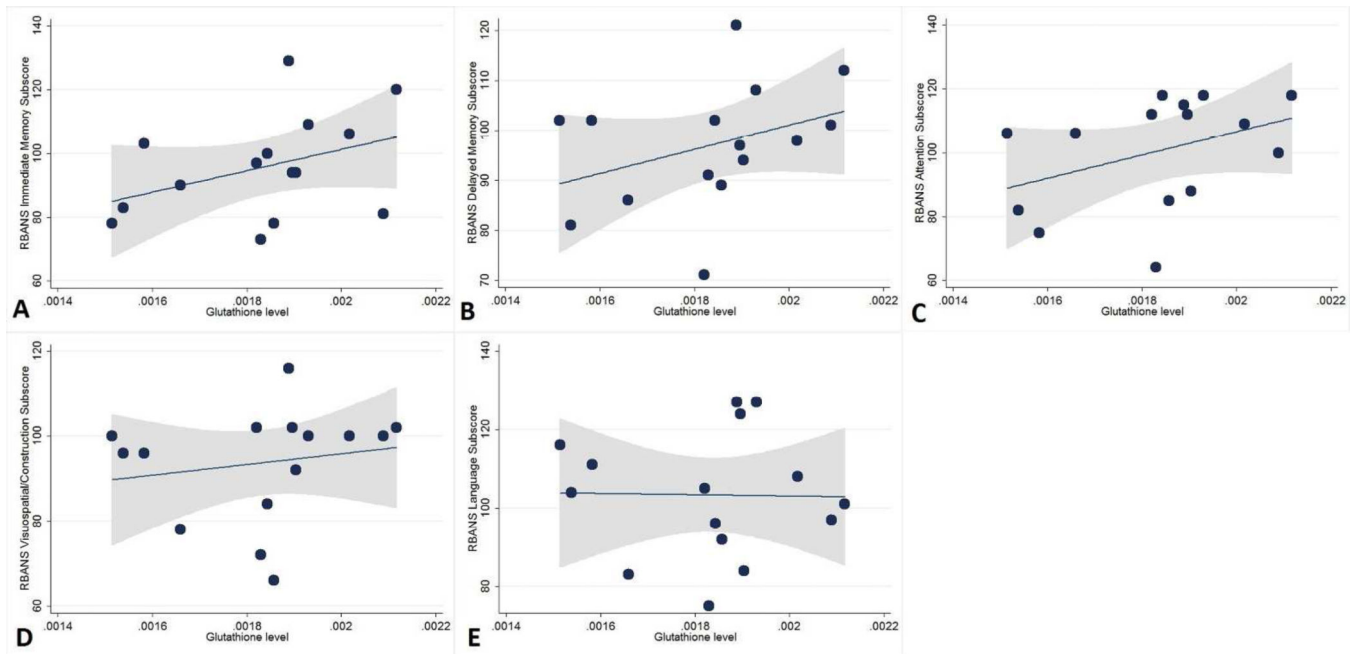
Author Manuscript

Author Manuscript



**Figure 2. Scatterplots showing the relationship between glutathione levels and brain amyloidosis by region**

Adjusting for APOE4 carrier status, lower glutathione levels were associated with higher levels of amyloidosis in the [A] temporal ( $p=0.03$ ) and marginally in the [B] parietal ( $p=0.05$ ) regions, but not in the [C] frontal ( $p=0.67$ ) or [D] cingulate ( $p=0.88$ ) regions. Fitted lines (dotted lines) and 95% confidence intervals (shaded area) also shown.



**Figure 3. Scatterplots showing the relationship between glutathione levels and scores on the Repeatable Battery for the Assessment of Neuropsychological Status (RBANS)**

There were no significant associations between higher glutathione levels and higher age-adjusted [A] immediate ( $p=0.14$ ) and [B] delayed ( $p=0.20$ ) memory subscores. Higher glutathione levels were not associated with [C] attention subscores ( $p=0.17$ ), [D] visuospatial/construction ( $p=0.55$ ), or [E] language ( $p=0.92$ ) subscores. Fitted lines (dotted lines) and 95% confidence intervals (shaded area) also shown.



**Table 1**

Results of the regression analyses showing associations between glutathione and regional brain amyloidosis.

	Regression coefficients ( $\pm$ standard errors) [p-values]			
	Frontal amyloidosis	Cingulate amyloidosis	Parietal amyloidosis	Temporal amyloidosis
Glutathione levels	-39 $\pm$ 90 [0.67]	-27 $\pm$ 174 [0.88]	-308 $\pm$ 143 [0.05]	-209 $\pm$ 85 [0.03]

Author Manuscript

Author Manuscript

Author Manuscript

Author Manuscript

Results of the regression analyses showing associations between glutathione and age-adjusted cognitive scores on the Repeatable Battery for the Assessment of Neuropsychological Status.

**Table 2**

	Regression coefficients ( $\times 10^2$ ) ( $\pm$ standard errors) [p-values]				
	Immediate Memory Subscore	Delayed Memory Subscore	Visuospatial/ Construction Subscore	Language Subscore	Attention Subscore
Glutathione Levels	317 $\pm$ 198 [0.14]	232 $\pm$ 171 [0.20]	113 $\pm$ 183 [0.55]	-24 $\pm$ 242 [0.92]	361 $\pm$ 247 [0.17]

**Table 3**

Association between Alzheimer's risk factors and glutathione levels.

	Regression coefficients ( $\times 10^{-5}$ ) ( $\pm$ standard errors) [p-values]			
	Body mass index	Exercise, hours per week	Comorbid hypertension	Comorbid hypercholesterolemia
Glutathione levels	-2.23 $\pm$ 1.2 [0.08]	-1.3 $\pm$ 1.4 [0.36]	-5.5 $\pm$ 9.9 [0.59]	-8.4 $\pm$ 11.0 [0.46]

Author Manuscript

Author Manuscript

Author Manuscript

Author Manuscript