



Published in final edited form as:

Dev Neurobiol. 2018 March ; 78(3): 283–297. doi:10.1002/dneu.22534.

The Where, What and When of Membrane Protein Degradation in Neurons

Eugene Jennifer Jin^{*,1,2}, Ferdi Ridvan Kiral^{*,1}, and Peter Robin Hiesinger^{1,§}

¹Division of Neurobiology, Freie Universität Berlin, Germany

²Graduate School of Biomedical Sciences, UT Southwestern Medical Center, Dallas, USA

Abstract

Membrane protein turnover and degradation are required for the function and health of all cells. Neurons may live for the entire lifetime of an organism and are highly polarized cells with spatially segregated axonal and dendritic compartments. Both longevity and morphological complexity represent challenges for regulated membrane protein degradation. To investigate how neurons cope with these challenges, an increasing number of recent studies investigated local, cargo-specific protein sorting and degradation at axon terminals and in dendritic processes. In this review we explore the current answers to the ensuing questions of where, what and when membrane proteins are degraded in neurons.

Introduction

Continuous synthesis and degradation through homeostatic regulation of protein turnover ensures a functional pool of proteins. Neuronal longevity and morphological complexity represent challenges for both cytosolic and membrane protein turnover (Alvarez-Castelao and Schuman, 2015; Bezprozvanny and Hiesinger, 2013; Steward and Schuman, 2003; Wang and Hiesinger, 2012). Cytosolic proteins are predominantly subject to proteasomal degradation (Bhattacharyya et al., 2014; Ciechanover, 2005; Cohen-Kaplan et al., 2016; Tai and Schuman, 2008; Yi and Ehlers, 2007). In contrast, membrane proteins are either degraded through an endo-lysosomal mechanism or autophagy (Eskelinen and Saftig, 2009; Galluzzi et al., 2017; Huber and Teis, 2016; Klionsky and Emr, 2000; Luzio et al., 2007; Schulze et al., 2009; Tooze et al., 2014). Defects in cytosolic and membrane protein degradation typically result in protein accumulation and neuronal dysfunction. Such defects can occur at synapses prior to defects in the cell body and are hallmarks of many neurodegenerative diseases (Arendt, 2009; Morales et al., 2015; Shankar and Walsh, 2009; Soto and Kerschensteiner, 2015; Wong and Cuervo, 2010).

Local protein synthesis and degradation via the proteasome has long been described in neurons (Steward and Schuman, 2003). Recent whole-proteome analyses in yeast suggest distinct subcellular localization of protein synthesis and degradation pathways, which might

[§]corresponding author: robin.hiesinger@fu-berlin.de, Freie Universitaet Berlin, Division of Neurobiology, Koenigin-Luise-Str. 1-3, 14195 Berlin, Germany.

^{*}equal contribution

indicate an evolutionary base for the compartmentalized regulation of these events in morphologically more complex cells, including neurons (Shao and Hegde, 2014). Interestingly, a recent proteomics study in neurons based on inhibition of the ubiquitin-proteasome system indicated that only a minority of synaptic proteins depend on proteasomal degradation under basal conditions (Hakim et al., 2016). However, many of the proteins for which local mRNA deposits have been found in dendrites are membrane proteins, including the NMDA and inositol 1,4,5-triphosphate (InsP3) receptors (Steward and Schuman, 2003). Here, we focus on membrane degradation and refer readers to excellent reviews on the degradation of cytoplasmic proteins by the ubiquitin-proteasome system (Alvarez-Castelao and Schuman, 2015; Bingol and Schuman, 2005; Cohen and Ziv, 2017; Kaushik and Cuervo, 2015; Labbadia and Morimoto, 2015; Tai and Schuman, 2008; Yi and Ehlers, 2007).

Membrane protein turnover is of particular importance to the maintenance of neuronal function. At the presynaptic terminal the synaptic vesicle cycle poses a formidable challenge to membrane protein turnover. Recent work has provided evidence for how dysfunctional or aging synaptic proteins are sorted for degradation (Fernandes et al., 2014; Sheehan et al., 2016; Uytterhoeven et al., 2011). Similarly, the postsynaptic compartment requires continuous cycles of endo-/exocytosis of membrane proteins, such as neurotransmitter receptors (Coussen, 2009; Santos et al., 2009). However, where the actual degradation occurs, with what cargo-specificity, and when during the development, function and aging of neurons remain challenging questions for all known mechanisms.

Canonical endolysosomal degradation and autophagy are responsible for degradation of (but not limited to) membrane proteins. In both pathways, proteins are delivered to highly acidic, degradative organelles where degradation is initiated by acidification-activated proteases (Kaur and Debnath, 2015; Lorincz et al., 2017; Luzio et al., 2007; Schink et al., 2016; Takats et al., 2016; Xu and Ren, 2015). Canonical endolysosomal degradation requires maturation of early endosome to late endosome or multivesicular body (MVB), followed by fusion with lysosomes for degradation. Ubiquitin attachment to membrane proteins serves as a signal for the endocytic internalization from the plasma membrane and is the signal for trafficking of protein from early endocytic vesicles to MVBs. Endosomal sorting complexes required for transport (ESCRT) is the core protein machinery to recognize ubiquitinated proteins in endosomes and sort them to MVBs (Henne et al., 2011; Katzmann et al., 2001).

In (macro-) autophagy, a double membrane called phagophore forms around 'to-be-degraded' cargo, such as vesicles containing membrane proteins, cytosolic proteins, protein aggregates and organelles. After cargo engulfment, autophagosomes fuse with lysosomal vesicles to form degradative autolysosomes (Coutts and La Thangue, 2016; Kraft and Martens, 2012; Nishimura et al., 2017; Wang et al., 2017; Xie and Klionsky, 2007). Despite the abundance of transmembrane proteins in both pre- and postsynaptic compartments, progress has only recently been made to address what membrane proteins are degraded by either mechanism in neurons (Ashrafi and Schwarz, 2013; Huber and Teis, 2016; Mancias and Kimmelman, 2016; Vijayan and Verstreken, 2017; Zaffagnini and Martens, 2016). More studies have focused on the dysregulation of these degradative pathways in relation to neurodegenerative diseases than their wild type maintenance function (Hara et al., 2006; Komatsu et al., 2006;

Menzies et al., 2017; Moors et al., 2017). In the following sections, we will focus on membrane degradation via the autophagosomal and endolysosomal system, and our current understanding of where, what and when these mechanisms degrade membrane proteins in neurons independent of disease-specific neurotoxic insults.

Where are membrane proteins degraded in neurons?

The distances between dendrites, the cell body and the axon tip raise questions about the spatial regulation of membrane protein sorting and degradation. Three ways to remove synaptic membrane proteins from distal axons and dendrites have been proposed (Figure 1): (1) synaptic membrane proteins may be sorted into endosomes and autophagosomes for retrograde trafficking back to the cell body, (2) membrane proteins may be sorted and degraded locally, and (3) membrane proteins may be secreted and taken up by neighboring cells for degradation. In this section, we will review current evidence for these three possibilities. How the implicated endolysosomal or autophagosomal mechanisms may operate in the different neuronal compartments will be discussed in the subsequent section.

Retrograde transport back to cell body

Neurons employ robust microtubule-dependent transport machinery to traffic proteins and organelles between the cell body, dendrites and distal axons (Maday et al., 2014). Microtubule-based axonal transport utilizes two main types of molecular motors: kinesin for plus-end directed anterograde transport (from cell body to axon terminals) and dynein-dynactin complex for minus-end directed retrograde transport (from axon terminals to cell body) (Encalada et al., 2011; Pilling et al., 2006; Schnapp and Reese, 1989). Live imaging of late endosomes, lysosomes and autophagosomes in axons revealed net retrograde trafficking, suggesting that degradation may happen in the cell body (Figure 1A) (Cheng et al., 2015; Hollenbeck, 1993; Hollenbeck and Bray, 1987; Maday et al., 2014; Parton et al., 1992). Defective retrograde transport causes dramatic accumulations of late endosomes and autophagosomes in axons as well as impaired autophagic and lysosomal degradation (Cai et al., 2010; Lloyd et al., 2012; Ravikumar et al., 2005). Such defects have been linked to late-onset, progressive motor neuron degeneration such as amyotrophic lateral sclerosis (ALS) or spinal muscular atrophy (SMA) (Chevalier-Larsen et al., 2008; Hafezparast et al., 2003; Hirokawa et al., 2010; Lai et al., 2007; Laird et al., 2008; Levy et al., 2006; Munch et al., 2004; Puls et al., 2003; Strom et al., 2008).

Autophagosomes form in the distal axons, initially exhibit bidirectional movements, but eventually switch to robust retrograde transport for degradation in the cell body (Maday and Holzbaur, 2012, 2014; Maday et al., 2014). This initial bidirectional transport is carried out when both kinesin-1 and dynein motors tightly bind to autophagosomes, but upon interaction between LC3 on autophagosome and JNK-interacting protein 1 (JIP1), kinesin-1 activation is blocked, resulting in the robust retrograde transport back to cell body (Fu et al., 2014; Maday et al., 2014). Dynein motors are recruited to autophagosomes after fusion with late endosomes (Cheng et al., 2015). In some studies, autophagosome maturation and degradation were observed only during or after retrograde transport following autophagosome biogenesis at the axon terminal (Maday and Holzbaur, 2012), consistent

with the earlier report of the progressive increase in the proportion of acidic endocytic organelles along axons closer to the soma (Overly and Hollenbeck, 1996). These findings support the prevalent idea that degradation may occur preferentially in the cell body or en route to the cell body (Figure 1A) (Maday and Holzbaur, 2016).

Late endosomes and lysosomes exhibit retrograde transport behavior distinct from autophagosomes, most likely resulting from different molecular interactions with adaptors and motor proteins. Kinesin-2 is the primary motor protein to regulate anterograde movement of late endosomes and lysosomes (Brown et al., 2005). Retrograde transport of late endosomes and lysosomes requires direct interaction between Rab7 effector protein Rab7 Interacting Lysosomal Protein (RILP) and the C-terminal region of a dynactin subunit p150 (Glued) (Johansson et al., 2007; Jordens et al., 2001; Maday et al., 2014). The highly conserved CAP-Gly domain of p150 initiates the retrograde transport from distal axons (Lloyd et al., 2012; Moughamian and Holzbaur, 2012). Snapin, a neuronal SNARE-binding protein, also regulates retrograde transport of late endosomes by tethering them to dynein (Cai et al., 2010). Unlike autophagosomes that exhibit robust retrograde transport, late endosomes and lysosomes have been reported to traffic bidirectionally with frequent pauses and directional changes in a constant tug-of-war between the opposing motors that are simultaneously present on the organelles (Bananis et al., 2004; Deacon et al., 2003; Hendricks et al., 2010; Lloyd et al., 2012; Maday et al., 2014; Muller et al., 2008).

Lysosomes containing proteases are preferentially enriched in the cell body, whereas lysosomes at distal axons have been reported to lack luminal proteases and therefore lack degradative capacity (Gowrishankar et al., 2015). In this case, late endosomes, lysosomes and autophagosomes would require to retrogradely traffic back to cell body for degradation (Figure 1A). Highly acidic pH is required for lysosomal function, and less acidic pH can therefore reduce the degradative capacity of lysosomes. A recent study reported that lysosomal pH depends on intracellular positioning, with lysosomes closer to the cell periphery being less acidic (Johnson et al., 2016), although it is not known if this is also the case for lysosomes at synapses. These studies support the need to retrograde transport of degradative organelles for degradation in the cell body.

In some vertebrates, synapses can be separated from the cell body through axons over a meter in length. Considering these distances, even if the cargos are transported at the fastest reported axonal speed (~10cm/day), it would take days for synaptic proteins to reach the cell body for degradation (Grafstein and Forman, 1980; Miller and Heidemann, 2008). Such long distances may not be an obstacle for retrograde trafficking-dependent degradation if dysfunctional cargoes do not affect normal function and health of a neuron. Alternatively, degradation and protein synthesis are often closely linked through feedback mechanisms that ensure protein homeostasis (Alvarez-Castelao and Schuman, 2015; Cajigas et al., 2010). In this case long trafficking distances would represent a challenge for mechanisms of local protein homeostasis in neurons.

Local membrane protein degradation at synapses

Neurons have to rapidly and homeostatically respond to varying conditions both during developmental axonal and dendritic growth as well as neuronal activity. Ample evidence for

local protein synthesis and proteasomal degradation in dendrites strongly suggest the autonomous regulation of protein turnover at synapses (Holt and Schuman, 2013; Pierce et al., 2001; Ramirez and Couve, 2011; Wang et al., 2010). Most studies on protein degradation in neurons have focused on proteasomal degradation, and several studies have demonstrated that proteins are degraded locally through proteasomal degradation at post-synaptic terminals (Hamilton and Zito, 2013; Speese et al., 2003; Yi and Ehlers, 2007). However, proteasomal degradation may not be responsible for the degradation of the majority of synaptic proteins in axon terminals (Hakim et al., 2016).

Similar to the proteasomal degradation machinery, membrane degradation machinery has been observed both at axon terminals and near or in dendritic spines (Frampton et al., 2012; Goo et al., 2017). Frampton et al. (2012) showed the abundance of proteins lysosomal-associated membrane protein 2 (LAMP2) and microtubule-associated protein 1 light chain 3 (LC3) in axons and axon terminals, suggesting that lysosomes and autolysosomes are located at axon terminals. Using compartmentalized rat superior cervical ganglion (SCG) neuronal cultures, they observed a significant increase of LAMP2 protein exclusively in the distal axons upon nerve growth factor (NGF) stimulation (Frampton et al., 2012). Recruitment of lysosomes to dendritic spines in an activity-dependent manner was also recently reported (Goo et al., 2017). These observations suggest that the abundance of lysosomes, and perhaps lysosomal degradation, is regulated locally at distal axon terminals, and possibly independently from lysosomes at the cell body (Figure 1B).

Several recent studies characterized mechanisms for the local regulation of autophagosome formation by synaptic proteins at axon terminals. Soukup et al. (2016) demonstrated an unexpected role of the synaptically enriched protein Endophilin A (EndoA), which was previously characterized during synaptic vesicle endocytosis (Song and Zinsmaier, 2003). Upon phosphorylation by the Parkinson's disease-associated kinase LRRK2, EndoA recruits Atg3 to the growing membrane of autophagosomes and causes it to colocalize with Atg8 (LC3) (Soukup et al., 2016). In addition, Okerlund et al. (2017) showed that the presynaptic active zone protein Bassoon selectively inhibits autophagy by interacting with Atg5 (Figure 2B). The CC2 domain of Bassoon interacts with Atg5, possibly regulating the formation of the Atg5–Atg12–Atg16 complex. Loss of Bassoon function triggers synaptic autophagy (Okerlund et al., 2017). The idea of autophagosome formation at the axon terminals is consistent with findings by Maday et al. (2012, 2014, 2016). Although local degradation of membrane proteins via autophagy has not been directly demonstrated, local degradation of mitochondria through PINK/PARKIN-mediated mitophagy at axon terminals has been reported (Ashrafi et al., 2014). As shown in this study, selective induction of mitochondrial damage by mitochondrial KillerRed (mt-Kr), a genetically encoded photosensitizer targeted to mitochondria, leads to the recruitment of autophagosomes and lysosomes to damaged mitochondria for degradation locally in the axons.

In addition to autophagy, two neuron-specific proteins that predominantly function at synaptic terminals have been reported to constitute a local, neuron-specific branch of the endolysosomal degradation system: the vesicular ATPase component V100 and the vesicle SNARE neuronal Synaptobrevin (n-Syb) (Bezprozvanny and Hiesinger, 2013; Haberman et al., 2012; Wang and Hiesinger, 2012; Williamson et al., 2010a). Both proteins were initially

characterized as synaptic vesicle proteins in synaptic vesicle exocytosis (Deitcher et al., 1998; DiAntonio et al., 1993; Hiesinger et al., 2005; Perin et al., 1991; Schoch et al., 2001). Loss of function of either V100 or n-Syb causes local sorting and degradation defects at axon terminals, which eventually lead to adult-onset neurodegeneration in *Drosophila* photoreceptors (Haberman et al., 2012; Williamson et al., 2010a). After the initial cargo overload in endosomes in both mutants, autophagy is activated as an apparent secondary, compensatory effect. It is interesting to note that both proteins are almost exclusively located at axon terminals, indicating that neurons implement an additional, neuron-specific endolysosomal sorting and degradation mechanism locally at axon terminals to meet high or specialized demand for membrane protein turnover.

Presence of membrane protein degradation machinery and identification and characterization of synaptic autophagy and endolysosomal degradation are strong indicators that membrane proteins are sorted for degradation locally at synapses (Figure 1B). However, direct demonstration of where membrane proteins are degraded in neurons remains unclear because protein degradation is mostly assayed in the entire neuron without separation of distal axons and dendrites from cell bodies (Cohen and Ziv, 2017; Cohen et al., 2013; Price et al., 2010; Sheehan et al., 2016). Protein half-lives in neurons are studied using isotopic labeling with amino acids, such as Stable Isotope Labelling with Amino acids in Cell culture (SILAC), followed by mass spectrometry (MS) in mouse or rat cortical neurons (Cohen et al., 2013; Price et al., 2010). Activity-dependent protein degradation in neurons have been demonstrated biochemically with western blot analyses before and after neural activation in cultured rat hippocampal or cortical neuron (Sheehan et al., 2016; Shehata et al., 2012; Widagdo et al., 2015). Separation of neuronal compartments can be achieved using microfluidic culture devices (Park et al., 2006; Taylor et al., 2005; Taylor et al., 2010; Taylor and Jeon, 2010; Taylor et al., 2006). Such methods have been used to demonstrate local proteasomal degradation in growth cones (Deglincerti et al., 2015), and local degradation of damaged mitochondria by autophagy in axons (Ashrafi et al., 2014).

Release into neighboring cells

Neurons can rid themselves of membrane proteins and other cargo through the release of extracellular vesicles (EVs) followed by uptake in a neighboring cell (Figure 1C) (Budnik et al., 2016; Raposo and Stoorvogel, 2013; Simons and Raposo, 2009). Two major types of EVs are exosomes and microvesicles. Exosomes are intraluminal vesicles (ILVs) inside multivesicular bodies (MVBs) that are released into the extracellular space upon direct fusion of MVBs with the plasma membrane. Microvesicles are vesicles that form by an outward budding of plasma membrane. As a result, microvesicles are typically larger (100 nm to 1 μ m in diameter) than exosomes (30–100 nm in diameter) (Colombo et al., 2014). The content that can be released as EVs is not limited to membrane proteins and also includes mRNA, cytosolic proteins and lipids. Two general functions of exosome secretion have been proposed: degradation and intercellular communication. Here, we focus on what is known about degradation of membrane proteins by neighboring cells, while other functions of exosomes are presented and comprehensively reviewed elsewhere (Budnik et al., 2016; Fruhbeis et al., 2012; Lotvall and Valadi, 2007; Raposo and Stoorvogel, 2013; Simons and Raposo, 2009).

Exosome secretion from neurons was first reported in mature cortical neurons as well as *in vivo* at the *Drosophila* neuromuscular junction (NMJ) (Faure et al., 2006; Korkut et al., 2009). Since then, many studies have focused on the release of disease-associated proteins and aggregates, such as tau, amyloid-beta peptides, huntingtin and superoxide dismutase-1 (SOD-1), from neurons via exosomes (Deng et al., 2017; Saman et al., 2012; Yuyama et al., 2012). It was recently demonstrated that the synaptic vesicle protein Cysteine String Protein (CSP α) mediates the release of exosomes containing polyglutamine expanded protein 72Q huntingtin and superoxide dismutase-1 (SOD-1) (Deng et al., 2017). Consequently, loss-of-function of CSP α in *Drosophila* and *C.elegans* mutants demonstrate uncoordinated movements, neurodegeneration, and early lethality possibly due to defective release of 72Q huntingtin and SOD-1 (Kashyap et al., 2014; Zinsmaier et al., 1994).

EVs released from a neuron can be taken up by another neuron, glia or any other neighboring cells. Synaptic activity was shown to bias the binding of exosomes to neighboring neurons rather than glial cells (Chivet et al., 2014). The EVs can then be degraded in any of these recipient cells by fusing directly with the plasma membrane followed by endocytosis and endolysosomal degradation. Amyloid-beta peptides released via neuronal exosomes were reported to be cleared via microglia (Yuyama et al., 2012). Exosomes may also be released into other neighboring cells, including muscles at the neuromuscular junction (NMJ) (Budnik et al., 2016) and epithelial cells in the case of *Drosophila* sensory class IV dendritic arborization (da) neurons (Han et al., 2014). Furthermore, clearance of degenerating dendrite fragments of *Drosophila* class IV da neuron was reported for the neighboring epidermal cells (Han et al., 2014). In contrast, it is less clear whether synaptic membrane proteins are degraded in neighboring cells.

What membrane proteins and mechanisms are implicated in neuronal degradation

Autophagosomes and endolysosomal compartments are available in distal axons and dendrites. Recent studies have started to identify what cargos may be degraded by these mechanisms, but the list of membrane proteins tested so far is relatively short (Figure 2). In this section, we will discuss what is currently known about what cargoes are degraded by what membrane protein degradation mechanism in neurons.

Synaptic autophagy

Autophagy is highly conserved from yeast to mammals, and most of our knowledge is derived from studies in nonneuronal cells or neuronal cell bodies (Ohsumi, 2014). Unlike nonneuronal cells, primary cultured neurons may not upregulate autophagy in response to starvation, but instead employ constitutive autophagy to maintain protein homeostasis (Maday and Holzbaur, 2016). Several recent studies focused on the molecular characterization of neuronal autophagy, particularly at presynaptic terminals (Okerlund et al., 2017; Soukup et al., 2016; Vanhauwaert et al., 2017; Vijayan and Verstreken, 2017).

Macroautophagy is well characterized for its ability to bulk degrade membrane proteins, organelles, cytosolic proteins and protein aggregates. The recent observation of synaptic

vesicles in pre-autophagosomal structures in *Drosophila* NMJ and cultured rat hippocampal neuron cell bodies by Binotti et al. (2015) suggests that synaptic vesicle proteins may be degraded as bulk cargo, although degradation was not directly shown (Figure 2B). They demonstrated that a small Rab GTPase Rab26, which is predominantly localized to synaptic regions in *Drosophila* (Chan et al., 2011), interacts with Atg16L and directs synaptic vesicles to pre-autophagosomal structures (Binotti et al., 2015). Rab26 overexpression resulted in accumulation of synaptic vesicles in preautophagosomes in *Drosophila* NMJ. This suggests a mechanism that directly engulfs the entire synaptic vesicles for degradation without more specific protein sorting.

Postsynaptic membrane proteins such as GABA and AMPA receptor subunits are reported to be degraded through autophagy, although where these receptors are degraded still remains unknown (Figure 2B) (Rowland et al., 2006; Shehata et al., 2012; Widagdo et al., 2015). Degradation of AMPA receptor subunits GluA1 and GluA2, assayed by western blot analyses of cultured rat hippocampal or cortical neurons, was correlated with the autophagosomal or lysosomal markers LC3-II and LAMP1 respectively (Shehata et al., 2012; Widagdo et al., 2015). Moreover, inhibition of autophagy with Wortmannin prevented AMPA receptor degradation (Shehata et al., 2012). In *C. elegans* neuromuscular system, internalized GABA receptors were reported to colocalize with autophagosomes (Rowland et al., 2006). Loss of both GABA and acetylcholine motor neuron innervations in the post-synapse, the dorsal muscle, caused internalization and sorting of only GABA, but not acetylcholine, receptors to autophagosomes in the dorsal muscle. This suggests that autophagy may employ cargo-specific sorting for degradation postsynaptically.

Canonical endolysosomal degradation

In addition to autophagy, neurons share canonical endolysosomal machinery with non-neuronal cells. In endolysosomal degradation, membrane proteins are internalized through endocytosis and subsequently progress through late endosomal and lysosomal stages. Genetic studies in yeast, worms, flies, and mammals have identified a set of conserved and essential proteins that function in the endolysosomal progressions and lysosome biogenesis. The two ubiquitously expressed small Rab GTPases, Rab5 and Rab7, are key regulators of endocytosis and endosomal maturation, respectively (Figure 2B) (Bucci et al., 1992; Vitelli et al., 1997). The ESCRT pathway is the core machinery that sort and direct ubiquitinated proteins for degradation (Henne et al., 2011; Katzmann et al., 2001; Schuh and Audhya, 2014). Membrane proteins can be ubiquitinated by the sequential action of E1 (ubiquitin-activating enzymes), E2 (ubiquitin-carrier/conjugating enzymes) and E3 (ubiquitin ligases). Ubiquitinated membrane proteins are then recognized by the ESCRT-0 complex, which results in subsequent recruitment of ESCRT-I, -II and -III for delivery of the ubiquitinated protein into MVB by intraluminal vesicle (ILV) formation (Henne et al., 2011; Schuh and Audhya, 2014). Numerous regulatory and tethering complexes are required for endolysosomal progression, including the CORVET and HOPS, which are reviewed in detail elsewhere (Balderhaar and Ungermann, 2013; Luzio et al., 2014; Solinger and Spang, 2013).

Rab7 is expressed ubiquitously in all cell types of an organism, but its early expression is strongly enriched in the nervous system in *Drosophila* (Chan et al., 2011). Missense

exists in the postsynaptic terminals, and whether retrograde trafficking of degradative vesicles plays a role.

Neuron-specific endolysosomal degradation

Autophagy and the Sky/Rab35-dependent endolysosomal mechanism exist in all cells, but are likely to function in a specialized manner at synaptic terminals (Fernandes et al., 2014; Vijayan and Verstreken, 2017). In addition, at least two neuron-specific integral membrane proteins function in endolysosomal sorting and degradation based on findings in *Drosophila*: the vesicle SNARE neuronal Synaptobrevin (n-Syb) and the vesicle ATPase component V100 (Haberman et al., 2012; Williamson et al., 2010a). Both proteins have previously been characterized as synaptic vesicle proteins (Perin et al., 1991; Schoch et al., 2001). Loss of either protein in *Drosophila* photoreceptor neurons leads to endolysosomal membrane accumulations at axon terminals, indicating a link between the synaptic vesicle cycle and synaptic membrane turnover (Bezprozvanny and Hiesinger, 2013; Haberman et al., 2012; Wang and Hiesinger, 2012; Williamson et al., 2010a). However, it is currently unclear whether this neuron-specific branch of the endolysosomal system has a cargo-specificity that differs from the canonical endolysosomal degradation. Several plasma membrane receptors have been shown to accumulate in the *v100* mutant brains (Williamson et al., 2010b). In the *v100* mutant photoreceptor neurons, different membrane receptors accumulated in cell bodies versus axon terminals, suggesting that the neuron-specific branch of the endolysosomal system may sort and degrade different membrane proteins in axon terminals versus in the cell body.

When are membrane proteins degraded in neurons?

Membrane protein turnover plays roles during neuronal development, function and maintenance. Constitutive membrane protein degradation may occur during all stages of a neuron's lifetime and is not regulated by neuronal activity (Figure 2A). In contrast, activity-dependent turnover and degradation is a direct function of neuronal activity levels and is relevant to function and maintenance (Figure 2B). In this last section, we highlight the differences between these mechanisms during the life of a neuron.

Constitutive and developmental degradation

Activity-independent, constitutive protein degradation has been highlighted recently (Cohen and Ziv, 2017; Maday and Holzbaur, 2016). Synaptic vesicle proteins may undergo constitutive turnover and degradation already during development (Figure 2A). Synaptotagmin 1 (Syt1), a calcium sensor necessary for synaptic vesicle release, and n-Syb are already present at axon terminals prior to synaptogenesis (Hiesinger et al., 1999; Williamson et al., 2010b). While synaptic autophagy has been reported as a constitutive degradation mechanism (Maday and Holzbaur, 2016), it remains unclear whether this mechanism degrades synaptic vesicle proteins during development.

Membrane protein degradation has been implicated in neural development, including axonal growth, synapse elimination and pruning (Wojnacki and Galli, 2016; Yogev and Shen, 2014). Spatiotemporal control of developmentally required membrane receptor availability

on the surface of axon terminals is regulated through protein turnover. Defects in the endolysosomal system lead to accumulations of undegraded membrane proteins before and after synaptogenesis (Wang et al., 2013). Mutations in the ubiquitous endosomal maturation factor *rab7* in *Drosophila* surprisingly do not affect embryo and larval development (Cherry et al., 2013). However, membrane proteins slowly accumulate during development and autophagy is upregulated as a consequence. During later adult stages, the impaired clearance of membrane proteins in the developing organism causes neurodegeneration. *Drosophila* photoreceptor neurons deficient for *rab7* complete development and function normally as long as they are not stimulated (Cherry et al., 2013). These findings indicate that constitutive *rab7*-dependent endolysosomal turnover is not required for development of these cells. Similarly, mutations in the neuron-specific genes *n-Syb* and *V100* lead to accumulation of early endosomes and autophagosomes during development, but do not affect photoreceptor neuron development (Cherry et al., 2013; Haberman et al., 2012; Williamson et al., 2010a; Williamson et al., 2010b). Timing may be critical: since *Drosophila* photoreceptor neurons develop over a timespan of only a few days, 'debris' accumulation may not affect these fast developing neurons as profoundly as neurons with longer development.

Developmental elimination of excess synapses through pruning is reported to occur via autophagy. Components of autophagic machinery begin to express and localize to axons in early development (Song et al., 2008). Blocking autophagosome formation by *Atg7* knockdown causes overextension of axons, whereas activation of autophagy by rapamycin suppresses axonal extension (Ban et al., 2013). In developing motor neuron axon terminals, the NMJ, excessive synapses are eliminated through engulfment of retracting axon tips by the surrounding glial cells, and the degrading axonal membranes were associated with LC3-positive autolysosomes (Song et al., 2008). On the postsynaptic site, hyperactivated mTOR, hence impaired autophagy, has been linked to reduced developmental dendritic pruning causing autism-like neurodevelopmental disorders. mTOR inhibition by rapamycin corrects developmental spine pruning defects in mice mutant for autism-causing *Tsc2* (Tang et al., 2014).

Activity-dependent degradation

Activity levels of neurons have a substantial impact on the turnover rate of SV proteins and transmembrane receptors on both the pre- and post-synaptic side. The Sky/Rab35 mechanism is activity-dependent, while a possible constitutive role has not yet been shown. As described above, sky was originally discovered in *Drosophila* (Uytterhoeven et al., 2011) and the Rab35 mechanism was recently shown to function activity-dependently in rat hippocampal neurons as well (Sheehan and Waites, 2017; Sheehan et al., 2016). Sheehan et al. compared protein levels before and after treatment of cultured neurons with either activity enhancer or blocker. Neuronal activity induced Rab35 activation and binding to the ESCRT-0 protein Hrs, which they identified as a novel Rab35 effector. Their findings demonstrate that the Rab35/ESCRT pathway facilitates the activity-dependent removal of SV proteins, to maintain presynaptic protein homeostasis (Sheehan and Waites, 2017; Sheehan et al., 2016). It remains to be shown to what extent individual proteins or organelles are recognized as dysfunctional, or, alternatively, whether continuous turnover of proteins or organelles irrespective of their functional state may suffice to ensure neuronal health.

Prolonged neuronal activity also induces autophagy at both pre- and post-synaptic sites. Soukup et al. (2016) induced action potentials in motor neurons by the overexpression of transient receptor potential cation channel A1 (TrpA1) and observed increased formation of Atg8-positive autophagosomes and LAMP2-positive lysosomes at presynaptic terminals (Soukup et al., 2016). On the other hand, neuronal stimulation in rat hippocampal neurons induces autophagosome formation both pre- and post-synaptically and possibly regulates the degradation of GABA and AMPA receptors (Shehata et al., 2012; Widagdo et al., 2015).

Activity-dependent regulation of the density and number of AMPA and kainate receptors on the post-synaptic membrane is a key feature of long-term changes on synaptic strength. Also, long-term memory formation from unstable short-term memory traces depends on rapid spatiotemporal changes of synaptic protein composition (Fioravante and Byrne, 2011; Jarome and Helmstetter, 2014). Activity-dependent sorting of AMPAR to lysosomes has been reported (Ehlers, 2000; Schwarz et al., 2010; Widagdo and Anggono, 2015; Widagdo et al., 2015). More specifically, activity-dependent ubiquitination of AMPAR results in sorting into LAMP1-positive lysosomes for degradation (Ehlers, 2000; Schwarz et al., 2010; Widagdo et al., 2015). In a similar manner, intense activation of kainate receptors causes a PKC-dependent, but Ca^{2+} -independent, internalization into lysosomes for degradation (Martin and Henley, 2004). Intriguingly, recruitment of lysosomes to dendritic spines was reported to be activity-dependent (Goo et al., 2017). In sum, neuronal activity regulates the intracellular trafficking and degradation of post-synaptic membrane proteins to allow rapid spatiotemporal changes of synaptic protein composition, which has been implicated in long term memory formation (Fioravante and Byrne, 2011; Jarome and Helmstetter, 2014). However, it remains unclear in most cases, whether degradation occurs locally at the synapse or during and after retrograde trafficking back to the cell body.

Conclusion

In this review we highlighted recent advances and open questions on neuronal membrane protein degradation. Recent studies have beautifully shown that specific membrane proteins are sorted for degradation by different mechanisms, at different places in neurons and during different times. However, our survey of the *where*, *what* and *when* of neuronal membrane protein degradation highlights key open questions:

1. *Where?* While local sorting has been demonstrated for all neuronal compartments, the question of local degradation versus retrograde trafficking remains largely unanswered.
2. *What?* The cargo-specificity of both autophagy and endolysosomal degradation mechanism is largely unknown and may vary in the different neuronal compartments.
3. *When?* Both endolysosomal and autophagic degradation have been proposed as constitutive and activity-dependent mechanisms in various contexts. When these mechanisms are activated in neurons will require both *in vitro* and *in vivo* studies.

Answers to these questions are complicated by interdependencies: axonal and dendritic terminals are likely to employ different membrane sorting and degradation mechanisms as a function of developmental and functional stages. Conversely, the same mechanism, e.g. autophagy, has been proposed to function differently, and possibly with altered cargo-specificity, in different cellular compartments. Biochemical analyses of such spatiotemporally segregated and interdependent processes are difficult and are dependent on technological advances such as microfluidic chambers and isolation of the different neuronal compartments. Primary neuronal culture is an excellent choice for cell biological studies using both biochemistry and imaging, but may not always reflect normal developmental and functional context. Finally, *in vivo* systems are typically less accessible. As always, a combination of these techniques is most likely to yield meaningful solutions, as long as each system is interpreted relative to other approaches and its own limitations.

Acknowledgments

We would like to thank all members of the Hiesinger lab for discussions. This work was supported by the Deutsche Forschungsgemeinschaft (SFB958 and SFB/TRR186), the NeuroCure Cluster Berlin, grants from the National Institute of Health (RO1EY018884, RO1EY023333), and the Muscular Dystrophy Association of the USA to PRH. EJJ was supported by the NIH (T32 NS069562, F31 NS084774) and the DFG (SFB958).

References

- Alvarez-Castelao B, Schuman EM. The Regulation of Synaptic Protein Turnover. *The Journal of biological chemistry*. 2015; 290:28623–28630. [PubMed: 26453306]
- Arendt T. Synaptic degeneration in Alzheimer's disease. *Acta neuropathologica*. 2009; 118:167–179. [PubMed: 19390859]
- Ashrafi G, Schlehe JS, LaVoie MJ, Schwarz TL. Mitophagy of damaged mitochondria occurs locally in distal neuronal axons and requires PINK1 and Parkin. *The Journal of cell biology*. 2014; 206:655–670. [PubMed: 25154397]
- Ashrafi G, Schwarz TL. The pathways of mitophagy for quality control and clearance of mitochondria. *Cell death and differentiation*. 2013; 20:31–42. [PubMed: 22743996]
- Balderhaar HJ, Ungermann C. CORVET and HOPS tethering complexes - coordinators of endosome and lysosome fusion. *J Cell Sci*. 2013; 126:1307–1316. [PubMed: 23645161]
- Ban BK, Jun MH, Ryu HH, Jang DJ, Ahmad ST, Lee JA. Autophagy negatively regulates early axon growth in cortical neurons. *Molecular and cellular biology*. 2013; 33:3907–3919. [PubMed: 23918799]
- Banani S, Nath S, Gordon K, Satir P, Stockert RJ, Murray JW, Wolkoff AW. Microtubule-dependent movement of late endocytic vesicles in vitro: requirements for Dynein and Kinesin. *Mol Biol Cell*. 2004; 15:3688–3697. [PubMed: 15181154]
- Bezprozvanny I, Hiesinger PR. The synaptic maintenance problem: membrane recycling, Ca²⁺ homeostasis and late onset degeneration. *Mol Neurodegener*. 2013; 8:23. [PubMed: 23829673]
- Bhattacharyya S, Yu H, Mim C, Matouschek A. Regulated protein turnover: snapshots of the proteasome in action. *Nature reviews. Molecular cell biology*. 2014; 15:122–133. [PubMed: 24452470]
- Bingol B, Schuman EM. Synaptic protein degradation by the ubiquitin proteasome system. *Current opinion in neurobiology*. 2005; 15:536–541. [PubMed: 16150592]
- Binotti B, Pavlos NJ, Riedel D, Wenzel D, Vorbruggen G, Schalk AM, Kuhnel K, Boyken J, Erck C, Martens H, Chua JJ, Jahn R. The GTPase Rab26 links synaptic vesicles to the autophagy pathway. *Elife*. 2015; 4:e05597. [PubMed: 25643395]
- Brown CL, Maier KC, Stauber T, Ginkel LM, Wordeman L, Vernos I, Schroer TA. Kinesin-2 is a motor for late endosomes and lysosomes. *Traffic*. 2005; 6:1114–1124. [PubMed: 16262723]

- Bucci C, Parton RG, Mather IH, Stunnenberg H, Simons K, Hoflack B, Zerial M. The small GTPase rab5 functions as a regulatory factor in the early endocytic pathway. *Cell*. 1992; 70:715–728. [PubMed: 1516130]
- Budnik V, Ruiz-Canada C, Wendler F. Extracellular vesicles round off communication in the nervous system. *Nat Rev Neurosci*. 2016; 17:160–172. [PubMed: 26891626]
- Cai Q, Lu L, Tian JH, Zhu YB, Qiao H, Sheng ZH. Snapin-regulated late endosomal transport is critical for efficient autophagy-lysosomal function in neurons. *Neuron*. 2010; 68:73–86. [PubMed: 20920792]
- Cajigas JJ, Will T, Schuman EM. Protein homeostasis and synaptic plasticity. *The EMBO journal*. 2010; 29:2746–2752. [PubMed: 20717144]
- Chan CC, Scoggin S, Wang D, Cherry S, Dembo T, Greenberg B, Jin EJ, Kuey C, Lopez A, Mehta SQ, Perkins TJ, Brankatschk M, Rothenfluh A, Buszczak M, Hiesinger PR. Systematic discovery of Rab GTPases with synaptic functions in *Drosophila*. *Curr Biol*. 2011; 21:1704–1715. [PubMed: 22000105]
- Cheng XT, Zhou B, Lin MY, Cai Q, Sheng ZH. Axonal autophagosomes recruit dynein for retrograde transport through fusion with late endosomes. *The Journal of cell biology*. 2015; 209:377–386. [PubMed: 25940348]
- Cherry S, Jin EJ, Ozel MN, Lu Z, Agi E, Wang D, Jung WH, Epstein D, Meinertzhagen IA, Chan CC, Hiesinger PR. Charcot-Marie-Tooth 2B mutations in rab7 cause dosage-dependent neurodegeneration due to partial loss of function. *Elife*. 2013; 2:e01064. [PubMed: 24327558]
- Chevalier-Larsen ES, Wallace KE, Pennise CR, Holzbaur EL. Lysosomal proliferation and distal degeneration in motor neurons expressing the G59S mutation in the p150Glued subunit of dynactin. *Human molecular genetics*. 2008; 17:1946–1955. [PubMed: 18364389]
- Chivet M, Javellet C, Laulagnier K, Blot B, Hemming FJ, Sadoul R. Exosomes secreted by cortical neurons upon glutamatergic synapse activation specifically interact with neurons. *Journal of extracellular vesicles*. 2014; 3:24722. [PubMed: 25398455]
- Ciechanover A. Intracellular protein degradation: from a vague idea thru the lysosome and the ubiquitin-proteasome system and onto human diseases and drug targeting. *Cell death and differentiation*. 2005; 12:1178–1190. [PubMed: 16094394]
- Cogli L, Progida C, Lecci R, Bramato R, Kruttgen A, Bucci C. CMT2B-associated Rab7 mutants inhibit neurite outgrowth. *Acta neuropathologica*. 2010; 120:491–501. [PubMed: 20464402]
- Cogli L, Progida C, Thomas CL, Spencer-Dene B, Donno C, Schiavo G, Bucci C. Charcot-Marie-Tooth type 2B disease-causing RAB7A mutant proteins show altered interaction with the neuronal intermediate filament peripherin. *Acta neuropathologica*. 2013; 125:257–272. [PubMed: 23179371]
- Cohen-Kaplan V, Livneh I, Avni N, Cohen-Rosenzweig C, Ciechanover A. The ubiquitin-proteasome system and autophagy: Coordinated and independent activities. *The international journal of biochemistry & cell biology*. 2016; 79:403–418. [PubMed: 27448843]
- Cohen LD, Ziv NE. Recent insights on principles of synaptic protein degradation. *F1000Research*. 2017; 6:675. [PubMed: 28620464]
- Cohen LD, Zuchman R, Sorokina O, Muller A, Dieterich DC, Armstrong JD, Ziv T, Ziv NE. Metabolic turnover of synaptic proteins: kinetics, interdependencies and implications for synaptic maintenance. *PLoS one*. 2013; 8:e63191. [PubMed: 23658807]
- Colombo M, Raposo G, Thery C. Biogenesis, secretion, and intercellular interactions of exosomes and other extracellular vesicles. *Annual review of cell and developmental biology*. 2014; 30:255–289.
- Coussen F. Molecular determinants of kainate receptor trafficking. *Neuroscience*. 2009; 158:25–35. [PubMed: 18358623]
- Coutts AS, La Thangue NB. Regulation of actin nucleation and autophagosome formation. *Cellular and molecular life sciences : CMLS*. 2016; 73:3249–3263. [PubMed: 27147468]
- Deacon SW, Serpinskaya AS, Vaughan PS, Lopez Fanarraga M, Vernos I, Vaughan KT, Gelfand VI. Dynactin is required for bidirectional organelle transport. *The Journal of cell biology*. 2003; 160:297–301. [PubMed: 12551954]
- Deglincerti A, Liu Y, Colak D, Hengst U, Xu G, Jaffrey SR. Coupled local translation and degradation regulate growth cone collapse. *Nature communications*. 2015; 6:6888.

- Deitcher DL, Ueda A, Stewart BA, Burgess RW, Kidokoro Y, Schwarz TL. Distinct requirements for evoked and spontaneous release of neurotransmitter are revealed by mutations in the *Drosophila* gene neuronal-synaptobrevin. *The Journal of neuroscience : the official journal of the Society for Neuroscience*. 1998; 18:2028–2039. [PubMed: 9482790]
- Deng J, Koutras C, Donnelier J, Alshehri M, Fotouhi M, Girard M, Casha S, McPherson PS, Robbins SM, Braun JEA. Neurons Export Extracellular Vesicles Enriched in Cysteine String Protein and Misfolded Protein Cargo. *Scientific reports*. 2017; 7:956. [PubMed: 28424476]
- DiAntonio A, Burgess RW, Chin AC, Deitcher DL, Scheller RH, Schwarz TL. Identification and characterization of *Drosophila* genes for synaptic vesicle proteins. *The Journal of neuroscience : the official journal of the Society for Neuroscience*. 1993; 13:4924–4935. [PubMed: 8229205]
- Ehlers MD. Reinsertion or degradation of AMPA receptors determined by activity-dependent endocytic sorting. *Neuron*. 2000; 28:511–525. [PubMed: 11144360]
- Encalada SE, Szpankowski L, Xia CH, Goldstein LS. Stable kinesin and dynein assemblies drive the axonal transport of mammalian prion protein vesicles. *Cell*. 2011; 144:551–565. [PubMed: 21335237]
- Eskelinen EL, Saftig P. Autophagy: a lysosomal degradation pathway with a central role in health and disease. *Biochimica et biophysica acta*. 2009; 1793:664–673. [PubMed: 18706940]
- Faure J, Lachenal G, Court M, Hirrlinger J, Chatellard-Causse C, Blot B, Grange J, Schoehn G, Goldberg Y, Boyer V, Kirchhoff F, Raposo G, Garin J, Sadoul R. Exosomes are released by cultured cortical neurones. *Molecular and cellular neurosciences*. 2006; 31:642–648. [PubMed: 16446100]
- Fernandes AC, Uytterhoeven V, Kuenen S, Wang YC, Slabbaert JR, Swerts J, Kasprovicz J, Aerts S, Verstreken P. Reduced synaptic vesicle protein degradation at lysosomes curbs TBC1D24/sky-induced neurodegeneration. *The Journal of cell biology*. 2014; 207:453–462. [PubMed: 25422373]
- Fioravante D, Byrne JH. Protein degradation and memory formation. *Brain research bulletin*. 2011; 85:14–20. [PubMed: 21078374]
- Fischer B, Luthy K, Paesmans J, De Koninck C, Maes I, Swerts J, Kuenen S, Uytterhoeven V, Verstreken P, Versee W. Skywalker-TBC1D24 has a lipid-binding pocket mutated in epilepsy and required for synaptic function. *Nat Struct Mol Biol*. 2016; 23:965–973. [PubMed: 27669036]
- Frampton JP, Guo C, Pierchala BA. Expression of axonal protein degradation machinery in sympathetic neurons is regulated by nerve growth factor. *Journal of neuroscience research*. 2012; 90:1533–1546. [PubMed: 22411744]
- Fruhbeis C, Frohlich D, Kramer-Albers EM. Emerging roles of exosomes in neuron-glia communication. *Frontiers in physiology*. 2012; 3:119. [PubMed: 22557979]
- Fu MM, Nirschl JJ, Holzbaur EL. LC3 binding to the scaffolding protein JIP1 regulates processive dynein-driven transport of autophagosomes. *Developmental cell*. 2014; 29:577–590. [PubMed: 24914561]
- Galluzzi L, Baehrecke EH, Ballabio A, Boya P, Bravo-San Pedro JM, Cecconi F, Choi AM, Chu CT, Codogno P, Colombo MI, Cuervo AM, Debnath J, Deretic V, Dikic I, Eskelinen EL, Fimia GM, Fulda S, Gewirtz DA, Green DR, Hansen M, Harper JW, Jaattela M, Johansen T, Juhasz G, Kimmelman AC, Kraft C, Ktistakis NT, Kumar S, Levine B, Lopez-Otin C, Madeo F, Martens S, Martinez J, Melendez A, Mizushima N, Munz C, Murphy LO, Penninger JM, Piacentini M, Reggiori F, Rubinsztein DC, Ryan KM, Santambrogio L, Scorrano L, Simon AK, Simon HU, Simonsen A, Tavernarakis N, Tooze SA, Yoshimori T, Yuan J, Yue Z, Zhong Q, Kroemer G. Molecular definitions of autophagy and related processes. *The EMBO journal*. 2017; 36:1811–1836. [PubMed: 28596378]
- Goo MS, Sancho L, Slepak N, Boassa D, Deerinck TJ, Ellisman MH, Bloodgood BL, Patrick GN. Activity-dependent trafficking of lysosomes in dendrites and dendritic spines. *The Journal of cell biology*. 2017
- Gowrishankar S, Yuan P, Wu Y, Schrag M, Paradise S, Grutzendler J, De Camilli P, Ferguson SM. Massive accumulation of luminal protease-deficient axonal lysosomes at Alzheimer's disease amyloid plaques. *Proceedings of the National Academy of Sciences of the United States of America*. 2015; 112:E3699–3708. [PubMed: 26124111]

- Grafstein B, Forman DS. Intracellular transport in neurons. *Physiol Rev.* 1980; 60:1167–1283. [PubMed: 6159657]
- Haberman A, Williamson WR, Epstein D, Wang D, Rina S, Meinertzhagen IA, Hiesinger PR. The synaptic vesicle SNARE neuronal Synaptobrevin promotes endolysosomal degradation and prevents neurodegeneration. *J Cell Biol.* 2012; 196:261–276. [PubMed: 22270918]
- Hafezparast M, Klocke R, Ruhrberg C, Marquardt A, Ahmad-Annuar A, Bowen S, Lalli G, Witherden AS, Hummerich H, Nicholson S, Morgan PJ, Oozageer R, Priestley JV, Averill S, King VR, Ball S, Peters J, Toda T, Yamamoto A, Hiraoka Y, Augustin M, Korthaus D, Wattler S, Wabnitz P, Dickneite C, Lampel S, Boehme F, Peraus G, Popp A, Rudelius M, Schlegel J, Fuchs H, Hrabe de Angelis M, Schiavo G, Shima DT, Russ AP, Stumm G, Martin JE, Fisher EM. Mutations in dynein link motor neuron degeneration to defects in retrograde transport. *Science.* 2003; 300:808–812. [PubMed: 12730604]
- Hakim V, Cohen LD, Zuchman R, Ziv T, Ziv NE. The effects of proteasomal inhibition on synaptic proteostasis. *The EMBO journal.* 2016; 35:2238–2262. [PubMed: 27613546]
- Hamilton AM, Zito K. Breaking it down: the ubiquitin proteasome system in neuronal morphogenesis. *Neural Plast.* 2013; 2013:196848. [PubMed: 23476809]
- Han C, Song Y, Xiao H, Wang D, Franc NC, Jan LY, Jan YN. Epidermal cells are the primary phagocytes in the fragmentation and clearance of degenerating dendrites in *Drosophila*. *Neuron.* 2014; 81:544–560. [PubMed: 24412417]
- Hara T, Nakamura K, Matsui M, Yamamoto A, Nakahara Y, Suzuki-Migishima R, Yokoyama M, Mishima K, Saito I, Okano H, Mizushima N. Suppression of basal autophagy in neural cells causes neurodegenerative disease in mice. *Nature.* 2006; 441:885–889. [PubMed: 16625204]
- Hendricks AG, Perlson E, Ross JL, Schroeder HW, Tokito M 3rd, Holzbaur EL. Motor coordination via a tug-of-war mechanism drives bidirectional vesicle transport. *Current biology : CB.* 2010; 20:697–702. [PubMed: 20399099]
- Henne WM, Buchkovich NJ, Emr SD. The ESCRT pathway. *Developmental cell.* 2011; 21:77–91. [PubMed: 21763610]
- Heuser JE, Reese TS. Evidence for recycling of synaptic vesicle membrane during transmitter release at the frog neuromuscular junction. *The Journal of cell biology.* 1973; 57:315–344. [PubMed: 4348786]
- Hiesinger PR, Fayyazuddin A, Mehta SQ, Rosenmund T, Schulze KL, Zhai RG, Verstreken P, Cao Y, Zhou Y, Kunz J, Bellen HJ. The v-ATPase V0 subunit a1 is required for a late step in synaptic vesicle exocytosis in *Drosophila*. *Cell.* 2005; 121:607–620. [PubMed: 15907473]
- Hiesinger PR, Reiter C, Schau H, Fischbach KF. Neuropil pattern formation and regulation of cell adhesion molecules in *Drosophila* optic lobe development depend on synaptobrevin. *The Journal of neuroscience : the official journal of the Society for Neuroscience.* 1999; 19:7548–7556. [PubMed: 10460261]
- Hirokawa N, Niwa S, Tanaka Y. Molecular motors in neurons: transport mechanisms and roles in brain function, development, and disease. *Neuron.* 2010; 68:610–638. [PubMed: 21092854]
- Hollenbeck PJ. Products of endocytosis and autophagy are retrieved from axons by regulated retrograde organelle transport. *The Journal of cell biology.* 1993; 121:305–315. [PubMed: 7682217]
- Hollenbeck PJ, Bray D. Rapidly transported organelles containing membrane and cytoskeletal components: their relation to axonal growth. *The Journal of cell biology.* 1987; 105:2827–2835. [PubMed: 3693400]
- Holt CE, Schuman EM. The central dogma decentralized: new perspectives on RNA function and local translation in neurons. *Neuron.* 2013; 80:648–657. [PubMed: 24183017]
- Huber LA, Teis D. Lysosomal signaling in control of degradation pathways. *Current opinion in cell biology.* 2016; 39:8–14. [PubMed: 26827287]
- Jarome TJ, Helmstetter FJ. Protein degradation and protein synthesis in long-term memory formation. *Front Mol Neurosci.* 2014; 7:61. [PubMed: 25018696]
- Johansson M, Rocha N, Zwart W, Jordens I, Janssen L, Kuijl C, Olkkonen VM, Neeffjes J. Activation of endosomal dynein motors by stepwise assembly of Rab7-RILP-p150Glued, ORP1L, and the receptor betalll spectrin. *The Journal of cell biology.* 2007; 176:459–471. [PubMed: 17283181]

- Johnson DE, Ostrowski P, Jaumouille V, Grinstein S. The position of lysosomes within the cell determines their luminal pH. *The Journal of cell biology*. 2016; 212:677–692. [PubMed: 26975849]
- Jordens I, Fernandez-Borja M, Marsman M, Dusseljee S, Janssen L, Calafat J, Janssen H, Wubbolts R, Neefjes J. The Rab7 effector protein RILP controls lysosomal transport by inducing the recruitment of dynein-dynactin motors. *Current biology : CB*. 2001; 11:1680–1685. [PubMed: 11696325]
- Kashyap SS, Johnson JR, McCue HV, Chen X, Edmonds MJ, Ayala M, Graham ME, Jenn RC, Barclay JW, Burgoyne RD, Morgan A. Caenorhabditis elegans dnj-14, the orthologue of the DNAJC5 gene mutated in adult onset neuronal ceroid lipofuscinosis, provides a new platform for neuroprotective drug screening and identifies a SIR-2.1-independent action of resveratrol. *Human molecular genetics*. 2014; 23:5916–5927. [PubMed: 24947438]
- Katzmann DJ, Babst M, Emr SD. Ubiquitin-dependent sorting into the multivesicular body pathway requires the function of a conserved endosomal protein sorting complex, ESCRT-I. *Cell*. 2001; 106:145–155. [PubMed: 11511343]
- Kaur J, Debnath J. Autophagy at the crossroads of catabolism and anabolism. *Nature reviews. Molecular cell biology*. 2015; 16:461–472. [PubMed: 26177004]
- Kaushik S, Cuervo AM. Proteostasis and aging. *Nature medicine*. 2015; 21:1406–1415.
- Klionsky DJ, Emr SD. Autophagy as a regulated pathway of cellular degradation. *Science*. 2000; 290:1717–1721. [PubMed: 11099404]
- Komatsu M, Kominami E, Tanaka K. Autophagy and neurodegeneration. *Autophagy*. 2006; 2:315–317. [PubMed: 16874063]
- Kononenko NL, Haucke V. Molecular mechanisms of presynaptic membrane retrieval and synaptic vesicle reformation. *Neuron*. 2015; 85:484–496. [PubMed: 25654254]
- Korkut C, Ataman B, Ramachandran P, Ashley J, Barria R, Gherbesi N, Budnik V. Trans-synaptic transmission of vesicular Wnt signals through Evi/Wntless. *Cell*. 2009; 139:393–404. [PubMed: 19837038]
- Kraft C, Martens S. Mechanisms and regulation of autophagosome formation. *Current opinion in cell biology*. 2012; 24:496–501. [PubMed: 22664348]
- Labbadia J, Morimoto RI. The biology of proteostasis in aging and disease. *Annual review of biochemistry*. 2015; 84:435–464.
- Lai C, Lin X, Chandran J, Shim H, Yang WJ, Cai H. The G59S mutation in p150(glued) causes dysfunction of dynactin in mice. *The Journal of neuroscience : the official journal of the Society for Neuroscience*. 2007; 27:13982–13990. [PubMed: 18094236]
- Laird FM, Farah MH, Ackerley S, Hoke A, Maragakis N, Rothstein JD, Griffin J, Price DL, Martin LJ, Wong PC. Motor neuron disease occurring in a mutant dynactin mouse model is characterized by defects in vesicular trafficking. *The Journal of neuroscience : the official journal of the Society for Neuroscience*. 2008; 28:1997–2005. [PubMed: 18305234]
- Levy JR, Sumner CJ, Caviston JP, Tokito MK, Ranganathan S, Ligon LA, Wallace KE, LaMonte BH, Harmison GG, Puls I, Fischbeck KH, Holzbaue EL. A motor neuron disease-associated mutation in p150Glued perturbs dynactin function and induces protein aggregation. *The Journal of cell biology*. 2006; 172:733–745. [PubMed: 16505168]
- Lloyd TE, Machamer J, O'Hara K, Kim JH, Collins SE, Wong MY, Sahin B, Imlach W, Yang Y, Levitan ES, McCabe BD, Kolodkin AL. The p150(Glued) CAP-Gly domain regulates initiation of retrograde transport at synaptic termini. *Neuron*. 2012; 74:344–360. [PubMed: 22542187]
- Lorincz P, Mauvezin C, Juhasz G. Exploring Autophagy in Drosophila. *Cells*. 2017; 6
- Lotvall J, Valadi H. Cell to cell signalling via exosomes through esRNA. *Cell adhesion & migration*. 2007; 1:156–158. [PubMed: 19262134]
- Luzio JP, Hackmann Y, Dieckmann NM, Griffiths GM. The biogenesis of lysosomes and lysosome-related organelles. *Cold Spring Harbor perspectives in biology*. 2014; 6:a016840. [PubMed: 25183830]
- Luzio JP, Pryor PR, Bright NA. Lysosomes: fusion and function. *Nature reviews. Molecular cell biology*. 2007; 8:622–632. [PubMed: 17637737]

- Maday S, Holzbaur EL. Autophagosome assembly and cargo capture in the distal axon. *Autophagy*. 2012; 8:858–860. [PubMed: 22617438]
- Maday S, Holzbaur EL. Autophagosome biogenesis in primary neurons follows an ordered and spatially regulated pathway. *Dev Cell*. 2014; 30:71–85. [PubMed: 25026034]
- Maday S, Holzbaur EL. Compartment-Specific Regulation of Autophagy in Primary Neurons. *The Journal of neuroscience : the official journal of the Society for Neuroscience*. 2016; 36:5933–5945. [PubMed: 27251616]
- Maday S, Twelvetrees AE, Moughamian AJ, Holzbaur EL. Axonal transport: cargo-specific mechanisms of motility and regulation. *Neuron*. 2014; 84:292–309. [PubMed: 25374356]
- Mancias JD, Kimmelman AC. Mechanisms of Selective Autophagy in Normal Physiology and Cancer. *Journal of molecular biology*. 2016; 428:1659–1680. [PubMed: 26953261]
- Martin S, Henley JM. Activity-dependent endocytic sorting of kainate receptors to recycling or degradation pathways. *The EMBO journal*. 2004; 23:4749–4759. [PubMed: 15549132]
- McCray BA, Skordalakes E, Taylor JP. Disease mutations in Rab7 result in unregulated nucleotide exchange and inappropriate activation. *Human molecular genetics*. 2010; 19:1033–1047. [PubMed: 20028791]
- Menzies FM, Fleming A, Caricasole A, Bento CF, Andrews SP, Ashkenazi A, Fullgrabe J, Jackson A, Jimenez Sanchez M, Karabiyik C, Licitra F, Lopez Ramirez A, Pavel M, Puri C, Renna M, Ricketts T, Schlotawa L, Vicinanza M, Won H, Zhu Y, Skidmore J, Rubinsztein DC. Autophagy and Neurodegeneration: Pathogenic Mechanisms and Therapeutic Opportunities. *Neuron*. 2017; 93:1015–1034. [PubMed: 28279350]
- Miller KE, Heidemann SR. What is slow axonal transport? *Exp Cell Res*. 2008; 314:1981–1990. [PubMed: 18410924]
- Moors TE, Hoozemans JJ, Ingrassia A, Beccari T, Parnetti L, Chartier-Harlin MC, van de Berg WD. Therapeutic potential of autophagy-enhancing agents in Parkinson's disease. *Molecular neurodegeneration*. 2017; 12:11. [PubMed: 28122627]
- Morales I, Sanchez A, Rodriguez-Sabate C, Rodriguez M. The degeneration of dopaminergic synapses in Parkinson's disease: A selective animal model. *Behavioural brain research*. 2015; 289:19–28. [PubMed: 25907749]
- Moughamian AJ, Holzbaur EL. Dynactin is required for transport initiation from the distal axon. *Neuron*. 2012; 74:331–343. [PubMed: 22542186]
- Muller MJ, Klumpp S, Lipowsky R. Tug-of-war as a cooperative mechanism for bidirectional cargo transport by molecular motors. *Proceedings of the National Academy of Sciences of the United States of America*. 2008; 105:4609–4614. [PubMed: 18347340]
- Munch C, Sedlmeier R, Meyer T, Homberg V, Sperfeld AD, Kurt A, Prudlo J, Peraus G, Hanemann CO, Stumm G, Ludolph AC. Point mutations of the p150 subunit of dynactin (DCTN1) gene in ALS. *Neurology*. 2004; 63:724–726. [PubMed: 15326253]
- Nishimura T, Tamura N, Kono N, Shimanaka Y, Arai H, Yamamoto H, Mizushima N. Autophagosome formation is initiated at phosphatidylinositol synthase-enriched ER subdomains. *The EMBO journal*. 2017; 36:1719–1735. [PubMed: 28495679]
- Ohsumi Y. Historical landmarks of autophagy research. *Cell Res*. 2014; 24:9–23. [PubMed: 24366340]
- Okerlund ND, Schneider K, Leal-Ortiz S, Montenegro-Venegas C, Kim SA, Garner LC, Gundelfinger ED, Reimer RJ, Garner CC. Bassoon Controls Presynaptic Autophagy through Atg5. *Neuron*. 2017; 93:897–913. e897. [PubMed: 28231469]
- Overly CC, Hollenbeck PJ. Dynamic organization of endocytic pathways in axons of cultured sympathetic neurons. *The Journal of neuroscience : the official journal of the Society for Neuroscience*. 1996; 16:6056–6064. [PubMed: 8815888]
- Park JW, Vahidi B, Taylor AM, Rhee SW, Jeon NL. Microfluidic culture platform for neuroscience research. *Nature protocols*. 2006; 1:2128–2136. [PubMed: 17487204]
- Parton RG, Simons K, Dotti CG. Axonal and dendritic endocytic pathways in cultured neurons. *The Journal of cell biology*. 1992; 119:123–137. [PubMed: 1527164]
- Perin MS, Fried VA, Stone DK, Xie XS, Sudhof TC. Structure of the 116-kDa polypeptide of the clathrin-coated vesicle/synaptic vesicle proton pump. *J Biol Chem*. 1991; 266:3877–3881. [PubMed: 1704894]

- Pierce JP, Mayer T, McCarthy JB. Evidence for a satellite secretory pathway in neuronal dendritic spines. *Current biology : CB*. 2001; 11:351–355. [PubMed: 11267872]
- Pilling AD, Horiuchi D, Lively CM, Saxton WM. Kinesin-1 and Dynein are the primary motors for fast transport of mitochondria in *Drosophila* motor axons. *Mol Biol Cell*. 2006; 17:2057–2068. [PubMed: 16467387]
- Price JC, Guan S, Burlingame A, Prusiner SB, Ghaemmaghami S. Analysis of proteome dynamics in the mouse brain. *Proceedings of the National Academy of Sciences of the United States of America*. 2010; 107:14508–14513. [PubMed: 20699386]
- Puls I, Jonnakuty C, LaMonte BH, Holzbaur EL, Tokito M, Mann E, Floeter MK, Bidus K, Drayna D, Oh SJ, Brown RH, Ludlow CL Jr, Fischbeck KH. Mutant dynactin in motor neuron disease. *Nature genetics*. 2003; 33:455–456. [PubMed: 12627231]
- Ramirez OA, Couve A. The endoplasmic reticulum and protein trafficking in dendrites and axons. *Trends Cell Biol*. 2011; 21:219–227. [PubMed: 21215635]
- Raposo G, Stoorvogel W. Extracellular vesicles: exosomes, microvesicles, and friends. *The Journal of cell biology*. 2013; 200:373–383. [PubMed: 23420871]
- Ravikumar B, Acevedo-Arozena A, Imarisio S, Berger Z, Vacher C, O’Kane CJ, Brown SD, Rubinsztein DC. Dynein mutations impair autophagic clearance of aggregate-prone proteins. *Nature genetics*. 2005; 37:771–776. [PubMed: 15980862]
- Rizzoli SO. Synaptic vesicle recycling: steps and principles. *The EMBO journal*. 2014; 33:788–822. [PubMed: 24596248]
- Rowland AM, Richmond JE, Olsen JG, Hall DH, Bamber BA. Presynaptic terminals independently regulate synaptic clustering and autophagy of GABAA receptors in *Caenorhabditis elegans*. *The Journal of neuroscience : the official journal of the Society for Neuroscience*. 2006; 26:1711–1720. [PubMed: 16467519]
- Saman S, Kim W, Raya M, Visnick Y, Miro S, Saman S, Jackson B, McKee AC, Alvarez VE, Lee NC, Hall GF. Exosome-associated tau is secreted in tauopathy models and is selectively phosphorylated in cerebrospinal fluid in early Alzheimer disease. *The Journal of biological chemistry*. 2012; 287:3842–3849. [PubMed: 22057275]
- Santos SD, Carvalho AL, Caldeira MV, Duarte CB. Regulation of AMPA receptors and synaptic plasticity. *Neuroscience*. 2009; 158:105–125. [PubMed: 18424006]
- Schink KO, Tan KW, Stenmark H. Phosphoinositides in Control of Membrane Dynamics. *Annual review of cell and developmental biology*. 2016; 32:143–171.
- Schnapp BJ, Reese TS. Dynein is the motor for retrograde axonal transport of organelles. *Proceedings of the National Academy of Sciences of the United States of America*. 1989; 86:1548–1552. [PubMed: 2466291]
- Schoch S, Deak F, Konigstorfer A, Mozhayeva M, Sara Y, Sudhof TC, Kavalali ET. SNARE function analyzed in synaptobrevin/VAMP knockout mice. *Science*. 2001; 294:1117–1122. [PubMed: 11691998]
- Schuh AL, Audhya A. The ESCRT machinery: from the plasma membrane to endosomes and back again. *Critical reviews in biochemistry and molecular biology*. 2014; 49:242–261. [PubMed: 24456136]
- Schulze H, Kolter T, Sandhoff K. Principles of lysosomal membrane degradation: Cellular topology and biochemistry of lysosomal lipid degradation. *Biochimica et biophysica acta*. 2009; 1793:674–683. [PubMed: 19014978]
- Schwarz LA, Hall BJ, Patrick GN. Activity-dependent ubiquitination of GluA1 mediates a distinct AMPA receptor endocytosis and sorting pathway. *The Journal of neuroscience : the official journal of the Society for Neuroscience*. 2010; 30:16718–16729. [PubMed: 21148011]
- Shankar GM, Walsh DM. Alzheimer’s disease: synaptic dysfunction and Abeta. *Molecular neurodegeneration*. 2009; 4:48. [PubMed: 19930651]
- Shao S, Hegde RS. Cell Biology. Local synthesis and disposal. *Science*. 2014; 346:701–702. [PubMed: 25378608]
- Sheehan P, Waites CL. Coordination of synaptic vesicle trafficking and turnover by the Rab35 signaling network. *Small GTPases*. 2017:1–10.

- Sheehan P, Zhu M, Beskow A, Vollmer C, Waites CL. Activity-Dependent Degradation of Synaptic Vesicle Proteins Requires Rab35 and the ESCRT Pathway. *The Journal of neuroscience : the official journal of the Society for Neuroscience*. 2016; 36:8668–8686. [PubMed: 27535913]
- Shehata M, Matsumura H, Okubo-Suzuki R, Ohkawa N, Inokuchi K. Neuronal stimulation induces autophagy in hippocampal neurons that is involved in AMPA receptor degradation after chemical long-term depression. *The Journal of neuroscience : the official journal of the Society for Neuroscience*. 2012; 32:10413–10422. [PubMed: 22836274]
- Simons M, Raposo G. Exosomes--vesicular carriers for intercellular communication. *Current opinion in cell biology*. 2009; 21:575–581. [PubMed: 19442504]
- Solinger JA, Spang A. Tethering complexes in the endocytic pathway: CORVET and HOPS. *FEBS J*. 2013; 280:2743–2757. [PubMed: 23351085]
- Song JW, Misgeld T, Kang H, Knecht S, Lu J, Cao Y, Cotman SL, Bishop DL, Lichtman JW. Lysosomal activity associated with developmental axon pruning. *The Journal of neuroscience : the official journal of the Society for Neuroscience*. 2008; 28:8993–9001. [PubMed: 18768693]
- Song W, Zinsmaier KE. Endophilin and synaptojanin hook up to promote synaptic vesicle endocytosis. *Neuron*. 2003; 40:665–667. [PubMed: 14622570]
- Soto F, Kerschensteiner D. Synaptic remodeling of neuronal circuits in early retinal degeneration. *Frontiers in cellular neuroscience*. 2015; 9:395. [PubMed: 26500497]
- Soukup SF, Kuenen S, Vanhauwaert R, Manetsberger J, Hernandez-Diaz S, Swerts J, Schoovaerts N, Vilain S, Gounko NV, Vints K, Geens A, De Strooper B, Verstreken P. A LRRK2-Dependent EndophilinA Phosphoswitch Is Critical for Macroautophagy at Presynaptic Terminals. *Neuron*. 2016; 92:829–844. [PubMed: 27720484]
- Speese SD, Trotta N, Rodesch CK, Aravamudan B, Broadie K. The ubiquitin proteasome system acutely regulates presynaptic protein turnover and synaptic efficacy. *Current biology : CB*. 2003; 13:899–910. [PubMed: 12781128]
- Spinosa MR, Progida C, De Luca A, Colucci AM, Alifano P, Bucci C. Functional characterization of Rab7 mutant proteins associated with Charcot-Marie-Tooth type 2B disease. *The Journal of neuroscience : the official journal of the Society for Neuroscience*. 2008; 28:1640–1648. [PubMed: 18272684]
- Steward O, Schuman EM. Compartmentalized synthesis and degradation of proteins in neurons. *Neuron*. 2003; 40:347–359. [PubMed: 14556713]
- Strom AL, Gal J, Shi P, Kasarskis EJ, Hayward LJ, Zhu H. Retrograde axonal transport and motor neuron disease. *J Neurochem*. 2008; 106:495–505. [PubMed: 18384644]
- Sudhof TC. The synaptic vesicle cycle. *Annual review of neuroscience*. 2004; 27:509–547.
- Tai HC, Schuman EM. Ubiquitin, the proteasome and protein degradation in neuronal function and dysfunction. *Nature reviews. Neuroscience*. 2008; 9:826–838. [PubMed: 18931696]
- Takats S, Boda A, Csizmadia T, Juhasz G. Small GTPases controlling autophagy-related membrane traffic in yeast and metazoans. *Small GTPases*. 2016:1–7.
- Tang G, Gudsnuk K, Kuo SH, Cotrina ML, Rosoklija G, Sosunov A, Sonders MS, Kanter E, Castagna C, Yamamoto A, Yue Z, Arancio O, Peterson BS, Champagne F, Dwork AJ, Goldman J, Sulzer D. Loss of mTOR-dependent macroautophagy causes autistic-like synaptic pruning deficits. *Neuron*. 2014; 83:1131–1143. [PubMed: 25155956]
- Taylor AM, Blurton-Jones M, Rhee SW, Cribbs DH, Cotman CW, Jeon NL. A microfluidic culture platform for CNS axonal injury, regeneration and transport. *Nature methods*. 2005; 2:599–605. [PubMed: 16094385]
- Taylor AM, Dieterich DC, Ito HT, Kim SA, Schuman EM. Microfluidic local perfusion chambers for the visualization and manipulation of synapses. *Neuron*. 2010; 66:57–68. [PubMed: 20399729]
- Taylor AM, Jeon NL. Micro-scale and microfluidic devices for neurobiology. *Current opinion in neurobiology*. 2010; 20:640–647. [PubMed: 20739175]
- Taylor AM, Rhee SW, Jeon NL. Microfluidic chambers for cell migration and neuroscience research. *Methods in molecular biology*. 2006; 321:167–177. [PubMed: 16508072]
- Tooze SA, Abada A, Elazar Z. Endocytosis and autophagy: exploitation or cooperation? *Cold Spring Harbor perspectives in biology*. 2014; 6:a018358. [PubMed: 24789822]

- Uytterhoeven V, Kuenen S, Kasprowicz J, Miskiewicz K, Verstreken P. Loss of skywalker reveals synaptic endosomes as sorting stations for synaptic vesicle proteins. *Cell*. 2011; 145:117–132. [PubMed: 21458671]
- Vanhauwaert R, Kuenen S, Masius R, Bademosi A, Manetsberger J, Schoovaerts N, Bounti L, Gontcharenko S, Swerts J, Vilain S, Picillo M, Barone P, Munshi ST, de Vrij FM, Kushner SA, Gounko NV, Mandemakers W, Bonifati V, Meunier FA, Soukup SF, Verstreken P. The SAC1 domain in synaptojanin is required for autophagosome maturation at presynaptic terminals. *The EMBO journal*. 2017; 36:1392–1411. [PubMed: 28331029]
- Verhoeven K, De Jonghe P, Coen K, Verpoorten N, Auer-Grumbach M, Kwon JM, FitzPatrick D, Schmedding E, De Vriendt E, Jacobs A, Van Gerwen V, Wagner K, Hartung HP, Timmerman V. Mutations in the small GTP-ase late endosomal protein RAB7 cause Charcot-Marie-Tooth type 2B neuropathy. *Am J Hum Genet*. 2003; 72:722–727. [PubMed: 12545426]
- Vijayan V, Verstreken P. Autophagy in the presynaptic compartment in health and disease. *The Journal of cell biology*. 2017; 216:1895–1906. [PubMed: 28515275]
- Vitelli R, Santillo M, Lattero D, Chiariello M, Bifulco M, Bruni CB, Bucci C. Role of the small GTPase Rab7 in the late endocytic pathway. *The Journal of biological chemistry*. 1997; 272:4391–4397. [PubMed: 9020161]
- Wang D, Chan CC, Cherry S, Hiesinger PR. Membrane trafficking in neuronal maintenance and degeneration. *Cell Mol Life Sci*. 2013; 70:2919–2934. [PubMed: 23132096]
- Wang D, Hiesinger PR. Autophagy, neuron-specific degradation and neurodegeneration. *Autophagy*. 2012; 8:711–713. [PubMed: 22498474]
- Wang DO, Martin KC, Zukin RS. Spatially restricting gene expression by local translation at synapses. *Trends Neurosci*. 2010; 33:173–182. [PubMed: 20303187]
- Wang J, Davis S, Zhu M, Miller EA, Ferro-Novick S. Autophagosome formation: Where the secretory and autophagy pathways meet. *Autophagy*. 2017; 13:973–974. [PubMed: 28287860]
- Widagdo J, Anggono V. Ubiquitin signals the demise of AMPA receptors. *Oncotarget*. 2015; 6:15718–15719. [PubMed: 26119154]
- Widagdo J, Chai YJ, Ridder MC, Chau YQ, Johnson RC, Sah P, Haganir RL, Anggono V. Activity-Dependent Ubiquitination of GluA1 and GluA2 Regulates AMPA Receptor Intracellular Sorting and Degradation. *Cell reports*. 2015
- Williamson WR, Wang D, Haberman AS, Hiesinger PR. A dual function of V0-ATPase a1 provides an endolysosomal degradation mechanism in *Drosophila melanogaster* photoreceptors. *J Cell Biol*. 2010a; 189:885–899. [PubMed: 20513768]
- Williamson WR, Yang T, Terman JR, Hiesinger PR. Guidance receptor degradation is required for neuronal connectivity in the *Drosophila* nervous system. *PLoS Biol*. 2010b; 8:e1000553. [PubMed: 21151882]
- Wojnacki J, Galli T. Membrane traffic during axon development. *Dev Neurobiol*. 2016; 76:1185–1200. [PubMed: 26945675]
- Wong E, Cuervo AM. Autophagy gone awry in neurodegenerative diseases. *Nature neuroscience*. 2010; 13:805–811. [PubMed: 20581817]
- Xie Z, Klionsky DJ. Autophagosome formation: core machinery and adaptations. *Nature cell biology*. 2007; 9:1102–1109. [PubMed: 17909521]
- Xu H, Ren D. Lysosomal physiology. *Annual review of physiology*. 2015; 77:57–80.
- Yi JJ, Ehlers MD. Emerging roles for ubiquitin and protein degradation in neuronal function. *Pharmacological reviews*. 2007; 59:14–39. [PubMed: 17329546]
- Yogev S, Shen K. Cellular and molecular mechanisms of synaptic specificity. *Annual review of cell and developmental biology*. 2014; 30:417–437.
- Yuyama K, Sun H, Mitsutake S, Igarashi Y. Sphingolipid-modulated exosome secretion promotes clearance of amyloid-beta by microglia. *The Journal of biological chemistry*. 2012; 287:10977–10989. [PubMed: 22303002]
- Zaffagnini G, Martens S. Mechanisms of Selective Autophagy. *Journal of molecular biology*. 2016; 428:1714–1724. [PubMed: 26876603]
- Zhang K, Fishel Ben Kenan R, Osakada Y, Xu W, Sinit RS, Chen L, Zhao X, Chen JY, Cui B, Wu C. Defective axonal transport of Rab7 GTPase results in dysregulated trophic signaling. *The Journal*

of neuroscience : the official journal of the Society for Neuroscience. 2013; 33:7451–7462.
[PubMed: 23616551]

Zinsmaier KE, Eberle KK, Buchner E, Walter N, Benzer S. Paralysis and early death in cysteine string protein mutants of *Drosophila*. *Science*. 1994; 263:977–980. [PubMed: 8310297]

Author Manuscript

Author Manuscript

Author Manuscript

Author Manuscript

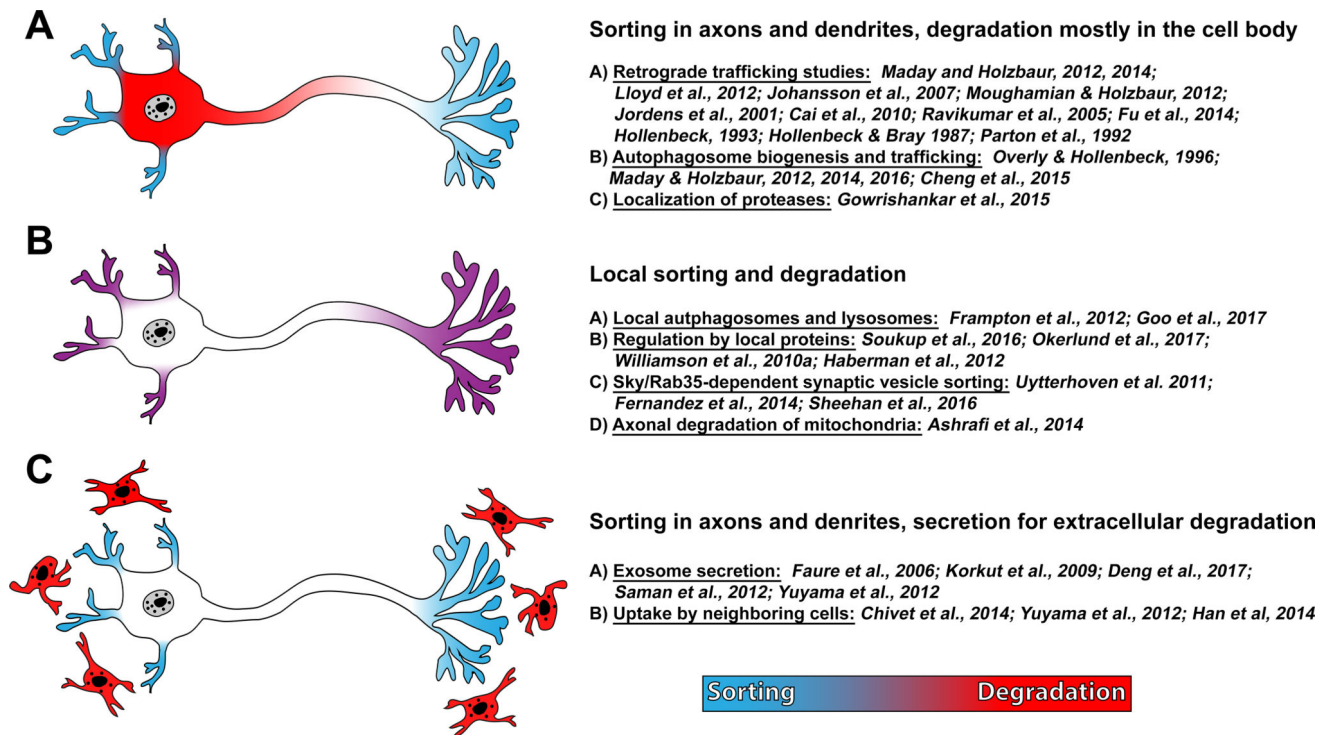
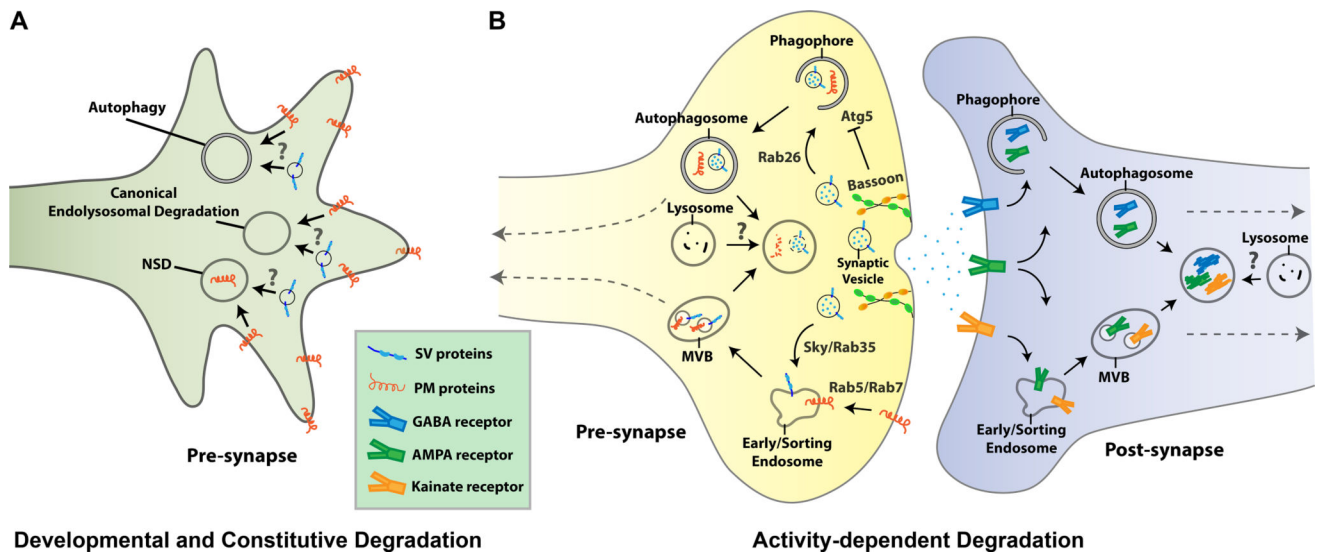


Figure 1. Three models for where neuronal membrane proteins sort and degrade
 (A) Synaptic membrane proteins are sorted for degradation locally, and then undergo retrograde axonal trafficking to the cell body for degradation. (B) Sorting and degradation of synaptic membrane proteins occur locally in axon terminals and dendrites. (C) Neurons release synaptic membrane proteins outside via extracellular vesicles, which are taken by neighboring cells for degradation.



Developmental and Constitutive Degradation

Activity-dependent Degradation

Figure 2. Schematic overviews of cargo-sorting and degradation mechanisms operating in developing and mature neurons

(A) Developmental and constitutive degradation by autophagy, canonical endolysosomal degradation and neuron-specific endolysosomal degradation (Neuronal Sort and Degrade; NSD). Plasma membrane (PM) proteins such as guidance receptors are degraded through NSD (Williamson et al., 2010b). It has not been shown what membrane proteins are degraded through autophagy and canonical endolysosomal degradation in a developing neuron. (B) Mechanisms of activity-dependent cargo-sorting and degradation in pre- and postsynaptic terminals through endolysosomal degradation or autophagy.